

**Board of Commissioners  
Agenda Item Transmittal Form  
Procurement/Contract Transmittal Form**

**RECEIVED**  
NOV 05 2024  
BY: *Purchasing*



**Type of contract:** 1 year  Multi-year  Single Event  **Contract #:**  
BOC Approval Date:

<input type="checkbox"/> <b>Submission Information</b> <b>Contact Name:</b> Brian Kelley <b>Department:</b> Transportation Department  <b>Project Title:</b> Sidewalk Improvement for South Mill and Lionsgate Subdivisions  <b>Funding Account Number:</b> TBD <i>100-4221-522200-41</i> <b>Contract amount:</b> \$7,660.00 <b>Contract Type:</b> Goods ( ) Services (X) Grant ( ) <b>Contract Action:</b> New (X) Renewal ( ) Change Order ( ) <b>Original Contract Number:</b>	<input type="checkbox"/> <b>Vendor Information</b> <b>Vendor Name:</b> Georgia Safe Sidewalks  <b>Address:</b> P O Box 336 <b>Address:</b> Nicholson, GA 30565 <b>Email:</b> <u>Todd@GASafeSidewalks.com</u>  <b>Phone #:</b> 770-722-2534 <b>Contact:</b> Todd Fulk  <b>Term of contract:</b> 6 months
--	---

<p align="center"><b>Chief Financial Officer Signature</b></p> <p>I have reviewed the attached contract, and the amount is approved for processing.</p> <p><i>[Signature]</i> <u>11/24/2024</u></p> <p>Signature: _____ Date: _____</p>	<p align="center"><b>Procurement Manager Signature</b></p> <p>I have reviewed the attached contract, and it is in compliance with Purchasing Policies of Rockdale County.</p> <p><i>[Signature]</i> <u>11/16/24</u></p> <p>Signature: _____ Date: _____</p>
---	---

**Detailed Summary of Contract:**

This agenda item form is for a proposal for sidewalk repair work. The South Mill Subdivision fee is \$5,150.00, and the Lionsgate fee is \$2,510.00. The combined total is \$7,660.00.

**Department Head/Elected Official Signature:**

**Date:**

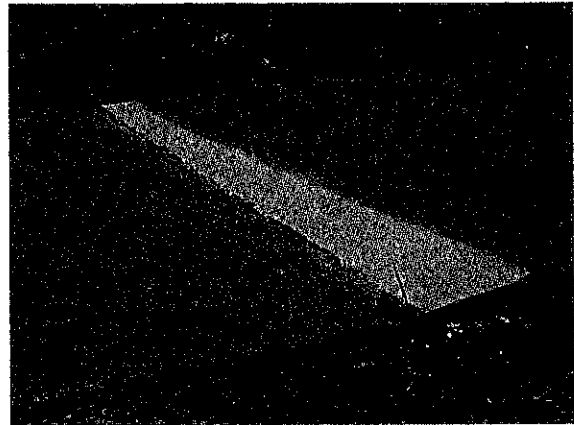
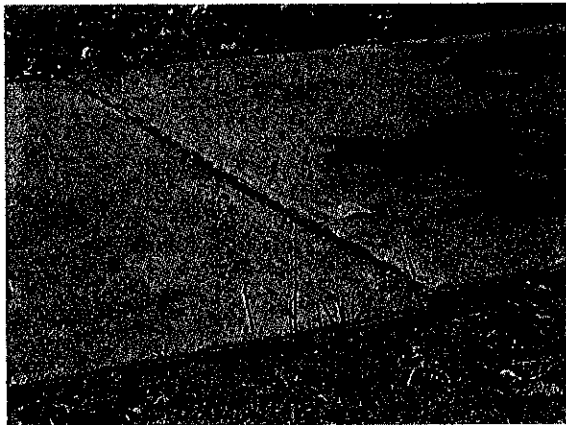
*[Signature]*

11/4/24

*2024-590*



## Sidewalk Inspection Summary And Repair Proposal



Rockdale County  
South Mill  
Revised November 14, 2024





## Inspection Results

Following is a summary of a visual inspection of walkways conducted by Georgia Safe Sidewalks. This summary identifies defects we have identified in your walkways and provides an offer to remove vertical displacements using our horizontal saw-cutting procedure. The vertical displacements we have identified in your walkways represent a safety risk to pedestrians and a liability risk to the property owner. The American's with Disabilities Act places responsibility to maintain safe access to pedestrians and sets very specific guidelines in regards to the repair of uneven walkways.

**General Comments:** There are two main issues with the sidewalks throughout this community. First, the sidewalk needs to be replaced where it has sunk around almost every storm runoff catch basin in the community. Second, very few, if any, of the ADA ramps in the community are compliant with ADA design guidelines.

**ADA Issues:** Our inspection has identified 159 pedestrian safety issues in your walkways that can be considered violations of ADA guidelines.

***This inspection and summary is based upon our personal knowledge of ADA Guidelines. It is intended to be as comprehensive as possible, but in no way guarantees full compliance. Issues may exist of which we are not aware or did not observe. Our specialty is identifying vertical displacements.***

**Vertical Displacements:** 69 (43%) of the ADA violations identified in this risk assessment are vertical displacements that can be removed with our repair process.

**Potential Savings:** Using Georgia Safe Sidewalks to remove the vertical displacements identified in this risk assessment will improve pedestrian safety and compliance with ADA at a savings of approximately \$16,600 versus traditional methods such as demolition and replacement.



## Georgia Safe Sidewalks' Process

Georgia Safe Sidewalks specializes in the identification and removal of vertical displacements, potential trip & fall hazards, from concrete walkways. We utilize a proprietary and patented process to horizontally cut away high concrete that can cause falls from citizens "tripping" on walkways.

### This is What You Can Expect From Georgia Safe Sidewalks

- Each vertical displacement will be removed to a 0" height difference between panels.
- The entire vertical displacement will be removed from one side of the walkway to the other.
- Only the elevated slab is contacted by our equipment, the opposing slab is left pristine.
- The repaired surface will be flat and smooth with no ridges, peaks or valleys.
- The repaired surface will be equal to a 1:12 slope as outlined in ADA repair guidelines.
- A dust containment system is utilized during the repair process to keep dust to the most possible minimum.
- All employees of GASS have been physician certified and wear prescribed safety equipment by OSHA crystalline silica dust laws.
- Our process is a dry cut, there is no slurry or runoff that is required to be contained from storm drains.
- All concrete debris removed from the sidewalk will be removed from the site by GASS staff and recycled.
- The panel under repair will be swept and blown off by GASS staff.
- During project production, the customer is supplied with a daily summary of our progress at the end of each production day.
- Satellite mapping technology is used to provide you with accurate location information for your sidewalk maintenance program documentation.
- Upon project completion, you will be supplied with a detailed summary identifying locations for issues that cannot be remedied with our repair process.





## Policies & Support Materials

**Sole Source versus Bidding:** Georgia Safe Sidewalks is the only company in Georgia authorized and licensed to use the patented equipment and method for removing sidewalk vertical displacements as described by the following United States patent numbers: 6,827,074 – 6,896,604 – 7,000,606 – 7,143,760 – 7,201,644 – 7,402,095 – 9,759,559 – 16,670,737. This makes Georgia Safe Sidewalks a sole source for vertical displacement repair using the equipment and methods described in these patent numbers within the state of Georgia. Documentation can be provided to support your sole-source approval efforts.

You will not be able to find another company that is able to produce the quality and compliance with ADA that Georgia Safe Sidewalks does for vertical displacement remediation. This is a critical aspect of your decision if the appearance of your property and compliance with ADA is important to you.

If you are required to "bid" a project, then this proposal should **not** be considered as our official bid. If you want a project bid, then **you** will need to identify the specific number and location of displacements you want removed. We will then submit a firm bid for your project. To obtain a fair bid though, it falls on you to identify the repairs that you want completed so that all participants are bidding the same work.

If you care about the quality of your repairs, we will consider matching any competitive bid that offers to make the same number of repairs as ours.

**The information provided in this proposal is considered confidential between Georgia Safe Sidewalks and its client, and should not be reproduced or shared with any other organization. In no way does the information included in this inspection transfer ownership of sidewalks or responsibility for your sidewalk maintenance responsibilities to Georgia Safe Sidewalks.**

**Safety & Insurance:** Georgia Safe Sidewalks is a corporation registered in the state of Georgia. We maintain the highest safety standards using OSHA approved safety equipment for employees and conduct regular safety and health screenings. Copies of our W9, liability insurance, auto and workers compensation insurance are available upon request. We have worked in dense urban environments, residential neighborhoods, historic districts, and retail/business environments with no disruption to daily activities.

**Warranty on Service:** No warranty in the form of duration after repair is offered. It is impossible to warranty work against the acts of nature that create vertical displacements in walkways such as growth of tree roots, shifting ground, etc. Our guarantee for our repair is as follows:

- All displacements will be removed to a 0" height difference.
- The entire displacement will be removed.
- The repaired surface will be of a 1:12 slope.
- Adjacent sidewalk slabs will not be affected by the repair.
- Sidewalk debris created by our process will be removed from the work site and recycled.
- There will be no damage to surrounding landscaping, utilities or personal property.





### ADA Guidelines for Trip Hazards:

Georgia Safe Sidewalks strives to meet compliance with ADA guidelines on each and every trip hazard repair that we make. Those guidelines are as follows:

#### 303 Changes in Level

303.1 General. Where changes in level are permitted in floor or ground surfaces, they shall comply with 303.

303.2 Vertical. Changes in level of  $\frac{1}{4}$  inch (6.4 mm) high maximum shall be permitted to be vertical. Vertical Change in Level

#### TECHNICAL CHAPTER 3: BUILDING BLOCKS

303.3 Beveled. Changes in level between  $\frac{1}{4}$  inch (6.4 mm) high minimum and  $\frac{1}{2}$  inch (13 mm) high maximum shall be beveled with a slope not steeper than 1:2.

303.4 Ramps. Changes in level greater than  $\frac{1}{2}$  inch (13 mm) high shall be ramped, and shall comply with 405 or 406.

Advisory 303.3 Beveled. Changes in level exceeding  $\frac{1}{2}$  inch (13 mm) must comply with 405 (Ramps) or 406 (Curb Ramps).

#### 405 Ramps

405.1 General. Ramps on accessible routes shall comply with 405.

405.2 Slope. Ramp runs shall have a running slope not steeper than 1:12.

Information taken directly from Chapter 3: Building Blocks, pages 141-142 of ADAAG.

### Examples of ADA Violations according to these Guidelines

Large (1-3/4" high)



Medium (7/8" high)



Small (1/2" high)





## 2024 Pricing Policy

### Inch-Foot Definition:

Pricing is based upon the size of each trip hazard and the amount of concrete removed. Each trip hazard is measured for height and length. We use a unit of measure we refer to as "inch-foot".

An inch-foot equals the average height of the vertical displacement measured in inches, then multiplied against the length of the cut measured in feet. The example below represents a typical trip hazard.

$$\frac{\text{Height on high side (1/2") + Height on low side (1/4")}{2} \times \text{Length of cut (4')} = 1.5 \text{ inch-feet}$$

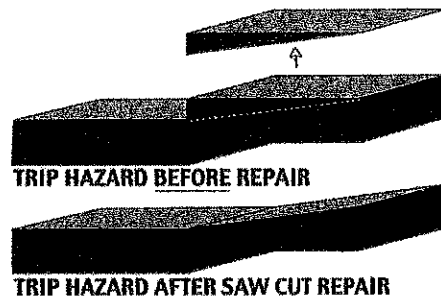
Incorporating the height of the trip hazard into our pricing is what distinguishes Georgia Safe Sidewalks from our competitors. ADA identifies trip hazards by height, not linear feet.

### Pricing & Volume Discounts:

- ✦ Our pricing is based upon project size. Price discounts vary depending upon the size of your project.

### Minimum Job Charge:

Georgia Safe Sidewalks does charge a minimum to mobilize a crew and equipment. We have a two-tiered minimum. Our minimum for a project within a 60-mile radius of Lawrenceville, GA is \$1,000. Our minimum for a project outside this 60-mile radius of Lawrenceville, GA is \$2,000.



### Sole Source:

Georgia Safe Sidewalks is the only company in Georgia authorized and licensed to use the patented equipment and method for removing sidewalk trip hazards as described by the following United States patent numbers: 6,827,074 – 6,896,604 – 7,000,606 – 7,143,760 – 7,201,644 – 7,402,095 – 9,759,559 – 16,670,737. This makes Georgia Safe Sidewalks a sole source for trip hazard removal using the equipment and methods described in these patent numbers within the state of Georgia.

**Payment Terms:** All invoices are due **15-days** from issuance date of the invoice. Jobs that require multiple weeks for completion will be invoiced weekly, at the end of each weeks' work.

**Inspection Fees:** This proposal may have been created after an inspection was completed and paid for by the customer. In the event the customer has paid a fee for their original inspection, they have 6-months to approve the full project offer in order to receive a rebate on the original inspection.

### Additional Charges:

- Credit card payments are acceptable with an additional fee equal to 3% added to each invoice.
- Any requirements placed upon Georgia Safe Sidewalks as a vendor that requires additional costs to our daily operations or modifications to our offered payment terms and policies will be subject to additional charges.
- If the customer requires custom insurance certificates with a vendor registration fee, a \$200 fee will be added to cover the acquisition of certificates. If the customer requires additional levels of insurance, the added cost to secure those levels will be invoiced to the customer.
- If required to "register" with a vendor management company, a fee of \$200 will be added to the invoice to cover the registration fee requirement.

P.O. Box 336, Nicholson, GA 30565 : Telephone: 770-722-2534 : todd@gasafesidewalks.com : www.gasafesidewalks.com

The information in this proposal is considered confidential and should not be reproduced and/or shared outside of the client/customer relationship. In no way does the information included in this inspection transfer ownership of sidewalks or responsibility for their maintenance to Georgia Safe Sidewalks.



## Offer Summary

The maps and tables on the following pages provide a general location for the vertical displacements that we identified and summarize their severity. Due to limited accuracy with GPS technology this information should only be used for general locations.

### Full Project Offer

This option will remove all of the vertical displacements we identified in our survey with the intention of leaving your property as free of vertical displacements as possible. This is the option that must be selected in order to receive the rebate for any pre-paid inspection fee. This option has already been discounted by 2%.

**Price: \$5,150**

**Days to Complete: ~ 1 day**

### Partial Project A Offer (Medium & Large)

This option provides a little less expensive option that will remove all of the vertical displacements we identified above 5/8" high. It will remove the most obvious displacements from the property but will not leave the property free of vertical displacements. Smaller displacements will remain in the walkways.

**Price: \$1,290**

**Days to Complete: ~ 1 day**

### Specific Budget Project

Sometimes customers are not able to remove all of the vertical displacements identified in our inspections due to budget restrictions. In this option Georgia Safe Sidewalks is more than happy to complete a project of a smaller value to a budget identified by the customer. In this option the customer usually specifies the budget amount they can afford, and an area to begin by providing us a list of priorities. This option allows the customer to spread their investment out over a period of months or even years.

**Our minimum is \$1,000**

**Projects above \$5,000 are discounted by 2%**

**Projects above \$10,000 are discounted by 4%**

**Projects above \$25,000 are discounted by 6%**

**Projects above \$50,000 are discounted by 8%**

**Projects above \$100,000 are discounted by 10%**





Because we recognize that projects of this type may require time for budgeting, the prices in this proposal are valid for a period of 6 months. Operating costs increase with time, and sidewalk conditions change over time.

- ✦ After 6-months, the prices provided in this quotation will be increased by 5%.
- ✦ If unable to make a decision within 12 months, no problem, the proposal will still be valid, but the prices shown will be increased by 10%.
- ✦ If still unable to make a decision after 2 years, we still want your business. We will honor this proposal for as long as 24-months but the pricing shown at that point will be increased by an additional 10%.

In the event that we are asked to return to a property/community to re-inspect it, the 2<sup>nd</sup> inspection will be conducted at a cost of \$300 per pedestrian mile.

### **Schedule**

We do fill our schedule on a first-come, first-serve basis which means the start date can change as we accept commitments from customers. We can normally remove approximately 90 trip hazards or 120 inch-feet in a single day depending upon their size and location.

**First Available Start Date: February 13<sup>th</sup>**

Our business has grown in popularity enough that we carry a steady 3-month backlog throughout the year. Uncertain business conditions and the fact that our employees are trained, skilled tradesman makes it difficult to add employees when our backlog increases. As a business, we cannot use part time labor. Our employees are skilled at what they do.

Don't exclude us from approval because we have a large backlog. Schedules change, and we sometimes have the ability to split our production team to complete smaller projects sooner than what is identified in this proposal. Tell us your needs and we might be able to work something out sooner.



## Terminology

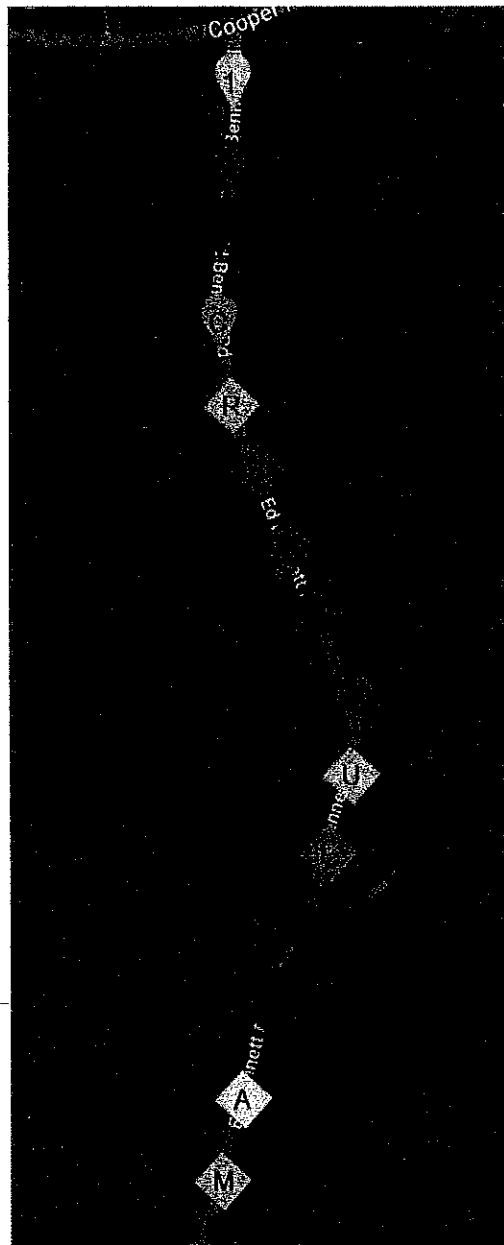
The inspection that this proposal is based upon was visual in nature. During the inspection we identify vertical height changes that we believe to be greater than ¼" and less than 2" in height. To conserve time during a survey, height is estimated only. The actual number of vertical displacements identified may vary once measurements are taken when the project is performed.

Repairs we can make that are included in this repair offer:

- A yellow balloon identifies a small vertical displacement estimated to be between ¼" and ½" high.
- An orange balloon identifies a medium size vertical displacement estimated to be between 5/8" and 1" high.
- A red balloon identifies a large vertical displacement estimated to be between 1-1/8" and 2" high.
- A pink balloon identifies a curb cut that we can make.

Repairs beyond our services, issues that require another source and is not included in this repair offer:

- A yellow diamond identifies a general condition that requires replacement of the existing sidewalk.
- A blue diamond identifies a walkway that is cracked and broken and is beyond repair. The sidewalk
- A light green diamond identifies a vertical displacement too big for a repair. The displacement is over 2" high and requires new concrete instead of a repair.
- A purple diamond identifies missing sidewalk. This requires new concrete to fill in the missing area.
- A dark green diamond identifies a landscaping issue. It can be buried sidewalk, or overgrown sidewalk. It is not work that we do.
- A light blue diamond identifies a utility issue. This can be any type of object blocking the sidewalk or uneven with the walking surface.
- An orange diamond identifies a wide gap in the walkway that needs filled.
- A red diamond identifies uneven pavers that need to be reset or has other issues.
- A dark blue diamond identifies an issue with a catch basin. It usually means the sidewalk must be replaced around the storm runoff catch basin.
- A pale-yellow diamond identifies an issue/problem with an ADA ramp.
- A gray diamond is a miscellaneous sidewalk problem or comment.







## Repair Options

### Full Project Offer

This option will remove all of the vertical displacements we identified in our survey with the intention of leaving your property as free of vertical displacements as possible. This is the option that must be selected in order to receive the rebate for any pre-paid inspection fee.

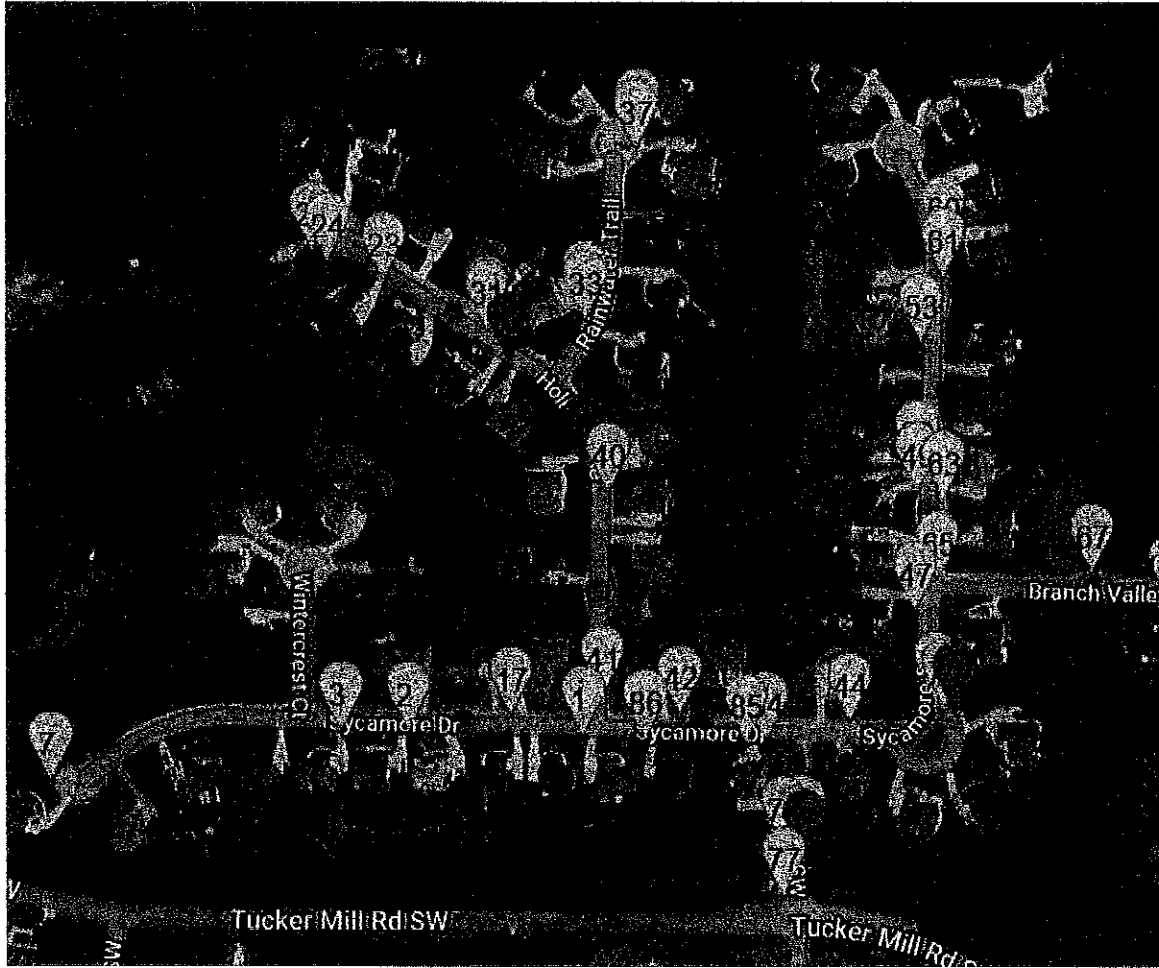
**Price: \$5,150**

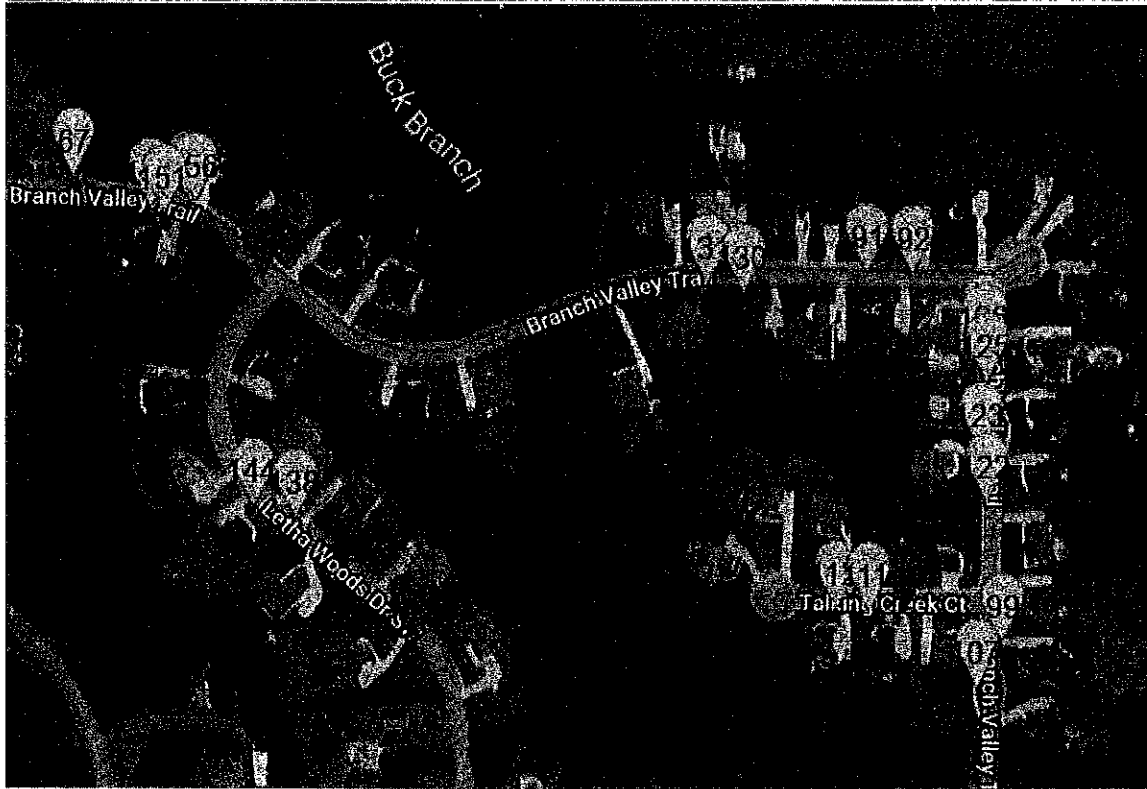
**Days to Complete: ~ 1 day**

	Small Hazards 1/4" to 1/2"	Medium Hazards 5/8" to 1"	Large Hazards 1-1/8" to 2"		
# of Hazards	59	10	0		
				Total # of Hazards	69
				Curbing (ft)	0 ft

The map below shows all trip & fall hazards identified in our survey that can be removed with our repair process.







P.O. Box 336, Nicholson, GA 30565 : Telephone: 770-722-2534 : todd@gasafesidewalks.com : www.gasafesidewalks.com

The information in this proposal is considered confidential and should not be reproduced and/or shared outside of the client/customer relationship. In no way does the information included in this inspection transfer ownership of sidewalks or responsibility for their maintenance to Georgia Safe Sidewalks.





### Partial Project A Offer (Medium & Large)

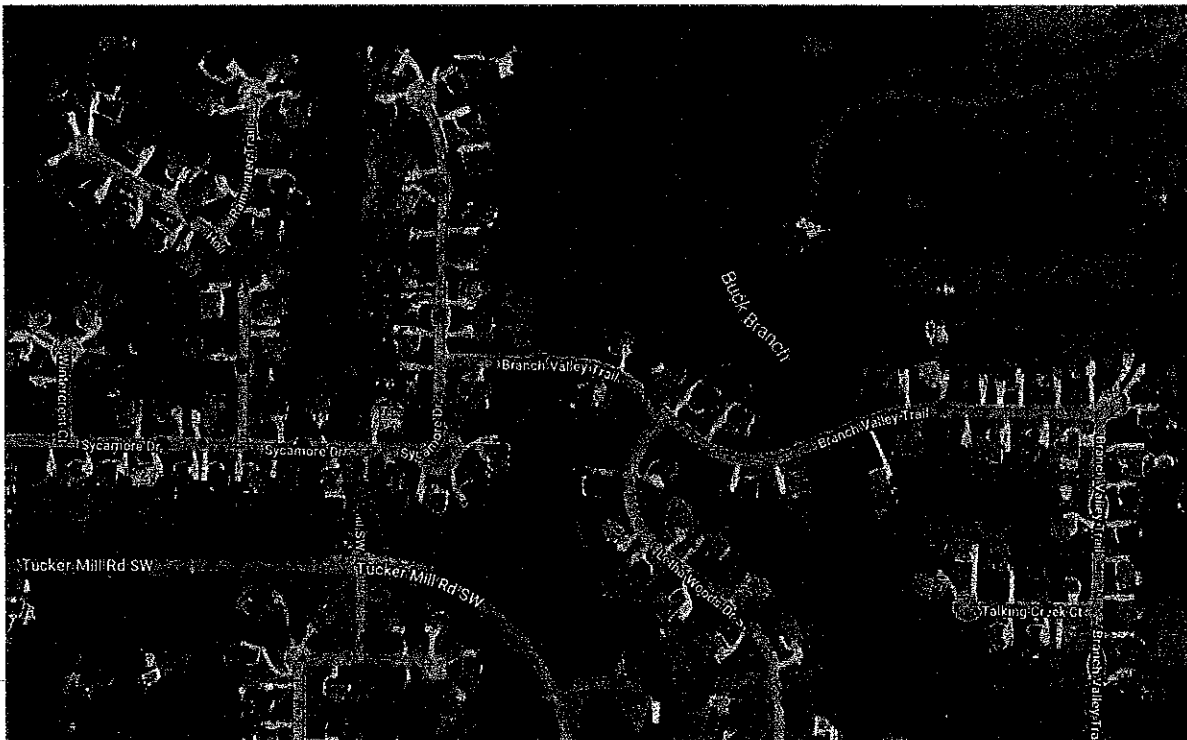
This option provides a little less expensive option that will remove all of the vertical displacements we identified above 5/8" high. It will remove the most obvious displacements from the property but will not leave the property free of vertical displacements. Smaller displacements will remain in the walkways. Smaller hazards will remain in the walkways.

**Price: \$1,290**

**Days to Complete: ~ 1 day**

	Medium Hazards 5/8" to 1"	Large Hazards 1-1/8" to 2"		
# of Hazards	10	0		
			<b>Total # of Hazards</b>	<b>10</b>

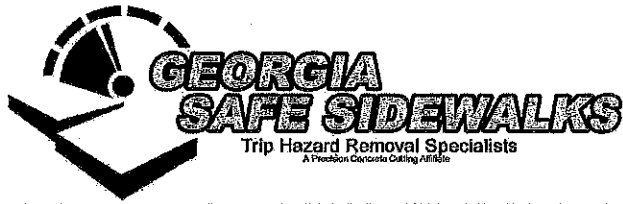
The maps below show the location of the medium sized vertical displacements identified in our survey followed by the smaller displacements identified in our survey. The maps of the smaller displacements show what will be left behind if a full project is not approved.







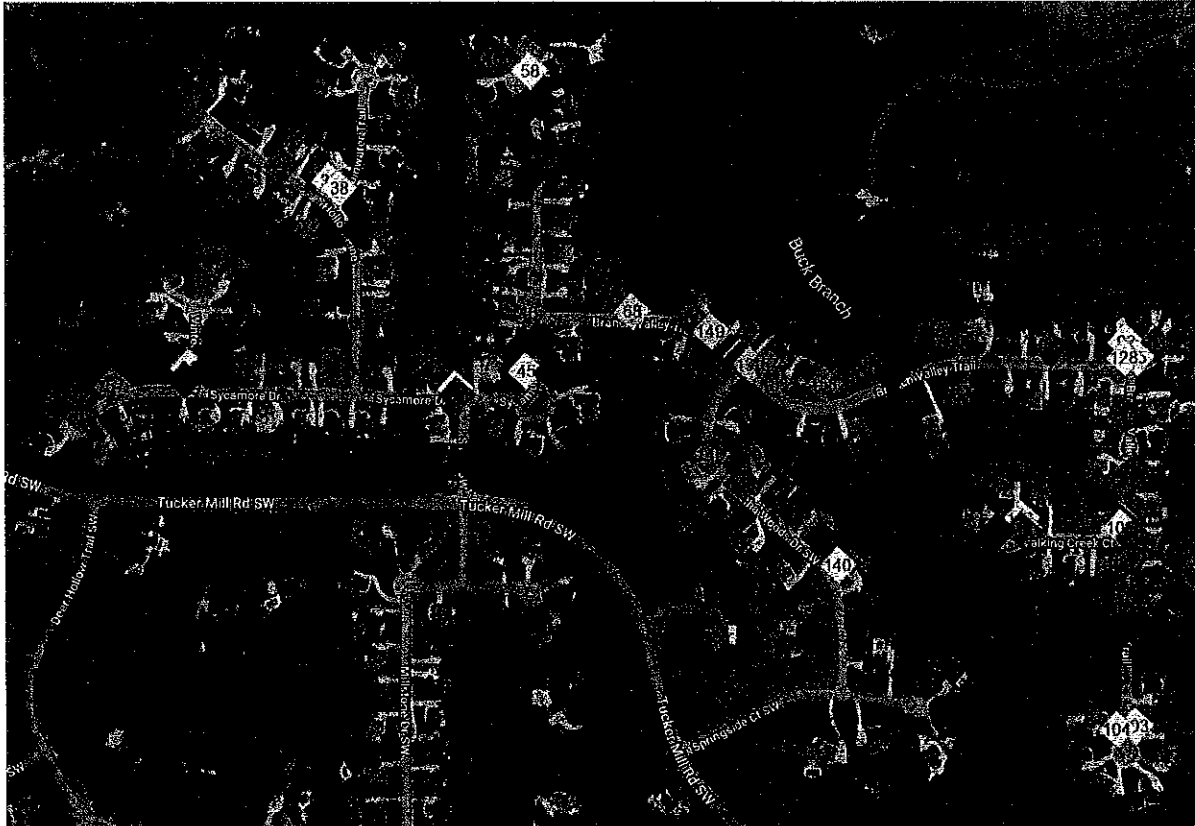






## Non-Cut Issues – Repair not Possible by Georgia Safe Sidewalks

The maps below show areas identified in our survey where our repair process will not correct the issue. These areas need to be dealt with either by a concrete company, general contractor, or your in-house staff.











## Summary Table

The following table summarizes our survey and corresponds to the previous maps.

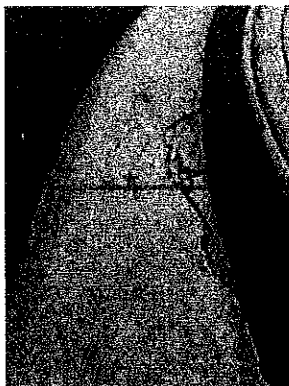
#	Description/Size	#	Description/Size	#	Description/Size
1	Small	54	Small	107	Small
2	Small	55	Small	108	Small
3	Small	56	Small	109	Improve ADA ramp
4	Small	57	Small	110	Medium
5	Small	58	Improve ADA ramp	111	Small
6	Small	59	Small	112	Small
7	Sm - basin cut	60	Small	113	Improve ADA ramp
8	Small	61	Small	114	Small
9	Small	62	Small	115	Small
10	Small	63	Small	116	Improve ADA ramp
11	Improve ADA ramp	64	Small	117	Small
12	Small	65	Small	118	Small
13	Small	66	Small	119	Small
14	Small	67	Small	120	Improve ADA ramp
15	Small	68	Uneven utility	121	Small
16	Small	69	Small	122	Sm - scrape spill
17	Small	70	Small	123	Sm - scrape spill
18	Small	71	Small	124	Small
19	Md - basin cut	72	Medium	125	Sm - scrape spill
20	Md - driveway cut	73	Small	126	Small
21	Medium	74	Small	127	Small
22	Small	75	Medium	128	Improve ADA ramp
23	Small	76	Small	129	Small
24	Small	77	Sm - basin cut	130	Small
25	Small	78	Small	131	Small
26	Small	79	Medium	132	Small
27	Small	80	Medium	133	Fill hole
28	Improve ADA ramp	81	Small	134	Replace vandalized
29	Small	82	Improve ADA ramp	135	Small
30	Small	83	Small	136	Improve ADA ramp
31	Small	84	Small	137	Small
32	Improve ADA ramp	85	Small	138	Small
33	Small	86	Small	139	Small



34	Small	87		140	Improve ADA ramp
35	Sm - basin cut	88		141	Md - basin cut
36	Sm - basin cut	89		142	Small
37	Sm - driveway cut	90		143	
38	Improve ADA ramp	91	Small	144	Small
39	Repair around basin	92	Small	145	Fill chipped joint
40	Small	93	Improve ADA ramp	146	
41	Small	94		147	
42	Small	95	Improve ADA ramp	148	Medium
43		96		149	Uneven utility
44	Small	97		150	
45	Improve ADA ramp	98		151	Sm - basin cut
46	Repair around basin	99	Sm - basin cut	152	Small
47	Small	100		153	Repair around basin
48	Fill chipped joint	101		154	Sm - scrape spill
49	Small	102		155	Small
50	Sm - basin cut	103	Improve ADA ramp	156	Small
51	Sm - basin cut	104	Improve ADA ramp	157	Fill chipped joint
52	Repair around basin	105	Repair around basin	158	Fill chipped joint
53	Small	106		159	



The photo to the left shows sidewalk that should be replaced around a storm runoff catch basin. If the displacement is over 1" high, or the position of the manhole does not allow us to cut an ADA compliance slope, then we cannot cut the basin cover. Or if the sidewalk is broken around the basin. Because we do not provide concrete construction services, this is not an issue we can resolve. This is not included in this repair offer. This is a very common problem throughout this community.



The photo to the left shows an example of sidewalk that is broken and should be replaced with new concrete. Because we do not provide concrete construction services, this is not an issue we can resolve. This is not included in this repair offer.



This next photo shows a landscaping violation. The shrubs should be cut back to open the sidewalk to pedestrians. We do not provide this type of work because it is normally the responsibility of the property owner. This is not included in this repair offer.



The photo to the left shows an example of a "basin cut" that is included in this repair offer. Because the displacement is smaller than 1", we will cut the basin cover to create a flush joint between it and the adjacent sidewalk.



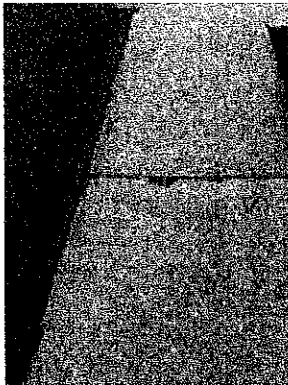
The photo to the left shows an example of a "driveway cut" that is included in this repair offer. We will cut the driveway apron where it is higher than the adjacent sidewalk to create a flush joint between the two surfaces. We will not make this type of repair if the property owner has made an investment into a decorative driveway surface.



This next photo shows a landscaping issue. The sidewalk is buried and should be dug out to provide access to pedestrians. We do not provide this type of work because it is normally the responsibility of the property owner. This is not included in this repair offer.



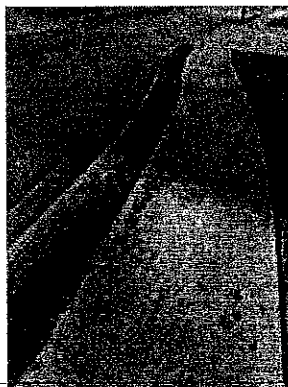
The photo to the left shows an example of an ADA ramp that is out of compliance with federal guidelines. The slope is too steep, there is a large displacement at its base, and the landing zone is not wide enough. Consideration should be given to improving/replacing these ADA ramps. Because we do not provide concrete construction services, this is not an issue we can resolve. This is not included in this repair offer.



This next photo shows concrete chipped out of a joint between sidewalk panels that should be filled. We do not provide this type of work because most of our customers can do it less expensively with their own staff and materials purchased locally. This is not included in this repair offer.



This next photo shows an uneven utility that is too high in the sidewalk. Utilities should be flush with the walking surface. Because we are neither a utility nor general contractor, this is not an issue we can resolve. This is not included in this repair offer.



The photo to the left shows concrete that was left spilled on the sidewalk. We will scrape away this concrete as part of this repair offer.





## Competitive Analysis

### Versus Demolition & Replacement

Our biggest advantages over removal & replacement is cost and time.

Georgia Safe Sidewalks has 16 years of history removing vertical displacements for organizations throughout Georgia. Our average cost throughout our history to remove a vertical displacement is \$65 per repair. We usually perform a repair to a single sidewalk slab that is most commonly 5' wide x 5' long or 25 square feet of concrete. This places our average repair cost at \$2.60 per square foot.

Research and customer feedback shows that sidewalk removal and replacement costs run between \$20 and \$25 per square foot. Costs associated with removal and replacement include:

- ✦ Labor to demolish the old sidewalk, dispose of waste concrete, prepare site for new sidewalk, pour and finish the new concrete, and clean up the site including possible damage to surrounding utilities and landscaping.
- ✦ Large equipment usage such as trucks, tractors, trailers, compressors, etc.
- ✦ Disposal costs for waste concrete at landfills.
- ✦ Investments into a multitude of small tools used for demolition, site preparation, and concrete finishing.

This proposal represents an opportunity to improve pedestrian safety, compliance with ADA in regards to vertical displacements, and to reduce liability associated with trip and fall injuries.

**Estimated Concrete "not" Removed: 1,100 square feet**

**Estimated Savings: \$16,600**

### Additional Benefits over Demolition & Replacement

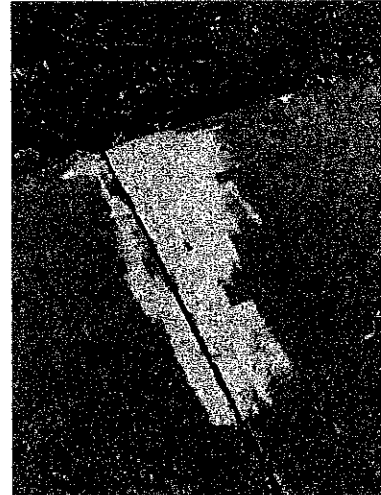
- ✦ Small crew means less disruption to the community during production.
- ✦ Small equipment means no risk of damage to property landscaping, irrigation systems, utilities, and personal property.
- ✦ No threat of vandalism to wet concrete.
- ✦ Faster production means less disruption to the community.
- ✦ Less concrete waste is produced meaning a smaller contribution to landfills, concrete waste is recycled.
- ✦ Small equipment means less greenhouse gas emissions into the environment.



## Versus Grinding & Scarifying

These photos are of typical grinds on sidewalks in Georgia.

The photos at right show the uneven, unprofessional appearance of sidewalk repair by a grinder or scarifier. It shows how the lower slab that didn't need repaired has been scarred and how the trip hazard at the edge of the sidewalk was not removed. They show how the grinder just knocked off the corner of the slab and left a trip hazard at least 1" high. In both instances any money spent on either repair, regardless of how little, was wasted because the repairs are not ADA compliant.



### Additional Benefits over Grinding

- ✦ Faster production. Our customers report that GASS removes as many trip hazards in a single day as a grinding company does in a week.
- ✦ GASS removes the entire trip hazard each and every time.
- ✦ GASS guarantees an ADA compliant repair.
- ✦ GASS is priced equal to or lower than grinding. Most grinding companies charge \$15-\$20 per linear foot. On 5' sidewalks repairing 25 square foot slabs this equates to a cost equal to \$3-\$4 per square foot.



### OSHA Certification

You need to be careful if you are doing your own grinding and asking employees to do this type of work. First, to grind a sidewalk you must utilize equipment that will minimize dust. The equipment being used must include dust abatement.

Second, your employee or contractor performing this work must be wearing the recommended safety gear to work in a dusty environment. Third, any employee of yours, or your vendor must be certified by a physician for permission to work while wearing this safety equipment. If you send an employee to rent a grinder to repair sidewalks without this certification, you are in violation of OSHA regulations and can be fined or held liable in future years for any health issues to that employee.

All employees at Georgia Safe Sidewalks have been physician certified and meet OSHA requirements.

***"Nobody that truly cares about the appearance of their property will allow anybody to tear up their sidewalks with a grinder."***



**VERTICAL DISPLACEMENT REMOVAL AGREEMENT/AUTHORIZATION TO PROCEED**

**PART 1. GENERAL**

**Date:** This Agreement made this 15th day of November, 2024

**1.1 Contractor**

Georgia Safe Sidewalks  
PO Box 336  
Nicholson, GA 30565  
Office: 770-722-2534  
Email: [Todd@GASafeSidewalks.com](mailto:Todd@GASafeSidewalks.com)  
Contractor's Representative: Todd Fulk

**1.2 Client** (herein called "Client") Rockdale County

Project Address Location:  
\_\_\_\_\_  
\_\_\_\_\_

On Site Contact Phone: \_\_\_\_\_

On Site Contact Email: \_\_\_\_\_

**1.3 Project.** Removal of sidewalk vertical displacements at various locations within the area as defined by the Georgia Safe Sidewalks Proposal dated 11/14/2024. Method shall involve horizontal saw-cutting of vertical displacements from area defined in proposal.

**PART 2. SCOPE OF WORK**

**2.1 Generally.**

A. Georgia Safe Sidewalks shall furnish all labor, materials, equipment, insurance, permits, fees, and all other charges, expenses or assessments of whatever kind or character to complete the Project, consisting of horizontal saw-cutting, removing and disposing of concrete sidewalk vertical displacements designated in the Proposal as set forth in the Georgia Safe Sidewalk Proposal dated 11/14/2024. All concrete shall be disposed of as required by law.

**PART 3. PAYMENT/AUTHORIZATION**

**3.1 CONTRACT PRICE**



A. The Contract Price includes the cost of the Work specified in the Proposal, plus the cost of all insurance, permits, fees, and all charges, expenses or assessment of whatever kind of character.

B. The Client shall pay the Contractor the amount not to exceed \$ 5150.00 total for all concrete cut, removed and disposed of set forth on the Proposal. Total amount is due within 15 days of each invoice submittal by Vendor.

C. Other terms: N/A

### 3.2 LEGAL

A. **Authorization.** By signing below, I attest that I am the legal representative for the property in question and have read and understand completely the contents of this agreement. By my signature and authorization, Georgia Safe Sidewalks is approved to schedule the work and complete it according to the agreed upon schedule.

B. Acceptance of this contract/proposal in no way transfers ownership of clients sidewalks or responsibility for maintenance to Georgia Safe Sidewalks.

#### MUTUAL RELEASE/INDEMNIFICATION

*Each party hereby agrees to indemnify and hold harmless the other party from any form of action, lawsuit or claim brought by or on behalf of the indemnifying party's employees, agents or invitees and related in any way to Product/Equipment/Services supplied by Georgia Safe Sidewalks under this Agreement. Each party expressly agrees that the obligation of indemnity under this Paragraph extends to an action, lawsuit or claim alleging negligence of the indemnitee.*

IN WITNESS WHEREOF, the parties have entered into this agreement on the day and year set out at the top of this agreement.

Client: Rockdale County, GA

By: [Signature]  
Signature & Title  
Osborn Nesbitt, Sr., Chairman  
Printed Name

Date: \_\_\_\_\_

**ATTEST:**

\_\_\_\_\_  
Jennifer O. Rutledge, County Clerk

Approved as to form

Georgia Safe Sidewalks

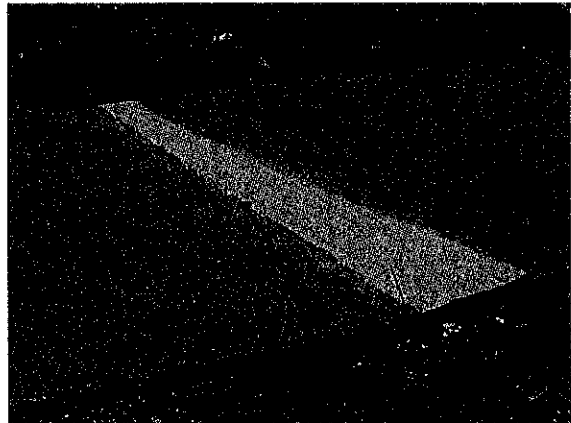
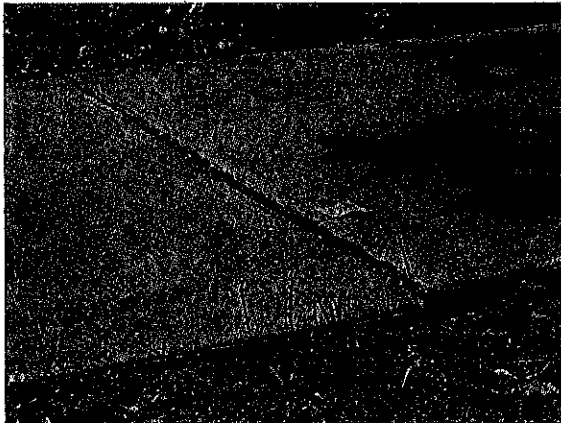
By: [Signature]  
Signature & Title  
Regina L. Fulk, Vice President  
Printed Name

Date: 11/15/2024

\_\_\_\_\_  
M. Qader A. Baig, County Attorney



## Sidewalk Inspection Summary And Repair Proposal



Rockdale County  
Lionsgate  
Revised November 14, 2024





## Inspection Results

Following is a summary of a visual inspection of walkways conducted by Georgia Safe Sidewalks. This summary identifies defects we have identified in your walkways and provides an offer to remove vertical displacements using our horizontal saw-cutting procedure. The vertical displacements we have identified in your walkways represent a safety risk to pedestrians and a liability risk to the property owner. The American's with Disabilities Act places responsibility to maintain safe access to pedestrians and sets very specific guidelines in regards to the repair of uneven walkways.

**ADA Issues:** Our inspection has identified 60 pedestrian safety issues in your walkways that can be considered violations of ADA guidelines.

***This inspection and summary is based upon our personal knowledge of ADA Guidelines. It is intended to be as comprehensive as possible, but in no way guarantees full compliance. Issues may exist of which we are not aware or did not observe. Our specialty is identifying vertical displacements.***

**Vertical Displacements:** 34 of the ADA violations identified in this risk assessment are vertical displacements that can be removed with our repair process.

**Potential Savings:** Using Georgia Safe Sidewalks to remove the vertical displacements identified in this risk assessment will improve pedestrian safety and compliance with ADA at a savings of approximately \$11,100 versus traditional methods such as demolition and replacement.





## Georgia Safe Sidewalks' Process

Georgia Safe Sidewalks specializes in the identification and removal of vertical displacements, potential trip & fall hazards, from concrete walkways. We utilize a proprietary and patented process to horizontally cut away high concrete that can cause falls from citizens "tripping" on walkways.

### This is What You Can Expect From Georgia Safe Sidewalks

- Each vertical displacement will be removed to a 0" height difference between panels.
- The entire vertical displacement will be removed from one side of the walkway to the other.
- Only the elevated slab is contacted by our equipment, the opposing slab is left pristine.
- The repaired surface will be flat and smooth with no ridges, peaks or valleys.
- The repaired surface will be equal to a 1:12 slope as outlined in ADA repair guidelines.
- A dust containment system is utilized during the repair process to keep dust to the most possible minimum.
- All employees of GASS have been physician certified and wear prescribed safety equipment by OSHA crystalline silica dust laws.
- Our process is a dry cut, there is no slurry or runoff that is required to be contained from storm drains.
- All concrete debris removed from the sidewalk will be removed from the site by GASS staff and recycled.
- The panel under repair will be swept and blown off by GASS staff.
- During project production, the customer is supplied with a daily summary of our progress at the end of each production day.
- Satellite mapping technology is used to provide you with accurate location information for your sidewalk maintenance program documentation.
- Upon project completion, you will be supplied with a detailed summary identifying locations for issues that cannot be remedied with our repair process.





## Policies & Support Materials

**Sole Source versus Bidding:** Georgia Safe Sidewalks is the only company in Georgia authorized and licensed to use the patented equipment and method for removing sidewalk vertical displacements as described by the following United States patent numbers: 6,827,074 – 6,896,604 – 7,000,606 – 7,143,760 – 7,201,644 – 7,402,095 – 9,759,559 – 16,670,737. This makes Georgia Safe Sidewalks a sole source for vertical displacement repair using the equipment and methods described in these patent numbers within the state of Georgia. Documentation can be provided to support your sole-source approval efforts.

You will not be able to find another company that is able to produce the quality and compliance with ADA that Georgia Safe Sidewalks does for vertical displacement remediation. This is a critical aspect of your decision if the appearance of your property and compliance with ADA is important to you.

If you are required to “bid” a project, then this proposal should **not** be considered as our official bid. If you want a project bid, then **you** will need to identify the specific number and location of displacements you want removed. We will then submit a firm bid for your project. To obtain a fair bid though, it falls on you to identify the repairs that you want completed so that all participants are bidding the same work.

If you care about the quality of your repairs, we will consider matching any competitive bid that offers to make the same number of repairs as ours.

**The information provided in this proposal is considered confidential between Georgia Safe Sidewalks and its client, and should not be reproduced or shared with any other organization. In no way does the information included in this inspection transfer ownership of sidewalks or responsibility for your sidewalk maintenance responsibilities to Georgia Safe Sidewalks.**

**Safety & Insurance:** Georgia Safe Sidewalks is a corporation registered in the state of Georgia. We maintain the highest safety standards using OSHA approved safety equipment for employees and conduct regular safety and health screenings. Copies of our W9, liability insurance, auto and workers compensation insurance are available upon request. We have worked in dense urban environments, residential neighborhoods, historic districts, and retail/business environments with no disruption to daily activities.

**Warranty on Service:** No warranty in the form of duration after repair is offered. It is impossible to warranty work against the acts of nature that create vertical displacements in walkways such as growth of tree roots, shifting ground, etc. Our guarantee for our repair is as follows:

- All displacements will be removed to a 0” height difference.
- The entire displacement will be removed.
- The repaired surface will be of a 1:12 slope.
- Adjacent sidewalk slabs will not be affected by the repair.
- Sidewalk debris created by our process will be removed from the work site and recycled.
- There will be no damage to surrounding landscaping, utilities or personal property.



**ADA Guidelines for Trip Hazards:**

Georgia Safe Sidewalks strives to meet compliance with ADA guidelines on each and every trip hazard repair that we make. Those guidelines are as follows:

**303 Changes in Level**

**303.1 General.** Where changes in level are permitted in floor or ground surfaces, they shall comply with 303.

**303.2 Vertical.** Changes in level of ¼ inch (6.4 mm) high maximum shall be permitted to be vertical. Vertical Change in Level

**TECHNICAL CHAPTER 3: BUILDING BLOCKS**

**303.3 Beveled.** Changes in level between ¼ inch (6.4 mm) high minimum and ½ inch (13 mm) high maximum shall be beveled with a slope not steeper than 1:2.

**303.4 Ramps.** Changes in level greater than ½ inch (13 mm) high shall be ramped, and shall comply with 405 or 406.

**Advisory 303.3 Beveled.** Changes in level exceeding ½ inch (13 mm) must comply with 405 (Ramps) or 406 (Curb Ramps).

**405 Ramps**

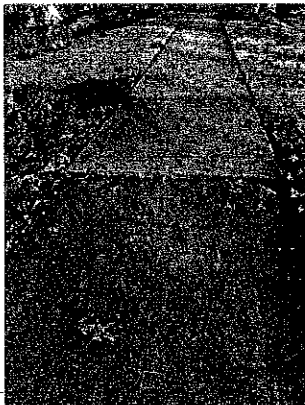
**405.1 General.** Ramps on accessible routes shall comply with 405.

**405.2 Slope.** Ramp runs shall have a running slope not steeper than 1:12.

Information taken directly from Chapter 3: Building Blocks, pages 141-142 of ADAAG.

**Examples of ADA Violations according to these Guidelines**

**Large (1-3/4" high)**



**Medium (7/8" high)**



**Small (1/2" high)**





## 2024 Pricing Policy

### Inch-Foot Definition:

Pricing is based upon the size of each trip hazard and the amount of concrete removed. Each trip hazard is measured for height and length. We use a unit of measure we refer to as "inch-foot".

An inch-foot equals the average height of the vertical displacement measured in inches, then multiplied against the length of the cut measured in feet. The example below represents a typical trip hazard.

$$\frac{\text{Height on high side (1/2") + Height on low side (1/4")}}{2} \times \text{Length of cut (4')} = 1.5 \text{ inch-feet}$$

Incorporating the height of the trip hazard into our pricing is what distinguishes Georgia Safe Sidewalks from our competitors. ADA identifies trip hazards by height, not linear feet.

### Pricing & Volume Discounts:

- ✦ Our pricing is based upon project size. Price discounts vary depending upon the size of your project.

### Minimum Job Charge:

Georgia Safe Sidewalks does charge a minimum to mobilize a crew and equipment. We have a two-tiered minimum. Our minimum for a project within a 60-mile radius of Lawrenceville, GA is \$1,000. Our minimum for a project outside this 60-mile radius of Lawrenceville, GA is \$2,000.



### Sole Source:

Georgia Safe Sidewalks is the only company in Georgia authorized and licensed to use the patented equipment and method for removing sidewalk trip hazards as described by the following United States patent numbers: 6,827,074 – 6,896,604 – 7,000,606 – 7,143,760 – 7,201,644 – 7,402,095 – 9,759,559 – 16,670,737. This makes Georgia Safe Sidewalks a sole source for trip hazard removal using the equipment and methods described in these patent numbers within the state of Georgia.

**Payment Terms:** All invoices are due **15-days** from issuance date of the invoice. Jobs that require multiple weeks for completion will be invoiced weekly, at the end of each weeks' work.

**Inspection Fees:** This proposal may have been created after an inspection was completed and paid for by the customer. In the event the customer has paid a fee for their original inspection, they have 6-months to approve the full project offer in order to receive a rebate on the original inspection.

### Additional Charges:

- Credit card payments are acceptable with an additional fee equal to 3% added to each invoice.
- Any requirements placed upon Georgia Safe Sidewalks as a vendor that requires additional costs to our daily operations or modifications to our offered payment terms and policies will be subject to additional charges.
- If the customer requires custom insurance certificates with a vendor registration fee, a \$200 fee will be added to cover the acquisition of certificates. If the customer requires additional levels of insurance, the added cost to secure those levels will be invoiced to the customer.
- If required to "register" with a vendor management company, a fee of \$200 will be added to the invoice to cover the registration fee requirement.

P.O. Box 336, Nicholson, GA 30565 : Telephone: 770-722-2534 : todd@gasafesidewalks.com : www.gasafesidewalks.com

The information in this proposal is considered confidential and should not be reproduced and/or shared outside of the client/customer relationship. In no way does the information included in this inspection transfer ownership of sidewalks or responsibility for their maintenance to Georgia Safe Sidewalks.



## Offer Summary

The maps and tables on the following pages provide a general location for the vertical displacements that we identified and summarize their severity. Due to limited accuracy with GPS technology this information should only be used for general locations.

### Full Project Offer

This option will remove all of the vertical displacements we identified in our survey with the intention of leaving your property as free of vertical displacements as possible. This is the option that must be selected in order to receive the rebate for any pre-paid inspection fee.

**Price: \$2,510**

**Days to Complete: ~ 1 day**

### Specific Budget Project

Sometimes customers are not able to remove all of the vertical displacements identified in our inspections due to budget restrictions. In this option Georgia Safe Sidewalks is more than happy to complete a project of a smaller value to a budget identified by the customer. In this option the customer usually specifies the budget amount they can afford, and an area to begin by providing us a list of priorities. This option allows the customer to spread their investment out over a period of months or even years.

**Our minimum is \$1,000**

**Projects above \$5,000 are discounted by 2%**

**Projects above \$10,000 are discounted by 4%**

**Projects above \$25,000 are discounted by 6%**

**Projects above \$50,000 are discounted by 8%**

**Projects above \$100,000 are discounted by 10%**

Because we recognize that projects of this type may require time for budgeting, the prices in this proposal are valid for a period of 6 months. Operating costs increase with time, and sidewalk conditions change over time.

- ✦ After 6-months, the prices provided in this quotation will be increased by 5%.
- ✦ If unable to make a decision within 12 months, no problem, the proposal will still be valid, but the prices shown will be increased by 10%.
- ✦ If still unable to make a decision after 2 years, we still want your business. We will honor this proposal for as long as 24-months but the pricing shown at that point will be increased by an additional 10%.

In the event that we are asked to return to a property/community to re-inspect it, the 2<sup>nd</sup> inspection will be conducted at a cost of \$300 per pedestrian mile.



## **Schedule**

We do fill our schedule on a first-come, first-serve basis which means the start date can change as we accept commitments from customers. We can normally remove approximately 90 trip hazards or 120 inch-feet in a single day depending upon their size and location.

**First Available Start Date: February 13<sup>th</sup>**

Our business has grown in popularity enough that we carry a steady 3-month backlog throughout the year. Uncertain business conditions and the fact that our employees are trained, skilled tradesman makes it difficult to add employees when our backlog increases. As a business, we cannot use part time labor. Our employees are skilled at what they do.

Don't exclude us from approval because we have a large backlog. Schedules change, and we sometimes have the ability to split our production team to complete smaller projects sooner than what is identified in this proposal. Tell us your needs and we might be able to work something out sooner.



## Terminology

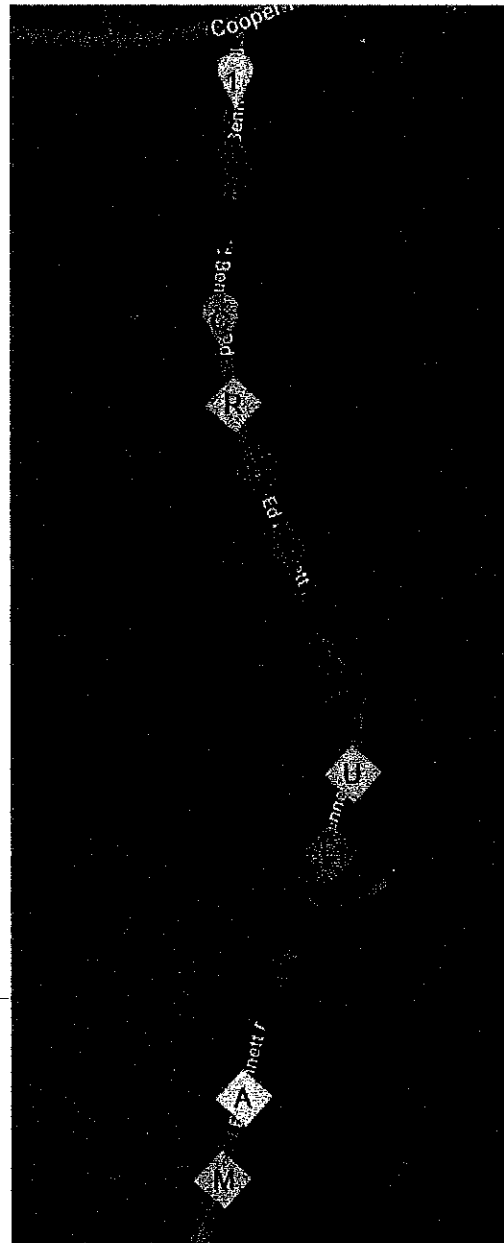
The inspection that this proposal is based upon was visual in nature. During the inspection we identify vertical height changes that we believe to be greater than ¼" and less than 2" in height. To conserve time during a survey, height is estimated only. The actual number of vertical displacements identified may vary once measurements are taken when the project is performed.

Repairs we can make that are included in this repair offer:

- A yellow balloon identifies a small vertical displacement estimated to be between ¼" and ½" high.
- An orange balloon identifies a medium size vertical displacement estimated to be between 5/8" and 1" high.
- A red balloon identifies a large vertical displacement estimated to be between 1-1/8" and 2" high.
- A pink balloon identifies a curb cut that we can make.

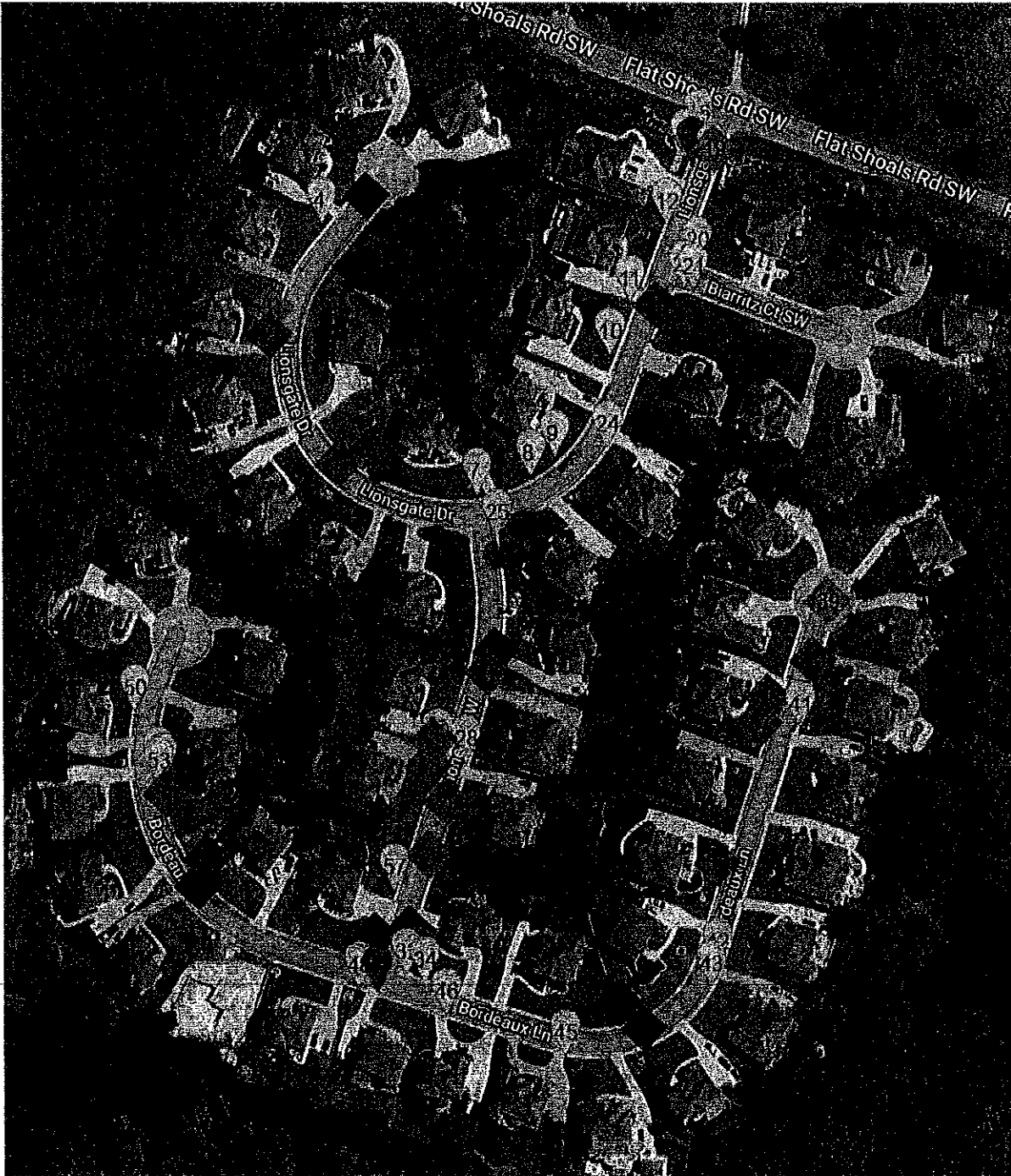
Repairs beyond our services, issues that require another source and is not included in this repair offer:

- A yellow diamond identifies a general condition that requires replacement of the existing sidewalk.
- A blue diamond identifies a walkway that is cracked and broken and is beyond repair. The sidewalk
- A light green diamond identifies a vertical displacement too big for a repair. The displacement is over 2" high and requires new concrete instead of a repair.
- A purple diamond identifies missing sidewalk. This requires new concrete to fill in the missing area.
- A dark green diamond identifies a landscaping issue. It can be buried sidewalk, or overgrown sidewalk. It is not work that we do.
- A light blue diamond identifies a utility issue. This can be any type of object blocking the sidewalk or uneven with the walking surface.
- An orange diamond identifies a wide gap in the walkway that needs filled.
- A red diamond identifies uneven pavers that need to be reset or has other issues.
- A dark blue diamond identifies an issue with a catch basin. It usually means the sidewalk must be replaced around the storm runoff catch basin.
- A pale-yellow diamond identifies an issue/problem with an ADA ramp.
- A gray diamond is a miscellaneous sidewalk problem or comment.





## Full Area Inspected







## Repair Options

### Full Project Offer

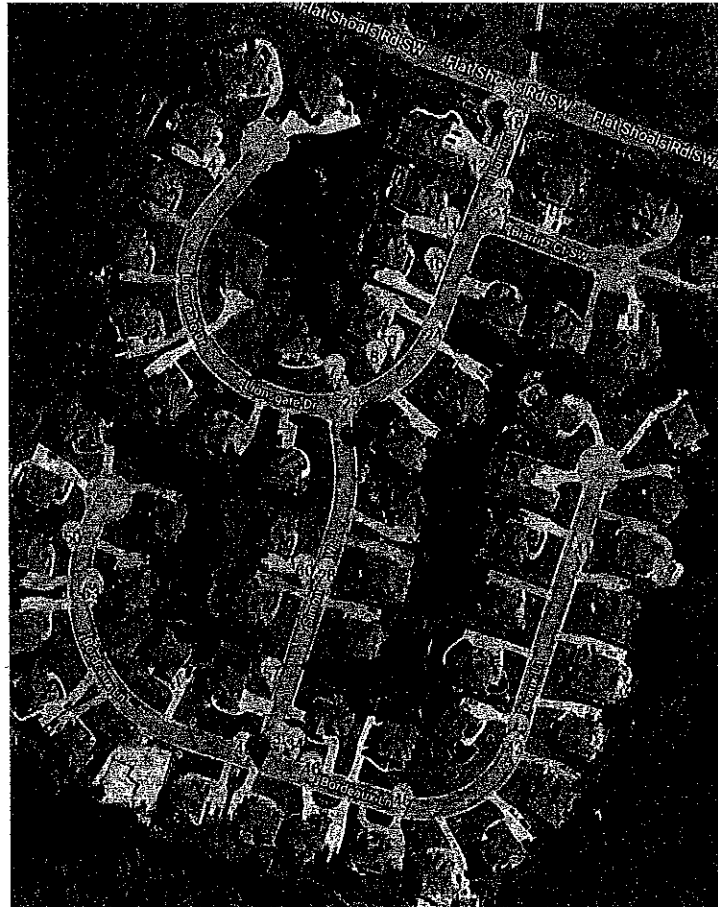
This option will remove all of the vertical displacements we identified in our survey with the intention of leaving your property as free of vertical displacements as possible. This is the option that must be selected in order to receive the rebate for any pre-paid inspection fee.

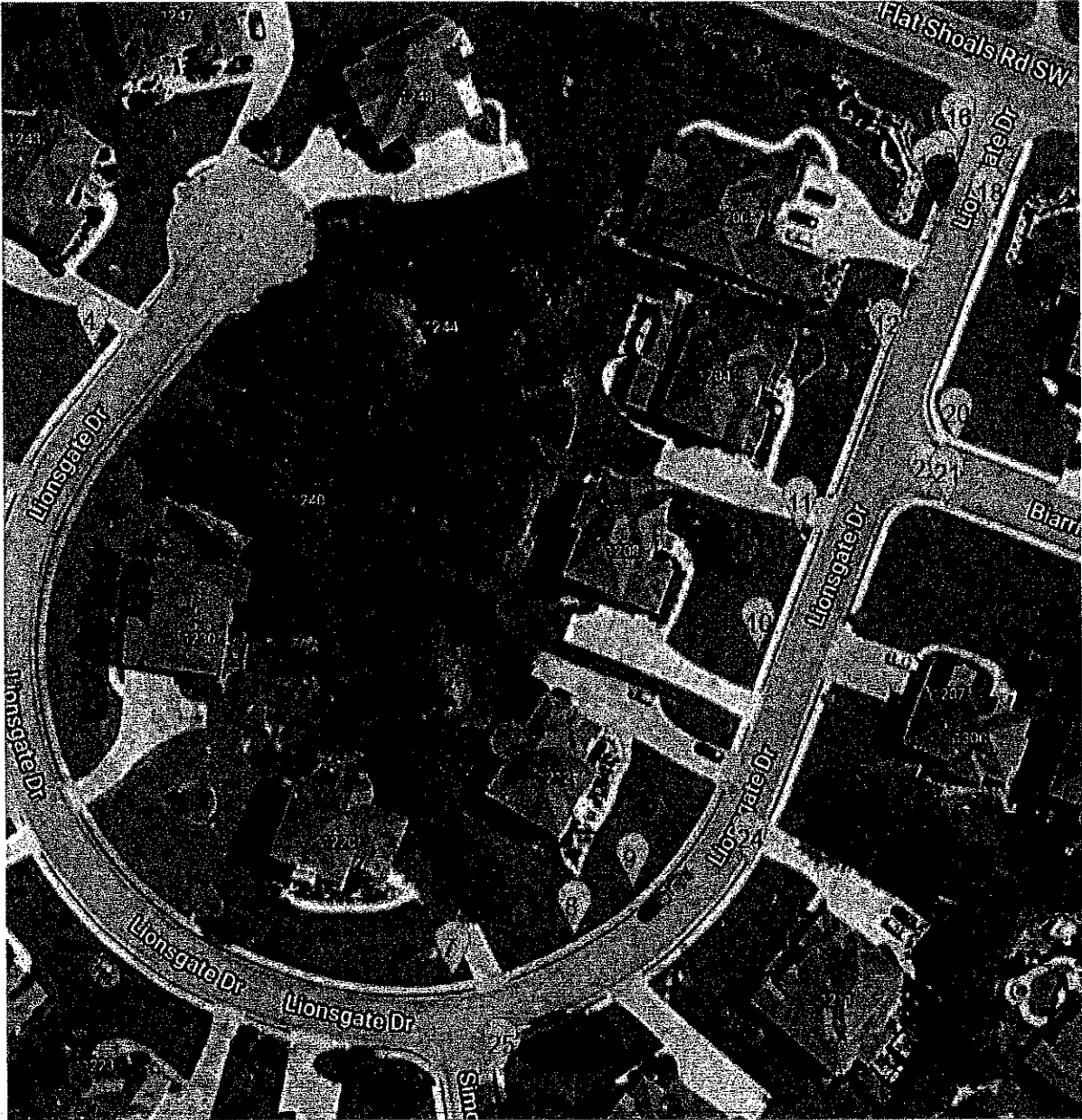
**Price: \$2,510**

**Days to Complete: ~ 1 day**

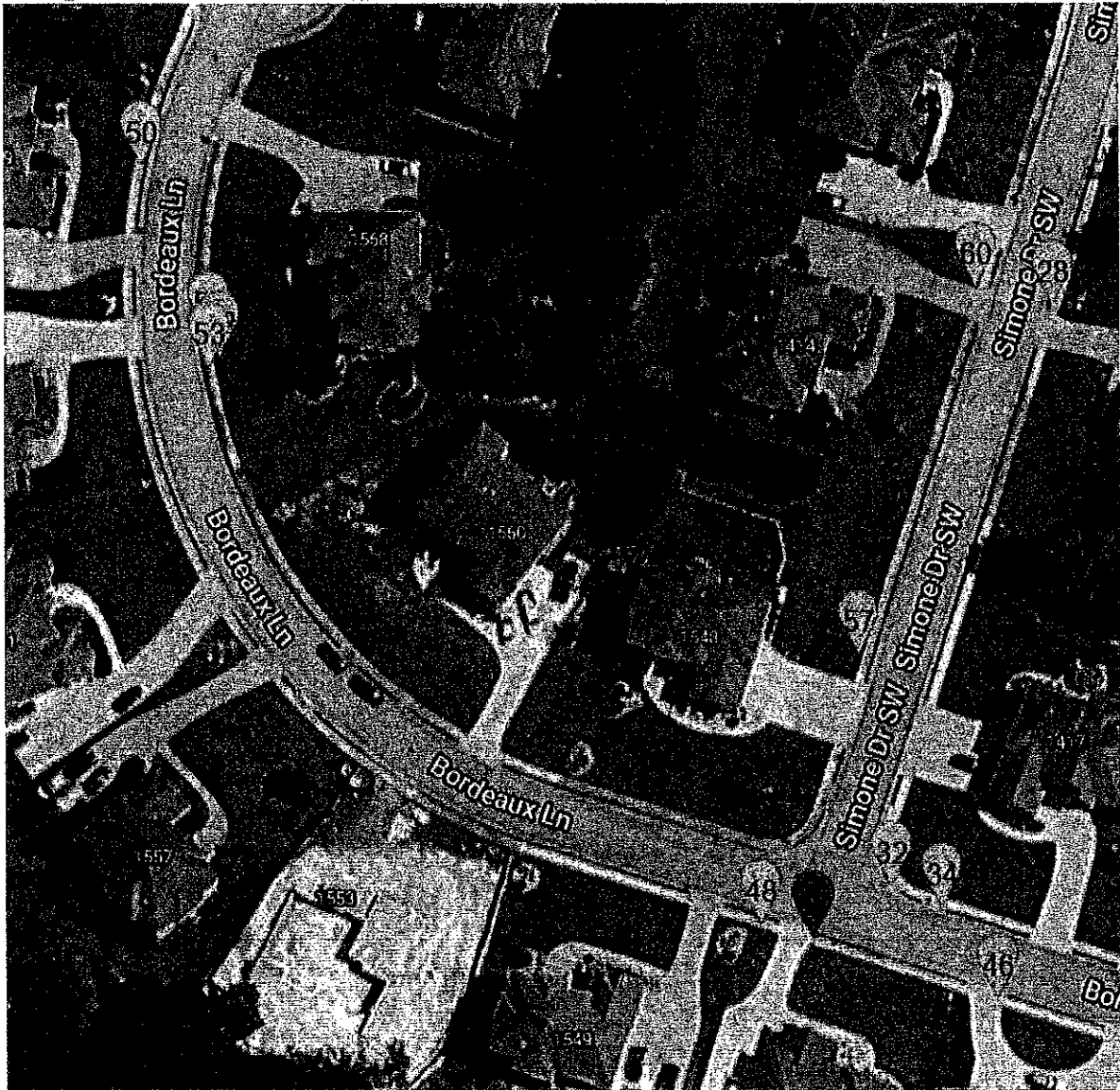
	Small Hazards 1/4" to 1/2"	Medium Hazards 5/8" to 1"	Large Hazards 1-1/8" to 2"		
# of Hazards	31	3	0		
				<b>Total # of Hazards</b>	<b>34</b>
				<b>Curbing (ft)</b>	<b>0 ft</b>

The map below shows all trip & fall hazards identified in our survey that can be removed with our repair process.





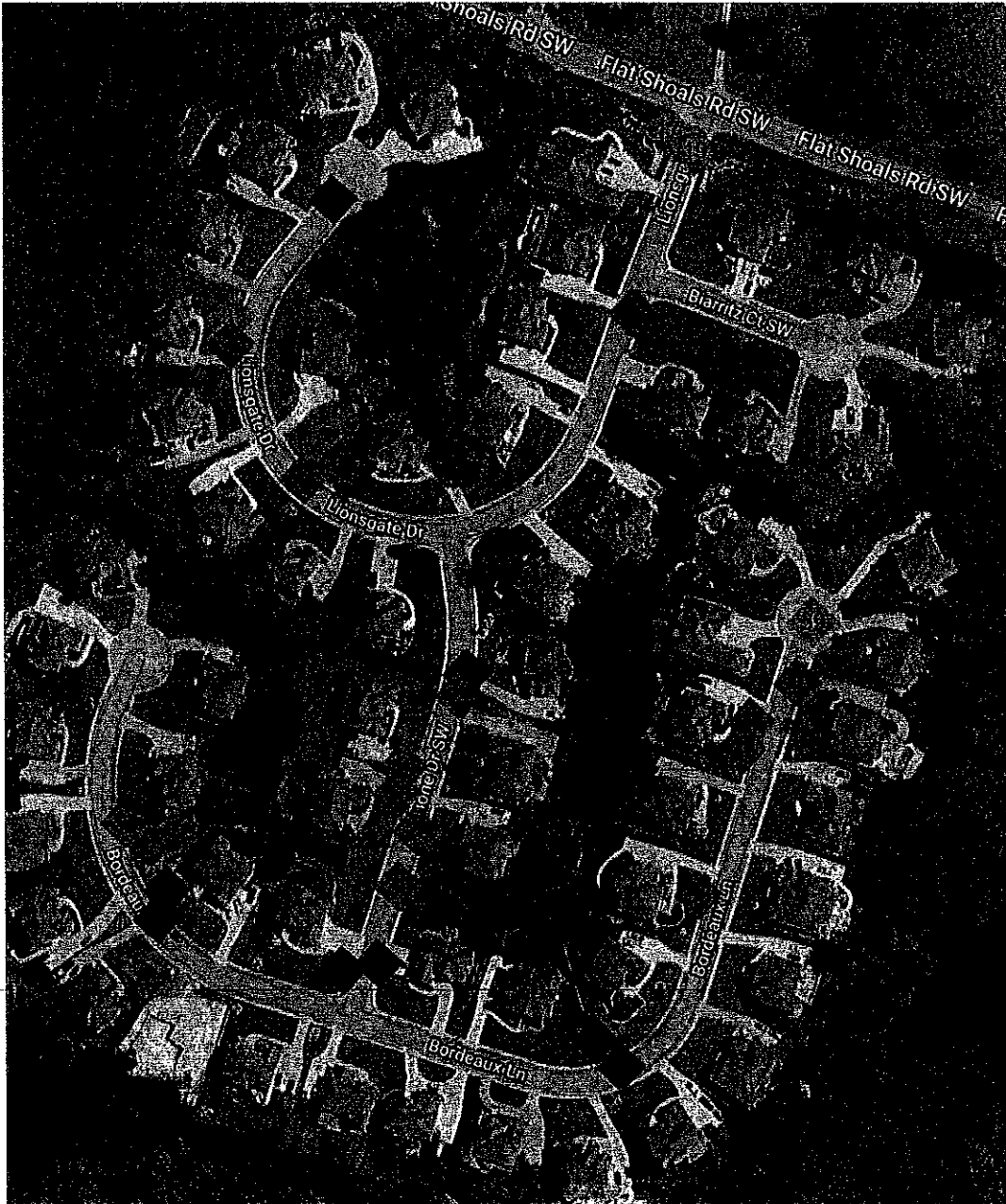






## Non-Cut Issues – Repair not Possible by Georgia Safe Sidewalks

The maps below show areas identified in our survey where our repair process will not correct the issue. These areas need to be dealt with either by a concrete company, general contractor, or your in-house staff.











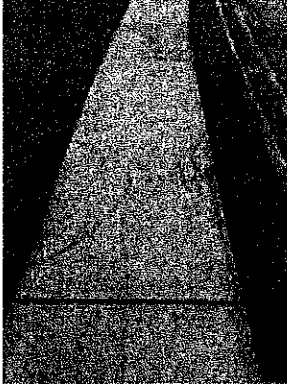




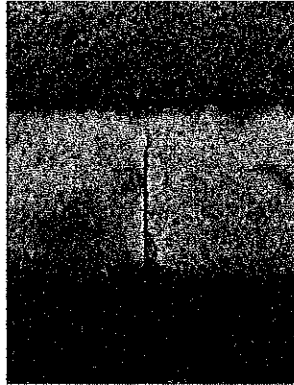
## Summary Table

The following table summarizes our survey and corresponds to the previous maps.

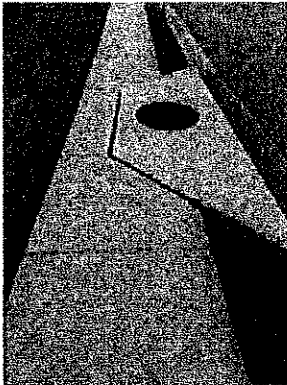
#	Description/Size	#	Description/Size	#	Description/Size
1		21	Sm - basin cut	41	Small
2		22	Sm - basin cut	42	Small
3	fill chipped joint	23		43	Small
4	Small	24	Small	44	Small
5		25	Small	45	Small
6		26		46	Small
7	Small	27		47	Medium
8	Small	28	Small	48	Small
9	Small	29		49	Small
10	Small	30		50	Small
11	Small	31		51	Sm - basin cut
12	Small	32	Sm - basin cut	52	Sm - basin cut
13	Md - basin cut	33	Md - basin cut	53	Sm - basin cut
14	Sm - basin cut	34	Sm - basin cut	54	
15	Sm - basin cut	35		55	
16	Small	36		56	
17	fill gap	37		57	Small
18	Small	38		58	
19	fill gap	39	fill chipped joint	59	
20	Small	40		60	Small



The photo to the left shows an example of broken sidewalk that should be replaced with new concrete. Because we do not provide concrete construction services, this is not an issue we can resolve. This is not included in this repair offer.



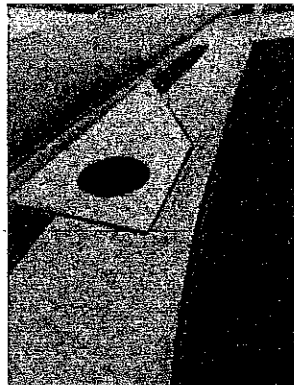
This next photo shows a chipped joint/gap that should be filled. We do not provide this type of work because most of our customers can do it less expensively with their own staff and materials purchased locally.



The photo to the left shows an example of a "basin cut" that is included in this repair offer. We will cut the storm runoff basin cover where it is higher than the surrounding sidewalk to create a flush joint between the two surfaces. 1" is the maximum height for this type of cut.



The photo to the left shows shrubs that should be cut back to fully open the sidewalk to pedestrians. We do not provide this type of work because it is normally the responsibility of the property owner. This is not included in this repair offer.



This next photo shows where sidewalk should be replaced around a storm runoff catch basin. The displacement is over our 1" limit, and the position of the manhole does not allow us to cut an ADA compliant slope. Because we do not provide concrete construction services, this is not an issue we can resolve. This is not included in this repair offer.



## Competitive Analysis

### Versus Demolition & Replacement

Our biggest advantages over removal & replacement is cost and time.

Georgia Safe Sidewalks has 16 years of history removing vertical displacements for organizations throughout Georgia. Our average cost throughout our history to remove a vertical displacement is \$65 per repair. We usually perform a repair to a single sidewalk slab that is most commonly 5' wide x 5' long or 25 square feet of concrete. This places our average repair cost at \$2.60 per square foot.

Research and customer feedback shows that sidewalk removal and replacement costs run between \$20 and \$25 per square foot. Costs associated with removal and replacement include:

- ✦ Labor to demolish the old sidewalk, dispose of waste concrete, prepare site for new sidewalk, pour and finish the new concrete, and clean up the site including possible damage to surrounding utilities and landscaping.
- ✦ Large equipment usage such as trucks, tractors, trailers, compressors, etc.
- ✦ Disposal costs for waste concrete at landfills.
- ✦ Investments into a multitude of small tools used for demolition, site preparation, and concrete finishing.

This proposal represents an opportunity to improve pedestrian safety, compliance with ADA in regards to vertical displacements, and to reduce liability associated with trip and fall injuries.

**Estimated Concrete "not" Removed: 700 square feet**

**Estimated Savings: \$11,100**

### Additional Benefits over Demolition & Replacement

- ✦ Small crew means less disruption to the community during production.
- ✦ Small equipment means no risk of damage to property landscaping, irrigation systems, utilities, and personal property.
- ✦ No threat of vandalism to wet concrete.
- ✦ Faster production means less disruption to the community.
- ✦ Less concrete waste is produced meaning a smaller contribution to landfills, concrete waste is recycled.
- ✦ Small equipment means less greenhouse gas emissions into the environment.



## Versus Grinding & Scarifying

These photos are of typical grinds on sidewalks in Georgia.

The photos at right show the uneven, unprofessional appearance of sidewalk repair by a grinder or scarifier. It shows how the lower slab that didn't need repaired has been scarred and how the trip hazard at the edge of the sidewalk was not removed. They show how the grinder just knocked off the corner of the slab and left a trip hazard at least 1" high. In both instances any money spent on either repair, regardless of how little, was wasted because the repairs are not ADA compliant.



### Additional Benefits over Grinding

- ✦ Faster production. Our customers report that GASS removes as many trip hazards in a single day as a grinding company does in a week.
- ✦ GASS removes the entire trip hazard each and every time.
- ✦ GASS guarantees an ADA compliant repair.
- ✦ GASS is priced equal to or lower than grinding. Most grinding companies charge \$15-\$20 per linear foot. On 5' sidewalks repairing 25 square foot slabs this equates to a cost equal to \$3-\$4 per square foot.



### OSHA Certification

You need to be careful if you are doing your own grinding and asking employees to do this type of work. First, to grind a sidewalk you must utilize equipment that will minimize dust. The equipment being used must include dust abatement.

Second, your employee or contractor performing this work must be wearing the recommended safety gear to work in a dusty environment. Third, any employee of yours, or your vendor must be certified by a physician for permission to work while wearing this safety equipment. If you send an employee to rent a grinder to repair sidewalks without this certification, you are in violation of OSHA regulations and can be fined or held liable in future years for any health issues to that employee.

All employees at Georgia Safe Sidewalks have been physician certified and meet OSHA requirements.

***"Nobody that truly cares about the appearance of their property will allow anybody to tear up their sidewalks with a grinder."***



**VERTICAL DISPLACEMENT REMOVAL AGREEMENT/AUTHORIZATION TO PROCEED**

**PART 1. GENERAL**

Date: This Agreement made this 15th day of November, 202024

**1.1 Contractor**

Georgia Safe Sidewalks  
PO Box 336  
Nicholson, GA 30565  
Office: 770-722-2534  
Email: [Todd@GASafeSidewalks.com](mailto:Todd@GASafeSidewalks.com)  
Contractor's Representative: Todd Fulk

**1.2 Client** (herein called "Client") Rockdale County

Project Address Location:  
\_\_\_\_\_  
\_\_\_\_\_

On Site Contact Phone: \_\_\_\_\_

On Site Contact Email: \_\_\_\_\_

**1.3 Project.** Removal of sidewalk vertical displacements at various locations within the area as defined by the Georgia Safe Sidewalks Proposal dated 11/14/2024. Method shall involve horizontal saw-cutting of vertical displacements from area defined in proposal.

**PART 2. SCOPE OF WORK**

**2.1 Generally.**

A. Georgia Safe Sidewalks shall furnish all labor, materials, equipment, insurance, permits, fees, and all other charges, expenses or assessments of whatever kind or character to complete the Project, consisting of horizontal saw-cutting, removing and disposing of concrete sidewalk vertical displacements designated in the Proposal as set forth in the Georgia Safe Sidewalk Proposal dated 11/14/2024. All concrete shall be disposed of as required by law.

**PART 3. PAYMENT/AUTHORIZATION**

**3.1 CONTRACT PRICE**



A. The Contract Price includes the cost of the Work specified in the Proposal, plus the cost of all insurance, permits, fees, and all charges, expenses or assessment of whatever kind of character.

B. The Client shall pay the Contractor the amount not to exceed \$ 2510.00 total for all concrete cut, removed and disposed of set forth on the Proposal. Total amount is due within 15 days of each invoice submittal by Vendor.

C. Other terms: N/A

**3.2 LEGAL**

- A. **Authorization.** By signing below, I attest that I am the legal representative for the property in question and have read and understand completely the contents of this agreement. By my signature and authorization, Georgia Safe Sidewalks is approved to schedule the work and complete it according to the agreed upon schedule.
- B. Acceptance of this contract/proposal in no way transfers ownership of clients sidewalks or responsibility for maintenance to Georgia Safe Sidewalks.

**MUTUAL RELEASE/INDEMNIFICATION**

*Each party hereby agrees to indemnify and hold harmless the other party from any form of action, lawsuit or claim brought by or on behalf of the indemnifying party's employees, agents or invitees and related in any way to Product/Equipment/Services supplied by Georgia Safe Sidewalks under this Agreement. Each party expressly agrees that the obligation of indemnity under this Paragraph extends to an action, lawsuit or claim alleging negligence of the indemnitee.*

IN WITNESS WHEREOF, the parties have entered into this agreement on the day and year set out at the top of this agreement.

Client: Rockdale County, GA

By: X  
Signature & Title

Osborn Nesbitt, Sr., Chairman  
Printed Name

Date: \_\_\_\_\_

**Georgia Safe Sidewalks**

By: Regina L. Fulk  
Signature & Title

Regina L. Fulk, Vice President

Printed Name

Date: 11/15/2024

**ATTEST:**

\_\_\_\_\_  
Jennifer O. Rutledge, County Clerk

Approved as to form

\_\_\_\_\_  
M. Qader A. Baig, County Attorney

