



NOTICE OF EQUIPMENT TRANSFER/SURPLUS

*** YOU MUST NOW INCLUDE PHOTOS OF ITEMS FOR SURPLUS OR REMOVAL ***

THE Parks & Recreation (61-6120) DEPARTMENT IS TRANSFERRING THE FOLLOWING FIXED ASSETS:

DESCRIPTION:	SERIAL #	ASSET #	OPERABLE Y / N
2002 Ford Explorer 4x2	1FMZU62K02UD43508	PR4	Y
Mileage: 142,442 Past its useful life as a county vehicle, Leaking Oil, Paint Coming Off			

(CHECK APPROPRIATE SELECTION BELOW FOR TRANSFER OR SURPLUS)

THE FIXED ASSETS LISTED ABOVE WERE TRANSFERRED TO THE _____ DEPARTMENT.

THE FIXED ASSETS LISTED ABOVE WERE TRANSFERRED TO THE MOTOR POOL/PUBLIC WORKS DEPAR

This form goes to the receiving department along with the equipment. After receiving department gets all of the equipment being transferred, sign this form and forward to the Finance Department. At this time the equipment is to be removed from the transferring department's fixed assets and added to the receiving department's fixed assets. Please forward the Finance Department an updated copy of your current fixed asset / inventory lists.

OR

THE FIXED ASSETS LISTED ABOVE WERE SURPLUSED TO THE DEPARTMENT CHECKED BELOW.

SURPLUSED TO PARKER RD. BUILDING (FURNITURE ,EQUIPMENT ,COMPUTERS, ETC.)

SURPLUSED TO FLEET SERVICES (VEHICLES)

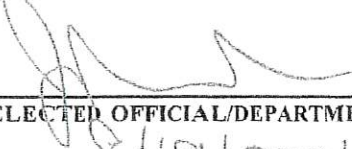
SURPLUSED TO FLEET SERVICES (VEHICLES)

Eligible for disposal or recycling. (must include disposal affidavit and photos.)

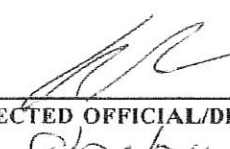
AFTER THE BOC APPROVAL, IT IS THE RESPONSIBILITY OF THE TRANSFERRING DEPARTMENT TO NOTIFY THE MAINTENANCE DEPARTMENT FOR PICKUP AND REMOVAL.

TRANSFERRING DEPARTMENT:

RECEIVING DEPARTMENT:



ELECTED OFFICIAL/DEPARTMENT HEAD



ELECTED OFFICIAL/DEPARTMENT HEAD

8/19/2024

DATE

8/26/24

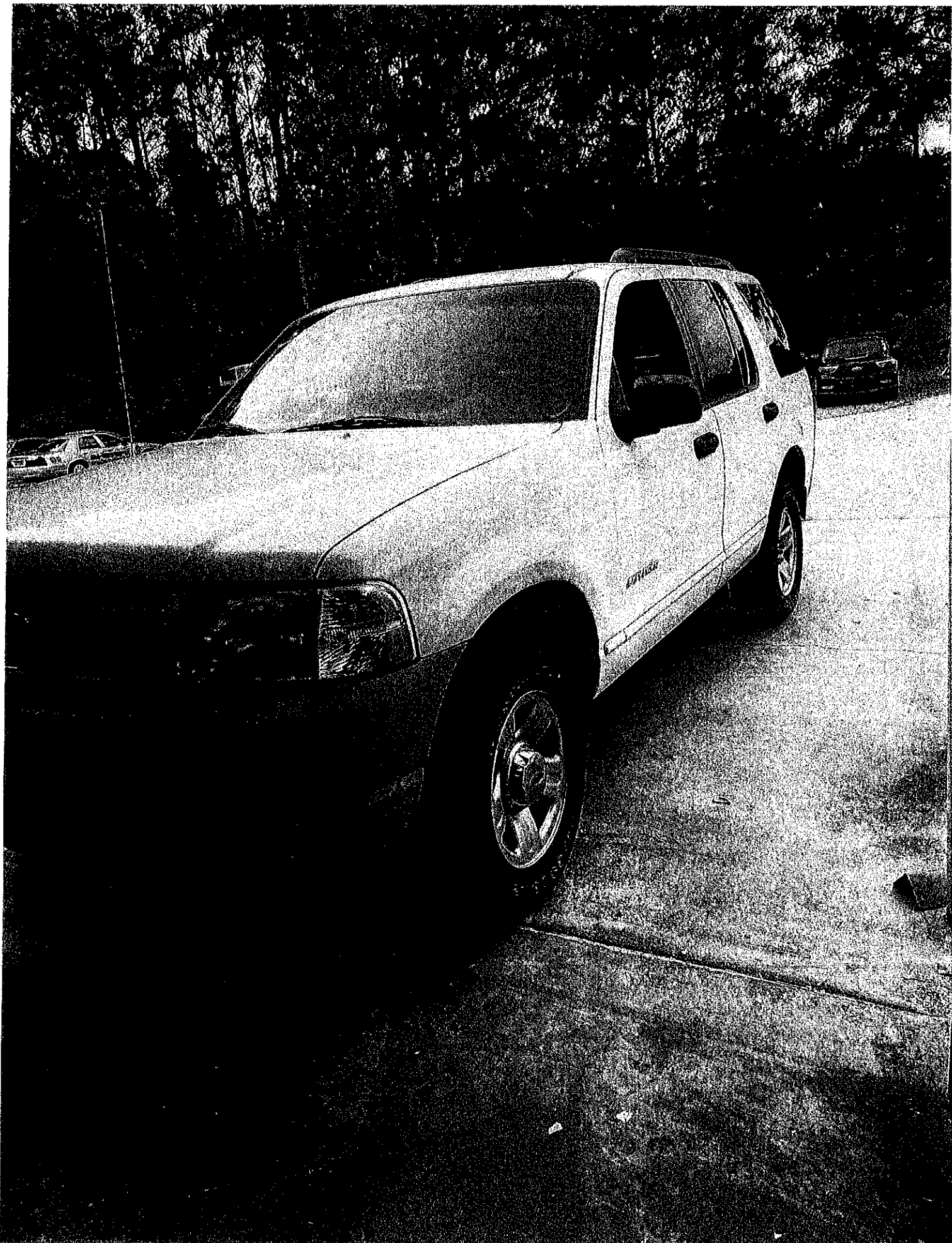
DATE

IF SURPLUSED:

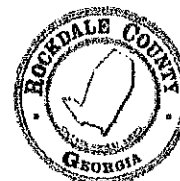
BOARD OF COMMISSIONER'S ACTION (APPROVE / DECLINE)

DATE

2024-5258







NOTICE OF EQUIPMENT TRANSFER/SURPLUS

*** YOU MUST NOW INCLUDE PHOTOS OF ITEMS FOR SURPLUS OR REMOVAL ***

THE Parks & Recreation (61-6120) DEPARTMENT IS TRANSFERRING THE FOLLOWING FIXED ASSETS:

DESCRIPTION:	SERIAL #	ASSET #	OPERABLE Y/N
2005 Ford Explorer XLT 4x2 Mileage: 86,933 Past its useful life as a county vehicle	1FMZU63K45UB28880	PR34	Y

(CHECK APPROPRIATE SELECTION BELOW FOR TRANSFER OR SURPLUS)

THE FIXED ASSETS LISTED ABOVE WERE TRANSFERRED TO THE _____ DEPARTMENT.

THE FIXED ASSETS LISTED ABOVE WERE TRANSFERRED TO THE MOTOR POOL/PUBLIC WORKS DEPAR

This form goes to the receiving department along with the equipment. After receiving department gets all of the equipment being transferred, sign this form and forward to the Finance Department. At this time the equipment is to be removed from the transferring department's fixed assets and added to the receiving department's fixed assets. Please forward the Finance Department an updated copy of your current fixed asset / inventory lists.

OR

THE FIXED ASSETS LISTED ABOVE WERE SURPLUSED TO THE DEPARTMENT CHECKED BELOW.

SURPLUSED TO PARKER RD. BUILDING (FURNITURE ,EQUIPMENT ,COMPUTERS, ETC.)

SURPLUSED TO FLEET SERVICES (VEHICLES)

SURPLUSED TO FLEET SERVICES (VEHICLES)

Eligible for disposal or recycling. (must include disposal affidavit and photos.)

AFTER THE BOC APPROVAL, IT IS THE RESPONSIBILITY OF THE TRANSFERRING DEPARTMENT TO NOTIFY THE MAINTENANCE DEPARTMENT FOR PICKUP AND REMOVAL.

TRANSFERRING DEPARTMENT:

RECEIVING DEPARTMENT:

ELECTED OFFICIAL/DEPARTMENT HEAD

ELECTED OFFICIAL/DEPARTMENT HEAD

8/19/2024
DATE

8/26/24
DATE

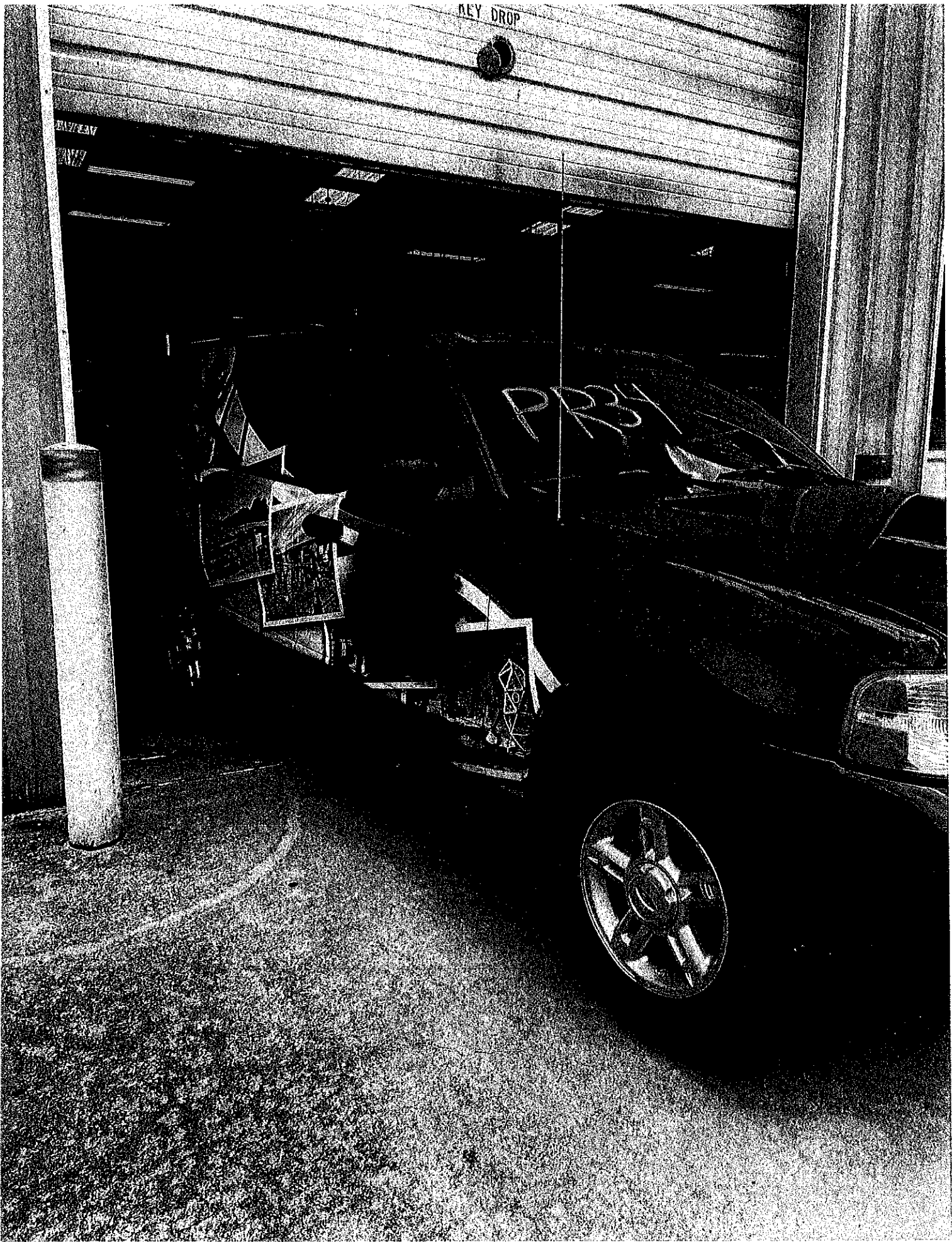
IF SURPLUSED:

BOARD OF COMMISSIONER'S ACTION (APPROVE / DECLINE)

DATE



KEY DROP





ROCKDALE COUNTY
FLEET SERVICES
1001 W. 10th Street, Rockdale, IL 60410
708-783-6315

PARIS & SERVICE
ENTRANCE