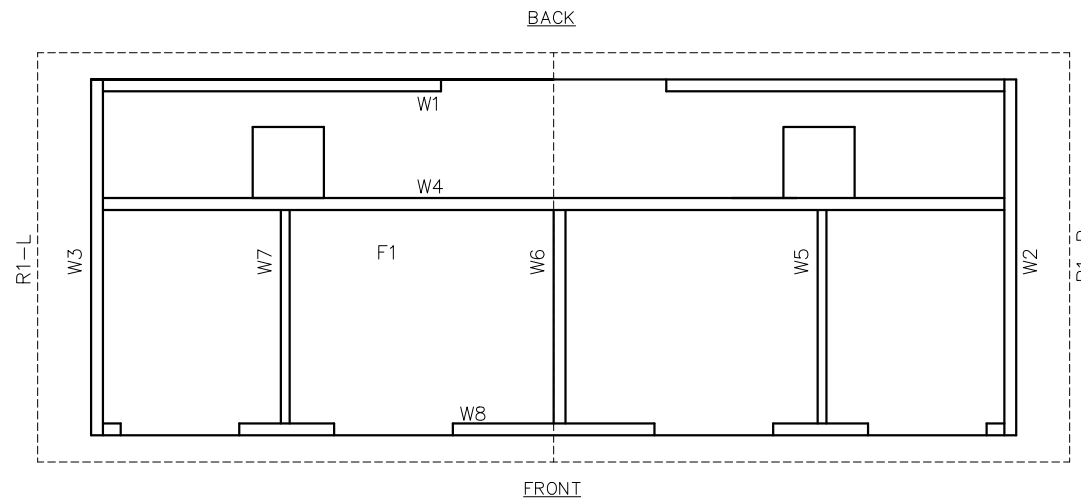


# SANTIAGO

## NOTES

- BUILDING IS DESIGNED TO COMPLY WITH THE 2012 INTERNATIONAL BUILDING CODE (IBC)
- DESIGN COMPLIES WITH THE PROVISIONS OF THE 2012 IBC CODE FOR THE FOLLOWING LOADS:  
 GROUND SNOW LOAD = 250 PSF  
 ROOF SNOW LOAD = 210 PSF  
 FLOOR LOAD = 400 PSF  
 IBC DESIGN SPECTRAL RESPONSE  $S_s = 0.477$ ,  $S_1 = 0.143$   
 SITE CLASS D  
 SEISMIC USE GROUP: II  
 SEISMIC DESIGN CATEGORY: D  
 BEARING WALL SYSTEM  $R = 4.0$   
 A5 - INTERMEDIATE PRECAST SHEARWALLS  
 BASIC WIND SPEED = 150 MPH (3-SECOND GUST)  
 WIND EXPOSURE C,  $I = 1.0$
- BUILDING TYPE: IBC TYPE V-B  
 OCCUPANCY: U  
 EXTERIOR WALLS: 1-HR RATED PER IBC TABLE 721.1(2), ITEM 4-1.1  
 MINIMUM DISTANCE TO PROPERTY LINE: 10 FEET
- CONCRETE STRENGTH  $f'_{ci} = 2500$  PSI INITIAL  $f'_{c} = 5000$  PSI  
 FINAL AIR ENTRAINMENT  $5\ 1/2\% \pm 1\%$  IN PLASTIC CONCRETE.  
 REINFORCING STEEL: #3 GRADE 40, #4 AND LARGER GRADE 60  
 MINIMUM LAP 18" AT SPLICES. TIE BARS WITH DOUBLE ANNEALED  
 16 GA IRON WIRE. REINFORCING TO BE PLACED IN CENTER  
 OF PANEL UNO.  
 WELDED WIRE FABRIC(W.W.F.): 4x4xW8xW8,  $F_y=65$  KSI (OR EQUIVAL).  
 COMPLY WITH ASTM A82, SMOOTH WIRE, MIN. LAP 2 SQUARES.
- EMBEDDED ITEMS IDENTIFIED ON DRAWINGS(i.e. PS-2, R301)  
 REFER TO CXT STANDARD EMBEDMENT CATALOG.
- BACK OF PANELS TO HAVE SMOOTH TROWEL FINISH U.N.O.  
 ALL SURFACES TO BE TEXTURED ARE NOTED ON PANEL DWG'S
- REFER TO SEPARATE CXT INCORPORATED SPECIFICATIONS  
 COVERING DESIGN, MATERIALS, PRODUCTION, AND INSTALLATION  
 CRITERIA FOR SPECIFIC STYLE OF BUILDING.
- ALL REBAR BENDS ARE TO HAVE A MINIMUM RADIUS  
 OF 6x THE BAR DIAMETER.
- IF THE PRIMARY PURPOSE OF THE INTERIOR SPACE IS ASSOCIATED WITH HUMAN COMFORT  
 A SPACE HEATING SYSTEM MUST BE PROVIDED IN ACCORDANCE WITH 2012 IBC SECTION  
 1204.1 (NOT BY CXT) CONSTRUCTION COMPLIES WITH THE SPECIAL INSPECTION.
- ADEQUATE PLUMBING FACILITIES MUST BE PROVIDED IN ACCORDANCE WITH 2012 IBC  
 SECTION 2902.3.2(NOT BY CXT)
- INSTALLATION TO MEET APPLICABLE LOCAL, STATE & FEDERAL CODES, BY OTHERS.

## PANEL MARK NO. KEY PLAN



## INDEX OF DRAWINGS

NO.	TITLE
S-01	COVER SHEET
S-02	HANDLING INSTRUCTIONS
S-03	FLOOR PLAN
S-04	BUILDING ELEVATIONS
S-05	BUILDING ELEVATIONS
S-06	BUILDING INTERIOR ELEVATIONS
S-07	DETAILS
S-08	WALL PANEL W1
S-09	WALL PANEL W2
S-10	WALL PANEL W3
S-11	WALL PANEL W4, EMBEDS
S-12	WALL PANEL W4, BLOCKOUTS
S-13	WALL PANEL W5, W6, W7
S-14	WALL PANEL W8
S-15	FLOOR SLAB F1
S-16	ROOF SLAB R1-R
S-17	ROOF SLAB R1-L
S-18	FOUNDATION DETAIL
S-19	FLOOR DRAIN LOCATIONS & BELOW FLOOR PIPING
S-20	PLUMBING PLANS & NOTES
S-21	PLUMBING SCHEDULE & DIAGRAMS
S-22	ELECTRICAL PLAN, DETAIL & SCHEDULES
S-23	MATERIAL LIST

## APPLICABLE CODES

2012 INTERNATIONAL BUILDING CODE W/ COLORADO AMMENDMENTS  
 2014 NATIONAL ELECTRIC CODE W/ COLORADO AMMENDMENTS  
 2012 INTERNATIONAL PLUMBING CODE W/ COLORADO AMMENDMENTS  
 2012 INTERNATIONAL MECHANICAL CODE W/ COLORADO AMMENDMENTS  
 2012 INTERNATIONAL ENERGY CONSERVATION CODE W/ COLORADO AMMENDMENTS

## SPECIAL CONDITIONS AND/OR LIMITATIONS

ACCESSIBILITY TO THIS BUILDING, INCLUDING PARKING, IS TO BE PROVIDED BY OTHERS AND  
 CONSTRUCTED IN ACCORDANCE WITH ALL LOCAL BUILDING CODES.

CXT INCORPORATED  
 CONTROLLED COPY  
 IF THIS STATEMENT IS NOT PRINTED  
 IN RED, DOCUMENT MAY NOT BE CURRENT  
 ISSUED FOR PRODUCTION BY Robert D. Walker

3808 N. Sullivan Bldg. #7 Spokane, WA 99216



**Precast Products**

901 N. Highway 77 Hillsboro, TX 76645

PROJECT TITLE  
**SANTIAGO**  
 BUILDING NUMBER S-194

NOTICE  
 The information contained herein is proprietary and the  
 exclusive property of CXT Incorporated. The information  
 may only be used by the original recipient for the purpose  
 intended. Reproduction or distribution of this information  
 is strictly prohibited without the prior written consent of  
 CXT Incorporated. By allowing use of this information,  
 CXT Incorporated grants no warranty, express or implied,  
 including a warranty of merchantability or of fitness for a  
 particular purpose.

CXT Incorporated

REV.	DESCRIPTION	APPROVAL	DATE
SCALE	3/16"=1'-0"	DATE	1-20-17
DRAWN	MATT BRANCO	FILE NO.	S-194
CHECKED	S-194	PLOT	64

COVER SHEET

DWG NO.	SHEET	REV.
S-01	1	23

CASTING TOLERANCES:  
 OVERALL LENGTH OR WIDTH  
 10 S OR UNDER =  $\pm 1/8"$   
 10 TO 20 S =  $+1/8"$ ,  $-3/16"$   
 20 TO 40 S =  $\pm 1/4"$   
 TOTAL THICKNESS =  $-1/8$ ,  $+1/4$   
 VARIATION FROM SQUARE =  $\pm 1/8$  PER 6 S OF DIAGONAL  
 LOCAL SMOOTHNESS =  $1/4"$  IN 10 S  
 SWEEP =  $\pm 1/4"$   
 POSITION OF TENDONS =  $\pm 1/4"$   
 POSITION OF BLOCKOUTS =  $\pm 1/4"$   
 SIZE OF BLOCKOUTS =  $\pm 1/4"$   
 POSITION OF EMBEDS =  $\pm 1/4"$   
 TIPPING AND FLUSHNESS OF PLATES =  $+1/16$ ,  $-1/4$   
 BOWING = LENGTH/360  
 END SQUARENESS =  $\pm 1/8"$

COLORADO STATE TAG & APPROVAL REQ'D

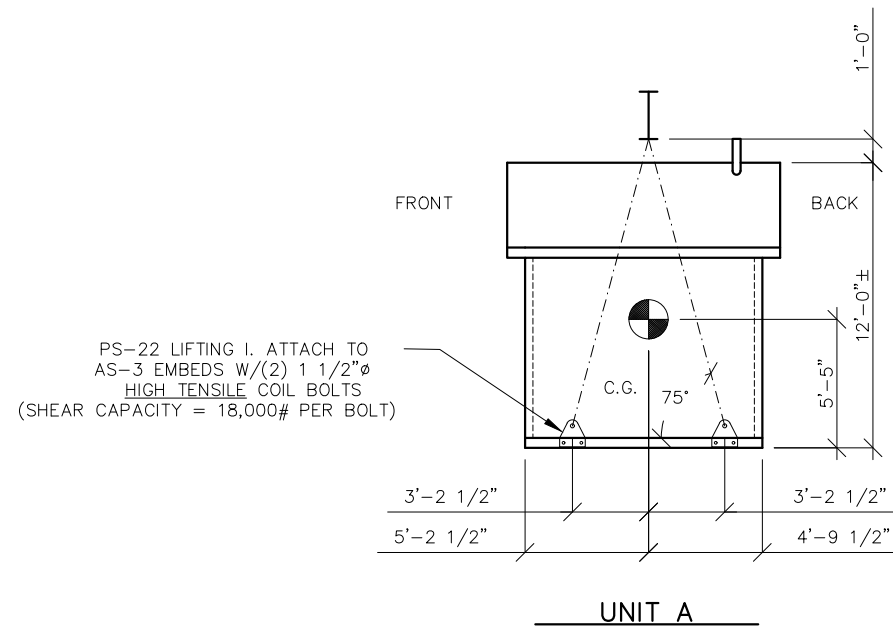
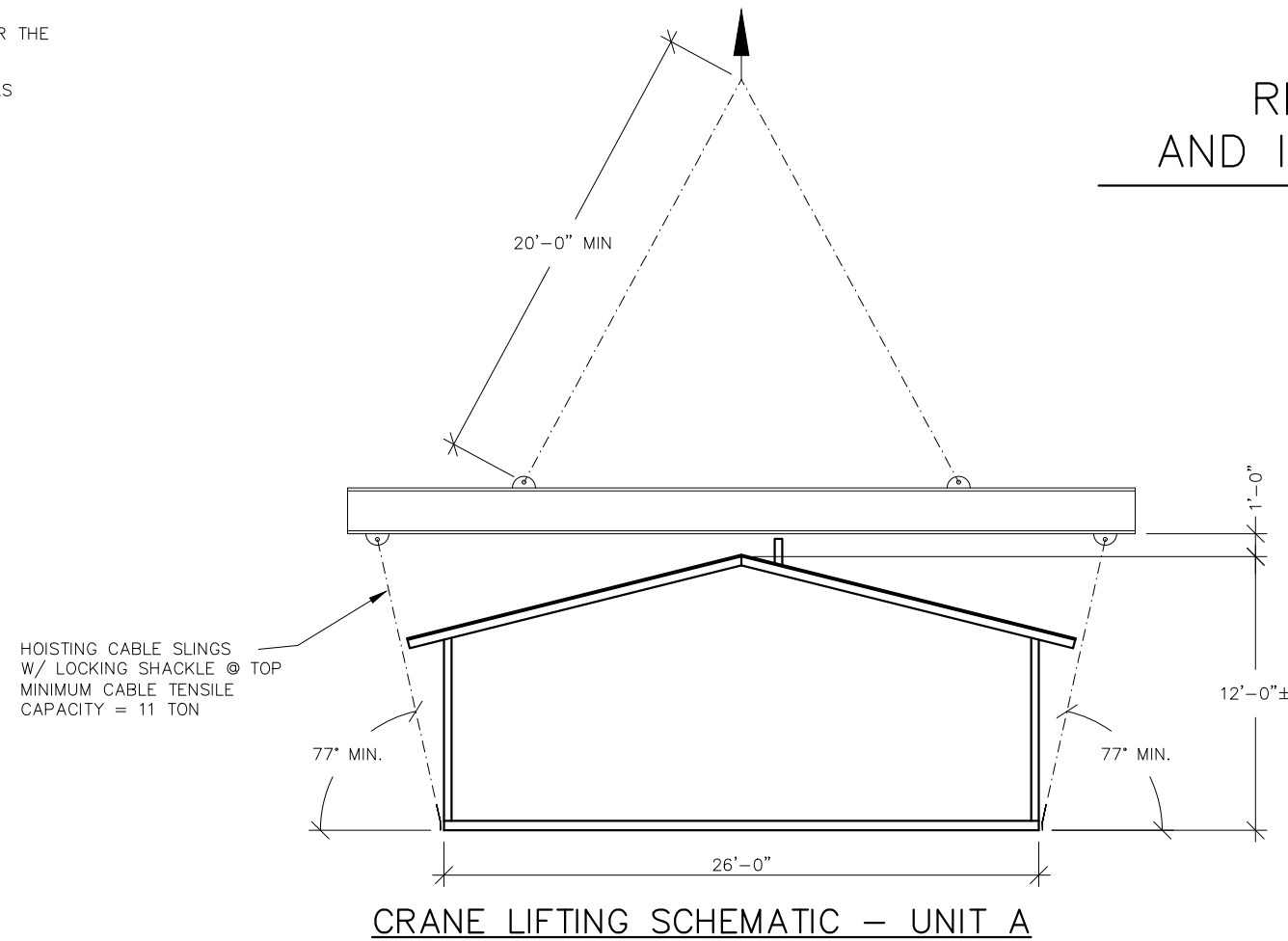
WALL TEXTURE: STUCCO  
 WALL COLOR: GOLDEN BEIGE  
 ROOF TEXTURE: DELTA RIB METAL  
 ROOF COLOR: SALSA RED  
 TRIM PAINT: RICH BROWN

**NOTES:**

1. THE SANTIAGO STYLE BUILDING CONSISTS OF ONE UNIT TO BE PLACED AT THE PROJECT SITE. PROPER SITE PREPARATION AND HANDLING IS ESSENTIAL FOR THE SAFE AND PROPER INSTALLATION OF THE BUILDING.
2. PROVIDE UTILITY CONNECTIONS (PLUMBING & ELECTRICAL) AS REQUIRED AND/OR AS CALLED FOR ON THE DRAWINGS.
3. FILL FLOOR BLOCKOUTS AFTER COMPLETION OF UTILITY HOOKUPS WITH CONCRETE. SLOPE TO DRAIN.

# SANTIAGO

## RECOMMENDED HANDLING AND INSTALLATION INSTRUCTIONS



**NOTES:**

1. C.G. IS APPROXIMATE.

SHIPPING WEIGHTS AND DIMENSIONS S-194				
SECTION	WEIGHT	LENGTH	WIDTH	HEIGHT
UNIT A	82,100	26'-0"	11'-6"	12'-0"

**CRANE LIFTING SCHEMATIC – END VIEW**

CXT INCORPORATED  
CONTROLLED COPY  
IF THIS STATEMENT IS NOT PRINTED  
IN RED, DOCUMENT MAY NOT BE CURRENT  
ISSUED FOR PRODUCTION BY Robert D. Walker

3808 N. Sullivan Bldg. #7 Spokane, WA 99216



901 N. Highway 77 Hillsboro, TX 76645

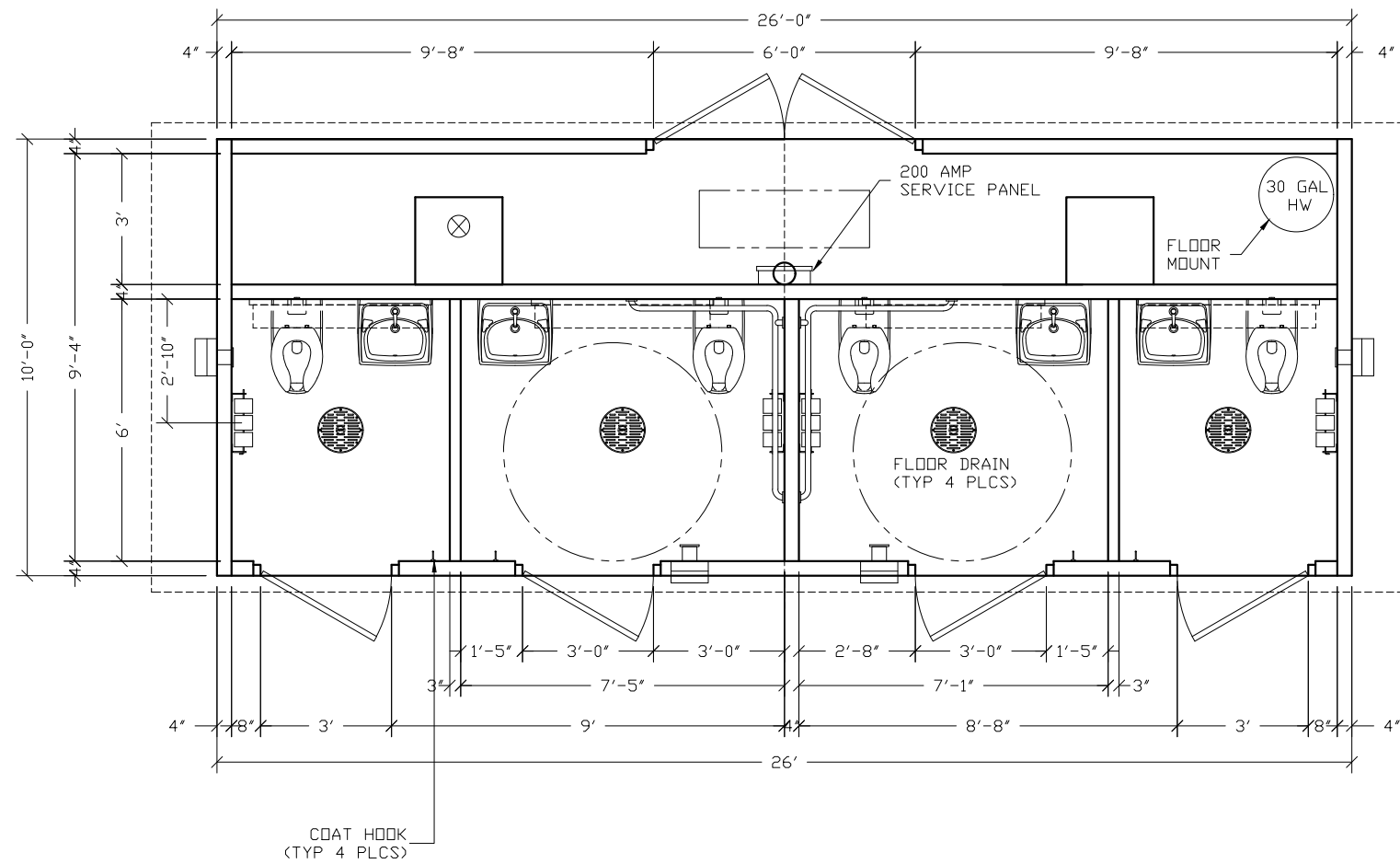
PROJECT TITLE  
**SANTIAGO**  
BUILDING NUMBER S-194

NOTICE  
The information contained herein is proprietary and the exclusive property of CXT Incorporated. The information may only be used by the original recipient for the purpose intended. Reproduction or distribution of this information is strictly prohibited without the prior written consent of CXT Incorporated. By allowing use of this information, CXT Incorporated grants no warranty, express or implied, including a warranty of merchantability or of fitness for a particular purpose.

REV.	DESCRIPTION	APPROVAL	DATE
SCALE	1/8"=1'-0"	DATE	1-20-17
DRAWN	MATT BRANCO	FILE NO.	S-194
CHECKED	RDW	PLOT	96

**HANDLING INSTRUCTIONS**

DWG NO.	SHEET	REV.
S-02	2	23



CXT INCORPORATED  
 CONTROLLED COPY  
 IF THIS STATEMENT IS NOT PRINTED  
 IN RED, DOCUMENT MAY NOT BE CURRENT  
 ISSUED FOR PRODUCTION BY Robert D. Walker

3808 N. Sullivan Bldg. #7 Spokane, WA 99216



**Precast Products**

901 N. Highway 77 Hillsboro, TX 76645

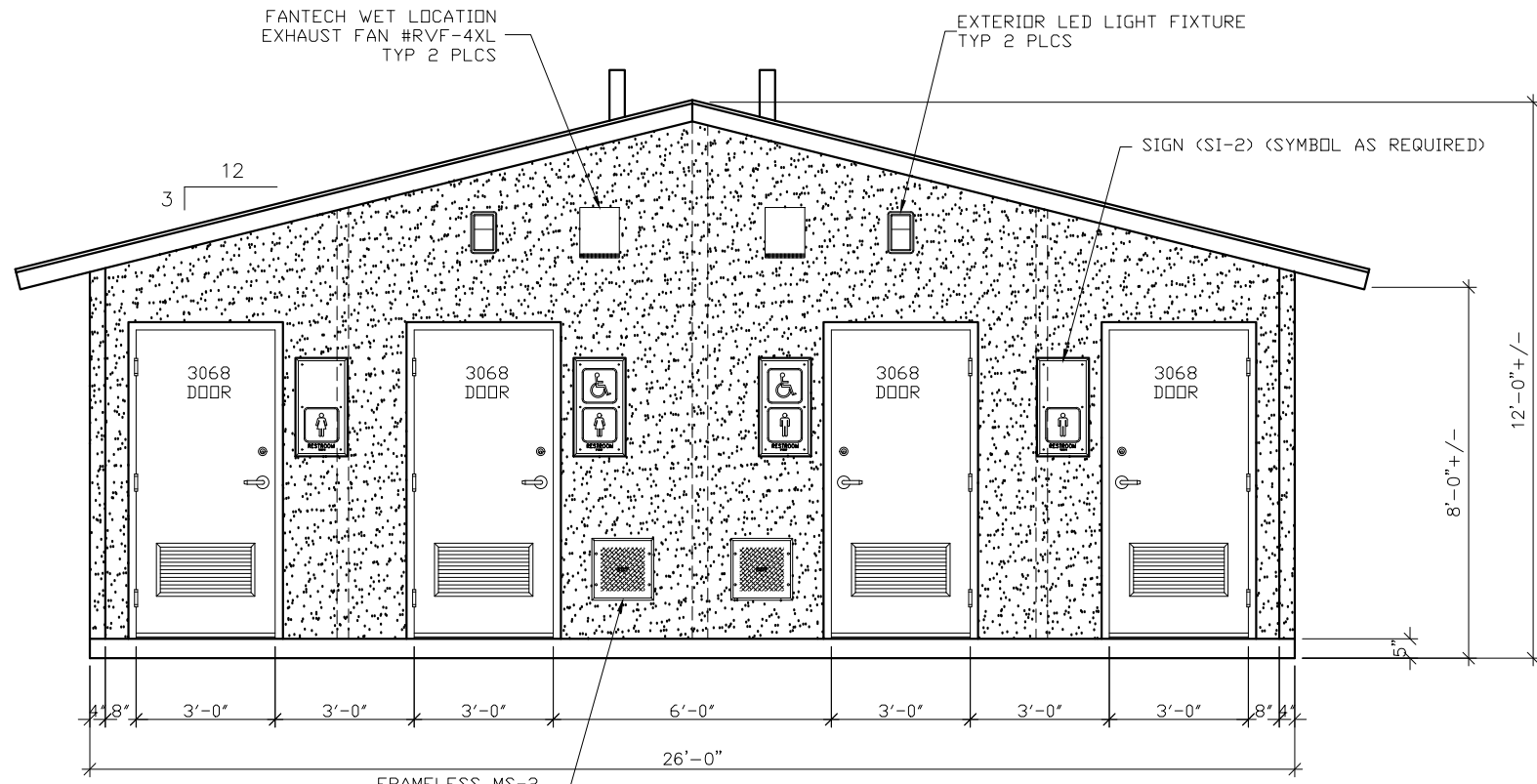
PROJECT TITLE  
**SANTIGAO**  
 BUILDING NUMBER S-194

NOTICE  
 The information contained herein is proprietary and the exclusive property of CXT Incorporated. The information may only be used by the original recipient for the purpose intended. Reproduction or distribution of this information is strictly prohibited without the prior written consent of CXT Incorporated. By allowing use of this information, CXT Incorporated grants no warranty, express or implied, including a warranty of merchantability or of fitness for a particular purpose.

REV.	DESCRIPTION	APPROVAL	DATE
SCALE	1/4"=1'-0"	DATE	1-20-17
DRAWN	MATT BRANCO	FILE NO.	S-194
CHECKED	MSB	PLOT	48

FLOOR PLAN

DWG NO.	SHEET	REV.
S-03	3	23



FANTECH WET LOCATION EXHAUST FAN #RVF-4XL TYP 2 PLCS

EXTERIOR LED LIGHT FIXTURE TYP 2 PLCS

SIGN (SI-2) (SYMBOL AS REQUIRED)

3  
12

3068 DOOR

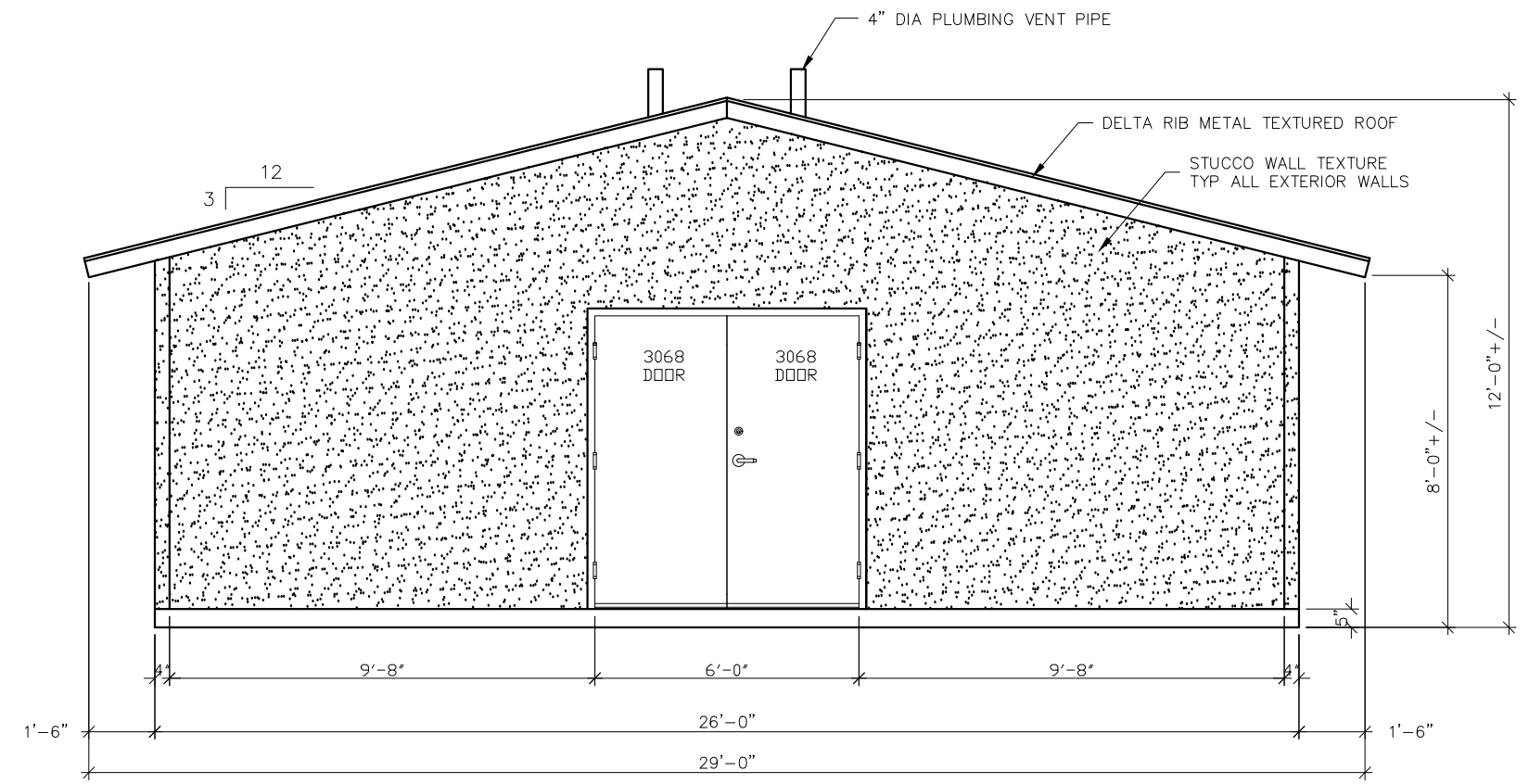
3068 DOOR

3068 DOOR

3068 DOOR

FRAMELESS MS-2 MECHANICAL LOUVER (TYP 2 PLCS)

FRONT ELEVATION



4" DIA PLUMBING VENT PIPE

DELTA RIB METAL TEXTURED ROOF

STUCCO WALL TEXTURE TYP ALL EXTERIOR WALLS

3  
12

3068 DOOR

3068 DOOR

REAR ELEVATION

CXT INCORPORATED CONTROLLED COPY IF THIS STATEMENT IS NOT PRINTED IN RED, DOCUMENT MAY NOT BE CURRENT ISSUED FOR PRODUCTION BY Robert D. Walker

3808 N. Sullivan Bldg. #7 Spokane, WA 99216  
**CXT**  
**Precast Products**  
 901 N. Highway 77 Hillsboro, TX 76645

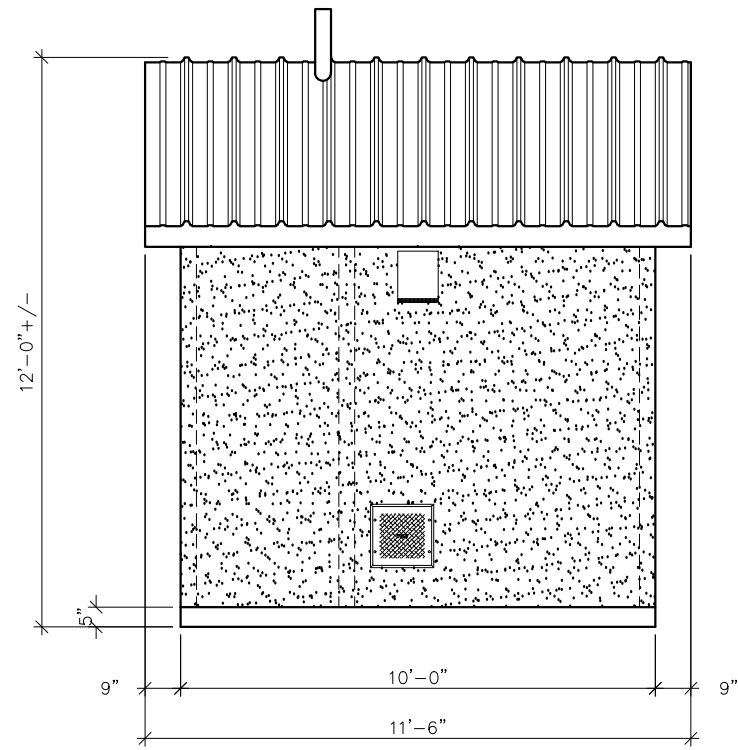
PROJECT TITLE  
**SANTIAGO**  
 BUILDING NUMBER S-194

NOTICE  
 The information contained herein is proprietary and the exclusive property of CXT Incorporated. The information may only be used by the original recipient for the purpose intended. Reproduction or distribution of this information is strictly prohibited without the prior written consent of CXT Incorporated. By allowing use of this information, CXT Incorporated grants no warranty, express or implied, including a warranty of merchantability or of fitness for a particular purpose.  
 CXT Incorporated

REV.	DESCRIPTION	APPROVAL	DATE
SCALE	1/4"=1'-0"		1-20-17
DRAWN	MATT BRANCO	FILE NO.	S-194
CHECKED	RDW	PLOT	48

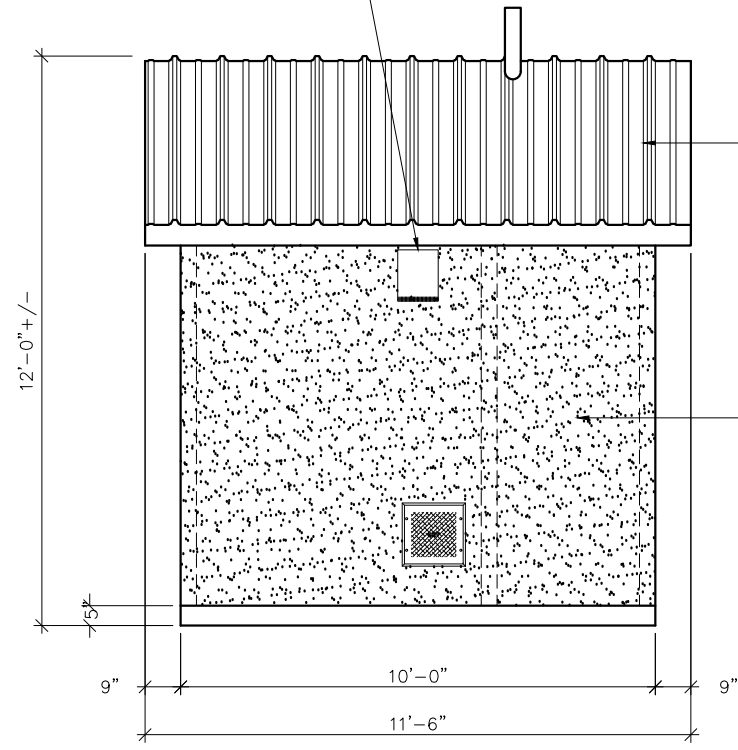
**BUILDING ELEVATIONS**

DWG NO.	SHEET	REV.
S-04	4	23



**LH SIDE ELEVATION**

FANTECH WET LOCATION  
EXHAUST FAN #RVF-4XL  
TYP 2 PLCS



**RH SIDE ELEVATION**

DELTA RIBBED METAL ROOF TEXTURE

STUCCO WALL TEXTURE TYP  
ALL EXTERIOR WALLS

**CXT INCORPORATED  
CONTROLLED COPY**  
IF THIS STATEMENT IS NOT PRINTED  
IN RED, DOCUMENT MAY NOT BE CURRENT  
ISSUED FOR PRODUCTION BY Robert D. Walker

3808 N. Sullivan Bldg. #7 Spokane, WA 99216



**CXT Precast Products**

901 N. Highway 77 Hillsboro, TX 76645

PROJECT TITLE  
**SANTIAGO**  
BUILDING NUMBER S-194

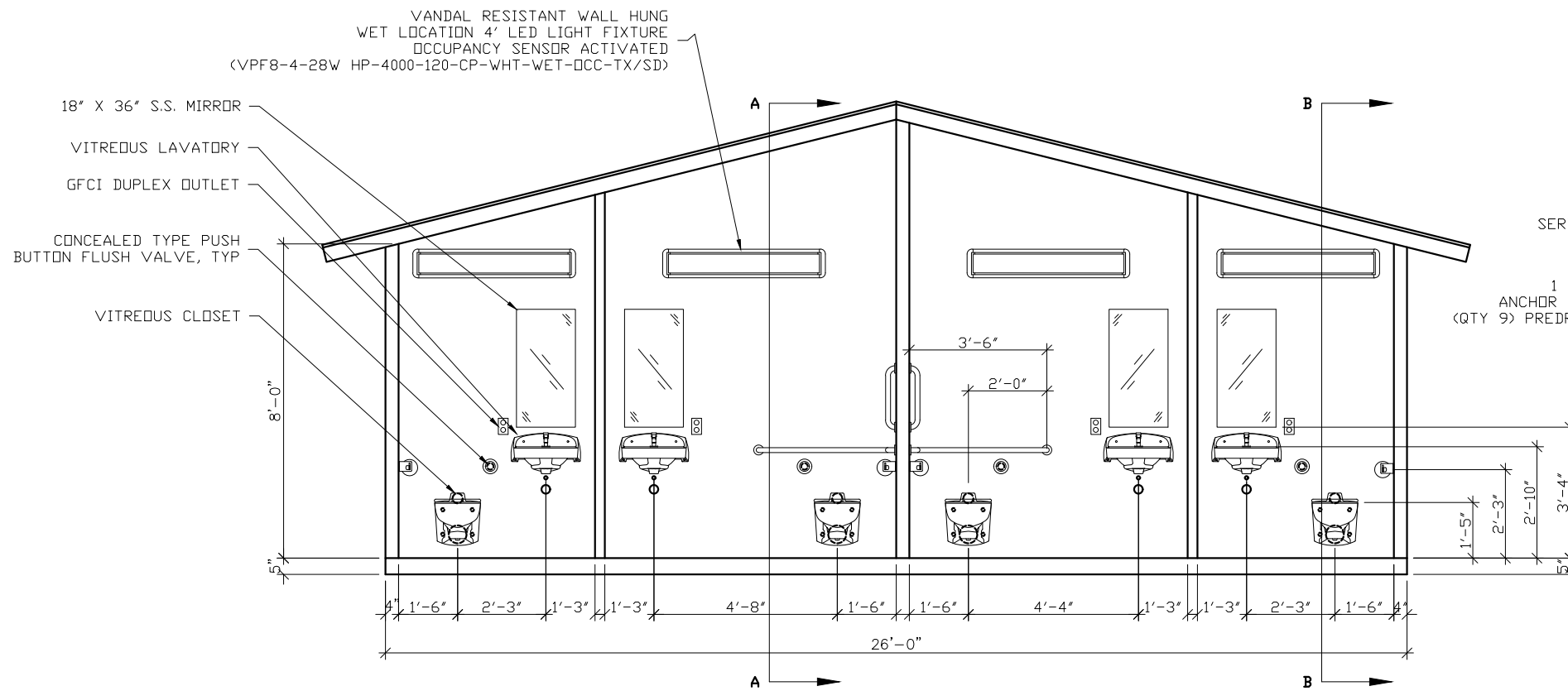
NOTICE  
The information contained herein is proprietary and the exclusive property of CXT Incorporated. The information may only be used by the original recipient for the purpose intended. Reproduction or distribution of this information is strictly prohibited without the prior written consent of CXT Incorporated. By allowing use of this information, CXT Incorporated grants no warranty, express or implied, including a warranty of merchantability or of fitness for a particular purpose.

REV.	DESCRIPTION	APPROVAL	DATE

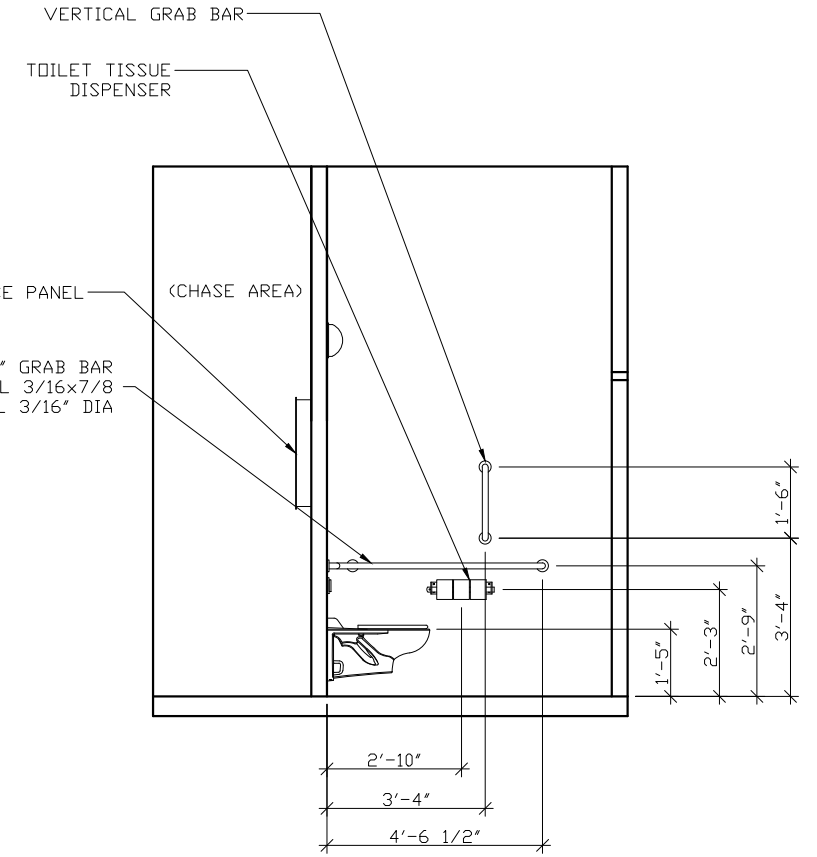
SCALE	1/4"=1'-0"	DATE	1-20-17
DRAWN	MATT BRANCO	FILE NO.	S-194
CHECKED	RDW	PLOT	48

**BUILDING ELEVATIONS**

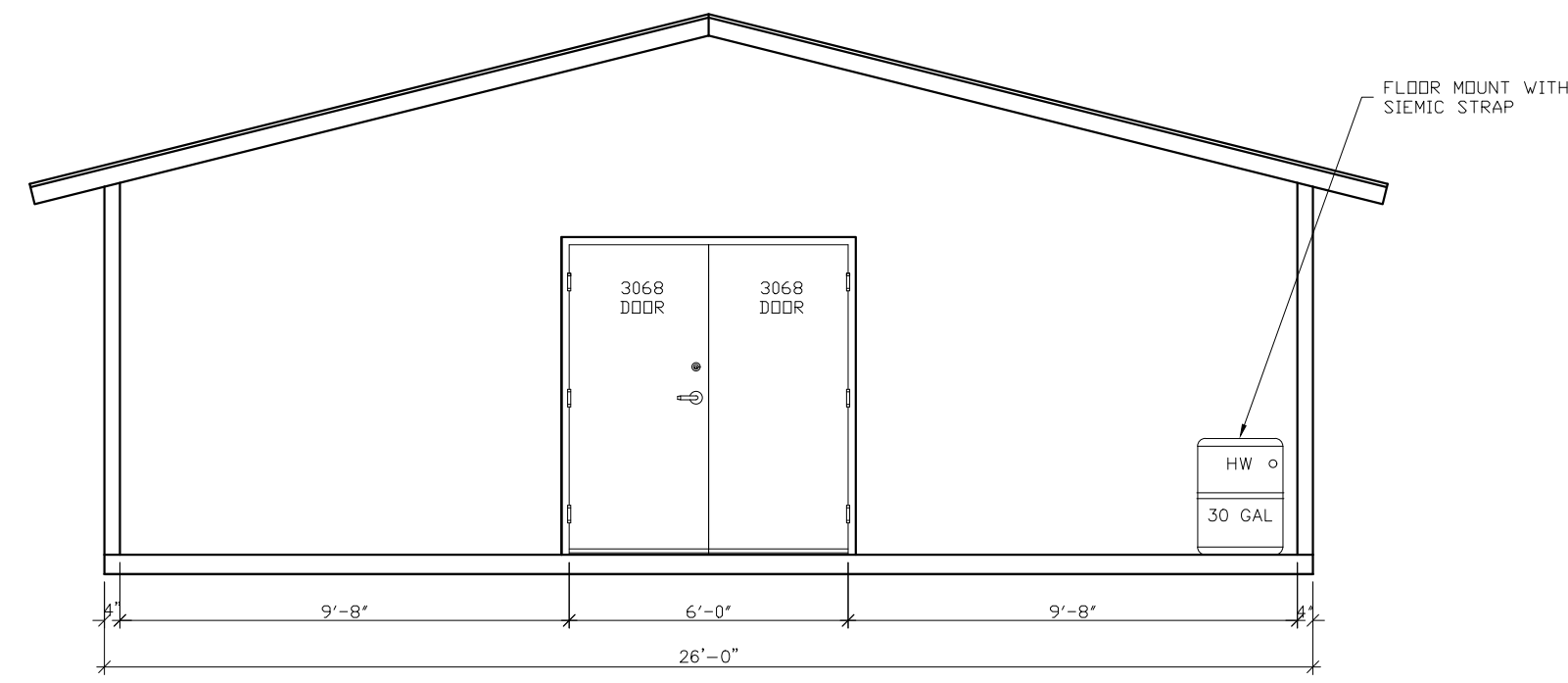
DWG NO.	SHEET	REV.
S-05	5	23



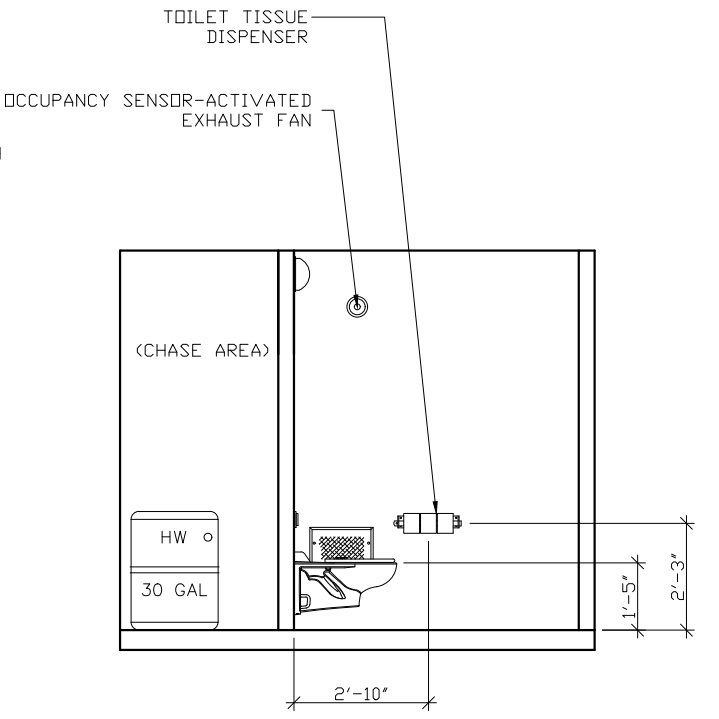
RESTROOM MIDDLE WALL INTERIOR ELEVATION



SECTION A - A



BUILDING BACK WALL INTERIOR ELEVATION



SECTION B - B

CXT INCORPORATED  
CONTROLLED COPY  
IF THIS STATEMENT IS NOT PRINTED  
IN RED, DOCUMENT MAY NOT BE CURRENT  
ISSUED FOR PRODUCTION BY Robert D. Walker

3808 N. Sullivan Bldg. #7 Spokane, WA 99216

**CXT**  
Precast Products

901 N. Highway 77 Hillsboro, TX 76645

PROJECT TITLE  
**SANTIAGO**  
BUILDING NUMBER S-194

NOTICE

The information contained herein is proprietary and the exclusive property of CXT Incorporated. The information may only be used by the original recipient for the purpose intended. Reproduction or distribution of this information is strictly prohibited without the prior written consent of CXT Incorporated. By allowing use of this information, CXT Incorporated grants no warranty, express or implied, including a warranty of merchantability or of fitness for a particular purpose.

CXT Incorporated

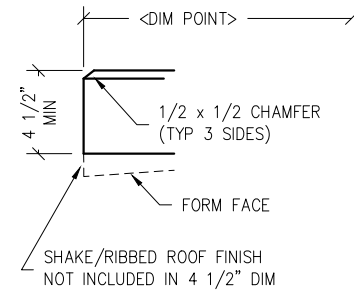
REV.	DESCRIPTION	APPROVAL	DATE
SCALE	1/4"=1'-0"	DATE	1-20-17
DRAWN	MATT BRANCO	FILE NO.	S-194
CHECKED	RDW	PLLOT	48

BUILDING  
INTERIOR ELEVATIONS

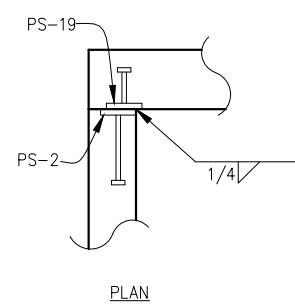
DWG NO. S-06

SHEET 6

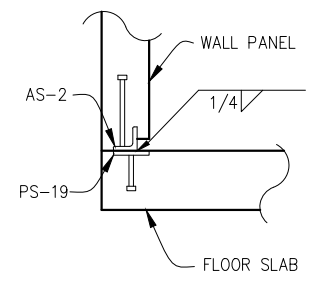
REV. 23



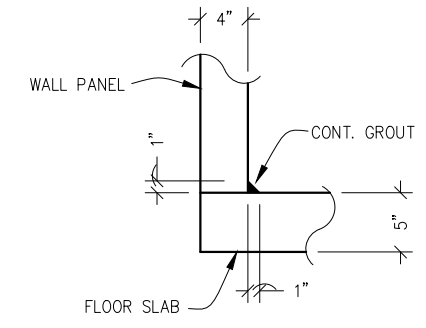
1 TYPICAL ROOF SLAB EDGE



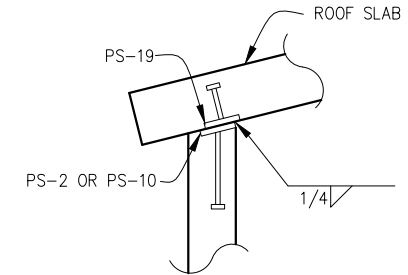
2 TYP. WALL TO WALL PANEL WELDED CONNECTION



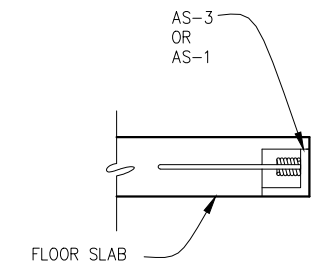
3 TYP. WALL TO FLOOR SLAB WELDED CONNECTION



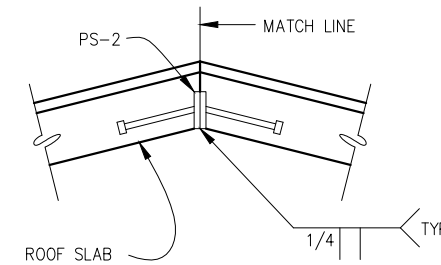
4 TYP. WALL TO FLOOR SLAB JOINT DETAIL



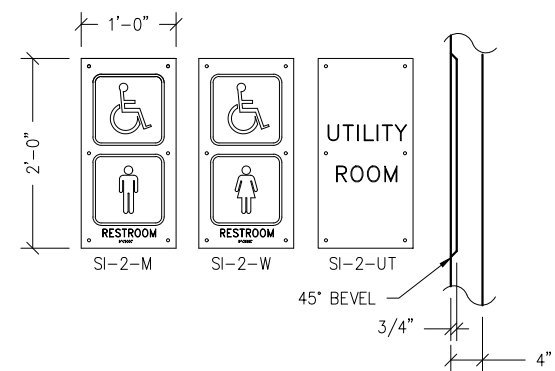
5 TYP. WALL TO ROOF SLAB WELDED CONNECTION



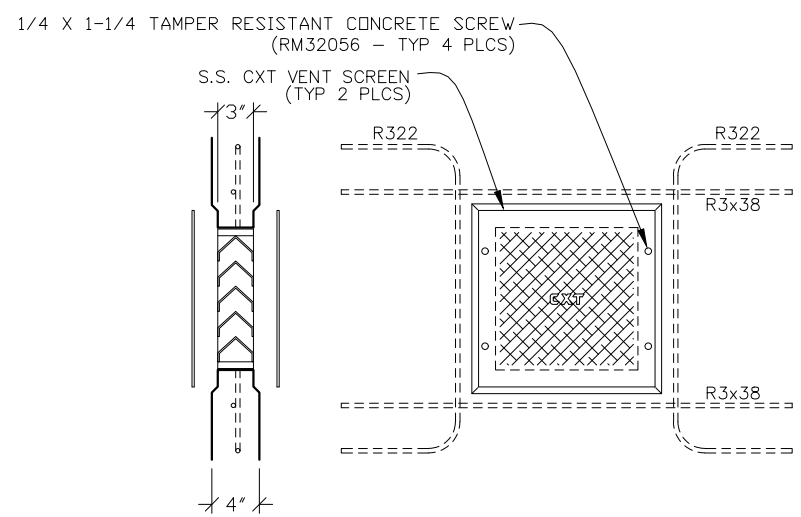
6 FLOOR LIFT PLATE DETAIL



7 ROOF PEAK WELDMENT DETAIL



8 SIGN SI-2 DETAIL



9 STANDARD FRAMELESS MS-2 WALL VENT DETAIL

CXT INCORPORATED  
CONTROLLED COPY  
IF THIS STATEMENT IS NOT PRINTED  
IN RED, DOCUMENT MAY NOT BE CURRENT  
ISSUED FOR PRODUCTION BY Robert D. Walker

3808 N. Sullivan Bldg. #7 Spokane, WA 99216  
**CXT**  
**Precast Products**  
901 N. Highway 77 Hillsboro, TX 76645

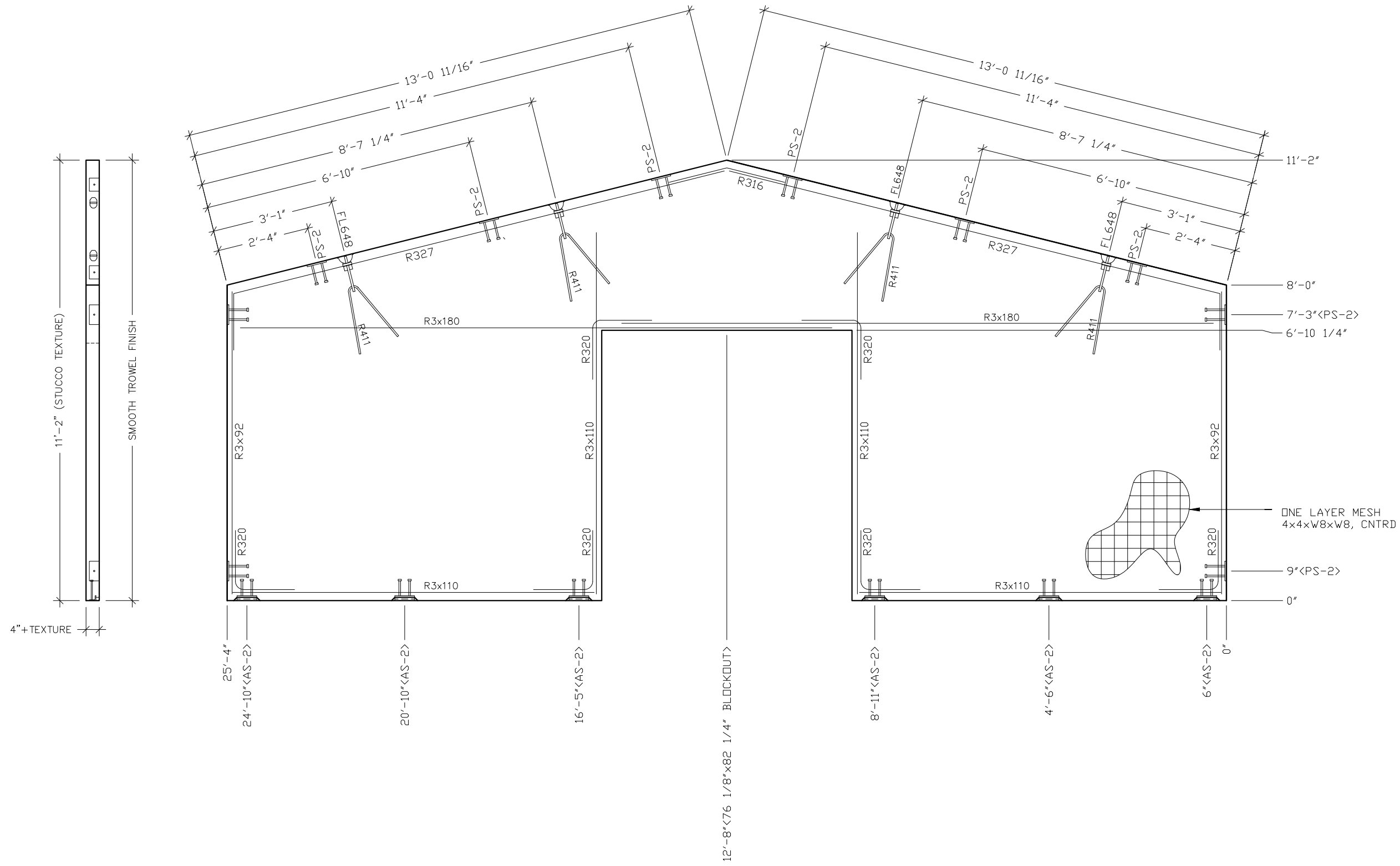
PROJECT TITLE  
**SANTIAGO**  
BUILDING NUMBER S-194

NOTICE  
The information contained herein is proprietary and the exclusive property of CXT Incorporated. The information may only be used by the original recipient for the purpose intended. Reproduction or distribution of this information is strictly prohibited without the prior written consent of CXT Incorporated. By allowing use of this information, CXT Incorporated grants no warranty, express or implied, including a warranty of merchantability or of fitness for a particular purpose.  
CXT Incorporated

REV.	DESCRIPTION	APPROVAL	DATE
SCALE	3/4"=1'-0"	DATE	1-20-17
DRAWN	MATT BRANCO	FILE NO.	S-194
CHECKED	RDW	PLOT	16

DETAILS

DWG NO.	S-07	SHEET	7	REV.	23
---------	------	-------	---	------	----



- NOTES:
1. WALL THICKNESS = 4"+TEXTURE
  2. EXCEPT R411, R327 & R316, REINFORCING BARS TO BE PLACED IN PAIRS ONE EACH FACE OF PANEL W/ 3/4" MIN. COVER
  3. ALL OTHER BARS TO BE CENTERED IN PANEL.

EMBEDDED MATERIALS	
ITEM	QTY
AS-2	6
PS-2	10
FL-648	4
R411	4
R3x92	4
R3x110	4
R3x180	4
R320	12
R327	2
R316	1
76 1/8" x 82 1/4" B0	1

CU. FT. CONC.	SQ. FT. W.W.F.
66.4 (2.46)	199

APPROXIMATE WEIGHT  
9,960

**CXT INCORPORATED  
CONTROLLED COPY**  
IF THIS STATEMENT IS NOT PRINTED  
IN RED, DOCUMENT MAY NOT BE CURRENT  
ISSUED FOR PRODUCTION BY Robert D. Walker

3808 N. Sullivan Bldg. #7 Spokane, WA 99216

901 N. Highway 77 Hillsboro, TX 76645

PROJECT TITLE  
**SANTIAGO**  
BUILDING NUMBER S-194

NOTICE

The information contained herein is proprietary and the exclusive property of CXT Incorporated. The information may only be used by the original recipient for the purpose intended. Reproduction or distribution of this information is strictly prohibited without the prior written consent of CXT Incorporated. By allowing use of this information, CXT Incorporated grants no warranty, express or implied, including a warranty of merchantability or of fitness for a particular purpose.

CXT Incorporated

REV.	DESCRIPTION	APPROVAL	DATE
SCALE	3/8"=1'-0"	DATE	1-20-17
DRAWN	MATT BRANCO	FILE NO.	S-194
CHECKED	RDW	PLOT	32

**WALL PANEL  
MARK W1**

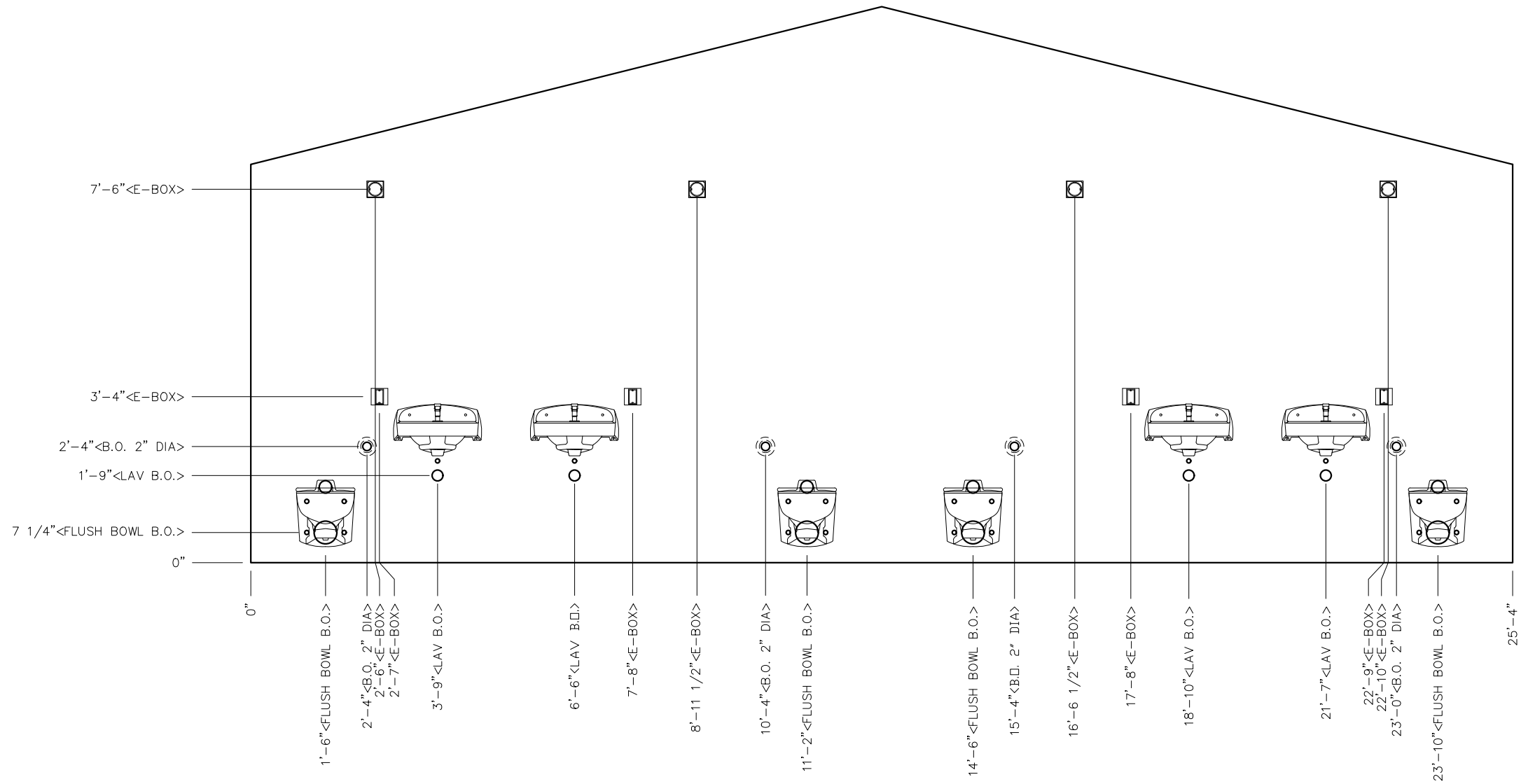
DWG NO. S-08 SHEET 8 REV. 23











EMBEDDED MATERIALS	
ITEM	QTY
FLUSH BOWL B.O.	4
B.O. 2" DIA	4
LAV B.O.	4
4x4 E-BOX	16
RECT MUD RING	4
ROUND MUD RING	4

CU. FT. CONC.	SQ. FT. W.W.F.
---------------	----------------

APPROXIMATE WEIGHT

**CXT INCORPORATED  
CONTROLLED COPY**  
IF THIS STATEMENT IS NOT PRINTED  
IN RED, DOCUMENT MAY NOT BE CURRENT  
ISSUED FOR PRODUCTION BY Robert D. Walker

3808 N. Sullivan Bldg. #7 Spokane, WA 99216



**CXT Precast Products**

901 N. Highway 77 Hillsboro, TX 76645

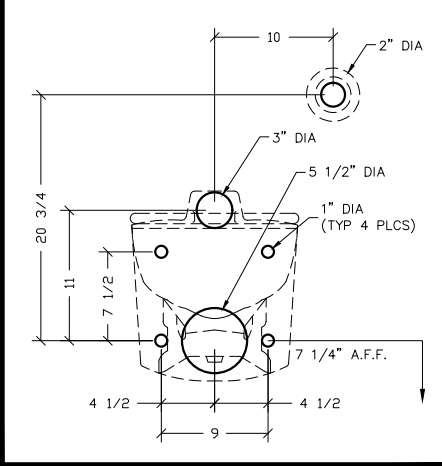
PROJECT TITLE  
**SANTIAGO**  
BUILDING NUMBER S-194

NOTICE  
The information contained herein is proprietary and the exclusive property of CXT Incorporated. The information may only be used by the original recipient for the purpose intended. Reproduction or distribution of this information is strictly prohibited without the prior written consent of CXT Incorporated. By allowing use of this information, CXT Incorporated grants no warranty, express or implied, including a warranty of merchantability or of fitness for a particular purpose.

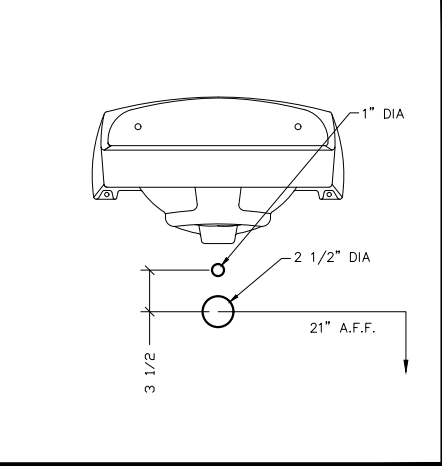
REV.	DESCRIPTION	APPROVAL	DATE
SCALE	3/8"=1'-0"	DATE	1-20-17
DRAWN	MATT BRANCO	FILE NO.	S-194
CHECKED	RDW	PLOT	32

WALL PANEL MARK W4 BLOCKOUTS		
DWG NO. S-12	SHEET 12	REV. 23

**BLOCKOUT DETAIL**  
**FLUSH VALVE BOWL DETAIL**  
AMERICAN STANDARD 2634.101



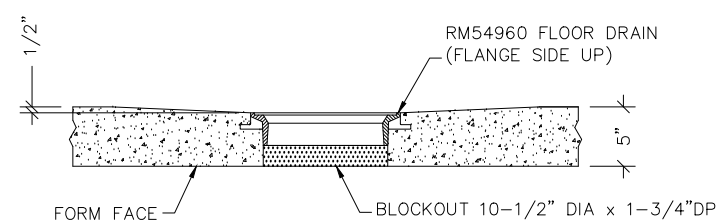
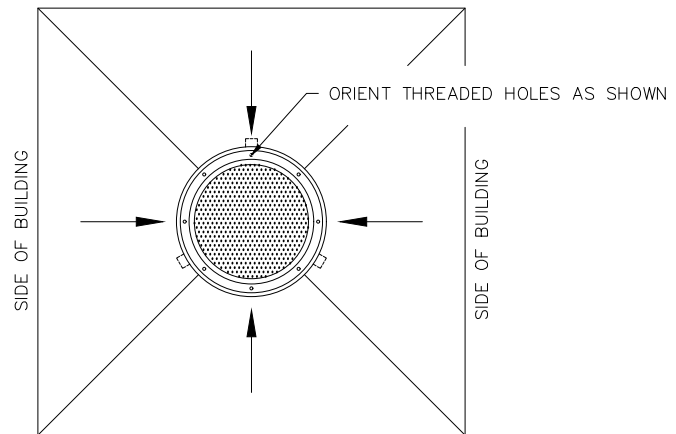
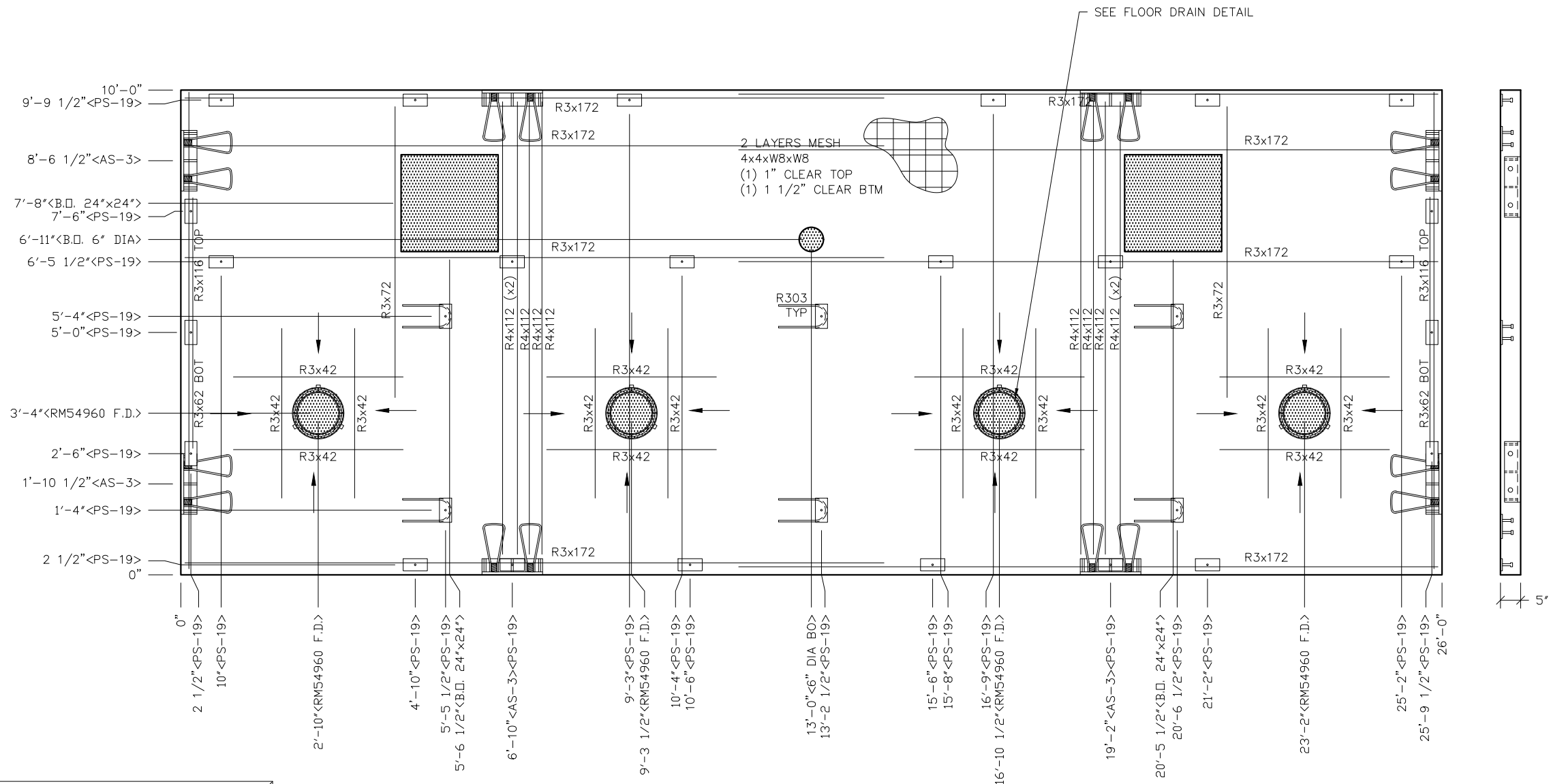
**BLOCKOUT DETAIL**  
**LAVATORY DETAIL**  
AMERICAN STANDARD 0356.421



NOTES:  
1. WALL THICKNESS = 4"







**FLOOR DRAIN BLOCKOUT DETAIL**

**NOTES:**

1. FLOOR THICKNESS = 5". SLOPE 1/4" TO FLOOR DRAIN BLOCKOUTS AS INDICATED BY ARROWS.
2. EXCEPT R3x62, R303, R3x116 & R4x112, REINFORCING BARS TO BE PLACED IN PAIRS ONE EACH FACE OF PANEL WITH 1" MIN. COVER
3. R4x112 TO BE PLACED IN BOTTOM OF PANEL WITH 1" COVER, U.N.O.
4. ALL OTHER BARS TO BE CENTERED IN PANEL OR PLACED AS NOTED

EMBEDDED MATERIALS	
ITEM	QTY
PS-19	25
AS-3	8
R3x72	4
R3x172	16
R4x112	10
R3x62	2
R3x42	32
RM54960 F.D.	4
6" DIA BO	1
B.O. 24"x24"	2
R303	6
R3x116	2

CU. FT. CONC.	SQ. FT. W.W.F.
104.0 (3.85)	520

APPROXIMATE WEIGHT  
15,600

**CXT INCORPORATED  
CONTROLLED COPY**  
IF THIS STATEMENT IS NOT PRINTED  
IN RED, DOCUMENT MAY NOT BE CURRENT  
ISSUED FOR PRODUCTION BY Robert D. Walker

3808 N. Sullivan Bldg. #7 Spokane, WA 99216



**Precast Products**

901 N. Highway 77 Hillsboro, TX 76645

PROJECT TITLE  
**SANTIAGO**  
BUILDING NUMBER S-194

NOTICE  
The information contained herein is proprietary and the exclusive property of CXT Incorporated. The information may only be used by the original recipient for the purpose intended. Reproduction or distribution of this information is strictly prohibited without the prior written consent of CXT Incorporated. By allowing use of this information, CXT Incorporated grants no warranty, express or implied, including a warranty of merchantability or of fitness for a particular purpose.  
CXT Incorporated

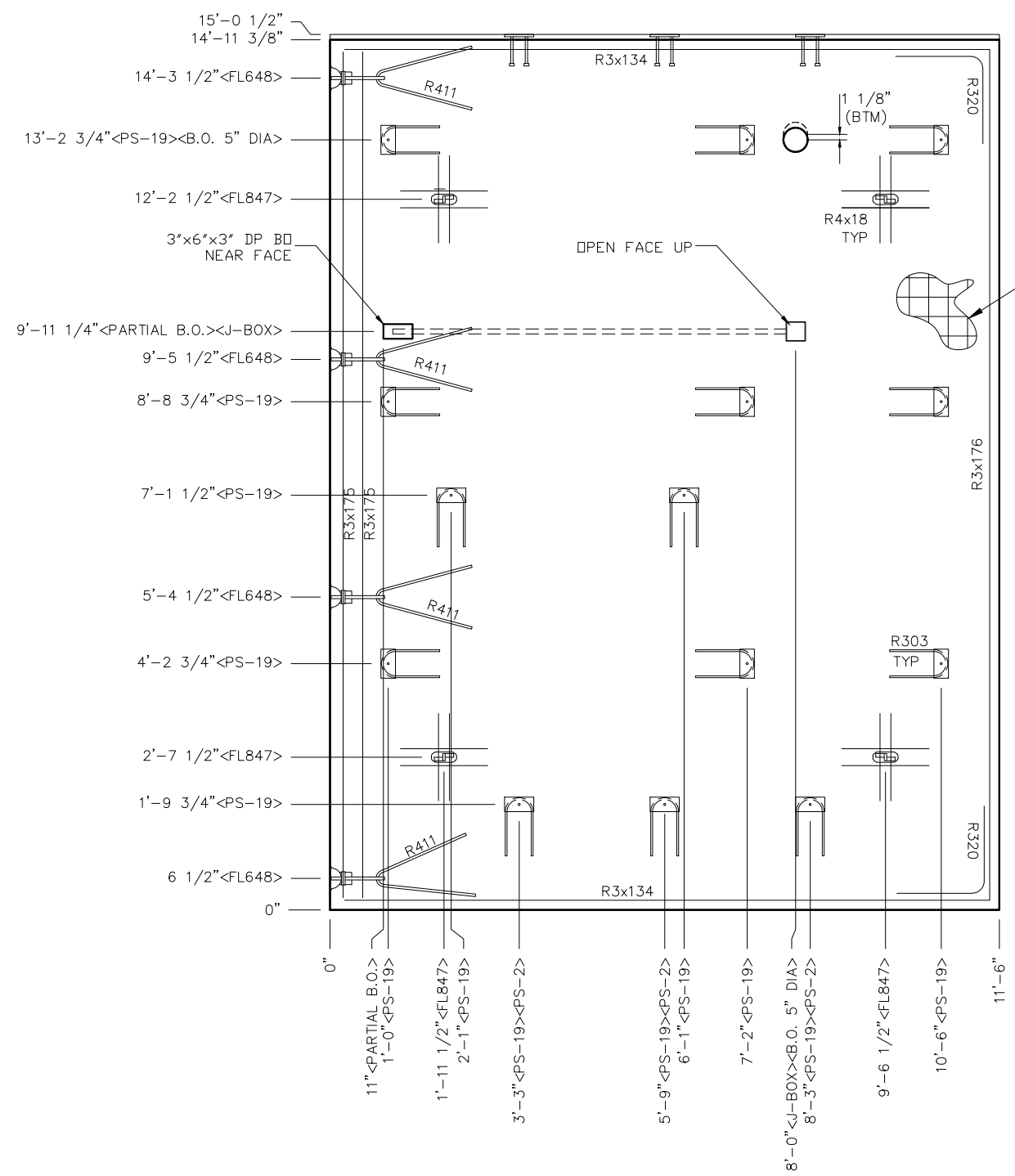
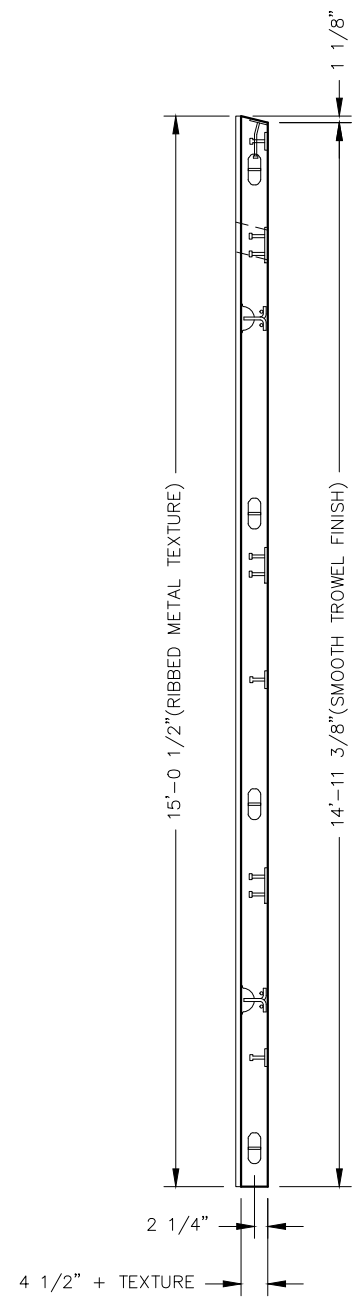
REV.	DESCRIPTION	APPROVAL	DATE
SCALE	3/8"=1'-0"	DATE	1-20-17
DRAWN	MATT BRANCO	FILE NO.	S-194
CHECKED	RDW	PLLOT	32

**FLOOR SLAB  
MARK F1**

DWG NO.	SHEET	REV.
S-15	15	23







TWO LAYERS MESH  
4x4xW8xW8  
(1) 3/4" CLEAR NEAR FACE  
(1) 1 1/4" CLEAR FAR FACE

- NOTES:
1. ROOF THICKNESS = 4 1/2" MIN + TEXTURE
  2. EXCEPT R303, R411, R3x175 & R4x18, BARS TO BE PLACED IN PAIRS, ONE EACH FACE OF PANEL W/ 1" CLEAR NEAR FACE & 1 1/2" CLEAR FORM FACE
  3. PLACE BARS R4x18 UP IN FORM W/ 1" COVER
  4. ALL OTHER BARS TO BE CENTERED IN PANEL

EMBEDDED MATERIALS	
ITEM	QTY
PS-19	14
PS-2	3
FL648	4
FL847	4
R411	4
R303	14
R320	4
R3x176	2
R3x134	4
R3x175	2
R4x18	16
BLOCKOUT 5" DIA	1
4x4 J-BOX	1
3"x6"x3" DP B.O.	1

CU. FT. CONC.	SQ. FT. W.W.F.
67.1 (2.49)	340

APPROXIMATE WEIGHT  
10,065

**CXT INCORPORATED  
CONTROLLED COPY**  
IF THIS STATEMENT IS NOT PRINTED  
IN RED, DOCUMENT MAY NOT BE CURRENT  
ISSUED FOR PRODUCTION BY Robert D. Walker

3808 N. Sullivan Bldg. #7 Spokane, WA 99216

901 N. Highway 77 Hillsboro, TX 76645

PROJECT TITLE  
**SANTIAGO**  
BUILDING NUMBER S-194

NOTICE  
The information contained herein is proprietary and the exclusive property of CXT Incorporated. The information may only be used by the original recipient for the purpose intended. Reproduction or distribution of this information is strictly prohibited without the prior written consent of CXT Incorporated. By allowing use of this information, CXT Incorporated grants no warranty, express or implied, including a warranty of merchantability or of fitness for a particular purpose.

CXT Incorporated

REV.	DESCRIPTION	APPROVAL	DATE
SCALE	3/8"=1'-0"	DATE	1-20-17
DRAWN	MATT BRANCO	FILE NO.	S-194
CHECKED	RDW	PLLOT	32

**ROOF SLAB  
MARK RI-L**

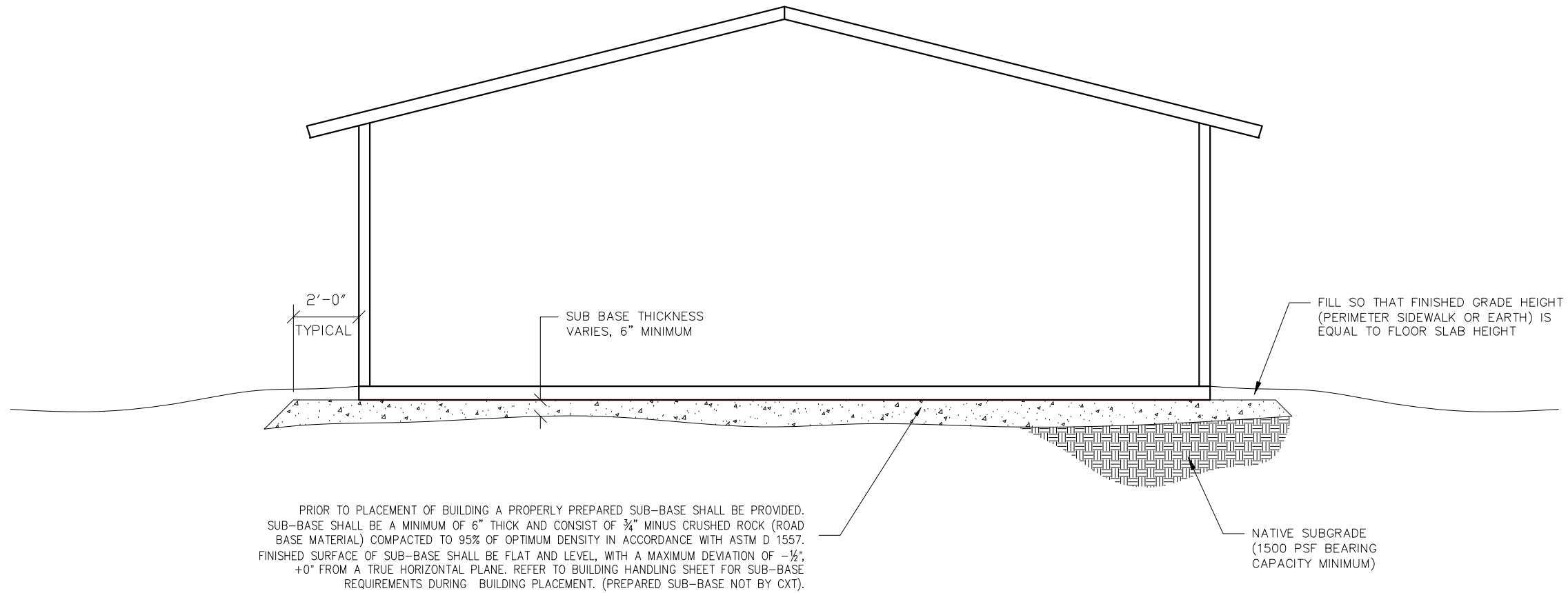
DWG NO.	SHEET	REV.
S-17	17	23

**NOTE:**

THIS FACTORY ASSEMBLED BUILDING AS CONSTRUCTED PROVIDES A RIGID BOX TYPE STRUCTURAL SYSTEM. VERTICAL LOADS ARE TRANSFERRED PRIMARILY THROUGH BEARING WALLS TO A PREPARED GRANULAR SUB-BASE WHICH DISSIPATES VERTICAL LOADS UNIFORMLY TO THE NATIVE SUBGRADE AND ALSO ACTS AS A FROST BARRIER. DUE TO THE INHERENT STIFFNESS OF THE BUILDING, IT WILL REMAIN SAFE AND STRUCTURALLY SOUND IN THE UNLIKELY EVENT OF FREEZING ACTION BELOW THE BUILDING.

LATERAL LOADS ARE TRANSFERRED TO THE GROUND THROUGH FRICTIONAL RESISTANCE WITHOUT SLIDING OR SHIFTING BETWEEN THE BUILDING FLOOR SLAB AND THE PREPARED SOIL AND GRAVEL SUB-BASE ON WHICH THE BUILDING RESTS. SEISMIC ANALYSES ARE BASED ON LOADS DETERMINED IN ACCORDANCE WITH THE 2012 INTERNATIONAL BUILDING CODE USING PARAMETERS WHICH MEET OR EXCEED THE CODE PRESCRIBED REQUIREMENTS FOR THIS INSTALLATION.

THIS BUILDING, AS DESIGNED, RESTING ON A PROPERLY PREPARED GRANULAR SUB-BASE WILL BE SAFE AND STRUCTURALLY SOUND FOR VERTICAL AND LATERAL LOADS AS DISCUSSED ABOVE. A FULL DEPTH FOUNDATION WALL AT THE BUILDING PERIMETER, TYPICAL FOR OTHER TYPES OF BUILDING CONSTRUCTION, IS NOT REQUIRED FOR THIS BUILDING.



**CXT INCORPORATED  
CONTROLLED COPY**  
IF THIS STATEMENT IS NOT PRINTED  
IN RED, DOCUMENT MAY NOT BE CURRENT  
ISSUED FOR PRODUCTION BY Robert D. Walker

3808 N. Sullivan Bldg. #7 Spokane, WA 99216



901 N. Highway 77 Hillsboro, TX 76645

PROJECT TITLE  
**SANTIAGO**  
BUILDING NUMBER S-194

NOTICE  
The information contained herein is proprietary and the exclusive property of CXT Incorporated. The information may only be used by the original recipient for the purpose intended. Reproduction or distribution of this information is strictly prohibited without the prior written consent of CXT Incorporated. By allowing use of this information, CXT Incorporated grants no warranty, express or implied, including a warranty of merchantability or of fitness for a particular purpose.

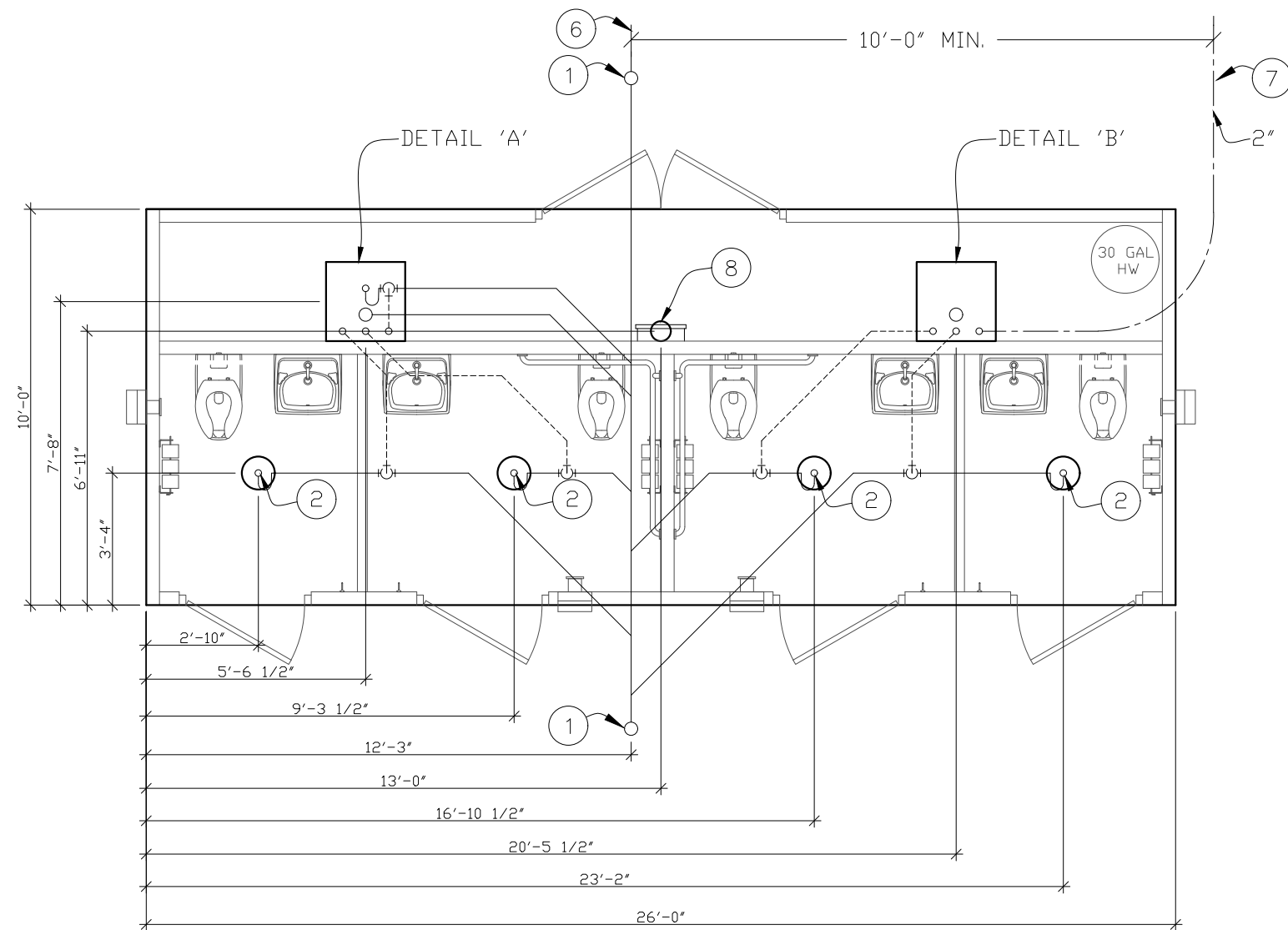
REV.	DESCRIPTION	APPROVAL	DATE

SCALE	1/4"=1'-0"	DATE	1-20-17
DRAWN	MATT BRANCO	FILE NO.	S-194
CHECKED	RDW	PLOT	48

**FOUNDATION DETAIL**

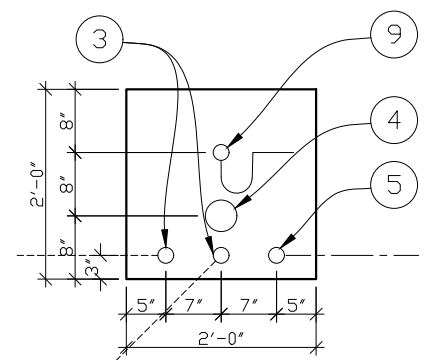
DWG NO.	S-18	SHEET	18	REV.	23
---------	------	-------	----	------	----

ALL PIPING INDICATED ON THIS SHEET IS NOT BY CXT

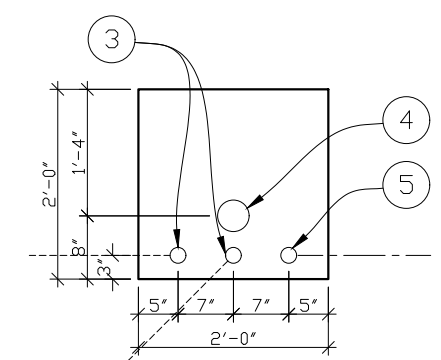


**BELOW FLOOR PIPING - KEY NOTES**

1. 4" CLEAN OUT TO GRADE.
2. 2" FLOOR DRAIN. FIELD INSTALLED TRAP PRIMER SYSTEM IF REQUIRED BY AUTHORITY HAVING JURISDICTION. (10" DIA BLOCKOUT)
3. 2" VENT PIPES EXTENDED 12" ABOVE FINISHED FLOOR LEVEL, PROVIDE TEST PLUG. (24"x24" BLOCKOUT)
4. 4" WASTE PIPE EXTENDED 12" ABOVE FINISHED FLOOR LEVEL, PROVIDE TEST PLUG. (24"x24" BLOCKOUT)
5. 2" TYPE K ANNEALED "SOFT" COPPER WATER SERVICE EXTENDED 12" ABOVE FINISHED FLOOR LEVEL, PROVIDE CAP AT END. (24"x24" BLOCKOUT)
6. 30" MIN. BURY, PROVIDE TRACER TAPE.
7. MIN. BURY PER LOCAL REQUIREMENTS TO PROTECT AGAINST FREEZING AND DAMAGE.
8. ELECTRICAL STUB UP, (6" DIA BLOCKOUT)
9. 2" FLOOR DRAIN. FIELD INSTALLED TRAP PRIMER SYSTEM IF REQUIRED BY AUTHORITY HAVING JURISDICTION. (24"x24" BLOCKOUT)



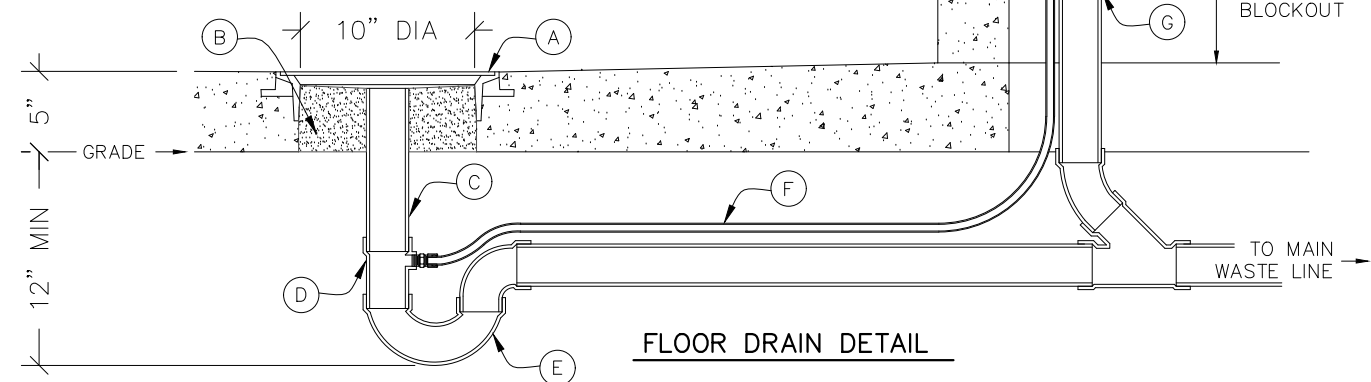
**24"x24" BLOCKOUT  
DETAIL "A"**



**24"x24" BLOCKOUT  
DETAIL "B"**

**FLOOR DRAIN BLOCKOUTS & BELOW FLOOR PIPING**

- A. CAST-IN DRAIN HOUSING (10" INSIDE DIM - PROVIDED BY CXT)
- B. FIELD INSTALLED GROUT, SLOPE TO DRAIN (CXT PROVIDED-INSTALLATION NOT BY CXT)
- C. 2" WASTE PIPE - STUB UP 12" ABOVE GRADE (NOT BY CXT)
- D. TAPPED P-TRAP ADAPTER (NOT BY CXT)
- E. P-TRAP ASSEMBLY (NOT BY CXT)
- F. 1/2" O.D. COPPER TRAP PRIMER LINE (NOT BY CXT)
- G. 2" FLOOR DRAIN VENT RISER - STUB UP 12" ABOVE GRADE (NOT BY CXT)
- H. TRAP PRIMER MANIFOLD (PRE-PLUMBED AND INSTALLED BY CXT)
- I. 1/2" SHUT OFF VALVE (PRE-PLUMBED AND INSTALLED BY CXT)



**FLOOR DRAIN DETAIL**

**PIPING LEGEND**

- BELOW FLOOR VENT PIPING  
SCH 40 PVC  
TYPE DWV
- BELOW FLOOR WASTE PIPING  
SCH 40 PVC  
TYPE DWV
- 2" TYPE "K" ANNEALED "SOFT" COPPER WATER SERVICE

**BELOW FLOOR PIPING - KEY NOTES**

**CXT INCORPORATED  
CONTROLLED COPY**  
IF THIS STATEMENT IS NOT PRINTED IN RED, DOCUMENT MAY NOT BE CURRENT ISSUED FOR PRODUCTION BY Robert D. Walker

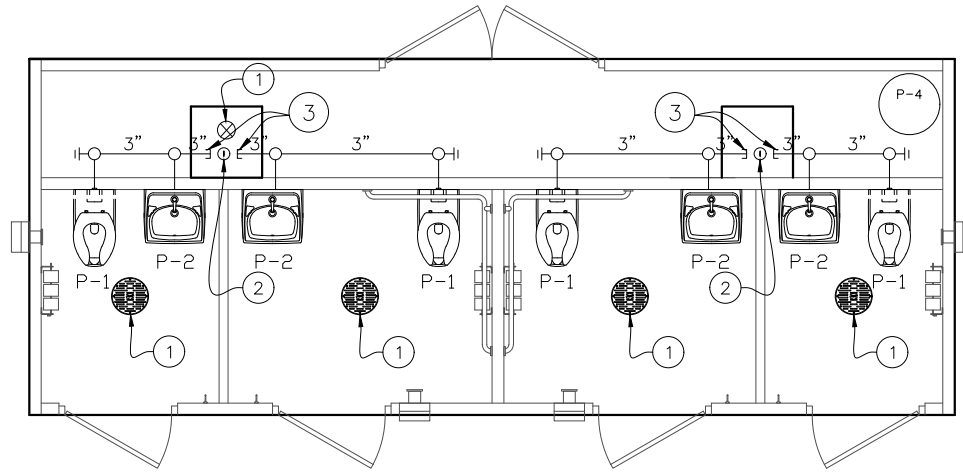
3808 N. Sullivan Bldg. #7 Spokane, WA 99216  
**CXT**  
**Precast Products**  
901 N. Highway 77 Hillsboro, TX 76645

PROJECT TITLE  
**SANTIAGO**  
BUILDING NUMBER S-194

NOTICE  
The information contained herein is proprietary and the exclusive property of CXT Incorporated. The information may only be used by the original recipient for the purpose intended. Reproduction or distribution of this information is strictly prohibited without the prior written consent of CXT Incorporated. By allowing use of this information, CXT Incorporated grants no warranty, express or implied, including a warranty of merchantability or of fitness for a particular purpose.  
CXT Incorporated

REV.	DESCRIPTION	APPROVAL	DATE
SCALE	1/4"=1'-0"	DATE	1-20-17
DRAWN	MATT BRANCO	FILE NO.	S-194
CHECKED	RDW	PLOT	48

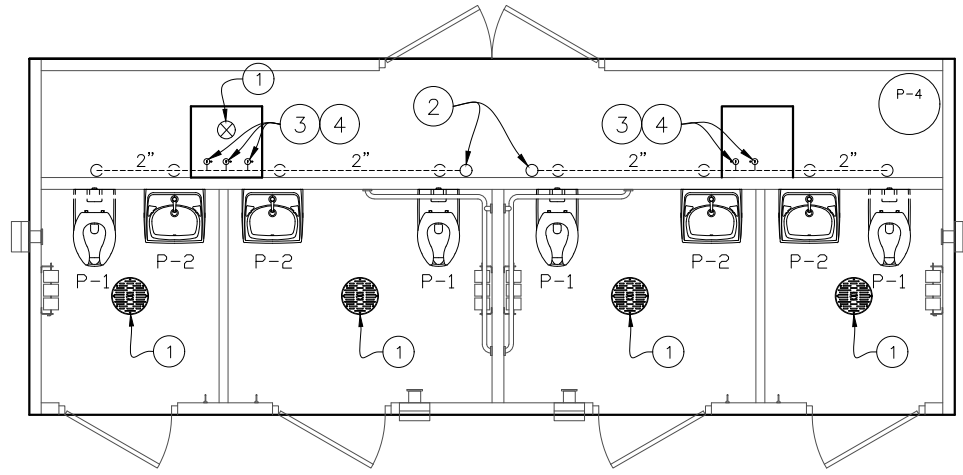
FLOOR DRAIN LOCATIONS & BELOW FLOOR PIPING		
DWG NO.	SHEET	REV.
S-19	19	23



**WASTE PIPING**

**WASTE PIPING - KEY NOTES**

1. 2" FLOOR DRAIN, FIELD INSTALLED (NOT BY CXT)
2. 4" WASTE THROUGH FLOOR, FIELD INSTALLED (NOT BY CXT)
3. PROVIDE TEST PLUG IN END OF WASTE PIPE. CONTINUATION OF PIPING IS FIELD INSTALLED & NOT BY CXT.



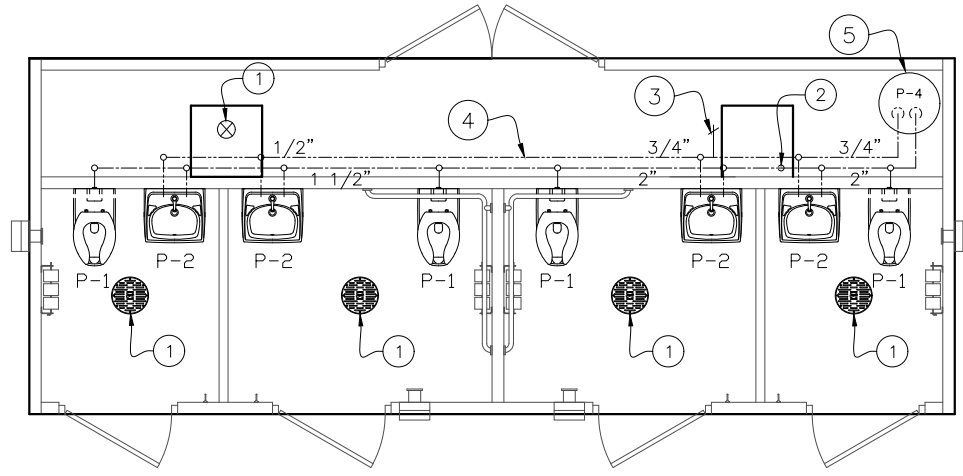
**VENT PIPING**

**VENT PIPING - KEY NOTES**

1. 2" FLOOR DRAIN, FIELD INSTALLED (NOT BY CXT)
2. 4" VENT THROUGH ROOF.
3. 2" VENT WITH TEST PLUG.
4. FIELD INSTALLED 2" VENT PIPING FROM FLOOR DRAINS. (NOT BY CXT)

**PIPING LEGEND**

- COLD WATER
- HOT WATER
- VENT PIPING  
SCH 40 PVC TYPE DWV
- WASTE PIPE:  
SCH 40 PVC, ASTM D2665, TYPE DWV
- FIELD PIPING (NOT BY CXT)



**WATER PIPING**

**WATER PIPING - KEY NOTES**

1. 2" FLOOR DRAIN, FIELD INSTALLED (NOT BY CXT)
2. FIELD INSTALLED 2" WATER SUPPLY WITH SHUT-OFF VALVE NEAR FLOOR. (NOT BY CXT)
3. 3/4" HOSE BIBB WITH VACUUM BREAKER AND WHEEL HANDLE.
4. WATER PIPING ALONG WALL, SEE WATER PIPING DIAGRAM ON S-22.
5. WATER HEATER WITH SIESMIC BRACING

CXT INCORPORATED  
CONTROLLED COPY  
IF THIS STATEMENT IS NOT PRINTED  
IN RED, DOCUMENT MAY NOT BE CURRENT  
ISSUED FOR PRODUCTION BY Robert D. Walker

3808 N. Sullivan Bldg. #7 Spokane, WA 99216



901 N. Highway 77 Hillsboro, TX 76645

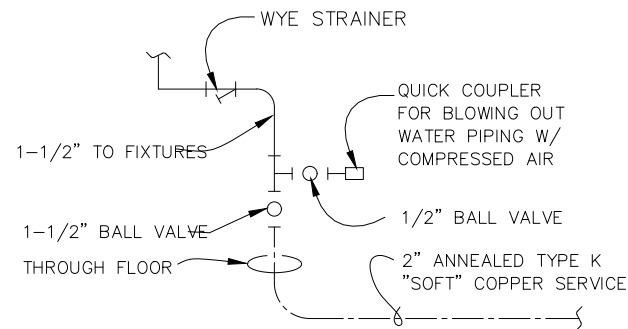
PROJECT TITLE  
**SANTIAGO**  
BUILDING NUMBER S-194

NOTICE  
The information contained herein is proprietary and the exclusive property of CXT Incorporated. The information may only be used by the original recipient for the purpose intended. Reproduction or distribution of this information is strictly prohibited without the prior written consent of CXT Incorporated. By allowing use of this information, CXT Incorporated grants no warranty, express or implied, including a warranty of merchantability or of fitness for a particular purpose.

REV.	DESCRIPTION	APPROVAL	DATE
SCALE	3/16"=1'-0"		1-20-17
DRAWN	MATT BRANCO	FILE NO.	S-194
CHECKED	RDW	PLLOT	64

**PLUMBING PLANS & NOTES**

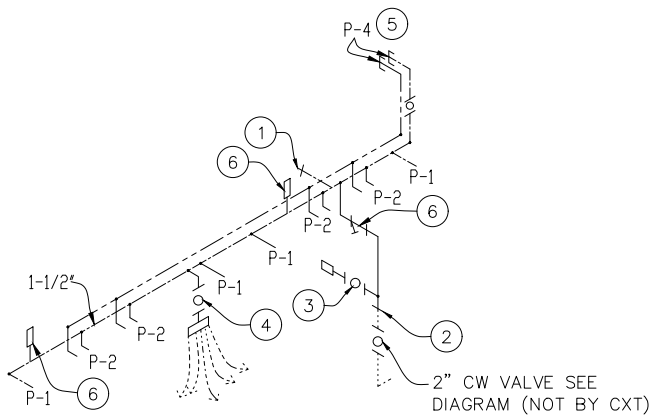
DWG NO.	SHEET	REV.
S-20	20	
	23	



NOTE:  
THIS PIPING IS FIELD  
INSTALLED & NOT BY CXT

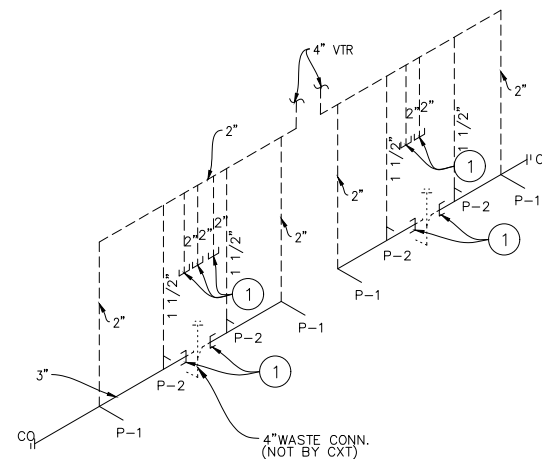
**WATER SERVICE DETAIL**

NTS



**WATER PIPING RISER DIAGRAM #1**

NTS



**WASTE & VENT RISER DIAGRAM**

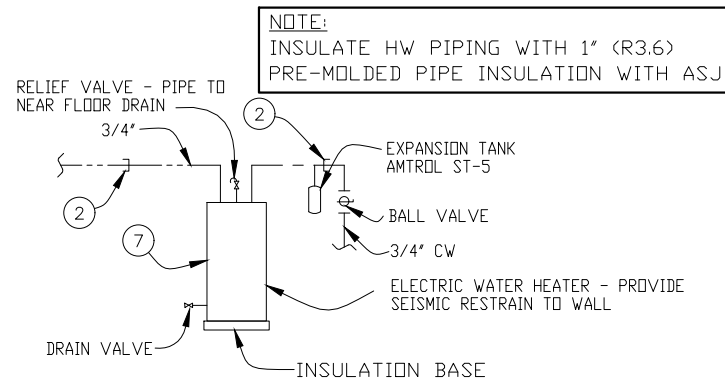
NTS

**WASTE & VENT RISER - KEY NOTES**

- TO THIS POINT BY CXT.

**WATER PIPING RISER - KEY NOTES**

- 3/4" HOSE BIBB WITH VACUUM BREAKER & WHEEL HANDLE.
- TO THIS POINT BY CXT.
- 1/2" AIR QUICK CONNECTION W/ BALL VALVE FOR BLOWING OUT WATER PIPING.
- 1/2" BALL VALVE & CAPPED CW LINE FOR FIELD INSTALLED TRAP FOR BLOWING OUT WATER PIPING. PRIMER VALVE IF REQUIRED BY JURISDICTION HAVING AUTHORITY
- 3/4" CW TO WATER HEATER, SEE HOT WATER PIPING RISER DIAGRAM.
- PROVIDE WYE STRAINER
- WATER HAMMER ARRESTOR SIOUX CHIEF HYDRA-RESTOR #654-C OR EQUAL.



NOTE:  
INSULATE HW PIPING WITH 1" (R3.6)  
PRE-MOLDED PIPE INSULATION WITH ASJ

SPECIAL NOTES:  
1. TOTAL FIXTURE COUNT (INCLUDES FLOOR DRAINS) : (15)  
2. FLOWING PRESSURE: 45 PSI MIN, 80 PSI MAX  
3. TOTAL DEVELOPED LENGTH = 35'-0"\*

\*APPROXIMATE DISTANCE FROM THE SOURCE TO THE FARTHEST FIXTURE

**PLUMBING FIXTURE SCHEDULE**

SYM	DESCRIPTION	MANUFACTURER	MODEL #	FLUSH VALVE/FAUCET	TRAP	ACTUATOR	DRAIN	HW	CW	WASTE	VENT	NOTES
P-1	WATER CLOSET	AMERICAN STANDARD	2634.101 (W.C.) 5905.100 (W.C. SEAT)	SLOAN "ROYAL" #952-1.6 L-3 W=4"	-	SLOAN HY33A	-	-	1 1/4"	3"	2"	1,3
P-2	LAVATORY	AMERICAN STANDARD	0356.421 (LAV.)	SYMMONS S-71	OFFSET 1.25"x17GA.CP		CHROME STRAINER	1/2"	1/2"	1-1/2"	1-1/2"	2,4,5
P-4	WATER HEATER	AD SMITH	DEN-30 4500 240V	ST-5 EXPANSION TANK				3/4"	3/4"			7
P-5												
P-6												
P-7												
P-8	FLOOR DRAIN	TRAVIS SIOUX CHIEF	RM54960 (RESTRROOM-QTY 4) 840-2A (CHASE-QTY 1)	- -	- -	- -	- -	- -	- -	2" 2"	2" 2"	6

- NOTES:
- OFFSET FLUSH VALVE TAILPIECE PER ADA, RIGHT OR LEFT HAND, AS REQUIRED. PROVIDE FLUSH VALVE FOR 4" WALL THICKNESS.
  - HAMMER ARRESTOR JRS520-T-C OR EQUAL ASSE 1010, FLOOR DRAIN S2005A025NBLP, TRAP PRIMER- MIFAB MM500, DISTR UNIT- MIFAB 8 ASSE 1018 OR 1044
  - MOUNT RIM AT 17" ABOVE FLOOR.
  - 1-1/4" GRID DRAIN W/TLPC PF155A,1/2X15 COMP ANG LAV BSCR1915AC, 1.25"OD BX ESC PFE40
  - 3 PC COVER SET PF202WH, LEONARD MIX VL 203006
  - TRAP PRIMER- MIFAB MM500, DISTR UNIT- MIFAB 8 ASSE 1018 OR 1044
  - 30 GALLON, 4500 WATTS, 220/240 VOLTS, ONE PHASE.

**PIPING LEGEND**

- COLD WATER
- HOT WATER
- VENT PIPING  
SCH 40 PVC TYPE DWV
- WASTE PIPE:  
SCH 40 PVC, ASTM D2665, TYPE DWV
- ..... FIELD PIPING (NOT BY CXT)

**CXT INCORPORATED  
CONTROLLED COPY**  
IF THIS STATEMENT IS NOT PRINTED  
IN RED, DOCUMENT MAY NOT BE CURRENT  
ISSUED FOR PRODUCTION BY Robert D. Walker

3808 N. Sullivan Bldg. #7 Spokane, WA 99216



**Precast Products**

901 N. Highway 77 Hillsboro, TX 76645

PROJECT TITLE  
**SANTIAGO**  
BUILDING NUMBER S-194

NOTICE  
The information contained herein is proprietary and the exclusive property of CXT Incorporated. The information may only be used by the original recipient for the purpose intended. Reproduction or distribution of this information is strictly prohibited without the prior written consent of CXT Incorporated. By allowing use of this information, CXT Incorporated grants no warranty, express or implied, including a warranty of merchantability or of fitness for a particular purpose.

REV.	DESCRIPTION	APPROVAL	DATE
SCALE	3/16"=1'-0"	DATE	1-20-17
DRAWN	MATT BRANCO	FILE NO.	S-194
CHECKED	RDW	PLOT	64

PLUMBING SCHEDULE & DIAGRAMS		
DWG NO.	SHEET	REV.
S-21	21	23

**GENERAL ELECTRICAL NOTES**

1. RECESSED JUNCTION BOXES FOR SINGLE DEVICES SHALL HAVE SINGLE GANG MUD RINGS CAST IN CONCRETE WALLS.
2. ALL RECEPTACLES SHALL BE GFCI PROTECTED BY CIRCUIT BREAKERS, OR BY OTHER GFCI RECEPTACLES.
3. ALL CONDUIT SHALL BE SIZED PER NEC (SEE REF TABLE). EXPOSED CONDUIT SHALL BE EMT/FMC, RECESSED SHALL BE PVC. J-BOXES TO BE SIZED PER NEC FOR BOX FILLS.

WIRE SIZE	1/2" EMT	3/4" EMT
14	TYPE THHN 12 MAX	TYPE THHN 22 MAX
12	TYPE THHN 9 MAX	TYPE THHN 16 MAX
10	TYPE THHN 5 MAX	TYPE THHN 10 MAX

WIRE SIZE	1/2" FMC	3/4" FMC
14	TYPE THHN 13 MAX	TYPE THHN 22 MAX
12	TYPE THHN 9 MAX	TYPE THHN 16 MAX
10	TYPE THHN 6 MAX	TYPE THHN 10 MAX

WIRE SIZE	1/2" ENT	3/4" ENT
14	TYPE THHN 10 MAX	TYPE THHN 18 MAX
12	TYPE THHN 7 MAX	TYPE THHN 13 MAX
10	TYPE THHN 4 MAX	TYPE THHN 8 MAX

4. INSTALL ALL WIRING IN CONDUIT OR RELATED ENCLOSURES.
5. ALL ELECTRICAL INSTALLATIONS SHALL MEET THE 2014 VERSION OF THE NATIONAL ELECTRICAL CODE.
6. MINIMUM WIRE SIZE SHALL BE #12 AWG COPPER, THHN INSULATION UNLESS NOTED OTHERWISE.
7. ROUTE ALL CONDUITS IN UTILITY ROOM AT CEILING OR FACE OF WALLS.
8. ELECTRICAL DRAWINGS ARE DIAGRAMMATIC IN NATURE & MAY NOT SHOW EXACT LOCATIONS OF DEVICES. REFER TO WALL PANEL & OTHER DRAWINGS FOR EXACT LOCATIONS OF E-BOXES, ETC.

**KEY NOTES THIS SHEET**

- ① WIRE FANS THROUGH SPEED SWITCH LOCATED BY PANEL.
- ② EXTERIOR LIGHT FIXTURES TO BE CONTROLLED BY INTEGRAL PHOTOCELL. ROUTE WIRING IN RESTROOM IN CONCEALED CONDUIT.
- ③ RESTROOM LIGHTS AND EXHAUST FANS ARE TO OPERATED BY OCCUPANCY SENSOR.
- ④ CHASE LIGHT OPERATED BY OCCUPANCY SENSOR.

CIRCUIT		LOAD	
NO.	DESCRIPTION	OCP	TYPE (VA) (A)
1	RECEPTACLES RR #1 & RR #2	1P/20A	R 360 3
3	RECEPTACLES RR #3 & RR #4	1P/20A	R 360 3
5	CHASE RECEPTACLE	1P/20A	R 180 1.5
7	WATER HEATER	2P/30A	C 2250 20.5
9			C 2250 20.5
11			
13			
15			
17			
19			
21			
23			
25			
27			
29			
31			

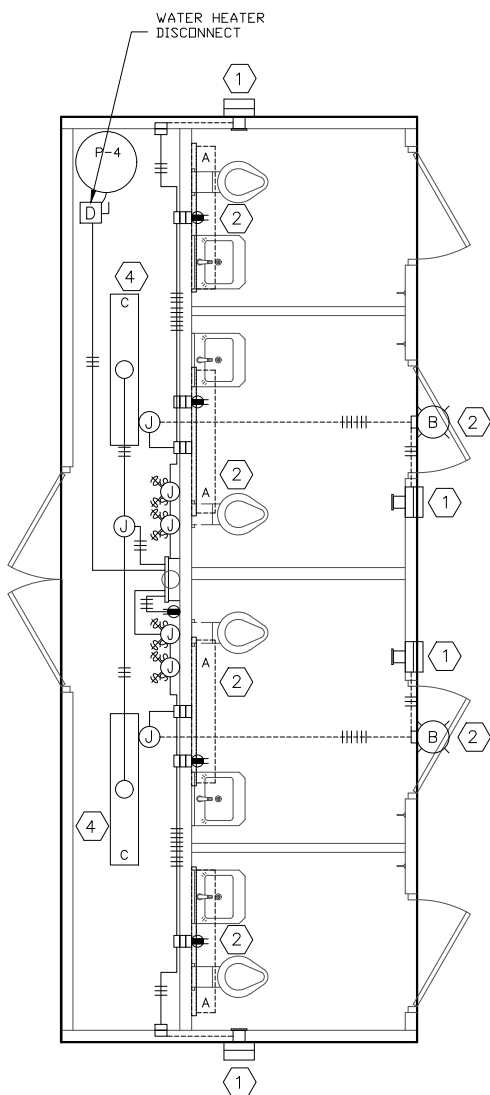
  

CIRCUIT		LOAD	
NO.	DESCRIPTION	OCP	TYPE (VA) (A)
2	RR 1 & 2 LIGHTS & EXHAUST FANS	1P/20A	L 256 2.1
4	RR 3 & 4 LIGHTS & EXHAUST FANS	1P/20A	N 256 2.1
6	EXTERIOR LIGHTS	1P/20A	C 28 0.3
8	CHASE LIGHTS	1P/20A	N 56 0.5
10			
12			
14			
16			
18			
20			
22			
24			
26			
28			
30			
32			

LOAD	CONNECTED	CALCULATED
(C)ONTINUOUS	4,528 X 1.25	5,660 VA
(R)EC (1ST 10KVA)	900 X 1.00	900 VA
(N)ON-CONTINUOUS	312 X 1.00	312 VA
(L)ARGEST MOTOR	256 X 1.25	320 VA
<b>TOTAL LOAD</b>	<b>5,996 VA</b>	<b>7,192 VA</b> 30.0 AMPS

NOTE: MAXIMUM ALLOWABLE AIC IS 22K AMPS, PANEL MODIFICATIONS WILL BE REQUIRED (NOT BY CXT) IF TRANSFORMER CAPACITY EXCEEDS 175 KVA.



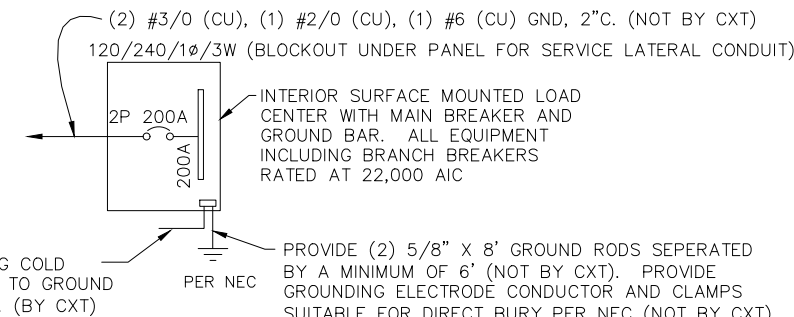
EXHAUST FAN SCHEDULE							
SYM	MFR	MODEL #	CFM	SONES	VOLTS	AMPS	NTS.
EF-1	FANTECH	RVF-4XL	180	6.0	120	0.84	-

LIGHTING FIXTURE SCHEDULE			
FIXTURE NUMBER	VOLTAGE	WATTS	DESCRIPTION
A	120	28	LUMINAIRE VPF84 INTERIOR LIGHT FIXTURE, VPF8-4-28W HP-4000K-120-CP-WHT-WET-DCC-TX/SD SURFACE MOUNTED, LED LAMP 4 FT, WRAP AROUND LENS, LOW TEMPERATURE DRIVER, BUILT IN OCCUPANCY SENSOR ACTIVATED W/ ADDITIONAL OCCUPANCY SENSOR FOR FAN CONTROL
B	120	14	SWOOP 610 LED EXTERIOR LIGHT, YWP610-14W HP-3500K-120-CP-BRZ-CAB/PC EXTERIOR, VANDAL RESISTANT, WALL MOUNTED, 14 WATT, CLEAR PRISMATIC LENS, BUILT IN PHOTOELECTRIC CONTROL
C	120	28	LUMINAIRE VPF84 INTERIOR LIGHT FIXTURE, VPF8-4-28W HP-4000K-120-CP-WHT-WET-DCC-TX/SD SURFACE MOUNTED, LED LAMP 4 FT, WRAP AROUND LENS, LOW TEMPERATURE DRIVER, BUILT IN OCCUPANCY SENSOR ACTIVATED

NOTE: THE SOURCE OF EFFICACY OF EXTERIOR LIGHTING IS TO BE A MINIMUM OF 45 LUMENS PER WATT.

**SYMBOLS LEGEND**

- |     |  |     |   |   |  |
|-----|--|-----|---|---|--|
| ⑥   | NOTE REFERENCE   | ○   | LOAD CENTER "A"                             | ⊠ | PANEL OR DEVICE AS NOTED                     |
| ⊕   | COMBINATION SWITCH AND DUPLEX RECEPTACLE (GFI)   | ○ X | WALL MOUNTED FLUORESCENT FIXTURE            | ⊞ | THERMOSTAT                                   |
| ⊕   | DUPLEX RECEPTACLE ( x = BREAKER # IF SHOWN)  | ○ X | CEILING MOUNTED FLUORESCENT FIXTURE         | ⊞ | HEATER                                       |
| ⊕   | GFI DUPLEX RECEPTACLE ( x = BREAKER # IF SHOWN)  | ⊗   | EXTERIOR LIGHT FIXTURE                      | ⊞ | CEILING FAN                                  |
| ⊕   | ON / OFF SWITCH (M-MOTOR RATED)  | ⊞   | HAND DRYER                                  | ⊞ | EXIT SENSOR                                  |
| ⊕   | SPEED SWITCH   | ⊞   | WATER HEATER                                | ⊞ | MAGNETIC DOOR LOCK                           |
| ⊕   | SURFACE MOUNTED CONDUIT, CROSSHATCH OR SLASH AND NUMBER DENOTES WIRES, (ALL #12AWG UNO, UNLESS NOTED) ONE WIRE TO BE GROUNDING (GREEN) | ⊞   | OCCUPANCY SENSOR WITH RECESSED JUNCTION BOX | ⊞ | EXIT CONTROL SWITCH                          |
| ⊕   | 12   | ⊞   | SAFETY DISCONNECT                           | ⊞ | SURFACE JUNCTION BOX                         |
| --- | CONCEALED CONDUIT  | ⊞   |   | ⊞ | RECESSED OR SURFACE FOUR SQUARE JUNCTION BOX |
|     |  | ⊞   |   | ⊞ | SPECIAL PURPOSE OUTLET AS NOTED              |



**ONE-LINE POWER DIAGRAM**

NTS

**CXT INCORPORATED CONTROLLED COPY**  
IF THIS STATEMENT IS NOT PRINTED IN RED, DOCUMENT MAY NOT BE CURRENT ISSUED FOR PRODUCTION BY Robert D. Walker

3808 N. Sullivan Bldg. #7 Spokane, WA 99216



**Precast Products**

901 N. Highway 77 Hillsboro, TX 76645

PROJECT TITLE  
**SANTIAGO**  
BUILDING NUMBER S-194

NOTICE  
The information contained herein is proprietary and the exclusive property of CXT Incorporated. The information may only be used by the original recipient for the purpose intended. Reproduction or distribution of this information is strictly prohibited without the prior written consent of CXT Incorporated. By allowing use of this information, CXT Incorporated grants no warranty, express or implied, including a warranty of merchantability or of fitness for a particular purpose.

REV.	DESCRIPTION	APPROVAL	DATE
SCALE	3/16"=1'-0"	DATE	1-20-17
DRAWN	MATT BRANCO	FILE NO.	S-194
CHECKED	RDW	PLOT	64

ELECTRICAL PLAN, DETAIL & SCHEDULES		
DWG NO.	SHEET	REV.
S-22	22	23



