

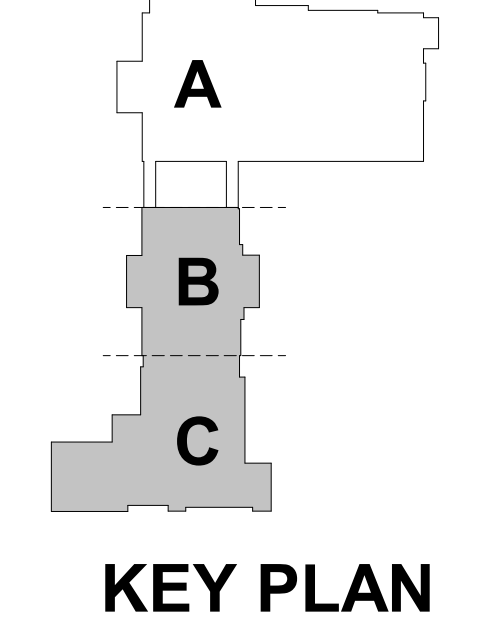
BUILDING DATA		
<b>GENERAL BUILDING DATA:</b>	<b>FIRE RATING CRITERIA (IBC TABLE 601)</b>	<b>RATING</b>
NEW CONSTRUCTION	PRIMARY STRUCTURAL FRAME:	0 HOUR
FULLY SPRINKLERED BUILDING	BEARING WALLS:	0 HOUR
	EXTERIOR	0 HOUR
	INTERIOR	0 HOUR
<b>OCCUPANCY CLASSIFICATION (LSC / IBC):</b>	NONBEARING WALLS & PARTITIONS:	TABLE 602
BUSINESS (NFPA CHPT. 39) GROUP B (IBC CHPT. 6) W/	EXTERIOR	0 HOUR
ASSEMBLY (NFPA CHPT. 3) GROUP A-3 (IBC CHPT. 6)	INTERIOR	0 HOUR
<b>TYPE OF CONSTRUCTION (IBC):</b>	FLOOR CONSTRUCTION AND ASSOCIATED SECONDARY MEMBERS:	0 HOUR
TYPE II, UNPROTECTED, SPRINKLERED (OFFICE BUILDING)	ROOF CONSTRUCTION AND ASSOCIATED SECONDARY MEMBERS:	0 HOUR
<b>HEIGHT AND AREA LIMITS (IBC):</b>	<b>PARTY AND FIRE WALLS:</b>	3 HOUR
ALLOWABLE HEIGHT, PER TABLE 504.3	<b>VERTICAL SHAFT ENCLOSURES:</b>	1 HOUR
MAXIMUM NUMBER OF STORIES ABOVE GRADE PLANE, PER TABLE 504.4	ELEVATOR SHAFTS & ENCLOSURES	1 HOUR
-FOR OCCUPANCY 'A', 4 STORIES		
ALLOWABLE FLOOR AREA, PER TABLE 506.2		
-FOR OCCUPANCY 'A': 38,000 SF		
-FOR OCCUPANCY 'A': 69,000 SF		
-FOR OCCUPANCY 'S1': 52,000 SF		
<b>BUILDING AREAS (IBC):</b>		
(NFPA):		
LEVEL 01 = 18,965 GSF		
LEVEL 02 = 25,281 GSF		
LEVEL 03 = 10,928 GSF		
<b>TOTAL = 55,111 GSF</b>		

INTERIOR WALL AND CEILING FINISH REQUIREMENTS (IBC TABLE 803.9):		
EXIT ENCLOSURES AND EXIT PASSAGEWAYS	B	
CORRIDORS	C	
ROOMS AND ENCLOSED SPACES	C	

APPLICABLE CODES		
2018 INTERNATIONAL BUILDING CODE WITH GEORGIA AMENDMENTS (2020)(2022)(2024)	2015 INTERNATIONAL ENERGY CONSERVATION CODE WITH GEORGIA SUPPLEMENTS AND AMENDMENTS (2020)(2022) (2023)	
2018 INTERNATIONAL FIRE CODE (CONTACT STATE FIRE MARSHAL)	2018 NFPA 101, LIFE SAFETY CODE WITH GEORGIA CURRENT AMENDMENTS	
2018 INTERNATIONAL PLUMBING CODE WITH GEORGIA AMENDMENTS (2020)(2022)(2023) (2024)	2019 NFPA 72, NATIONAL FIRE ALARM & SIGNALING CODE WITH GEORGIA CURRENT AMENDMENTS	
2018 INTERNATIONAL MECHANICAL CODE WITH GEORGIA AMENDMENTS (2020)(2024)	2019 NFPA 13, STANDARD FOR THE INSTALLATION OF SPRINKLER SYSTEMS WITH GEORGIA CURRENT AMENDMENTS	
2018 INTERNATIONAL FUEL GAS CODE WITH GEORGIA AMENDMENTS (2020)(2022)	2010 ADA STANDARDS, PER RULES AND REGULATIONS OF THE SAFETY FIRE COMMISSIONER 120-3-20A	
2017 NATIONAL ELECTRICAL CODE WITH GEORGIA AMENDMENTS (2021)	RULES AND REGULATIONS OF SAFETY FIRE COMMISSIONER FOR STATE MINIMUM FIRE SAFETY STANDARDS, CHAPTER 120-3-3 JANUARY 1, 2020 (GEORGIA SAFETY FIRE LAW)	
	GEORGIA STATE HANDICAPPED ACCESSIBILITY LAW 120-3-20-A/ 2010 ADA STANDARDS FOR ACCESSIBLE DESIGN	

LIFE SAFETY PLAN LEGEND	
<b>SEPARATION PER IBC CHAPTER 5</b>	<b>OCCUPANCY PER LSC 7.3.1.2 PER GEORGIA AMENDMENTS TO THE IBC</b>
--- 2-HOUR RATED PARTITION	AREA SF / OCCUPANT LOAD FACTOR = OCCUPANCY COUNT (REFER TO PLANS FOR ROOM OCCUPANCY CALCULATIONS)
--- 1-HOUR RATED PARTITION	ACCESSORY STORAGE AREAS, MECHANICAL, ELECTRICAL ROOMS = 500 GSF/PERSON
●●●● SMOKE PARTITION	ASSEMBLY (CONCENTRATED) = 7 NSF/PERSON
--- NON-RATED PARTITION	ASSEMBLY (UNCONCENTRATED) = 15 NSF/PERSON
<b>EXTINGUISHER LOCATION PER NFPA 10</b>	BENCH-TYPE SEATING 1 PERSON/18 LINEAR INCHES
■ FIRE EXTINGUISHER IN RECESSED CABINET	BUSINESS AREAS = 100 GSF/PERSON
● FE BRACKET MOUNTED FIRE EXTINGUISHER	
<b>CAPACITY PER LSC 7.3.3.1</b>	<b>ALLOWABLE DISTANCE PER LSC 12.2.6</b>
STAIRS = 0.3*/PERSON	TRAVEL DISTANCE LIMIT:
DOORS = 0.2*/PERSON	ASSEMBLY - MAX. 250 FT.; SPRINKLERED
32"W DOOR = 30" CLR. = 150 CAPACITY	BUSINESS - MAX. 300 FT.; SPRINKLERED
36"W DOOR = 34" CLR. = 170 CAPACITY	
42"W DOOR = 40" CLR. = 200 CAPACITY	<b>COMMON PATH LIMIT:</b>
48"W DOOR = 46" CLR. = 230 CAPACITY	ASSEMBLY - MAX. 20 FT (>50 PERSONS); MAX. 75 FT (<50 PERSONS);
68"W DOOR = 64" CLR. = 320 CAPACITY	SPRINKLERED
72"W DOOR = 68" CLR. = 340 CAPACITY	BUSINESS - MAX. 100 FT.; SPRINKLERED
96"W DOOR = 92" CLR. = 460 CAPACITY	<b>DEAD END LIMIT:</b>
	ASSEMBLY - MAX. 20 FT.; SPRINKLERED
	BUSINESS - MAX. 50 FT.; SPRINKLERED
<b>DOORS PER IBC 715.4</b>	<b>NUMBER OF EXITS PER IBC 1015 &amp; LSC 7.4.1.2</b>
<b>EXIT SIGNS PER IBC 1011</b>	⓪ ACTUAL EGRESS COUNT ⓪ EGRESS CAPACITY OF STAIR
EXIT SIGNAGE (SHADING INDICATES FACE OF SIGN; ARROW SHOWN INDICATES DIRECTION)	⓪ EGRESS CAPACITY OF EXIT
	PATH OF EGRESS WITHIN BUILDING →→→→→
	TRAVEL DISTANCE & COMMON PATH (SEE NOTES ON PLANS)

OCCUPANCY LOAD	
ASSEMBLY (UNCONCENTRATED)	/ 15SF =
ASSEMBLY (BENCH-TYPE SEATING)	# SEAT =
BUSINESS	/ 150SF =
STORAGE	/ 500SF =
TOTAL OCCUPANTS =	



**ROCKDALE COUNTY JUDICIAL AND ADMINISTRATIVE COMPLEX**  
**PHASE 2 EXISTING COURTHOUSE RENOVATION SCHEMATIC DESIGN**  
 922 COURT STREET  
 CONYERS, GEORGIA 30012

PRINT RECORD		
No.	DATE	DESCRIPTION
02/09/2024	02/09/2024	SCHEMATIC DESIGN SUBMITTAL

Drawn By: \_\_\_\_\_ Checked By: \_\_\_\_\_  
 Author: \_\_\_\_\_ Checker: \_\_\_\_\_  
 Date: 02/09/2024 Job No.: 23024  
 Sheet Title: **LIFE SAFETY PLAN - LEVEL 01**  
 Sheet No.: \_\_\_\_\_  
**LS-1.01-BC**  
 NOT RELEASED FOR CONSTRUCTION

**1 LIFE SAFETY PLAN - LEVEL 01**  
SCALE: 3/32" = 1'-0"















































































































































