

2020, Jericho Design Group, LLC. These drawings are protected by the copyright laws of the United States. These drawings or any part thereof may not be used for any purpose or reproduced in any form or by any means without the written consent of Doug Shaw.

2/9/2024 4:47:24 PM Autodesk Docs://Rockdale County Admin Bldg Model_R23/Rockdale County Admin Bldg Model_rv23_njacksonX47SL.nt

CODE REVIEW REFERENCE NOTES

IMC, CHAPTER 6
 IMC 602.2.1 MATERIALS WITHIN PLENUMS
 EXCEPT AS REQUIRED BY SECTIONS 602.2.1.1 THROUGH 602.2.1.8, MATERIALS WITHIN PLENUMS SHALL BE NONCOMBUSTIBLE OR SHALL BE LISTED AND LABELED AS HAVING A FLAME SPREAD INDEX OF NOT MORE THAN 25 AND A SMOKE-DEVELOPED INDEX OF NOT MORE THAN 50 WHEN TESTED IN ACCORDANCE WITH ASTM E84 OR UL 723.

NFPA, LSC 101, CHAPTER 8
 8.5.6.2 PENETRATIONS IN SMOKE BARRIERS
 PENETRATIONS FOR CABLES, CABLE TRAYS, CONDUITS, PIPES, TUBES, VENTS, WIRES, AND SIMILAR ITEMS TO ACCOMMODATE ELECTRICAL, MECHANICAL, PLUMBING, AND COMMUNICATIONS SYSTEMS THAT PASS THROUGH A WALL, FLOOR, OR FLOOR/CEILING ASSEMBLY SHALL BE CONSTRUCTED AS A SMOKE BARRIER, OR THROUGH THE CEILING MEMBRANE OF THE ROOF/CEILING OF A SMOKE BARRIER ASSEMBLY, SHALL BE PROTECTED BY A SYSTEM OR MATERIAL CAPABLE OF RESTRICTING THE TRANSFER OF SMOKE.

8.6.1 FLOOR SMOKE BARRIERS
 EVERY FLOOR THAT SEPARATES STORIES IN A BUILDING SHALL MEET THE FOLLOWING CRITERIA:
 1. IT SHALL BE CONSTRUCTED AS A SMOKE BARRIER IN ACCORDANCE WITH SECTION 8.5.
 2. IT SHALL BE PERMITTED TO HAVE OPENINGS AS DESCRIBED BY 8.6.6, 8.6.7, 8.6.8, 8.6.9, OR CHAPTERS 11 THROUGH 43.

8.6.6 COMMUNICATING SPACE
 UNLESS PROHIBITED BY CHAPTERS 11 THROUGH 43, UNENCLOSED FLOOR OPENINGS FORMING A COMMUNICATING SPACE BETWEEN FLOOR LEVELS SHALL BE PERMITTED, PROVIDED THAT THE FOLLOWING CONDITIONS ARE MET:
 1. THE COMMUNICATING SPACE DOES NOT CONNECT MORE THAN THREE CONTIGUOUS STORIES.
 2. THE LOWEST OR NEXT-TO-LOWEST STORY WITHIN THE COMMUNICATING SPACE IS A STREET FLOOR.
 3. THE ENTIRE FLOOR AREA OF THE COMMUNICATING SPACE IS OPEN AND UNOBSTRUCTED, SUCH THAT A FIRE IN ANY PART OF THE SPACE WILL BE READILY OBVIOUS TO THE OCCUPANTS OF THE SPACE PRIOR TO THE TIME IT BECOMES AN OCCUPANT HAZARD.
 4. THE COMMUNICATING SPACE IS SEPARATED FROM THE REMAINDER OF THE BUILDING BY FIRE BARRIERS WITH NOT LESS THAN A 1-HOUR FIRE RESISTANCE RATING, UNLESS ONE OF THE FOLLOWING IS MET:
 * IN BUILDINGS PROTECTED THROUGHOUT BY AN APPROVED AUTOMATIC SPRINKLER SYSTEM IN ACCORDANCE WITH SECTION 9.7, A SMOKE BARRIER IN ACCORDANCE WITH SECTION 8.5 SHALL BE PERMITTED TO SERVE AS THE SEPARATION REQUIRED BY 8.6.6 (4).
 * THE REQUIREMENT OF 8.6.6(4) SHALL NOT APPLY TO FULLY SPRINKLERED RESIDENTIAL HOUSING UNITS OF DETENTION AND CORRECTIONAL OCCUPANCIES IN ACCORDANCE WITH 22.3.1(2) AND 23.3.1.1(2).
 5. THE COMMUNICATING SPACE HAS ORDINARY HAZARD CONTENTS PROTECTED THROUGHOUT BY AN APPROVED AUTOMATIC SPRINKLER SYSTEM IN ACCORDANCE WITH SECTION 9.7 OR HAS ONLY LOW HAZARD CONTENTS. (SEE 8.2.2.)
 6. EGRESS CAPACITY IS SUFFICIENT TO ALLOW ALL THE OCCUPANTS OF ALL LEVELS WITHIN THE COMMUNICATING SPACE TO SIMULTANEOUSLY EGRESS THE COMMUNICATING SPACE BY CONSIDERING IT AS A SINGLE FLOOR AREA IN DETERMINING THE REQUIRED EGRESS CAPACITY.
 7. * EACH OCCUPANT WITHIN THE COMMUNICATING SPACE HAS ACCESS TO NOT LESS THAN ONE EXIT WITHOUT HAVING TO TRAVERSE ANOTHER STORY WITHIN THE COMMUNICATING SPACE.
 8. EACH OCCUPANT NOT IN THE COMMUNICATING SPACE HAS ACCESS TO NOT LESS THAN ONE EXIT WITHOUT HAVING TO ENTER THE COMMUNICATING SPACE.

Building Height and Area Increase Calculations

Allowable Area Assembly A3	28,500	7,125	35,625
Allowable Area Business	69,000	17,250	86,250

506.3 Amount of Area Increase
 $I_p = [F/P - 0.25]W/30$

Area Increase Due to Frontage = 0.75
 $I_p = [F/P - 0.25]W/30$
 $I_p = [1.191/1.191 - 0.25]30/30$
 $I_p = [1 - 0.25]1$
 $I_p = 0.75$

506.2.4 Mixed-Occupancy, Multistory Buildings
 $A_a = [A_1 + (NS \times I_p)]$

Assembly
 $A = Atab + (NS \times Area \text{ factor increase})$
 $A = 28,500 + (9,500 \times 0.75)$
 $A = 35,625$

Business
 $A = Atab + (NS \times Area \text{ factor increase})$
 $A = 69,000 + (23,000 \times 0.75)$
 $A = 69,000 + (23,000 \times 0.75)$
 $A = 86,250$

506.2.4 Mixed-Occupancy, Multistory Buildings
 Exception: For buildings designed as separated occupancies under Section 508.4 and equipped throughout with an automatic sprinkler system installed in accordance with Section 903.3.1.2, the total building area shall be such that the aggregate sum of the ratios of the actual area of each story divided by the allowable area of such stories determined in accordance with Equation 5-3 based on the applicable provisions of Section 508.1, shall not exceed four.

	Actual	Allowable	Ratio-Actual/Allowable
First floor Assembly Actual	11860	35625	0.33
First Floor Business Actual	41125	86250	0.48
Total	52985		0.81
Second floor Assembly Actual	537	35625	0.02
Second Floor Business Actual	33198	86250	0.38
Total	33735		0.40
Third floor Assembly Actual	4756	35625	0.13
Third Floor Business Actual	22940	86250	0.27
Total	27696		0.40
Fourth floor Assembly Actual	0	35625	0.00
Fourth Floor Business Actual	23679	86250	0.27
Total	23679		0.27
Aggregate Sum of the Ratios			1.88

BUILDING AREA AND OCCUPANCY AREA PER FLOOR

OCCUPANCY PER LSC TABLE 7.3.1.2

OCCUPANCY TYPE (PER FLOOR)	SQUARE FOOTAGE	OCCUPANT LOAD FACTOR	TOTAL OCCUPANCY (PER FLOOR)
FIRST FLOOR			
BUSINESS	35761	150 SF/ OCC.	239
BUSINESS (COLLAB.)	1773	30 SF/ OCC.	60
ASSEMBLY	11860	15 SF/ OCC.	791
STORAGE	2591	500 SF/ OCC.	6
TOTAL			1096
SECOND FLOOR			
BUSINESS	31802	150 SF/ OCC.	212
BUSINESS (COLLAB.)	1396	30 SF/ OCC.	47
ASSEMBLY	537	15 SF/ OCC.	36
STORAGE			
TOTAL			295
THIRD FLOOR			
BUSINESS	22445.5	150 SF/ OCC.	150
BUSINESS (COLLAB.)	495	30 SF/ OCC.	17
ASSEMBLY	4756	15 SF/ OCC.	318
STORAGE			
TOTAL			485
FOURTH FLOOR			
BUSINESS	22007	150 SF/ OCC.	150
BUSINESS (COLLAB.)	1409	30 SF/ OCC.	47
ASSEMBLY			
STORAGE	263	500 SF/ OCC.	1
TOTAL			198

BUILDING DATA

OCCUPANCY CLASSIFICATION:
 PRIMARY OCCUPANCY AS BUSINESS (NFPA CHPT. 6) GROUP B (IBC CHPT 3) W/ ASSEMBLY (NFPA CHPT. 6) GROUP A-3, STORAGE S-1 (IBC CHPT. 3) AS ANCILLARY

FIRE RATING CRITERIA

CRITERIA	RATING	U.L. NUMBER
PRIMARY STRUCTURAL FRAME:	0 HOUR	N/A
BEARING WALLS:	0 HOUR	N/A
EXTERIOR	0 HOUR	N/A
INTERIOR	0 HOUR	N/A
NONBEARING WALLS & PARTITIONS:	0 HOUR	N/A
EXTERIOR	0 HOUR	N/A
INTERIOR	0 HOUR	N/A
FLOOR CONSTRUCTION AND ASSOCIATED SECONDARY MEMBERS:	0 HOUR	N/A
ROOFS AND ROOF/CEILING: (EXCEPT WHERE STRUCTURAL MEMBERS SUPPORTING A ROOF ARE 20'-0" OR MORE ABOVE FLOOR LEVEL)	0 HOUR	N/A
PARTY AND FIRE WALLS:	3 HOUR	N/A
EXIT SEPARATIONS:	2 HOUR	U419
VERTICAL SHAFT ENCLOSURES:	2 HOUR	U415
ELEVATOR SHAFTS & ENCLOSURES:	2 HOUR	U415
INTERIOR WALLS AND CEILING FINISH REQUIREMENTS (IBC TABLE 803.13):		

HEIGHT AND AREA LIMITS (IBC):
 ALLOWABLE HEIGHT PER TABLE 503.75:
 -FOR TYPE II-B CONSTRUCTION (B, A3, S-1)

MAXIMUM NUMBER OF STORIES ABOVE GRADE PLANE
 -FOR OCCUPANCY 'B': 4, ACTUAL - 4
 -FOR OCCUPANCY 'A-3': 3, ACTUAL - 3
 -FOR OCCUPANCY 'S-1': 3, ACTUAL - 4 (ACCESSORY AREA)

ALLOWABLE FLOOR AREA
 -REFER TO BUILDING HEIGHT AND AREA INCREASE.

ACTUAL BUILDING AREA:
 -FOR OCCUPANCY 'B': 121,374
 -FOR OCCUPANCY 'A-3': 12,723
 -FOR STORAGE:
 (311.1.1 ACCESSORY STORAGE SPACES A ROOM OR SPACE USED FOR STORAGE PURPOSES THAT IS ACCESSORY TO ANOTHER OCCUPANCY SHALL BE CLASSIFIED AS PART OF THAT OCCUPANCY)

FIRE ALARM - YES

BUILDING AREAS (IBC):

LEVEL	AREA (GSF)	PERSONS
LEVEL 100	53202	1096
LEVEL 200	34726	295
LEVEL 300	25484	485
LEVEL 400	21156	198
TOTAL	134,568	2,074

OCCUPANCY SEPARATIONS (IBC TABLE 508.3.3):
 B TO A = 1 HRS
 B TO S-1 = NO SEPARATION REQUIREMENT

APPLICABLE CODES

2018 INTERNATIONAL BUILDING CODE WITH GEORGIA AMENDMENTS (2020, 2022)	2015 INTERNATIONAL ENERGY CONSERVATION CODE WITH GEORGIA SUPPLEMENTS AND AMENDMENTS (2020,2022)
2018 INTERNATIONAL FIRE CODE WITH GEORGIA AMENDMENTS (2020,2022)	2018 NFPA 101, LIFE SAFETY CODE WITH GEORGIA AMENDMENTS (2020,2022)
2018 INTERNATIONAL PLUMBING CODE WITH GEORGIA AMENDMENTS (2020,2022)	2019 NFPA 72, NATIONAL FIRE ALARM & SIGNALING CODE WITH GEORGIA AMENDMENTS (2020,2022)
2018 INTERNATIONAL MECHANICAL CODE WITH GEORGIA AMENDMENTS (2020)	2019 NFPA 13, STANDARD FOR THE INSTALLATION OF SPRINKLER SYSTEMS WITH GEORGIA AMENDMENTS (2020,2022)
2018 INTERNATIONAL FUEL GAS CODE WITH GEORGIA AMENDMENTS (2020,2022)	2010 ADA STANDARDS, PER RULES AND REGULATIONS OF THE SAFETY FIRE COMMISSIONER 120-3-20A
2020 NATIONAL ELECTRICAL CODE WITH GEORGIA AMENDMENTS (2021)	

LIFE SAFETY PLAN LEGEND

SEPARATION PER IBC CHAPTER 5

- 2-HOUR RATED PARTITION
- 1-HOUR RATED PARTITION
- SMOKE BARRIER (NON FIRE RATED)
- NON-RATED PARTITION

EXTINGUISHER LOCATION PER NFPA 10

- FEC FIRE EXTINGUISHER IN RECESSED CABINET
- FE BRACKET MOUNTED FIRE EXTINGUISHER

CAPACITY PER LSC 7.3.3.1

STAIRS = 0.37 PERSON
 DOORS = 0.21 PERSON
 32"W DOOR = 30" CLR = 150 CAPACITY
 36"W DOOR = 34" CLR = 170 CAPACITY
 42"W DOOR = 40" CLR = 200 CAPACITY
 48"W DOOR = 46" CLR = 230 CAPACITY
 68"W DOOR = 64" CLR = 320 CAPACITY
 72"W DOOR = 68" CLR = 340 CAPACITY
 96"W DOOR = 92" CLR = 460 CAPACITY

DOORS PER IBC 715.4

EXIT SIGNS PER IBC 1011

EXIT SIGNAGE (SHADING INDICATES FACE OF SIGN; ARROW SHOWN INDICATES DIRECTION)

OCCUPANCY TYPE LEGEND:

- ASSEMBLY (A-3)
- BUSINESS (B)
- BUSINESS (B), COLLABORATION ROOMS
- STORAGE (S-1)

OCCUPANCY PER LSC 7.3.1.2 PER GEORGIA AMENDMENTS TO THE IBC

AREA SF / OCCUPANT LOAD FACTOR - OCCUPANCY COUNT (REFER TO OCCUPANCY SCHEDULE FOR ROOM OCCUPANCY CALCULATIONS)

- ACCESSORY STORAGE AREAS, MECHANICAL, ELECTRICAL ROOMS = 500 GSF/PERSON
- ASSEMBLY (CONCENTRATED) = 7 NSF/PERSON
- ASSEMBLY (UNCONCENTRATED) = 15 NSF/PERSON
- CLASSROOM/TRAINING = 20 NSF/PERSON
- BUSINESS AREAS = 150 GSF/PERSON

ALLOWABLE DISTANCE PER LSC 12.2.6

TRAVEL DISTANCE LIMIT -
 GROUP A3: MAX. 250 FT. SPRINKLERED
 GROUP B: MAX. 300 FT. SPRINKLERED

COMMON PATH LIMIT -
 GROUP A-3: 20 FT. SPRINKLERED
 ~50 PERSONS: 50 FT. SPRINKLERED
 GROUP B: MAX. 100 FT. SPRINKLERED

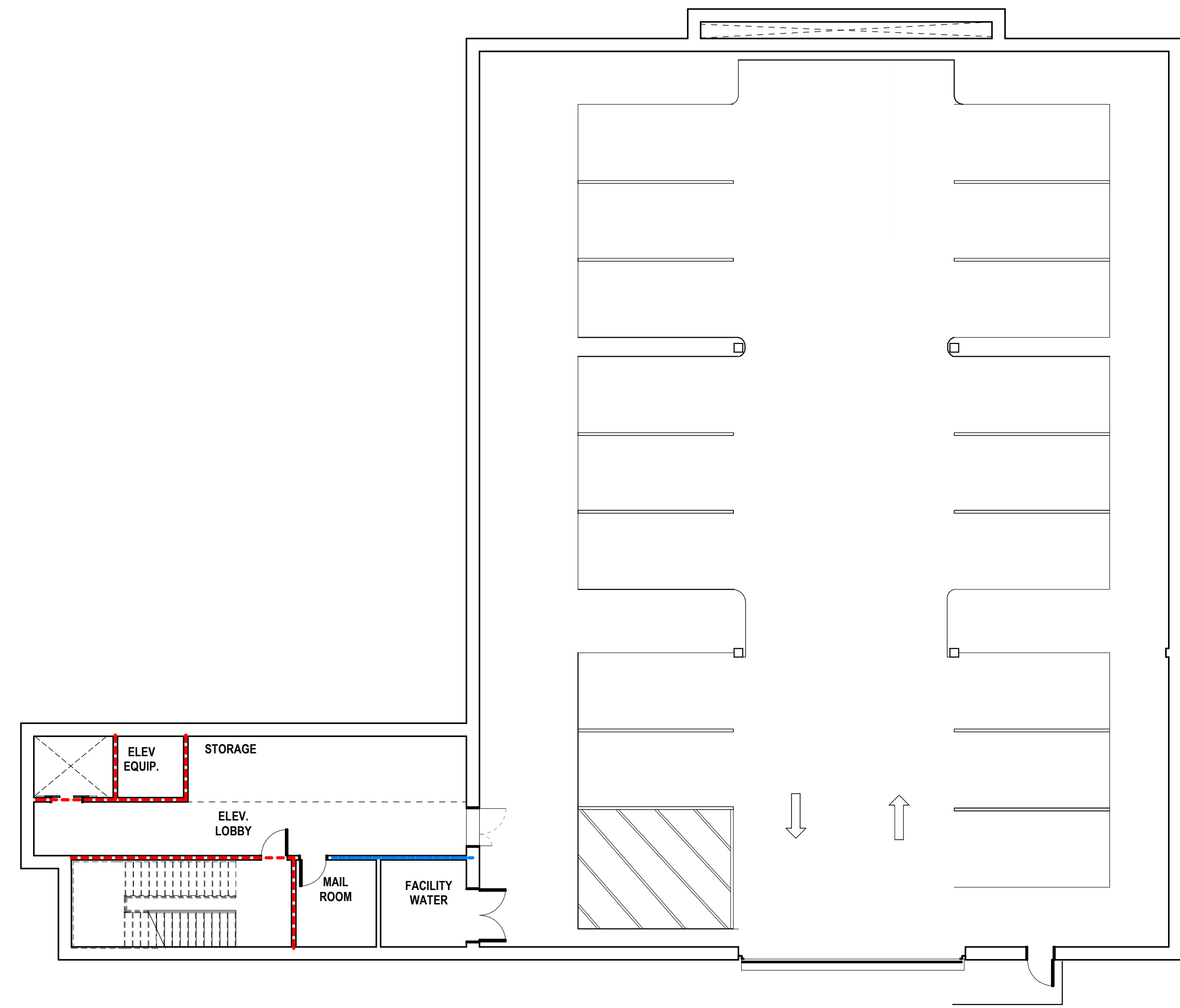
DEAD END LIMIT -
 GROUP A-3: 20 FT. SPRINKLERED
 GROUP B: MAX. 50 FT. SPRINKLERED

PATH OF EGRESS WITHIN BUILDING

TRAVEL DISTANCE & COMMON PATH (SEE NOTES ON PLANS)

NUMBER OF EXITS PER IBC 1015 & LSC 7.4.1.2

ACTUAL EGRESS COUNT
 EGRESS CAPACITY OF STAIR



BASEMENT - LIFE SAFETY
 3/32" = 1'-0"

PLUMBING FIXTURE REQUIREMENTS

OCCUPANCY	WATER CLOSETS	LAVATORIES	DRINKING FOUNTAINS	SERVICE SINK
ASSEMBLY A-3	1 PER 125 (MALE) 1 PER 65 (FEMALE)	1 PER 200	1 PER 200	1
BUSINESS	1 PER 25 FOR THE FIRST 50 AND 1 PER 50 FOR THE REMAINDER EXCEEDING 50	1 PER 40 FOR THE FIRST 80 AND 1 PER 80 FOR THE REMAINDER EXCEEDING 80	1 PER 100	1

PLUMBING FIXTURE COUNT: (TOTAL OCCUPANCY 2,069)

OCCUPANCY	WATER CLOSETS	LAVATORIES	DRINKING FOUNTAINS	SERVICE SINK
ASSEMBLY A-3 1145 PERSONS M.573, F.573	REQUIRED M F 5 9	REQUIRED M F 3 3	REQUIRED 7	REQUIRED 1
BUSINESS 924 PERSONS M.465, F.465	REQUIRED M F 11 11	REQUIRED M F 7 7	REQUIRED 7	REQUIRED 1
TOTAL (BUSINESS + ASSEMBLY)	REQUIRED M F M F 16 20 19 29	REQUIRED M F M F 10 10 10 10	REQUIRED M F 14 16	REQUIRED M F 2 4
FAMILY /ASSISTED USE RESTROOMS	REQUIRED UNISEX 1	REQUIRED UNISEX 4	REQUIRED UNISEX 1	REQUIRED UNISEX 4



208 Pirkle Ferry Road, Suite C
 Cumming, GA 30040



ROCKDALE COUNTY JUDICIAL AND ADMINISTRATIVE COMPLEX
 ADMINISTRATION BUILDING - PHASE 1 SCHEMATIC DESIGN
 922 COURT STREET
 CONYERS, GEORGIA 30012

PRINT RECORD

No.	DATE	DESCRIPTION
1	02/08/2023	SD Package

Drawn By: Author
 Checked By: Checker
 Date: 02/08/2024
 Job No.: 23.0002839.000
 Sheet Title: LIFE SAFETY PLAN - BASEMENT

Sheet No.:
LS-1.01
 NOT FOR CONSTRUCTION

2020, Jericho Design Group, LLC. These drawings are protected by the copyright laws of the United States. These drawings or any part thereof may not be used for any purpose or reproduced in any form or by any means without the written consent of Doug Shaw.

CODE REVIEW REFERENCE NOTES

IMC, CHAPTER 6
IMC 602.2.1 MATERIALS WITHIN PLENUMS
EXCEPT AS REQUIRED BY SECTIONS 602.2.1.1 THROUGH 602.2.1.8, MATERIALS WITHIN PLENUMS SHALL BE NONCOMBUSTIBLE OR SHALL BE LISTED AND LABELED AS HAVING A FLAME SPREAD INDEX OF NOT MORE THAN 25 AND A SMOKE-DEVELOPED INDEX OF NOT MORE THAN 50 WHEN TESTED IN ACCORDANCE WITH ASTM E84 OR UL 723.

Building Height and Area Increase Calculations
Table 506.2 .75 Area Increase Allowable Area
28,500 7,125 35,625
69,000 17,250 86,250

BUILDING AREA AND OCCUPANCY AREA PER FLOOR
OCCUPANCY PER LSC TABLE 7.3.1.2
OCCUPANCY TYPE (PER FLOOR) SQUARE FOOTAGE OCCUPANT LOAD FACTOR TOTAL OCCUPANCY (PER FLOOR)

BUILDING DATA
OCCUPANCY CLASSIFICATION: PRIMARY OCCUPANCY AS BUSINESS (NFPA CHPT. 6) GROUP B
FIRE RATING CRITERIA: PRIMARY STRUCTURAL FRAME: 0 HOUR N/A
TYPE OF CONSTRUCTION (IBC): TYPE II-B, UNPROTECTED, SPRINKLERED (OFFICE BUILDING)

APPLICABLE CODES
2018 INTERNATIONAL BUILDING CODE WITH GEORGIA AMENDMENTS (2020, 2022)
2015 INTERNATIONAL ENERGY CONSERVATION CODE WITH GEORGIA SUPPLEMENTS AND AMENDMENTS (2020,2022)

LIFE SAFETY PLAN LEGEND
SEPARATION PER IBC CHAPTER 5
EXTINGUISHER LOCATION PER NFPA 10
CAPACITY PER LSC 7.3.3.1
DOORS PER IBC 715.4
EXIT SIGNS PER IBC 1011
OCCUPANCY TYPE LEGEND:

PLUMBING FIXTURE REQUIREMENTS
OCCUPANCY WATER CLOSETS LAVATORIES DRINKING FOUNTAINS SERVICE SINK
ASSEMBLY A-3 1 PER 125 (MALE) 1 PER 200 1 PER 200 1

PLUMBING FIXTURE COUNT: (TOTAL OCCUPANCY 2,069)
OCCUPANCY WATER CLOSETS LAVATORIES DRINKING FOUNTAINS SERVICE SINK
ASSEMBLY A-3 1145 PERSONS M.573, F.573



208 Pirkle Ferry Road, Suite C
Cumming, GA 30040

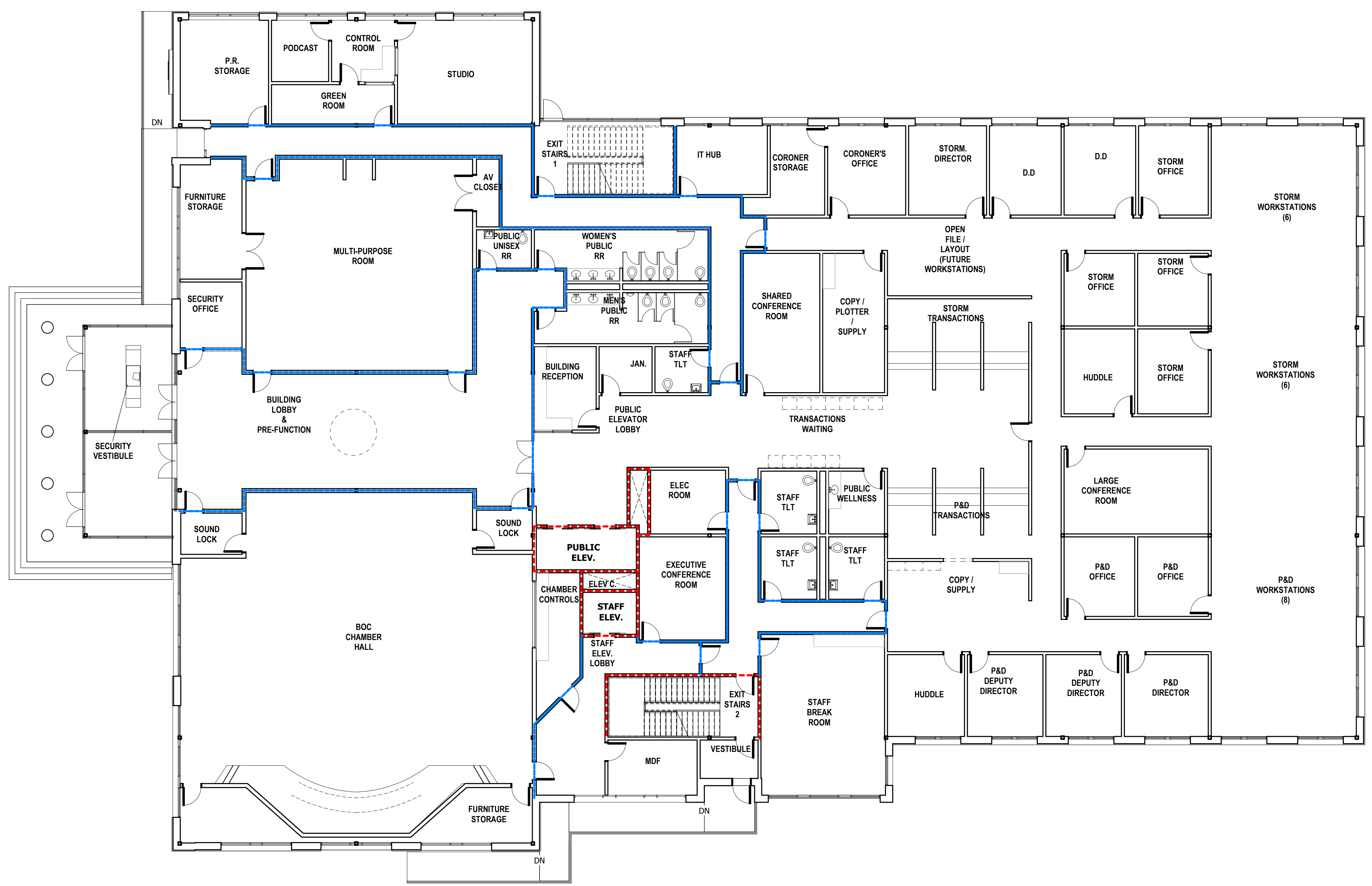


ROCKDALE COUNTY JUDICIAL AND ADMINISTRATIVE COMPLEX
ADMINISTRATION BUILDING - PHASE 1 SCHEMATIC DESIGN
922 COURT STREET
CONYERS, GEORGIA 30012

PRINT RECORD
No. DATE DESCRIPTION
1 02/08/2023 SD Package

Drawn By: Author
Checked By: Checker
Date: 02/08/2024
Job No.: 23.0002839.000

Sheet No.
LS-1.02
NOT FOR CONSTRUCTION



01 PLAZA LEVEL - LIFE SAFETY
3/32" = 1'-0"

2020, Jericho Design Group, LLC. These drawings are protected by the copyright laws of the United States. These drawings or any part thereof may not be used for any purpose or reproduced in any form or by any means without the written consent of Doug Shaw.

CODE REVIEW REFERENCE NOTES
IMC, CHAPTER 6
IMC 602.2.1 MATERIALS WITHIN PLENUMS
EXCEPT AS REQUIRED BY SECTIONS 602.2.1.1 THROUGH 602.2.1.8, MATERIALS WITHIN PLENUMS SHALL BE NONCOMBUSTIBLE OR SHALL BE LISTED AND LABELED AS HAVING A FLAME SPREAD INDEX OF NOT MORE THAN 25 AND A SMOKE-DEVELOPED INDEX OF NOT MORE THAN 50 WHEN TESTED IN ACCORDANCE WITH ASTM E84 OR UL 723.
NFPA, LSC 101, CHAPTER 8
8.5.6.2 PENETRATIONS IN SMOKE BARRIERS
PENETRATIONS FOR CABLES, CABLE TRAYS, CONDUITS, PIPES, TUBES, VENTS, WIRES, AND SIMILAR ITEMS TO ACCOMMODATE ELECTRICAL, MECHANICAL, PLUMBING, AND COMMUNICATIONS SYSTEMS THAT PASS THROUGH A WALL, FLOOR, OR FLOOR/CEILING ASSEMBLY SHALL BE CONSTRUCTED AS A SMOKE BARRIER, OR THROUGH THE CEILING MEMBRANE OF THE ROOF/CEILING OF A SMOKE BARRIER ASSEMBLY, SHALL BE PROTECTED BY A SYSTEM OR MATERIAL CAPABLE OF RESTRICTING THE TRANSFER OF SMOKE.
8.6.1 FLOOR SMOKE BARRIERS
EVERY FLOOR THAT SEPARATES STORIES IN A BUILDING SHALL MEET THE FOLLOWING CRITERIA:
1. IT SHALL BE CONSTRUCTED AS A SMOKE BARRIER IN ACCORDANCE WITH SECTION 8.5.
2. IT SHALL BE PERMITTED TO HAVE OPENINGS AS DESCRIBED BY 8.6.6, 8.6.7, 8.6.8, 8.6.9, OR CHAPTERS 11 THROUGH 43.
8.6.6 COMMUNICATING SPACE
UNLESS PROHIBITED BY CHAPTERS 11 THROUGH 43, UNENCLOSED FLOOR OPENINGS FORMING A COMMUNICATING SPACE BETWEEN FLOOR LEVELS SHALL BE PERMITTED, PROVIDED THAT THE FOLLOWING CONDITIONS ARE MET:
1. THE COMMUNICATING SPACE DOES NOT CONNECT MORE THAN THREE CONTIGUOUS STORIES.
2. THE LOWEST OR NEXT-TO-LOWEST STORY WITHIN THE COMMUNICATING SPACE IS A STREET FLOOR.
3. THE ENTIRE FLOOR AREA OF THE COMMUNICATING SPACE IS OPEN AND UNOBSTRUCTED, SUCH THAT AT ANY PART OF THE SPACE WILL BE READILY OBVIOUS TO THE OCCUPANTS OF THE SPACE PRIOR TO THE TIME IT BECOMES AN OCCUPANT HAZARD.
4. THE COMMUNICATING SPACE IS SEPARATED FROM THE REMAINDER OF THE BUILDING BY FIRE BARRIERS WITH NOT LESS THAN A 1-HOUR FIRE RESISTANCE RATING, UNLESS ONE OF THE FOLLOWING IS MET:
• IN BUILDINGS PROTECTED THROUGHOUT BY AN APPROVED AUTOMATIC SPRINKLER SYSTEM IN ACCORDANCE WITH SECTION 9.7, A SMOKE BARRIER IN ACCORDANCE WITH SECTION 8.6.5 SHALL BE PERMITTED TO SERVE AS THE SEPARATION REQUIRED BY 8.6.6 (4).
• THE REQUIREMENT OF 8.6.6(4) SHALL NOT APPLY TO FULLY SPRINKLERED RESIDENTIAL HOUSING UNITS OF DETENTION AND CORRECTIONAL FACILITIES IN ACCORDANCE WITH 22.9.1(2) AND 23.3.1.1(2).
5. THE COMMUNICATING SPACE HAS ORDINARY HAZARD CONTENTS PROTECTED THROUGHOUT BY AN APPROVED AUTOMATIC SPRINKLER SYSTEM IN ACCORDANCE WITH SECTION 9.7 OR HAS ONLY LOW HAZARD CONTENTS. (SEE 8.2.2.)
6. EGRESS CAPACITY IS SUFFICIENT TO ALLOW ALL THE OCCUPANTS OF ALL LEVELS WITHIN THE COMMUNICATING SPACE TO SIMULTANEOUSLY EGRESS THE COMMUNICATING SPACE BY CONSIDERING IT AS A SINGLE FLOOR AREA IN DETERMINING THE REQUIRED EGRESS CAPACITY.
7. EACH OCCUPANT WITHIN THE COMMUNICATING SPACE HAS ACCESS TO NOT LESS THAN ONE EXIT WITHOUT HAVING TO TRAVERSE ANOTHER STORY WITHIN THE COMMUNICATING SPACE.
8. EACH OCCUPANT NOT IN THE COMMUNICATING SPACE HAS ACCESS TO NOT LESS THAN ONE EXIT WITHOUT HAVING TO ENTER THE COMMUNICATING SPACE.

Building Height and Area Increase Calculations
Table 506.2 .75 Area Increase Allowable Area
28,500 7,125 35,625
69,000 17,250 86,250
506.3 Amount of Area Increase
I_f = [F/P - 0.25]W/30
Area Increase Due to Frontage 0.75
h=[F/P-0.25]W/30
h=[1.191/1.191-0.25]30/30
h=[1-0.25]1
h=0.75
506.2.4 Mixed-Occupancy, Multistory Buildings
A_f = [A₁ + (NS x I_f)]
Assembly
A=Atab+(NSxArea factor increase)
A=28,500+(9,500x.75)
A=35,625
Business
A=Atab+(NSxArea factor increase)
A=69,000+(23,000x.75)
A=69,000+(23,000x.75)
A=86,250
506.2.4 Mixed-Occupancy, Multistory Buildings
Exception: For buildings designed as separated occupancies under Section 508.4 and equipped throughout with an automatic sprinkler system installed in accordance with Section 903.3.1.2, the total building area shall be such that the aggregate sum of the ratios of the actual area of each story divided by the allowable area of such stories determined in accordance with Equation 5-3 based on the applicable provisions of Section 508.1, shall not exceed four.
Ratio-Actual/Allowable
First floor Assembly Actual 11860 35625 0.33
First Floor Business Actual 41125 86250 0.48
Total 52985 0.81
Second floor Assembly Actual 537 35625 0.02
Second Floor Business Actual 33198 86250 0.38
Total 33735 0.40
Third floor Assembly Actual 4756 35625 0.13
Third Floor Business Actual 22940 86250 0.27
Total 27696 0.40
Fourth floor Assembly Actual 0 35625 0.00
Fourth Floor Business Actual 23679 86250 0.27
Total 23679 0.27
Aggregate Sum of the Ratios 1.88

BUILDING AREA AND OCCUPANCY AREA PER FLOOR
OCCUPANCY PER LSC TABLE 7.3.1.2
OCCUPANCY TYPE (PER FLOOR) SQUARE FOOTAGE OCCUPANT LOAD FACTOR TOTAL OCCUPANCY (PER FLOOR)
FIRST FLOOR
BUSINESS 35761 150 SF/OCC. 239
BUSINESS (COLLAB.) 1773 30 SF/OCC. 60
ASSEMBLY 11860 15 SF/OCC. 791
STORAGE 2591 500 SF/OCC. 6
TOTAL 1096
SECOND FLOOR
BUSINESS 31802 150 SF/OCC. 212
BUSINESS (COLLAB.) 1396 30 SF/OCC. 47
ASSEMBLY 537 15 SF/OCC. 36
STORAGE
TOTAL 295
THIRD FLOOR
BUSINESS 22445.5 150 SF/OCC. 150
BUSINESS (COLLAB.) 495 30 SF/OCC. 17
ASSEMBLY 4756 15 SF/OCC. 318
STORAGE
TOTAL 485
FOURTH FLOOR
BUSINESS 22007 150 SF/OCC. 150
BUSINESS (COLLAB.) 1409 30 SF/OCC. 47
ASSEMBLY
STORAGE 263 500 SF/OCC. 1
TOTAL 198

BUILDING DATA
OCCUPANCY CLASSIFICATION: PRIMARY OCCUPANCY AS BUSINESS (NFPA CHPT. 6) GROUP B (IBC CHPT 3) W/ ASSEMBLY (NFPA CHPT. 6) GROUP A-3, STORAGE S-1 (IBC CHPT. 3) AS ANGLIARY
FIRE RATING CRITERIA: PRIMARY STRUCTURAL FRAME: 0 HOUR N/A
BEARING WALLS: EXTERIOR 0 HOUR N/A, INTERIOR 0 HOUR N/A
NONBEARING WALLS & PARTITIONS: EXTERIOR 0 HOUR N/A, INTERIOR 0 HOUR N/A
FLOOR CONSTRUCTION AND ASSOCIATED SECONDARY MEMBERS: 0 HOUR N/A
ROOFS AND ROOF/CEILING: (EXCEPT WHERE STRUCTURAL MEMBERS SUPPORTING A ROOF ARE 20'-0" OR MORE ABOVE FLOOR LEVEL)
PARTY AND FIRE WALLS: 3 HOUR N/A
EXIT SEPARATIONS: 2 HOUR U419
VERTICAL SHAFT ENCLOSURES: 2 HOUR U415
ELEVATOR SHAFTS & ENCLOSURES: 2 HOUR U415
ELEVATOR WALL AND CEILING FINISH REQUIREMENTS (IBC TABLE 803.13):
CORRIDORS AND STAIRWAYS AND ENCLOSURE FOR EXIT RAMPS AND EXIT PASSAGeways: C
ACCESSORY STORAGE AREAS, MECHANICAL, ELECTRICAL ROOMS = 500 GSF/PERSON
ASSEMBLY (CONCENTRATED) = 7 NSF/PERSON
ASSEMBLY (UNCONCENTRATED) = 15 NSF/PERSON
CLASSROOM/TRAINING = 20 NSF/PERSON
BUSINESS AREAS = 150 GSF/PERSON
ALLOWABLE DISTANCE PER LSC 12.2.6
TRAVEL DISTANCE LIMIT - GROUP A-3: MAX. 250 FT. SPRINKLERED, MAX. 300 FT. SPRINKLERED
COMMON PATH LIMIT - GROUP A-3: 20 FT. SPRINKLERED, ~50 PERSONS: 50 FT. SPRINKLERED, GROUP B: MAX. 100 FT. SPRINKLERED
DEAD END LIMIT - GROUP A-3: 20 FT. SPRINKLERED, GROUP B: MAX. 50 FT. SPRINKLERED
PATH OF EGRESS WITHIN BUILDING
TRAVEL DISTANCE & COMMON PATH (SEE NOTES ON PLANS)
NUMBER OF EXITS PER IBC 1015 & LSC 7.4.1.2
EGRESS CAPACITY OF STAIR

APPLICABLE CODES
2018 INTERNATIONAL BUILDING CODE WITH GEORGIA AMENDMENTS (2020, 2022)
2018 INTERNATIONAL FIRE CODE WITH GEORGIA AMENDMENTS (2020,2022)
2018 INTERNATIONAL PLUMBING CODE WITH GEORGIA AMENDMENTS (2020,2022)
2018 INTERNATIONAL MECHANICAL CODE WITH GEORGIA AMENDMENTS (2020)
2018 INTERNATIONAL FUEL GAS CODE WITH GEORGIA AMENDMENTS (2020,2022)
2020 NATIONAL ELECTRICAL CODE WITH GEORGIA AMENDMENTS (2021)
2015 INTERNATIONAL ENERGY CONSERVATION CODE WITH GEORGIA SUPPLEMENTS AND AMENDMENTS (2020,2022)
2018 NFPA 101, LIFE SAFETY CODE WITH GEORGIA AMENDMENTS (2020,2022)
2019 NFPA 72, NATIONAL FIRE ALARM & SIGNALING CODE WITH GEORGIA AMENDMENTS (2020,2022)
2019 NFPA 13, STANDARD FOR THE INSTALLATION OF SPRINKLER SYSTEMS WITH GEORGIA AMENDMENTS (2020,2022)
2010 ADA STANDARDS, PER RULES AND REGULATIONS OF THE SAFETY FIRE COMMISSIONER 120-3-20A

LIFE SAFETY PLAN LEGEND
SEPARATION PER IBC CHAPTER 5
2-HOUR RATED PARTITION
1-HOUR RATED PARTITION
SMOKE BARRIER (NON FIRE RATED)
NON-RATED PARTITION
EXTINGUISHER LOCATION PER NFPA 10
FIRE EXTINGUISHER IN RECESSED CABINET
BRACKET MOUNTED FIRE EXTINGUISHER
CAPACITY PER LSC 7.3.3.1
STAIRS = 0.37/PERSON
DOORS = 0.21/PERSON
32"W DOOR = 30" CLR = 150 CAPACITY
36"W DOOR = 34" CLR = 170 CAPACITY
42"W DOOR = 40" CLR = 200 CAPACITY
48"W DOOR = 46" CLR = 230 CAPACITY
68"W DOOR = 64" CLR = 320 CAPACITY
72"W DOOR = 68" CLR = 340 CAPACITY
96"W DOOR = 92" CLR = 460 CAPACITY
DOORS PER IBC 715.4
EXIT SIGNS PER IBC 1011
EXIT SIGNAGE (SHADING INDICATES FACE OF SIGN; ARROW SHOWS INDICATES DIRECTION)
OCCUPANCY TYPE LEGEND:
ASSEMBLY (A-3)
BUSINESS (B)
BUSINESS (B)
COLLABORATION ROOMS
STORAGE (S-1)
OCCUPANCY PER LSC 7.3.1.2 PER GEORGIA AMENDMENTS TO THE IBC
AREA SF / OCCUPANT LOAD FACTOR = OCCUPANCY COUNT (REFER TO OCCUPANCY SCHEDULE FOR ROOM OCCUPANCY CALCULATIONS)
ACCESSORY STORAGE AREAS, MECHANICAL, ELECTRICAL ROOMS = 500 GSF/PERSON
ASSEMBLY (CONCENTRATED) = 7 NSF/PERSON
ASSEMBLY (UNCONCENTRATED) = 15 NSF/PERSON
CLASSROOM/TRAINING = 20 NSF/PERSON
BUSINESS AREAS = 150 GSF/PERSON
ALLOWABLE DISTANCE PER LSC 12.2.6
TRAVEL DISTANCE LIMIT - GROUP A-3: MAX. 250 FT. SPRINKLERED, MAX. 300 FT. SPRINKLERED
COMMON PATH LIMIT - GROUP A-3: 20 FT. SPRINKLERED, ~50 PERSONS: 50 FT. SPRINKLERED, GROUP B: MAX. 100 FT. SPRINKLERED
DEAD END LIMIT - GROUP A-3: 20 FT. SPRINKLERED, GROUP B: MAX. 50 FT. SPRINKLERED
PATH OF EGRESS WITHIN BUILDING
TRAVEL DISTANCE & COMMON PATH (SEE NOTES ON PLANS)
NUMBER OF EXITS PER IBC 1015 & LSC 7.4.1.2
EGRESS CAPACITY OF STAIR

PLUMBING FIXTURE REQUIREMENTS
OCCUPANCY WATER CLOSETS LAVATORIES DRINKING FOUNTAINS SERVICE SINK
ASSEMBLY A-3 1 PER 125 (MALE) 1 PER 200 1 PER 200 1
1 PER 65 (FEMALE)
BUSINESS 1 PER 25 FOR THE FIRST 50 AND 1 PER 50 FOR THE REMAINDER EXCEEDING 50 1 PER 40 FOR THE FIRST 80 AND 1 PER 80 FOR THE REMAINDER EXCEEDING 80 1 PER 100 1
PLUMBING FIXTURE COUNT: (TOTAL OCCUPANCY 2,069)
OCCUPANCY WATER CLOSETS LAVATORIES DRINKING FOUNTAINS SERVICE SINK
ASSEMBLY A-3 1145 PERSONS M.573, F.573
BUSINESS 929 PERSONS M.465, F.465
TOTAL (BUSINESS + ASSEMBLY)
FAMILY /ASSISTED USE RESTROOMS



208 Pirkle Ferry Road, Suite C
Cumming, GA 30040



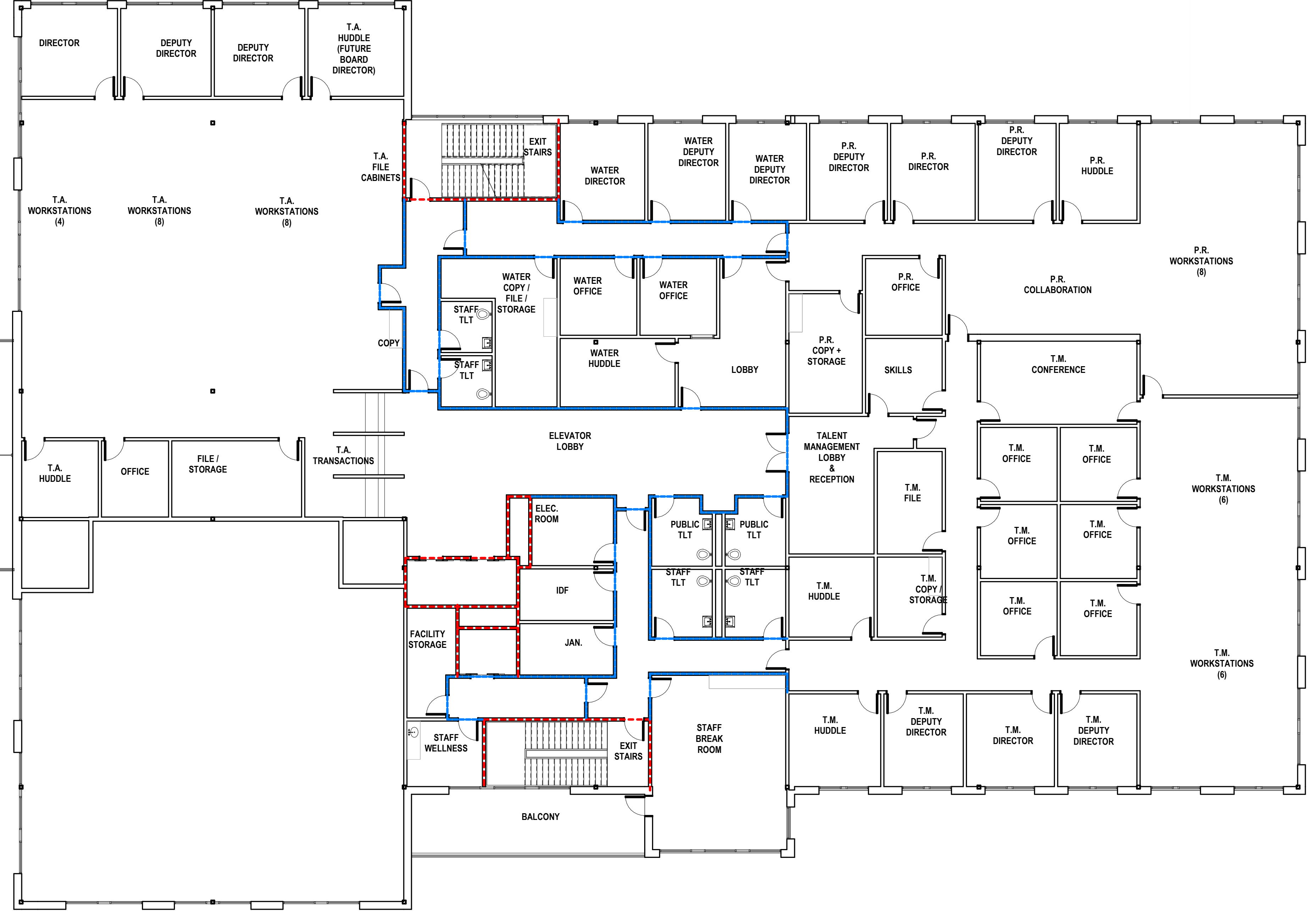
ROCKDALE COUNTY JUDICIAL AND ADMINISTRATIVE COMPLEX
ADMINISTRATION BUILDING - PHASE 1 SCHEMATIC DESIGN
922 COURT STREET
CONYERS, GEORGIA 30012

PRINT RECORD
No. DATE DESCRIPTION
1 02/08/2023 SD Package

Drawn By Author
Checked By Checker
Date 02/08/2024
Job No. 23.0002839.000

Sheet Title
LIFE SAFETY PLAN - SECOND LEVEL

Sheet No.
LS-1.03
NOT FOR CONSTRUCTION



02 SECOND LEVEL - LIFE SAFETY
3/32" = 1'-0"

2/9/2024 4:47:30 PM
Autodesk Docs://Rockdale County Admin Bldg Model_R23/Rockdale County Admin Bldg Model_rv23_njacksonX47SL.nvt

2020, Jericho Design Group, LLC. These drawings are protected by the copyright laws of the United States. These drawings or any part thereof may not be used for any purpose or reproduced in any form or by any means without the written consent of Doug Shaw.

CODE REVIEW REFERENCE NOTES
IMC, CHAPTER 6
IMC 602.2.1 MATERIALS WITHIN PLENUMS
EXCEPT AS REQUIRED BY SECTIONS 602.2.1.1 THROUGH 602.2.1.8, MATERIALS WITHIN PLENUMS SHALL BE NONCOMBUSTIBLE OR SHALL BE LISTED AND LABELED AS HAVING A FLAME SPREAD INDEX OF NOT MORE THAN 25 AND A SMOKE-DEVELOPED INDEX OF NOT MORE THAN 50 WHEN TESTED IN ACCORDANCE WITH ASTM E84 OR UL 723.

NFPA, LSC 101, CHAPTER 8
8.5.6.2 PENETRATIONS IN SMOKE BARRIERS
PENETRATIONS FOR CABLES, CABLE TRAYS, CONDUITS, PIPES, TUBES, VENTS, WIRES, AND SIMILAR ITEMS TO ACCOMMODATE ELECTRICAL, MECHANICAL, PLUMBING, AND COMMUNICATIONS SYSTEMS THAT PASS THROUGH A WALL, FLOOR, OR FLOOR/CEILING ASSEMBLY CONSTRUCTED AS A SMOKE BARRIER, OR THROUGH THE CEILING MEMBRANE OF THE ROOF/CEILING OF A SMOKE BARRIER ASSEMBLY, SHALL BE PROTECTED BY A SYSTEM OR MATERIAL CAPABLE OF RESTRICTING THE TRANSFER OF SMOKE.

8.6.1 FLOOR SMOKE BARRIERS
EVERY FLOOR THAT SEPARATES STORIES IN A BUILDING SHALL MEET THE FOLLOWING CRITERIA:
1. IT SHALL BE CONSTRUCTED AS A SMOKE BARRIER IN ACCORDANCE WITH SECTION 8.5.
2. IT SHALL BE PERMITTED TO HAVE OPENINGS AS DESCRIBED BY 8.6.6, 8.6.7, 8.6.8, 8.6.9, OR CHAPTERS 11 THROUGH 43.

8.6.6 COMMUNICATING SPACE
UNLESS PROHIBITED BY CHAPTERS 11 THROUGH 43, UNENCLOSED FLOOR OPENINGS FORMING A COMMUNICATING SPACE BETWEEN FLOOR LEVELS SHALL BE PERMITTED, PROVIDED THAT THE FOLLOWING CONDITIONS ARE MET:
1. THE COMMUNICATING SPACE DOES NOT CONNECT MORE THAN THREE CONTIGUOUS STORIES.
2. THE LOWEST OR NEXT-TO-LOWEST STORY WITHIN THE COMMUNICATING SPACE IS A STREET FLOOR.
3. THE ENTIRE FLOOR AREA OF THE COMMUNICATING SPACE IS OPEN AND UNOBSTRUCTED, SUCH THAT A FIRE IN ANY PART OF THE SPACE WILL BE READILY OBVIOUS TO THE OCCUPANTS OF THE SPACE PRIOR TO THE TIME IT BECOMES AN OCCUPANT HAZARD.
4. THE COMMUNICATING SPACE IS SEPARATED FROM THE REMAINDER OF THE BUILDING BY FIRE BARRIERS WITH NOT LESS THAN A 1-HOUR FIRE RESISTANCE RATING, UNLESS ONE OF THE FOLLOWING IS MET:
• IN BUILDINGS PROTECTED THROUGHOUT BY AN APPROVED AUTOMATIC SPRINKLER SYSTEM IN ACCORDANCE WITH SECTION 9.7, A SMOKE BARRIER IN ACCORDANCE WITH SECTION 8.6 SHALL BE PERMITTED TO SERVE AS THE SEPARATION REQUIRED BY 8.6.6 (4).
• THE REQUIREMENT OF 8.6.6(4) SHALL NOT APPLY TO FULLY SPRINKLERED RESIDENTIAL HOUSING UNITS OF DETENTION AND CORRECTIONAL OCCUPANCIES IN ACCORDANCE WITH 22.9.1(2) AND 23.3.1.1(2).
5. THE COMMUNICATING SPACE HAS ORDINARY HAZARD CONTENTS PROTECTED THROUGHOUT BY AN APPROVED AUTOMATIC SPRINKLER SYSTEM IN ACCORDANCE WITH SECTION 9.7 OR HAS ONLY LOW HAZARD CONTENTS. (SEE 8.2.2.)
6. EGRESS CAPACITY IS SUFFICIENT TO ALLOW ALL THE OCCUPANTS OF ALL LEVELS WITHIN THE COMMUNICATING SPACE TO SIMULTANEOUSLY EGRESS THE COMMUNICATING SPACE BY CONSIDERING IT AS A SINGLE FLOOR AREA IN DETERMINING THE REQUIRED EGRESS CAPACITY.
7. EACH OCCUPANT WITHIN THE COMMUNICATING SPACE HAS ACCESS TO NOT LESS THAN ONE EXIT WITHOUT HAVING TO TRAVERSE ANOTHER STORY WITHIN THE COMMUNICATING SPACE.
8. EACH OCCUPANT NOT IN THE COMMUNICATING SPACE HAS ACCESS TO NOT LESS THAN ONE EXIT WITHOUT HAVING TO ENTER THE COMMUNICATING SPACE.

Building Height and Area Increase Calculations
Table 506.2 .75 Area Increase Allowable Area
Allowable Area Assembly A3 28,500 7,125 35,625
Allowable Area Business 69,000 17,250 86,250
506.3 Amount of Area Increase
I_p = [F/P - 0.25]W/30
Area Increase Due to Frontage 0.75
h=[F/P-0.25]W/30
h=[1.191/1.191-0.25]30/30
h=[1-0.25]1
h=0.75
506.2.4 Mixed-Occupancy, Multistory Buildings
A_a = [A₁ + (NS x I_p)]
Assembly
A=Atab+(NSxArea factor increase)
A=28,500+(9,500x.75)
A=35,625
Business
A=Atab+(NSxArea factor increase)
A=69,000+(23,000x.75)
A=86,250
506.2.4 Mixed-Occupancy, Multistory Buildings
Exception: For buildings designed as separated occupancies under Section 508.4 and equipped throughout with an automatic sprinkler system installed in accordance with Section 903.3.1.2, the total building area shall be such that the aggregate sum of the ratios of the actual area of each story divided by the allowable area of such stories determined in accordance with Equation 5-3 based on the applicable provisions of Section 508.1, shall not exceed four.
Ratio-Actual/Allowable
First floor Assembly Actual 11860 35625 0.33
First Floor Business Actual 41125 86250 0.48
Total 52985 0.81
Second floor Assembly Actual 537 35625 0.02
Second Floor Business Actual 33198 86250 0.38
Total 33735 0.40
Third floor Assembly Actual 4756 35625 0.13
Third Floor Business Actual 22940 86250 0.27
Total 27696 0.40
Fourth floor Assembly Actual 0 35625 0.00
Fourth Floor Business Actual 23679 86250 0.27
Total 23679 0.27
Aggregate Sum of the Ratios 1.88

BUILDING AREA AND OCCUPANCY AREA PER FLOOR
OCCUPANCY PER LSC TABLE 7.3.1.2
OCCUPANCY TYPE (PER FLOOR) SQUARE FOOTAGE OCCUPANT LOAD FACTOR TOTAL OCCUPANCY (PER FLOOR)
FIRST FLOOR
BUSINESS 35761 150 SF/OCC. 239
BUSINESS (COLLAB.) 1773 30 SF/OCC. 60
ASSEMBLY 11860 15 SF/OCC. 791
STORAGE 2591 500 SF/OCC. 6
TOTAL 1096
SECOND FLOOR
BUSINESS 31802 150 SF/OCC. 212
BUSINESS (COLLAB.) 1396 30 SF/OCC. 47
ASSEMBLY 537 15 SF/OCC. 36
STORAGE 500 SF/OCC. 1
TOTAL 295
THIRD FLOOR
BUSINESS 22445.5 150 SF/OCC. 150
BUSINESS (COLLAB.) 495 30 SF/OCC. 17
ASSEMBLY 4756 15 SF/OCC. 318
STORAGE 500 SF/OCC. 1
TOTAL 485
FOURTH FLOOR
BUSINESS 22007 150 SF/OCC. 150
BUSINESS (COLLAB.) 1409 30 SF/OCC. 47
ASSEMBLY 500 SF/OCC. 1
STORAGE 263 500 SF/OCC. 1
TOTAL 198

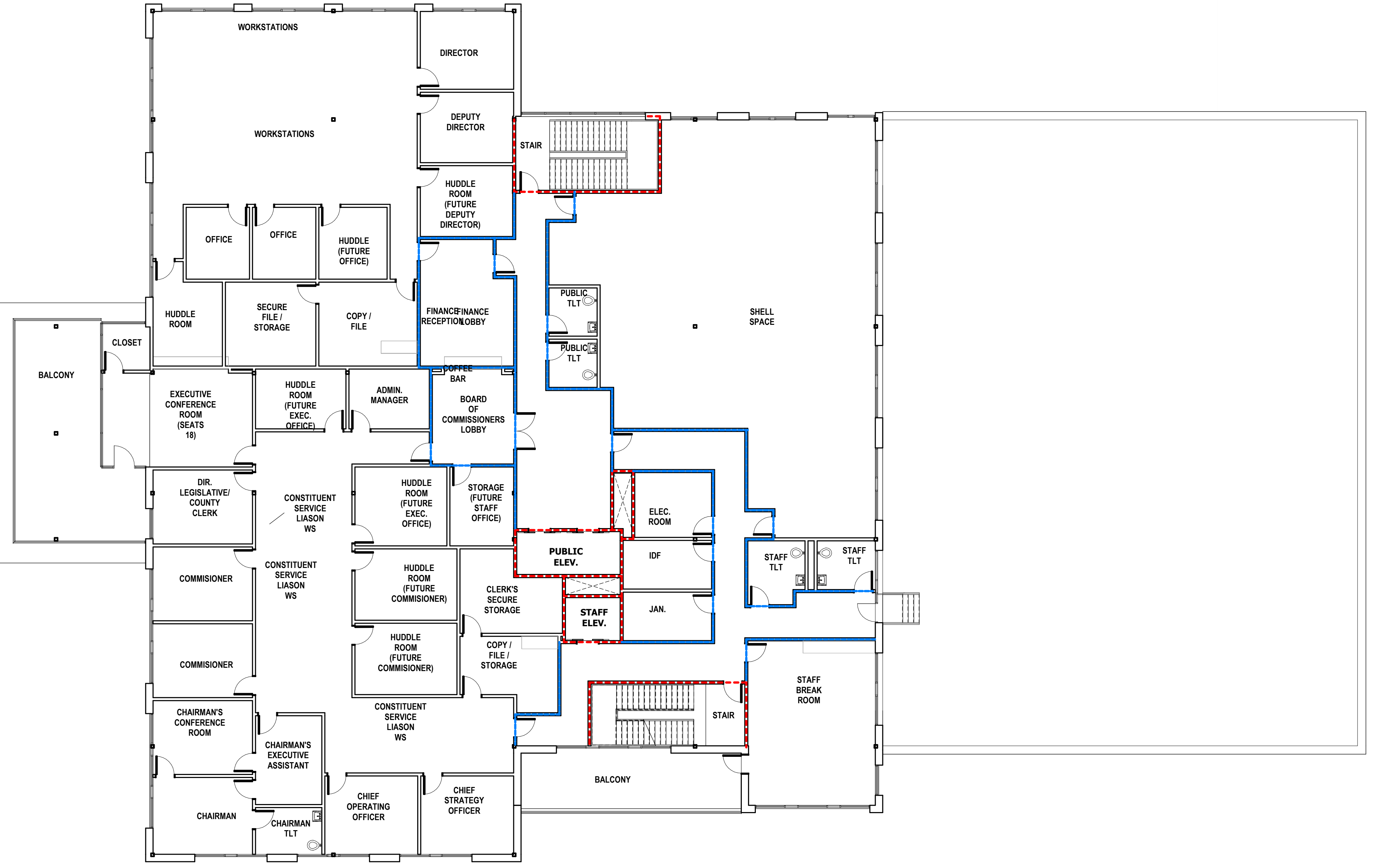
BUILDING DATA
OCCUPANCY CLASSIFICATION: PRIMARY OCCUPANCY AS BUSINESS (NFPA CHPT. 6) GROUP B (IBC CHPT 3) W/ ASSEMBLY (NFPA CHPT. 6) GROUP A-3, STORAGE S-1 (IBC CHPT. 3) AS ANGLIARY
FIRE RATING CRITERIA: PRIMARY STRUCTURAL FRAME: 0 HOUR N/A
BEARING WALLS: EXTERIOR 0 HOUR N/A, INTERIOR 0 HOUR N/A
HEIGHT AND AREA LIMITS (IBC): ALLOWABLE HEIGHT PER TABLE 503.75: -FOR TYPE II-B CONSTRUCTION (B, A3,S-1) 0 HOUR N/A
MAXIMUM NUMBER OF STORIES ABOVE GRADE PLANE: -FOR OCCUPANCY 'B': 4, ACTUAL - 4; -FOR OCCUPANCY 'A-3': 3, ACTUAL - 3; -FOR OCCUPANCY 'S-1': 3, ACTUAL - 4 (ACCESSORY AREA) 0 HOUR N/A
ALLOWABLE FLOOR AREA: -REFER TO BUILDING HEIGHT AND AREA INCREASE.
ACTUAL BUILDING AREA: -FOR OCCUPANCY 'B': 121,374; -FOR OCCUPANCY 'A-3': 12,723; -FOR STORAGE: (311.1.1 ACCESSORY STORAGE SPACES A ROOM OR SPACE USED FOR STORAGE PURPOSES THAT IS ACCESSORY TO ANOTHER OCCUPANCY SHALL BE CLASSIFIED AS PART OF THAT OCCUPANCY)
FIRE ALARM - YES
BUILDING AREAS (IBC): LEVEL 100 = 53202 GSF, LEVEL 200 = 34726 GSF, LEVEL 300 = 25484 GSF, LEVEL 400 = 21156 GSF, TOTAL = 134,568 GSF
BUILDING OCCUPANCY: LEVEL 100 = 1096 PERSONS, LEVEL 200 = 295 PERSONS, LEVEL 300 = 485 PERSONS, LEVEL 400 = 198 PERSONS, TOTAL = 2,074 PERSONS
CORRIDORS AND STAIRWAYS AND ENCLOSURE FOR EXIT RAMPS AND EXIT PASSAGeways: INTERIOR EXIT STAIRWAYS AND ENCLOSURE FOR EXIT RAMPS AND EXIT PASSAGeways: B, C, S-2, A-3
ROOMS AND ENCLOSED SPACES: C, C, C, C
ELEVATOR SHAFTS & ENCLOSURES: 2 HOUR U415
ELEVATOR SHAFT AND CEILING FINISH REQUIREMENTS (IBC TABLE 803.13):
OCCUPANCY SEPARATIONS (IBC TABLE 508.3.3): B TO A = 1 HRS, B TO S-1 = NO SEPARATION REQUIREMENT

APPLICABLE CODES
2018 INTERNATIONAL BUILDING CODE WITH GEORGIA AMENDMENTS (2020, 2022)
2018 INTERNATIONAL FIRE CODE WITH GEORGIA AMENDMENTS (2020,2022)
2018 INTERNATIONAL PLUMBING CODE WITH GEORGIA AMENDMENTS (2020,2022)
2018 INTERNATIONAL MECHANICAL CODE WITH GEORGIA AMENDMENTS (2020)
2018 INTERNATIONAL FUEL GAS CODE WITH GEORGIA AMENDMENTS (2020,2022)
2020 NATIONAL ELECTRICAL CODE WITH GEORGIA AMENDMENTS (2021)
2015 INTERNATIONAL ENERGY CONSERVATION CODE WITH GEORGIA SUPPLEMENTS AND AMENDMENTS (2020,2022)
2018 NFPA 101, LIFE SAFETY CODE WITH GEORGIA AMENDMENTS (2020,2022)
2019 NFPA 72, NATIONAL FIRE ALARM & SIGNALING CODE WITH GEORGIA AMENDMENTS (2020,2022)
2019 NFPA 13, STANDARD FOR THE INSTALLATION OF SPRINKLER SYSTEMS WITH GEORGIA AMENDMENTS (2020,2022)
2010 ADA STANDARDS, PER RULES AND REGULATIONS OF THE SAFETY FIRE COMMISSIONER 120-3-20A

LIFE SAFETY PLAN LEGEND
SEPARATION PER IBC CHAPTER 5: 2-HOUR RATED PARTITION, 1-HOUR RATED PARTITION, SMOKE BARRIER (NON FIRE RATED), NON-RATED PARTITION
EXTINGUISHER LOCATION PER NFPA 10: FIRE EXTINGUISHER IN RECESSED CABINET, BRACKET MOUNTED FIRE EXTINGUISHER
CAPACITY PER LSC 7.3.3.1: STAIRS = 0.37 PERSON, DOORS = 0.21 PERSON, 32"W DOOR = 30" CLR = 150 CAPACITY, 36"W DOOR = 34" CLR = 170 CAPACITY, 42"W DOOR = 40" CLR = 200 CAPACITY, 48"W DOOR = 46" CLR = 230 CAPACITY, 68"W DOOR = 64" CLR = 320 CAPACITY, 72"W DOOR = 68" CLR = 340 CAPACITY, 96"W DOOR = 92" CLR = 460 CAPACITY
DOORS PER IBC 715.4: EXIT SIGNAGE (SHADING INDICATES FACE OF SIGN; ARROW SHOWS INDICATES DIRECTION)
EXIT SIGNS PER IBC 701.11
OCCUPANCY TYPE LEGEND: ASSEMBLY (A-3), BUSINESS (B), BUSINESS (B), COLLABORATION ROOMS, STORAGE (S-1)
OCCUPANCY PER LSC 7.3.1.2 PER GEORGIA AMENDMENTS TO THE IBC: AREA SF / OCCUPANT LOAD FACTOR = OCCUPANCY COUNT (REFER TO OCCUPANCY SCHEDULE FOR ROOM OCCUPANCY CALCULATIONS), ACCESSORY STORAGE AREAS, MECHANICAL, ELECTRICAL ROOMS = 500 GSF/PERSON, ASSEMBLY (CONCENTRATED) = 7 NSF/PERSON, ASSEMBLY (UNCONCENTRATED) = 15 NSF/PERSON, CLASSROOM/TRAINING = 20 NSF/PERSON, BUSINESS AREAS = 150 GSF/PERSON
ALLOWABLE DISTANCE PER LSC 12.2.6: TRAVEL DISTANCE LIMIT - GROUP A3: MAX. 250 FT. SPRINKLERED, GROUP B: MAX. 300 FT. SPRINKLERED, COMMON PATH LIMIT - GROUP A-3: 20 FT. SPRINKLERED, ~50 PERSONS: 50 FT. SPRINKLERED, GROUP B: MAX. 100 FT. SPRINKLERED, DEAD END LIMIT - GROUP A-3: 20 FT. SPRINKLERED, GROUP B: MAX. 50 FT. SPRINKLERED, PATH OF EGRESS WITHIN BUILDING, TRAVEL DISTANCE & COMMON PATH (SEE NOTES ON PLANS), NUMBER OF EXITS PER IBC 1015 & LSC 7.4.1.2: ACTUAL EGRESS COUNT, EGRESS CAPACITY OF STAIR, EGRESS CAPACITY OF EXIT

PLUMBING FIXTURE REQUIREMENTS
OCCUPANCY WATER CLOSETS LAVATORIES DRINKING FOUNTAINS SERVICE SINK
ASSEMBLY A-3 1 PER 125 (MALE) 1 PER 200 1 PER 200 1
1 PER 65 (FEMALE)
BUSINESS 1 PER 25 FOR THE FIRST 50 AND 1 PER 50 FOR THE REMAINDER EXCEEDING 50 1 PER 40 FOR THE FIRST 80 AND 1 PER 80 FOR THE REMAINDER EXCEEDING 80 1 PER 100 1

PLUMBING FIXTURE COUNT: (TOTAL OCCUPANCY 2,069)
OCCUPANCY WATER CLOSETS LAVATORIES DRINKING FOUNTAINS SERVICE SINK
ASSEMBLY A-3 1145 PERSONS M.573, F.573 REQUIRED PROVIDED REQUIRED PROVIDED REQUIRED PROVIDED REQUIRED PROVIDED
BUSINESS 929 PERSONS M.465, F.465 REQUIRED PROVIDED REQUIRED PROVIDED REQUIRED PROVIDED REQUIRED PROVIDED
TOTAL (BUSINESS + ASSEMBLY) 16 20 19 29 10 10 10 25 25 14 16 2 4
FAMILY /ASSISTED USE RESTROOMS UNISEX UNISEX UNISEX UNISEX 1 4 1 4



208 Pirke Ferry Road, Suite C
Cumming, GA 30040



ROCKDALE COUNTY JUDICIAL AND ADMINISTRATIVE COMPLEX
ADMINISTRATION BUILDING - PHASE 1 SCHEMATIC DESIGN
922 COURT STREET
CONYERS, GEORGIA 30012

PRINT RECORD
No. DATE DESCRIPTION
1 02/08/2024 SD Package

Drawn By: Author
Checked By: Checker
Date: 02/08/2024
Job No.: 23.0002839.000

Sheet Title
LIFE SAFETY PLAN - THIRD LEVEL

Sheet No.
LS-1.04
NOT FOR CONSTRUCTION

03 THIRD LEVEL - LIFE SAFETY
3/32" = 1'-0"

