

# Exhibit #2

# DENALI

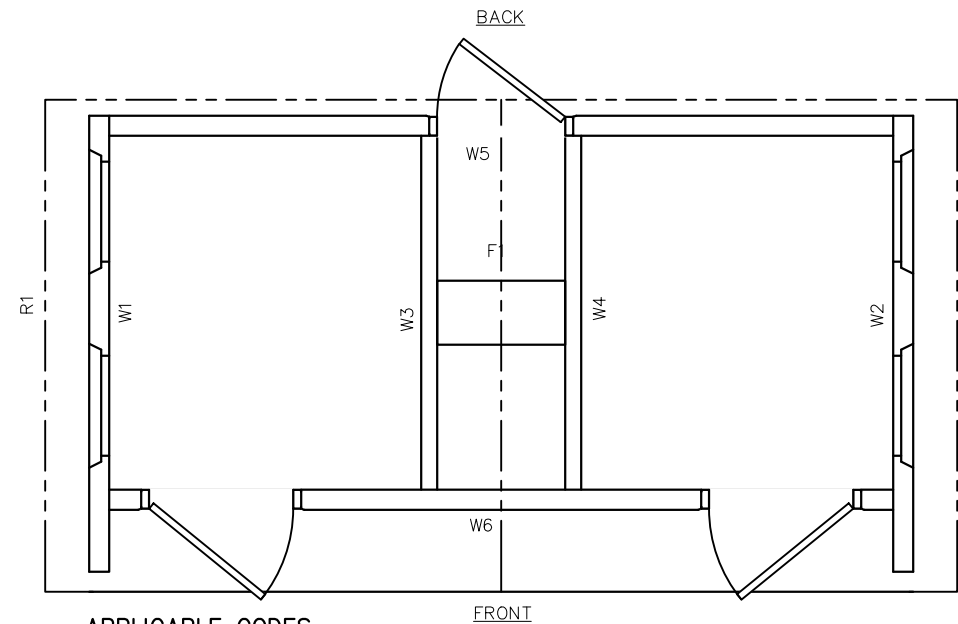
## PANEL MARK NO. KEY PLAN

### NOTES

- BUILDING IS DESIGNED TO COMPLY WITH THE 2012 INTERNATIONAL BUILDING CODE (IBC).
- DESIGN COMPLIES WITH THE PROVISIONS OF THE 2012 IBC CODE FOR THE FOLLOWING LOADS:  
GROUND SNOW LOAD = 250 PSF  
FLOOR LOAD = 400 PSF  
IBC DESIGN SPECTRAL RESPONSE  $S_s = 0.411$ ,  $S_1 = 0.132$   
SITE CLASS D  
SEISMIC USE GROUP: II  
SEISMIC DESIGN CATEGORY: E  
BEARING WALL SYSTEM  $R = 4.0$   
BASIC WIND SPEED = 150 MPH (3-SECOND GUST)  
WIND EXPOSURE C, I = 1.0
- BUILDING TYPE: IBC TYPE V-B  
OCCUPANCY: B  
EXTERIOR WALLS: 1-HR RATED PER IBC TABLE 721.1(2), ITEM 4-1.1  
MINIMUM FIRE SEPARATION DISTANCE: 10 FEET
- CONCRETE STRENGTH  $f'_{ci} = 2500$  PSI INITIAL  $f'_{c} = 5000$  PSI  
FINAL AIR ENTRAINMENT  $6\% \pm 1\ 1/2\%$  IN PLASTIC CONCRETE.  
REINFORCING STEEL: GRADE 60,  $F_y = 60$  KSI  
MINIMUM LAP 18" AT SPLICES. TIE BARS WITH DOUBLE ANNEALED 16GA IRON WIRE. REINFORCING TO BE CENTERED IN PANEL UNO. WELDED WIRE FABRIC(W.W.F.): 4x4xW6.5xW6.5,  $F_y=65$  KSI (OR EQUIVAL). COMPLY WITH ASTM A82, SMOOTH WIRE, MIN. LAP 2 SQUARES
- EMBEDDED ITEMS IDENTIFIED ON DRAWINGS(i.e. PS-2, R301) REFER TO CXT STANDARD EMBEDMENT CATALOG.
- BACK OF PANELS TO HAVE SMOOTH TROWEL FINISH U.N.O. ALL SURFACES TO BE TEXTURED ARE NOTED ON PANEL DWG'S
- REFER TO SEPARATE CXT INCORPORATED SPECIFICATIONS COVERING DESIGN, MATERIALS, PRODUCTION, AND INSTALLATION CRITERIA FOR SPECIFIC STYLE OF BUILDING.
- ADEQUATE PLUMBING FACILITIES MUST BE PROVIDED IN ACCORDANCE WITH 2012 IBC SECTION 2902 (NOT BY CXT)

MANUFACTURED BY:  
CXT INC. (WV)  
362 WAVERLY ROAD  
WILLIAMSTOWN, WV 26187

SITE ADDRESS:  
COSTLEY MILL PARK  
2455 COSTLEY MILL ROAD,  
CONYERS, GA 30013



### APPLICABLE CODES

GEORGIA STATE MINIMUM STANDARDS WITH AMENDMENTS (EFFECTIVE JAN 1, 2015)

- 2012 INTERNATIONAL BUILDING CODE WITH GEORGIA AMENDMENTS (2014 & 2015)
- 2012 INTERNATIONAL FIRE CODE WITH GEORGIA AMENDMENTS (2014 & 2015)
- 2012 INTERNATIONAL PLUMBING CODE WITH GEORGIA AMENDMENTS (2014 & 2015)
- 2014 NATIONAL ELECTRIC CODE
- 2009 INTERNATIONAL ENERGY CONSERVATION CODE WITH GEORGIA SUPPLEMENTS AND AMENDMENTS (2011) (2012)

### RULES OF SAFETY FIRE COMMISSIONER

- \*NFPA LIFE SAFETY CODE 2018 EDITION WITH GEORGIA AMENDMENTS
- \*ACCESSIBILITY RULES 2010 EDITION

### SPECIAL CONDITIONS AND/OR LIMITATIONS

ACCESSIBILITY TO THIS BUILDING, INCLUDING PARKING IS TO BE PROVIDED BY OTHERS AND CONSTRUCTED IN ACCORDANCE WITH ALL LOCAL BUILDING CODES

### INDEX OF DRAWINGS

NO.	TITLE
DN-01	COVER SHEET
DN-02	HANDLING INSTRUCTIONS
DN-03	FLOOR PLAN
DN-04	BUILDING ELEVATIONS
DN-05	INTERIOR ELEVATIONS
DN-06	FINISH DETAILS
DN-07	CASTING DETAILS
DN-08	WALL PANEL MARK W1
DN-09	WALL PANEL MARK W2
DN-10	WALL PANEL MARK W3
DN-11	WALL PANEL MARK W4
DN-12	WALL PANEL MARK W5
DN-13	WALL PANEL MARK W6
DN-14	ROOF SLAB MARK R1
DN-15	ROOF SLAB MARK R2
DN-16	FLOOR SLAB MARK F1
DN-17	FOUNDATION DETAIL
DN-18	UNDERGROUND PIPING LAYOUT
DN-19	PLUMBING PLANS, NOTES
DN-20	PLUMBING SCHEDULE
DN-21	ELECTRICAL NOTES & SCHEDULE
DN-22	ELECTRICAL PLAN, LEGEND & NOTES
DN-23	ELECTRICAL PANEL ASSEMBLY DETAIL
DN-24	B.O.M.

CXT INCORPORATED  
CONTROLLED COPY  
IF THIS STATEMENT IS NOT PRINTED  
IN RED, DOCUMENT MAY NOT BE CURRENT  
ISSUED FOR PRODUCTION BY: MICHAEL C. TOLMAN



6701 E Flamingo Ave Bldg 300 Nampa, ID 83687  
901 N. Highway 77 Hillsboro, TX 76645  
362 Waverly Road Williamstown, WV 26187

PROJECT TITLE  
**DENALI**  
BUILDING NUMBER DN-374

NOTICE  
The information contained herein is proprietary and the exclusive property of CXT Incorporated. The information may only be used by the original recipient for the purpose intended. Reproduction or distribution of this information is strictly prohibited without the prior written consent of CXT Incorporated. By allowing use of this information, CXT Incorporated grants no warranty, express or implied, including a warranty of merchantability or of fitness for a particular purpose.

REV.	DESCRIPTION	APPROVAL	DATE
SCALE	N/A	DATE	5/18/22
DRAWN	C.WISSER	FILE NO.	DN-374
CHECKED	MCT	PLOT	N/A

**COVER SHEET**

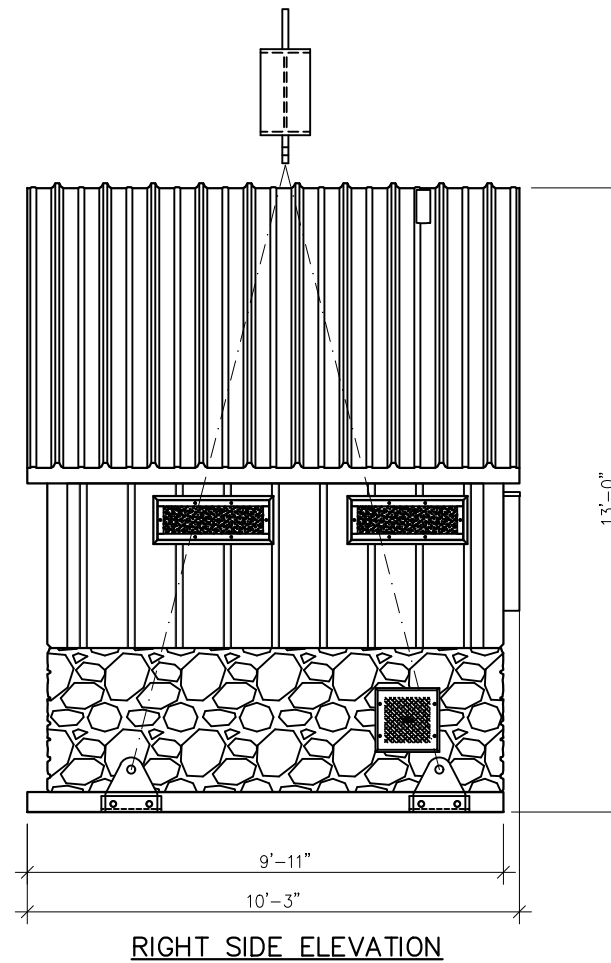
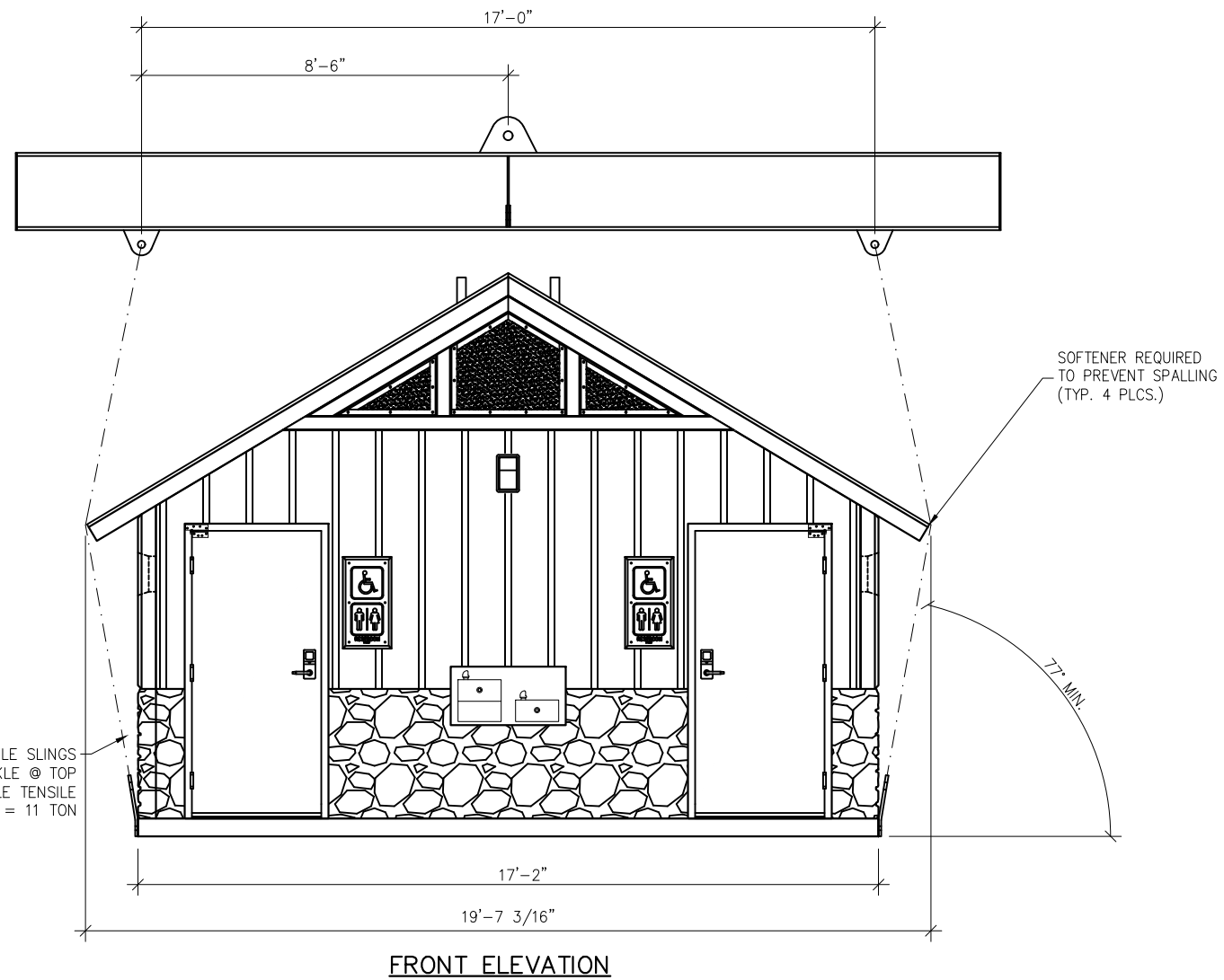
DWG NO. <b>DN-01</b>	SHEET 1 24	REV. 0
-------------------------	------------------	-----------

CASTING TOLERANCES:

OVERALL LENGTH OR WIDTH	10 FT OR UNDER = $\pm 1/8"$
	10 TO 20 FT = $\pm 1/8"$ , -3/16"
	20 TO 40 FT = $\pm 1/4"$
TOTAL THICKNESS	= -1/8, +1/4
VARIATION FROM SQUARE	= $\pm 1/8$ PER 6 FT OF DIAGONAL
LOCAL SMOOTHNESS	= 1/4" IN 10 FT
SWEEP	= $\pm 1/4"$
POSITION OF TENDONS	= $\pm 1/4"$
POSITION OF BLOCKOUTS	= $\pm 1/4"$
SIZE OF BLOCKOUTS	= $\pm 1/4"$
POSITION OF EMBEDS	= $\pm 1/4"$
TIPPING AND FLUSHNESS OF PLATES	= +1/16, -1/4
BOWING	= LENGTH/360
END SQUARENESS	= $\pm 1/8"$

**GEORGIA STATE TAG, APPROVAL, AND PE DRAWINGS (FCC ONLY) REQUIRED**

WALL TEXTURE:	BOARD & BATT / NAPA VALLEY
WALL COLOR:	RICH EARTH / MOUNTAIN BLEND
ROOF TEXTURE:	RIBBED METAL
ROOF COLOR:	HUNTER GREEN
TRIM PAINT:	DTM ALKYD ENAMEL BROWN
SEALER:	STANDARD
PACKAGE:	STANDARD



CXT INCORPORATED  
CONTROLLED COPY  
IF THIS STATEMENT IS NOT PRINTED  
IN RED, DOCUMENT MAY NOT BE CURRENT  
ISSUED FOR PRODUCTION BY: MICHAEL C. TOLMAN



6701 E Flamingo Ave Bldg 300 Nampa, ID 83687  
901 N. Highway 77 Hillsboro, TX 76645  
362 Waverly Road Williamstown, WV 26187

PROJECT TITLE  
**DENALI**  
BUILDING NUMBER DN-374

NOTICE

The information contained herein is proprietary and the exclusive property of CXT Incorporated. The information may only be used by the original recipient for the purpose intended. Reproduction or distribution of this information is strictly prohibited without the prior written consent of CXT Incorporated. By allowing use of this information, CXT Incorporated grants no warranty, express or implied, including a warranty of merchantability or of fitness for a particular purpose.

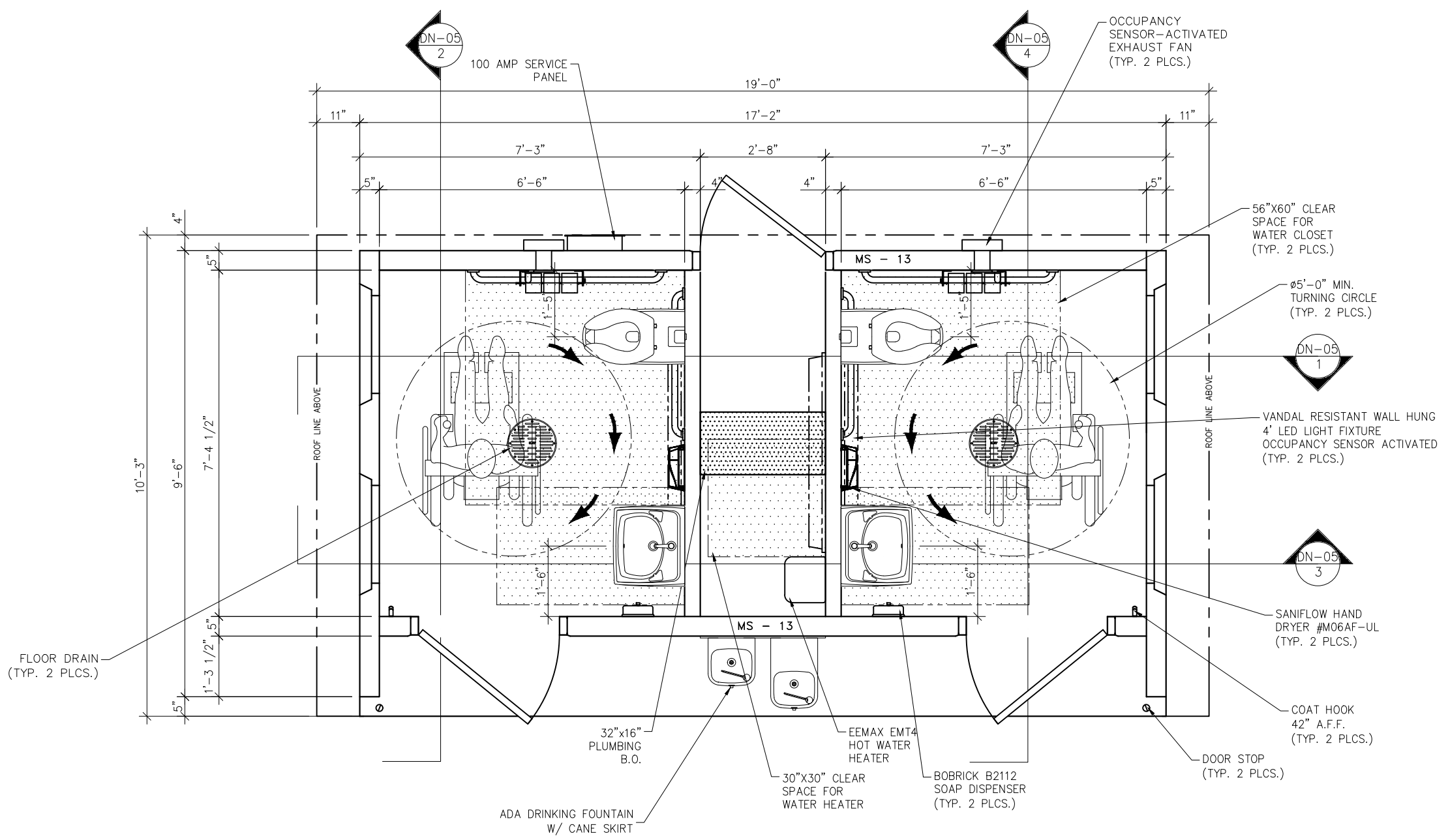
CXT Incorporated

REV.	DESCRIPTION	DATE	APPROVAL	DATE
SCALE	N/A	DATE		5/18/22
DRAWN	C.WISSER	FILE NO.	DN-374	
CHECKED	MCT	PLOT	N/A	

HANDLING INSTRUCTIONS			
DWG NO.	SHEET	REV.	
DN-02	2 24	0	0

NOTES:  
1. WEIGHT IS APPROXIMATE.

SHIPPING WEIGHTS AND DIMENSIONS				
SECTION	WEIGHT	LENGTH	WIDTH	HEIGHT
A (BACK)	56,200	19'-8"	10'-3"	13'-0"



**CXT INCORPORATED  
 CONTROLLED COPY**  
 IF THIS STATEMENT IS NOT PRINTED  
 IN RED, DOCUMENT MAY NOT BE CURRENT  
 ISSUED FOR PRODUCTION BY: MICHAEL C. TOLMAN



6701 E Flamingo Ave Bldg 300 Nampa, ID 83687  
 901 N. Highway 77 Hillsboro, TX 76645  
 362 Waverly Road Williamstown, WV 26187

PROJECT TITLE  
**DENALI**  
 BUILDING NUMBER DN-374

NOTICE

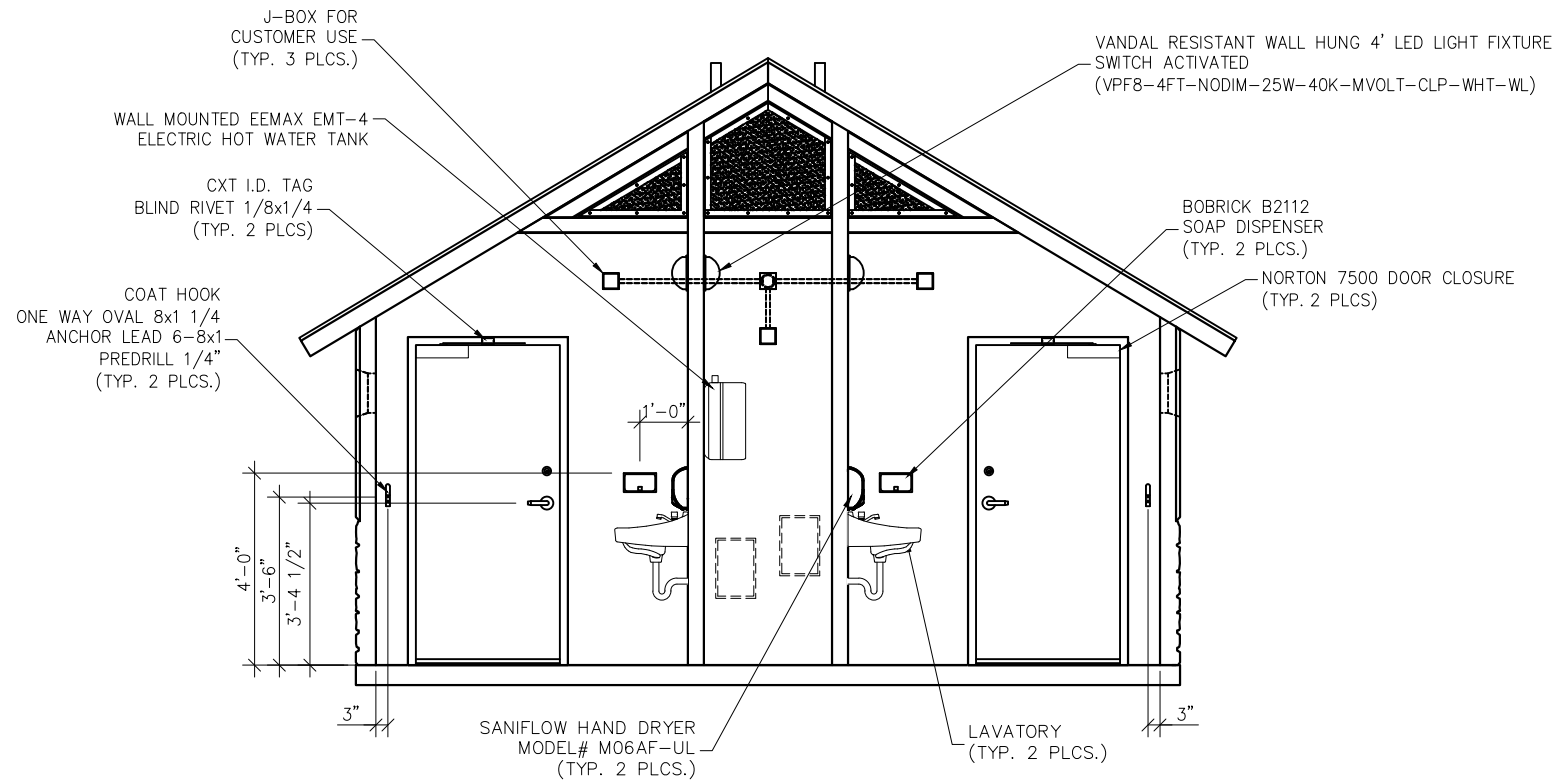
The information contained herein is proprietary and the exclusive property of CXT Incorporated. The information may only be used by the original recipient for the purpose intended. Reproduction or distribution of this information is strictly prohibited without the prior written consent of CXT Incorporated. By allowing use of this information, CXT Incorporated grants no warranty, express or implied, including a warranty of merchantability or of fitness for a particular purpose.

CXT Incorporated

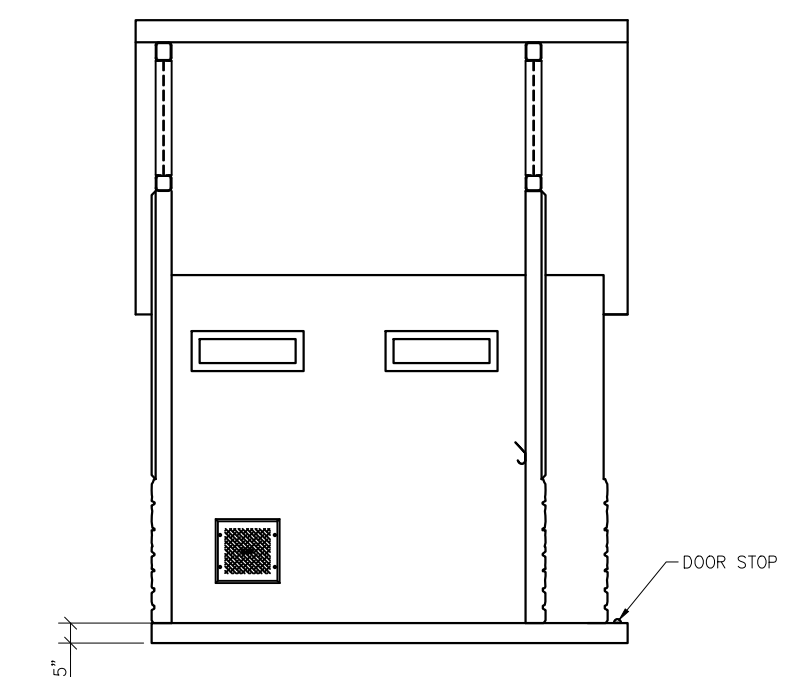
REV.	DESCRIPTION	APPROVAL	DATE
SCALE	3/8"=1'-0"	DATE	5/18/22
DRAWN	C.WISSER	FILE NO.	DN-374
CHECKED	MCT	PLOT	32

<b>FLOOR PLAN</b>		
DWG NO. <b>DN-03</b>	SHEET 3 24	REV. 0

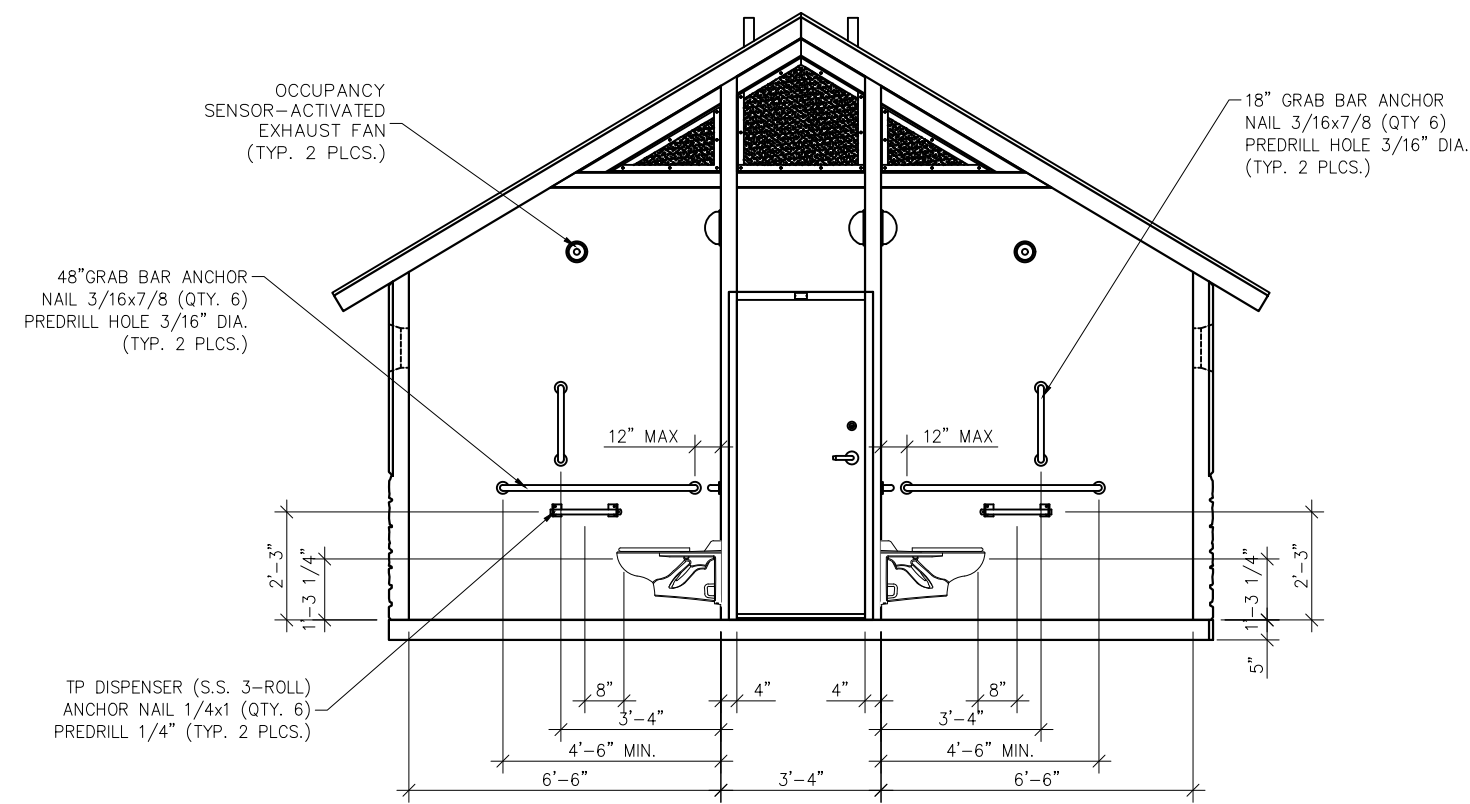




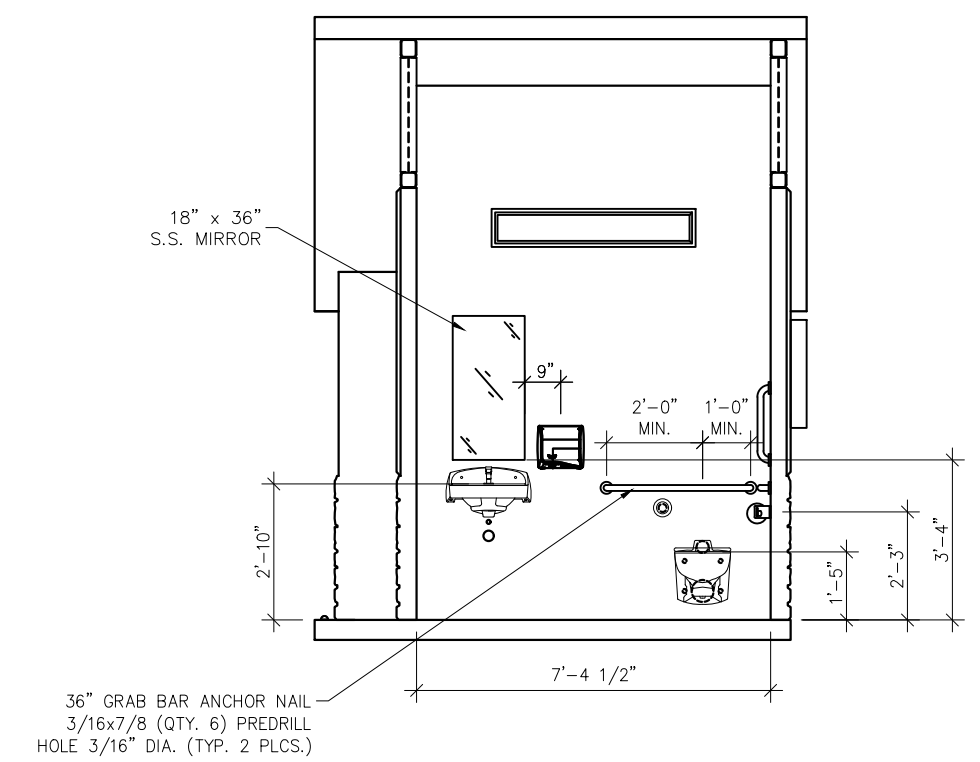
1 INTERIOR ELEVATION - FRONT WALL VIEW



2 INTERIOR ELEVATION - EXTERIOR WALL VIEW



3 INTERIOR ELEVATION - BACK WALL VIEW



4 INTERIOR ELEVATION - INTERIOR WALL VIEW

EMBEDDED MATERIALS	
ITEM	QTY
18" GRAB BAR	2
36" GRAB BAR	2
48" GRAB BAR	2
TOILET PAPER DISPENSER	2
TOILET PAPER ROLL	6
COAT HOOK	2
DOOR STOP	2
ONE WAY OVAL 8x1 1/4"	4
ANCHOR LEAD 6-8x1	4
CXT I.D. TAG	2
ANCHOR NAIL 1/4x1	12
ANCHOR NAIL 1/4x3/4	8
BOBRICK B2112 SOAP DISPENSER	2
HAND DRYER	2
NORTON DOOR CLOSURE	2
CU. FT. CONC.	SQ. FT. W.W.F.
APPROXIMATE WEIGHT	

CXT INCORPORATED  
CONTROLLED COPY  
IF THIS STATEMENT IS NOT PRINTED  
IN RED, DOCUMENT MAY NOT BE CURRENT  
ISSUED FOR PRODUCTION BY: MICHAEL C. TOLMAN

**CXT**  
Precast Products  
6701 E Flamingo Ave Bldg 300 Nampa, ID 83687  
901 N. Highway 77 Hillsboro, TX 76645  
362 Waverly Road Williamstown, WV 26187

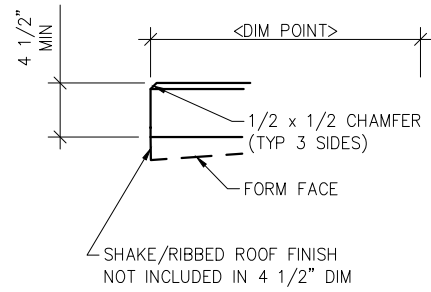
PROJECT TITLE  
**DENALI**  
BUILDING NUMBER DN-374

NOTICE  
The information contained herein is proprietary and the exclusive property of CXT Incorporated. The information may only be used by the original recipient for the purpose intended. Reproduction or distribution of this information is strictly prohibited without the prior written consent of CXT Incorporated. By allowing use of this information, CXT Incorporated grants no warranty, express or implied, including a warranty of merchantability or of fitness for a particular purpose.  
CXT Incorporated

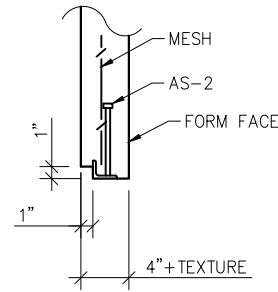
REV.	DESCRIPTION	APPROVAL	DATE
SCALE	1/4"=1'-0"	DATE	5/18/22
DRAWN	C.WISSER	FILE NO.	DN-374
CHECKED	MCT	PLOT	48

INTERIOR ELEVATIONS  
DWG NO. DN-05 SHEET 5 REV. 0  
24

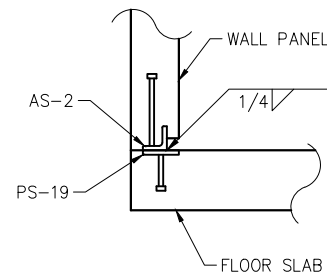




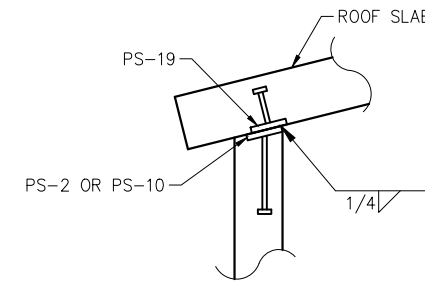
1 TYPICAL ROOF SLAB EDGE  
SCALE: 3/4"=1'-0"



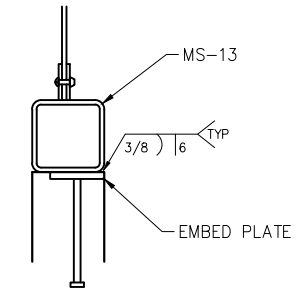
2 AS-2 CAST DETAIL  
SCALE: 3/4"=1'-0"



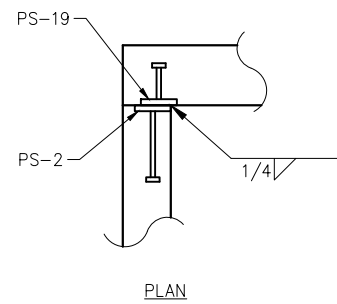
3 TYPICAL WALL TO FLOOR SLAB WELDED CONNECTION  
SCALE: 3/4"=1'-0"



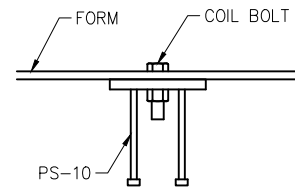
4 TYPICAL WALL TO ROOF SLAB WELDED CONNECTION  
SCALE: 3/4"=1'-0"



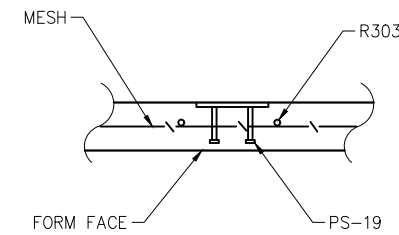
5 MS-13 WELD DETAIL  
SCALE: 3/4"=1'-0"



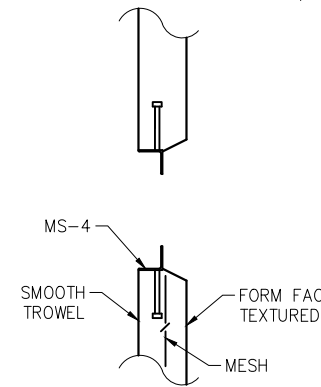
6 TYPICAL WALL TO WALL PANEL WELDED CONNECTION  
SCALE: 3/4"=1'-0"



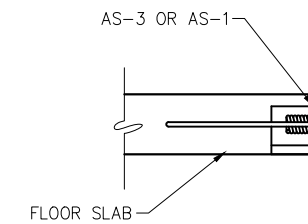
7 PS-10 CASTING DETAIL  
SCALE: 1"=1'-0"



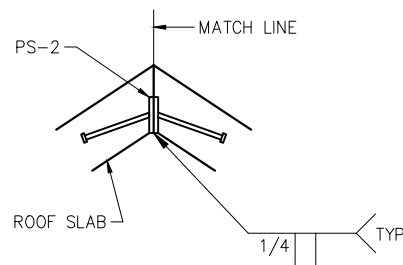
8 PS-19 CASTING DETAIL  
SCALE: 3/4"=1'-0"



9 MS-4 EMBED CASTING DETAIL  
SCALE: 3/4"=1'-0"



10 FLOOR LIFT PLATE DETAIL  
SCALE: 3/4"=1'-0"



11 ROOF PEAK WELDMENT DETAIL  
SCALE: 3/4"=1'-0"

CXT INCORPORATED  
CONTROLLED COPY  
IF THIS STATEMENT IS NOT PRINTED  
IN RED, DOCUMENT MAY NOT BE CURRENT  
ISSUED FOR PRODUCTION BY: MICHAEL C. TOLMAN



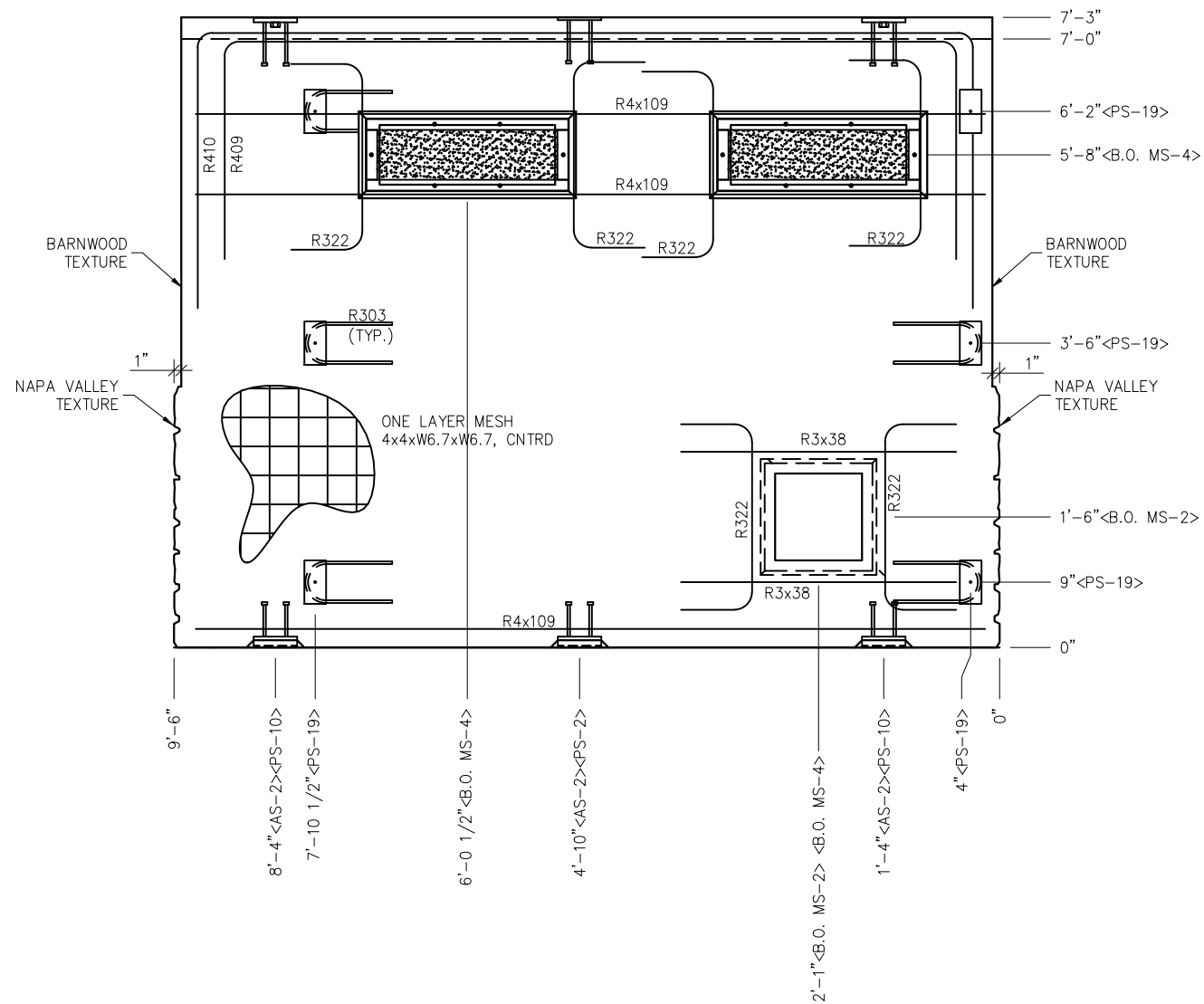
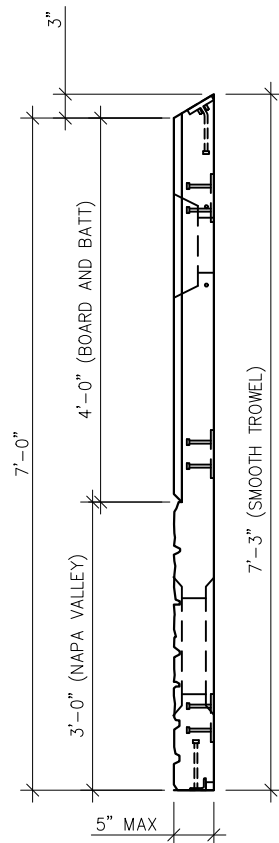
6701 E Flamingo Ave Bldg 300 Nampa, ID 83687  
901 N. Highway 77 Hillsboro, TX 76645  
362 Waverly Road Williamstown, WV 26187

PROJECT TITLE  
**DENALI**  
BUILDING NUMBER DN-374

NOTICE  
The information contained herein is proprietary and the exclusive property of CXT Incorporated. The information may only be used by the original recipient for the purpose intended. Reproduction or distribution of this information is strictly prohibited without the prior written consent of CXT Incorporated. By allowing use of this information, CXT Incorporated grants no warranty, express or implied, including a warranty of merchantability or of fitness for a particular purpose.

REV.	DESCRIPTION	DATE	APPROVAL	DATE
SCALE	AS NOTED	DATE		5/18/22
DRAWN	C.WISSER	FILE NO.	DN-374	
CHECKED	MCT	PLOT		16

CASTING DETAILS		
DWG NO.	SHEET	REV.
DN-07	7 / 24	0



- NOTES:  
 1. WALL THICKNESS = 5"  
 2. REBAR TO BE CENTERED IN PANEL

EMBEDDED MATERIALS	
ITEM	QTY
AS-2	3
PS-2	1
PS-10	2
PS-19	6
R303	5
R409	1
R410	1
R4x109	3
R322	6
R3x38	2
B.O. MS-4	2
B.O. MS-2	1

CU. FT. CONC. 23(.89)	SQ. FT. W.W.F. 68
--------------------------	----------------------

APPROXIMATE WEIGHT  
3,383

CXT INCORPORATED  
CONTROLLED COPY  
IF THIS STATEMENT IS NOT PRINTED  
IN RED, DOCUMENT MAY NOT BE CURRENT  
ISSUED FOR PRODUCTION BY: MICHAEL C. TOLMAN

**CXT**  
**Precast Products**  
 6701 E Flamingo Ave Bldg 300 Nampa, ID 83687  
 901 N. Highway 77 Hillsboro, TX 76645  
 362 Waverly Road Williamstown, WV 26187

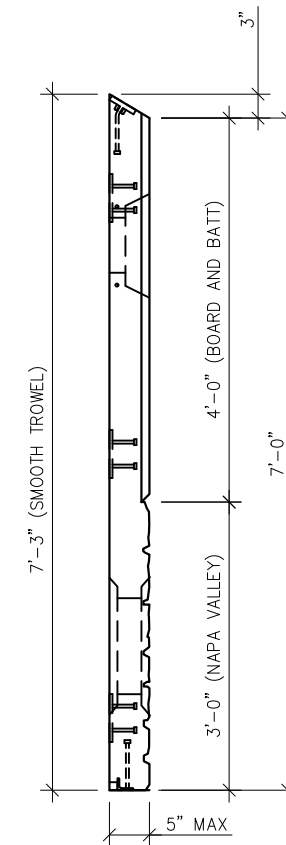
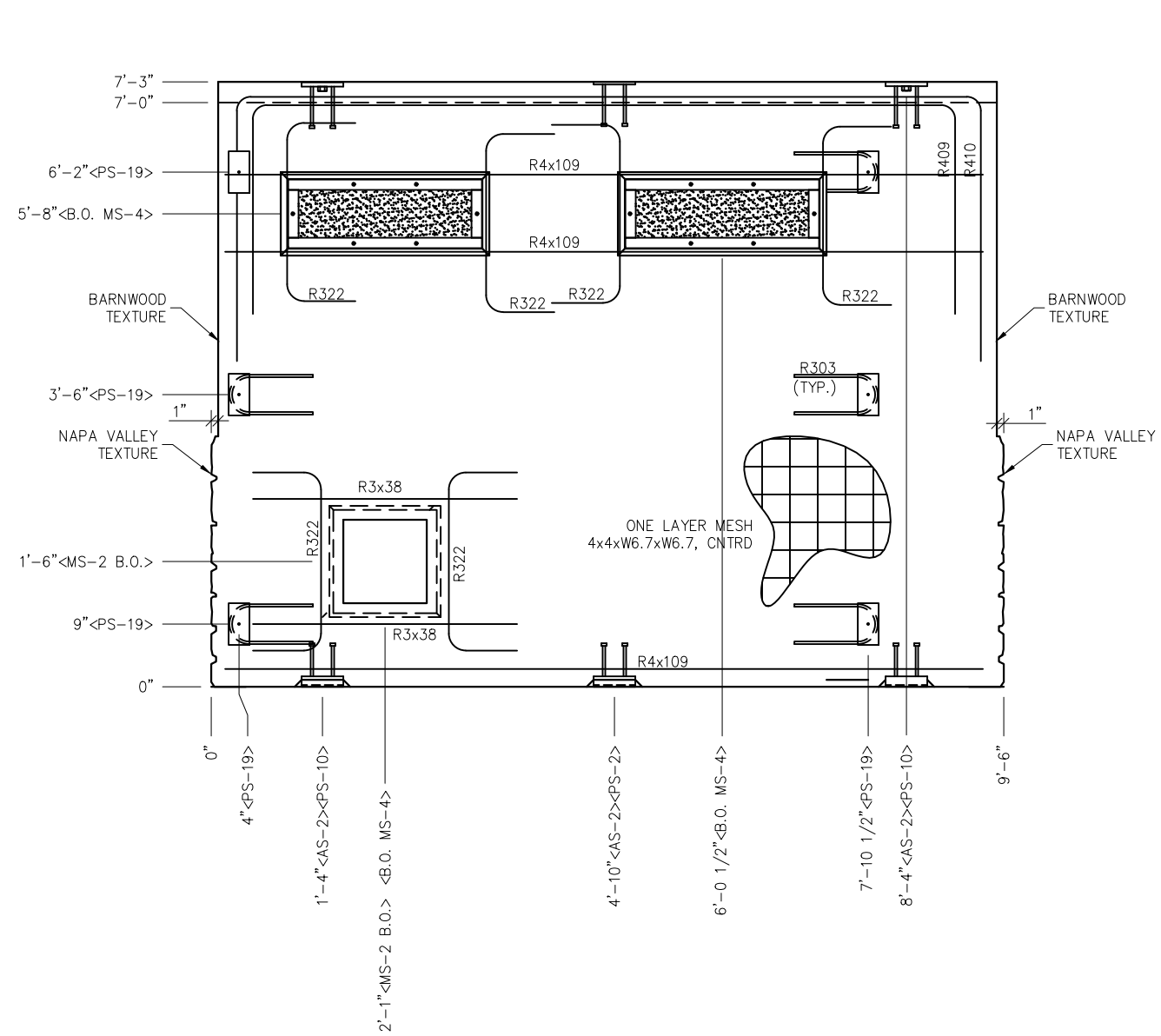
PROJECT TITLE  
**DENALI**  
 BUILDING NUMBER DN-374

NOTICE  
 The information contained herein is proprietary and the exclusive property of CXT Incorporated. The information may only be used by the original recipient for the purpose intended. Reproduction or distribution of this information is strictly prohibited without the prior written consent of CXT Incorporated. By allowing use of this information, CXT Incorporated grants no warranty, express or implied, including a warranty of merchantability or of fitness for a particular purpose.  
 CXT Incorporated

REV.	DESCRIPTION	DATE	APPROVAL	DATE
SCALE	1/2"=1'-0"	DATE		5/18/22
DRAWN	C.WISSER	FILE NO.	DN-374	
CHECKED	MCT	PLOT	24	

<b>WALL PANEL MARK W1</b>	
DWG NO. <b>DN-08</b>	REV. 8 24 0





- NOTES:  
 1. WALL THICKNESS = 5"  
 2. REBAR TO BE CENTERED IN PANEL

EMBEDDED MATERIALS	
ITEM	QTY
AS-2	3
PS-2	1
PS-10	2
PS-19	6
R303	5
R409	1
R410	1
R4x109	3
R322	6
R3x38	2
B.O. MS-4	2
B.O. MS-2	1

CU. FT. CONC. 23(.89)	SQ. FT. W.W.F. 68
--------------------------	----------------------

APPROXIMATE WEIGHT  
3383

CXT INCORPORATED  
CONTROLLED COPY  
IF THIS STATEMENT IS NOT PRINTED  
IN RED, DOCUMENT MAY NOT BE CURRENT  
ISSUED FOR PRODUCTION BY: MICHAEL C. TOLMAN



6701 E Flamingo Ave Bldg 300 Nampa, ID 83687  
 901 N. Highway 77 Hillsboro, TX 76645  
 362 Waverly Road Williamstown, WV 26187

PROJECT TITLE  
**DENALI**  
 BUILDING NUMBER DN-374

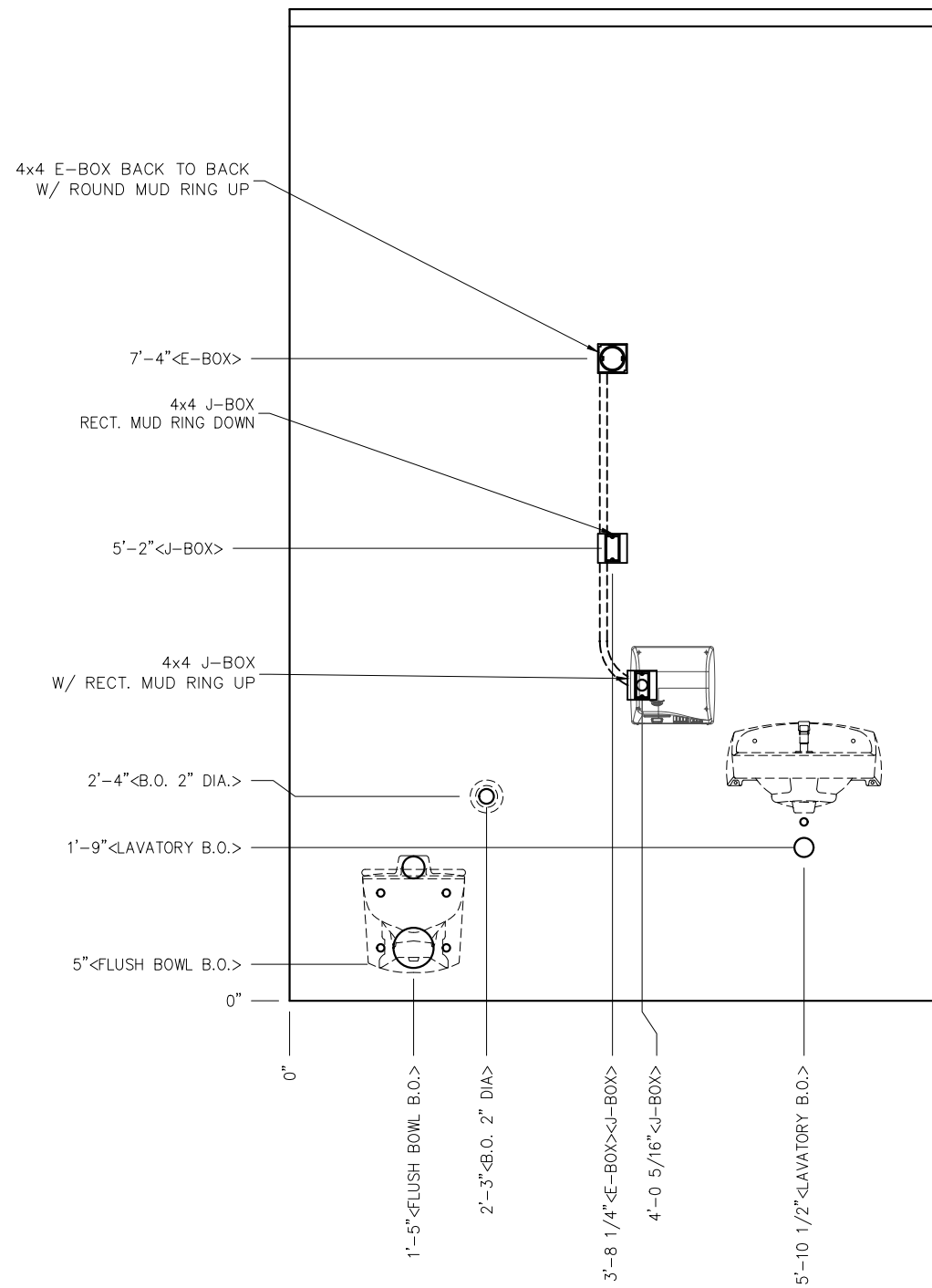
NOTICE  
 The information contained herein is proprietary and the exclusive property of CXT Incorporated. The information may only be used by the original recipient for the purpose intended. Reproduction or distribution of this information is strictly prohibited without the prior written consent of CXT Incorporated. By allowing use of this information, CXT Incorporated grants no warranty, express or implied, including a warranty of merchantability or of fitness for a particular purpose.

REV.	DESCRIPTION	DATE	APPROVAL	DATE
SCALE	1/2"=1'-0"	DATE	5/18/22	
DRAWN	C.WISSER	FILE NO.	DN-374	
CHECKED	MCT	PLOT	24	

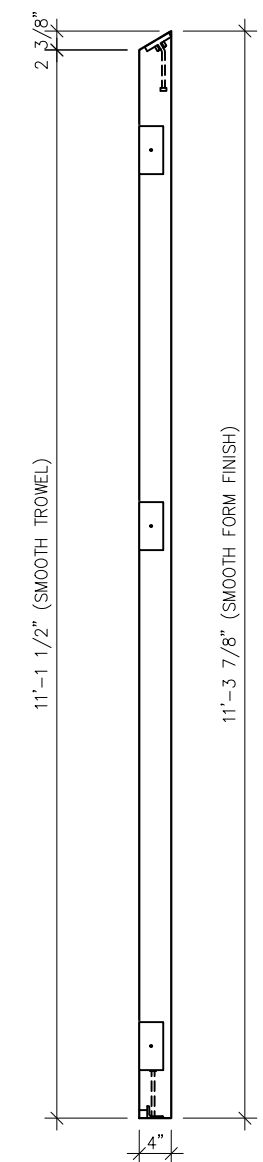
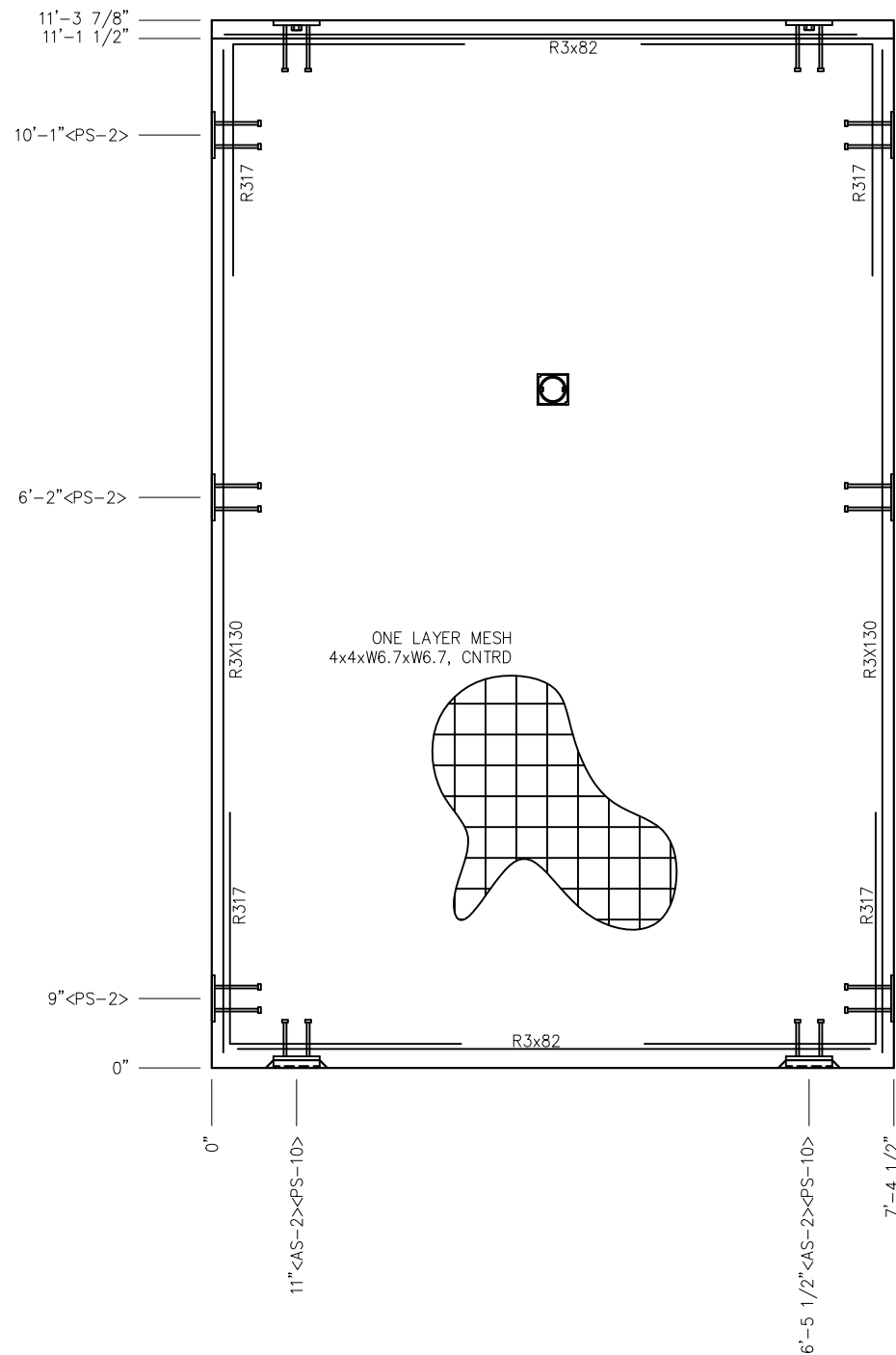
WALL PANEL  
 MARK W2

DWG NO. DN-09	SHEET 9	REV. 0
------------------	------------	-----------

### BLOCKOUT DETAIL



### EMBED DETAIL



EMBEDDED MATERIALS	
ITEM	QTY
AS-2	2
PS-2	6
PS-10	2
R317	4
R3x82	2
R3x130	4
4x4 E-BOX	2
ROUND MUD RING	1
4x4 J-BOX	2
RECTANGULAR MUD RING	2
B.O. LAVATORY	1
B.O. FLUSH BOWL	1
B.O. 2" DIAMETER	1

CU. FT. CONC.	SQ. FT. W.W.F.
27.6 (1.02)	88

APPROXIMATE WEIGHT  
4,140

**CXT INCORPORATED  
CONTROLLED COPY**  
IF THIS STATEMENT IS NOT PRINTED  
IN RED, DOCUMENT MAY NOT BE CURRENT  
ISSUED FOR PRODUCTION BY: MICHAEL C. TOLMAN



6701 E Flamingo Ave Bldg 300 Nampa, ID 83687  
901 N. Highway 77 Hillsboro, TX 76645  
362 Waverly Road Williamstown, WV 26187

PROJECT TITLE  
**DENALI**  
BUILDING NUMBER DN-374

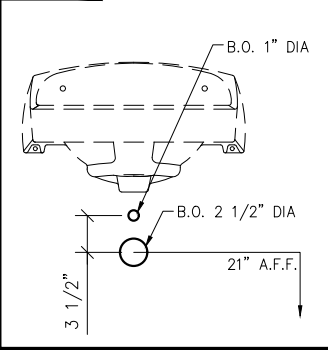
NOTICE  
The information contained herein is proprietary and the exclusive property of CXT Incorporated. The information may only be used by the original recipient for the purpose intended. Reproduction or distribution of this information is strictly prohibited without the prior written consent of CXT Incorporated. By allowing use of this information, CXT Incorporated grants no warranty, express or implied, including a warranty of merchantability or of fitness for a particular purpose.

REV.	DESCRIPTION	APPROVAL	DATE
SCALE	1/2"=1'-0"	DATE	5/18/22
DRAWN	C.WISSER	FILE NO.	DN-374
CHECKED	MCT	PLOT	24

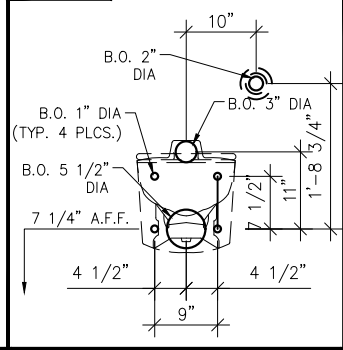
WALL PANEL  
MARK W3

DWG NO.	SHEET	REV.
DN-10	10	0
	24	

BLOCKOUT DETAIL LAVATORY DETAIL AMERICAN STANDARD 0356.421

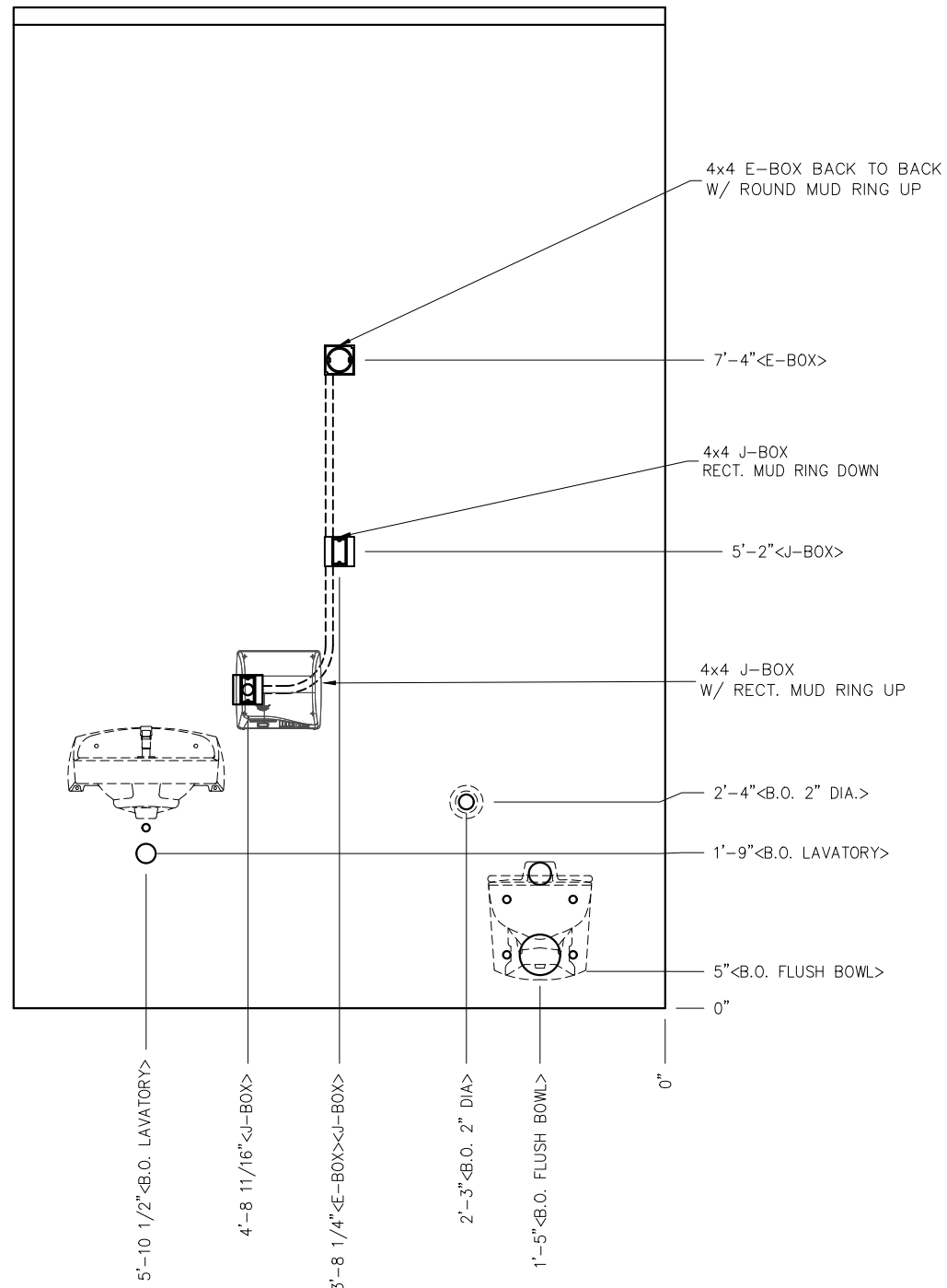


BLOCKOUT DETAIL FLUSH VALVE BOWL DETAIL AMERICAN STANDARD 0356.421

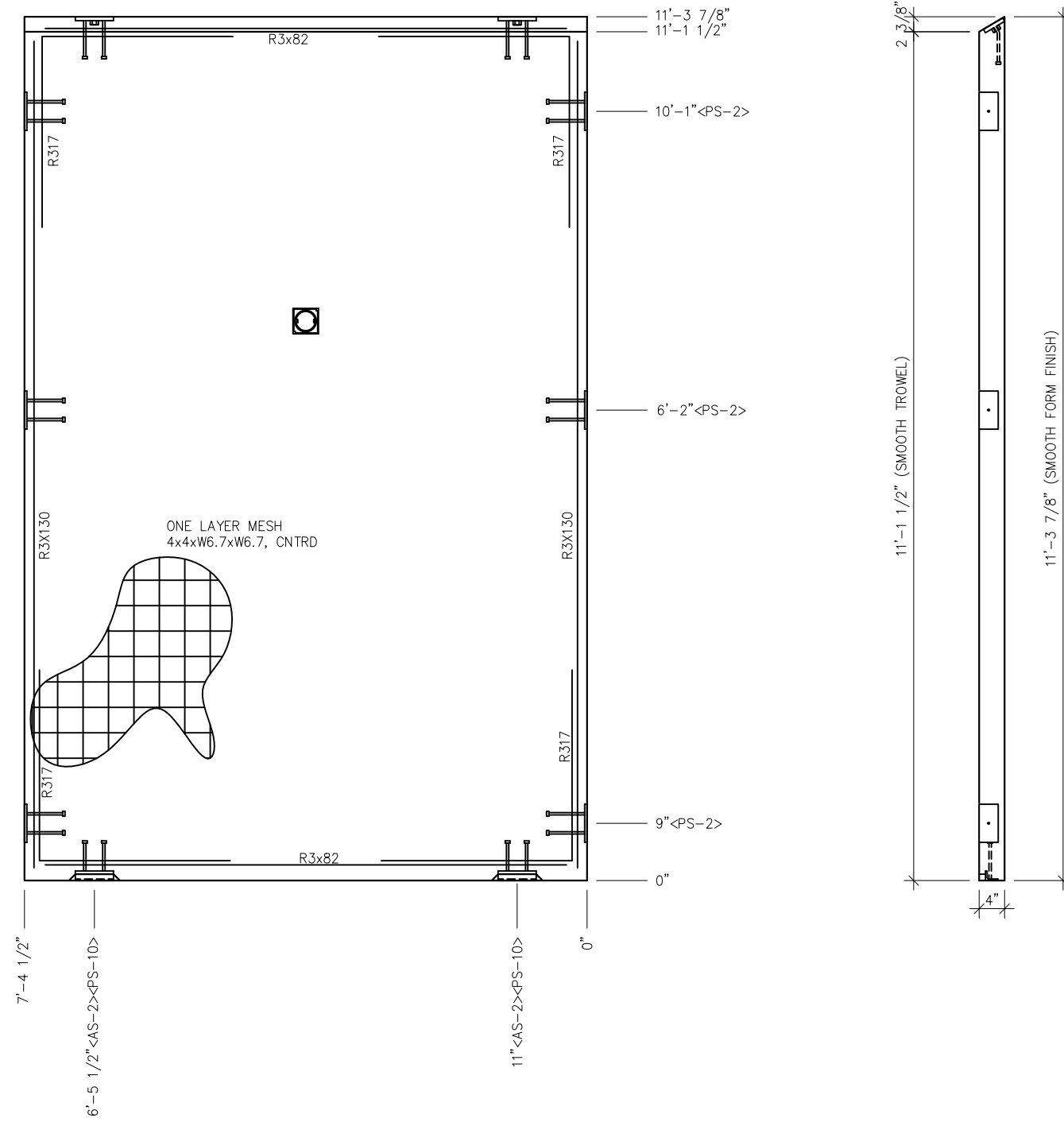


- NOTES:
1. WALL THICKNESS = 4"
  2. REINFORCING BARS R3x130 TO BE PLACED IN PAIRS ONE EACH FACE OF PANEL W/ 3/4" MIN. COVER

**BLOCKOUT DETAIL**



**EMBED DETAIL**



EMBEDDED MATERIALS	
ITEM	QTY
AS-2	2
PS-2	6
PS-10	2
R317	4
R3x82	2
R3x130	4
4x4 E-BOX	2
ROUND MUD RING	1
4x4 J-BOX	2
RECTANGULAR MUD RING	2
B.O. LAVATORY	1
B.O. FLUSH BOWL	1
B.O. 2" DIAMETER	1

CU. FT. CONC.	SQ. FT. W.W.F.
28.3 (1.05)	88

APPROXIMATE WEIGHT  
4,245

**CXT INCORPORATED  
CONTROLLED COPY**  
IF THIS STATEMENT IS NOT PRINTED  
IN RED, DOCUMENT MAY NOT BE CURRENT  
ISSUED FOR PRODUCTION BY: MICHAEL C. TOLMAN

**CXT**  
**Precast Products**  
6701 E Flamingo Ave Bldg 300 Nampa, ID 83687  
901 N. Highway 77 Hillsboro, TX 76645  
362 Waverly Road Williamstown, WV 26187

PROJECT TITLE  
**DENALI**  
BUILDING NUMBER DN-374

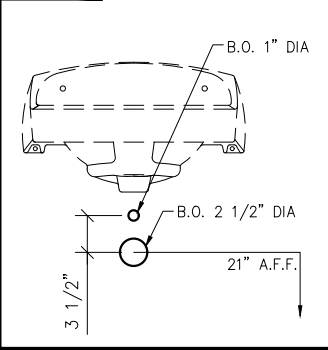
NOTICE  
The information contained herein is proprietary and the exclusive property of CXT Incorporated. The information may only be used by the original recipient for the purpose intended. Reproduction or distribution of this information is strictly prohibited without the prior written consent of CXT Incorporated. By allowing use of this information, CXT Incorporated grants no warranty, express or implied, including a warranty of merchantability or of fitness for a particular purpose.

REV.	DESCRIPTION	APPROVAL	DATE
SCALE	1/2"=1'-0"	DATE	5/18/22
DRAWN	C.WISSER	FILE NO.	DN-374
CHECKED	MCT	PLOT	24

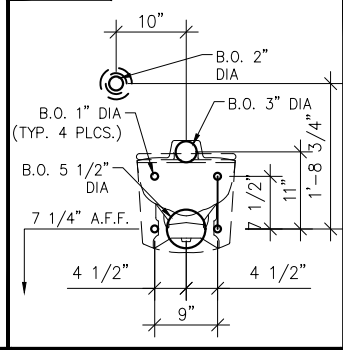
**WALL PANEL  
MARK W4**

DWG NO.	SHEET	REV.
DN-11	11	0
	24	

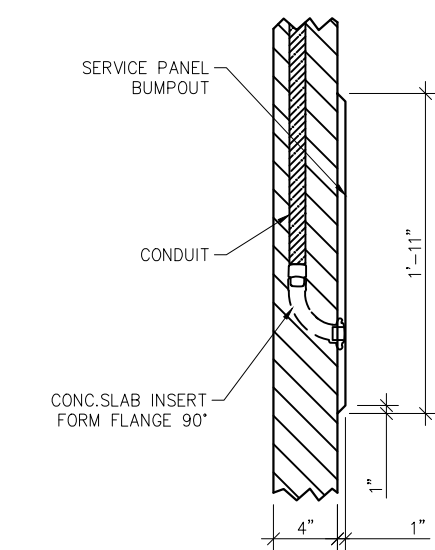
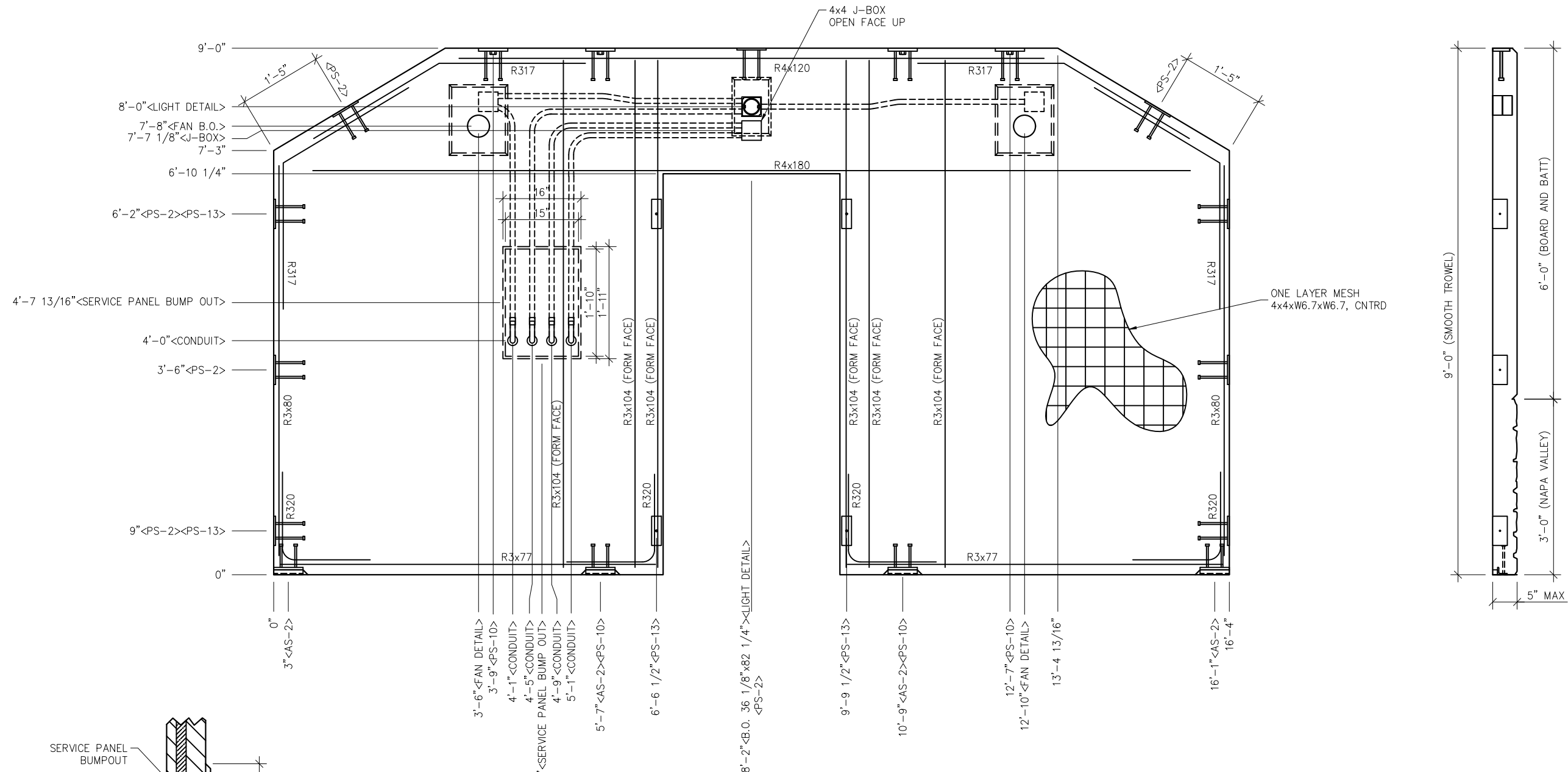
**BLOCKOUT DETAIL LAVATORY DETAIL**  
AMERICAN STANDARD 0356.421



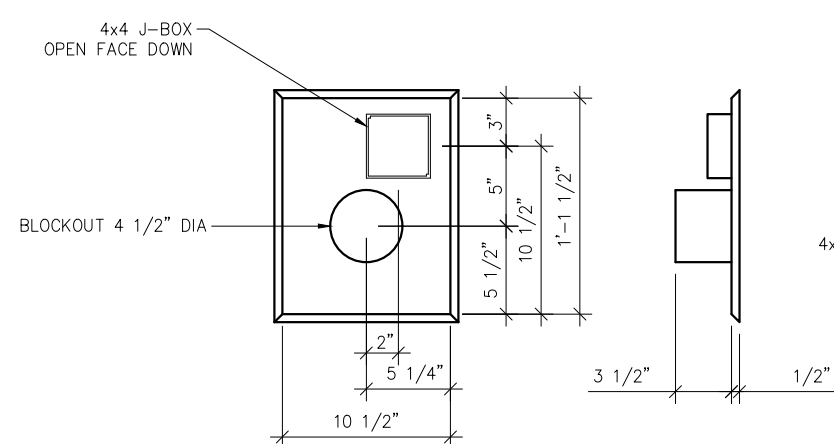
**BLOCKOUT DETAIL FLUSH VALVE BOWL DETAIL**  
AMERICAN STANDARD 0356.421



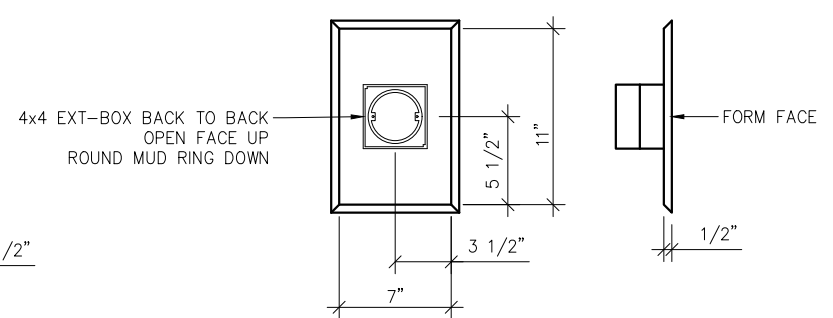
- NOTES:
1. WALL THICKNESS = 4"
  2. REINFORCING BARS R3x130 TO BE PLACED IN PAIRS ONE EACH FACE OF PANEL W/ 3/4" MIN. COVER



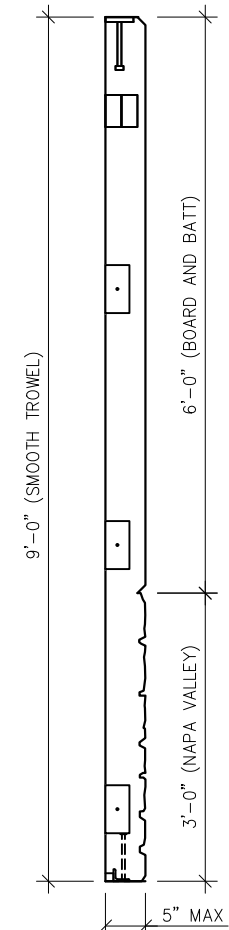
**BUMPOUT DETAIL**  
SEE SHEET DN-23 FOR  
ADD'L INFO



**FAN DETAIL**  
RVF4XL



**LIGHT DETAIL**



EMBEDDED MATERIALS	
ITEM	QTY
AS-2	4
PS-2	9
PS-10	4
PS-13	4
R317	4
R320	4
R3x77	2
R3x80	2
R3x104	6
R4x120	1
R4x180	1
4x4 J-BOX	3
B.O. 36 1/8"x82 1/4"	1
4x4 E-BOX	2
ROUND MUD RING	1
B.O. 4 1/2" DIA.	2

CU. FT. CONC. 40(1.6)	SQ. FT. W.W.F. 121
--------------------------	-----------------------

APPROXIMATE WEIGHT  
6059

**CXT INCORPORATED  
CONTROLLED COPY**  
IF THIS STATEMENT IS NOT PRINTED  
IN RED, DOCUMENT MAY NOT BE CURRENT  
ISSUED FOR PRODUCTION BY: MICHAEL C. TOLMAN

**CXT**  
Precast Products  
6701 E Flamingo Ave Bldg 300 Nampa, ID 83687  
901 N. Highway 77 Hillsboro, TX 76645  
362 Waverly Road Williamstown, WV 26187

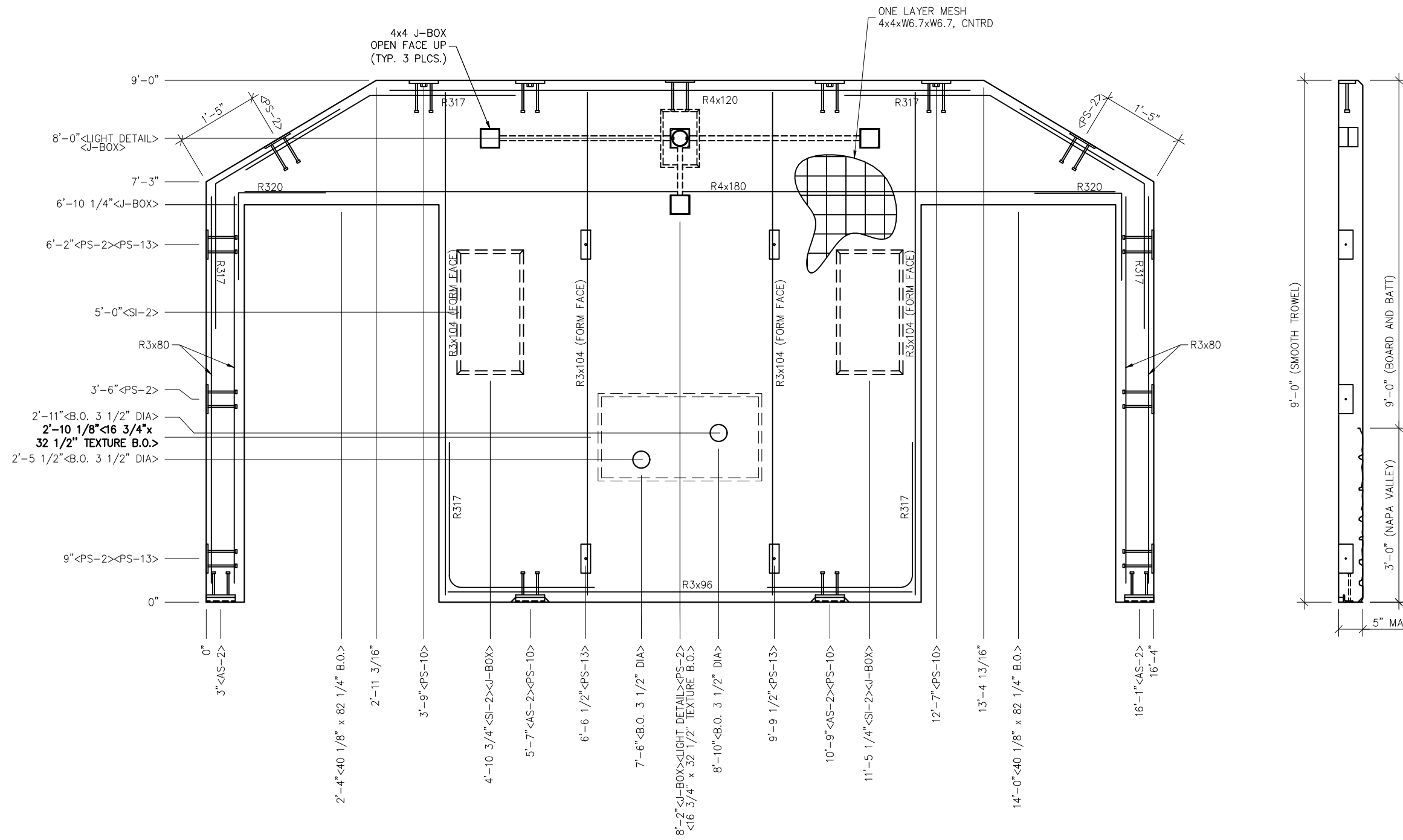
PROJECT TITLE  
**DENALI**  
BUILDING NUMBER DN-374

NOTICE  
The information contained herein is proprietary and the exclusive property of CXT Incorporated. The information may only be used by the original recipient for the purpose intended. Reproduction or distribution of this information is strictly prohibited without the prior written consent of CXT Incorporated. By allowing use of this information, CXT Incorporated grants no warranty, express or implied, including a warranty of merchantability or of fitness for a particular purpose.

REV.	DESCRIPTION	APPROVAL	DATE
DRAWN	C.WISSER	FILE NO.	DN-374
CHECKED	MCT	PLOT	24

<b>WALL PANEL MARK W5</b>	
DWG NO. DN-12	SHEET 12 24
REV. 0	

- NOTES:**
1. WALL THICKNESS = 5"
  2. REBAR TO BE CENTERED IN PANEL
  3. BLOCKOUT TEXTURE FOR LIGHT, SERVICE PANEL, AND EXHAUST FANS.



4x4 J-BOX  
OPEN FACE UP  
(TYP. 3 PLCS.)

ONE LAYER MESH  
4x4xW6.7xW6.7, CNTRD

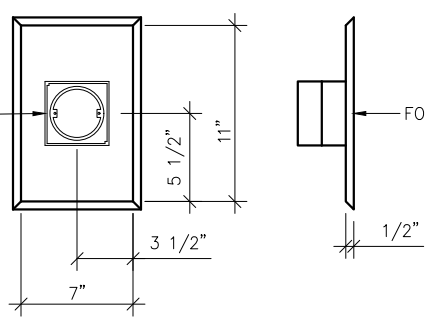
9'-0" (SMOOTH TROWEL)

9'-0" (BOARD AND BATT)

5" MAX

4x4 EXT-BOX BACK TO BACK  
OPEN FACE UP  
ROUND MUD RING DOWN

FORM FACE



LIGHT DETAIL

NOTES:

1. WALL THICKNESS = 5"
2. REBAR TO BE CENTERED IN PANEL
3. BLOCKOUT TEXTURE FOR LIGHT AND FOUNTAIN.

EMBEDDED MATERIALS	
ITEM	QTY
AS-2	4
PS-2	9
PS-10	4
PS-13	4
R317	6
R320	2
R3x96	1
R3x80	4
R3x104	4
R4x120	1
R4x180	1
SI-2 MOLD	2
B.O. 40 1/8" x 82 1/4"	2
4x4 E-BOX	2
ROUND MUD RING	1
4X4 J-BOX	3
B.O. TEX. 16 3/4" x 32 1/2"	1
B.O. 3 1/2" DIA	2

CU. FT. CONC. 32(1.27)	SQ. FT. W.W.F. 96
---------------------------	----------------------

APPROXIMATE WEIGHT  
4802

**CXT INCORPORATED  
CONTROLLED COPY**  
IF THIS STATEMENT IS NOT PRINTED  
IN RED, DOCUMENT MAY NOT BE CURRENT  
ISSUED FOR PRODUCTION BY: MICHAEL C. TOLMAN



6701 E Flamingo Ave Bldg 300 Nampa, ID 83687  
901 N. Highway 77 Hillsboro, TX 76645  
362 Waverly Road Williamstown, WV 26187

PROJECT TITLE  
**DENALI**  
BUILDING NUMBER DN-374

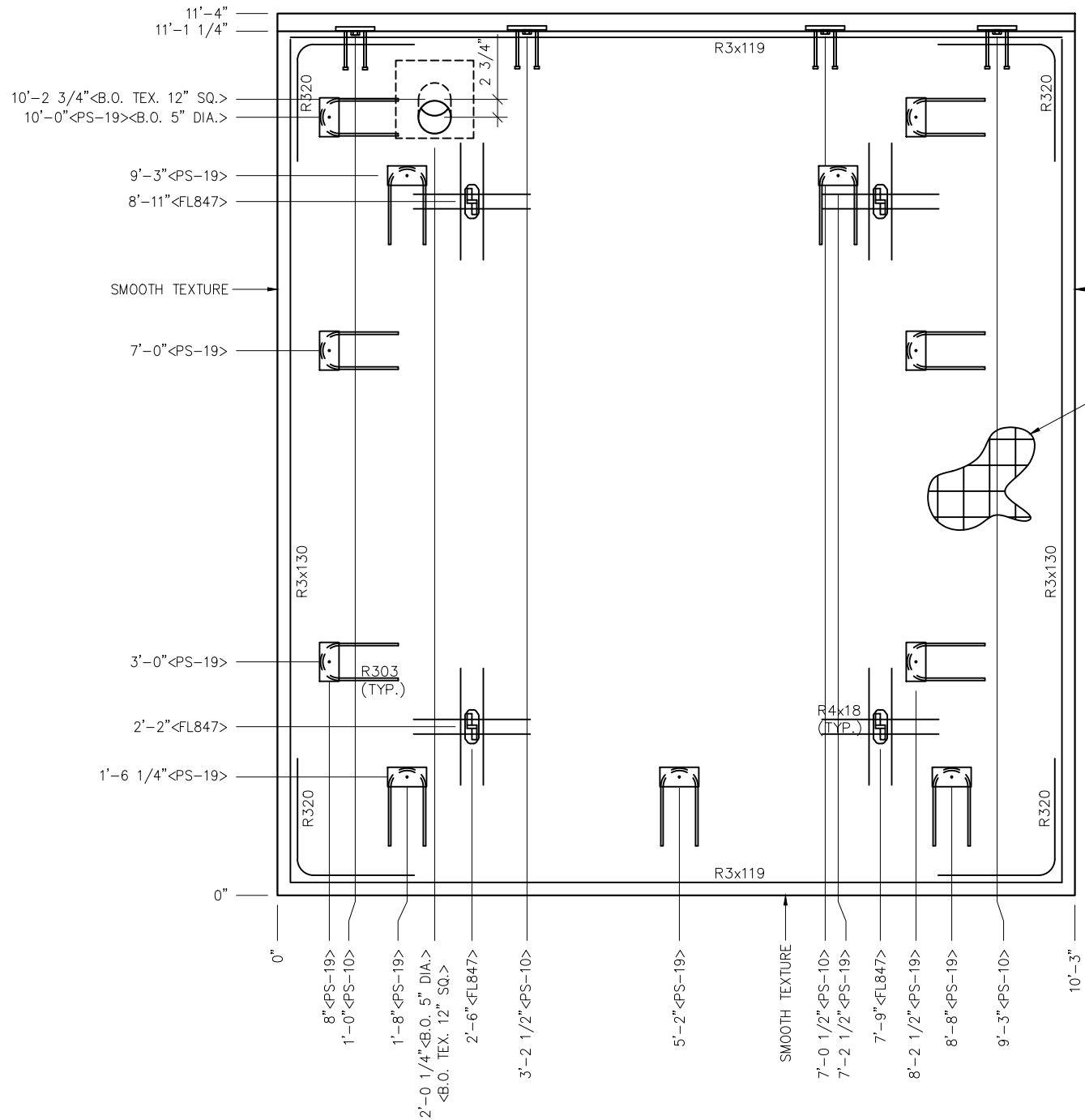
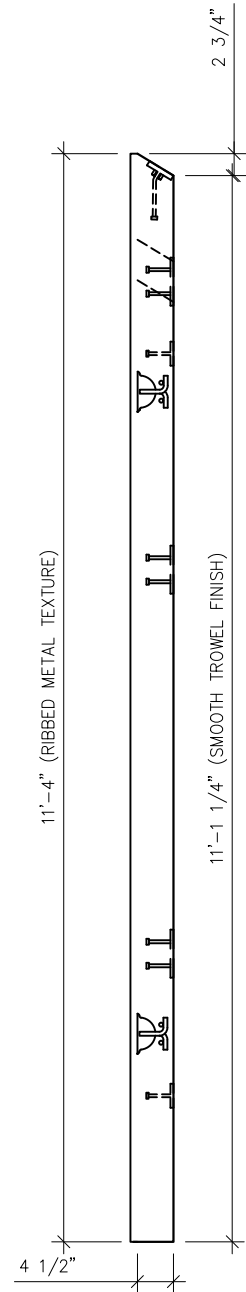
NOTICE  
The information contained herein is proprietary and the exclusive property of CXT Incorporated. The information may only be used by the original recipient for the purpose intended. Reproduction or distribution of this information is strictly prohibited without the prior written consent of CXT Incorporated. By allowing use of this information, CXT Incorporated grants no warranty, express or implied, including a warranty of merchantability or of fitness for a particular purpose.

REV.	DESCRIPTION	DATE	APPROVAL	DATE
DRAWN	C.WISSER	FILE NO.	DN-374	
CHECKED	MCT	PLOT	24	

WALL PANEL  
MARK W6

DWG NO. DN-13	SHEET 13	REV. 0
------------------	-------------	-----------





TWO LAYERS MESH  
 4x4xW6.7xW6.7  
 (1) 1" CLEAR NEAR FACE  
 (1) 1 1/4" CLEAR FAR FACE

- NOTES:
1. ROOF THICKNESS = 4 1/2" MIN. + FINISH
  2. EXCEPT R4x96, R303, & R4x18 REINFORCING BARS TO BE PLACED IN PAIRS ONE EACH FACE OF PANEL W/ 1 1/4" MIN. COVER.
  3. R4x18 TO BE PLACED W/ 1 1/4" COVER NEAR FACE.
  4. ALL OTHER REBAR TO BE CENTERED IN PANEL.

EMBEDDED MATERIALS	
ITEM	QTY
PS-19	11
PS-10	4
FL-847	4
R320	4
R303	11
R3x119	4
R3x130	4
R4x18	16
B.O. 5" DIA.	1
B.O. TEX. 12" SQ.	1

CU. FT. CONC. 47.6 (1.76)	SQ. FT. W.W.F. 226
------------------------------	-----------------------

APPROXIMATE WEIGHT  
7,140

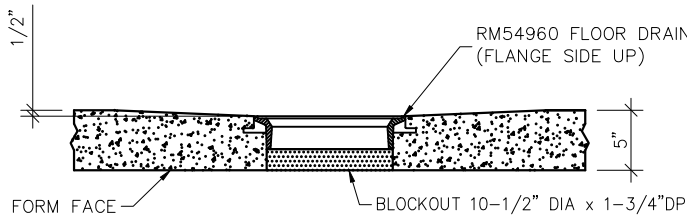
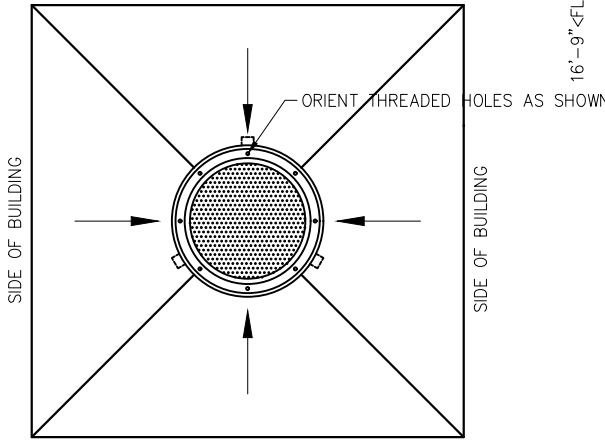
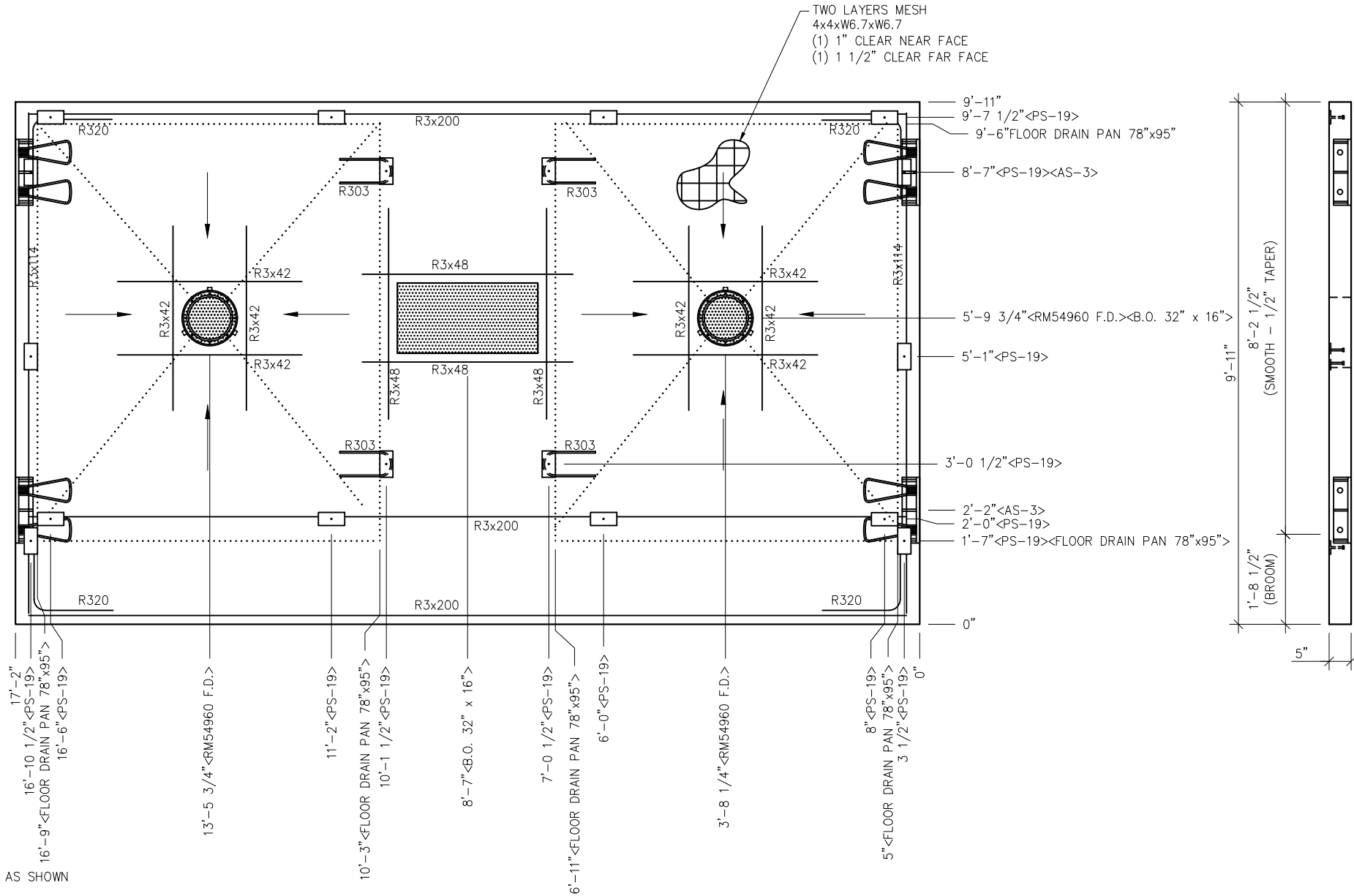
**CXT INCORPORATED  
 CONTROLLED COPY**  
 IF THIS STATEMENT IS NOT PRINTED  
 IN RED, DOCUMENT MAY NOT BE CURRENT  
 ISSUED FOR PRODUCTION BY: MICHAEL C. TOLMAN

PROJECT TITLE  
**DENALI**  
 BUILDING NUMBER DN-374

NOTICE  
 The information contained herein is proprietary and the exclusive property of CXT Incorporated. The information may only be used by the original recipient for the purpose intended. Reproduction or distribution of this information is strictly prohibited without the prior written consent of CXT Incorporated. By allowing use of this information, CXT Incorporated grants no warranty, express or implied, including a warranty of merchantability or of fitness for a particular purpose.

REV.	DESCRIPTION	DATE	APPROVAL	DATE
SCALE	1/2"=1'-0"	DATE		5/18/22
DRAWN	C.WISSER	FILE NO.	DN-374	
CHECKED	MCT	PLOT	24	

<b>ROOF SLAB MARK R2</b>	
DWG NO. DN-15	SHEET 15 24
REV. 0	



FLOOR DRAIN BLOCKOUT DETAIL

- NOTES:
- FLOOR THICKNESS = 5", SLOPE 1/2" TO FLOOR DRAIN BLOCKOUTS AS INDICATED BY ARROWS.
  - EXCEPT R303, REINFORCING BARS TO BE PLACED IN PAIRS ONE EACH FACE OF PANEL W/ 1-1/4" MIN. COVER

EMBEDDED MATERIALS	
ITEM	QTY
AS-3	4
R303	4
R3x42	16
R320	8
R3x48	8
R3x114	4
R3x200	6
B.O. 32" x 16"	1
RM54960 F.D.	2
PS-19	18
FLOOR DRAIN PAN 78"x95"	2

CU. FT. CONC.	SQ. FT. W.W.F.
68.9 (2.55)	340

APPROXIMATE WEIGHT  
10,335

**CXT INCORPORATED  
CONTROLLED COPY**  
IF THIS STATEMENT IS NOT PRINTED  
IN RED, DOCUMENT MAY NOT BE CURRENT  
ISSUED FOR PRODUCTION BY: MICHAEL C. TOLMAN

**CXT**  
Precast Products  
6701 E Flamingo Ave Bldg 300 Nampa, ID 83687  
901 N. Highway 77 Hillsboro, TX 76645  
362 Waverly Road Williamstown, WV 26187

PROJECT TITLE  
**DENALI**  
BUILDING NUMBER DN-374

NOTICE  
The information contained herein is proprietary and the exclusive property of CXT Incorporated. The information may only be used by the original recipient for the purpose intended. Reproduction or distribution of this information is strictly prohibited without the prior written consent of CXT Incorporated. By allowing use of this information, CXT Incorporated grants no warranty, express or implied, including a warranty of merchantability or of fitness for a particular purpose.

REV.	DESCRIPTION	APPROVAL	DATE
SCALE	3/8"=1'-0"	DATE	5/18/22
DRAWN	C.WISSER	FILE NO.	DN-374
CHECKED	MCT	PLOT	32

FLOOR PLAN MARK F1	
DWG NO. DN-16	SHEET 16 24
REV. 0	



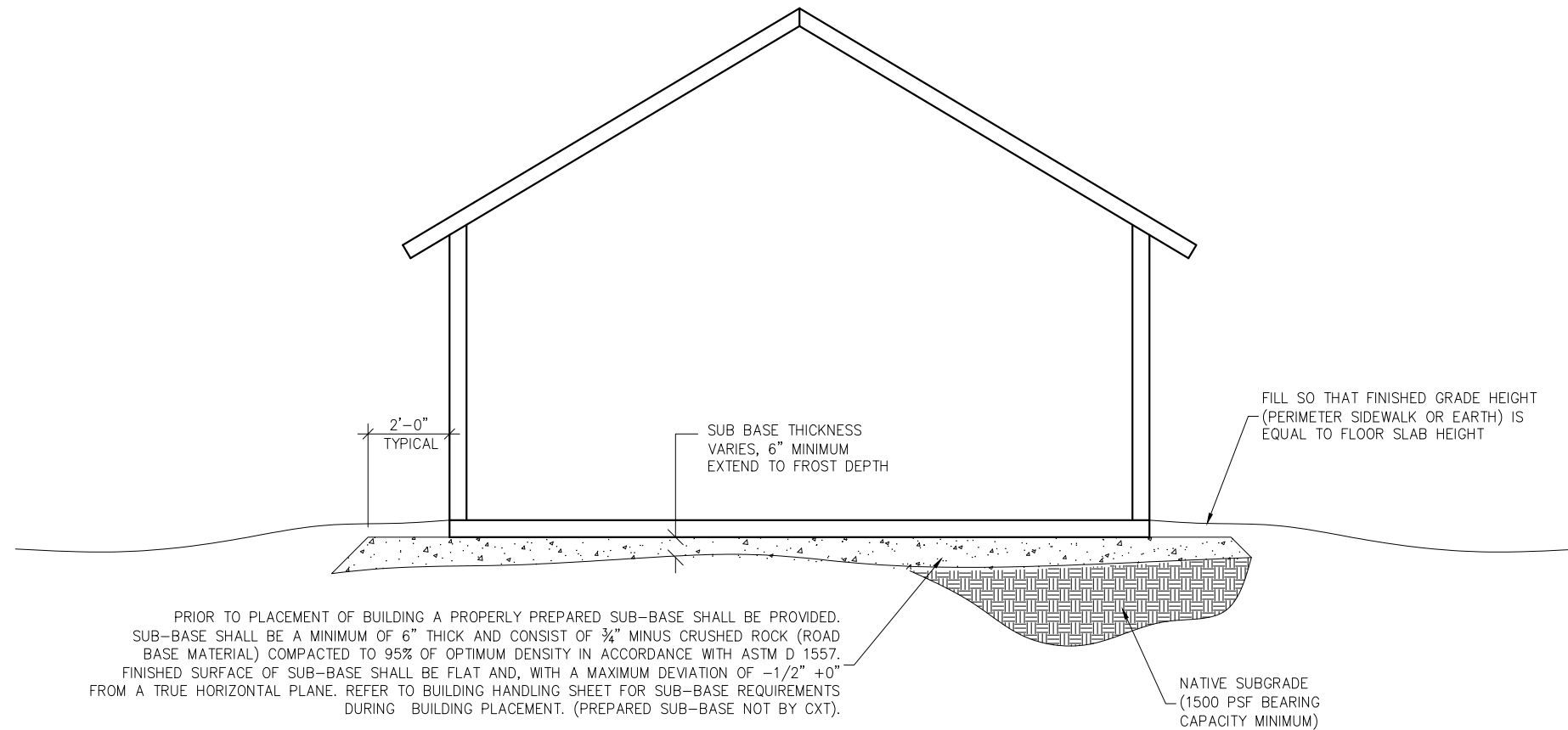
**NOTE:**

THIS FACTORY ASSEMBLED BUILDING, AS CONSTRUCTED, PROVIDES A RIGID BOX TYPE STRUCTURAL SYSTEM. VERTICAL LOADS ARE TRANSFERRED PRIMARILY THROUGH BEARING WALLS TO THE STRUCTURAL SLAB FLOOR OF THE BUILDING. THE VERTICAL LOADS ARE THEN DISTRIBUTED THROUGH THE REINFORCED CONCRETE FLOOR TO THE PREPARED GRANULAR, NON-FROST SUSCEPTIBLE (NFS) SUB-BASE WHICH DISTRIBUTES THE VERTICAL LOADS IN RELATIVELY UNIFORM FASHION TO THE NATIVE SUB-GRADE. AS WITH MOST CONSTRUCTION, THIS DOES REQUIRE THE NATIVE SUB-GRADE TO BE STRIPPED OF VEGETATION AND TOP SOIL PRIOR TO PLACEMENT OF THE PREPARED GRANULAR SUB-BASE. DUE TO THE INHERENT STIFFNESS OF THE BUILDING, IT WILL REMAIN SAFE AND STRUCTURALLY SOUND IN THE UNLIKELY EVENT OF FREEZING ACTION BELOW THE BUILDING REGARDLESS OF NATURAL FREEZE/ THAW CYCLES ANTICIPATED TO BE ENCOUNTERED IN THE STATE OF GEORGIA.

LATERAL LOADS ARE TRANSFERRED TO THE GROUND THROUGH FRICTIONAL RESISTANCE WITHOUT SLIDING OR SHIFTING BETWEEN THE BUILDING FLOOR SLAB AND THE PREPARED SOIL AND GRAVEL SUB-BASE ON WHICH THE BUILDING RESTS. SEISMIC ANALYSES ARE BASED ON LOADS DETERMINED IN ACCORDANCE WITH THE INTERNATIONAL BUILDING CODE USING PARAMETERS, WHICH MEET OR EXCEED THE CODE PRESCRIBED REQUIREMENTS FOR THIS INSTALLATION.

THIS BUILDING AS DESIGNED, RESTING ON A PROPERLY PREPARED GRANULAR SUB-BASE WILL BE SAFE AND STRUCTURALLY SOUND FOR VERTICAL AND LATERAL LOADS AS DISCUSSED ABOVE. A FULL DEPTH FOUNDATION WALL AT THE BUILDING PERIMETER AND AN ANCHORAGE SYSTEM, TYPICAL FOR OTHER TYPES OF BUILDING CONSTRUCTION, ARE NOT REQUIRED FOR THIS BUILDING.

THE "FOUNDATION" FOR THIS STRUCTURE IS ESSENTIALLY THE COMBINATION OF THE COMPACTED SUB-BASE MATERIAL AND THE BUILDING'S REINFORCED SLAB. THE COMBINATION OF THE COMPACTED SUB-BASE MATERIAL AND THE BUILDING'S REINFORCED SLAB NEED TO BE AT LEAST 12" THICK AND THE COMPACTED SUB-BASE MATERIAL SHALL EXTEND BELOW THE LOCAL FROST DEPTH



**CXT INCORPORATED  
CONTROLLED COPY**  
IF THIS STATEMENT IS NOT PRINTED  
IN RED, DOCUMENT MAY NOT BE CURRENT  
ISSUED FOR PRODUCTION BY: MICHAEL C. TOLMAN



6701 E Flamingo Ave Bldg 300 Nampa, ID 83687  
901 N. Highway 77 Hillsboro, TX 76645  
362 Waverly Road Williamstown, WV 26187

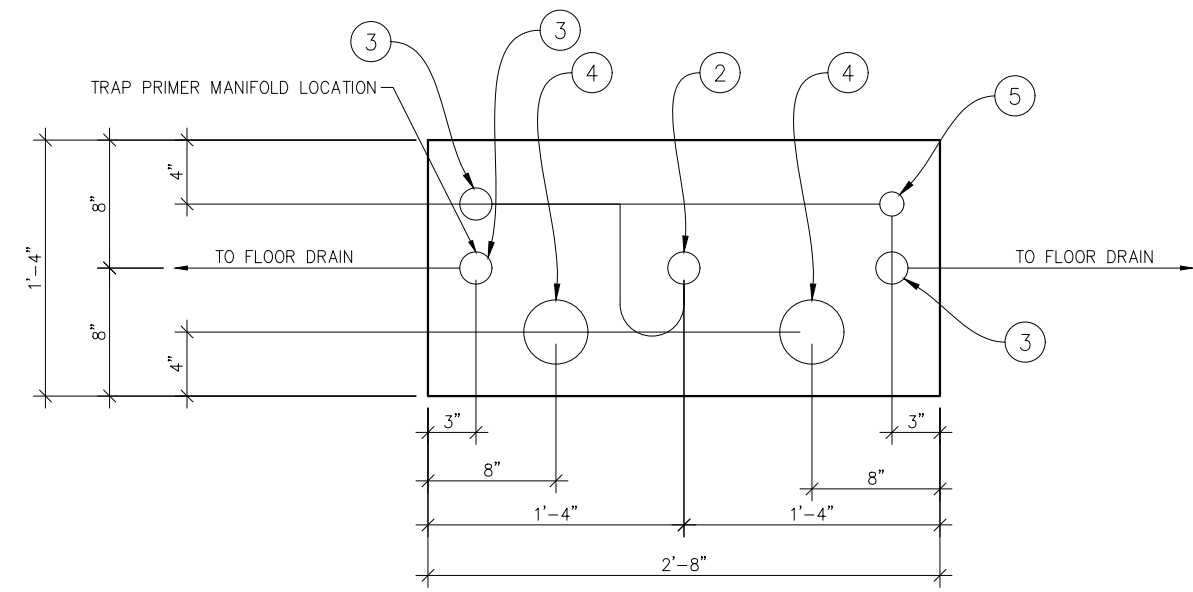
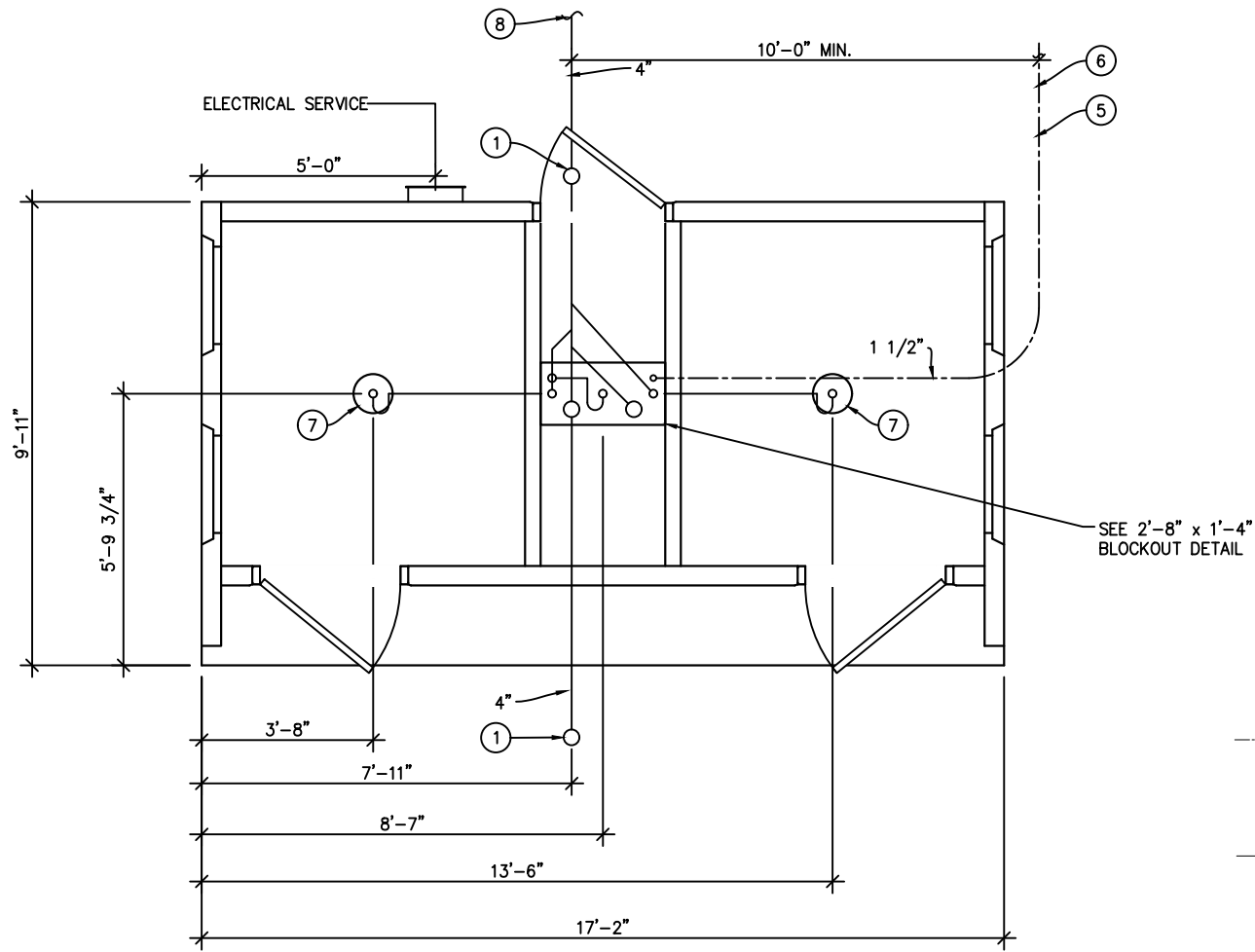
PROJECT TITLE  
**DENALI**  
BUILDING NUMBER DN-374

**NOTICE**  
The information contained herein is proprietary and the exclusive property of CXT Incorporated. The information may only be used by the original recipient for the purpose intended. Reproduction or distribution of this information is strictly prohibited without the prior written consent of CXT Incorporated. By allowing use of this information, CXT Incorporated grants no warranty, express or implied, including a warranty of merchantability or of fitness for a particular purpose.  
CXT Incorporated

REV.	DESCRIPTION	DATE	APPROVAL	DATE
SCALE	N/A	DATE		5/18/22
DRAWN	C.WISSER	FILE NO.	DN-374	
CHECKED	MCT	PLOT	N/A	

**FOUNDATION  
DETAIL**

DWG NO. <b>DN-17</b>	SHEET 17 24	REV. 0
-------------------------	-------------------	-----------



**PIPING LEGEND**

- 1 1/2" WATER SERVICE, ANNEALED "SOFT" COPPER, ASTM B88, TYPE 'K'
- BELOW FLOOR WASTE PIPING: SCH 40 PVC, ASTM D2665, TYPE DWV
- BELOW FLOOR VENT PIPING: SCH 40 PVC, ASTM D2665, TYPE DWV

ALL PIPING INDICATED ON THIS SHEET IS NOT BY CXT

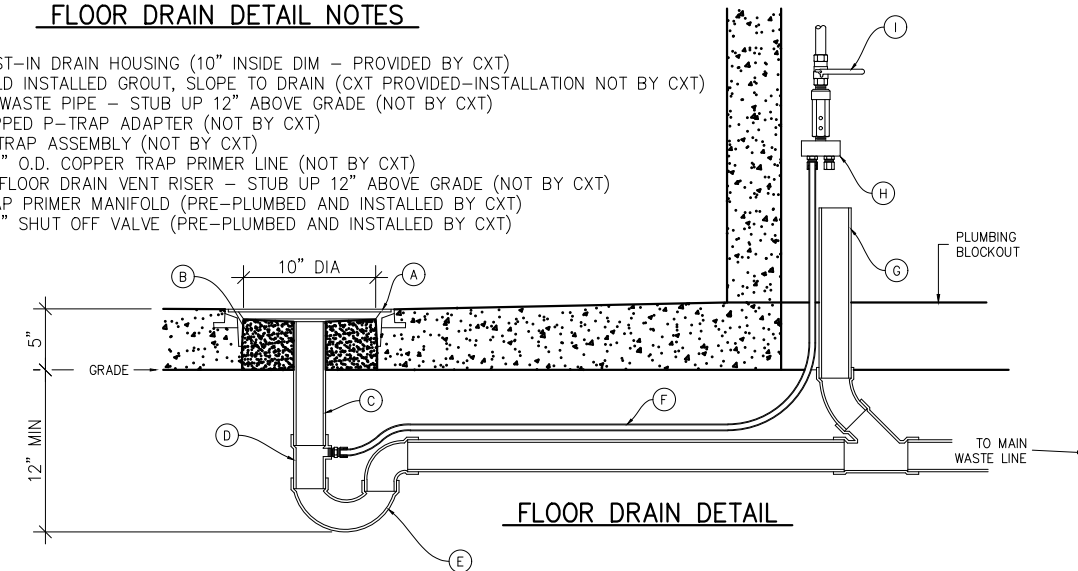
**FLOOR DRAIN BLOCKOUTS & BELOW FLOOR PIPING**

**BELOW FLOOR PIPING – KEY NOTES**

1. 4" CLEAN OUT TO GRADE.
2. 2" FLOOR DRAIN. FIELD INSTALLED TRAP PRIMER SYSTEM IF REQUIRED BY AUTHORITY HAVING JURISDICTION. (2'-8" x 1'-4" BLOCKOUT)
3. 2" VENT PIPES EXTENDED 12" ABOVE FINISHED FLOOR LEVEL, PROVIDE TEST PLUG. (2'-8" x 1'-4" BLOCKOUT)
4. 4" WASTE PIPE EXTENDED 12" ABOVE FINISHED FLOOR LEVEL, PROVIDE TEST PLUG. (2'-8" x 1'-4" BLOCKOUT)
5. 1 1/2" TYPE K ANNEALED "SOFT" COPPER WATER SERVICE EXTENDED 12" ABOVE FINISHED FLOOR LEVEL, PROVIDE CAP AT END. (2'-8" x 1'-4" BLOCKOUT)
6. MIN. BURY PER LOCAL REQUIREMENTS TO PROTECT AGAINST FREEZING AND DAMAGE.
7. 2" FLOOR DRAIN. FIELD INSTALLED TRAP PRIMER SYSTEM IF REQUIRED BY AUTHORITY HAVING JURISDICTION. (10" DIA BLOCKOUT)
8. 30" MIN. BURY, PROVIDE TRACER TAPE.
9. MAXIMUM ALLOWABLE WATER PRESSURE IS TO BE 75PSI.
10. MINIMUM ALLOWABLE WATER PRESSURE IS TO BE 40PSI.

**FLOOR DRAIN DETAIL NOTES**

- A. CAST-IN DRAIN HOUSING (10" INSIDE DIM – PROVIDED BY CXT)
- B. FIELD INSTALLED GROUT, SLOPE TO DRAIN (CXT PROVIDED-INSTALLATION NOT BY CXT)
- C. 2" WASTE PIPE – STUB UP 12" ABOVE GRADE (NOT BY CXT)
- D. TAPPED P-TRAP ADAPTER (NOT BY CXT)
- E. P-TRAP ASSEMBLY (NOT BY CXT)
- F. 1/2" O.D. COPPER TRAP PRIMER LINE (NOT BY CXT)
- G. 2" FLOOR DRAIN VENT RISER – STUB UP 12" ABOVE GRADE (NOT BY CXT)
- H. TRAP PRIMER MANIFOLD (PRE-PLUMBED AND INSTALLED BY CXT)
- I. 1/2" SHUT OFF VALVE (PRE-PLUMBED AND INSTALLED BY CXT)



CXT INCORPORATED  
CONTROLLED COPY  
IF THIS STATEMENT IS NOT PRINTED  
IN RED, DOCUMENT MAY NOT BE CURRENT  
ISSUED FOR PRODUCTION BY: MICHAEL C. TOLMAN



6701 E Flamingo Ave Bldg 300 Nampa, ID 83687  
901 N. Highway 77 Hillsboro, TX 76645  
362 Waverly Road Williamstown, WV 26187

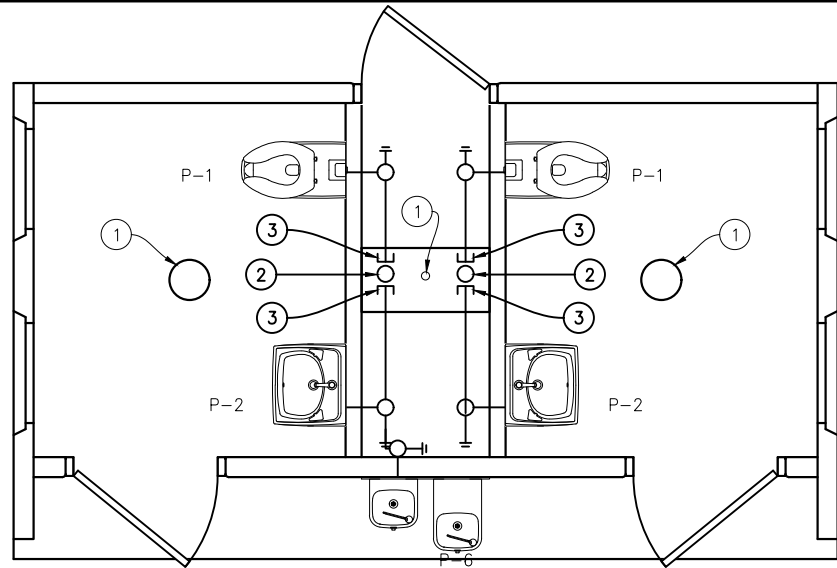
PROJECT TITLE  
**DENALI**  
BUILDING NUMBER DN-374

NOTICE  
The information contained herein is proprietary and the exclusive property of CXT Incorporated. The information may only be used by the original recipient for the purpose intended. Reproduction or distribution of this information is strictly prohibited without the prior written consent of CXT Incorporated. By allowing use of this information, CXT Incorporated grants no warranty, express or implied, including a warranty of merchantability or of fitness for a particular purpose.

REV.	DESCRIPTION	APPROVAL	DATE
SCALE	3/16"=1'-0"	DATE	5/18/22
DRAWN	C.WISSER	FILE NO.	DN-374
CHECKED	MCT	PLOT	64

**UNDERGROUND PIPING LAYOUT**

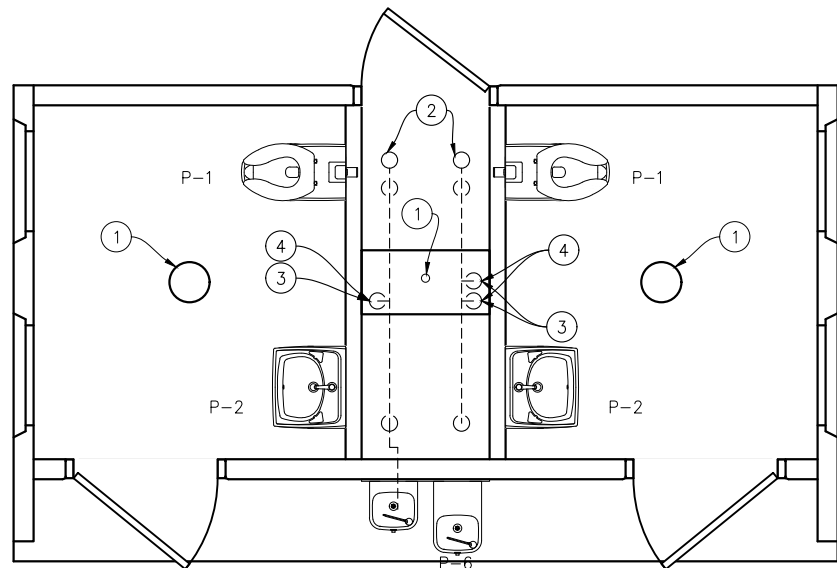
DWG NO. <b>DN-18</b>	SHEET 18 24	REV. 0
-------------------------	-------------------	-----------



**WASTE PIPING**

**WASTE PIPING – KEY NOTES**

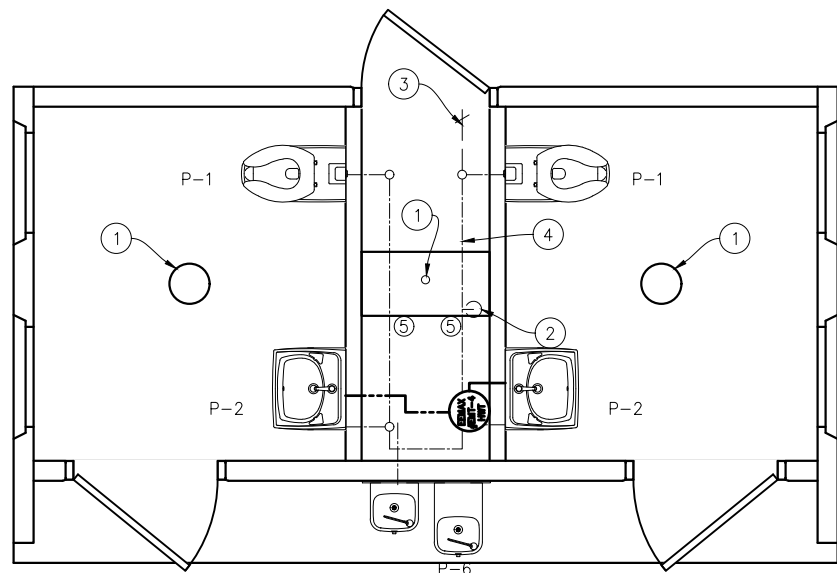
1. 2" FLOOR DRAIN P-7, FIELD INSTALLED (NOT BY CXT)
2. 4" WASTE THROUGH FLOOR, FIELD INSTALLED (NOT BY CXT)
3. PROVIDE TEST PLUG IN END OF WASTE PIPE. CONTINUATION OF PIPING IS FIELD INSTALLED & NOT BY CXT.
4. CAPPED WASTE CONNECTION BETWEEN UNITS, NOT BY CXT. SEE DN-20 WASTE AND VENT RISER DIAGRAM FOR SIZE.



**VENT PIPING**

**VENT PIPING – KEY NOTES**

1. 2" FLOOR DRAIN P-7, FIELD INSTALLED (NOT BY CXT)
2. 4" VENT THROUGH ROOF.
3. 2" VENT WITH TEST PLUG.
4. FIELD INSTALLED 2" VENT PIPING FROM FLOOR DRAINS. (NOT BY CXT)



**WATER PIPING**

**WATER PIPING – KEY NOTES**

1. 2" FLOOR DRAIN, FIELD INSTALLED (P-7) (NOT BY CXT)
2. FIELD INSTALLED 1 1/2" WATER SUPPLY WITH SHUT-OFF VALVE NEAR FLOOR. (NOT BY CXT)
3. CAPPED WATER LINES. CONNECTION BETWEEN SIDES IS TO BE FIELD INSTALLED. (NOT BY CXT)
4. 3/4" HOSE BIBB WITH VACUUM BREAKER AND WHEEL HANDLE.
5. WATER PIPING ALONG WALL

**PIPING LEGEND**

- COLD WATER; COPPER. ASTM B88, TYPE "K"
- HOT WATER; COPPER, ASTM B88, TYPE "K"
- VENT PIPING; SCH 40 PVC, ASTM D2665, TYPE DWV
- WASTE PIPE; SCH 40 PVC, ASTM D2665, TYPE DWV
- FIELD PIPING; (NOT BY CXT)

CXT INCORPORATED  
CONTROLLED COPY  
IF THIS STATEMENT IS NOT PRINTED  
IN RED, DOCUMENT MAY NOT BE CURRENT  
ISSUED FOR PRODUCTION BY: MICHAEL C. TOLMAN



**Precast Products**

6701 E Flamingo Ave Bldg 300 Nampa, ID 83687  
901 N. Highway 77 Hillsboro, TX 76645  
362 Waverly Road Williamstown, WV 26187

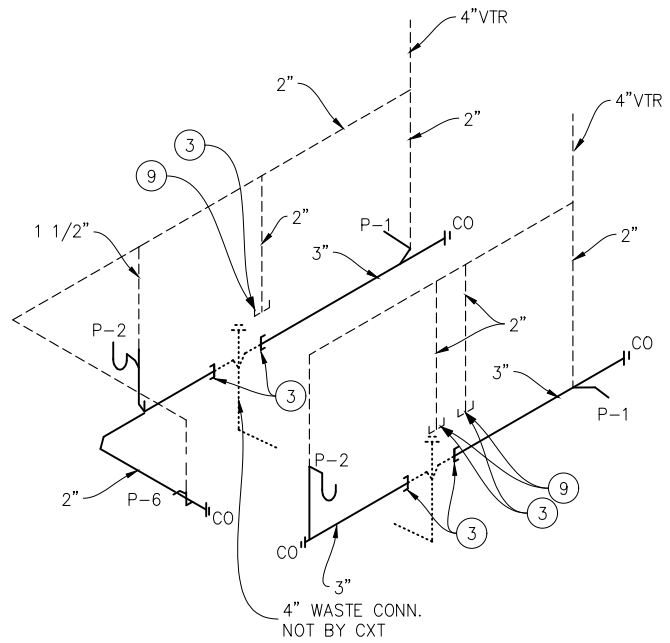
PROJECT TITLE  
**DENALI**  
BUILDING NUMBER DN-374

NOTICE  
The information contained herein is proprietary and the exclusive property of CXT Incorporated. The information may only be used by the original recipient for the purpose intended. Reproduction or distribution of this information is strictly prohibited without the prior written consent of CXT Incorporated. By allowing use of this information, CXT Incorporated grants no warranty, express or implied, including a warranty of merchantability or of fitness for a particular purpose.  
CXT Incorporated

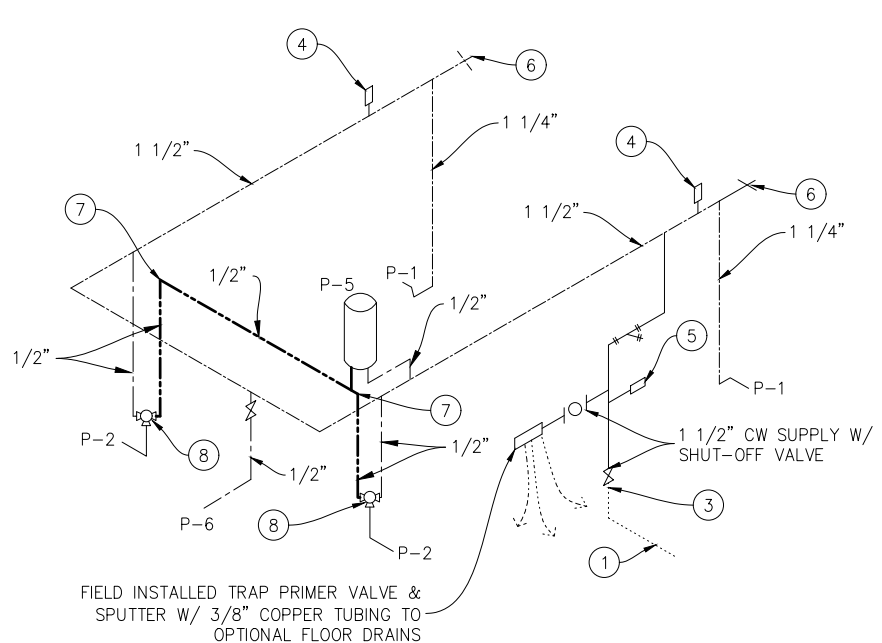
REV.	DESCRIPTION	APPROVAL	DATE
SCALE	3/16"=1'-0"	DATE	5/18/22
DRAWN	C.WISSER	FILE NO.	DN-374
CHECKED	MCT	PLOT	64

**PLUMBING  
PLANS & NOTES**

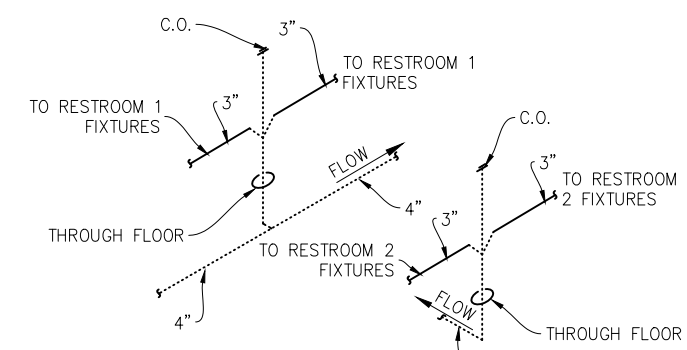
DWG NO.	SHEET	REV.
DN-19	19 / 24	0



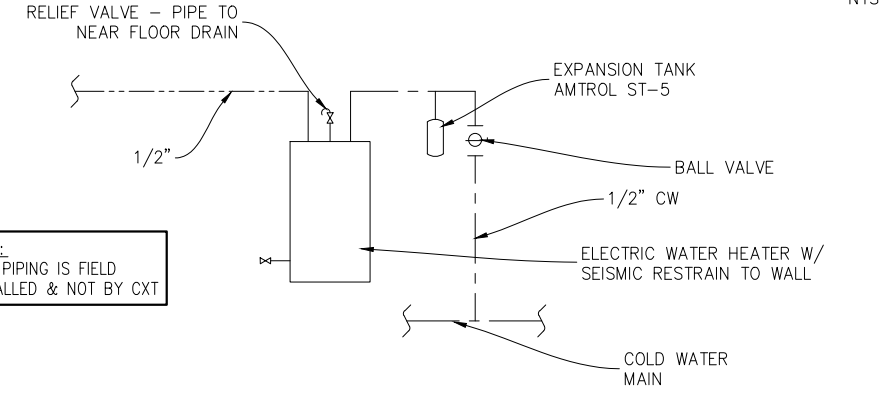
**WASTE & VENT RISER DIAGRAM**  
NTS



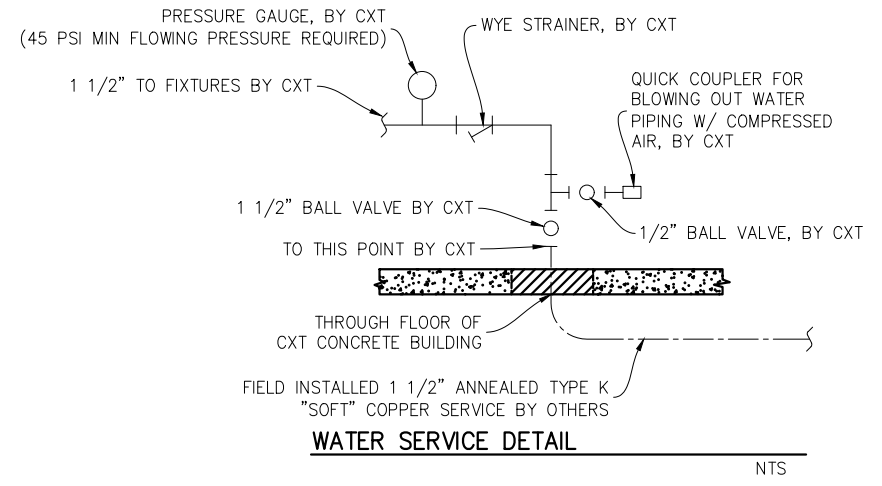
**WATER PIPING DIAGRAM**  
NTS



**DETAIL OF FIELD INSTALLED WASTE CONNECTION**  
NTS



**HOT WATER PIPING RISER DIAGRAM**  
NTS



**WATER SERVICE DETAIL**  
NTS

**PIPING LEGEND**

- COLD WATER; COPPER, ASTM B88, TYPE "K"
- HOT WATER; COPPER, ASTM B88, TYPE "K"
- VENT PIPING; SCH 40 PVC, ASTM D2665, TYPE DWV
- WASTE PIPE; SCH 40 PVC, ASTM D2665, TYPE DWV
- FIELD PIPING; (NOT BY CXT)
- WYE STRAINER

**NOTES:**

1. 1-1/2" COLD WATER THRU FLOOR, NOT BY CXT
2. 1/2" BALL VALVE & CAPPED CW LINE. FIELD INSTALLED TRAP PRIMER VALVE AND PIPING TO FLOOR DRAINS IF REQUIRED BY AUTHORITY HAVING JURISDICTION.
3. TO THIS POINT BY CXT.
4. ASSE 1010 WATER HAMMER ARRESTOR SIOUX CHIEF HYDRA-RESTOR #654-C OR EQUAL
5. 1/2" AIR QUICK CONNECTION W/ BALL VALVE FOR BLOWING OUT WATER PIPING. (SEE WATER SERVICE DETAIL)
6. 3/4" HOSE BIBB W/ SCREW ON VACUUM BREAKER
7. INSULATE HOT WATER PIPING FROM HTR TO FIXTURE W/ 1" (R-3.6) PRE-MOLDED FIBERGLASS PIPE.
8. ASSE 1070 WATER TEMPERATURE LIMITING DEVICE.
9. PROVIDE SHUT-OFF VALVES ON HOT AND COLD WATER SUPPLY FOR EACH FIXTURE

CXT INCORPORATED  
CONTROLLED COPY  
IF THIS STATEMENT IS NOT PRINTED  
IN RED, DOCUMENT MAY NOT BE CURRENT  
ISSUED FOR PRODUCTION BY: MICHAEL C. TOLMAN

SYM	DESCRIPTION	MANUFACTURER	CXT PART NUMBER	FLUSH VL/FAUCET	SUPPLIES	QTY	HW	CW	WASTE	VENT	SUPPLIES / NOTES
P-1	WATER CLOSET (PUSH BUTTON)	AMERICAN STANDARD	2634.101 (W.C.) 5905.100 (W.C. SEAT)	SLOAN "ROYAL" #952-1.6 L-3 W=4"	SLOAN HY33A	2		1-1/4"	3"	2"	1. OFFSET FLUSH VALVE TAILPIECE PER ADA, RIGHT OR LEFT HAND, AS REQUIRED. PROVIDE FLUSH VALVE FOR 3" WALL THICKNESS. 2. MOUNT RIM AT 17" ABOVE FLOOR. 3. USE CLOSET GASKET JG13534 AND Z1203 FINISH KIT
P-2	LAVATORY (PUSH BUTTON)	AMERICAN STANDARD	0356.421 (LAV)	SYMMONS SLS-7000		2		1/2"	1-1/2"	1-1/2"	1. HAMMER ARRESTOR JRS520-T-C, FLOOR DRAIN S2005A025NBLP, TRAP PRIMER-MIFAB MM500, DISTR UNIT- MIFAB 2. 1/2X15 COMP ANG LAV BSCR1915AC 3. 3 PC COVER SET PF202WH.
P-3	NOT USED										
P-4	NOT USED										
P-5	WATER HEATER	EEMAX	EMT-4			1	1/2"	1/2"	-	-	1. 4 GALLON 120V WALL MOUNTED WATER HEATER. PROVIDE GFCI OUTLET IN CHASE PER MF'R RECOMMENDATIONS.
P-6	DRINKING FOUNTAIN	HAWS	1119FR			1	-	(2) 1/2"	(2) 1-1/2"	(2) 1-1/2"	1. DUAL HEIGHT COMBINATION W/ CANE SKIRT
P-7	FLOOR DRAIN	TRAVIS SIOUX CHIEF (CHASE)	54960-CXT 840-2A			2 1	- -	- -	2"	2"	1. TRAP PRIMER- MIFAB MM500, DISTR UNIT- MIFAB ASSE 1018 OR ASSE 1044



6701 E Flamingo Ave Bldg 300 Nampa, ID 83687  
901 N. Highway 77 Hillsboro, TX 76645  
362 Waverly Road Williamstown, WV 26187

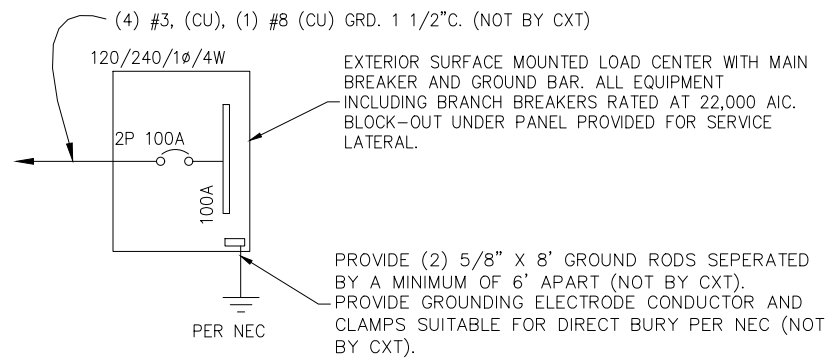
PROJECT TITLE  
**DENALI**  
BUILDING NUMBER DN-374

NOTICE  
The information contained herein is proprietary and the exclusive property of CXT Incorporated. The information may only be used by the original recipient for the purpose intended. Reproduction or distribution of this information is strictly prohibited without the prior written consent of CXT Incorporated. By allowing use of this information, CXT Incorporated grants no warranty, express or implied, including a warranty of merchantability or of fitness for a particular purpose.  
CXT Incorporated

REV.	DESCRIPTION	DATE	APPROVAL	DATE
SCALE	N/A	DATE		5/18/22
DRAWN	C.WISSER	FILE NO.	DN-374	
CHECKED	MCT	PLOT	N/A	

**PLUMBING DETAILS,  
DIAGRAMS, & SCHEDULES**

DWG NO. **DN-20** SHEET **20** REV. **0**  
24



**ONE-LINE POWER DIAGRAM**

**GENERAL ELECTRICAL NOTES**

- RECESSED JUNCTION BOXES FOR SINGLE DEVICES SHALL HAVE SINGLE GANG MUD RINGS CAST IN CONCRETE WALLS.
- ALL RECEPTACLES SHALL BE GFCI PROTECTED BY CIRCUIT BREAKERS, OR BY OTHER GFCI RECEPTACLES.
- ALL CONDUIT SHALL BE SIZED PER NEC. EXPOSED CONDUIT SHALL BE EMT/FMC, RECESSED SHALL BE PVC.
- INSTALL ALL WIRING IN CONDUIT OR RELATED ENCLOSURES.
- ALL ELECTRICAL INSTALLATIONS SHALL MEET THE 2014 NATIONAL ELECTRICAL CODE.
- MINIMUM WIRE SIZE SHALL BE #12 AWG COPPER, THHN INSULATION UNLESS NOTED OTHERWISE.
- ROUTE ALL CONDUITS IN UTILITY ROOM AT CEILING OR FACE OF WALLS.
- ELECTRICAL DRAWINGS ARE DIAGRAMMATIC IN NATURE & MAY NOT SHOW EXACT LOCATIONS OF DEVICES. REFER TO WALL PANEL & OTHER DRAWINGS FOR EXACT LOCATIONS OF J-BOXES, ETC..
- ALL CONDUCTORS AND CABLES MUST BE PROPERLY TERMINATED IN APPROVED BOXES, BEFORE CONNECTING THE CIRCUIT TO THE BREAKER AND BEFORE RECEIVING FINAL INSPECTION APPROVAL IN THE FACTORY
- PROVIDE CIRCUIT BREAKER LOCK OUT TABS FOR ALL HAND DRYERS

EXHAUST FAN SCHEDULE							
SYM	MFR	MODEL #	CFM	SONES	VOLTS	AMPS	NTS.
EF-1	FANTECH	RVF-4XL	180	6.0	120	0.84	1

**NOTE**

- FANS LISTED FOR WET LOCATION, CONTROL VIA OCCUPANCY SENSOR. MOUNT SPEED CONTROL IN CHASE.

PANEL SCHEDULE												
AMP 100		PANEL		TOTAL CONNECTED VA LOAD		4,174						
SURFACE MOUNT		120/240V, 1P, 3W		TOTAL CALCULATED VA LOAD		4,466						
CIRCUIT					CIRCUIT							
NO.	DESCRIPTION	OCB	LOAD		PH.	NO.	DESCRIPTION	OCB	LOAD			
			TYPE (VA)	(A)					TYPE (VA)	(A)		
1	PHOTO CONTROLLED EXTERIOR LIGHTS	1P/20A	C	28	0.2	A	2	CHASE RECEPTACLE	1P/20A	R	180	1.5
3	CHASE LIGHT	1P/20A	N	28	0.2	B	4	RESTROOM #2 LIGHT & FAN	1P/20A	N	129	1.1
5	RESTROOM #1 LIGHT & FAN	1P/20A	N	129	1.1	A	6	RESTROOM #2 HAND DRYER	1P/20A	N	1,140	9.5
7	RESTROOM #1 HAND DRYER	1P/20A	L	1,140	9.5	B	8					
9	EEMAX WATER HEATER GFCI OUTLET	1P/20A	R	1,400	11.7	A	10					
11						B	12					
13						A	14					
15						B	16					
17						A	18					
19						B	20					

LOAD	CONNECTED	CALCULATED
(C)ONTINUOUS	28 x1.25	35 VA
(R)EC (1ST 10KVA)	1580 x1.00	1580 VA
(N)ON-CONTINUOUS	1,426 x1.00	1,426 VA
(L)ARGEST MOTOR	1,140 x1.25	1,425 VA
<b>TOTAL LOAD</b>	<b>4,174</b>	<b>4,466 VA</b>
		<b>18.6 AMPS</b>

NOTE: MAXIMUM ALLOWABLE AIC IS 22K AMPS, PANEL MODIFICATIONS WILL BE REQUIRED (NOT BY CXT) IF TRANSFORMER CAPACITY EXCEEDS 175 KVA.

LIGHTING FIXTURE SCHEDULE				
FIXTURE NUMBER	VOLTAGE	WATTS	DESCRIPTION	
A	120	28	LUMINAIRE VPF84 INTERIOR LIGHT FIXTURE, VPF8-4FT-NODIM-25W-40K-MVOLT-CLP-WHT-WL-20CC SURFACE MOUNTED, LED LAMP 4 FT, WRAP AROUND LENS, LOW TEMPERATURE DRIVER, OCCUPANCY SENSOR W/ ADDITIONAL OCCUPANCY SENSOR FOR FAN CONTROL	
B	120	14	SWOOP 610 LED EXTERIOR LIGHT, YWP610-14W HP-3500K-120-CP-BRZ-CAB/PC EXTERIOR, VANDAL RESISTANT, WALL MOUNTED, 14 WATT, CLEAR PRISMATIC LENS, BUILT IN PHOTOELECTRIC CONTROL	
C	120	28	LUMINAIRE VPF84 INTERIOR LIGHT FIXTURE, VPF8-4FT-NODIM-25W-40K-MVOLT-CLP-WHT-WL SURFACE MOUNTED, LED LAMP 4 FT, WRAP AROUND LENS, LOW TEMPERATURE DRIVER, SWITCH ACTIVATED	

NOTE : THE SOURCE OF EFFICACY OF EXTERIOR LIGHTING IS TO BE A MINIMUM OF 45 LUMENS PER WATT.

CXT INCORPORATED  
CONTROLLED COPY  
IF THIS STATEMENT IS NOT PRINTED  
IN RED, DOCUMENT MAY NOT BE CURRENT  
ISSUED FOR PRODUCTION BY: MICHAEL C. TOLMAN

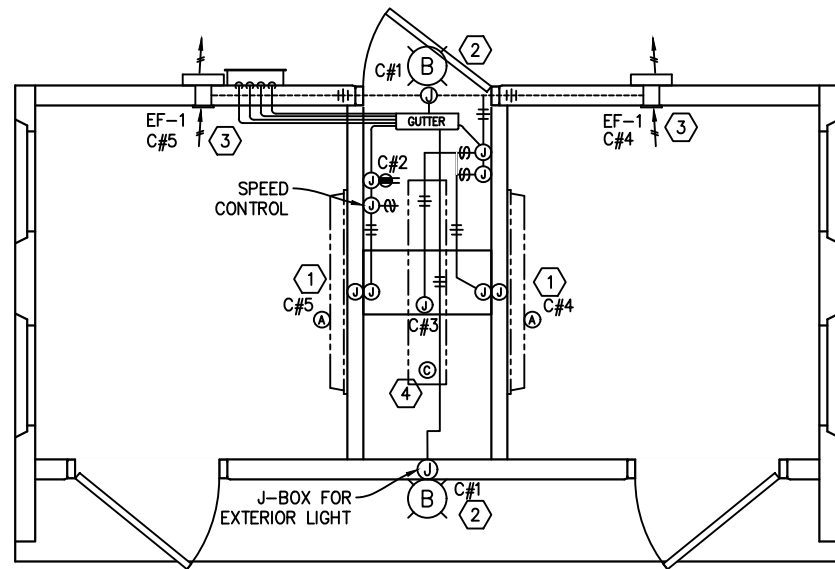
PROJECT TITLE  
**DENALI**  
BUILDING NUMBER DN-374

NOTICE  
The information contained herein is proprietary and the exclusive property of CXT Incorporated. The information may only be used by the original recipient for the purpose intended. Reproduction or distribution of this information is strictly prohibited without the prior written consent of CXT Incorporated. By allowing use of this information, CXT Incorporated grants no warranty, express or implied, including a warranty of merchantability or of fitness for a particular purpose.  
CXT Incorporated

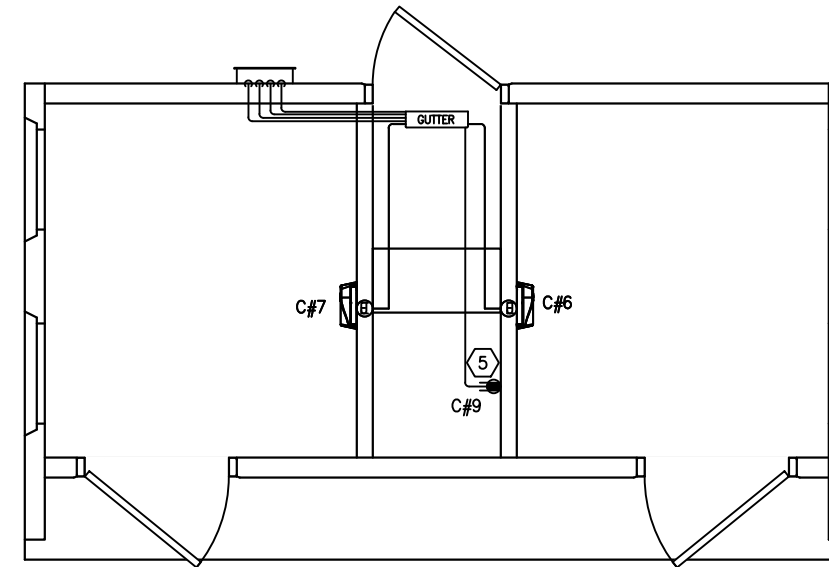
REV.	DESCRIPTION	APPROVAL	DATE
SCALE	N/A	DATE	5/18/22
DRAWN	C.WISSER	FILE NO.	DN-374
CHECKED	MCT	PLOT	N/A

**ELECTRICAL NOTES, LEGEND & SCHEDULES**

DWG NO. <b>DN-21</b>	SHEET 21	REV. 0
	24	



LIGHTING AND EXHAUST FAN PLAN



WATER HEATER, & HAND DRYER PLAN

KEY NOTES

- ①. CIRCUIT AS NEEDED FOR THE LOAD OF THE EXHAUST FANS. WIRE THROUGH OCCUPANCY SENSOR AND SPEED SWITCH IN CHASE. SPEED SWITCH FOR FANS LOCATED BY PANEL.
- ②. LIGHT FIXTURE TO BE CONTROLLED BY INTEGRAL PHOTOCELL. ROUTE WIRING IN CONCEALED CONDUIT.
- ③. RESTROOM LIGHTS TO OPERATE BY OCCUPANCY SENSOR.
- ④. LIGHT FIXTURE TO BE CONTROLLED BY SWITCH.
- ⑤. GFCI OUTLET FOR HOT WATER HEATER
- ⑥. NOT USED
- ⑦. NOT USED
- ⑧. NOT USED

SYMBOLS

- GFI RECEPTACLE
- ON / OFF SWITCH
- JUNCTION BOX
- RECESSED JUNCTION BOX
- LOAD CENTER "A"
- WALL MOUNTED LED FIXTURE
- CEILING MOUNTED LED FIXTURE
- EXTERIOR LIGHT FIXTURE
- HAND DRYER
- CIRCUIT NUMBER
- SURFACE MOUNTED CONDUIT, CROSSHATCH OR SLASH AND NUMBER DENOTES WIRES, (ALL #12AWG UNO, UNLESS NOTED) ONE WIRE TO BE GROUND
- CONCEALED CONDUIT

CXT INCORPORATED  
CONTROLLED COPY  
IF THIS STATEMENT IS NOT PRINTED  
IN RED, DOCUMENT MAY NOT BE CURRENT  
ISSUED FOR PRODUCTION BY: MICHAEL C. TOLMAN



6701 E Flamingo Ave Bldg 300 Nampa, ID 83687  
901 N. Highway 77 Hillsboro, TX 76645  
362 Waverly Road Williamstown, WV 26187

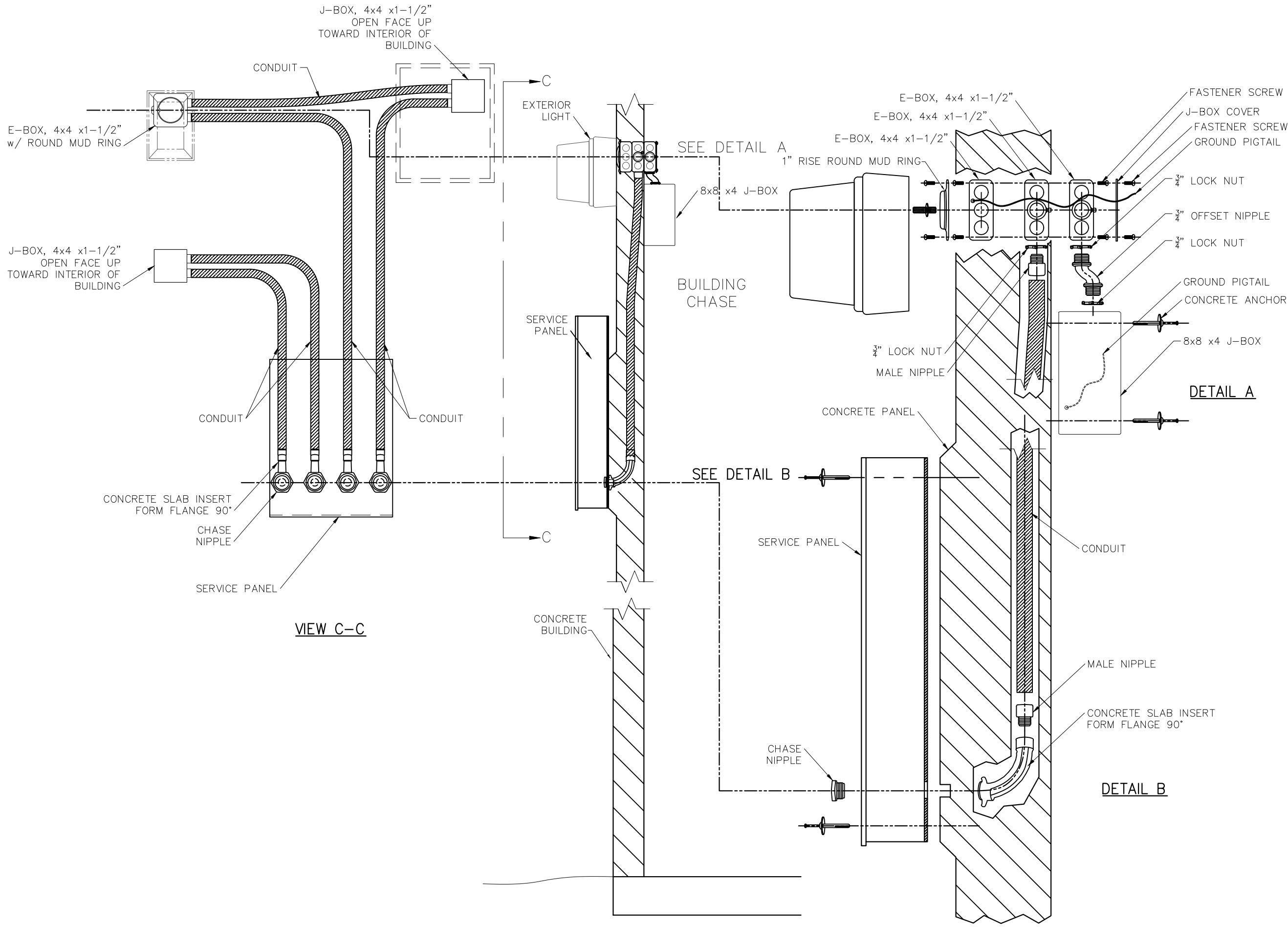
PROJECT TITLE  
**DENALI**  
BUILDING NUMBER DN-374

NOTICE  
The information contained herein is proprietary and the exclusive property of CXT Incorporated. The information may only be used by the original recipient for the purpose intended. Reproduction or distribution of this information is strictly prohibited without the prior written consent of CXT Incorporated. By allowing use of this information, CXT Incorporated grants no warranty, express or implied, including a warranty of merchantability or of fitness for a particular purpose.

REV.	DESCRIPTION	APPROVAL	DATE
SCALE	3/16"=1'-0"	DATE	5/18/22
DRAWN	C.WISSER	FILE NO.	DN-374
CHECKED	MCT	PLOT	64

<b>ELECTRICAL PLAN</b>			
DWG NO.	SHEET	REV.	
DN-22	22	24	0





CXT INCORPORATED  
CONTROLLED COPY  
IF THIS STATEMENT IS NOT PRINTED  
IN RED, DOCUMENT MAY NOT BE CURRENT  
ISSUED FOR PRODUCTION BY: MICHAEL C. TOLMAN



6701 E Flamingo Ave Bldg 300 Nampa, ID 83687  
901 N. Highway 77 Hillsboro, TX 76645  
362 Waverly Road Williamstown, WV 26187

PROJECT TITLE  
**DENALI**  
BUILDING NUMBER DN-374

NOTICE  
The information contained herein is proprietary and the exclusive property of CXT Incorporated. The information may only be used by the original recipient for the purpose intended. Reproduction or distribution of this information is strictly prohibited without the prior written consent of CXT Incorporated. By allowing use of this information, CXT Incorporated grants no warranty, express or implied, including a warranty of merchantability or of fitness for a particular purpose.  
CXT Incorporated

REV.	DESCRIPTION	DATE	APPROVAL	DATE
SCALE	N/A	DATE		5/18/22
DRAWN	C.WISSER	FILE NO.	DN-374	
CHECKED	MCT	PLOT	N/A	

**ELECTRICAL PANEL  
ASSEMBLY DETAILS**

DWG NO.	SHEET	REV.
DN-23	23	0
	24	

