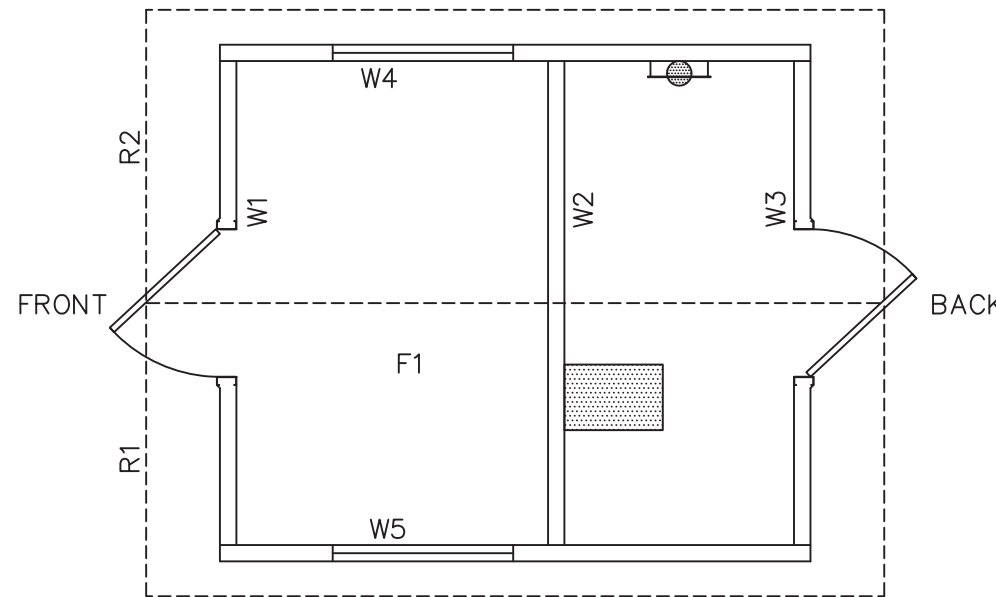


# OZARK 1 SINGLE FLUSH TOILET BUILDING

## PANEL MARK NO. KEY PLAN

### NOTES

1. BUILDING IS DESIGNED TO COMPLY WITH THE 2012 INTERNATIONAL BUILDING CODE (IBC)
2. DESIGN COMPLIES WITH THE PROVISIONS OF THE 2012 IBC FOR THE FOLLOWING LOADS:  
 GROUND SNOW LOAD = 250 PSF  
 FLOOR LOAD = 400 PSF  
 IBC DESIGN SPECTRAL RESPONSE  $S_s = 0.411$ ,  $S_1 = 0.132$   
 SITE CLASS D  
 SEISMIC USE GROUP: II  
 SEISMIC DESIGN CATEGORY: C  
 BEARING WALL SYSTEM  $R = 4.0$   
 BASIC WIND SPEED = 150 MPH (3-SECOND GUST),  
 WIND EXPOSURE C,  $I = 1.0$
3. CONSTRUCTION TYPE: V-B  
 OCCUPANCY: B  
 EXTERIOR WALLS: 1-HR RATED PER IBC TABLE 721.1(2), ITEM 4-1.1  
 MINIMUM FIRE SEPARATION DISTANCE: 10 FEET
4. CONCRETE STRENGTH  $f'_{ci} = 2500$  PSI INITIAL  $f'_c = 5000$  PSI  
 FINAL AIR ENTRAINMENT  $6\% \pm 1\ 1/2\%$  IN PLASTIC CONCRETE.  
 REINFORCING STEEL: GRADE 60  $F_y=60$  KSI  
 MINIMUM LAP 18" AT SPLICES. TIE BARS DOUBLE ANNEALED 16 GA  
 IRON WIRE. REINFORCING TO BE PLACED IN CENTER OF PANEL UNO.  
 WELDED WIRE FABRIC(W.W.F.): 4x4xW8xW8,  $F_y=65$  KSI (OR EQUIVAL).  
 COMPLY WITH ASTM A82, SMOOTH WIRE, MIN. LAP 2 SQUARES.
5. EMBEDDED ITEMS IDENTIFIED ON DRAWINGS(i.e. PS-2, R301) REFER TO CXT STANDARD EMBEDMENT CATALOG.
6. BACK OF PANELS TO HAVE SMOOTH TROWEL FINISH U.N.O. ALL SURFACES TO BE TEXTURED ARE NOTED ON PANEL DWG'S
7. REFER TO SEPARATE CXT INCORPORATED SPECIFICATIONS COVERING DESIGN, MATERIALS, PRODUCTION, AND INSTALLATION CRITERIA FOR SPECIFIC STYLE OF BUILDING.
8. ADEQUATE PLUMBING FACILITIES MUST BE PROVIDED IN ACCORDANCE WITH 2012 IBC SECTION 2902 (NOT BY CXT)



### APPLICABLE CODES

GEORGIA STATE MINIMUM STANDARDS WITH AMENDMENTS (EFFECTIVE JAN 1, 2018)  
 2012 INTERNATIONAL BUILDING CODE WITH GEORGIA AMENDMENTS (2014, 2015, 2017 & 2018)  
 2012 INTERNATIONAL FIRE CODE WITH GEORGIA AMENDMENTS (2014)  
 2012 INTERNATIONAL PLUMBING CODE WITH GEORGIA AMENDMENTS (2014 & 2015)  
 2012 INTERNATIONAL MECHANICAL CODE WITH GEORGIA AMENDMENTS (2014 & 2015)  
 2012 INTERNATIONAL FUEL GAS CODE WITH GEORGIA AMENDMENTS (2014 & 2015)  
 2017 NATIONAL ELECTRIC CODE  
 2009 INTERNATIONAL ENERGY CONSERVATION CODE WITH GEORGIA SUPPLEMENTS & AMENDMENTS (2011)(2012)

### RULES OF SAFETY FIRE COMMISSIONER

\*NFPA LIFE SAFETY CODE 2012 EDITION WITH GEORGIA AMENDMENTS  
 \*ACCESSIBILITY RULES 2010 EDITION

### SPECIAL CONDITIONS AND/OR LIMITATIONS

ACCESSIBILITY TO THIS BUILDING, INCLUDING PARKING IS TO BE PROVIDED BY OTHERS AND CONSTRUCTED IN ACCORDANCE WITH ALL LOCAL BUILDING CODES

### INDEX OF DRAWINGS

NO.	TITLE
OZ 1-01	COVER SHEET
OZ 1-02	BUILDING ELEVATIONS
OZ 1-03	INTERIOR ELEVATIONS
OZ 1-04	FLOOR PLAN
OZ 1-05	FINISH DETAILS
OZ 1-06	CASTING DETAILS
OZ 1-07	FLOOR SLAB MARK F1
OZ 1-08	WALL PANEL MARK W1
OZ 1-09	WALL PANEL MARK W2
OZ 1-10	WALL PANEL MARK W3
OZ 1-11	WALL PANEL MARK W4
OZ 1-12	WALL PANEL MARK W5
OZ 1-13	ROOF SLAB MARK R1
OZ 1-14	ROOF SLAB MARK R2
OZ 1-15	RIGGING DETAILS
OZ 1-16	PLUMBING PLAN, DIAGRAMS & SCHEDULES
OZ 1-17	ELECTRICAL PLAN, DETAILS & SCHEDULES
OZ 1-18	FLOOR DRAIN BLOCKOUTS & BELOW FLOOR PIPING
OZ 1-19	FOUNDATION DETAIL
OZ 1-20	MATERIAL LIST



May 18, 2019



PROJECT TITLE  
**OZARK 1**  
 BUILDING NUMBER OZ1-232

NOTICE  
 The information contained herein is proprietary and the exclusive property of CXT Incorporated. The information may only be used by the original recipient for the purpose intended. Reproduction or distribution of this information is strictly prohibited without the prior written consent of CXT Incorporated. By allowing use of this information, CXT Incorporated grants no warranty, express or implied, including a warranty of merchantability or of fitness for a particular purpose.  
 CXT Incorporated

REV.	DESCRIPTION	APPROVAL	DATE
SCALE	1/4"=1'-0"	DATE	05-07-19
DRAWN	DANA B	FILE NO.	OZ1-232
CHECKED	RDW	PLOT	48

COVER SHEET

DWG NO.	SHEET	REV.
OZ 1-01	1	20

**State of Georgia**  
 These prints comply with the Rules of the Commissioner of Community Affairs 110-2 Industrialized Buildings and adhere to the following:

Const. Type: V-B

Occupancy: B

Wind Velocity: 150/C MPH

Allowable # of Floors: 1

Allowable Floor Load: 400 PSF

Seismic Design Category: C

Fire Rating of Exterior Walls: 1 HRS

Plan #: 2019-4264

Apprv. By: Ian Henderson

Apprv. Date: 05/20/2019

GA, DCA Approved Third Party  
Progressive Engineering Inc.  
58640 State Road 15 Goshen, IN 46528 Ph: (574) 533-0337

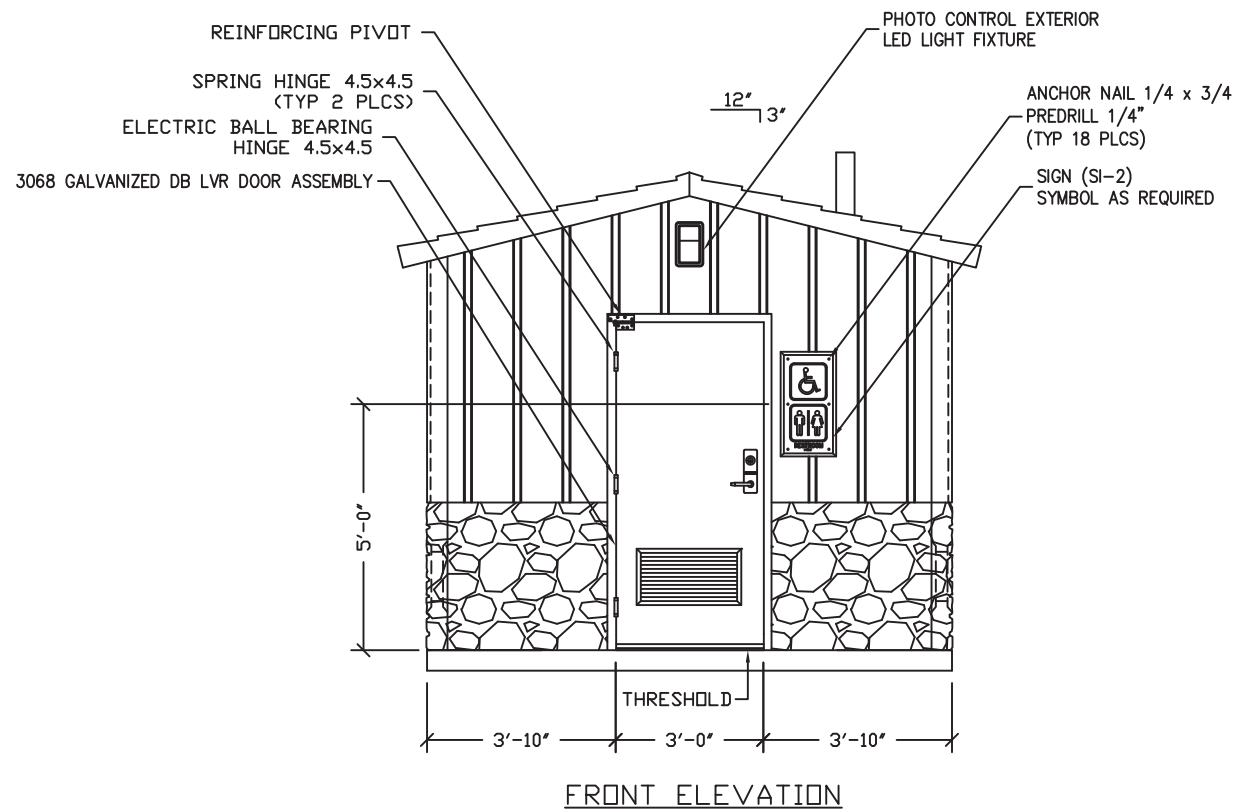
CASTING TOLERANCES:	
OVERALL LENGTH OR WIDTH	10 FT OR UNDER = $\pm 1/8"$
	10 TO 20 FT = $\pm 1/8"$ , -3/16"
	20 TO 40 FT = $\pm 1/4"$
TOTAL THICKNESS	= -1/8, +1/4
VARIATION FROM SQUARE	= $\pm 1/8$ PER 6 FT OF DIAGONAL
LOCAL SMOOTHNESS	= 1/4" IN 10 FT
SWEEP	= $\pm 1/4"$
POSITION OF TENDONS	= $\pm 1/4"$
POSITION OF BLOCKOUTS	= $\pm 1/4"$
SIZE OF BLOCKOUTS	= $\pm 1/4"$
POSITION OF EMBEDS	= $\pm 1/4"$
TIPPING AND FLUSHNESS OF PLATES	= +1/16, -1/4
BOWING	= LENGTH/360
END SQUARENESS	= $\pm 1/8"$

### GEORGIA STATE APPROVAL AND TAG REQUIRED

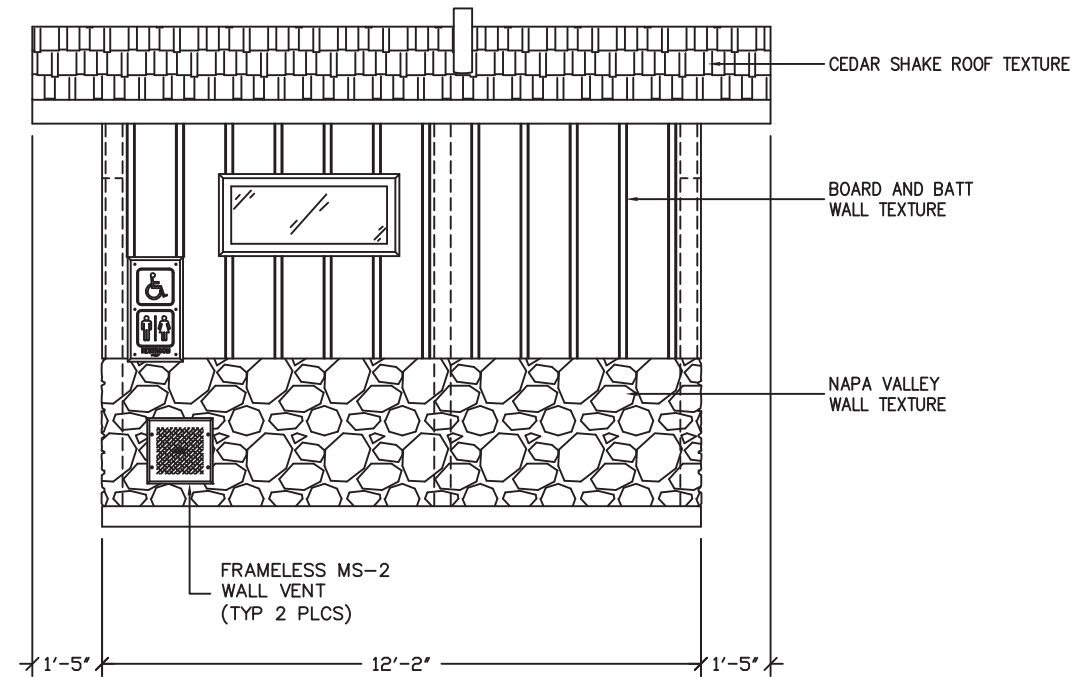
WALL TEXTURE: BOARD AND BATT / NAPA VALLEY  
 WALL COLOR: RICH EARTH  
 STONE COLOR: MOUNTAIN BLEND

ROOF TEXTURE: CEDAR SHAKE  
 ROOF COLOR: HUNTER GREEN

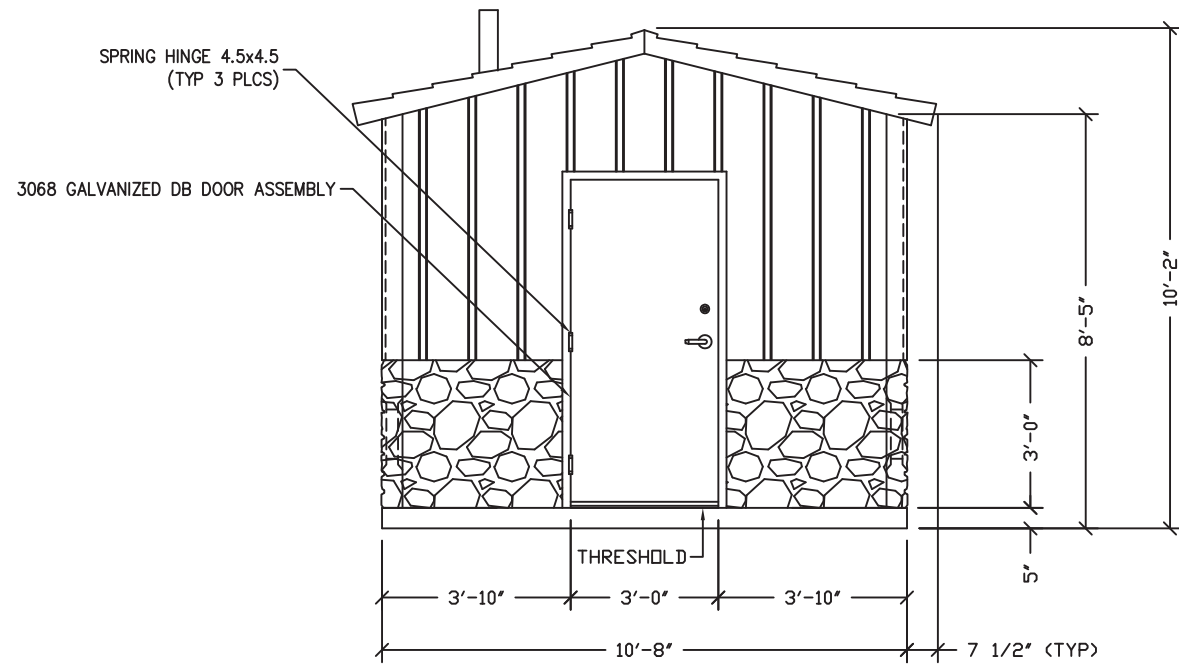
TRIM PAINT: DTM ALKYD ENAMEL BROWN



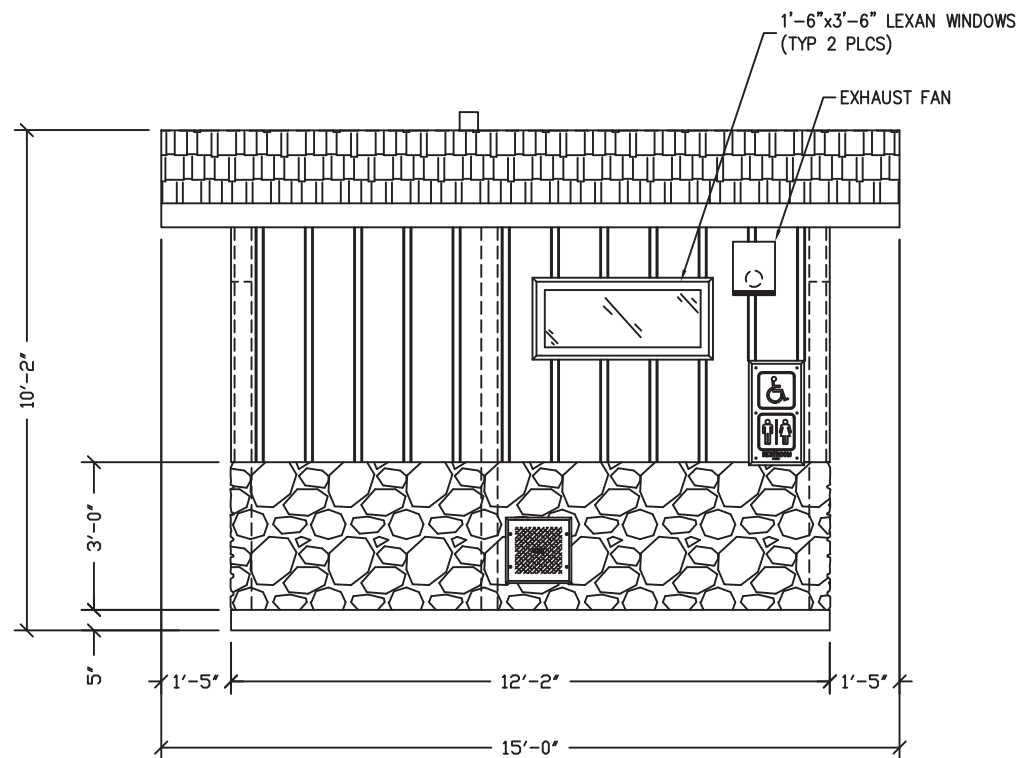
FRONT ELEVATION



RIGHT END ELEVATION



BACK ELEVATION



LEFT END ELEVATION

**State of Georgia**  
 These prints comply with the Rules of the Commissioner of Community Affairs 110-2 Industrialized Buildings and adhere to the following:

Const. Type: V-B  
 Occupancy: B  
 Wind Velocity: 150/C MPH  
 Allowable # of Floors: 1  
 Allowable Floor Load: 400 PSF  
 Seismic Design Category: C  
 Fire Rating of Exterior Walls: 1 HRS  
 Plan #: 2019-4264  
 Apprv. By: Jan Henderson  
 Apprv. Date: 05/20/2019  
 GA. DCA Approved Third Party  
*Progressive Engineering Inc.*  
 58640 State Road 15 Goshen, IN 46528 Ph: (574) 535-0387



May 18, 2019

**CXT**  
 Precast Products

901 N. Highway 77 Hillsboro, TX 76645

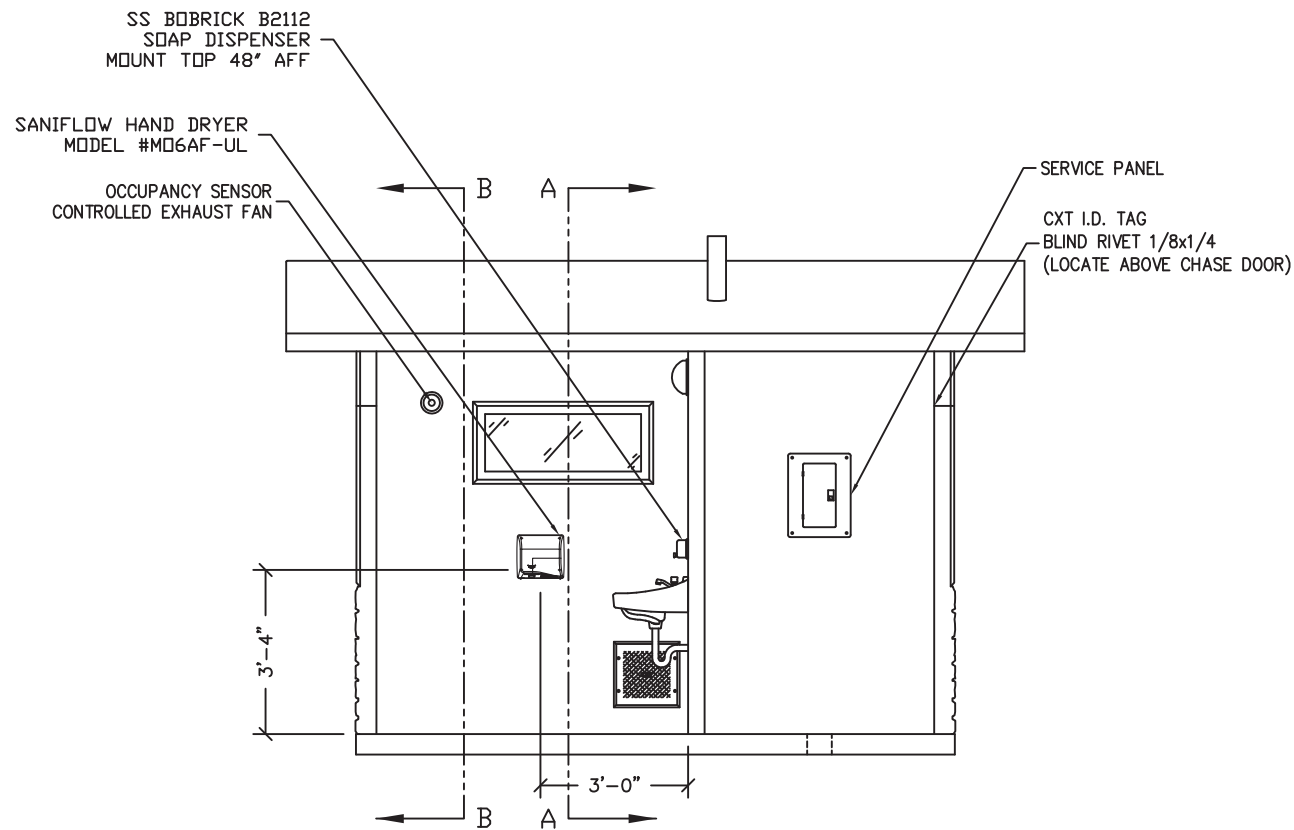
PROJECT TITLE  
**OZARK 1**  
 BUILDING NUMBER OZ1-232

NOTICE  
 The information contained herein is proprietary and the exclusive property of CXT Incorporated. The information may only be used by the original recipient for the purpose intended. Reproduction or distribution of this information is strictly prohibited without the prior written consent of CXT Incorporated. By allowing use of this information, CXT Incorporated grants no warranty, express or implied, including a warranty of merchantability or of fitness for a particular purpose.  
 CXT Incorporated

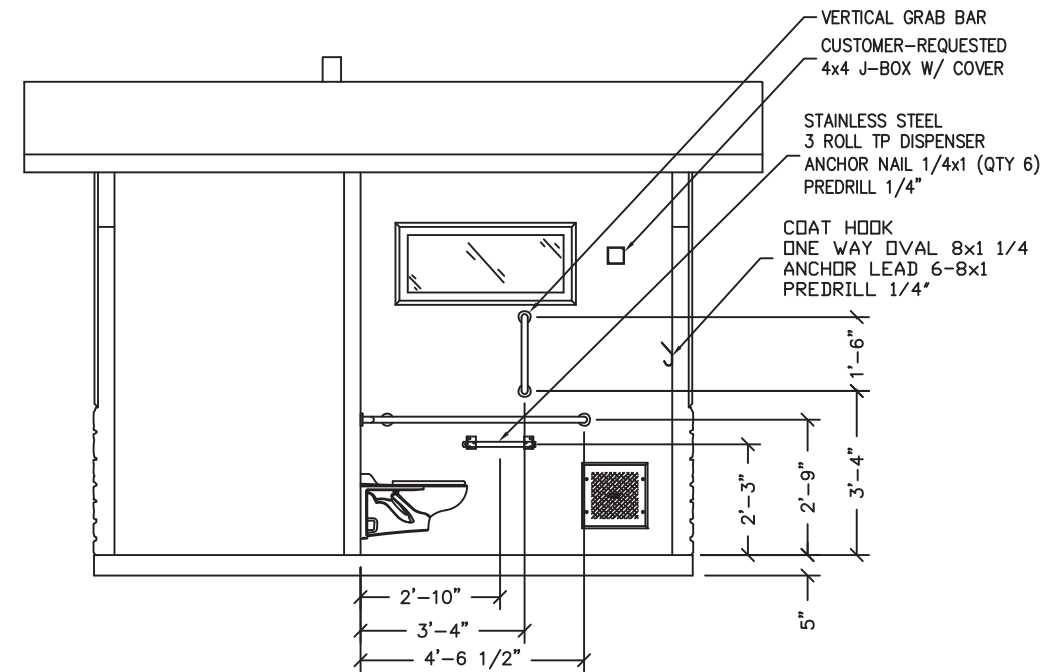
REV.	DESCRIPTION	DATE	APPROVAL	DATE
SCALE	1/4"=1'-0"	DATE		05-07-19
DRAWN	DANA B	FILE NO.	OZ1-232	
CHECKED	RDW	PLOT	48	

**BUILDING ELEVATIONS**

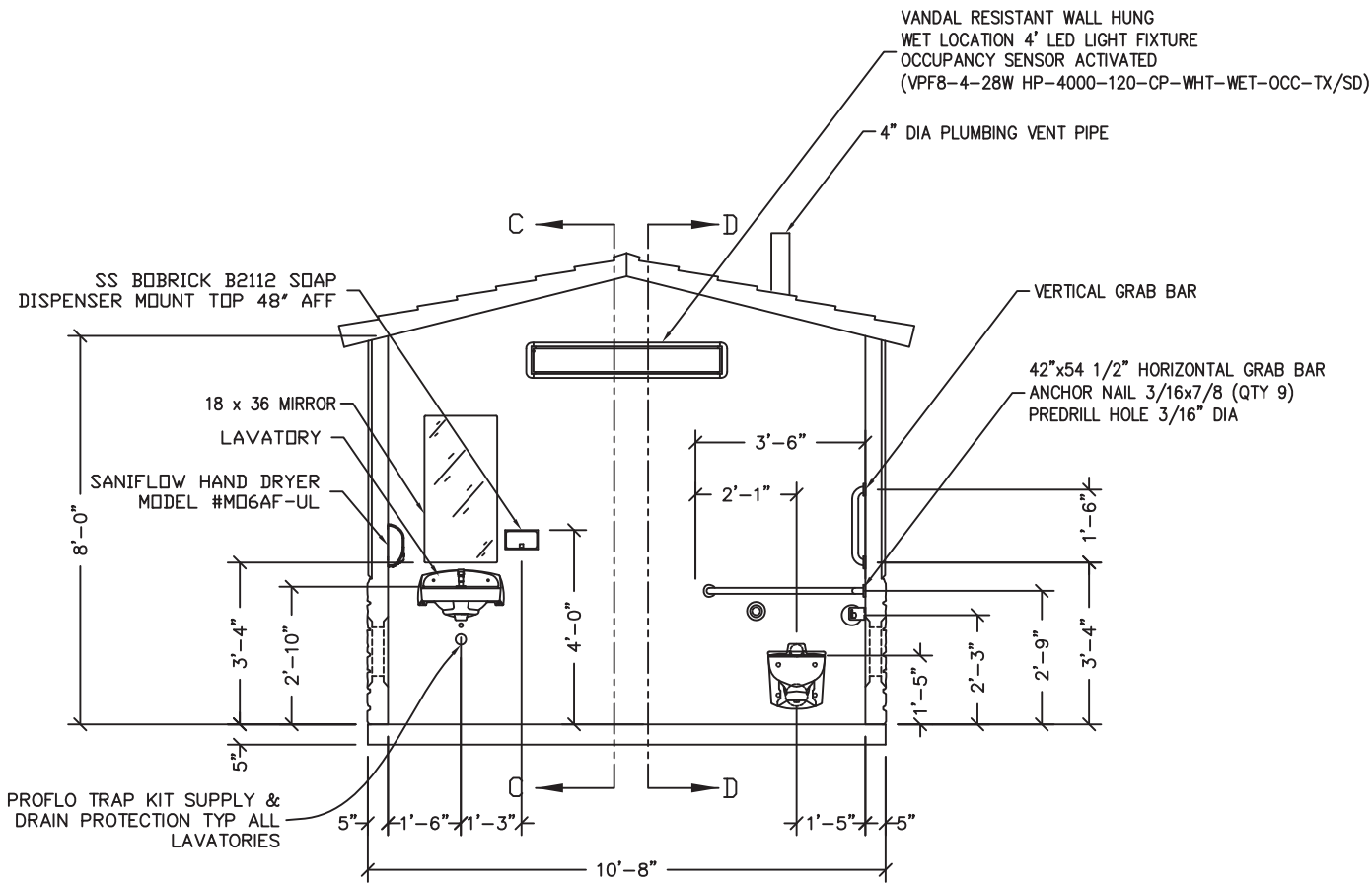
DWG NO.	SHEET	REV.
OZ 1-02	2	20



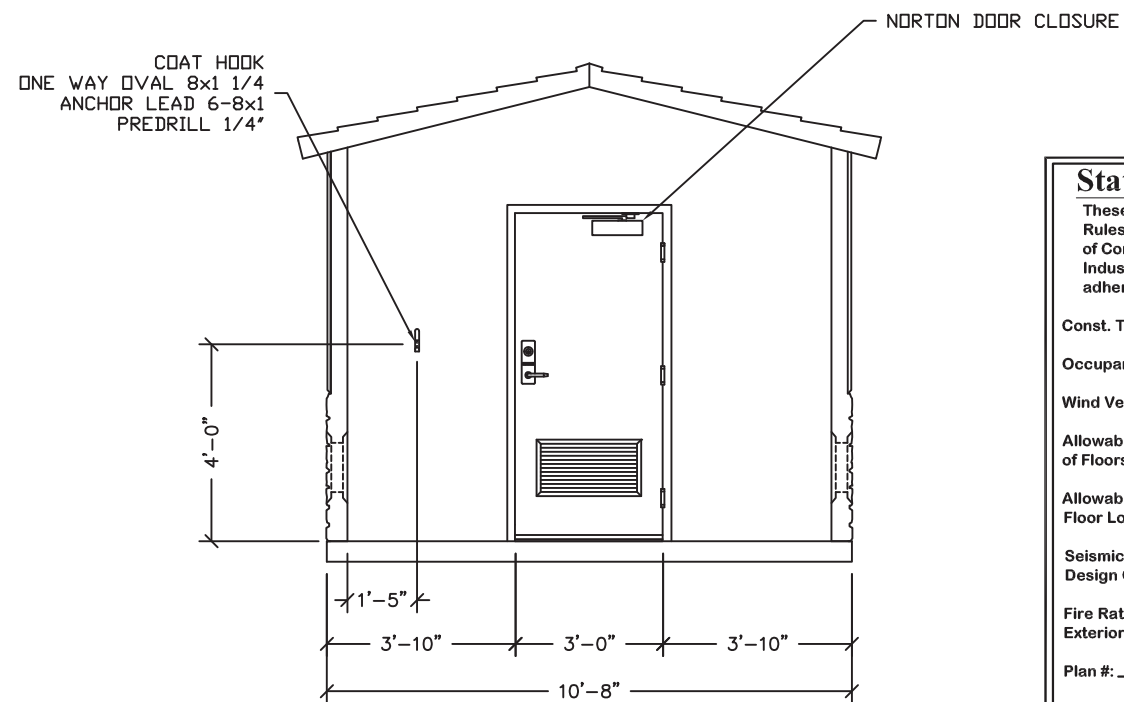
SECTION C - C



SECTION D - D



SECTION A - A



SECTION B - B

EMBEDDED MATERIALS	
ITEM	QTY
GRAB BAR	1
TP DISPENSER	1
TOILET PAPER ROLL	3
COAT HOOK	1
DOOR STOP	1
VERTICAL GRAB BAR	1
CXT I.D. TAG	1
ANCHOR NAIL 1/4x1	6
ANCHOR NAIL 1/4x3/4	12
ANCHOR NAIL 3/16x7/8	9
ONE WAY OVAL 8x1 1/4	2
ANCHOR LEAD 6-8x1	2
BLIND RIVET 1/8x1/4	2
NORTON DOOR CLOSURE	1
BOBRICK SOAP DISPENSER	1

CU. FT. CONC.      SQ. FT. W.W.F.

APPROXIMATE WEIGHT



May 18, 2019



901 N. Highway 77 Hillsboro, TX 76645

**State of Georgia**

These prints comply with the Rules of the Commissioner of Community Affairs 110-2 Industrialized Buildings and adhere to the following:

Const. Type: V-B

Occupancy: B

Wind Velocity: 150/C MPH

Allowable # of Floors: 1

Allowable Floor Load: 400 PSF

Seismic Design Category: C

Fire Rating of Exterior Walls: 1 HRS

Plan #: 2019-4264

Apprv. By: Ian Henderson

Apprv. Date: 05/20/2019

GA. DCA Approved Third Party

*Progressive Engineering Inc.*  
58640 State Road 15 Goshen, IN 46528 Ph: (574) 533-0337

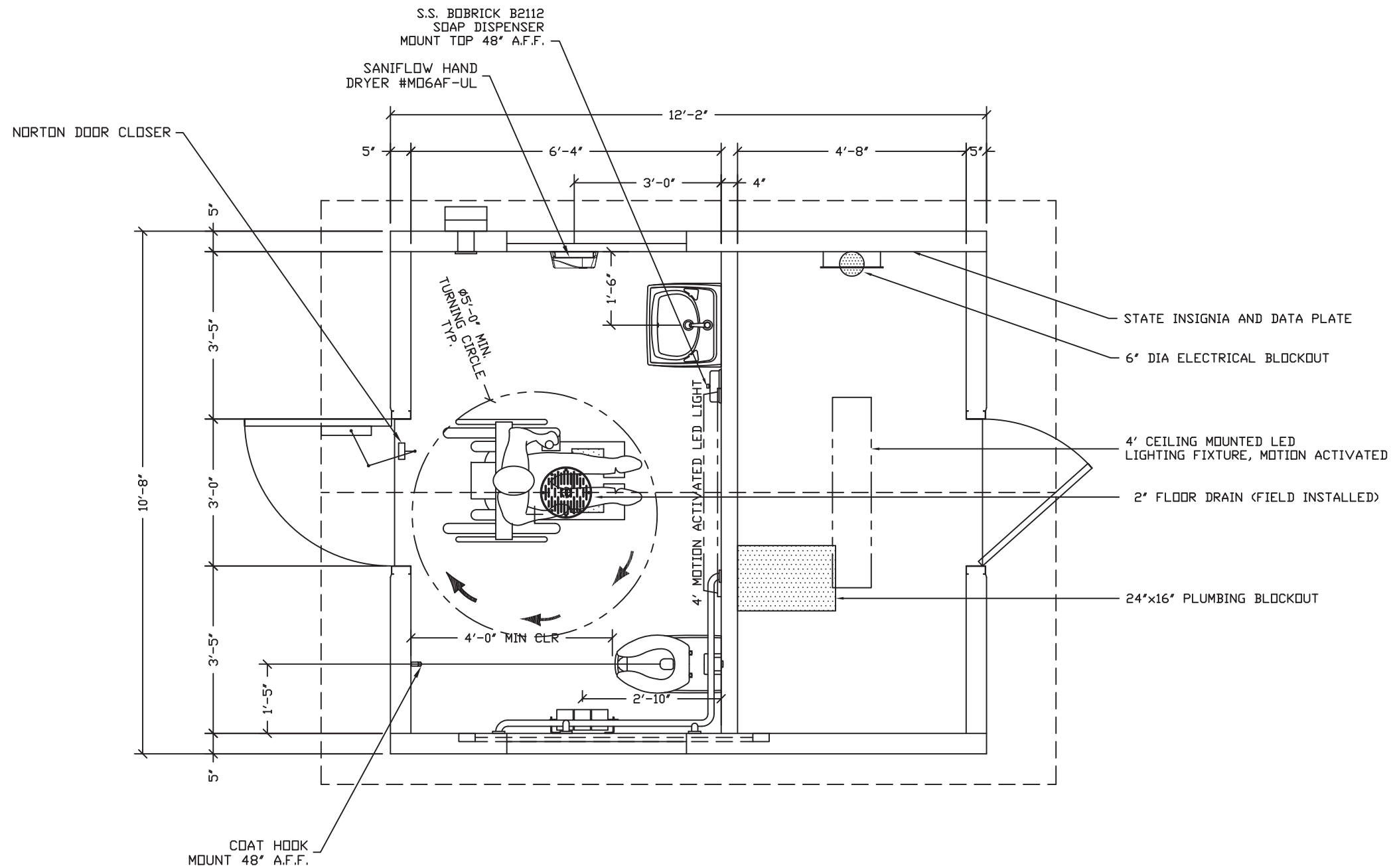
PROJECT TITLE  
**OZARK 1**  
BUILDING NUMBER OZI-232

NOTICE  
The information contained herein is proprietary and the exclusive property of CXT Incorporated. The information may only be used by the original recipient for the purpose intended. Reproduction or distribution of this information is strictly prohibited without the prior written consent of CXT Incorporated. By allowing use of this information, CXT Incorporated grants no warranty, express or implied, including a warranty of merchantability or of fitness for a particular purpose.  
CXT Incorporated

REV.	DESCRIPTION	DATE	APPROVAL	DATE
SCALE	1/4"=1'-0"	DATE		05-07-19
DRAWN	DANA B	FILE NO.	OZI-232	
CHECKED	RDW	PLOT	48	

**INTERIOR ELEVATIONS**

DWG NO.	SHEET	REV.
OZ 1-03	3	
	20	



FLOOR PLAN



May 18, 2019

<b>State of Georgia</b>	
These prints comply with the Rules of the Commissioner of Community Affairs 110-2 Industrialized Buildings and adhere to the following:	
Const. Type:	V-B
Occupancy:	B
Wind Velocity:	150/C MPH
Allowable # of Floors:	1
Allowable Floor Load:	400 PSF
Seismic Design Category:	C
Fire Rating of Exterior Walls:	1 HRS
Plan #:	2019-4264
Apprv. By:	Ian Henderson
Apprv. Date:	05/20/2019
GA. DCA Approved Third Party	
Progressive Engineering Inc.	
58640 State Road 15 Goshen, IN 46528 Ph: (574) 533-0337	



901 N. Highway 77 Hillsboro, TX 76645

PROJECT TITLE  
**OZARK 1**  
BUILDING NUMBER OZ1-232

NOTICE  
The information contained herein is proprietary and the exclusive property of CXT Incorporated. The information may only be used by the original recipient for the purpose intended. Reproduction or distribution of this information is strictly prohibited without the prior written consent of CXT Incorporated. By allowing use of this information, CXT Incorporated grants no warranty, express or implied, including a warranty of merchantability or of fitness for a particular purpose.

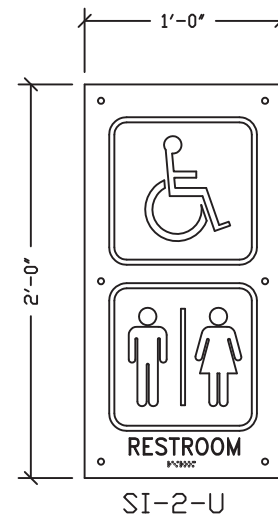
REV.	DESCRIPTION	APPROVAL	DATE
SCALE	3/8"=1'-0"	DATE	05-07-19
DRAWN	DANA B	FILE NO.	OZ1-232
CHECKED	RDW	PLOT	32

FLOOR PLAN

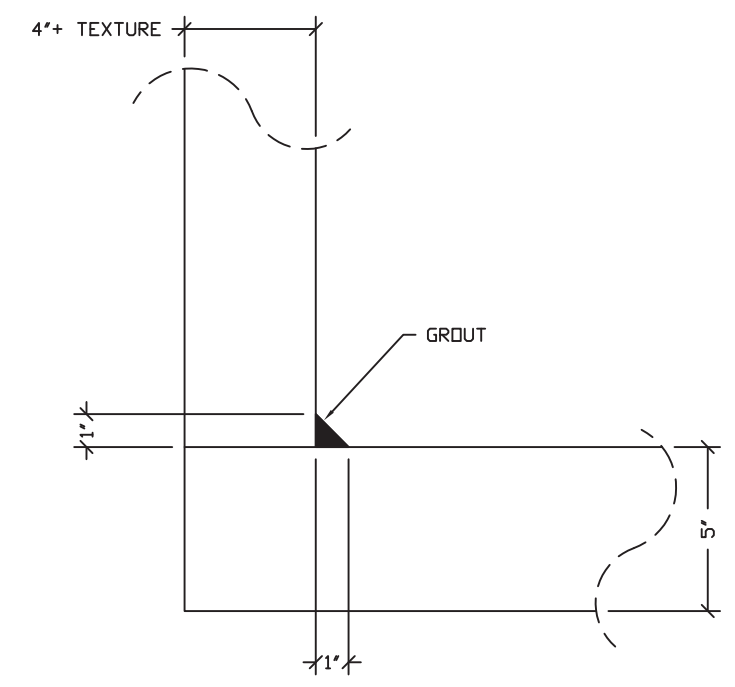
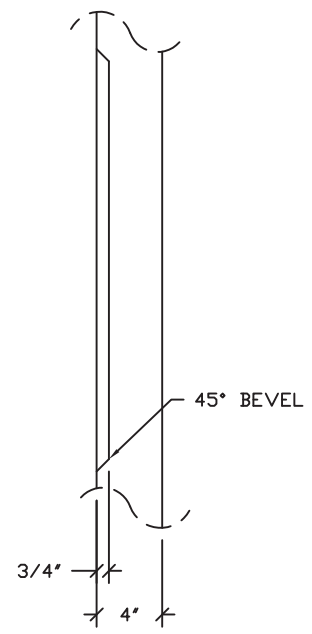
NOTE:

ELECTRICAL AND PLUMBING COMPONENTS ARE SHOWN FOR GENERAL ARRANGEMENT ONLY. SEE SHEETS OZ 1-16 THRU OZ 1-19 FOR COMPLETE SYSTEM DESCRIPTIONS.

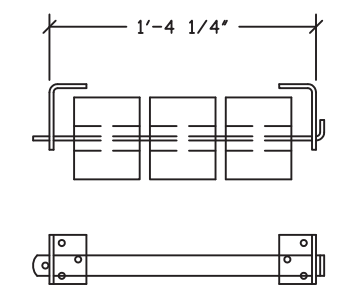
DWG NO.	SHEET	REV.
OZ 1-04	4	20



SIGN SI-2 DETAIL



WALL JOINT DETAIL



DISPENSER DETAIL

**State of Georgia**  
 These prints comply with the Rules of the Commissioner of Community Affairs 110-2 Industrialized Buildings and adhere to the following:

Const. Type: V-B  
 Occupancy: B  
 Wind Velocity: 150/C MPH  
 Allowable # of Floors: 1  
 Allowable Floor Load: 400 PSF  
 Seismic Design Category: C  
 Fire Rating of Exterior Walls: 1 HRS  
 Plan #: 2019-4264  
 Apprv. By: Ian Henderson  
 Apprv. Date: 05/20/2019  
 GA. DCA Approved Third Party  
*Progressive Engineering Inc.*  
 58640 State Road 15 Goshen, IN 46528 Ph: (574) 533-0337



*W. R. Heiden, III*

May 18, 2019



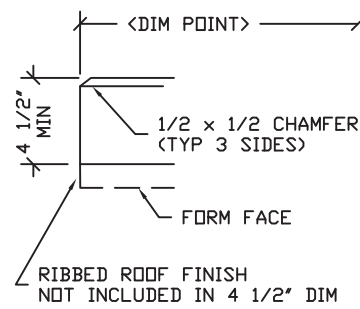
PROJECT TITLE  
**OZARK 1**  
 BUILDING NUMBER OZ1-232

NOTICE  
 The information contained herein is proprietary and the exclusive property of CXT Incorporated. The information may only be used by the original recipient for the purpose intended. Reproduction or distribution of this information is strictly prohibited without the prior written consent of CXT Incorporated. By allowing use of this information, CXT Incorporated grants no warranty, express or implied, including a warranty of merchantability or of fitness for a particular purpose.

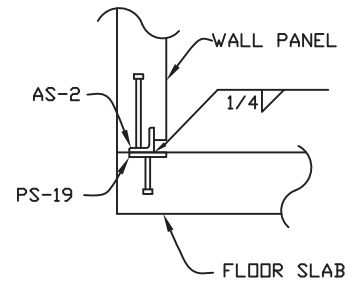
REV.	DESCRIPTION	DATE	APPROVAL	DATE
SCALE	1"=1'-0"	DATE		05-07-19
DRAWN	DANA B	FILE NO.	OZ1-232	
CHECKED	RDW	PLOT	12	

FINISH DETAILS

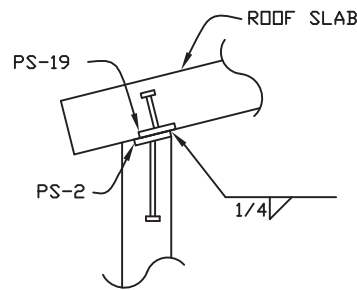
DWG NO.	SHEET	REV.
OZ 1-05	5	
	20	



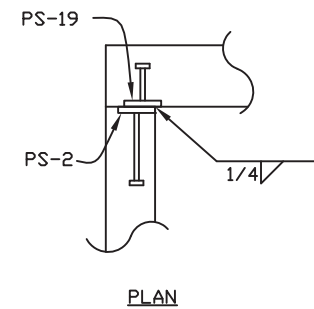
1 TYPICAL ROOF SLAB EDGE



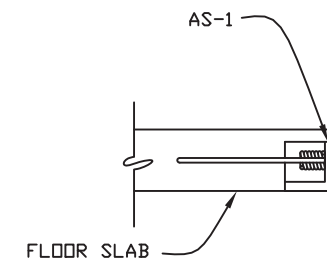
2 TYP. WALL TO FLOOR SLAB WELDED CONNECTION



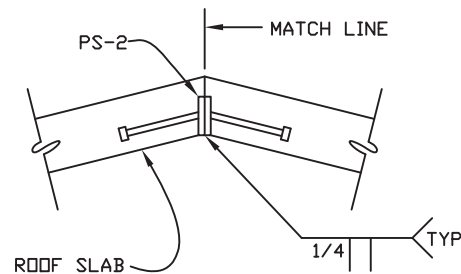
3 TYP. WALL TO ROOF SLAB WELDED CONNECTION



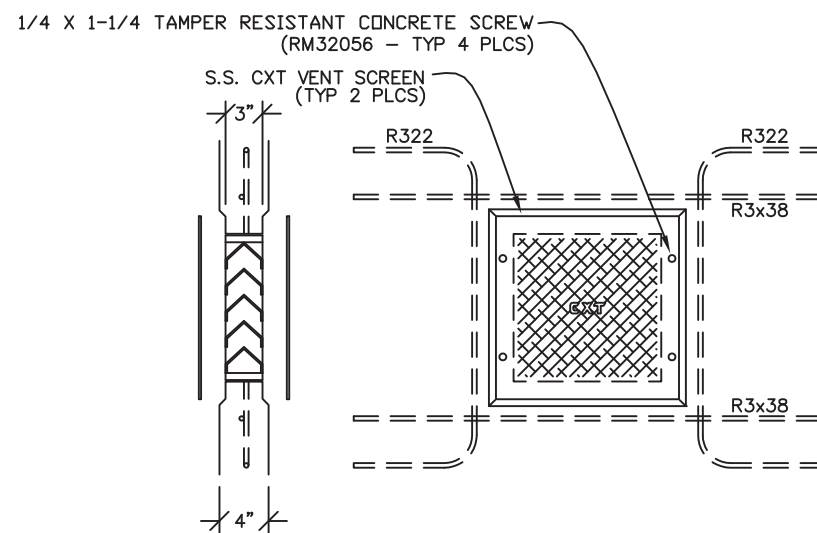
4 TYP. WALL TO WALL PANEL WELDED CONNECTION



5 FLOOR LIFT PLATE DETAIL



6 ROOF PEAK WELDMENT DETAIL



7 STANDARD FRAMELESS MS-2 WALL VENT DETAIL



*W. R. Heiden, III*

May 18, 2019

**State of Georgia**  
 These prints comply with the Rules of the Commissioner of Community Affairs 110-2 Industrialized Buildings and adhere to the following:

Const. Type: V-B  
 Occupancy: B  
 Wind Velocity: 150/C MPH  
 Allowable # of Floors: 1  
 Allowable Floor Load: 400 PSF  
 Seismic Design Category: C  
 Fire Rating of Exterior Walls: 1 HRS  
 Plan #: 2019-4264  
 Apprv. By: Ian Henderson  
 Apprv. Date: 05/20/2019  
 GA. DCA Approved Third Party  
 Progressive Engineering Inc.  
 58640 State Road 15 Goshen, IN 46528 Ph: (574) 533-0337



901 N. Highway 77 Hillsboro, TX 76645

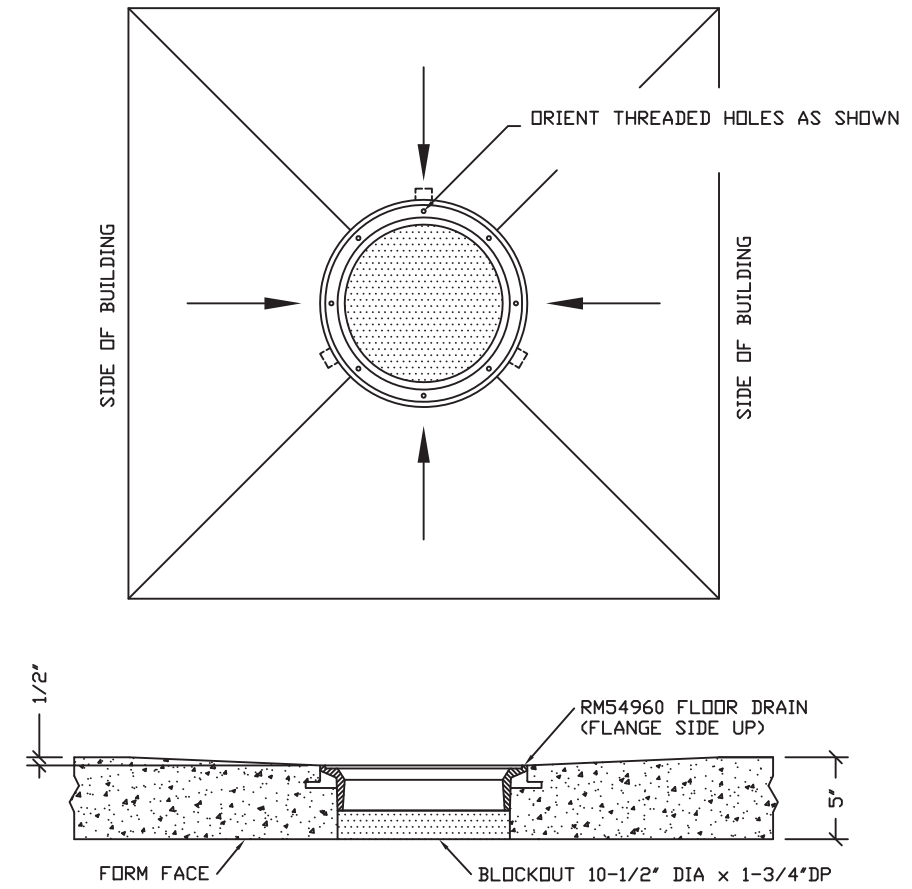
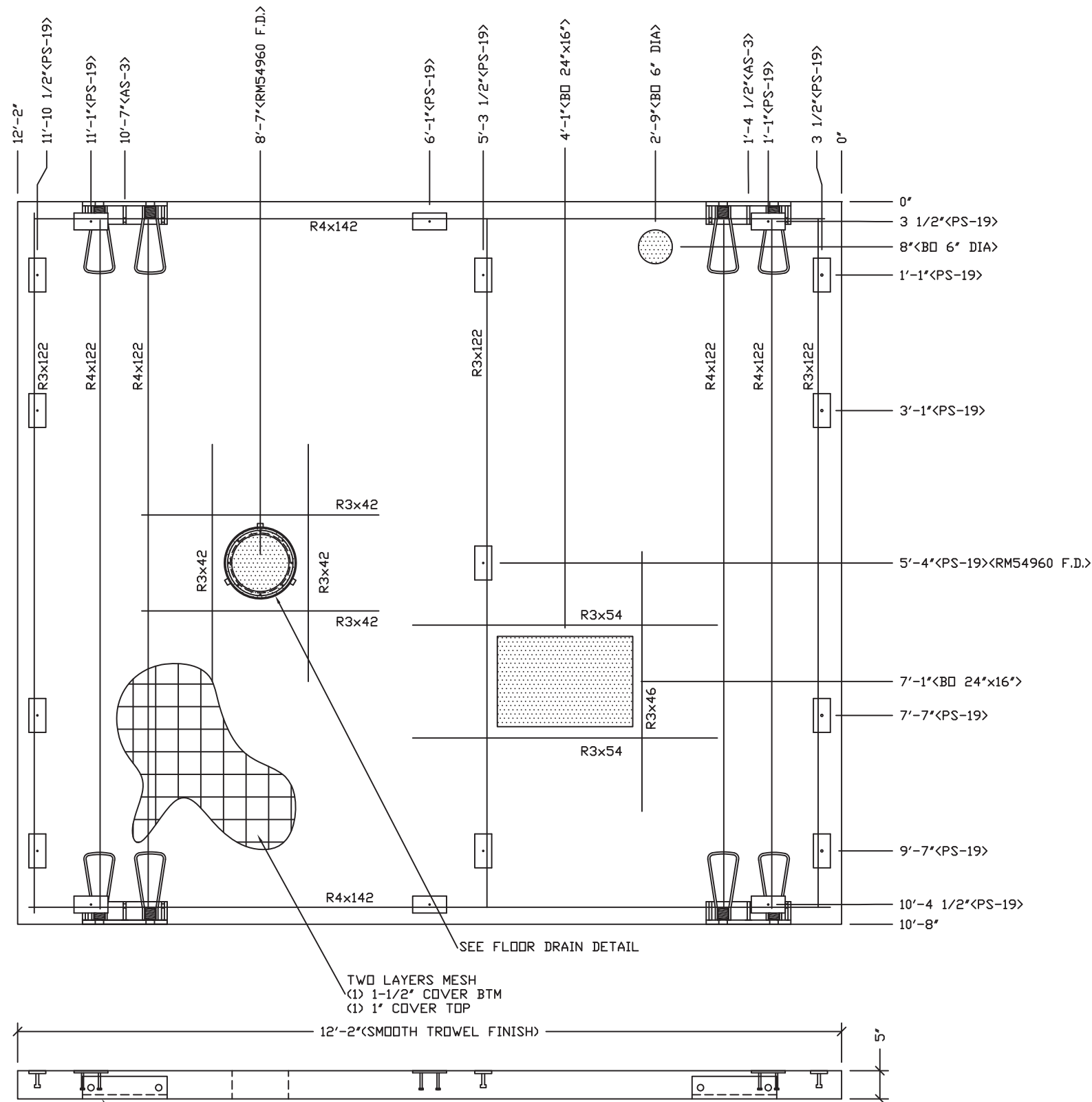
PROJECT TITLE  
**OZARK 1**  
 BUILDING NUMBER OZ1-232

NOTICE  
 The information contained herein is proprietary and the exclusive property of CXT Incorporated. The information may only be used by the original recipient for the purpose intended. Reproduction or distribution of this information is strictly prohibited without the prior written consent of CXT Incorporated. By allowing use of this information, CXT Incorporated grants no warranty, express or implied, including a warranty of merchantability or of fitness for a particular purpose.

REV.	DESCRIPTION	APPROVAL	DATE
SCALE	3/4"=1'-0"	DATE	05-07-19
DRAWN	DANA B	FILE NO.	OZ1-232
CHECKED	RDW	PLOT	16

**CASTING DETAILS**

DWG NO.	SHEET	REV.
OZ 1-06	6	
	20	



FLOOR DRAIN BLOCKOUT DETAIL



**State of Georgia**  
 These prints comply with the Rules of the Commissioner of Community Affairs 110-2 Industrialized Buildings and adhere to the following:

Const. Type: V-B  
 Occupancy: B  
 Wind Velocity: 150/C MPH  
 Allowable # of Floors: 1  
 Allowable Floor Load: 400 PSF  
 Seismic Design Category: C  
 Fire Rating of Exterior Walls: 1 HRS  
 Plan #: 2019-4264  
 Apprv. By: Ian Henderson  
 Apprv. Date: 05/20/2019  
 GA. DCA Approved Third Party  
 Progressive Engineering Inc.  
 58640 State Road 15 Goshen, IN 46528 Ph: (574) 533-0337

- NOTES:
- FLOOR THICKNESS = 5".
  - SMOOTH TROWEL FINISH NEAR FACE, FORM FINISH ALL OTHER.
  - TWO LAYERS 4x4xW8xW8 MESH
  - R3x122, R3x54 & R3x46 TO BE PLACED IN PAIRS, ONE EACH FACE. 1" COVER TOP & 1 1/4" COVER BOT.
  - R4x122 TO BE PLACED AT BOT WITH 1 1/4" COVER.
  - ALL OTHER BARS TO BE CENTERED IN PANEL.
  - R4x140 TO BE PLACED AT TOP WITH 1" COVER.

EMBEDDED MATERIALS	
ITEM	QTY
AS-3	4
PS-19	17
R4x122	4
R4x140	2
R3x42	8
R3x46	2
R3x54	4
R3x122	6
BLOCKOUT 6" DIA	1
BLOCKOUT 24"x16"	1
RM54960 F.D.	1

CU. FT. CONC.	SQ. FT. W.W.F.
52.6 (1.95)	252
APPROXIMATE WEIGHT	
7,890	

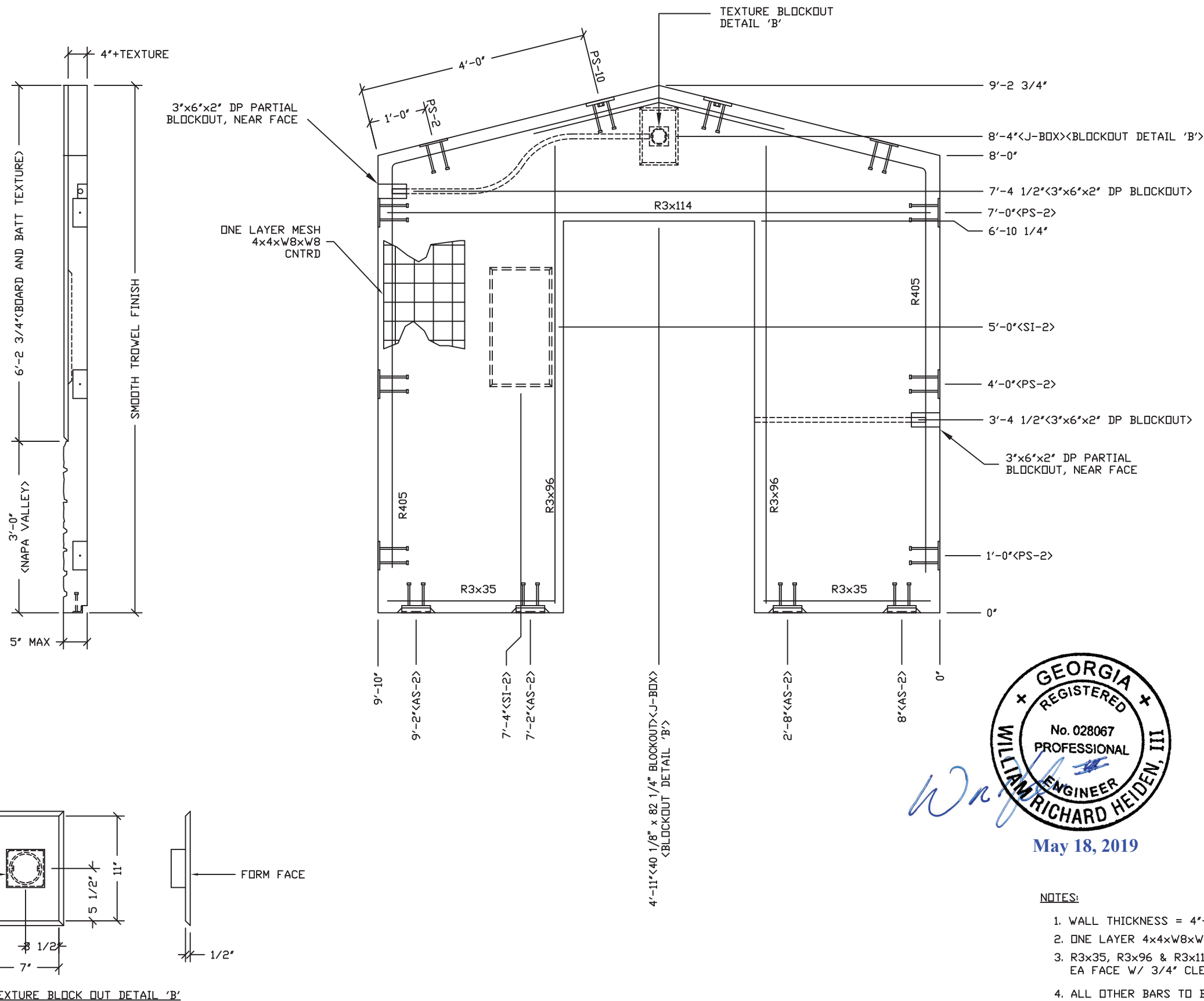


PROJECT TITLE  
**OZARK 1**  
 BUILDING NUMBER OZI-232

NOTICE  
 The information contained herein is proprietary and the exclusive property of CXT Incorporated. The information may only be used by the original recipient for the purpose intended. Reproduction or distribution of this information is strictly prohibited without the prior written consent of CXT Incorporated. By allowing use of this information, CXT Incorporated grants no warranty, express or implied, including a warranty of merchantability or of fitness for a particular purpose.

REV.	DESCRIPTION	DATE	APPROVAL	DATE
SCALE	1/2"=1'-0"	DATE		05-07-19
DRAWN	DANA B	FILE NO.		OZI-232
CHECKED	RDW	PLOT		24

DWG NO.	SHEET	REV.
OZ 1-07	7	20



CU. FT. CONC.	SQ. FT. W.W.F.
22.5 (0.83)	62
APPROXIMATE WEIGHT	
3,375	

**State of Georgia**  
 These prints comply with the Rules of the Commissioner of Community Affairs 110-2 Industrialized Buildings and adhere to the following:

Const. Type: V-B  
 Occupancy: B  
 Wind Velocity: 150/C MPH  
 Allowable # of Floors: 1  
 Allowable Floor Load: 400 PSF  
 Seismic Design Category: C  
 Fire Rating of Exterior Walls: 1 HRS  
 Plan #: 2019-4264  
 Apprv. By: Ian Henderson  
 Apprv. Date: 05/20/2019  
 GA. DCA Approved Third Party  
*Progressive Engineering Inc.*  
 58649 State Road 15 Goshen, IN 46528 Ph: (574) 533-0337



- NOTES:
1. WALL THICKNESS = 4"+TEXTURE.
  2. ONE LAYER 4x4xW8xW8 MESH.
  3. R3x35, R3x96 & R3x114 TO BE PLACE IN PAIRS ONE EA FACE W/ 3/4" CLEAR COVER.
  4. ALL OTHER BARS TO BE CENTERED IN PANEL.

**CXT Precast Products**  
 901 N. Highway 77 Hillsboro, TX 76645

PROJECT TITLE  
**OZARK 1**  
 BUILDING NUMBER OZI-232

NOTICE  
 The information contained herein is proprietary and the exclusive property of CXT Incorporated. The information may only be used by the original recipient for the purpose intended. Reproduction or distribution of this information is strictly prohibited without the prior written consent of CXT Incorporated. By allowing use of this information, CXT Incorporated grants no warranty, express or implied, including a warranty of merchantability or of fitness for a particular purpose.

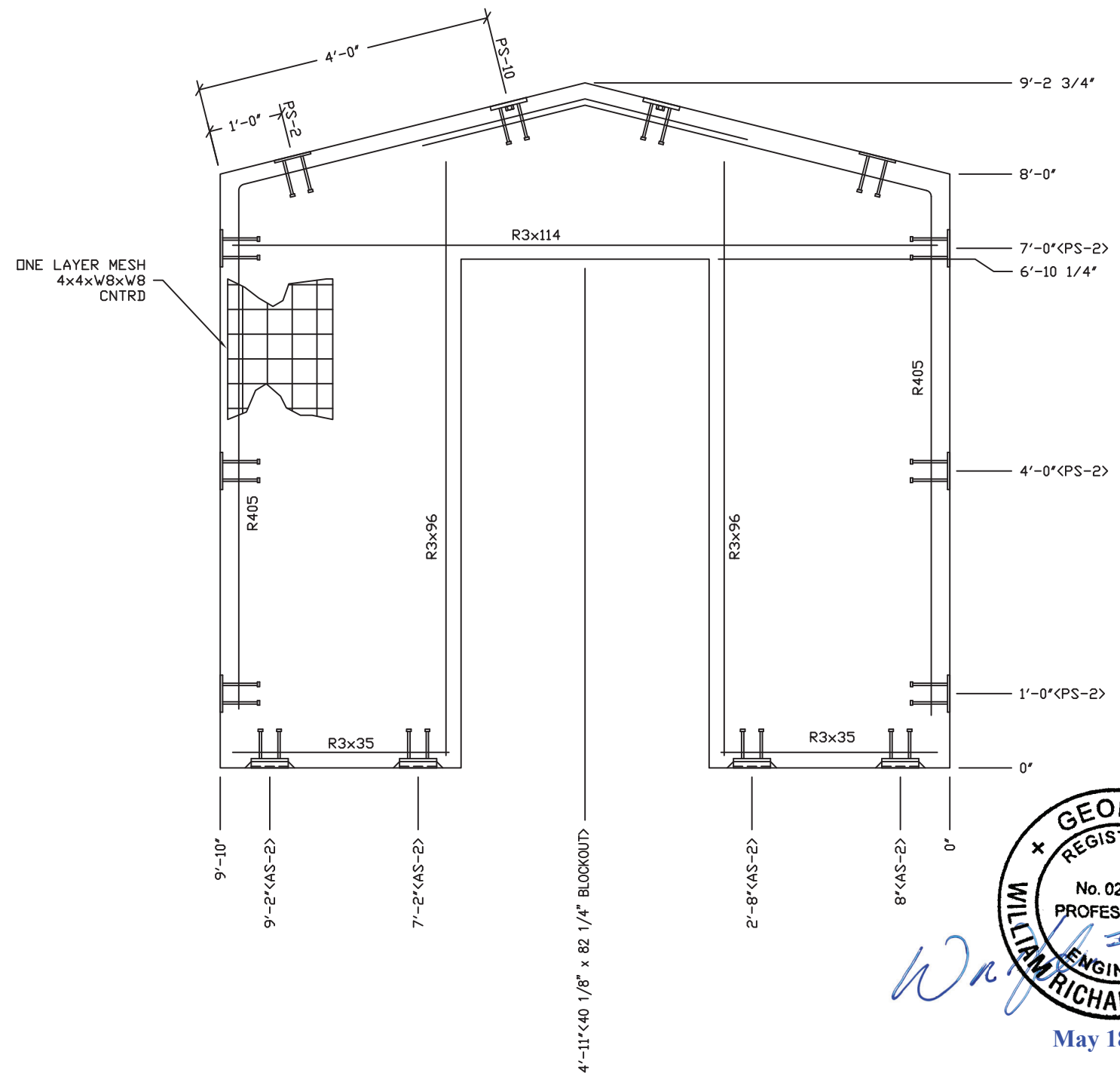
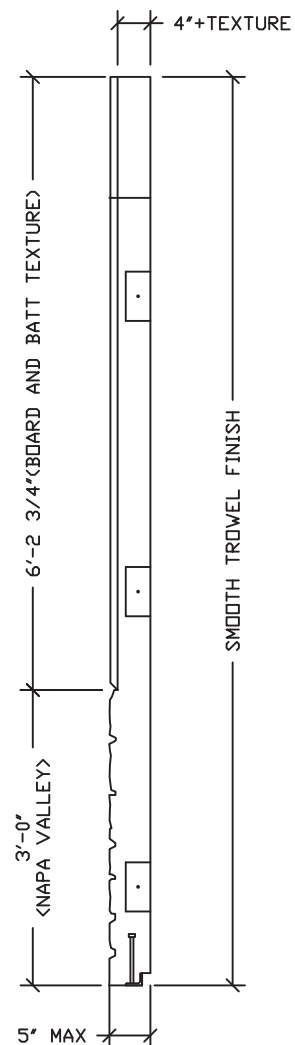
REV.	DESCRIPTION	APPROVAL	DATE
SCALE	1/2"=1'-0"	DATE	05-07-19
DRAWN	DANA B	FILE NO.	OZI-232
CHECKED	RDW	PLOT	24

WALL PANEL MARK W1

DWG NO. **OZ 1-08** SHEET **8** REV. **20**







**NOTES:**

1. WALL THICKNESS = 4"+TEXTURE.
2. ONE LAYER 4x4xW8xW8 MESH.
3. R3x35, R3x96 & R3x114 TO BE PLACE IN PAIRS ONE EA FACE W/ 3/4" CLEAR COVER.
4. ALL OTHER BARS TO BE CENTERED IN PANEL.

**State of Georgia**  
 These prints comply with the Rules of the Commissioner of Community Affairs 110-2 Industrialized Buildings and adhere to the following:

Const. Type: V-B  
 Occupancy: B  
 Wind Velocity: 150/C MPH  
 Allowable # of Floors: 1  
 Allowable Floor Load: 400 PSF  
 Seismic Design Category: C  
 Fire Rating of Exterior Walls: 1 HRS  
 Plan #: 2019-4264  
 Apprv. By: Ian Henderson  
 Apprv. Date: 05/20/2019  
 GA. DCA Approved Third Party  
*Progressive Engineering Inc.*  
 58640 State Road 15 Goshen, IN 46528 Ph: (574) 533-0337

EMBEDDED MATERIALS	
ITEM	QTY
PS-2	8
PS-10	2
R3x114	2
R3x96	4
R3x35	4
R405	2
AS-2	4
40 1/8" x 82 1/4" BO	1

CU. FT. CONC.	SQ. FT. W.W.F.
22.5 (0.83)	62
APPROXIMATE WEIGHT	
3,375	

PROJECT TITLE  
**OZARK 1**  
 BUILDING NUMBER OZ1-232

NOTICE  
 The information contained herein is proprietary and the exclusive property of CXT Incorporated. The information may only be used by the original recipient for the purpose intended. Reproduction or distribution of this information is strictly prohibited without the prior written consent of CXT Incorporated. By allowing use of this information, CXT Incorporated grants no warranty, express or implied, including a warranty of merchantability or of fitness for a particular purpose.

REV.	DESCRIPTION	DATE	APPROVAL	DATE
SCALE	1/2"=1'-0"	DATE		05-07-19
DRAWN	DANA B	FILE NO.		OZ1-232
CHECKED	RDW	PLOT		24

WALL PANEL MARK W3		
DWG NO.	SHEET	REV.
OZ 1-10	10	20

EMBEDDED MATERIALS	
ITEM	QTY
PS-19	9
PS-2	1
PS-10	2
R4x140	4
R4x92	6
MS-6	1
R303	3
AS-2	3
R4x48	2
R322	2
R3x38	2
MS-2 BO	1
B.O. 4 1/2" DIA	1
4x4 J-BOX	4
SI-2 MOLD	1
3" x 8" x 2" DP BLOCKOUT	1
RECT MUD RING	1

CU. FT. CONC. 33.8 (1.25)	SQ. FT. W.W.F. 95
APPROXIMATE WEIGHT 5,070	



PROJECT TITLE  
**OZARK 1**  
BUILDING NUMBER OZ1-232

NOTICE  
The information contained herein is proprietary and the exclusive property of CXT Incorporated. The information may only be used by the original recipient for the purpose intended. Reproduction or distribution of this information is strictly prohibited without the prior written consent of CXT Incorporated. By allowing use of this information, CXT Incorporated grants no warranty, express or implied, including a warranty of merchantability or of fitness for a particular purpose.

REV.	DESCRIPTION	DATE	APPROVAL	DATE
SCALE	1/2"=1'-0"	DATE	05-07-19	
DRAWN	DANA B	FILE NO.	OZ1-232	
CHECKED	RDW	PLOT	24	

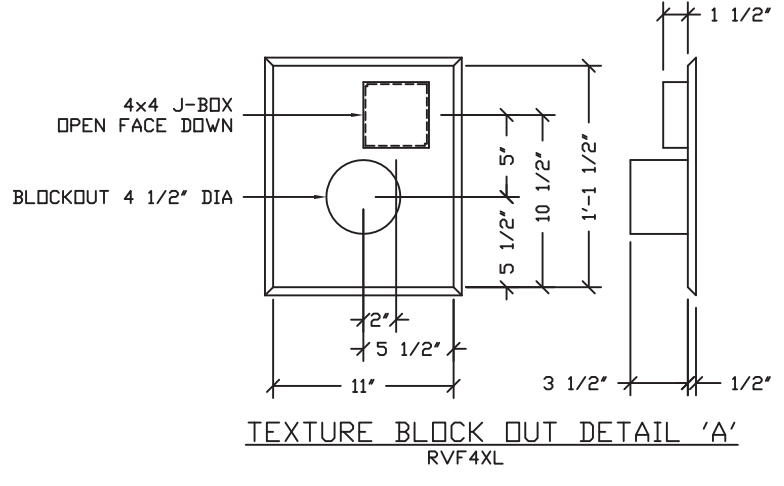
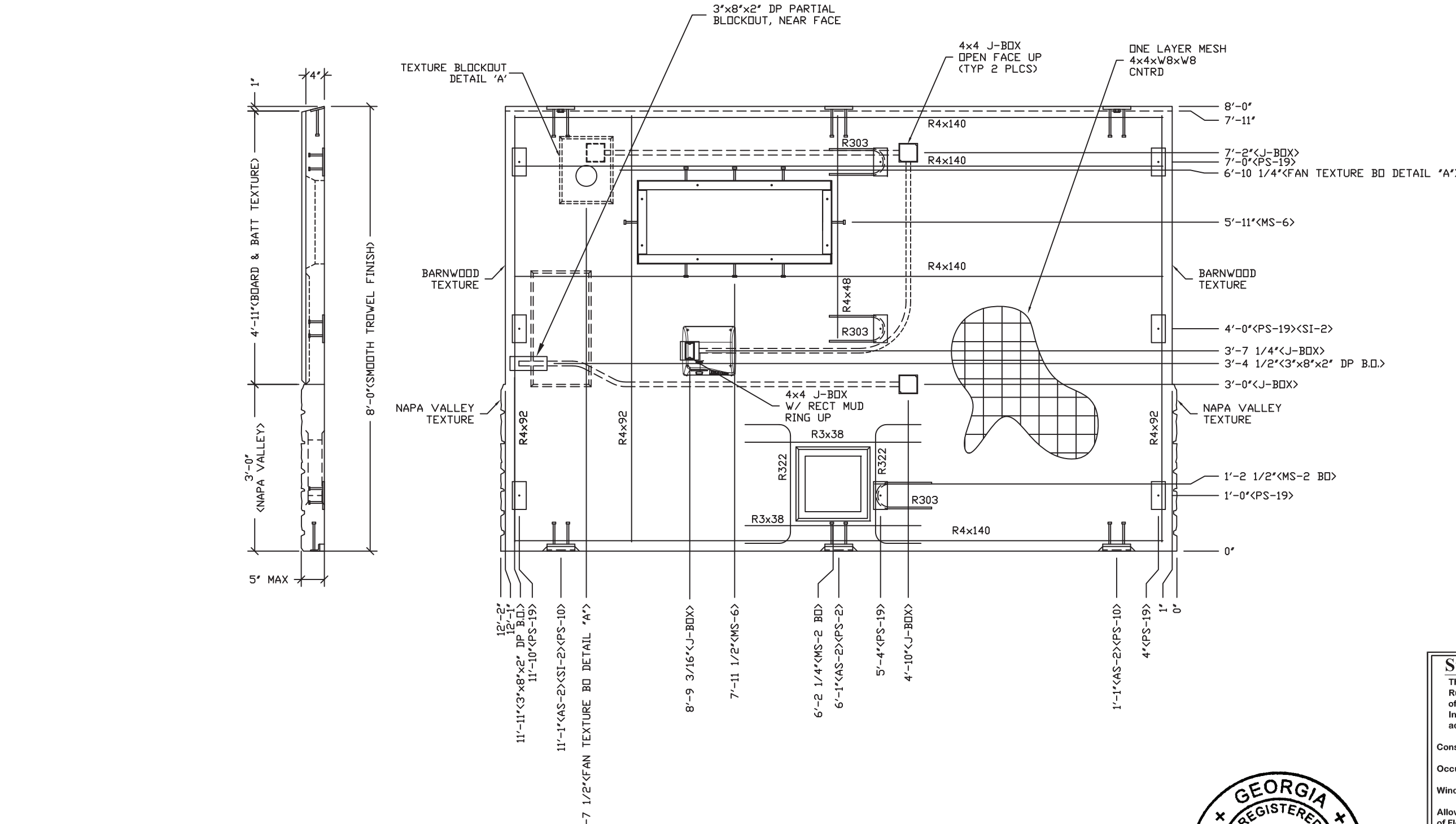
**State of Georgia**  
These prints comply with the Rules of the Commissioner of Community Affairs 110-2 Industrialized Buildings and adhere to the following:

Const. Type: **V-B**  
Occupancy: **B**  
Wind Velocity: **150/C** MPH  
Allowable # of Floors: **1**  
Allowable Floor Load: **400** PSF  
Seismic Design Category: **C**  
Fire Rating of Exterior Walls: **1** HRS  
Plan #: **2019-4264**  
Apprv. By: **Ian Henderson**  
Apprv. Date: **05/20/2019**  
GA. DCA Approved Third Party  
*Progressive Engineering Inc.*  
58640 State Road 15 Goshen, IN 46528 Ph: (574) 533-0337

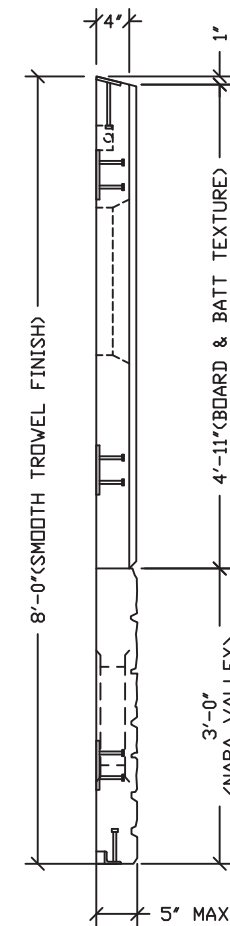
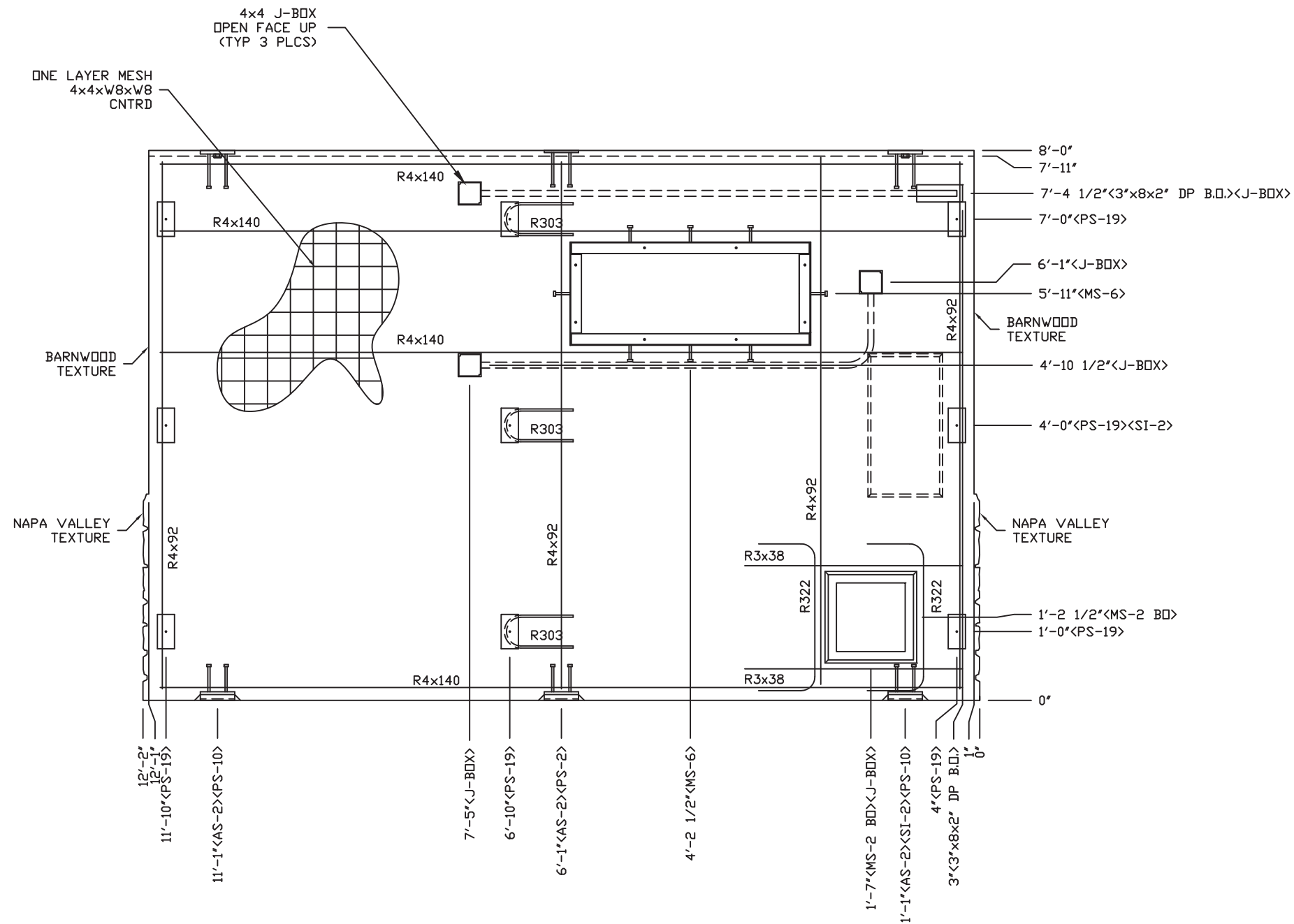


**NOTES:**

1. WALL THICKNESS = 4"+TEXTURE
2. ONE LAYER 4x4xw8xw8 MESH, CNTRD
3. R4x48 & R4x92 TO BE PLACED IN PAIRS, ONE EACH FACE W/ 3/4" COVER
4. ALL OTHER BARS TO BE CENTERED IN PANEL.



WALL PANEL MARK W4	
DWG NO. <b>OZ 1-11</b>	SHEET <b>11</b> REV. <b>20</b>



**NOTES:**

1. WALL THICKNESS = 4"+TEXTURE
2. ONE LAYER 4x4xW8xW8 MESH, CNTRD
3. R4x92 TO BE PLACED IN PAIRS, ONE EACH FACE W/ 3/4" COVER
4. ALL OTHER BARS TO BE CENTERED IN PANEL.

**State of Georgia**  
 These prints comply with the Rules of the Commissioner of Community Affairs 110-2 Industrialized Buildings and adhere to the following:

Const. Type: V-B  
 Occupancy: B  
 Wind Velocity: 150/C MPH  
 Allowable # of Floors: 1  
 Allowable Floor Load: 400 PSF  
 Seismic Design Category: C  
 Fire Rating of Exterior Walls: 1 HRS  
 Plan #: 2019-4264  
 Apprv. By: Ian Henderson  
 Apprv. Date: 05/20/2019  
 GA. DCA Approved Third Party  
*Progressive Engineering Inc.*  
 58640 State Road 15 Goshen, IN 46528 Ph: (574) 533-0337

EMBEDDED MATERIALS	
ITEM	QTY
PS-19	9
PS-2	1
PS-10	2
R4x140	4
R4x92	8
AS-2	3
R303	3
MS-6	1
R322	2
R3x38	2
MS-2 BO	1
SI-2 MOLD	1
3"x8x2" DP B.O.	1
4x4 J-BOX	3

CU. FT. CONC. 33.8 (1.25)	SQ. FT. W.W.F. 95
APPROXIMATE WEIGHT 5,070	

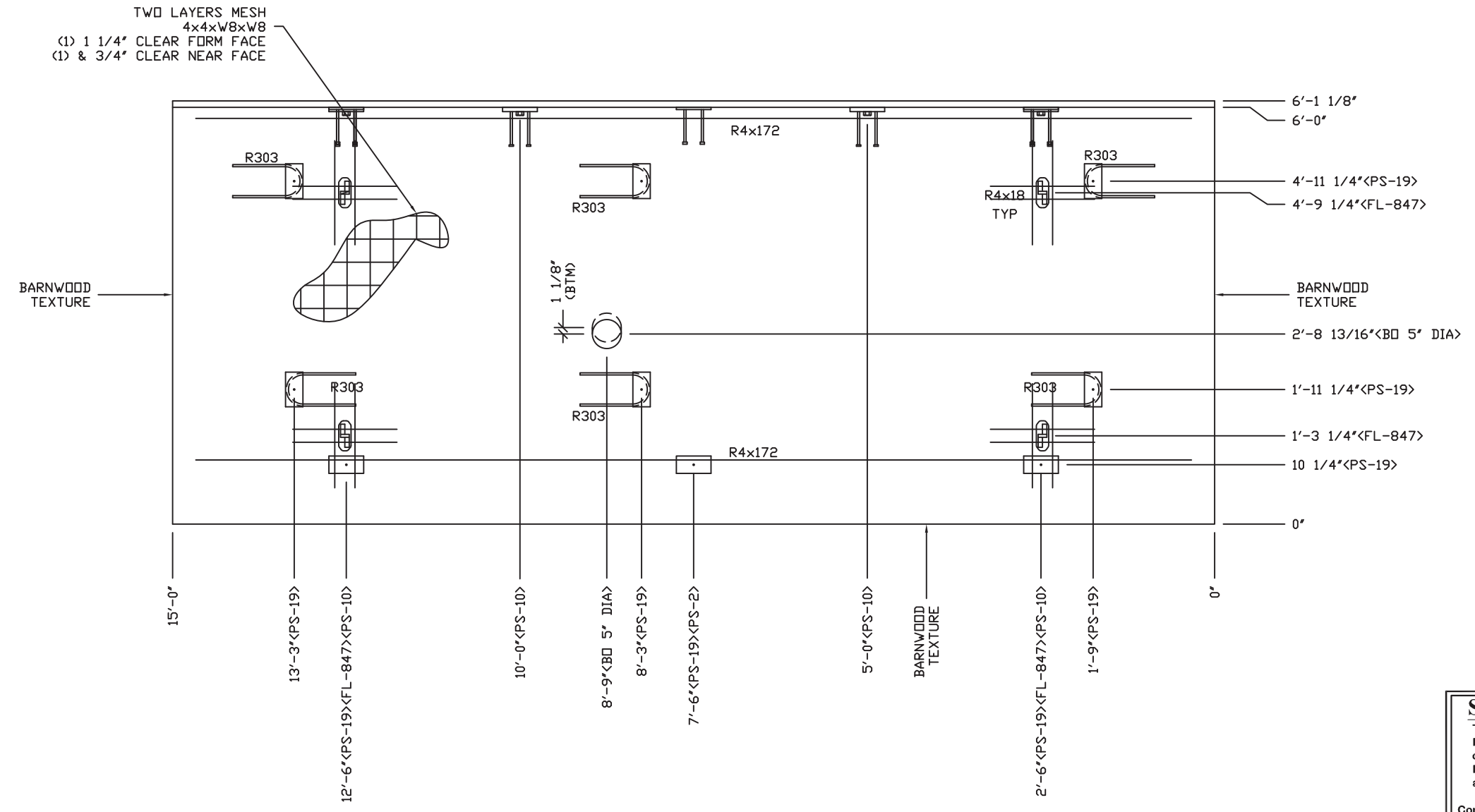
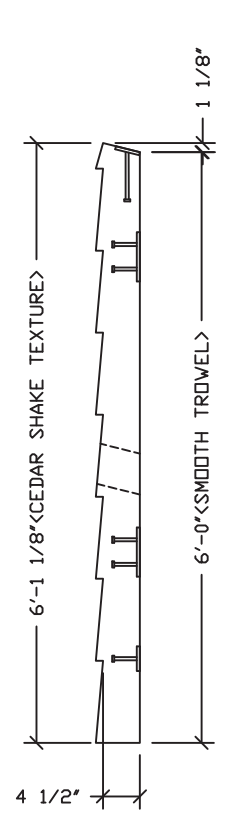


PROJECT TITLE  
**OZARK 1**  
 BUILDING NUMBER OZ1-232

NOTICE  
 The information contained herein is proprietary and the exclusive property of CXT Incorporated. The information may only be used by the original recipient for the purpose intended. Reproduction or distribution of this information is strictly prohibited without the prior written consent of CXT Incorporated. By allowing use of this information, CXT Incorporated grants no warranty, express or implied, including a warranty of merchantability or of fitness for a particular purpose.

REV.	DESCRIPTION	DATE	APPROVAL	DATE
SCALE	1/2"=1'-0"	DATE	05-07-19	
DRAWN	DANA B	FILE NO.	OZ1-232	
CHECKED	RDW	PLOT	24	

WALL PANEL MARK W5		
DWG NO. OZ 1-12	SHEET 12	REV. 20



May 18, 2019

NOTES:

1. ROOF THICKNESS = 4 1/2' MIN + TEXTURE
2. TWO LAYERS 4x4xW8xW8 MESH.
3. REINFORCING BARS R4x172 TO BE PLACED IN PAIRS, ONE AT EACH FACE WITH 1 1/4" COVER @ FORM FACE & 3/4" COVER @ NEAR FACE
4. R4x18 BARS TO BE PLACED W/ 1" COVER NEAR FACE.
5. ALL OTHER BARS TO BE CENTERED IN PANEL.

**State of Georgia**  
 These prints comply with the Rules of the Commissioner of Community Affairs 110-2 Industrialized Buildings and adhere to the following:

Const. Type: V-B  
 Occupancy: B  
 Wind Velocity: 150/C MPH  
 Allowable # of Floors: 1  
 Allowable Floor Load: 400 PSF  
 Seismic Design Category: C  
 Fire Rating of Exterior Walls: 1 HRS  
 Plan #: 2019-4264  
 Apprv. By: Ian Henderson  
 Apprv. Date: 05/20/2019  
 GA. DCA Approved Third Party  
*Progressive Engineering Inc.*  
 58640 State Road 15 Goshen, IN 46528 Ph: (574) 533-0337

EMBEDDED MATERIALS	
ITEM	QTY
PS-19	9
PS-2	1
PS-10	4
R4x172	4
R303	6
R4x18	16
FL-847	4
BLOCKOUT 5" DIA	1

CU. FT. CONC. 37.3 (1.38)	SQ. FT. W.W.F. 182
APPROXIMATE WEIGHT 5,595	

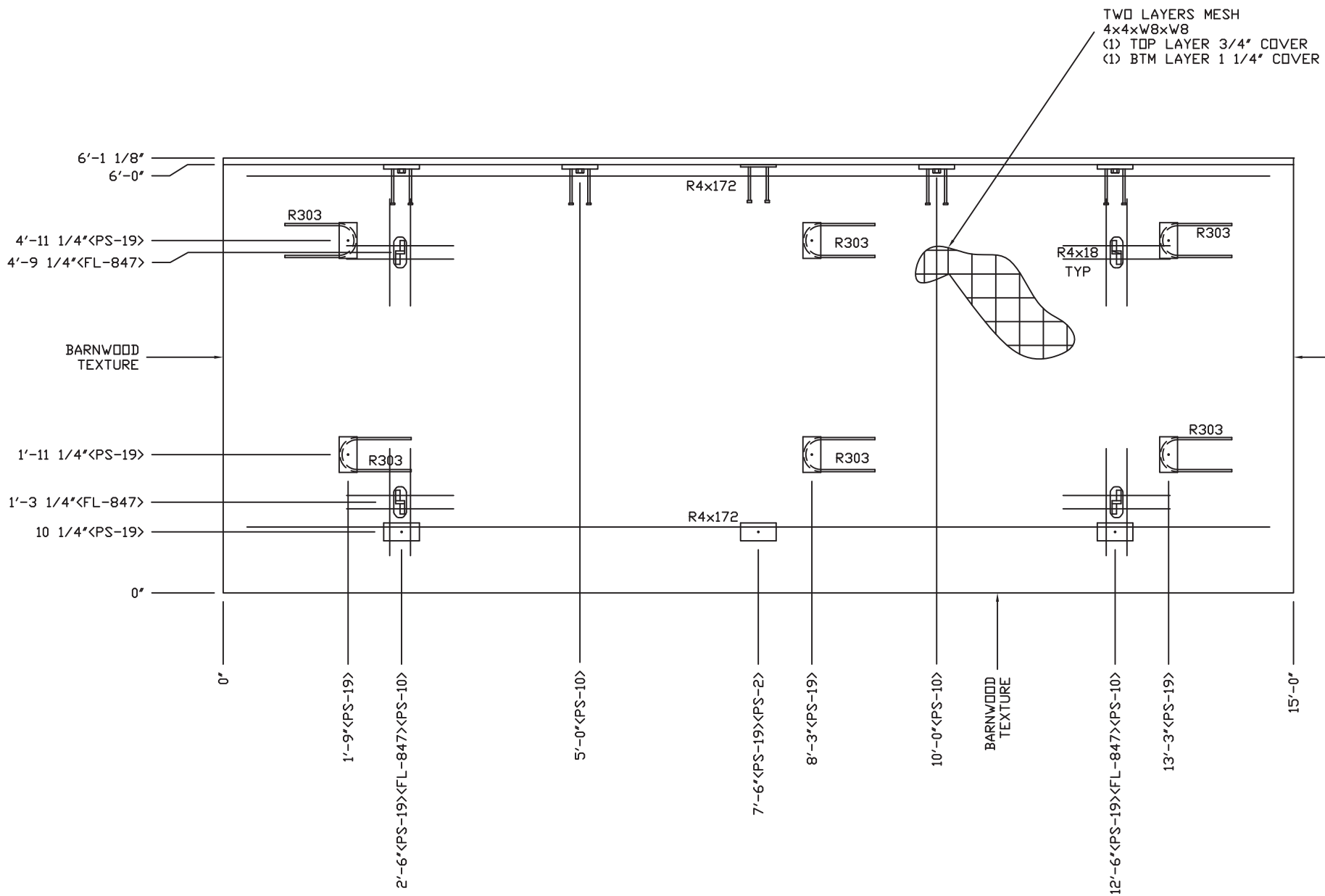
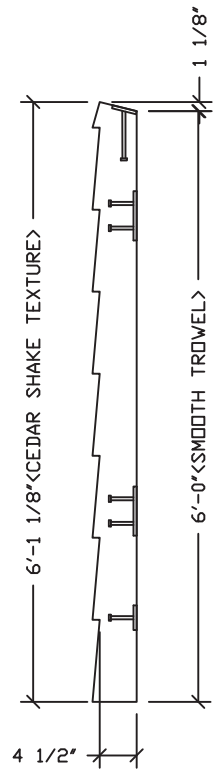
901 N. Highway 77 Hillsboro, TX 76645

PROJECT TITLE  
**OZARK 1**  
 BUILDING NUMBER OZ1-232

NOTICE  
 The information contained herein is proprietary and the exclusive property of CXT Incorporated. The information may only be used by the original recipient for the purpose intended. Reproduction or distribution of this information is strictly prohibited without the prior written consent of CXT Incorporated. By allowing use of this information, CXT Incorporated grants no warranty, express or implied, including a warranty of merchantability or of fitness for a particular purpose.

REV.	DESCRIPTION	APPROVAL	DATE
SCALE	1/2"=1'-0"	DATE	05-07-19
DRAWN	DANA B	FILE NO.	OZ1-232
CHECKED	RDW	PLOT	24

ROOF SLAB MARK R1		
DWG NO. OZ 1-13	SHEET 13	REV. 20



- NOTES:**
1. ROOF THICKNESS = 4 1/2' MIN + TEXTURE
  2. TWO LAYERS 4x4xW8xW8 MESH.
  3. REINFORCING BARS R4x68 & R4x172 TO BE PLACED IN PAIRS. ONE AT EACH FACE WITH 1 1/4" COVER @ FORM FACE & 3/4" COVER @ NEAR FACE
  4. R4x18 BARS TO BE PLACED W/ 1" COVER NEAR FACE.
  5. ALL OTHER BARS TO BE CENTERED IN PANEL.

**State of Georgia**  
 These prints comply with the Rules of the Commissioner of Community Affairs 110-2 Industrialized Buildings and adhere to the following:

Const. Type: V-B  
 Occupancy: B  
 Wind Velocity: 150/C MPH  
 Allowable # of Floors: 1  
 Allowable Floor Load: 400 PSF  
 Seismic Design Category: C  
 Fire Rating of Exterior Walls: 1 HRS  
 Plan #: 2019-4264  
 Apprv. By: Ian Henderson  
 Apprv. Date: 05/20/2019  
 GA. DCA Approved Third Party  
*Progressive Engineering Inc.*  
 58640 State Road 15 Goshen, IN 46528 Ph: (574) 533-0337

EMBEDDED MATERIALS	
ITEM	QTY
PS-19	9
PS-2	1
PS-10	4
R4x172	4
R303	6
R4x18	16
FL-847	4

CU. FT. CONC. 37.3 (1.38)	SQ. FT. W.W.F. 182
APPROXIMATE WEIGHT 5,595	

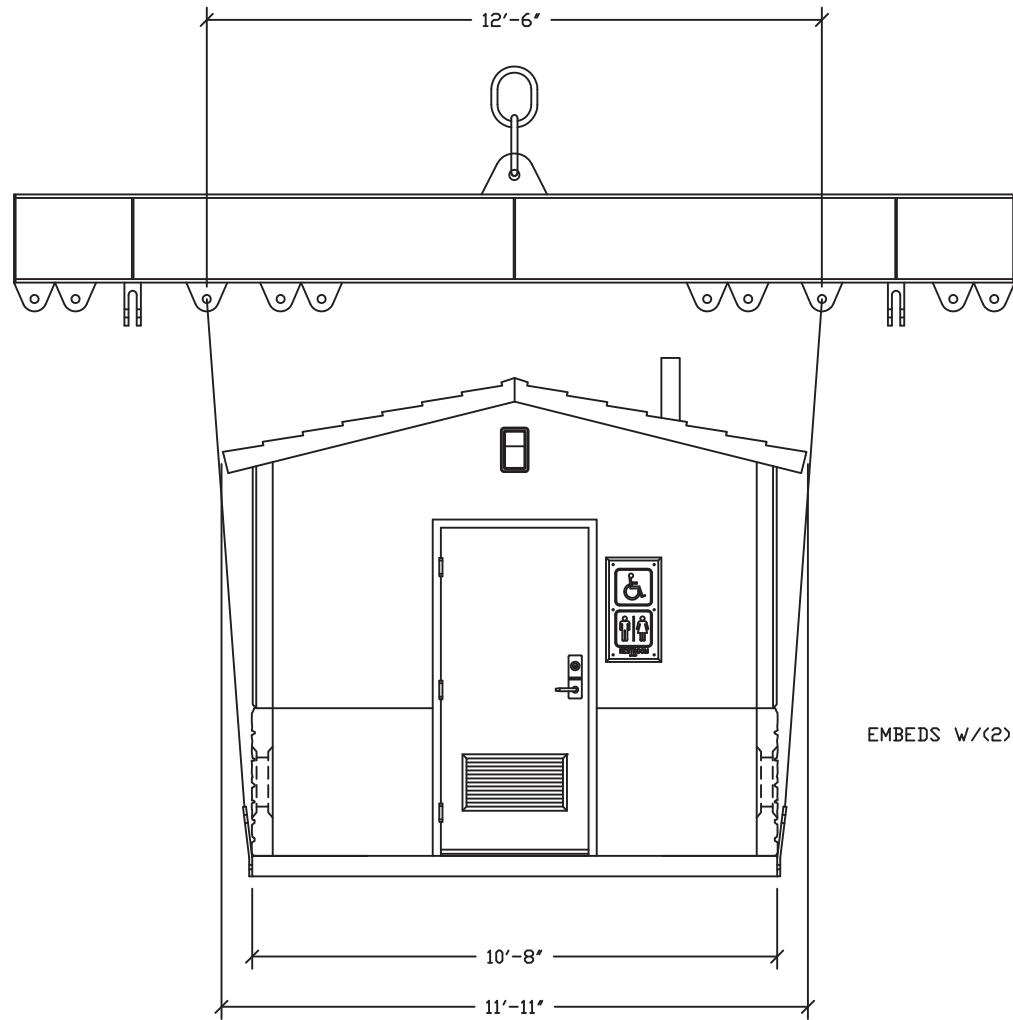
901 N. Highway 77 Hillsboro, TX 76645

PROJECT TITLE  
**OZARK 1**  
 BUILDING NUMBER OZ1-232

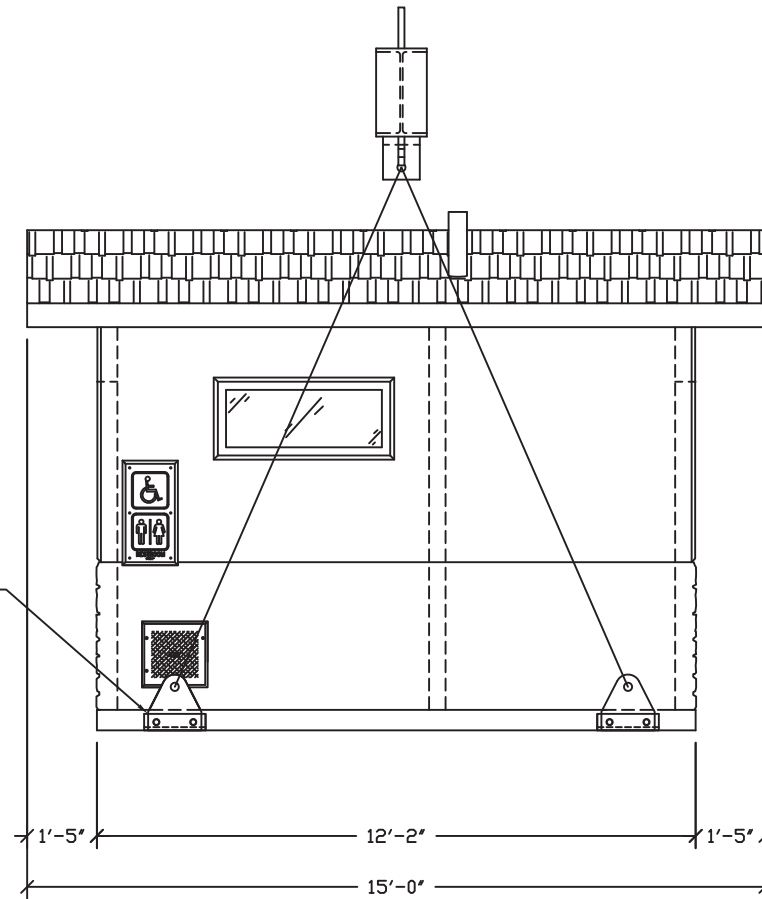
NOTICE  
 The information contained herein is proprietary and the exclusive property of CXT Incorporated. The information may only be used by the original recipient for the purpose intended. Reproduction or distribution of this information is strictly prohibited without the prior written consent of CXT Incorporated. By allowing use of this information, CXT Incorporated grants no warranty, express or implied, including a warranty of merchantability or of fitness for a particular purpose.

REV.	DESCRIPTION	DATE	APPROVAL	DATE
SCALE	1/2"=1'-0"	DATE		05-07-19
DRAWN	DANA B	FILE NO.	OZ1-232	
CHECKED	RDW	PLOT	24	

ROOF SLAB MARK R2		
DWG NO. OZ 1-14	SHEET 14	REV. 20



PS-22 LIFTING EYE ATTACH TO AS-3  
EMBEDS W/ (2) 1 1/2" DIA. HIGH TENSILE COIL BOLTS  
(SHEAR CAPACITY = 18,000# BOLT)



*W. Henderson*

**GEORGIA REGISTERED PROFESSIONAL ENGINEER**  
No. 028067  
**WILLIAM RICHARD HEIDEN, III**  
May 18, 2019

**State of Georgia**  
These prints comply with the Rules of the Commissioner of Community Affairs 110-2 Industrialized Buildings and adhere to the following:

Const. Type: V-B  
Occupancy: B  
Wind Velocity: 150/C MPH  
Allowable # of Floors: 1  
Allowable Floor Load: 400 PSF  
Seismic Design Category: C  
Fire Rating of Exterior Walls: 1 HRS  
Plan #: 2019-4264  
Apprv. By: Ian Henderson  
Apprv. Date: 05/20/2019  
GA. DCA Approved Third Party  
*Progressive Engineering Inc.*  
58640 State Road 15 Goshen, IN 46528 Ph: (574) 533-0337

**CXT Precast Products**  
901 N. Highway 77 Hillsboro, TX 76645

PROJECT TITLE  
**OZARK 1**  
BUILDING NUMBER OZ1-232

NOTICE  
The information contained herein is proprietary and the exclusive property of CXT Incorporated. The information may only be used by the original recipient for the purpose intended. Reproduction or distribution of this information is strictly prohibited without the prior written consent of CXT Incorporated. By allowing use of this information, CXT Incorporated grants no warranty, express or implied, including a warranty of merchantability or of fitness for a particular purpose.

CXT Incorporated

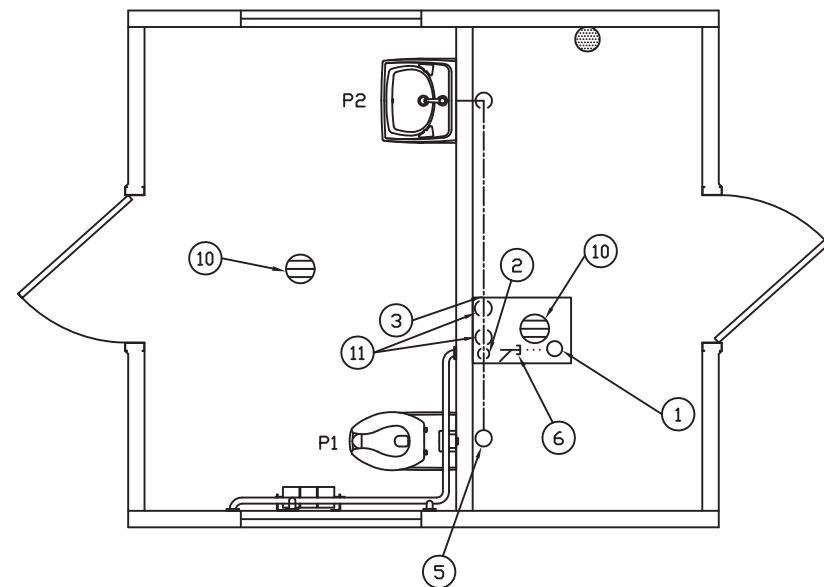
REV.	DESCRIPTION	APPROVAL	DATE
SCALE	1/4"=1'-0"	DATE	05-07-19
DRAWN	DANA B	FILE NO.	OZ1-232
CHECKED	RDW	PLOT	48

**RIGGING DETAILS**

DWG NO.	SHEET	REV.
OZ 1-15	15	
	20	

SHIPPING WEIGHTS AND DIMENSIONS OZ1-232

SECTION	WEIGHT	LENGTH	WIDTH	HEIGHT
A	40,400	15'-0"	11'-11"	10'-2"



PLUMBING FLOOR PLAN

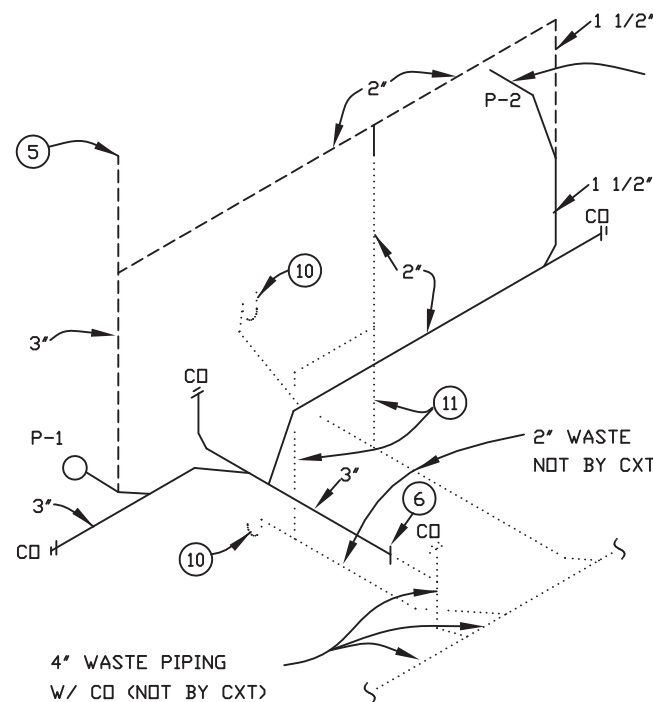
1/4" = 1'-0"

PIPING LEGEND

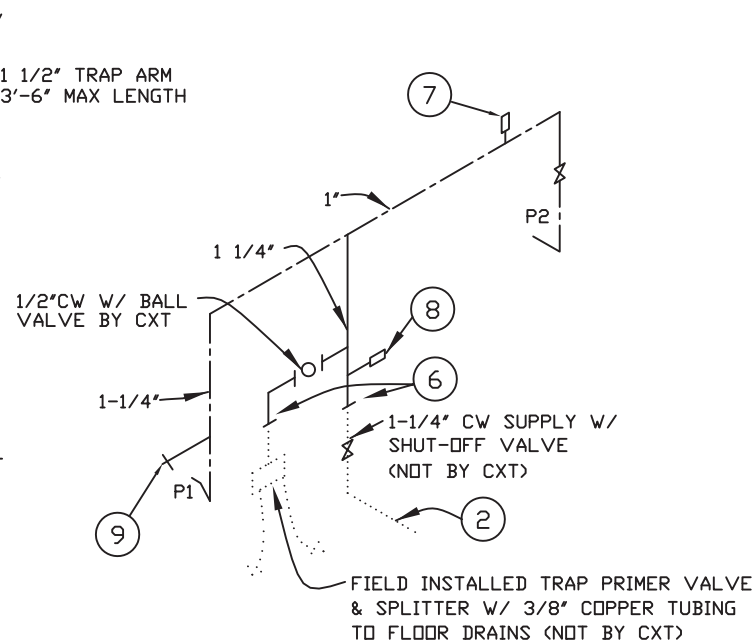
- HDT WATER
- COLD WATER
- VENT
- WASTE
- FIELD INSTALLED (NOT BY CXT)
- SHUT-OFF VALVE

WASTE PIPE:  
PVC ASTM D2661, SCHED. 40

PROVIDE BACKFLOW PREVENTER ONLY IF SPECIFICALLY REQUIRED BY LOCAL JURISDICTION



WASTE & VENT RISER DIAGRAM



WATER PIPING DIAGRAM

WATER PIPE - KEY NOTES

1. 4" WASTE THRU FLOOR, NOT BY CXT. SEE WASTE & VENT DIAGRAM
2. 1-1/4" COLD WATER THRU FLOOR, NOT BY CXT.
3. VENT, CW, & WASTE ALONG WALL SEE WASTE & VENT AND WATER DIAGRAMS.
4. NOT USED.
5. 3" VENT THROUGH ROOF
6. TO THIS POINT BY CXT.
7. ASSE 1010 WATER HAMMER ARRESTOR SIOUX CHIEF HYDRA-RESTOR #654-C OR EQUAL
8. 1/2" AIR QUICK CONNECTION W/ BALL VALVE FOR BLOWING OUT WATER PIPING.
9. 3/4" HOSE BIBB W/ SCREW ON VACUUM BREAKER
10. FLOOR DRAIN, FIELD INSTALLED (NOT BY CXT)
11. 2" VENTS FOR FLOOR DRAIN

PLUMBING FIXTURE SCHEDULE

SYM	DESCRIPTION	MANUFACTURER	MODEL #	FLUSH VALVE/FAUCET	TRAP	ACTUATOR	DRAIN	HW	CW	WASTE	VENT	NOTES
P-1	WATER CLOSET	AMERICAN STANDARD	2634.101 (W.C.) 5905.100 (W.C. SEAT)	SLOAN ROYAL #952-1.6 L-3 W=4"	-	SLOAN HY33A	-	-	1-1/4"	3"	2"	1,3
P-2	LAVATORY	AMERICAN STANDARD	0356.421 (LAV.)	SYMMONS SLS-7000	OFFSET 1.5x17GA.CP		CHROME STRAINER	-	1/2"	1-1/2"	1-1/2"	2,4
P-5	FLOOR DRAIN	TRAVIS	RM54960 (RESTROOM - QTY 1)									5
		SIOUX CHIEF	840-2A (CHASE - QTY 1)									

**State of Georgia**  
These prints comply with the Rules of the Commissioner of Community Affairs 110-2 Industrialized Buildings and adhere to the following:

Const. Type: **V-B**

Occupancy: **B**

Wind Velocity: **150/C** MPH

Allowable # of Floors: **1**

Allowable Floor Load: **400** PSF

Seismic Design Category: **C**

Fire Rating of Exterior Walls: **1** HRS

Plan #: **2019-4264**

Apprv. By: **Ian Henderson**

Apprv. Date: **05/20/2019**

GA. DCA Approved Third Party  
**Progressive Engineering Inc.**  
58640 State Road 15 Goshen, IN 46528 Ph: (574) 533-0337



May 18, 2019



901 N. Highway 77 Hillsboro, TX 76645

PROJECT TITLE  
**OZARK 1**  
BUILDING NUMBER OZ1-232

NOTICE: The information contained herein is proprietary and the exclusive property of CXT Incorporated. The information may only be used by the original recipient for the purpose intended. Reproduction or distribution of this information is strictly prohibited without the prior written consent of CXT Incorporated. By allowing use of this information, CXT Incorporated grants no warranty, express or implied, including a warranty of merchantability or of fitness for a particular purpose. CXT Incorporated

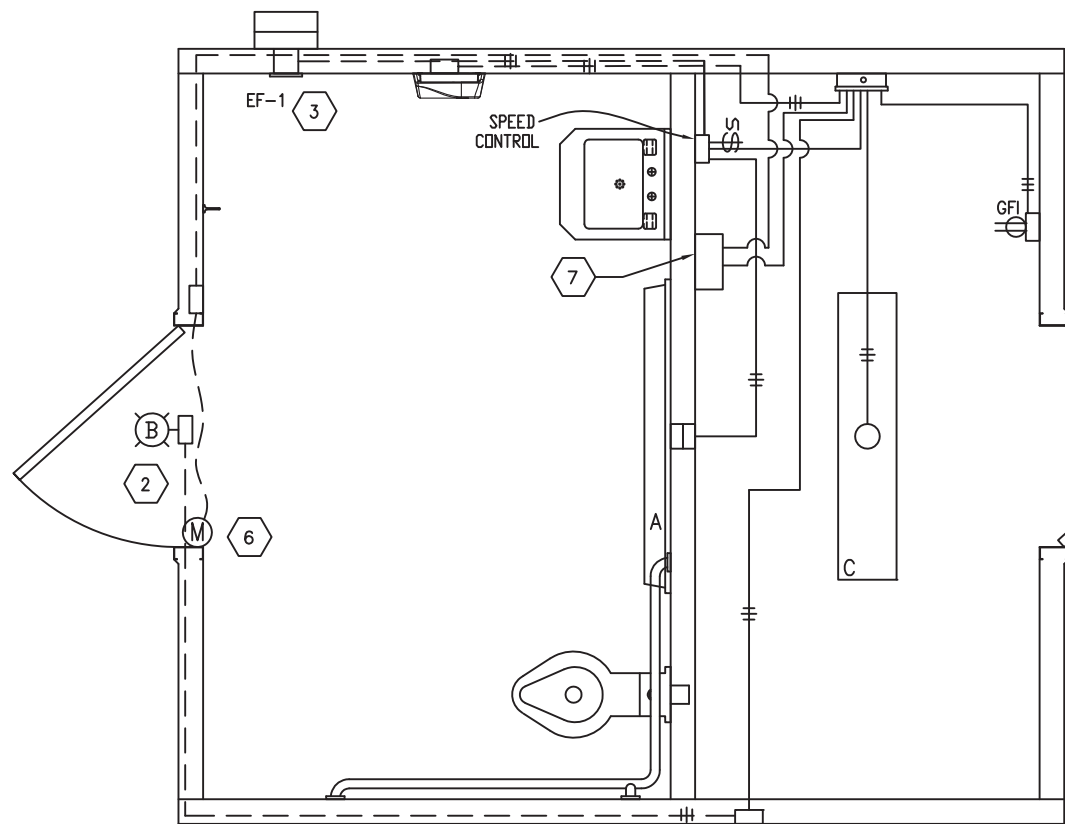
REV.	DESCRIPTION	APPROVAL	DATE
SCALE	1/4"=1'-0"	DATE	05-07-19
DRAWN	DANA B	FILE NO.	OZ1-232
CHECKED	RDW	PLOT	48

**PLUMBING PLAN, DIAGRAMS & SCHEDULES**

DWG NO. **OZ 1-16** SHEET **16** REV. **20**

- NOTES:
1. OFFSET FLUSH VALVE TAILPIECE PER ADA, RIGHT OR LEFT HAND, AS REQUIRED. PROVIDE FLUSH VALVE FOR 4" WALL THICKNESS.
  2. HAMMER ARRESTOR JRS520-T-C, FLOOR DRAIN S2005A025NBLP, TRAP PRIMER - MIFAB MM5500, DISTR UNIT - MIFAB
  3. MOUNT RIM AT 17" ABOVE FLOOR.
  4. 1/2X15 COMP ANG LAV BSCR1915AC,
  5. TRAP PRIMER- MIFAB MM500, DISTR UNIT- MIFAB





**State of Georgia**  
 These prints comply with the Rules of the Commissioner of Community Affairs 110-2 Industrialized Buildings and adhere to the following:

Const. Type: V-B  
 Occupancy: B  
 Wind Velocity: 150/C MPH  
 Allowable # of Floors: 1  
 Allowable Floor Load: 400 PSF  
 Seismic Design Category: C  
 Fire Rating of Exterior Walls: 1 HRS  
 Plan #: 2019-4264  
 Apprv. By: Ian Henderson  
 Apprv. Date: 05/20/2019  
 GA. DCA Approved Third Party  
*Progressive Engineering Inc.*  
 58640 State Road 15 Goshen, IN 46528 Ph: (574) 533-0337

**PANEL SCHEDULE**

AMP 100 PANEL 120/240V, 1P, 3W TOTAL CONNECTED VA LOAD 1,647  
 SURFACE MOUNT TOTAL CALCULATED VA LOAD 1,936

CIRCUIT		LOAD		PH	CIRCUIT		LOAD	
NO.	DESCRIPTION	OCF	TYPE (VA) (A)		NO.	DESCRIPTION	OCF	TYPE (VA) (A)
1	PHOTO CONTROLLED EXTERIOR LIGHT	1P/20A	C 14 0.2	A	2	CHASE RECEPTACLE	1P/20A	R 180 1.5
3	CHASE LIGHT	1P/20A	N 28 0.3	B	4	RESTROOM LIGHT & EXHAUST FAN	1P/20A	N 129 1.1
5	ELECTRIFIED DOOR LOCKS & TIME CLOCK	1P/20A	R 156 1.3	A	6	HAND DRYER	1P/20A	L 1,140 9.5
7				B	8			
9				A	10			
11				B	12			
13				A	14			
15				B	16			
17				A	18			
19				B	20			

LOAD	CONNECTED	CALCULATED
(C)ONTINUOUS	14 X 1.25	18 VA
(R)EC (1ST 10KVA)	336 X 1.00	336 VA
(N)ON-CONTINUOUS	157 X 1.00	157 VA
(L)ARGEST MOTOR	1,140 X 1.25	1,425 VA
<b>TOTAL LOAD</b>	<b>1,647 VA</b>	<b>1,936 VA</b>
		<b>8.1 AMPS</b>

NOTE: MAXIMUM ALLOWABLE AIC IS 22K AMPS, PANEL MODIFICATIONS WILL BE REQUIRED (NOT BY CXT) IF TRANSFORMER CAPACITY EXCEEDS 175 KVA.

**ELECTRICAL PLAN**

**KEY NOTES**

NTS

- MOTION CONTROLLED INTERIOR LIGHT. WIRE SECOND ISOLATED CONTACT IN SERIES WITH EXHAUST FAN SPEED SWITCH FOR FAN MOTOR CONTROL.
- EXTERIOR LIGHT TO BE CONTROLLED BY PHOTOCELL.
- CIRCUIT AS NEEDED FOR THE LOAD OF THE EXHAUST FAN. WIRE THRU SPEED SWITCH (IN CHASE) AND OCCUPANCY SENSOR ISOLATED CONTACT.
- PROVIDE CIRCUIT BREAKER LOCKOUTS FOR EACH HAND DRYER.
- NOT USED.
- TOWNSTEEL ELECTRIFIED MORTISE LOCK, SENTINEL LEVER, 626 FINISH WITH ADA THUMBTURN AND PRIVACY INDICATOR. POWER SUPPLY TO BE ROUTED INSIDE DOOR FRAME AND THROUGH MIDDLE HINGE PER MANUFACTURER RECOMMENDATIONS.
- TME-E-L-A7912P-SENTINEL-26D-ADA: 12V POWER SUPPLY, 24HR ELECTROMECHANICAL TIMER AND 12V BACK UP BATTERY.

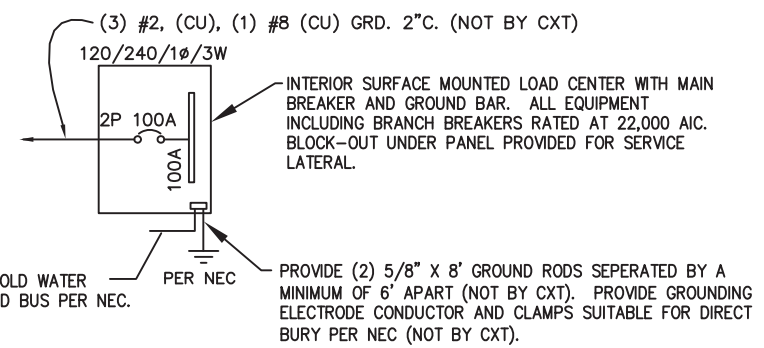
**GENERAL ELECTRICAL NOTES**

- RECESSED JUNCTION BOXES FOR SINGLE DEVICES SHALL HAVE SINGLE GANG MUD RINGS CAST IN CONCRETE WALLS.
- ALL RECEPTACLES SHALL BE GFCI PROTECTED BY CIRCUIT BREAKERS OR BY OTHER GFCI RECEPTACLES.
- ALL CONDUIT SHALL BE 1/2" MINIMUM, EXPOSED CONDUIT SHALL BE EMT, RECESSED SHALL BE PVC.
- INSTALL ALL WIRING IN CONDUIT OR RELATED ENCLOSURES.
- ALL ELECTRICAL INSTALLATIONS SHALL MEET THE 2017 VERSION OF THE NATIONAL ELECTRICAL CODE.
- MINIMUM WIRE SIZE SHALL BE #12 AWG COPPER, THHN INSULATION UNLESS NOTED OTHERWISE.
- ROUTE ALL CONDUITS IN UTILITY ROOM AT CEILING OR FACE OF WALLS.
- PROVIDE SPEED SWITCH FOR FAN CONTROL LOCATED IN CHASE.
- ELECTRICAL DRAWINGS ARE DIAGRAMMATIC IN NATURE AND MAY NOT SHOW EXACT LOCATIONS OF DEVICES, REFER TO WALL PANEL AND OTHER DRAWINGS FOR EXACT LOCATIONS OF J-BOXES, ETC.

WIRE SIZE	1/2" EMT	3/4" EMT	1/2" ENT	3/4" ENT	1/2" FMC	3/4" FMC
#14 THHN	12	22	11	21	13	22
#12 THHN	9	16	8	15	9	16
#10 THHN	5	10	5	9	6	10

**SYMBOLS LEGEND**

- |     |   |       |   |
|-----|---|-------|---|
| (X) | NOTE REFERENCE  | ( )   | LOAD CENTER "A"                             |
| ( ) | COMBINATION SWITCH AND DUPLEX RECEPTACLE  | ( ) X | WALL MOUNTED FLUORESCENT FIXTURE            |
| ( ) | DUPLEX RECEPTACLE ( x = BREAKER # IF SHOWN)   | ( ) X | CEILING MOUNTED FLUORESCENT FIXTURE         |
| ( ) | GFI DUPLEX RECEPTACLE ( x = BREAKER # IF SHOWN)   | (X)   | HAND DRYER WITH                             |
| ( ) | ON / OFF SWITCH   | ( )   | HAND DRYER WITH DISCONNECT SWITCH           |
| ( ) | SPEED SWITCH  | (WH)  | WATER HEATER                                |
| ( ) | JUNCTION BOX  | (OS)  | OCCUPANCY SENSOR WITH RECESSED JUNCTION BOX |
| ( ) | RECESSED JUNCTION BOX   | ( )   | SAFETY DISCONNECT                           |
| ( ) | SURFACE MOUNTED CONDUIT, CROSSHATCH OR SLASH AND NUMBER DENOTES WIRES, (ALL #12AWG UNO, UNLESS NOTED) ONE WIRE TO BE GROUND | (X)   | PANEL OR DEVICE AS NOTED                    |
| ( ) | CONCEALED CONDUIT   | (T)   | THERMOSTAT                                  |
|     |   | ( )   | HEATER                                      |



**ONE-LINE POWER DIAGRAM**

NTS

**LIGHTING FIXTURE SCHEDULE**

FIXTURE NUMBER	VOLTAGE	WATTS	DESCRIPTION
A	120	28	LUMINAIRE VPF84 INTERIOR LIGHT FIXTURE, VPF8-4-28W HP-4000K-120-CP-WHT-WET-DCC-TX/SD SURFACE MOUNTED, LED LAMP 4 FT, WRAP AROUND LENS, LOW TEMPERATURE DRIVER, BUILT IN OCCUPANCY SENSOR ACTIVATED W/ ADDITIONAL OCCUPANCY SENSOR FOR FAN CONTROL
B	120	14	SWOOP 610 LED EXTERIOR LIGHT, YWP610-14W HP-3500K-120-CP-BRZ-CAB/PC EXTERIOR, VANDAL RESISTANT, WALL MOUNTED, 14 WATT, CLEAR PRISMATIC LENS, BUILT IN PHOTOELECTRIC CONTROL
C	120	28	LUMINAIRE VPF84 INTERIOR LIGHT FIXTURE, VPF8-4-28W HP-4000K-120-CP-WHT-WET-DCC-TX/SD SURFACE MOUNTED, LED LAMP 4 FT, WRAP AROUND LENS, LOW TEMPERATURE DRIVER, BUILT IN OCCUPANCY SENSOR ACTIVATED

NOTE: THE SOURCE OF EFFICACY OF EXTERIOR LIGHTING IS TO BE A MINIMUM OF 45 LUMENS PER WATT.

**EXHAUST FAN SCHEDULE**

SYM	MFR	MODEL #	CFM	SONES	VOLTS	AMPS	NTS.
EF-1	FANTECH	RVF-4XL	193	6.0	120	0.84	1,2

- NOTE
- WITH SPEED CONTROL MOUNTED IN CHASE.
  - FANS LISTED FOR WET LOCATION, CONTROL VIA OCCUPANCY SENSOR. LOCATE OPEN FACE J-BOX ON EXTERIOR SIDE OF PANEL.



May 18, 2019



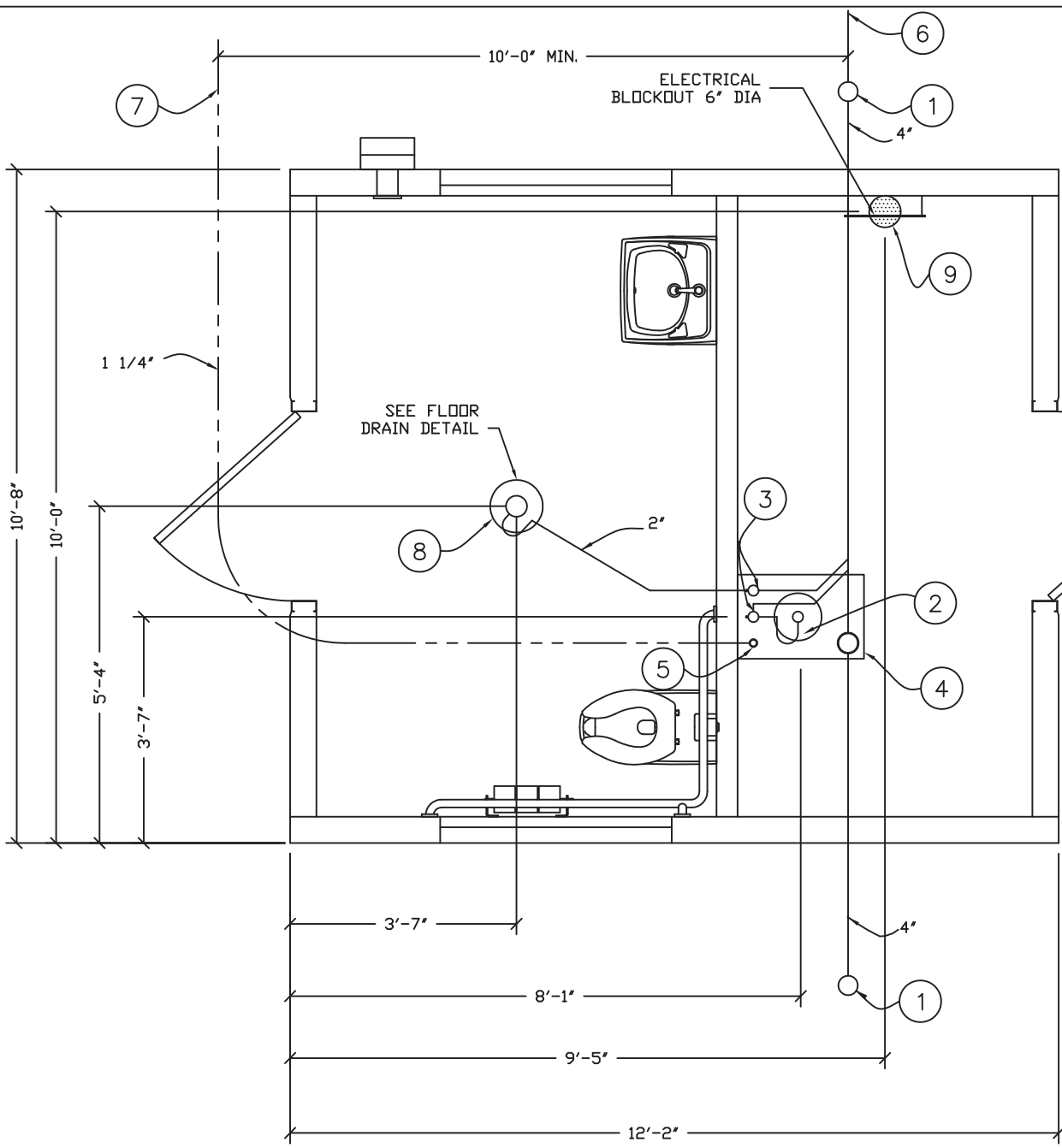
PROJECT TITLE  
**OZARK 1**  
 BUILDING NUMBER OZ1-232

NOTICE  
 The information contained herein is proprietary and the exclusive property of CXT Incorporated. The information may only be used by the original recipient for the purpose intended. Reproduction or distribution of this information is strictly prohibited without the prior written consent of CXT Incorporated. By allowing use of this information, CXT Incorporated grants no warranty, express or implied, including a warranty of merchantability or of fitness for a particular purpose.

REV.	DESCRIPTION	APPROVAL	DATE
SCALE	3/8"=1'-0"	DATE	05-07-19
DRAWN	DNA B	FILE NO.	OZ1-232
CHECKED	RDW	PLOT	32

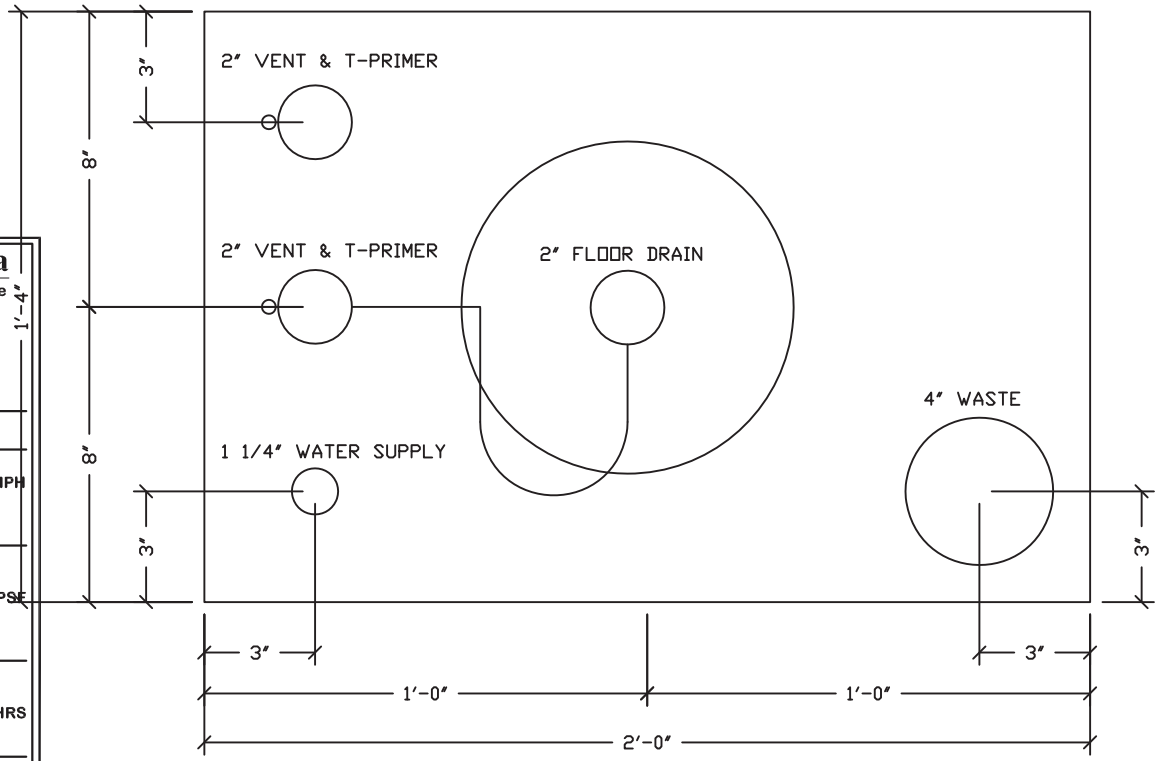
**ELECTRICAL PLAN, DETAILS & SCHEDULES**

DWG NO.	SHEET	REV.
OZ 1-17	17	20



**State of Georgia**  
 These prints comply with the Rules of the Commissioner of Community Affairs 110-2 Industrialized Buildings and adhere to the following:

Const. Type: V-B  
 Occupancy: B  
 Wind Velocity: 150/C MPH  
 Allowable # of Floors: 1  
 Allowable Floor Load: 400 PSF  
 Seismic Design Category: C  
 Fire Rating of Exterior Walls: 1 HRS  
 Plan #: 2019-4264  
 Apprv. By: Ian Henderson  
 Apprv. Date: 05/20/2019  
 GA. DCA Approved Third Party  
Progressive Engineering Inc.  
 58640 State Road 15 Goshen, IN 46528 Ph: (574) 533-0337



**PIPING LEGEND**

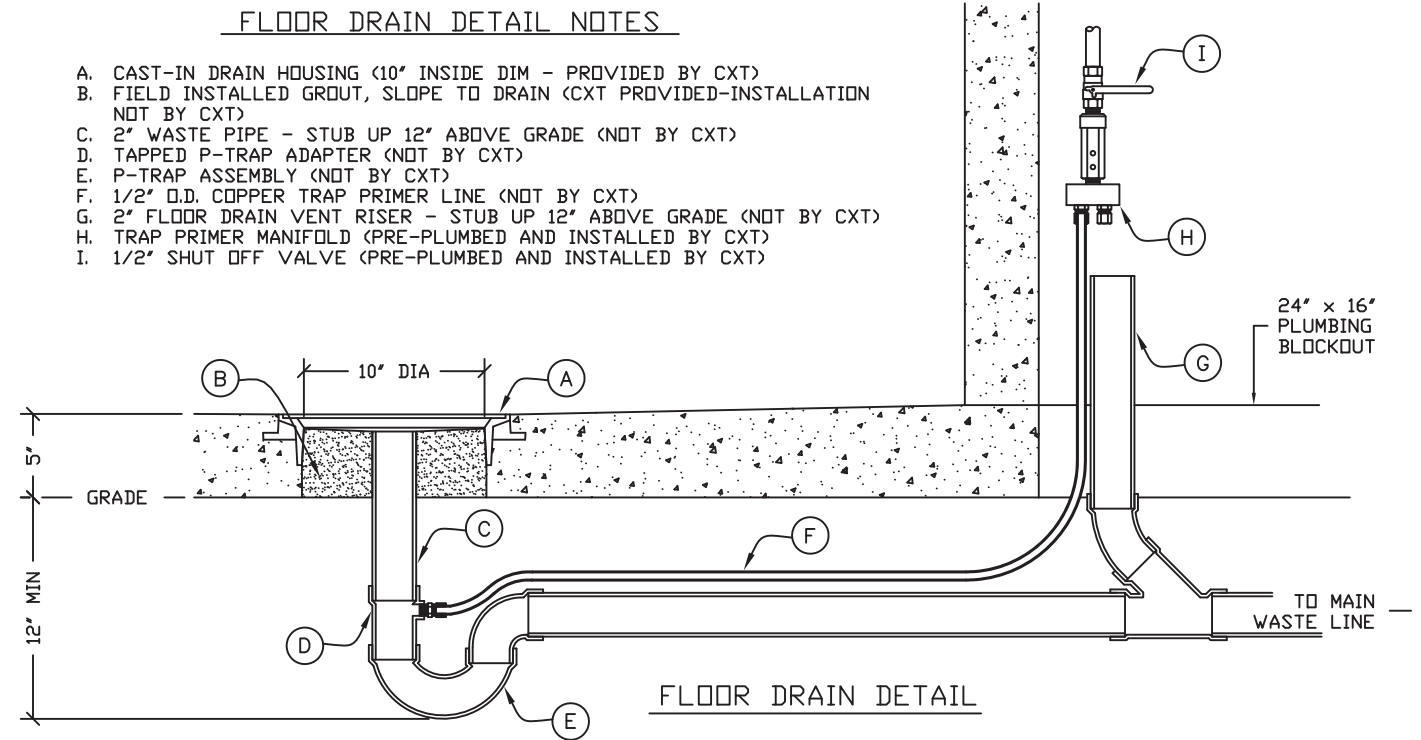
- 1-1/4" TYPE "K" ANNEALED "SOFT" COPPER WATER SERVICE
- BELOW FLOOR WASTE PIPING SCH 40 PVC TYPE DWV
- BELOW FLOOR VENT PIPING SCH 40 PVC TYPE DWV

**BELOW FLOOR PIPING - KEY NOTES**

1. 4" CLEAN OUT TO GRADE.
2. 2" FLOOR DRAIN. FIELD INSTALLED W/ TRAP PRIMER SYSTEM IF OPTION IS ACCEPTED, INSTALL AS SHOWN W/ VENT & WASTE PIPE. (24"x16" BLOCKOUT)
3. 2" VENT EXTENDED 12" ABOVE FINISHED FLOOR LEVEL, (1 FOR EA FLOOR DRAIN IF FLOOR DRAIN OPTION ACCEPTED) PROVIDE TEST PLUG. (24"x16" BLOCKOUT)
4. 4" WASTE PIPE EXTENDED 12" ABOVE FINISHED FLOOR LEVEL, PROVIDE TEST PLUG. (24"x16" BLOCKOUT)
5. 1 1/4" TYPE K ANNEALED "SOFT" COPPER WATER SERVICE EXTENDED 12" ABOVE FINISHED FLOOR LEVEL, PROVIDE TEST CAP AT END. (24"x16" BLOCKOUT)
6. 30" MIN. BURY, PROVIDE TRACER TAPE.
7. MIN. BURY PER LOCAL REQUIREMENTS TO PROTECT AGAINST FREEZING AND DAMAGE.
8. 2" FLOOR DRAIN. FIELD INSTALLED W/ TRAP PRIMER SYSTEM IF OPTION IS ACCEPTED, INSTALL AS SHOWN W/ VENT & WASTE PIPE. (10" DIA BLOCKOUT)
9. ELECTRICAL STUB UP, (6" DIA BLOCKOUT)

**FLOOR DRAIN DETAIL NOTES**

- A. CAST-IN DRAIN HOUSING (10" INSIDE DIM - PROVIDED BY CXT)
- B. FIELD INSTALLED GROUT, SLOPE TO DRAIN (CXT PROVIDED-INSTALLATION NOT BY CXT)
- C. 2" WASTE PIPE - STUB UP 12" ABOVE GRADE (NOT BY CXT)
- D. TAPPED P-TRAP ADAPTER (NOT BY CXT)
- E. P-TRAP ASSEMBLY (NOT BY CXT)
- F. 1/2" O.D. COPPER TRAP PRIMER LINE (NOT BY CXT)
- G. 2" FLOOR DRAIN VENT RISER - STUB UP 12" ABOVE GRADE (NOT BY CXT)
- H. TRAP PRIMER MANIFOLD (PRE-PLUMBED AND INSTALLED BY CXT)
- I. 1/2" SHUT OFF VALVE (PRE-PLUMBED AND INSTALLED BY CXT)



ALL PIPING INDICATED ON THIS SHEET IS NOT BY CXT



May 18, 2019



PROJECT TITLE  
**OZARK 1**  
 BUILDING NUMBER OZ1-232

NOTICE  
 The information contained herein is proprietary and the exclusive property of CXT Incorporated. The information may only be used by the original recipient for the purpose intended. Reproduction or distribution of this information is strictly prohibited without the prior written consent of CXT Incorporated. By allowing use of this information, CXT Incorporated grants no warranty, express or implied, including a warranty of merchantability or of fitness for a particular purpose.

REV.	DESCRIPTION	APPROVAL	DATE
SCALE	3/8"=1'-0"	DATE	05-07-19
DRAWN	DNA B	FILE NO.	OZ1-232
CHECKED	RDW	PLOT	32

**FLOOR DRAIN BLOCKOUTS & BELOW FLOOR PIPING**

DWG NO. <b>OZ 1-18</b>	SHEET <b>18</b>	REV. <b>20</b>
---------------------------	--------------------	-------------------

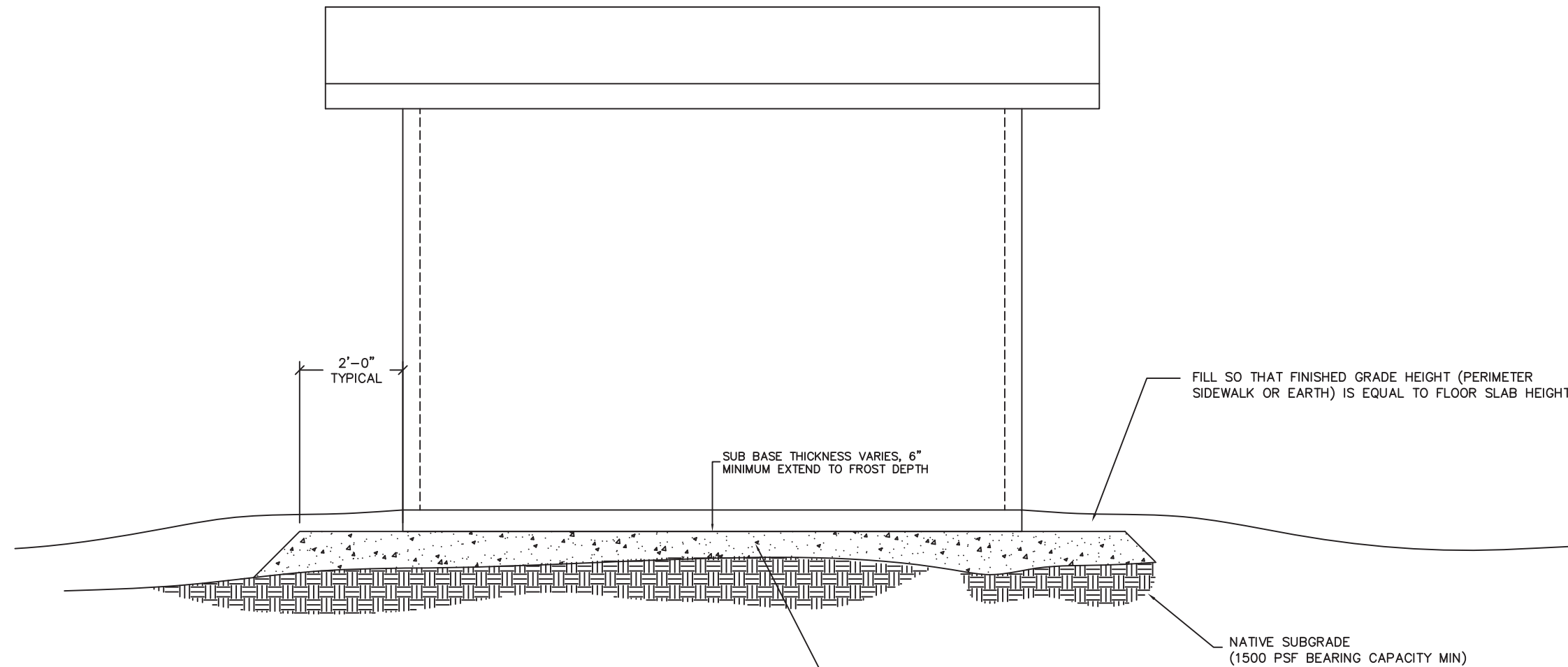
**NOTE:**

THIS FACTORY ASSEMBLED BUILDING, AS CONSTRUCTED, PROVIDES A RIGID BOX TYPE STRUCTURAL SYSTEM. VERTICAL LOADS ARE TRANSFERRED PRIMARILY THROUGH BEARING WALLS TO THE STRUCTURAL SLAB FLOOR OF THE BUILDING. THE VERTICAL LOADS ARE THEN DISTRIBUTED THROUGH THE REINFORCED CONCRETE FLOOR TO THE PREPARED GRANULAR, NON-FROST SUSCEPTIBLE (NFS) SUB-BASE WHICH DISTRIBUTES THE VERTICAL LOADS IN RELATIVELY UNIFORM FASHION TO THE NATIVE SUB-GRADE. AS WITH MOST CONSTRUCTION, THIS DOES REQUIRE THE NATIVE SUB-GRADE TO BE STRIPPED OF VEGETATION AND TOP SOIL PRIOR TO PLACEMENT OF THE PREPARED GRANULAR SUB-BASE. DUE TO THE INHERENT STIFFNESS OF THE BUILDING, IT WILL REMAIN SAFE AND STRUCTURALLY SOUND IN THE UNLIKELY EVENT OF FREEZING ACTION BELOW THE BUILDING REGARDLESS OF NATURAL FREEZE/ THAW CYCLES ANTICIPATED TO BE ENCOUNTERED IN THE STATE OF GEORGIA.

LATERAL LOADS ARE TRANSFERRED TO THE GROUND THROUGH FRICTIONAL RESISTANCE WITHOUT SLIDING OR SHIFTING BETWEEN THE BUILDING FLOOR SLAB AND THE PREPARED SOIL AND GRAVEL SUB-BASE ON WHICH THE BUILDING RESTS. SEISMIC ANALYSES ARE BASED ON LOADS DETERMINED IN ACCORDANCE WITH THE INTERNATIONAL BUILDING CODE USING PARAMETERS, WHICH MEET OR EXCEED THE CODE PRESCRIBED REQUIREMENTS FOR THIS INSTALLATION.

THIS BUILDING AS DESIGNED, RESTING ON A PROPERLY PREPARED GRANULAR SUB-BASE WILL BE SAFE AND STRUCTURALLY SOUND FOR VERTICAL AND LATERAL LOADS AS DISCUSSED ABOVE. A FULL DEPTH FOUNDATION WALL AT THE BUILDING PERIMETER AND AN ANCHORAGE SYSTEM, TYPICAL FOR OTHER TYPES OF BUILDING CONSTRUCTION, ARE NOT REQUIRED FOR THIS BUILDING.

THE "FOUNDATION" FOR THIS STRUCTURE IS ESSENTIALLY THE COMBINATION OF THE COMPACTED SUB-BASE MATERIAL AND THE BUILDING'S REINFORCED SLAB. THE COMBINATION OF THE COMPACTED SUB-BASE MATERIAL AND THE BUILDING'S REINFORCED SLAB NEED TO BE AT LEAST 12" THICK AND THE COMPACTED SUB-BASE MATERIAL SHALL EXTEND BELOW THE LOCAL FROST DEPTH



PRIOR TO PLACEMENT OF BUILDING A PROPERLY PREPARED SUB-BASE SHALL BE PROVIDED. SUB-BASE SHALL BE A MINIMUM OF 6" THICK AND CONSIST OF ¾" MINUS CRUSHED ROCK (ROAD BASE MATERIAL) COMPACTED TO 95% OF OPTIMUM DENSITY IN ACCORDANCE WITH ASTM D 1557. FINISHED SURFACE OF SUB-BASE SHALL BE FLAT AND LEVEL, WITH A MAXIMUM DEVIATION OF -¼"; +0" FROM A TRUE HORIZONTAL PLANE. REFER TO BUILDING HANDLING SHEET FOR SUB-BASE REQUIREMENTS DURING BUILDING PLACEMENT. (PREPARED SUB-BASE NOT BY CXT).



*W. R. Heiden, III*

May 18, 2019



901 N. Highway 77 Hillsboro, TX 76645

PROJECT TITLE  
**OZARK 1**  
BUILDING NUMBER OZ1-232

NOTICE  
The information contained herein is proprietary and the exclusive property of CXT Incorporated. The information may only be used by the original recipient for the purpose intended. Reproduction or distribution of this information is strictly prohibited without the prior written consent of CXT Incorporated. By allowing use of this information, CXT Incorporated grants no warranty, express or implied, including a warranty of merchantability or of fitness for a particular purpose.

CXT Incorporated

REV.	DESCRIPTION	DATE	APPROVAL	DATE
SCALE	3/8"=1'-0"	DATE		05-07-19
DRAWN	DANA B	FILE NO.	OZ1-232	
CHECKED	RDW	PLOT	32	

**FOUNDATION DETAIL**

DWG NO.	SHEET	REV.
OZ 1-19	19	20

**State of Georgia**  
These prints comply with the Rules of the Commissioner of Community Affairs 110-2 Industrialized Buildings and adhere to the following:

Const. Type: V-B

Occupancy: B

Wind Velocity: 150/C MPH

Allowable # of Floors: 1

Allowable Floor Load: 400 PSF

Seismic Design Category: C

Fire Rating of Exterior Walls: 1 HRS

Plan #: 2019-4264

Apprv. By: Ian Henderson

Apprv. Date: 05/20/2019

GA. DCA Approved Third Party  
*Progressive Engineering Inc.*  
58640 State Road 15 Goshen, IN 46528 Ph: (574) 533-0337

