

BOARD OF COMMISSIONERS

OSBORN NESBITT, SR., CHAIRMAN
Sherri L. Washington, Commissioner Post I
Dr. Doreen Williams, Commissioner Post II



DEPARTMENT OF FINANCE
MARK LEWIS, FINANCE DIRECTOR
TELEPHONE: 770-278-7555
FACSIMILE: 770- 278-8910

Addendum No. 1

**ITB No. 23-04
GA. HWY 138 SEWER MAIN EXTENSION**

April 28, 2023

ITB #23-04 is hereby amended as follows:

1. Below are questions received and corresponding answers:

A. Question: Does the County have a laydown yard near the project to store materials on during construction?

Answer: Yes, it will be located at a Rockdale County Property about 1 mile from Hightower Trail Elementary. The nearest County building address is 2420 Tatum Road, Conyers Ga. The laydown area is shown on the map included with this addendum. There is a gate at the entrance that typically opens just before 7:00 am and closes at 5:00 pm.

B. Question: Is there a budget available for this project?

Answer: \$1,500,000.00

C. Question: Will there be an adder for a Rock Bore added to the bid form?

Answer: Yes, please use the revised bid item form included with this addendum (see bid item#17). The measurement and payment description for the "Rock Jack and Bore Adder" (bid item #17) is as follows:

- 1. Payment for rock adder shall be made at the unit price bid per linear feet of steel casing installed in rock by jack and bore.**
- 2. Measurements will be made per linear foot of steel casing installed in rock.**
- 3. The unit price bid per linear foot shall include additional labor, materials, tools, equipment, and services to install steel casing in rock vs. soil.**
- 4. Authorization from Owner is required to use this item.**

BOARD OF COMMISSIONERS

OSBORN NESBITT, SR., CHAIRMAN
Sherri L. Washington, Commissioner Post I
Dr. Doreen Williams, Commissioner Post II



DEPARTMENT OF FINANCE
MARK LEWIS, FINANCE DIRECTOR
TELEPHONE: 770-278-7555
FACSIMILE: 770- 278-8910

2. All other conditions remain in full force and effect.

3. If a bid has been submitted and anything in this Addendum causes the bidder to change the item offered or to increase or decrease the bid price, the new price and/or changes will be inserted below:

4. All bidders under this Invitation to Bid are kindly requested to acknowledge receipt of this Addendum on page 9 of the Bid Package.

Tina Malone

Tina Malone, CPPB CPPO
Procurement Manager
Department of Finance, Purchasing Division

BID ITEM TABLE – ITB # 23-04

Instructions: Type or clearly print all prices.

Any modifications to items, quantities, or units will result in rejection of the bid.
Items marked with an asterisk (*) will only be used with Project Manager's authorization.

BID FORM

ROCKDALE COUNTY

GA HWY 138 SEWER MAIN EXTENSION

BID FOR UNIT PRICE WORK

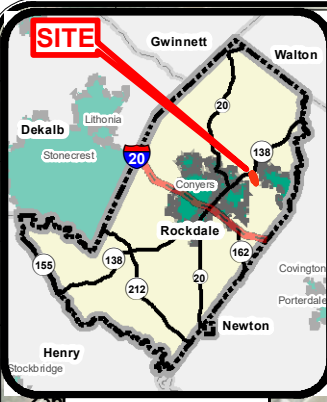
<u>BID ITEM NO.</u>	<u>UNIT PRICE BID ITEM DESCRIPTION</u>	<u>EST. QTY.</u>	<u>UNIT</u>	<u>UNIT PRICE</u>	<u>TOTAL AMOUNT</u>
1	8" P.V.C. SANITARY SEWER LINE(0'-6') CUT	471	LF	\$	\$
				figures	figures
2	8" P.V.C. SANITARY SEWER LINE(6'-8') CUT	2100	LF	\$	\$
				figures	figures
3	8" P.V.C. SANITARY SEWER LINE(8'-10') CUT	1207	LF	\$	\$
				figures	figures
4	8" P.V.C. SANITARY SEWER LINE(10'-12') CUT	627	LF	\$	\$
				figures	figures
5	8" P.V.C. SANITARY SEWER LINE(12'-14') CUT	374	LF	\$	\$
				figures	figures
6	8" P.V.C. SANITARY SEWER LINE(14'- 16') CUT	91	LF	\$	\$
				figures	figures
7	8" D.I.P. SANITARY SEWER LINE(0'-6') CUT	297	LF	\$	\$
				figures	figures

8	8" D.I.P. SANITARY SEWER LINE(6'-8') CUT	111	LF	\$	\$
				figures	figures
9	8" D.I.P. SANITARY SEWER LINE(8'-10') CUT	50	LF	\$	\$
				figures	figures
10	8" D.I.P. SANITARY SEWER LINE(10'-12') CUT	71	LF	\$	\$
				figures	figures
11	8" D.I.P. SANTARY SEWER LINE(12'-14') CUT	13	LF	\$	\$
				figures	figures
12	4' DIA STANDARD MANHOLE(0'- 6'DEPH)	19	EA	\$	\$
				figures	figures
13	4' DIAMETER EXTRA DEPTH MANHOLE (6'-12' DEPTH)	51	VF	\$	\$
				figures	figures
14	4' DIAMETER EXTRA DEPTH MANHOLE (12'-14' DEPTH)	4	VF	\$	\$
				figures	figures
15	CONNECT TO EXISTING MANHOLE & RECONSTRUCT INVERT	1	EA	\$	\$
				figures	figures
16	STEEL CASING 18" X 0.25" WALL THICKNESS, JACK & BORED W/CASING SPACERS& CARRIER PIPE INCLUDED	250	LF	\$	\$
				figures	figures
17	ROCK BORE ADDER FOR STEEL CASING 18" X 0.25" WALL THICKNESS, JACK & BORED	250	LF	\$	\$
				figures	figures
18	GRAVEL DRIVEWAY REMOVAL/REPLACEMENT	144	SF	\$	\$
				figures	figures
19	CONCRETE DRIVEWAY REMOVAL/REPLACEMENT	288	SF	\$	\$
				figures	figures

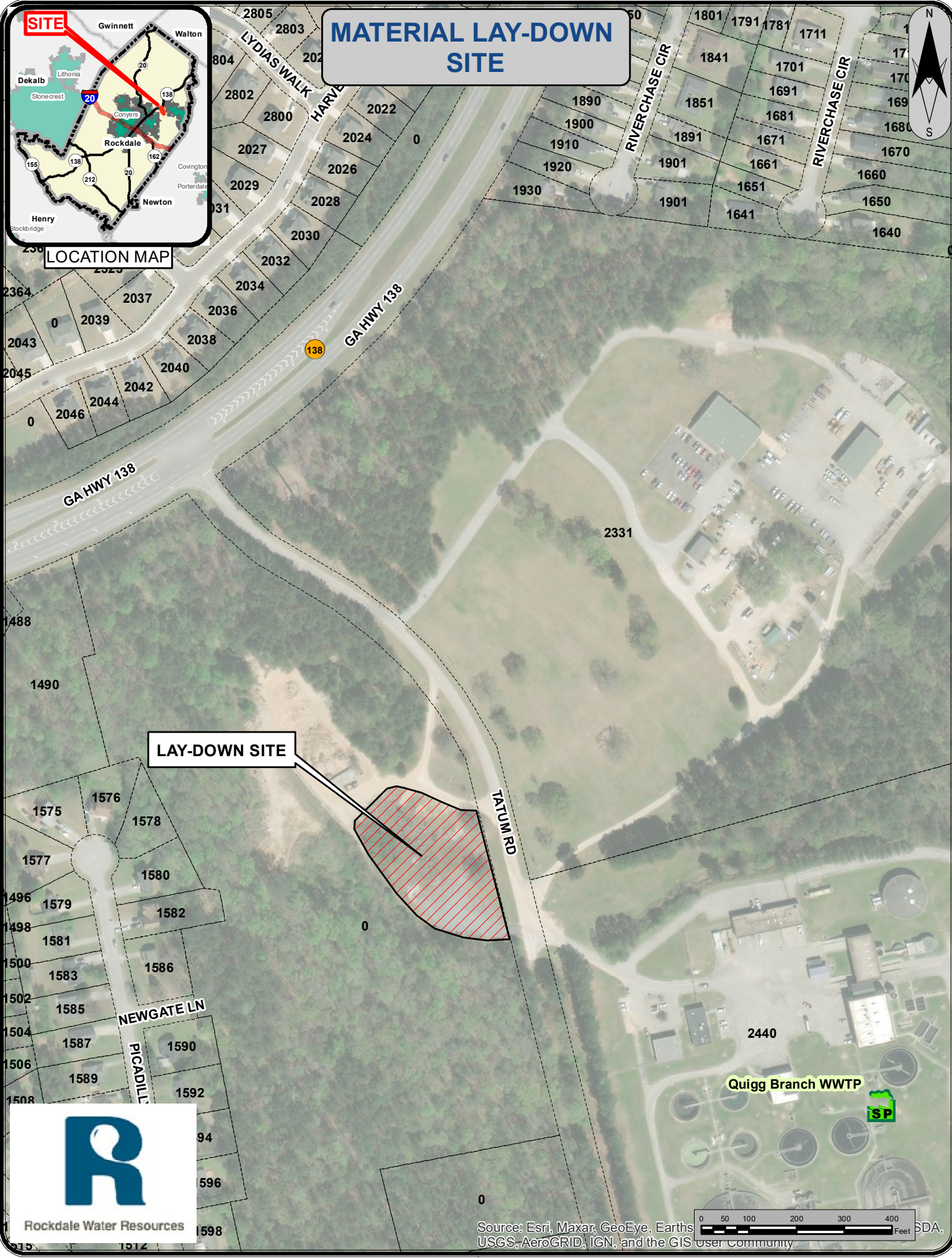
20	ASPHALT DRIVEWAY REMOVAL/REPLACEMENT	240	SF	\$	\$
				figures	figures
21	ASPHALT TRACK REMOVAL/REPLACEMENT	240	SF	\$	\$
				figures	figures
22	CONCRETE CURB REMOVAL/REPLACEMENT	202	LF	\$	\$
				figures	figures
23	CHAIN LINK FENCE REMOVAL/REPLACEMENT	200	LF	\$	\$
				figures	figures
24	GUARDRAIL REMOVAL/REPLACEMENT	100	LF	\$	\$
				figures	figures
25	ROCK EXCAVATION (USED ONLY AS NEEDED*)	3,200	CY	\$	\$
				figures	figures
26	CLEARING	1	ACRE	\$	\$
				figures	figures
27	MOBILIZATION	1	LS	\$	\$
				figures	figures
28	EROSION & SEDIMENTATION CONTROL	1	LS	\$	\$
				figures	figures
29	CONTINGENCY ALLOWANCE(10% OF A TOTAL OF ITEMS 1-28)	1	LS	\$	\$
				figures	figures
	TOTAL BASE BID AMOUNT (ITEMS 1 THROUGH 29)			\$	
				Numerals Only	
	TOTAL BASE BID AMOUNT (ITEMS 1 THROUGH 29)			\$	
				Words Only	

Representative's Signature: _____ Date: _____

MATERIAL LAY-DOWN SITE



LOCATION MAP



LAY-DOWN SITE

Quigg Branch WWTP
SP

