

BOARD OF COMMISSIONERS

OSBORN NESBITT, SR., CHAIRMAN
Sherri L. Washington, Commissioner Post I
Dr. Doreen Williams, Commissioner Post II



DEPARTMENT OF FINANCE
MARK LEWIS, FINANCE DIRECTOR
TELEPHONE: 770-278-7555
FACSIMILE: 770- 278-8910

Addendum No. 8

**RFP No. 23-02
Mental Health Ward Renovations at RC Jail**

April 26, 2023

RFP #23-02 is hereby amended as follows:

1. Below are questions received and corresponding answers:

1. Question: Sheet S-1.0 refers to detail 6/S-2.01 – no detail provided. Please clarify?

Answer: The detail should read 7/S2.01.

2. Question: Are there plans for fire alarm modifications? Please clarify?

Answer: Rockdale County will handle all Fire Alarm Improvements.

3. Question: Have the areas noted to be demolished been tested for lead/asbestos & has a report been prepared?

Answer: No

4. Question: D-4 table/chairs – will the county keep after GC removes or GC to remove & discard?

Answer: Return removed tables to the county.

5. Question: What is the specification for the padded cell materials? Notes R-6 on Sheet A1.01R refers to Marathon Engineering for construction details; please clarify walls, height, etc?

Answer: Provide the Gold Metal padded cell system by Marathon Engineering Corp., 5615 2nd Street West, Lehigh Acres, FL 33913, Phone: (239) 303-7378 | Fax: (239) 303-7364. The product is designed and installed by the manufacturer. Refer to the manufacturer for all details and specifications.

6. Question: Clarify that ALL proposed work in Pods C/D & E/F is add alternates inclusive of MEP, etc?

Answer: As is noted on drawings, all work including MEP work is an ADD Alternate in Pods C, D, E, & F.

BOARD OF COMMISSIONERS

OSBORN NESBITT, SR., CHAIRMAN
Sherri L. Washington, Commissioner Post I
Dr. Doreen Williams, Commissioner Post II



DEPARTMENT OF FINANCE
MARK LEWIS, FINANCE DIRECTOR
TELEPHONE: 770-278-7555
FACSIMILE: 770- 278-8910

7. Question: Are proposed windows to be metal/aluminum & are they to be grouted in place?

Answer: All doors and windows are to be 14 GA security hollow metal and are to be fully grouted.

8. Question: Are proposed door frames to be grouted or not?

Answer: See the answer to Question #7.

9. Question: Sheet A1.01R & A1.02R Note R-7 refers to recessed intercom junction box – since walls are CMU, will surface mounted j-box & ½” conduit be, ok?

Answer: See sheets E1.01 and E1.02 for intercom locations. Exposed conduit is not acceptable in cell areas.

10. Question: Provide specifications for intercom locations per note R-7 on Sheet A1.01R & A1.02R?

Answer: See the answer to Question #9.

11. Question: Provide camera locations/specifications per note R-8 on Sheet A1.01R & A1.02R?

Answer: Omit this scope of work. Camera Conduit / Camera Installation will be a future standalone project.

12. Question: Clarify panic button/double data final location/termination points/specifications as noted R-9, Sheet A1.01R in Exam Rooms – not shown on Sheet E-1.01?

Answer: Locate data ports below the knee space in the millwork. Provide grommet in millwork. Panic button location is shown on E1.01. Contractor to provide Panic Button conduit and pull string to county network switch located in security tower.

13. Question: Note R-11 on Sheet A1.01R & Sheet A1.02R – is this existing or new?

Answer: Contractor to remove/demo two (2) of four (4) existing fixed tables in Pods A/B and Pods G/H; patch and apply matching epoxy paint floor at table demo locations.

14. Question: Note R-12 on Sheet A1.01R, clarify where this occurs, size, dimensions, etc. shown between Staff #6 & Restroom #3?

Answer: See window elevations on Sheet A7.0. Glass to be Oldcastle 7/16” ArmorGarde Plus laminated glass with mirror pane to the inmate side of the hollow metal frame.

BOARD OF COMMISSIONERS

OSBORN NESBITT, SR., CHAIRMAN
Sherri L. Washington, Commissioner Post I
Dr. Doreen Williams, Commissioner Post II



DEPARTMENT OF FINANCE
MARK LEWIS, FINANCE DIRECTOR
TELEPHONE: 770-278-7555
FACSIMILE: 770- 278-8910

15. Question: Note R-13 on Sheet A1.01R & Sheet A1.02R; clarify locations/specifications/quantity?

Answer: Contractor is to install security grade anti ligature shower fixtures. The decontamination shower has an existing floor drain.

16. Question: Who is furnishing & installing the cubicles shown on Sheet A1.01R in Staff #6 Area?

Answer: Rockdale County will supply and install all Staff Area cubicles.

17. Question: Note R-14 on Sheet A1.01R indicates outlet/data to be installed at cubicle locations but not shown on E-1.01, please clarify?

Answer: Provide one double data drop at each workstation. Power is to be provided by the Sheet E1.01.

18. Question: Note R-15 on Sheet A1.01R indicates (2) quad outlets, (1) double data & intercom, but E-1.01 does not, please clarify?

Answer: Provide one quad under the countertop next to each base cabinet. Provide one grommet above each. Provide a box and pull string for the intercom. Intercom to be located above countertop in the middle of the control room. Home run to county network switch located in security tower. Provide double data outlet below counter in center of control room

19. Question: Add alternate Note 1, Add TV over door & below tower windows, please clarify if this in all the Pods or some? Will power/data/low voltage be required at locations & how many? Who supplies the TV(s)?

Answer: Provide one (1) surface mounted double outlet 4.0' above the enter / exit door in Pods A/B and G/H. Provide (1) wall mounted double data outlet adjacent to surface mounted double outlet. Provide data outlet conduit with pull string to county network switch located in the security tower. Rockdale County will supply and install Television and Television Mount.

20. Question: New ceiling grid/tile in Hallway around the Tower, is that part of the base bid or add alternate?

Answer: The ceiling around the control room is in the base bid.

21. Question: Is painting only for new walls/ceilings or all areas?

Answer: Provide new paint in all areas. This includes but is not limited to walls, doors and frames, railings, stairs, and the like.

BOARD OF COMMISSIONERS

OSBORN NESBITT, SR., CHAIRMAN
Sherri L. Washington, Commissioner Post I
Dr. Doreen Williams, Commissioner Post II



DEPARTMENT OF FINANCE
MARK LEWIS, FINANCE DIRECTOR
TELEPHONE: 770-278-7555
FACSIMILE: 770- 278-8910

22. Question: Note FL-1 on Sheet ID4.03, please clarify if epoxy flooring is only for the 1st Floor or also the 2nd Floors in Pods A/B & G/H?

Answer: Provide epoxy painting in showers, dayrooms, and cell floors.

23. Question: Note W1 on Sheet P-1.01 refers to 1-1/2" CW in walls, please clarify since CMU walls are existing?

Answer: Install waterline next to existing wall. Provide 8x8 CMU for chase. Corners of CMU to be rounded. Paint the CMU.

24. Question: Concrete slab cutting is required to provide 1" CW piping to FD-2, please provide concrete slab repair detail?

Answer: Use Loctite PC 9416 epoxy repair compound. Install per manufacturer instructions and trowel to a smooth finish.

25. Question: General notes #5/6 on Sheet P-1.01 refers to add alternate for piping replacement in chase & sinks in Exam Rooms, please clarify.

Answer: Install double wythe 4" CMU to create chase.

26. Question: General notes #7 on Sheet P-1.01 refers to replacement of shower fixtures, provide specifications & quantities?

Answer: See attached. All existing shower fixtures and floor drains area to be replaced. Repair areas affected by the repairs with patching materials and refinish all of the areas as required by the documents.

27. Question: Key notes D-12 on Sheet P2.01 refers to replacement of shower drains, clarify type/quantity & does it refer to all FD-1 shown on drawings?

Answer: See the answer to Question #26.

28. Question: Area indicating new underground sewer sanitary lines not showing new flooring finish, please clarify?

Answer: Floor areas disturbed in padded cells to be patched with Loctite 9416. The new padded cell material will be the floor finish. Install new VCT in entire corridor and exam rooms where the new sewer lateral is installed to the exam rooms. Install FL-1 in Restroom #3.

BOARD OF COMMISSIONERS

OSBORN NESBITT, SR., CHAIRMAN
Sherri L. Washington, Commissioner Post I
Dr. Doreen Williams, Commissioner Post II



DEPARTMENT OF FINANCE
MARK LEWIS, FINANCE DIRECTOR
TELEPHONE: 770-278-7555
FACSIMILE: 770- 278-8910

29. Question: Key notes #2/4 refers to mechanical piping to be run in chase/architectural plans for size/location, please clarify as plans show CMU & no chase?

Answer: See the answer to Question #25.

30. Question: What is the locking mechanism for proposed new doors?

Answer: The manufacturer is Southern Foldger. The locks that are currently in use are 1020AE for hinged doors. The sliders are also from Southern Foldger and are maximum security sliders.

31. Question: Do you have contact information for Securus Telephone System for phones to be relocated?

Answer: Roy D. Thomas M.Th., M.Div.
Senior Client Services Manager
Direct: (972) 277-0790 | Mobile: (469) 900-5717
Roy.thomas@securustechnologies.com

Ashley Jones Harris
Account Manager – Georgia
Securus Technologies, Inc
4000 International Pkwy
Carrollton, Texas 75007
Ashley.jones@securustechnologies.com

32. Question: Request for an extension on proposal submittal dates to allow for additional site visits with subcontractors. Requested extension is for May 11th.

Answer: Rockdale County supports the request.

2. All other conditions remain in full force and effect.
3. If a proposal has been submitted and anything in this Addendum causes the contractor to change the item offered or to increase or decrease the proposal price, the new price and/or changes will be inserted below:

BOARD OF COMMISSIONERS

OSBORN NESBITT, SR., CHAIRMAN
Sherri L. Washington, Commissioner Post I
Dr. Doreen Williams, Commissioner Post II



DEPARTMENT OF FINANCE
MARK LEWIS, FINANCE DIRECTOR
TELEPHONE: 770-278-7555
FACSIMILE: 770- 278-8910

4. All contractors under this Request for Proposal are kindly requested to acknowledge receipt of this Addendum on the Proposal Form, page 13 of this RFP.

Tina Malone

Tina Malone, CPPB CPPO
Purchasing & Procurement Manager
Department of Finance, Purchasing Division

G



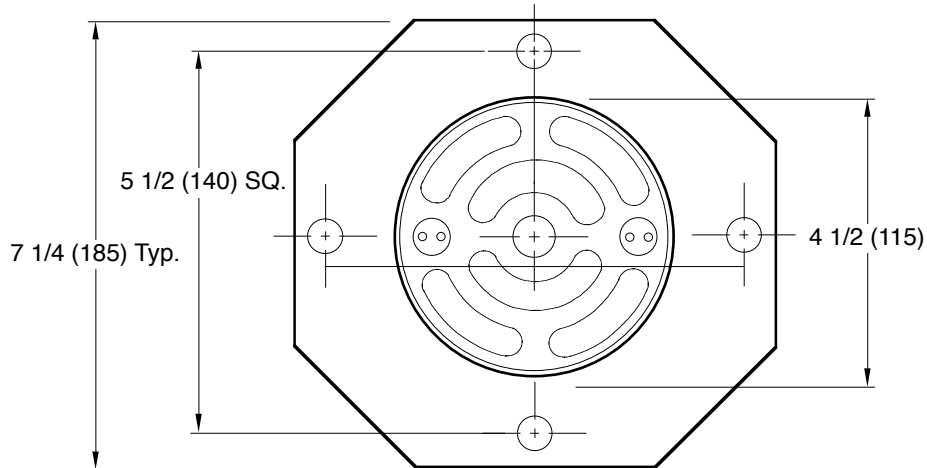
JAY R. SMITH MFG. CO.
 MEMBER OF MORRIS GROUP INTERNATIONAL
 POST OFFICE BOX 3237
 MONTGOMERY, ALABAMA 36109-0237 (USA)
 TEL: 334-277-8520 FAX: 334-272-7396 www.jrsmith.com



MEMBER OF:

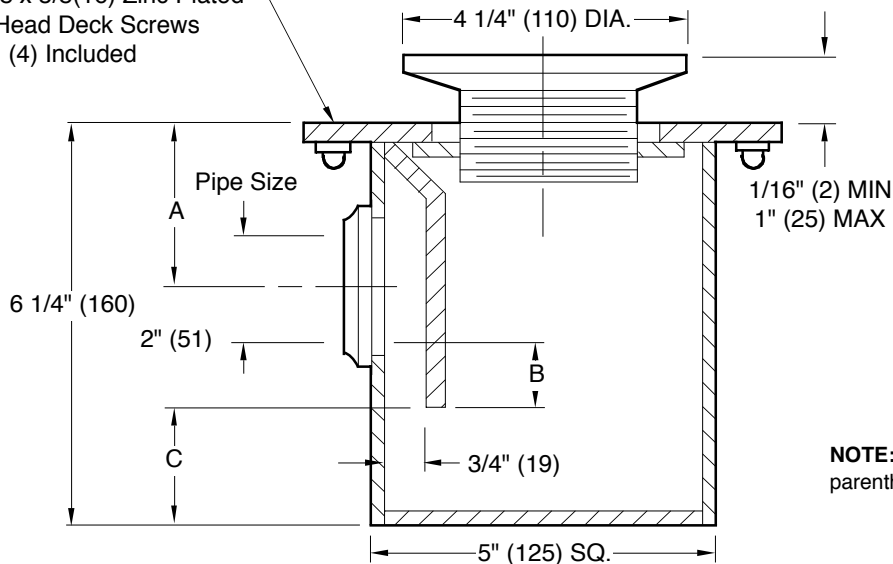
LOCATION

PENAL USE VANDAL PROOF SHOWER DRAIN



TOP VIEW

5/16(8)-18 x 5/8(16) Zinc Plated
 Flat Head Deck Screws
 (4) Included



NOTE: Dimensions shown in parentheses are in millimeters.

REGULARLY FURNISHED:

Galvanized Fabricated Steel
 Body, Flanged Deck Top, Vandal
 Proof Polished Bronze Adjustable
 Strainer Head, Integral Trap and
 Threaded Outlet.

Pipe Size	A	B (Trap Seal)	C
0150 (40)	2 1/2 (64)	1 1/4 (32)	1 3/4 (44)
02 (50)	2 1/2 (64)	1 (25)	1 3/4 (44)
03 (75)	3 (76)	1/2 (13)	1 1/4 (32)

REV.	DATE	DESCRIPTION	BY	CKD. BY
G T E D	10-25-16 11-30-15 04/28/04 4-8-97	Revised Regularly Furnished Revised Table Removed Tab from Strainer Head Added Millimeters	TBW TBW JJ EMB	TWK CL BW BS

WEIGHT
POUNDSVOLUME
CUBIC FEET

FIGURE NUMBER

2016



WARNING: Cancer and Reproductive Harm - www.P65Warnings.ca.gov

DRAWING NUMBER
S2016SIZE
ASCALE:
NONEDATE:
12-11-90APPROVED BY:
McDCHECKED BY:
JMDRAWN BY:
EMB

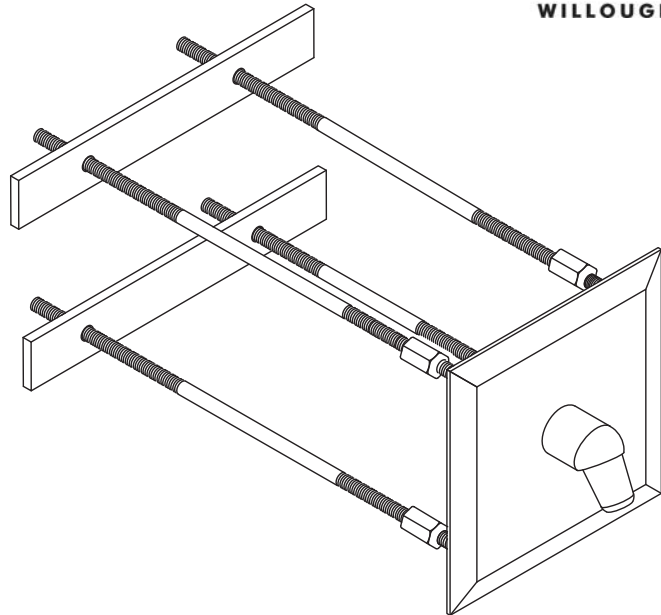
2016

FIGURE
NUMBER

WE CAN ASSUME NO RESPONSIBILITY FOR USE OF SUPERSEDED OR VOID DATA

DIMENSIONS ARE SUBJECT TO MANUFACTURERS TOLERANCE AND CHANGE WITHOUT NOTICE

WBIS Series Rear Mounted Built-In Shower



Recommended Specifications

Rear Mounted Built-In Shower shall be:
Willoughby Model No. **WBIS**
(Select from model number and options list on next page)

Shower head and valve push button face plates shall be fabricated from 14 gauge, Type 304 stainless steel with exposed stainless surfaces polished to a #4 satin finish.

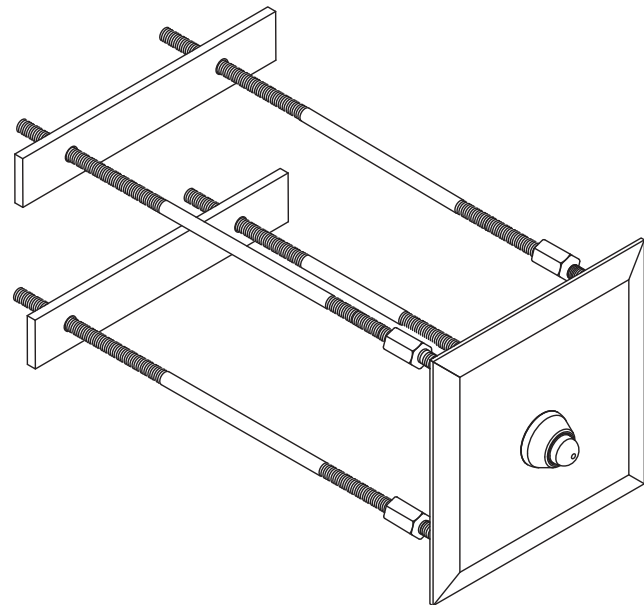
Standard equipment shall include:
- Shower valve (Select from Valve Selection options list)
- (NPS) non-adjustable penal shower head

Anchoring of each component shall be by standard 4-point system: 1/4" threaded rods, nuts and backing bars furnished for walls up to 8" thick. Unit requires chase area for installation and maintenance.

Handicap Accessible:

The WBIS can be installed to conform to most ADA requirements.
(Compliance shall be subject to the requirements of the local code authority based on installation-specific details and is the responsibility of the installer.)

Optional WaterSense Labeled ligature-resistant shower head available (LRSH).



(Unit may be shown with optional features)

To specify fixture and accessories, use the Model Number and Options page.

Example: To specify a Rear Mounted Built-In Shower with single temp. pneumatic metering valve, standard ligature-resistant pneumatic push button, 2.5 GPM flow rate, standard (NPS) shower head, in-line thermostatic mixing valve, and separate recessed mounted soap dish

Use the following Willoughby Model Number:

WBIS-PML1-PBH-2.5GPM-NPS-TMV-RSD1



WARNING: Cancer and Reproductive Harm

- www.P65Warnings.ca.gov



MADE IN THE U.S.A.

visit our website at www.willoughby-ind.com
5105 West 78th Street • Indianapolis, IN. 46268
(317) 875-0830 • Fax: (317) 875-0837 • (800) 428-4065

MODEL NUMBER AND OPTIONS:

1.) Base Model Number:

- WBIS Rear Mounted Built-In Shower

2.) Valve Selection:

- NV No Valve
 PML1 Single Temp. Pneumatic Metering Ⓢ Ⓣ
 PML2 Dual Temp. Pneumatic Metering Ⓢ Ⓣ
 E1L1 Single Temp. Electronic (Pick Control)* Ⓢ Ⓣ
 E1L2 Dual Temp. Electronic (Pick Control)* Ⓢ Ⓣ
 MA2 **Valve Manifold Option** (Pneumatic or Electronic Valves Only):
 (See the Manifold Option Page at the end of
 Catalog Section S5 for further information)

3.) Push Button Selection:

Pneumatic or Electronic Valves Only:

- PBH Ligature-resistant Pneumatic Push Buttons Ⓢ Ⓣ
 PZPB Ligature-resistant Piezo Electronic Push Buttons* Ⓢ Ⓣ

4.) Flow Rates:

- 2.5 GPM (Standard) 2.0 GPM 1.5 GPM

5.) Electronic Controls* (Must Use Electronic Push Button):

- WUSC-2200 WUSC-2400 Pneutronic WMS II

6.) Shower Head Selection:

- NPS Non-adjustable Penal Shower Head (Standard) Ⓢ
 APS Adjustable Penal Shower Head
 CSH Ligature-resistant Shower Head Ⓢ Ⓣ
 LRSB Ligature-resistant Shower Head, WaterSense Labeled,
 2.0 GPM Max Flow Rate Ⓣ

7.) Options:

- TMV In-line Thermostatic Mixing Valve
 TF24H Hard-wired Transformer, 110VAC to 24VAC*
 TF24P Plug-in Transformer, 110VAC to 24VAC*
 SD Surface Mounted Soap Dish (Wall Mounted)
 RSD1 Recessed Soap Dish (In-Wall Mounted) Ⓢ Ⓣ
 Other _____
 Other _____

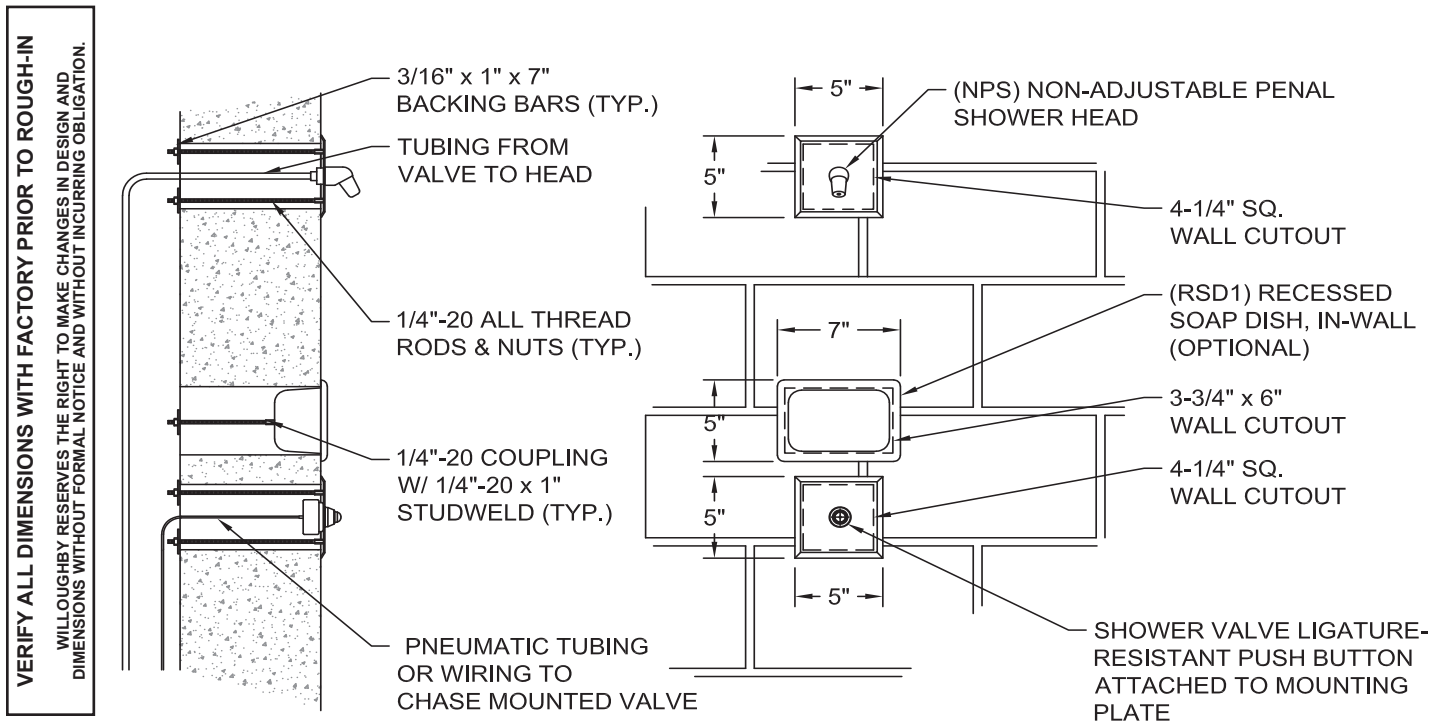
*(Req. 110V power through ground fault interrupter (GFCI) receptacle / breaker)

- Ⓢ For security applications
 Ⓣ Ligature-resistant option**

**LIGATURE-RESISTANT DISCLAIMER

This product is designed to minimize ligature points. While every effort has been made to reduce the possibility of ligature points, this product does not eliminate all risks. Ligature-Resistant products by Willoughby Industries are to be used in conjunction with, not as a replacement for, trained professionals.

Approved For Manufacturing By: _____ Date: _____ Company: _____
 Wall Thickness: _____ Wall Type: _____



visit our website at www.willoughby-ind.com
 5105 West 78th Street • Indianapolis, IN. 46268
 (317) 875-0830 • Fax: (317) 875-0837 • (800) 428-4065



MADE IN THE U.S.A.

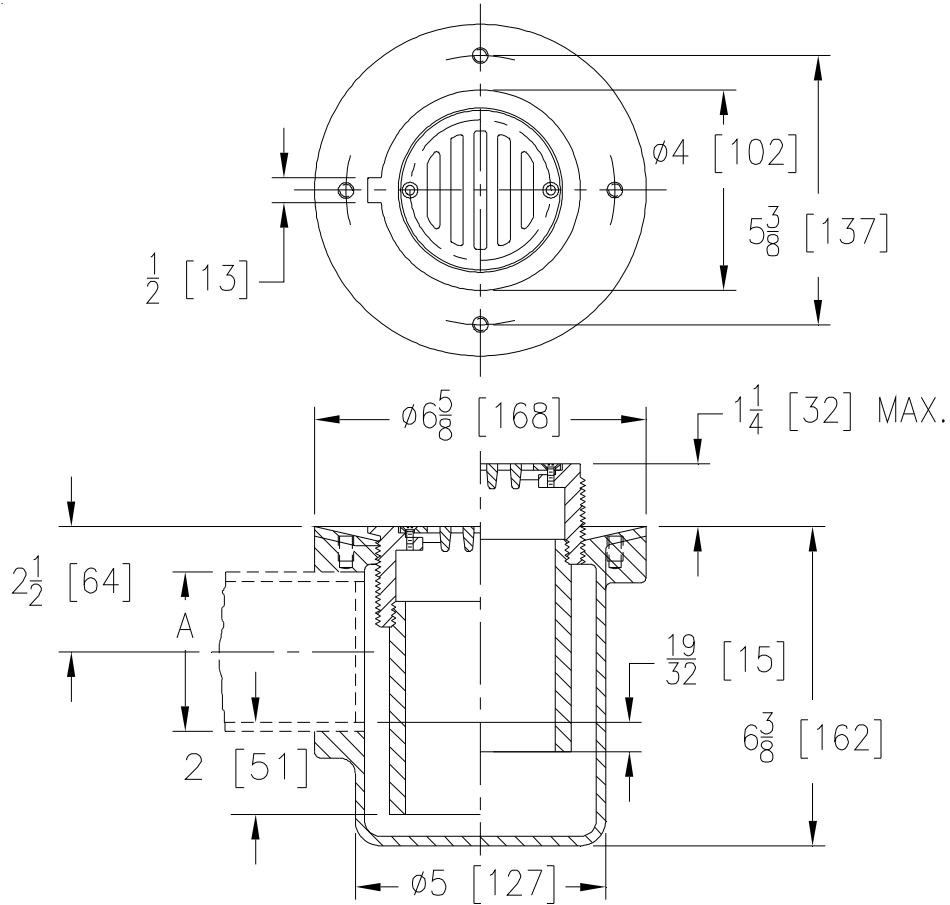


Z355
PRISON CELL FLOOR DRAIN

SPECIFICATION SHEET

TAG _____

Dimensional Data (inches and [mm]) are Subject to Manufacturing Tolerances and Change Without Notice



A-Pipe Size Inches [mm]	Approx. Wt. Lbs. [kg]	Grate Open Area Sq. In. [cm ²]
2 [51]	13 [6]	3.5 [23]
3 [76]	15 [7]	

ENGINEERING SPECIFICATION: ZURN ZN355

Prison cell floor drain, Dura-Coated cast iron body with side outlet, integral trap, anchor flange and adjustable nickel bronze slotted strainer secured with spanner type vandal-proof screws.

OPTIONS (Check/specify appropriate options)

PIPE SIZE

2, 3 [51, 76]

(Specify size) **OUTLET**

____ IP Threaded

PREFIXES

____ ZN D.C.C.I. Body w/ Polished Nickel Bronze Top*

SUFFIXES

____ -G Galvanized Cast Iron

* Regularly furnished unless otherwise specified.