



VISION AND MISSION

ROCKDALE COUNTY STORMWATER MANAGEMENT

Vision

To develop a sustainable stormwater infrastructure for the connected community through educational, protective and restorative systems that benefit ecological and human health.

Mission

To provide efficient, effective and essential stormwater infrastructure services for a highly engaged community network of individuals who live, work and play in Rockdale County.

**ANN
 KIMBROUGH**
 Director

**Deborah
 Mathis-Browder**
 Deputy Director

Martin Ellis
 Construction Maintenance
 Superintendent

Marilyn Arnold
 Financial Customer
 Service Manager

Engineering
 Technician

Engineering
 Technician

Erosion and
 Sediment
 Control
 Specialist

Erosion and
 Sediment
 Control
 Specialist

Infrastructure
 Specialist

Administrative
 Assistant

Foreman

Foreman

Heavy
 Equipment
 Operator

Heavy
 Equipment
 Operator

Heavy
 Equipment
 Operator

Heavy
 Equipment
 Operator

Senior Utility
 Worker

Senior Utility
 Worker

Customer
 Account &
 Business
 Services Liaison

Customer
 Service
 Representative

Customer
 Service
 Representative

OPPORTUNITIES AND CHALLENGES

DEPARTMENT'S SUCCESSES, OPPORTUNITIES, AND CHALLENGES

Successes

- Rapid response crew reverse April 19, 2019 flooding crises
- State regulatory approval of 2020 plans
- CIP 2020 added 68.9 linear feet to county inventory
- Updated ordinances improve quality of life

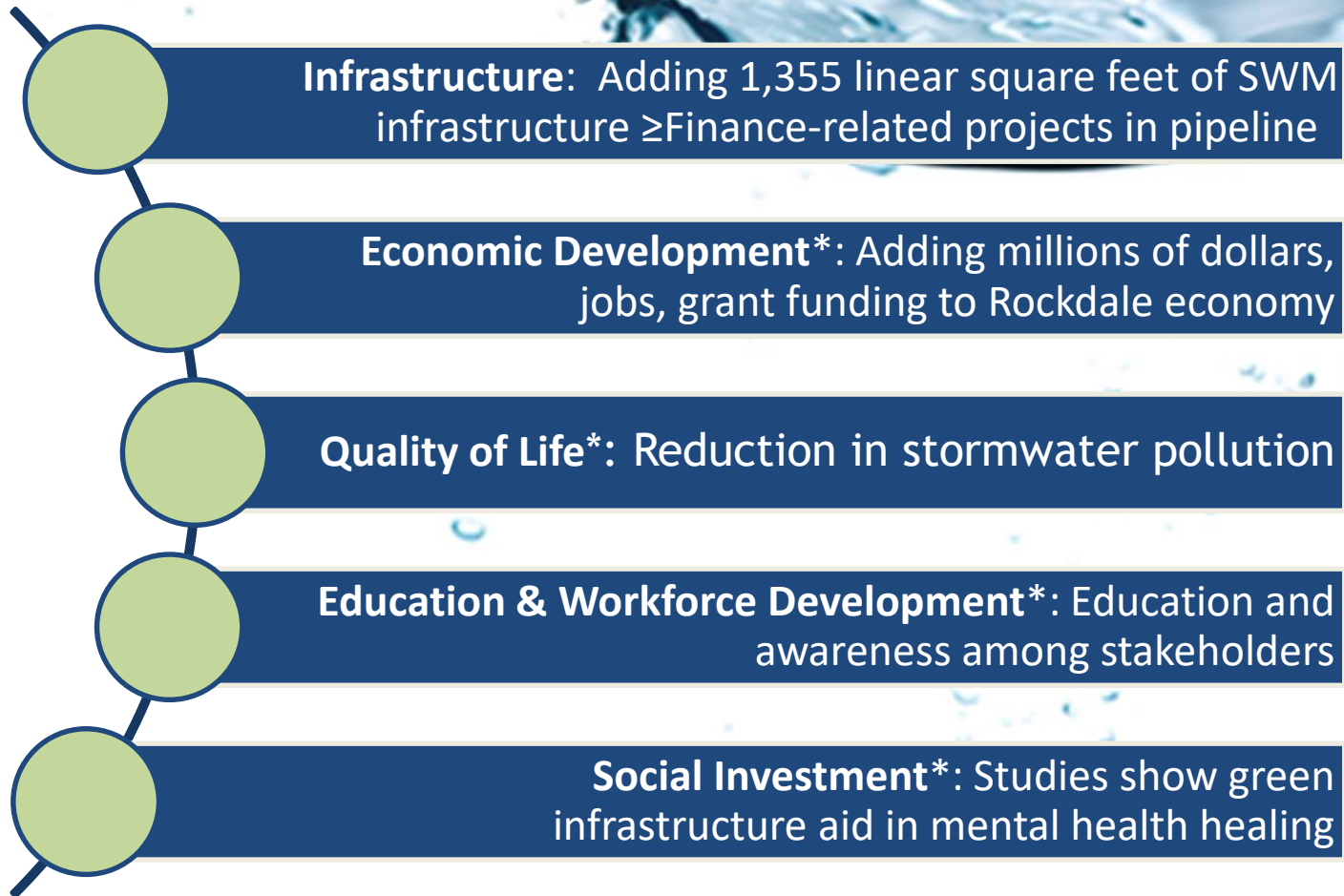
Opportunities

- Outreach and education
- Funding for 6,000 projects
- Green infrastructure

Challenges

- 40+ years of neglect to stormwater infrastructure
- Managing customers' expectations
- Staffing and training

Commissioners' Priorities - Envision Rockdale



BUDGET SUMMARY

	2019 Actual	2021 Request/Estimate
Total Personnel Services & Benefits	\$1,276,324	\$1,458,042
Total Operating Expenses	\$1,221,849	\$1,537,385
Total	\$2,498,173	\$2,995,427