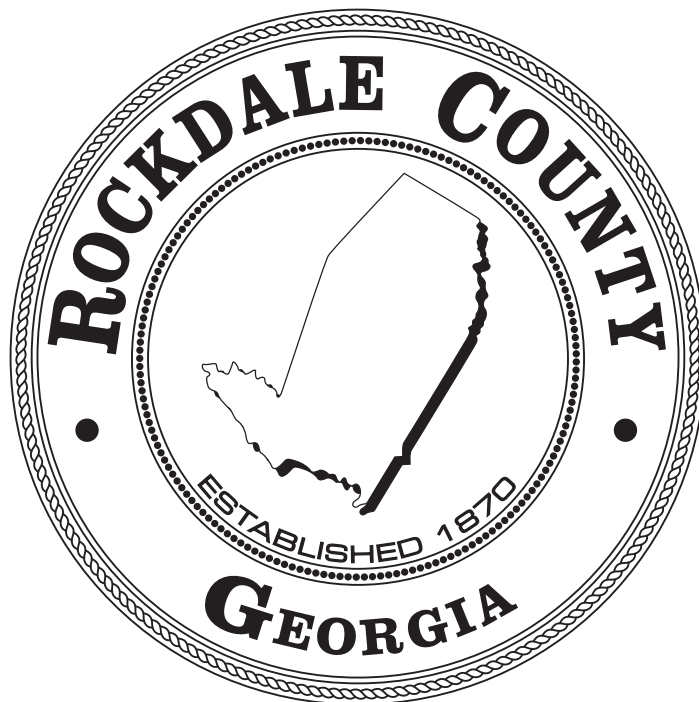


A GUIDE TO

ROCKDALE

COUNTY

SERVICES





CONTENTS

FORWARD AND OVERVIEW.....	3
ROCKDALE COUNTY HISTORY.....	4
ROCKDALE COUNTY GOVERNMENT.....	5
ROCKDALE COUNTY ORGANIZATION CHART.....	6
ROCKDALE COUNTY ELECTED OFFICIALS.....	7
A-Z DEPARTMENT/SERVICES DIRECTORY.....	8-13
OTHER TELEPHONE NUMBERS TO KNOW.....	13
CITY OF CONYERS.....	14
ROCKDALE COUNTY PUBLIC SCHOOLS.....	15





FORWARD

This booklet was created to help citizens and visitors easily find the information they seek on Rockdale County government.

The founding vision for this publication was to develop a telephone directory that is arranged by topics so that even if you know nothing about the way Rockdale County government is organized, you can quickly locate the department that administers the services you need.

While the publication focuses primarily on Rockdale County, we have also included frequently called phone numbers for the City of Conyers, the Rockdale County Public School system, and several other government-related entities.

OVERVIEW

Rockdale County is located 24 miles east of Atlanta on Interstate I-20. It is approximately 132 square miles in size—the second smallest of Georgia's 159 counties—and has a population estimated by the Atlanta Regional Commission of 90,000. The County seat is the City of Conyers, which has a population of approximately 16,200 and is the only city within Rockdale County.

Rockdale County is governed by a three-member board of Commissioners, which includes a full-time chairman and two part-time commissioners. Commission members are elected at partisan, at-large elections to serve staggered terms of four years each.

The Chairman of the Board Commissioners serves as the chief executive officer of the County Government and generally supervises, directs and controls the day-to-day operations of the County. The directors of all County-run departments, with the exception of those headed by other elected officials, report to the Chairman of the Board of Commissioners. Among the services provided by the County government are public safety, planning and zoning, parks and recreation, public works, senior services, code enforcement, water and sewer.

In addition to county Commissioners, the following local positions are elected by Rockdale voters: Superior, State, Magistrate and Probate judges; Clerk of Court; District Attorney; Sheriff; Tax Commissioner and Coroner.

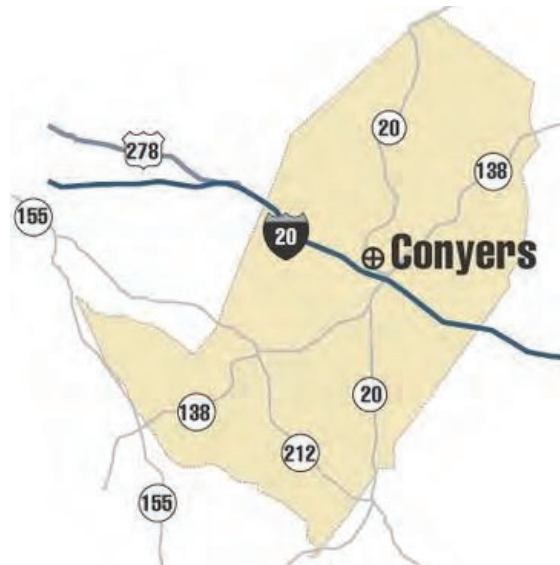


ROCKDALE COUNTY HISTORY

Rockdale County was created on October 18, 1870 and received its name from Rockdale Baptist Church (est. 1846), which was named after the granite strata that rests under the county's red clay top soil. A bill introduced by John F. Hardin and John Harris carved Rockdale out of the northern portion of Newton County; parts of Rockdale County also came from neighboring Henry, Walton, Gwinnett, and DeKalb counties.

Conyers, Rockdale's only incorporated town and urban center, became the county seat. Conyers was home to the prosperous mill community known as Milstead. The Village of Milstead, located two miles north of Olde Town Conyers, was once home to Milstead Manufacturing Company, later known as Callaway Mills. In its day it was a bustling, closely-knit, industrial town located on the banks of the Yellow River.

With the construction of Interstate 20 through Rockdale County in the 1960s, the community began to change again. Olde Town Conyers gave way slowly to development along West Avenue and the I-20 access roads, then south along Georgia Highway 20/138, creating a business district of bright signs and national chains. During the 60s, the team of Gus Barksdale and Clarence Vaughn joined other influential citizens and the Chamber of Commerce in bringing numerous major businesses to Rockdale County. With new schools and the highest paid teachers in the area, Conyers and Rockdale County became a draw for young families.



Access to Atlanta became quick and easy for Rockdale residents. The summer of 1996 was an exciting time in Conyers-Rockdale County's history. Over 600,000 visitors visited the community during the period of the Centennial Olympic Games. Visitors thrilled to equestrian events, first-ever mountain bike competition and the final two events of the modern pentathlon at Conyers' Olympic venue, the Georgia International Horse Park. The Olympics put Conyers and Rockdale County not only on the map but in the minds of thousands that soon began relocating their homes, families and businesses to the area. It is a combination of small town and big city, of rural scenes and urban shopping.



ROCKDALE COUNTY GOVERNMENT

ELECTED OFFICIALS

BOARD OF COMMISSIONERS

BOARD OF COMMISSIONERS: Main: 770-278-7001 Fax: 770-278-8900

Chairman, Oz Nesbitt, Sr., 770-278-7003

oz.nesbitt@rockdalecountyga.gov

Post I Commissioner, Sherri L. Washington, Esq., 770-278-7014

sherri.washington@rockdalecountyga.gov

Post II Commissioner, Doreen Williams, Ph.D., 770-278-7008

doreen.williams@rockdalecountyga.gov

Superior Court Chief Judge David B. Irwin, Main: 770-278-7740

Superior Judge Robert F. Mumford, Main: 770-278-7690

State Court Judge Nancy Bills, Main: 770-278-7720

Magistrate Court Judge Phinia Aten, Main: 770-278-7800

Probate Court Judge Clarence Cuthpert, Main: 770-278-7700

District Attorney Alisha Johnson, Main: 770-278-7990

Sheriff's Office Eric Levett, Main: 770-278-8000

Tax Commissioner Tisa Smart-Washington, Main: 770-278-7600

Coroner George Levett, Main: 770-278-7390

Clerk of Superior/State Court Clerk Of Courts, Jamie Cabe, Main: 770-278-7900

APPOINTED OFFICIALS

Juvenile Court Judge Maureen Wood, Main: 770-278-7761

Public Defender Steven Purvis, Main: 770-278-7820

County Departments

-- Chief of Staff, Main: 770-278-7015

-- Board Of Assessors, Main: 770-278-7676

-- County Attorney M. Qader A. Baig Main: 770-929-1665

-- County Clerk/Legislative, Main: 770-278-7009

-- Finance, Director, Main: 770-278-7555

-- Fire-Rescue, Director/Chief, Main: 770-278-8401

-- Planning & Development, Main: 770-278-7100

-- Public Relations, Main: 770-278-7050

-- Recreation & Maintenance, Main: 770-278 -7282

-- Stormwater, Main: 770-278-7155

-- Talent Management, Main: 770-278-7575

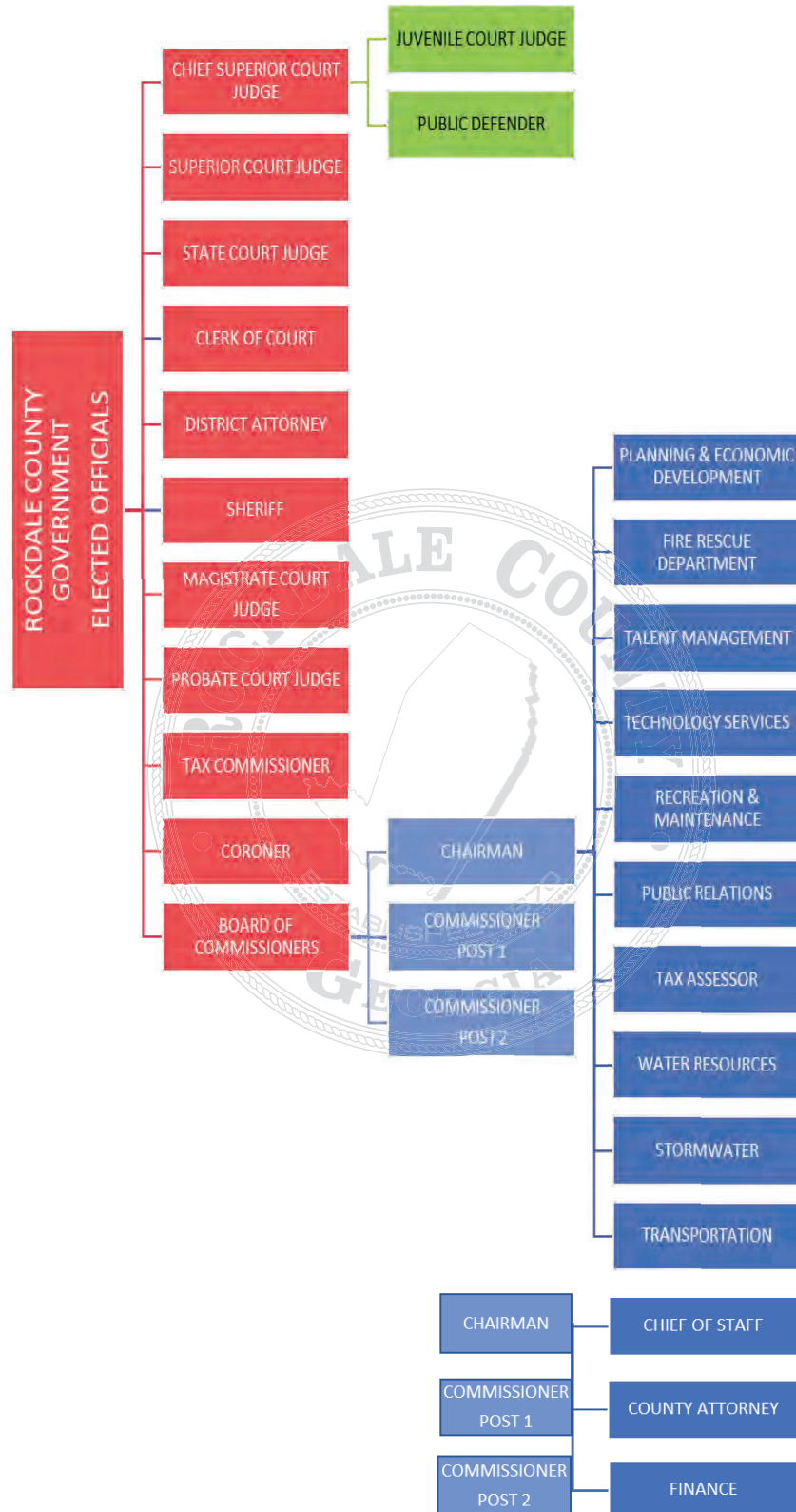
-- Technology Services, Main: 770-278-7070

-- Transportation, Main: 770-278-7200

-- Water Resources, Main: 770-278-7450



ROCKDALE COUNTY ORGANIZATION CHART





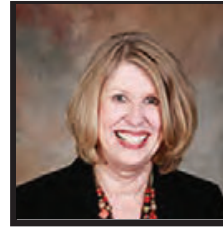
ROCKDALE COUNTY ELECTED OFFICIALS



Chairman
Oz Nesbitt, Sr.



Commissioner Post 1
Sherri L. Washington



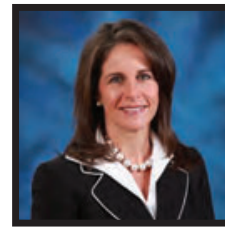
Commissioner Post 2
Dr. Doreen Williams



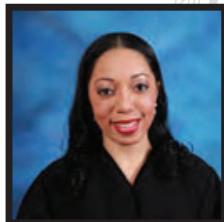
**Superior Court
Chief Judge**
David B. Irwin



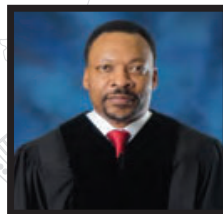
Superior Judge
Robert F. Mumford



State Court Judge
Nancy Bills



**Magistrate Court
Judge**
Phinia Aten



**Probate Court
Judge**
Clarence Cuthpert



District Attorney
Alisha Johnson



Sheriff
Eric Levett



Tax Commissioner
Tisa
Smart-Washington



Coroner
George Levett



Clerk of Courts
James McCabe



ANIMAL CARE & CONTROL Main: 770-278-8403

BLACK SHOALS PARK & RANDY POYNTER LAKE

Main: 770-278-7246 jprec@rockdalecountyga.gov

BOARD OF ASSESSORS: Fax: 770-278-8906

To Request Property Information: boa@rockdalecountyga.gov

BOARD OF COMMISSIONERS: Main: 770-278-7001 Fax: 770-278-8900



Chairman, Oz Nesbitt, Sr.: 770-278-7011

oz.nesbitt@rockdalecountyga.gov

Post I Commissioner, Sherri L. Washington: 770-278-7014

sherri.washington@rockdalecountyga.gov

Post II Commissioner, Doreen Williams, Ph.D.: 770-278-7008

doreen.williams@rockdalecountyga.gov

BURN PERMITS

Main: 1-877-652-2876 visit: www.gatrees.org

CAPITAL & COMMUNITY IMPROVEMENTS

Main: 770-278-7090 Fax: 770-278-8909

CAR TAGS & TITLES

Main: 770-278-7600

CHILD SAFETY SEATS

Main: 404-416-5547

CORONER Main: 770-278-7390

Email: coroner@rockdalecountyga.gov

COSTLEY MILL PARK

Main: 770-278-7209



COUNTY ATTORNEY

M. Qader A. Baig & Associates, LLC, Main: 770-929-1665



COURT SERVICES

SUPERIOR COURT CHIEF JUDGE

DAVID B. IRWIN

Main: 770-278-7740 Fax: 770-278-8926

SUPERIOR COURT JUDGE

ROBERT F. MUMFORD

Main: 770-278-7690 Fax: 770-278-8927

STATE COURT JUDGE NANCY BILLS

Main: 770-278-7720 Fax: 770-278-8950



MAGISTRATE COURT JUDGE PHINIA ATEN

Main: 770-278-7800 Fax: 770-278-8915

PROBATE COURT JUDGE CLARENCE CUTHPERT

Main: 770-278-7700 Fax: 770-278-8928

JUVENILE COURT JUDGE MAUREEN WOOD

Main: 770-278-7777 Fax: 770-278-8935

DISTRICT ATTORNEY ALISHA JOHNSON

Main: 770-278-7990 Fax: 770-278-8931

CLERK OF SUPERIOR/STATE COURT

Clerk of Courts, Jamie Cabe: 770-278-7863

Main: 770-278-7900 Fax: 770-278-7921

State Court: Fax: 770-278-8922

PUBLIC DEFENDER STEVEN PURVIS

Main: 770-278-7820 Fax: 770-918-6313

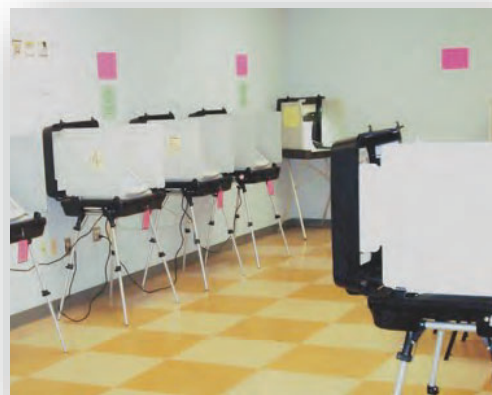
ELECTIONS/VOTER REGISTRATION

Main: 770-278-7333

EMPLOYMENT

Main: 770-278-7575

Email: TalentManagement@rockdalecountygga.gov



ENVIRONMENTAL HEALTH Main: 770-278-7340

EXTENSION SERVICE Main: 770-278-7373 uge1247@uga.edu



FACILITY RENTALS (For availability and fees call 770-278-7246)

Black Shoals Retreat House
Costley Mill Park
C. E. Steele Center
Earl O'Neal Sports Complex
Johnson Park Recreation Center
J. P. Carr Community Center
Pine Log Park
Rockdale County Auditorium
Wheeler
Veterans Park Amphitheatre

FIRE & RESCUE Main: 770-278-8401

FIRE SAFETY Main: 770-278-8401

FINANCE Main: 770-278-7555

JOHNSON PARK RECREATION CENTER

Main: 770-278-7246 jprec@rockdalecountyga.gov

JURY DUTY Main: 770-278-7900

KEEP CONYERS-ROCKDALE BEAUTIFUL

Staff Liaison: 770-278-7052

kcrb@rockdalecounty.org

LICENSES

Alcohol Beverage License, Main: 770-278-7137

Business License, Main: 770-278-7137

Email: businesslicense@rockdalecountyga.gov

Marriage License, Main: 770-278-7700

Pistol License, Main: 770-278-7700

PARKS & RECREATION

Main: 770-278-7246 jprec@rockdalecountyga.gov





PARKS

**Black Shoals Park and Randy Poynter Lake, 3001*

Black Shoals Road, Conyers, 30012

**Costley Mill Park, 2455 Costley Mill Road, Conyers, 30013*

**Earl O'Neal Sports Complex, 2709 Old Covington Road, Conyers, 30013*

**Johnson Park, 1781 Ebenezer Road, 30094*

**Lakeview Estates Park, 2500 Lake Rockaway Road, Conyers, 30012*

**Lakeview Estates Park #2, 50 Skyline Drive, Conyers, 30012*

**Milstead Park & Splashpad, 1665 Main Street, Conyers, 30012*

**Pine Log Park, 1451 Pine Log Road, Conyers, 30012*

**Richardson Park, 3779 Union Church Road, Stockbridge, 30281*

**Dog Park at Richardson Park, 3779 Union Church Road, Stockbridge, 30281*

**Shady Grove Park, 2100 Old Covington Road, Conyers, 30013*

**South Rockdale Community Park, 3939 E. Fairview Road, Stockbridge, 30281*

**South Rockdale Park Mountain Bike Trail, 3939 E. Fairview Road, Stockbridge, 30281*

**Veterans War Memorial, 3001 Black Shoals Road, Conyers, 30012*

**Wheeler Park, 1350 Parker Road, Conyers, 30094*



PLANNING & DEVELOPMENT Main: 770-278-7100

Code Enforcement: 770-278-7103

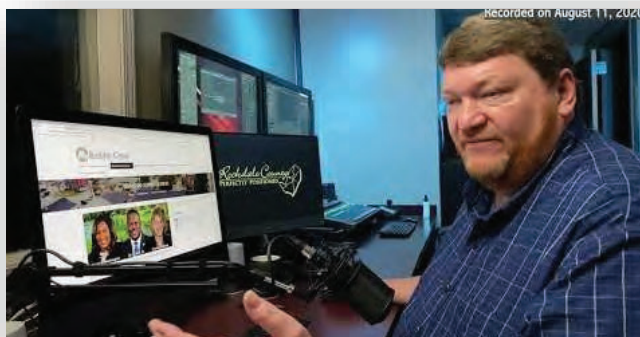
Code.ViolationsMailbox@rockdalecountyga.gov

Email: planning@rockdalecountyga.gov

Email: businesslicense@rockdalecountyga.gov

Email: inspections@rockdalecountyga.gov

PUBLIC RELATIONS Main: 770-278-7050 publicrelations@rockdalecountyga.gov





RECYCLING CENTER, Main: 770-785-6883

TALENT MANAGEMENT Main: 770-278-7575
TalentManagement@rockdalecountyga.gov

TENNIS CENTER 1350 Parker Road, Conyers, 30094
Main: 770-278-7251



RECREATION & MAINTENANCE Main: 770-278 -7282

ROCKDALE CHANNEL 23 Main: 770-278-7050
Email: publicrelations@rockdalecountyga.gov

SENIOR CENTER Main: 770-278-7230

SHERIFF'S OFFICE Main: 770-278-8000

STORMWATER
Main: 770-278-7155
Email: rcswu@rockdalecountyga.gov

TAX COMMISSIONER
Main: 770-278-7600

TRANSPORTATION
Main: 770-278-7200





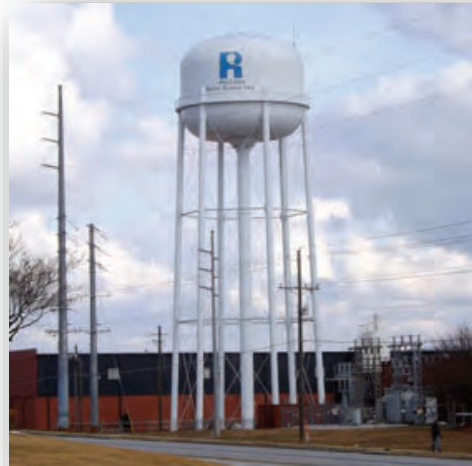
WATER RESOURCES Main: 770-278-7450

Customer Svc/Billing: 770-278-7400

Call Center (24/7): 770-278-7500

Email: rwrfeedback@rockdalecountyga.gov

ZONING Main: 770-278-7100



Other Numbers To Know:

Conyers-Rockdale Chamber of Commerce: 770-483-7049

Conyers-Rockdale Nancy Guinn Memorial Library: 770-388-5040

City of Conyers Municipal Court: 770-929-4208

Georgia State Patrol: 770-464-1800

Georgia Dept. of Driver Services: 678-413-8650

Housing Authority of Conyers: 770-483-9301

Rockdale Family & Child Services: 770-388-5028

Rockdale Piedmont Medical: 770-918-3000

Veteran Services: 770-388-5075





**CITY OF
CONYERS**
Celebration of Community

CITY OF CONYERS

The City of Conyers Government Complex
1184 Scott Street, Conyers, Georgia

Conyers Welcome Center
901 Railroad Street, Conyers, Georgia 30012

FREQUENTLY REQUESTED PHONE NUMBERS:

Administration/Finance: 770-483-4411

City Clerk: 770-929-4226

City Hall: 770-483-4411

City Manager's Office: 770-929-4226

Chief of Police's Office: 770-929-4201

Conyers Convention and Visitors Bureau: 770-929-4270

Conyers Police Department (non-emergency): 770-483-6600

Conyers Police Department (emergency): 9-1-1

Conyers Security Alert: 770-929-4294

Conyers Welcome Center: 770-602-2606

Court Services: 770-929-4208

Georgia International Horse Park: 770-860-4190

Human Resources: 770-929-4241

Planning and Inspection Services: 770-929-4280

Public Relations and Tourism: 770-929-4299

Public Works and Transportation: 770-785-6690

Stormwater Services: 770-929-3044





ROCKDALE COUNTY PUBLIC SCHOOLS

954 North Main Street, Conyers, GA 30012
Office: 770-483-4713 Fax: 770-860-4266
rcpsinfo@rockdale.k12.ga.us



Board of Education

Superintendent:

Dr. Terry Oatts, Main: (770) 860-4211, Email: toatts@rockdale.k12.ga.us

Board Members:

Mandy North (Chair), Main: (770) 860-4209,
Email: mandy.north@rockdale.k12.ga.us

Pamela J. Brown (Vice Chair), Main: (770) 860-4202,
Email: pam.brown@rockdale.k12.ga.us

Wales F. Barksdale, Main: (770) 860-4203,
Email: wales.barksdale@rockdale.k12.ga.us

Tony Dowdy, Main: (770) 860-4205,
Email: tony.dowdy@rockdale.k12.ga.us

Heather Duncan, Main: (770) 860-4204,
Email: heather.duncan@rockdale.k12.ga.us

Sandra Jackson-Lett, Main: (770) 860-4200,
Email: sandra.jackson@rockdale.k12.ga.us

Jim McBrayer, Main: (770) 860-4201,
Email: jim.mcbrayer@rockdale.k12.ga.us

ELEMENTARY SCHOOLS

Barksdale Elementary School: 770-483-9514, 596 Oglesby Bridge Road,
Conyers, GA 30094, Email: bes.rockdaleschools.org

C. J. Hicks Elementary School: 770-483-4410, 1300 Pine Log Road, Conyers, GA 30012,
Email: cjh.rockdaleschools.org



ROCKDALE COUNTY PUBLIC SCHOOLS

ELEMENTARY SCHOOLS—*Continued*

Flat Shoals Elementary School: 770-483-5136, 1455 Flat Shoals Road, Conyers, GA 30013,
Email: fse.rockdaleschools.org

Hightower Trail Elementary School: 770-388-0751, 2510 Highway 138 NE, Conyers, GA
30013, Email: hte.rockdaleschools.org

Honey Creek Elementary School: 770-483-5706, 700 Honey Creek Road, Conyers, GA 30094,
Email: hce.rockdaleschools.org

J.H. House Elementary School: 770-483-9504, 2930 Highway 20 North Conyers, GA 30012,
Email: jhh.rockdaleschools.org

Lorraine Elementary School: 770-483-0657, 3343 East Fairview Road
SW, Stockbridge, GA 30281, Email: les.rockdaleschools.org

Peek's Chapel Elementary School: 770-761-1842, 2800 Avalon Park-
way Conyers, GA 30094, Email: pce.rockdaleschools.org

Pine Street Elementary School: 770-483-8713, 500 Sigman Road, Co-
nyers, GA 30012, Email: pse.rockdaleschools.org

Shoal Creek Elementary School: 770-929-1430, 1300 McWilliams
Road, Conyers, GA 30094, Email: sce.rockdaleschools.org

Sims Elementary School: 770-922-0666, 1821 Walker Road, Conyers,
GA 30094, Email: ses.rockdaleschools.org



MIDDLE SCHOOLS

Conyers Middle School: 770-483-3371, 400 Sigman Road, Conyers, GA 30012,
Email: cms.rockdaleschools.org

General Ray Davis Middle School: 770-388-5675, 3375 E. Fairview Road, SW, Stockbridge,
GA 30281, Email: dms.rockdaleschools.org

Edwards Middle School: 770-483-3255, 2633 Stanton Road, Conyers, GA 30094,
Email: ems.rockdaleschools.org



ROCKDALE COUNTY PUBLIC SCHOOLS

MIDDLE SCHOOLS—*Continued*

Memorial Middle School: 770-922-0139, 3205 Underwood Road, Conyers, GA 30013, Email: mms.rockdaleschools.org



HIGH SCHOOLS

Heritage High School: 770-483-5428, 2400 Granade Road, Conyers, GA 30094, Email: hhs.rockdaleschools.org

Rockdale County High School: 770-483-8754, 1174 Bulldog Circle, Conyers, GA 30012, Email: rchs.rockdaleschools.org

Rockdale Magnet School for Science and Technology: 770-483-8737, 930 Rowland Road, Conyers, GA 30012, Email: magnet.rockdaleschools.org

Salem High School: 770-929-0176, 3551 Underwood Road, Conyers, GA 30013, Email: shs.rockdaleschools.org



Open Campus: 770-860-4272, 1115 West Avenue, Conyers, GA 30012, Email: oc.rockdaleschools.org

Rockdale Career Academy: 770-388-5677, 1064 Culpepper Drive, Conyers, GA 30094, Email: rca.rockdaleschools.org

Alpha Academy: 770-922-8636, 1045 North Street, Conyers, GA 30012, Email: alpha.rockdaleschools.org

FREQUENTLY REQUESTED PHONE NUMBERS:

RCPS Central Office Front Desk: 770-483-4713
Student Registration: 770-761-1440, 770-761-1441
Transportation (School Zones): 770-860-4250
Free and Reduced Lunch: 770-860-4223
Human Resources, Front Desk and Employment Verification: 770-918-6183
Human Resources, Benefits: 770-860-4225
Human Resources, Certified Employee Salary: 770-860-4227





ROCKDALE COUNTY WATER TREATMENT PLANT



BLACK SHOALS PARK AT RANDY POYNTER LAKE





A Guide to Rockdale County Services
was created and produced by

The Rockdale County Public Relations Department

958 Milstead Avenue
Conyers, Ga 30012
Telephone: 770-278-7050
Email: publicrelations@rockdalecountyga.gov
www.rockdalecountyga.gov

Follow Rockdale County on social media:

@rockdalegov



Tune in to Rockdale County Government

@rockdalegov



Search Rockdale 23 on YouTube



