

Vision and Mission

ROCKDALE COUNTY MISSION STATEMENT

Rockdale is a perfectly-positioned community with a rock-solid approach dedicated to excellence in customer service, quality of life and global economic development.

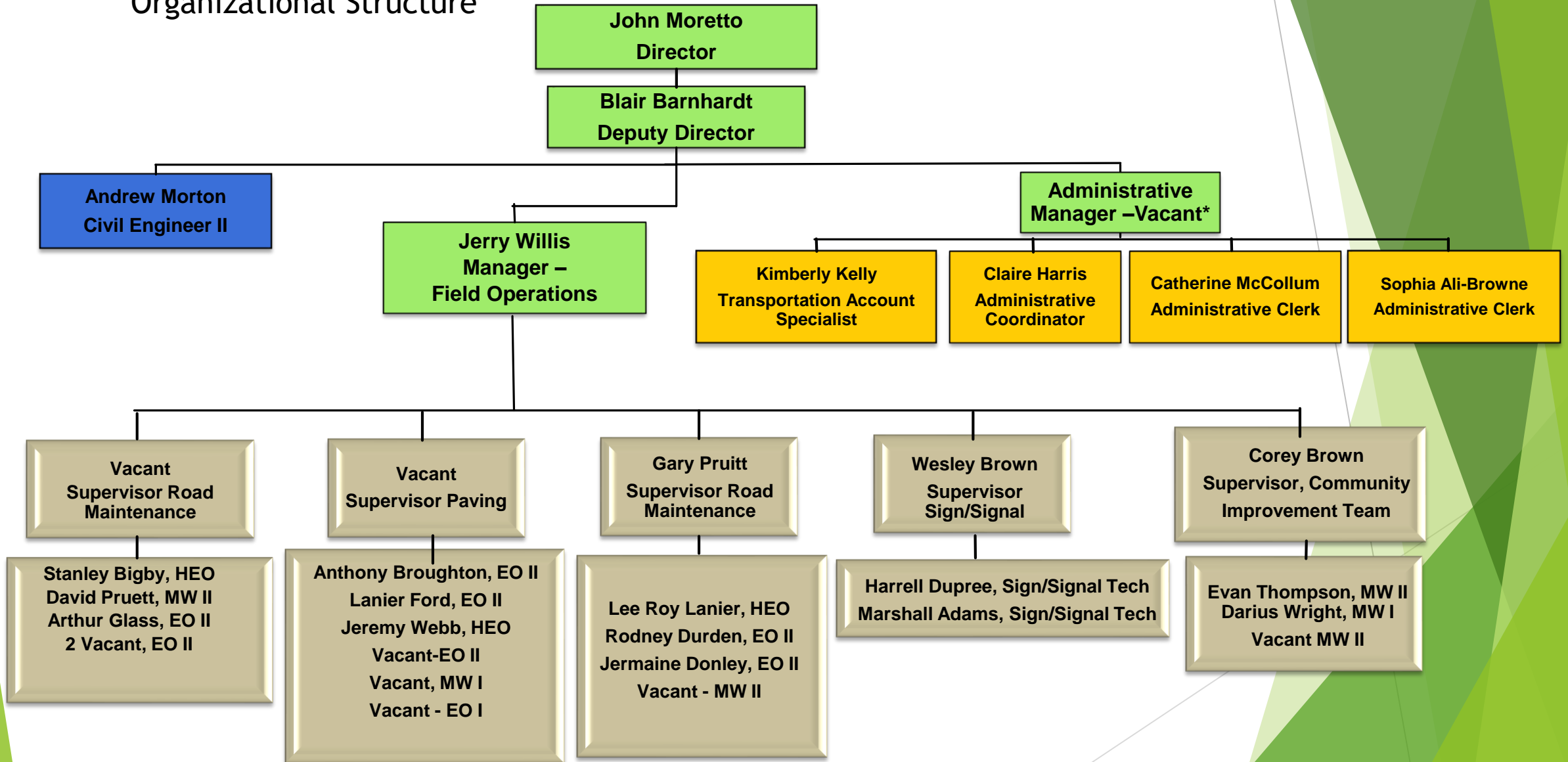
DEPARTMENT MISSION STATEMENT

The mission of the Rockdale County Department of Transportation is to be responsive to the citizens of the county by constructing and maintaining a Transportation network that promotes the safe and efficient movement of people and goods within and throughout the county; by adequately supporting Economic Development activity; and by supporting an attractive community image.

Department Structure

Budgeted Positions - 33

Organizational Structure



Opportunities and Challenges

Successes:

- 3 Active Multimillion Dollar Projects
- SPLOST 2A & SPLOST 3A
- LMIG 2019/2020
- 2 Roadway Blitzes
- County-wide Guardrail Inventory
- New High-Level Initiatives -S.E.O. (Safety/Efficiency/Outreach)
- Approved 76 Encroachment Permits & Reviewed 27 Land Disturbance Permits
- 361 Completed Work Requests from Concerned Citizens

Opportunities:

- Community Outreach for Litter Prevention
- Additional Equipment (efficiency)
- Build Grant for Courtesy Parkway
- Completion of Local Road Safety Plan

Challenges:

- COVID-19 impacts and responses

Commissioners' Priorities - Envision Rockdale

2021 Envision Rockdale Strategic Plan



Commissioners' Priorities - Envision Rockdale

2021 Envision Rockdale Strategic Plan

Economic Development

- Improve County beautification of I-20 with upgraded fencing
- Enhance landscaping maint. at Salem Road, Sigman Road and SR 138 interchanges on I-20.
- Develop a plan for enhancing the welcoming gateways into Rockdale County
- Increase community awareness around dumping and cleanliness alongside Code Enforcement
- Consider additions to equipment and education from Community Improvement Team

Commissioners' Priorities - Envision Rockdale

2021 Envision Rockdale Strategic Plan

Infrastructure & Transportation

- Design and get ROW for Sigman Road Phase III & IV for better truck movement and economic expansion
- Construct Sigman Road Phase II to accommodate more east/west movement and business use to I-20.
- Improve flow from I-20 heading south to Newton County on SR 162/Salem Road
- Rebuild bridge at Honey Creek Road over Snapping Shoals Creek
- Install safety lighting and video access at Sigman and Salem Road
- Improve road safety near McDaniel Mill, Klondike & Hurst Roads with a roundabout.

Commissioners' Priorities - Envision Rockdale

2021 Envision Rockdale Strategic Plan

Quality of Life

- Continue sustainability efforts to reuse asphalt millings to improve gravel road quality and evaluate its quality
- Continue to address pothole concerns within a 24-72 hour period.
- Increase 70 street quality score by 5%
- Continue safety signage and operations improvements on roadways through better striping, signage and reflective materials raised pavement markers
- Enhance the walkability and safety for pedestrians via LCI Grant

Budget Summary

	2019 Actual	2021 Request
Total Personal Services & Benefits	\$1,709,079.00	\$1,885,906.00
Total Operating Expenses	\$658,887.00	\$1,707,783.00
Total Expenses	\$2,367,966.00	\$3,593,689.00