

Vision and Mission

ROCKDALE WATER RESOURCES'S (RWR) VISION AND MISSION STATEMENT

VISION

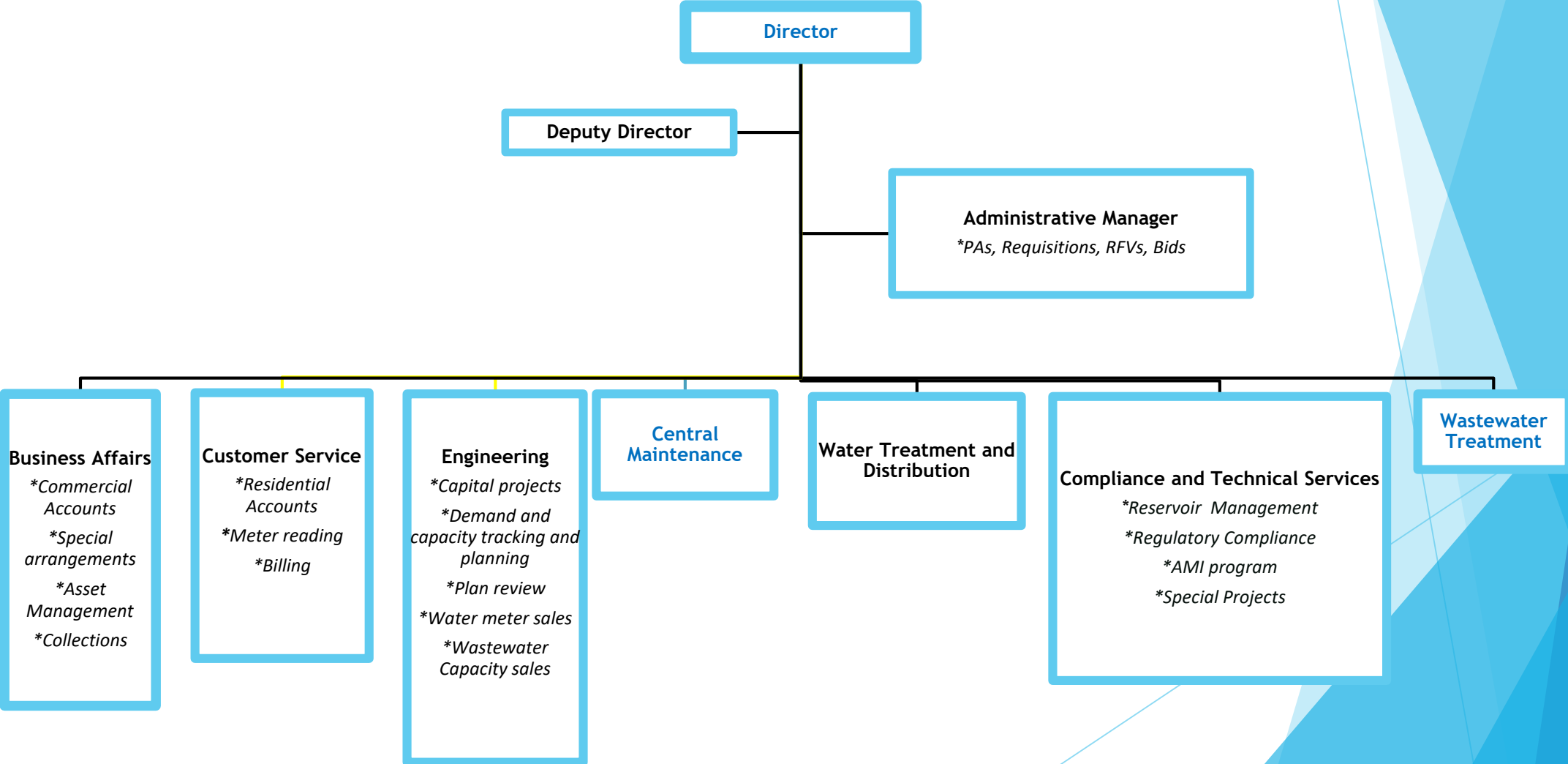
To be the premier water and sewer utility in the State of Georgia championing economic development & service delivery while embracing environmental stewardship in Rockdale County

MISSION STATEMENT

Perfectly Positioned to provide the ultimate natural resource....WATER.

Department Structure

Organizational Structure - 72 employees



Opportunities and Challenges

RWR's successes, Opportunities, and Challenges

Successes

- Reclaimed and acquired over a 1MG in the current systems wastewater treatment capacity
- Active construction of new 3 MG Snapping Shoals WWTP (70% complete)
- Improved operational performance and mediate market impacts of limited technical pool through strategic contracts
- Acquired an additional 4 MG of drinking water capacity through the construction of a second drinking water clearwell at the Gees Mill WTP.
- Purchase of RWR Customer Service Center building to consolidated customer business operations

Opportunities

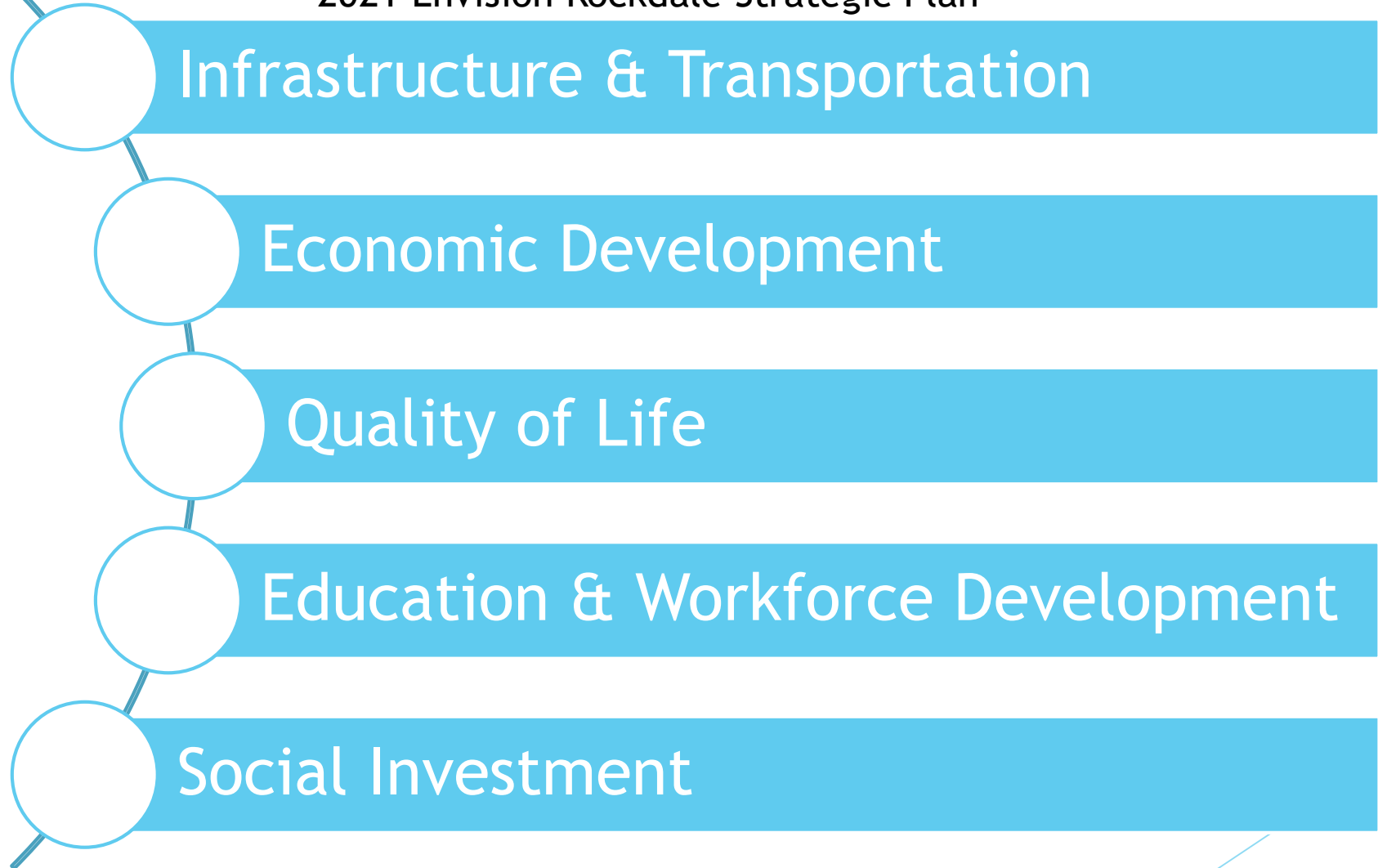
- Improve operational efficiencies and minimized the impacts of a shrinking utility operations talent pool through the use of technology (AMI...bka radio reading metering) and strategic public/private partnerships.
- Partnership with local technical college to fund an apprenticeship program for critical water and wastewater personnel (operators).

Challenges

- Very limited regional and national utility operations talent pool.
- Very competitive job market
- New regulations and unfunded mandates

Commissioners' Priorities - Envision Rockdale

2021 Envision Rockdale Strategic Plan



Commissioners' Priorities - Envision Rockdale

RWR's 2021 Envision Rockdale Strategic Plan

Infrastructure & Transportation

RWR

- Construction of new 3 million gallons per day Snapping Shoals Wastewater Treatment Plant to support Rockdale County growth
- Complete county-wide implementation of the Automated Metering Infrastructure (AMI) program to help facilitate operational efficiency and cost savings
- Consolidate Rockdale Water Resources administrative and customer operations into one location
- Design two regional lift stations to decommission South Side facilities to support economic development and reduce operational costs associated with old facilities that have existed beyond their planned life cycle

Budget Summary

	2019 Actual	2021 Request
Salaries & Benefits	\$4,319,620	\$4,520,039
Operating Expenses	\$28,335,208	\$29,134,931
Total	\$32,654,828	\$33,654,970