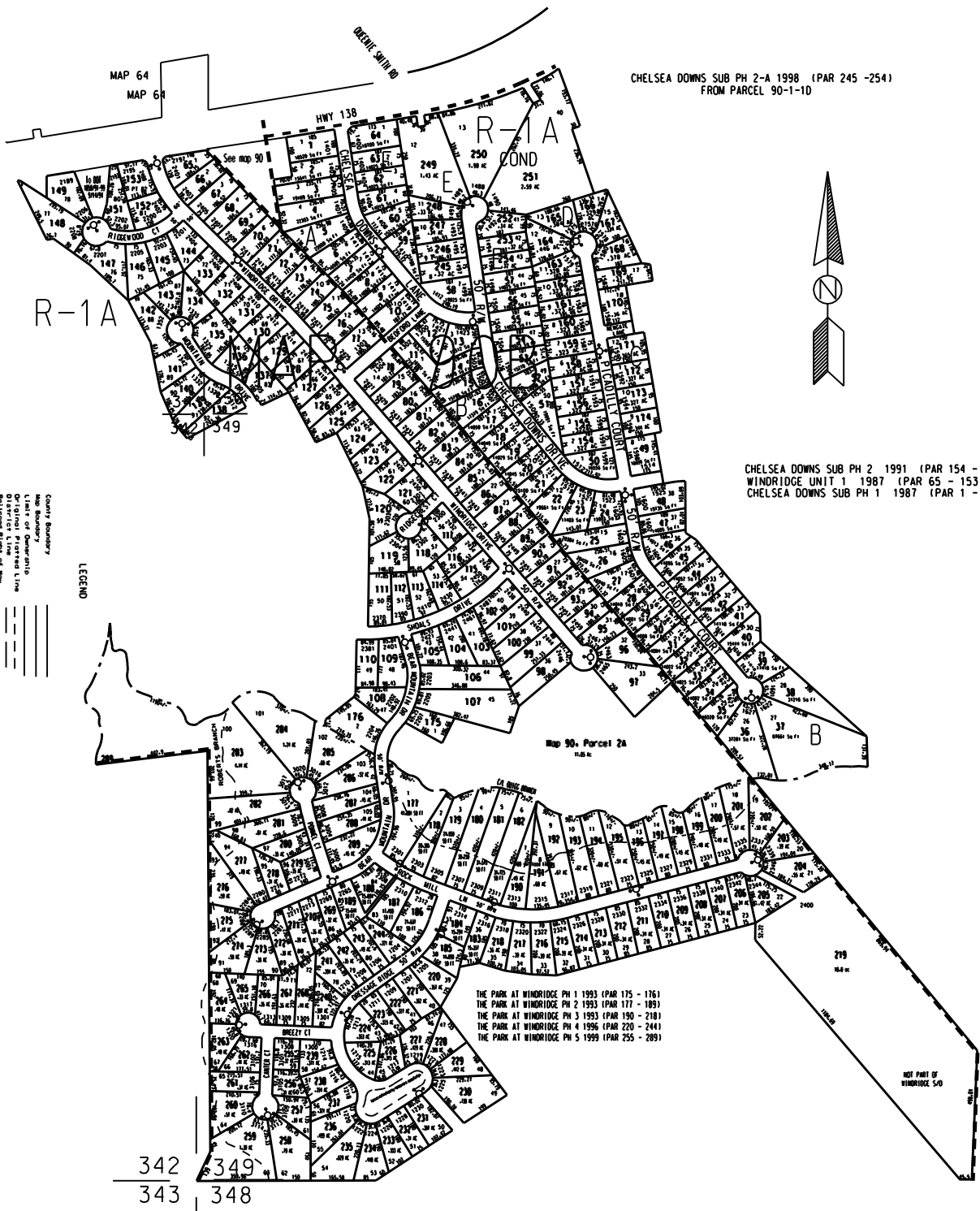


THIS MAP HAS BEEN COMPILED FROM THE MOST AUTHENTIC INFORMATION AVAILABLE, AND NEITHER ROCKDALE COUNTY NOR HUNNICUTT AND ASSOCIATES, INC. ASSUME RESPONSIBILITY FOR ERRORS OR OMISSIONS



CHELSEA DOWNS SUB PH 2-A 1998 (PAR 245 -254)
FROM PARCEL 90-1-1D

CHELSEA DOWNS SUB PH 2 1991 (PAR 154 - 174)
WINDRIDGE UNIT 1 1987 (PAR 65 - 153)
CHELSEA DOWNS SUB PH 1 1987 (PAR 1 - 64)

THE PARK AT WINDRIDGE PH 1 1993 (PAR 175 - 176)
THE PARK AT WINDRIDGE PH 2 1993 (PAR 177 - 185)
THE PARK AT WINDRIDGE PH 3 1993 (PAR 190 - 218)
THE PARK AT WINDRIDGE PH 4 1996 (PAR 220 - 244)
THE PARK AT WINDRIDGE PH 5 1999 (PAR 255 - 289)

NOT PART OF WINDRIDGE 50

342
343
349
348

- LEGEND
- County Boundary
 - Map Boundary
 - City of Lawrence
 - Original System Line
 - Revised System Line
 - City Limits
 - Streams
 - Church
 - School
 - Center

TAX VALUATION MAP
ROCKDALE COUNTY
GEORGIA
DATE: DEC. 11, 1997 (LAST REVISION) MAP NO. 91

