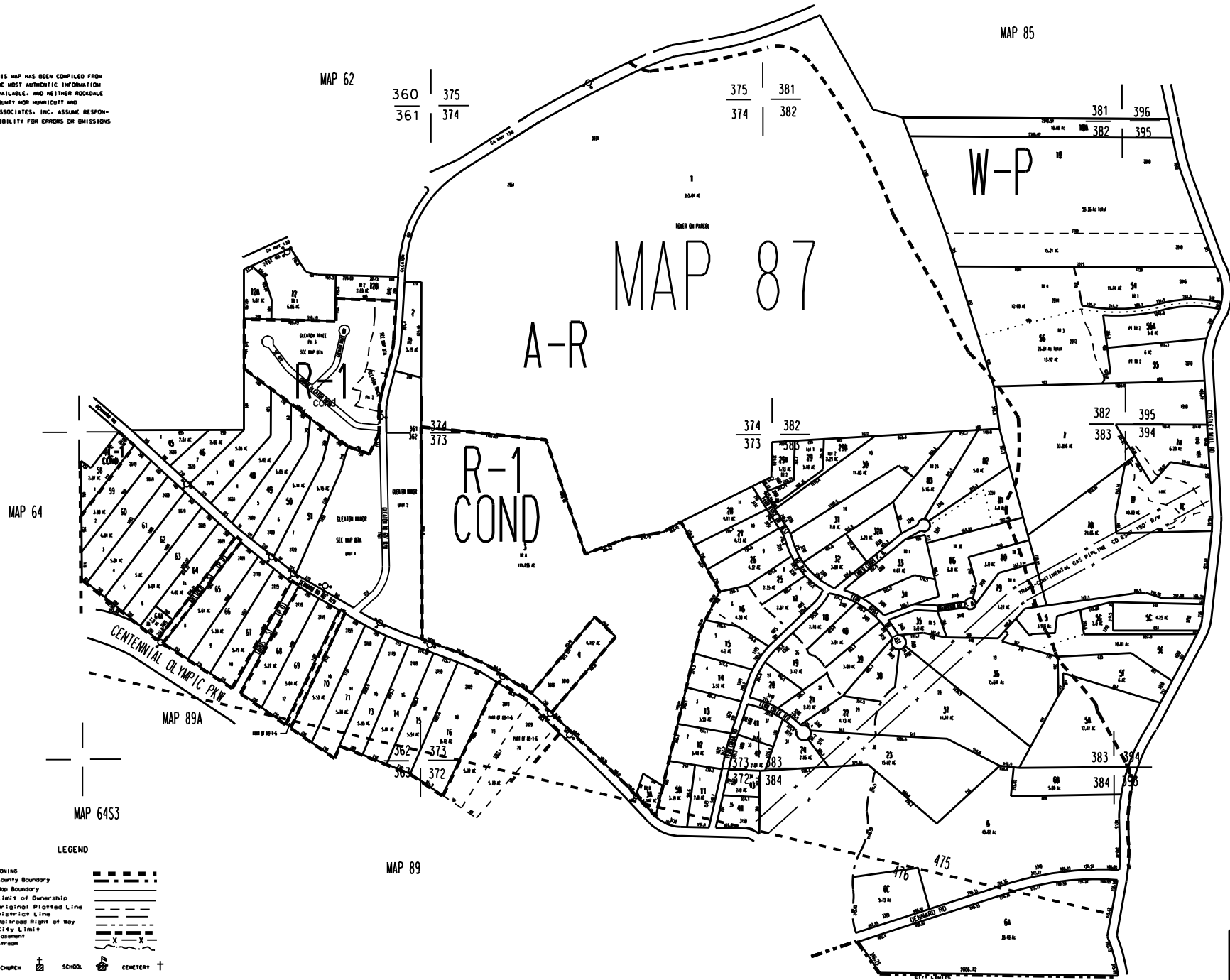


THIS MAP HAS BEEN COMPILED FROM THE MOST AUTHENTIC INFORMATION AVAILABLE, AND NEITHER ROCKDALE COUNTY NOR HUNNICUTT AND ASSOCIATES, INC. ASSUME RESPONSIBILITY FOR ERRORS OR OMISSIONS.



- NOTES:
- 87-1-29A OUT OF 87-1-29 FOR '99 PER DEED 1477/11 2-6-98
  - 87-1-72B OUT OF 87-1-72 FOR '99 PER DEED 1591/139 9-26-98 (LUS)
  - 87-1-95 rezoned from R-1 to R-1 cond. case # 2002/26 ordinance # 0-2002-08
  - 1.52 ac. to Cleburne from Pk. 2, plat book 3744
  - 87-1-92 from 87-1-90. deed # 2002/26/27/28/29
  - 87-1-93 combined with 87-1-90 by owner's request for 65
  - Cleburne from Pk. 3 from 87-1-90. plat 33/188-110 2001
  - 87-1-94 & 88 from 87-1-90. deed # 2002/24 & 2002/71 11/22/99
  - 87-1-98 from 87-1-90 with plat 33/48 2002

CROSS TRAILS ON THE RIVER 1988 (PAR 84, 84A, - 84E)  
 RIVERMOUNT ACRES U 3 1985 (PAR 73 - 78)  
 RIVERMOUNT ACRES U 2 1984 (PAR 65 - 71)  
 RIVERMOUNT ACRES U 1 1984 (PAR 58 - 64)  
 FERN CREEK S/D 1980

LEGEND

ZONING	County Boundary	-----
	Map Boundary	-----
	Limit of Ownership	-----
	Original Platted Line	-----
	District Line	-----
	Railroad Right of Way	-----
	City Limit	-----
	Comment	-----
	Stream	-----

CHURCH + SCHOOL CEMETERY +

TAX VALUATION MAP		LAND LOT	361-363	MAP NO.
ROCKDALE COUNTY		DISTRICT	15	87
GEORGIA		C.M.O.	25-16	
DATE DEC. 1, 1987	LAST REVISION 200	PHOTO NO. 883526/3		