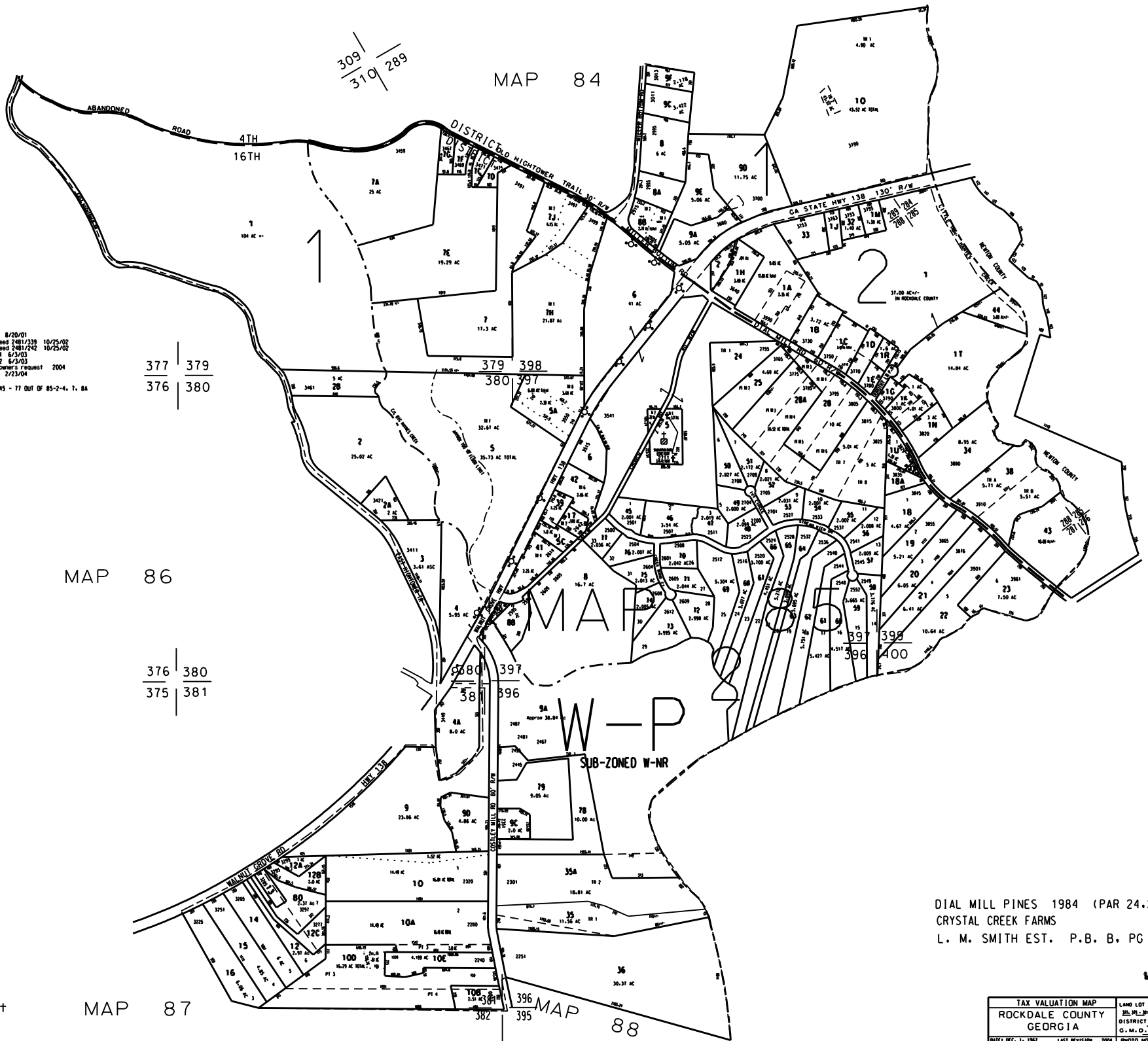


THIS MAP HAS BEEN COMPILED FROM THE MOST AUTHENTIC INFORMATION AVAILABLE, AND NEITHER ROCKDALE COUNTY NOR HUNNICUTT AND ASSOCIATES, INC. ASSUME RESPONSIBILITY FOR ERRORS OR OMISSIONS

309  
310 289

MAP 84



- NOTES:
- 85-2-1U from 85-2-1P deed 2101/26 8/20/01
  - 0.04 ac from 85-2-1W to 85-2-2 deed 2481/339 10/25/02
  - 0.04 ac from 85-2-2 to 85-2-2A deed 2481/342 10/25/02
  - 85-2-43 from 85-2-1 deed 3039/194 6/3/03
  - 85-2-44 from 85-1-1 deed 3039/192 6/3/03
  - 85-2-37 combined with 85-2-1A by owners request 2004
  - 85-2-90 from 85-2-9 deed 3070/16 2/23/04
  - 85-1-50 and 85-1-5C from 85-1-5
  - OAKS @ HATHES CREEK 2006 PARCELS 45 - 77 OUT OF 85-2-4, 7, 8A

377 | 379  
376 | 380

376 | 380  
375 | 381

MAP 86

MAP 87

- LEGEND
- County Boundary
  - Map Boundary
  - Limit of Deprivation
  - Original Plotted Line
  - District Line
  - Railroad Right of Way
  - City Limits
  - Easement
  - Stream
- CHURCH    SCHOOL    CEMETERY

DIAL MILL PINES 1984 (PAR 24,25, & 28)  
CRYSTAL CREEK FARMS  
L. M. SMITH EST. P.B. B, PG 185

TAX VALUATION MAP	LAND LOT 284 - 289 (400)	MAP NO.
ROCKDALE COUNTY	DISTRICT 4 & 16	85
GEORGIA	EX. M. O. 435	
DATE: DEC. 1, 1987	LAST REVISION: 2004	PHOTO NO. 85-152-118