

THIS MAP HAS BEEN COMPILED FROM THE MOST AUTHENTIC INFORMATION AVAILABLE AND NEITHER ROCKDALE COUNTY NOR HUNNICUTT AND ASSOCIATES, INC., ASSUME RESPONSIBILITY FOR ERRORS OR OMISSIONS

MAP 82

MAP 83

282 / 265
283 / 264

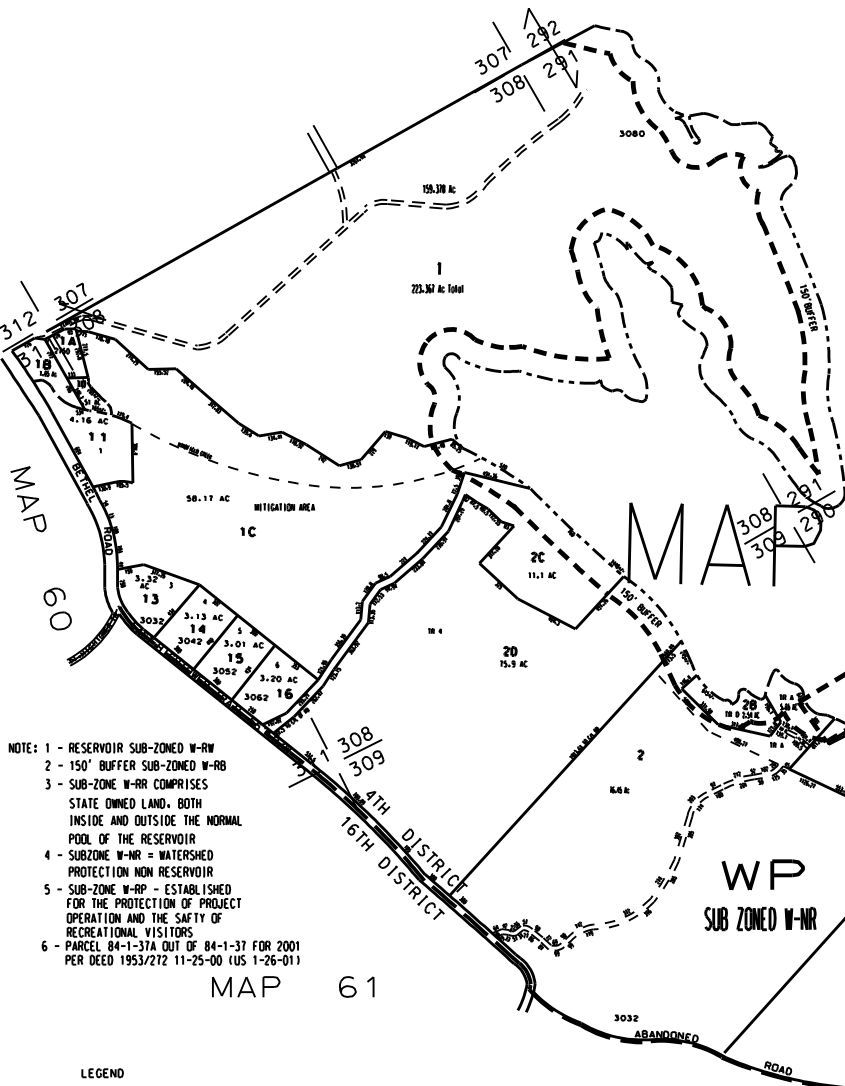
SUBZONED
W-RW

2A
653.65 AC
Randy Poynter Lake

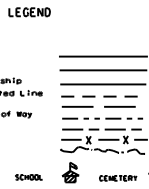
MAP 84

WP
SUB ZONED W-RR

NEWTON CO



- NOTE: 1 - RESERVOIR SUB-ZONED W-RW
 2 - 150' BUFFER SUB-ZONED W-RB
 3 - SUB-ZONE W-RR COMPRISES STATE OWNED LAND, BOTH INSIDE AND OUTSIDE THE NORMAL POOL OF THE RESERVOIR
 4 - SUBZONE W-RR = WATERSHED PROTECTION NON RESERVOIR
 5 - SUB-ZONE W-RP - ESTABLISHED FOR THE PROTECTION OF PROJECT OPERATION AND THE SAFETY OF RECREATIONAL VISITORS
 6 - PARCEL 84-1-37A OUT OF 84-1-37 FOR 2001 PER DEED 1953/212 11-25-00 (US 1-26-01)



WINDWARD CHASE S/D 1997 (PAR 37 - 64)
 HAYNES RIDGE SECTION 2, 1985 (PAR 20 -34)
 HAYNES RIDGE SECTION 1, 1985 (PAR 18, 19, 35, 36)
 WINFIELD SUB. U 1, 1984 PAR 11 - 16)

MAP 85

WELLINGTON CREEK ESTATES 2002 (PAR 10A, 10D, 65 - 79)
 FROM PARCELS 84-1-10A & 84-1-10D
 lots 15 & 16 revised with plat 31/66 & 31/67
 WELLINGTON LAKE S/D 2005 (PAR 80-0104)
 FROM PARCELS 84-1-3, 30 & 32

TAX VALUATION MAP	LAND LOT 309 - 312	MAP NO.
ROCKDALE COUNTY	288-291, 283, 284, 284	84
GEORGIA	DISTRICT 4	
	O. M. O. 415	
DATE: DEC. 1, 1987	LAST REVISION: 2004	PHOTO NO. 852 136