

THIS MAP HAS BEEN COMPILED FROM THE MOST AUTHENTIC INFORMATION AVAILABLE, AND NEITHER ROCKDALE COUNTY NOR MUNICIPALITY AND ASSOCIATES, INC., ASSUME RESPONSIBILITY FOR ERRORS OR OMISSIONS

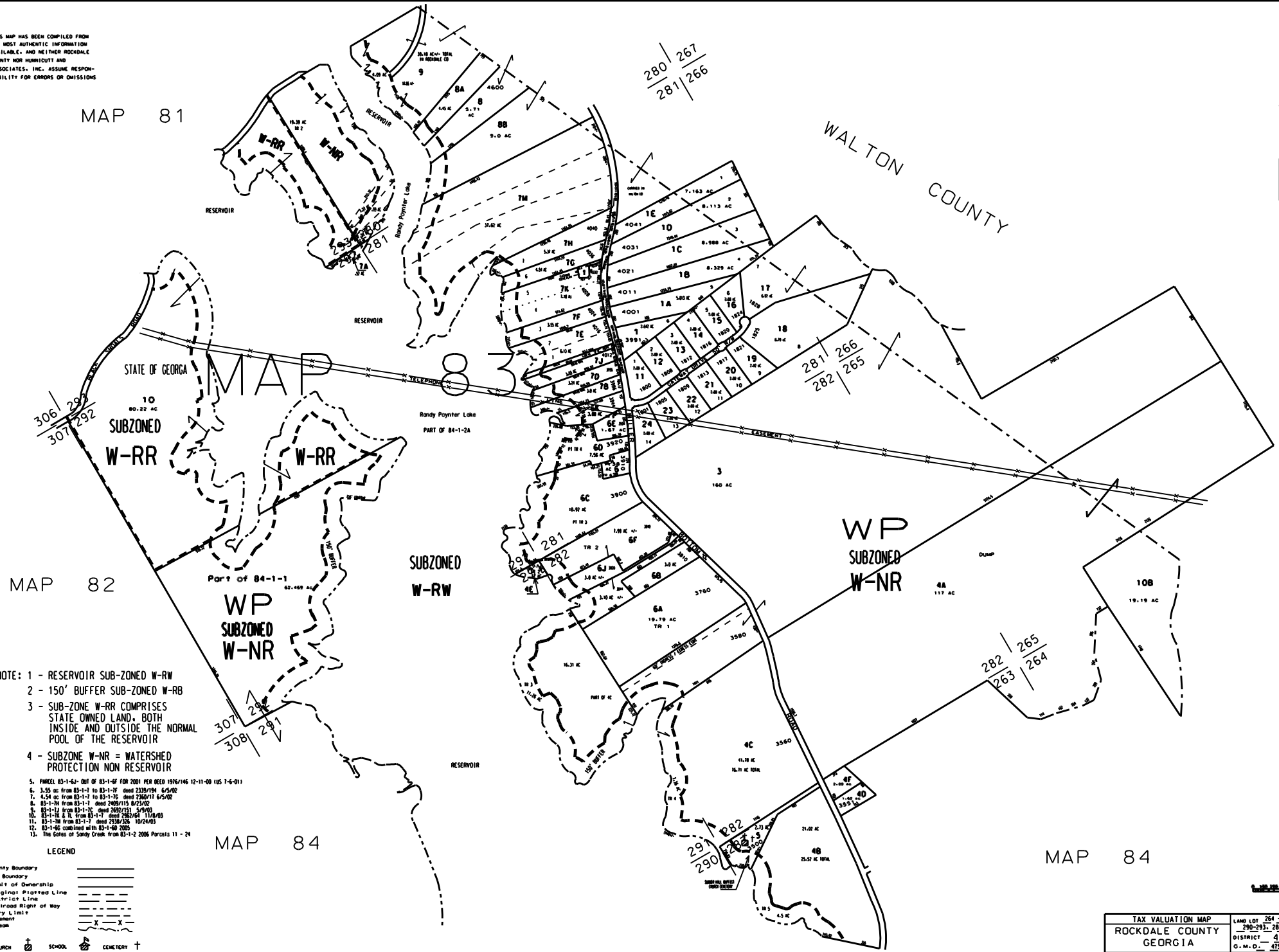


MAP 81

MAP 82

MAP 84

WALTON COUNTY



- NOTE: 1 - RESERVOIR SUB-ZONED W-RW
 2 - 150' BUFFER SUB-ZONED W-RB
 3 - SUB-ZONE W-RR COMPRISES STATE OWNED LAND, BOTH INSIDE AND OUTSIDE THE NORMAL POOL OF THE RESERVOIR
 4 - SUBZONE W-NR = WATERSHED PROTECTION NON RESERVOIR

5. PARCEL 83-1-6-1 OUT OF 83-1-6-1 FOR 2001 PER DEED 1936/146 12-11-00 (US 7-6-01)
 6. 3.55 ac from 83-1-1 to 83-1-17 deed 2329/156 6/25/02
 7. 4.54 ac from 83-1-1 to 83-1-16 deed 2300/11 6/24/02
 8. 83-1-16 from 83-1-1 deed 2409/115 8/23/02
 9. 83-1-12 from 83-1-17 deed 2609/151 5/4/03
 10. 83-1-16 & 17 from 83-1-17 deed 2609/151 5/4/03
 11. 83-1-16 from 83-1-17 deed 2338/226 10/24/03
 12. 83-1-16 combined with 83-1-16 2005
 13. The Gates of Sandy Creek from 83-1-2 2006 Parcels 11 - 24

LEGEND

- County Boundary
- Map Boundary
- Limit of Ownership
- Original Platted Line
- District Line
- Railroad Right of Way
- City Limit
- Easement
- Stream

TAX VALUATION MAP	LAND LOT 264 - 266	MAP NO.
ROCKDALE COUNTY	290-293, 280-283	83
GEORGIA	DISTRICT 4	
	C. M. D. 475	
DATE: DEC. 1, 1987	LIST REVISION: 2004	PHOTO NO.: 150