

THIS MAP HAS BEEN COMPILED FROM THE MOST AUTHENTIC INFORMATION AVAILABLE, AND NEITHER ROCKDALE COUNTY NOR HUMPHREY AND ASSOCIATES, INC. ASSUME RESPONSIBILITY FOR ERRORS OR OMISSIONS

MAP 81

NOTES:

1. ADDITIONAL LAND (0.1789AC) FROM 82-3-1A TO 82-3-1 FOR 2002 PER DEED 1970/318 1-31-01 (US 7-6-01)
2. 2.00 AC AND HOUSE FROM 82-1-12 TO 82-1-12C W/ED 2113/86 9/5/82
3. 0.10 ac from 82-3-8P TO ROCKDALE CO FOR RELIATION OF YEARS IN DEED 2162/94 FOR CO. CIVIL ACTION # 2001-CV-2501 I
4. 81-1-11B & 82-1-11C from 82-1-11 deeded 2117/25 & 39 9/3/82
5. 82-1-8B from 82-3-1B by plat 3174 for 2002
6. 82-3-2B from 82-3-2B by plat 3174 for 2002
7. 0.15 ac from 82-3-8E to Rockdale Co Deed 2044/168 6/11/83
8. 1.13 ac from 82-3-8E to Rockdale Co Deed 2044/175 5/20/83
9. 0.38 ac to 82-3-8P from Rockdale Co Deed 2044/168 5/20/83
10. 82-3-8B from county right of way. Deed 3191/238 8/18/04

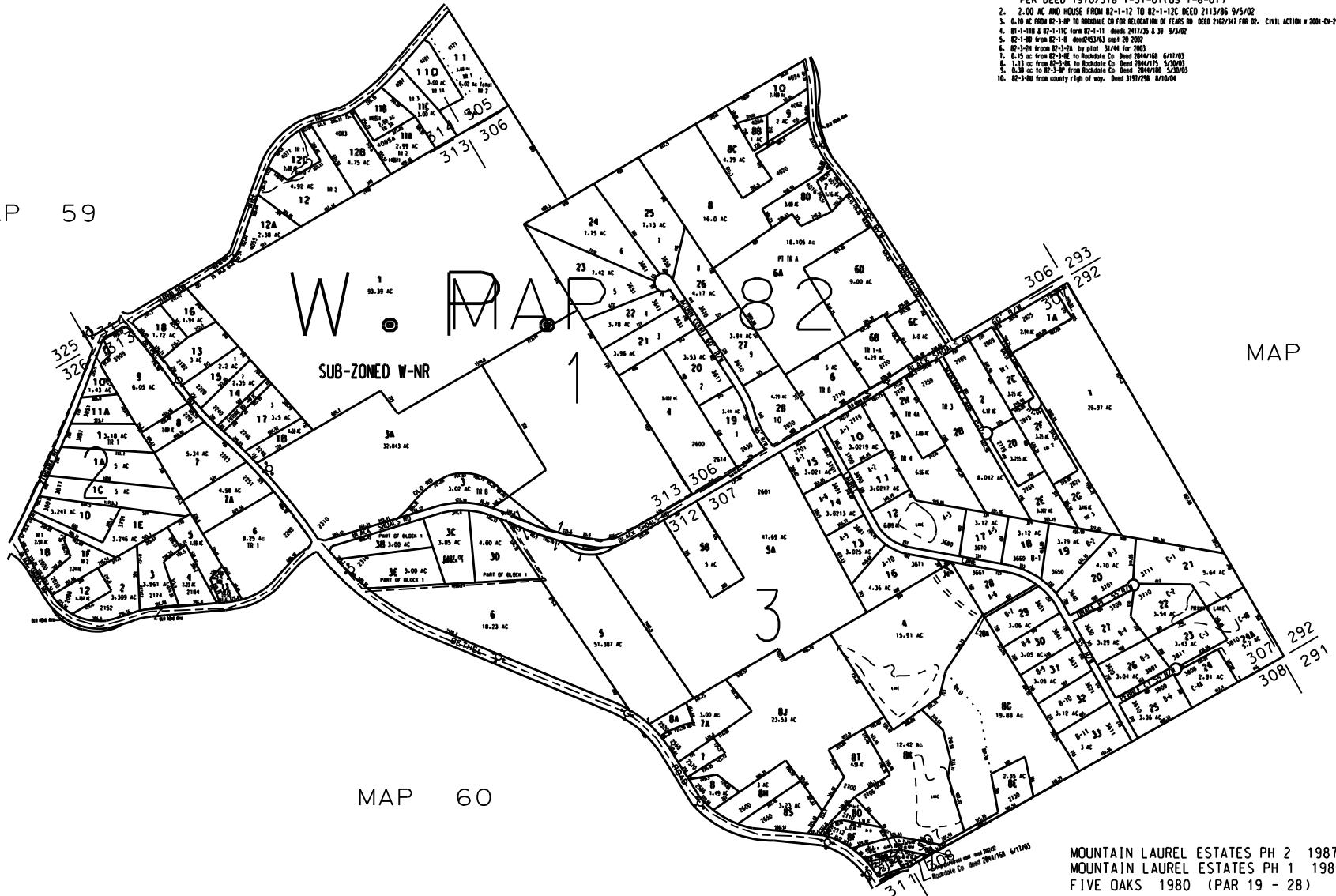


MAP 59

MAP 53

MAP 83

MAP 60



LEGEND

- County Boundary
- Map Boundary
- Limit of Ownership
- Original Platted Line
- District Line
- Railroad Right of Way
- City Limit
- Easement
- Stream
- Church
- School
- Cemetery

MOUNTAIN LAUREL ESTATES PH 2 1987 (PAR 16 - 28)  
MOUNTAIN LAUREL ESTATES PH 1 1985 (PAR 10 - 15)  
FIVE OAKS 1980 (PAR 19 - 28)

TAX VALUATION MAP		LAND LOT	MAP NO.
ROCKDALE COUNTY		305 - 307	82
GEORGIA		312 - 314, 326	
		DISTRICT 4	
		C. M. C. 475	

DATE: DEC. 1, 1987 LAST REVISION: 2004 PHOTO NO. 652 136 1" = 400'