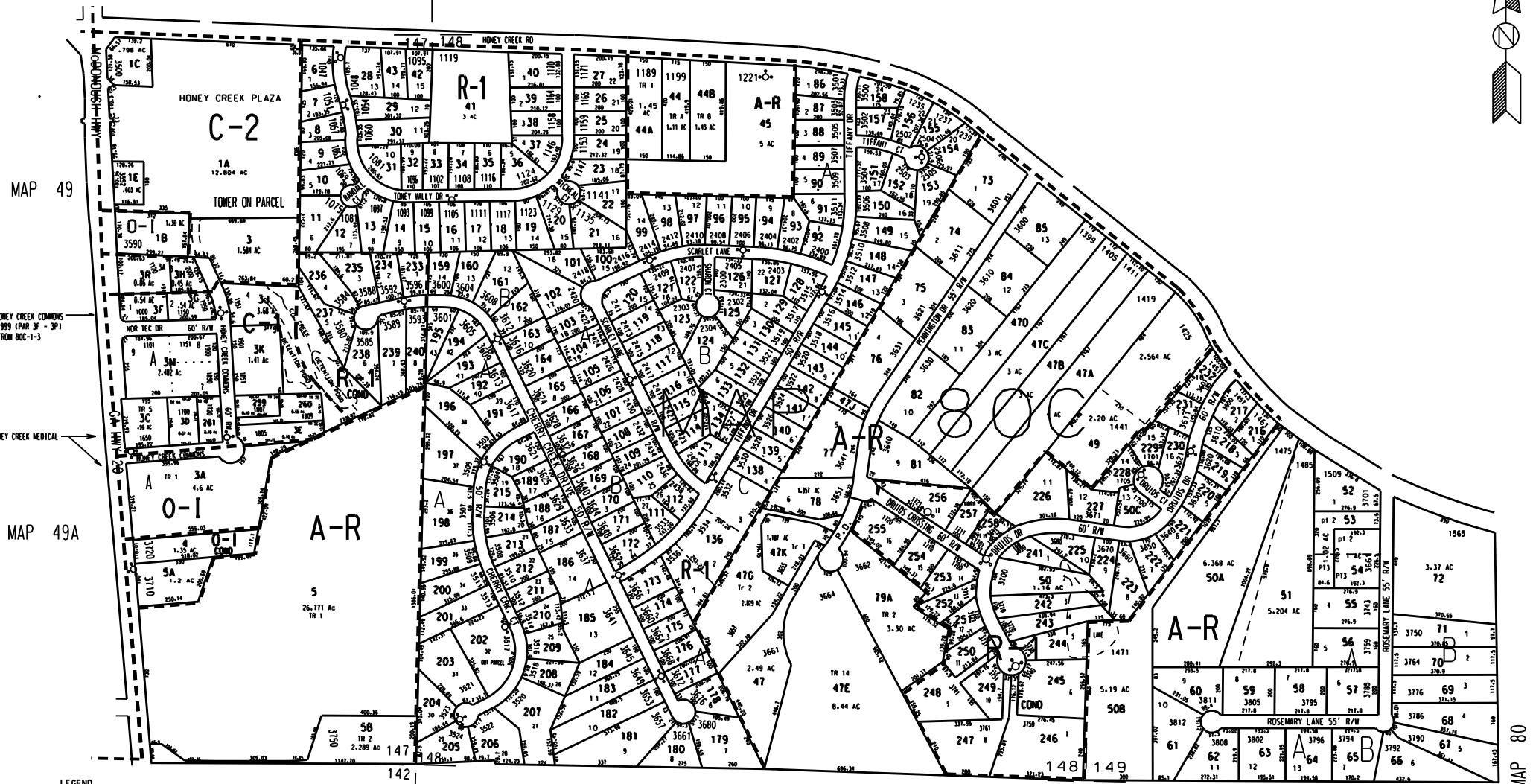


THIS MAP HAS BEEN COMPILED FROM THE MOST AUTHENTIC INFORMATION AVAILABLE, AND NEITHER ROCKDALE COUNTY NOR HEMPHILTY AND ASSOCIATES, INC., ASSUME RESPONSIBILITY FOR ERRORS OR OMISSIONS.

Note:  
1. 80C-1-47K from 80C-1-47C deed 3300/120 12/1/04

MAP 79



- LEGEND
- County Boundary
  - Map Boundary
  - Limit of Ownership
  - Original Platted Line
  - District Line
  - Railroad Right of Way
  - City Limit
  - Stream
  - Church
  - School
  - Cemetery

MAP 80

CHERRY CREEK U 2 1990 PAR 196 THRU 215  
CHERRY CREEK SUB. 1989 PAR. 80C-1-159 THRU 195

MAP 80B

141 | 140  
 DRUIDS KEEP U 1 1991 (PAR 50C, 216 - 232)  
 DRUIDS KEEP U 2 1992 (PAR 50, 241 - 258)  
 CHERRY CREEK UNIT 3 1991 (PAR 216 - 223)  
 DRUIDS KEEP 1991 (PAR 50C, 216 - 232)  
 STONEY BROOK 1987 (PAR 86 - 158)  
 CRYSTAL SPRINGS S/D 1974 (52 - 72)  
 TONEY VALLEY S/D 1973 (PAR 6 - 43)

MAP 80

0 100 200 300 400  
 Feet

| TAX VALUATION MAP |                    | LAND LOT 147 - 149 | MAP NO.   |
|-------------------|--------------------|--------------------|-----------|
| ROCKDALE COUNTY   |                    | DISTRICT           | 10        |
| GEORGIA           |                    | C. M. D.           | 80C       |
| DATE REC. 1, 1987 | LIST REVISION 2004 | PHOTO NO.          | 1" = 200' |