

THIS MAP HAS BEEN COMPILED FROM THE MOST AUTHENTIC INFORMATION AVAILABLE, AND NEITHER ROCKDALE COUNTY NOR HUNNICUTT AND ASSOCIATES, INC., ASSUME RESPONSIBILITY FOR ERRORS OR OMISSIONS.

MAP 80

MAP 80B

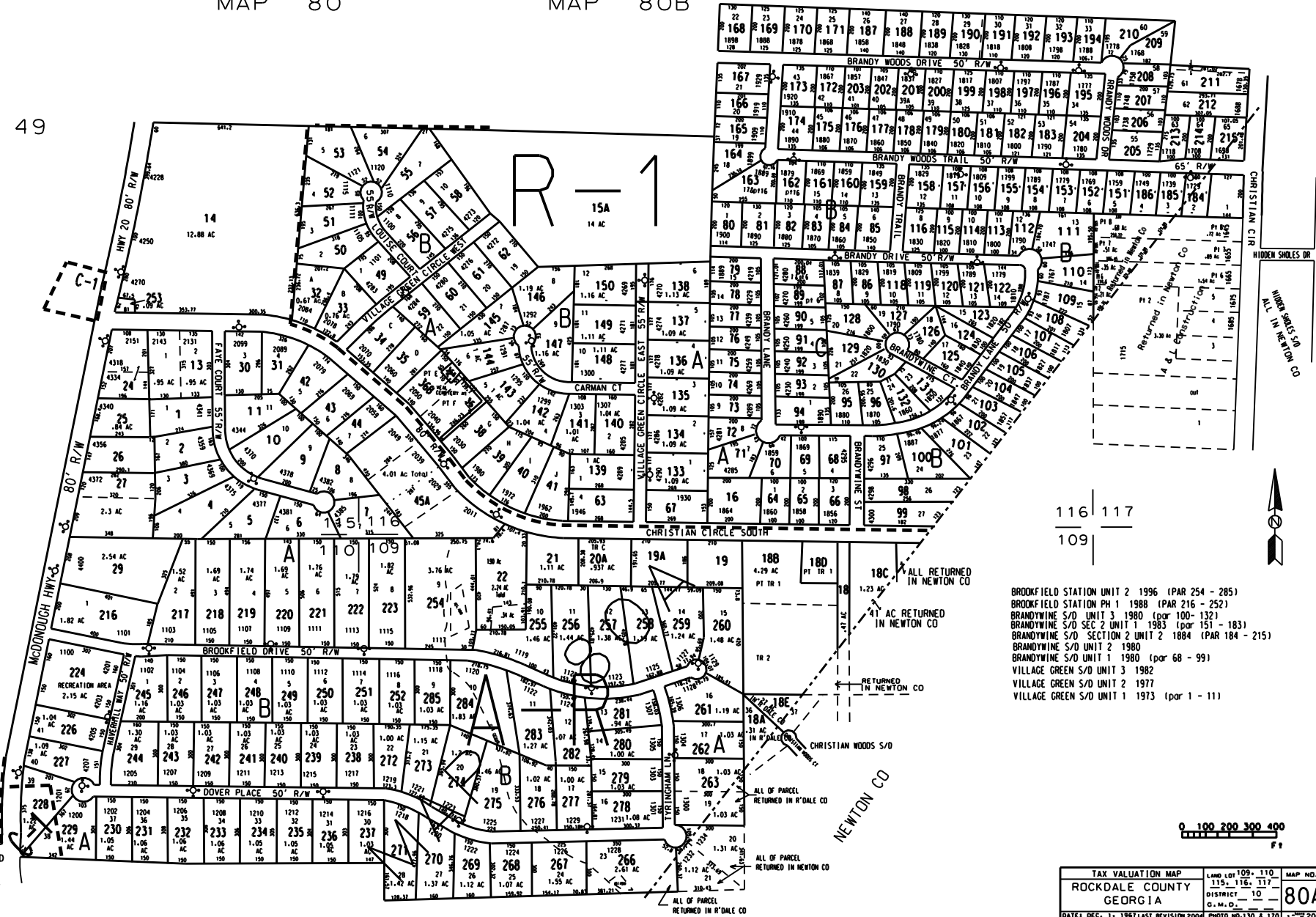
MAP 49

Note
1. 0.002 ac from 80A-1-228 to Rd deed 2885/328 7/13/03

LEGEND

- County Boundary
- Map Boundary
- Limit of Ownership
- Original Platted Line
- Disturbance Line
- Railroad Right of Way
- City Limit
- Easement
- Stream
- CHURCH
- SCHOOL
- CEMETERY

MAP 50



- BROOKFIELD STATION UNIT 2 1996 (PAR 254 - 285)
- BROOKFIELD STATION PH 1 1988 (PAR 216 - 252)
- BRANDYWINE S/D UNIT 3 1980 (par 100 - 132)
- BRANDYWINE S/D SEC 2 UNIT 1 1983 (par 151 - 183)
- BRANDYWINE S/D SECTION 2 UNIT 2 1884 (PAR 184 - 215)
- BRANDYWINE S/D UNIT 2 1980
- BRANDYWINE S/D UNIT 1 1980 (par 68 - 99)
- VILLAGE GREEN S/D UNIT 2 1977
- VILLAGE GREEN S/D UNIT 1 1973 (par 1 - 11)

TAX VALUATION MAP		LAND LOT	MAP NO.
ROCKDALE COUNTY		109, 110, 111, 117	80A
GEORGIA		DISTRICT 10	
DATE: DEC. 1, 1987		LAST REVISION: 2004	PHOTO MAP: 130 & 170