

MAP 77

MAP 77

MAP 79



MAP 93

NOTES:

1. PARCEL 79B-1-69A OUT OF 79B-1-69 FOR 2002 PER DEED 2007/103 4-9-01 (US 7-11-01)
2. .08 ac from 79B-1-2 to rd deed 2396/241 6/24/02
3. McCalla Crossing from 79B-1-1 2006 Parcels 295 - 313

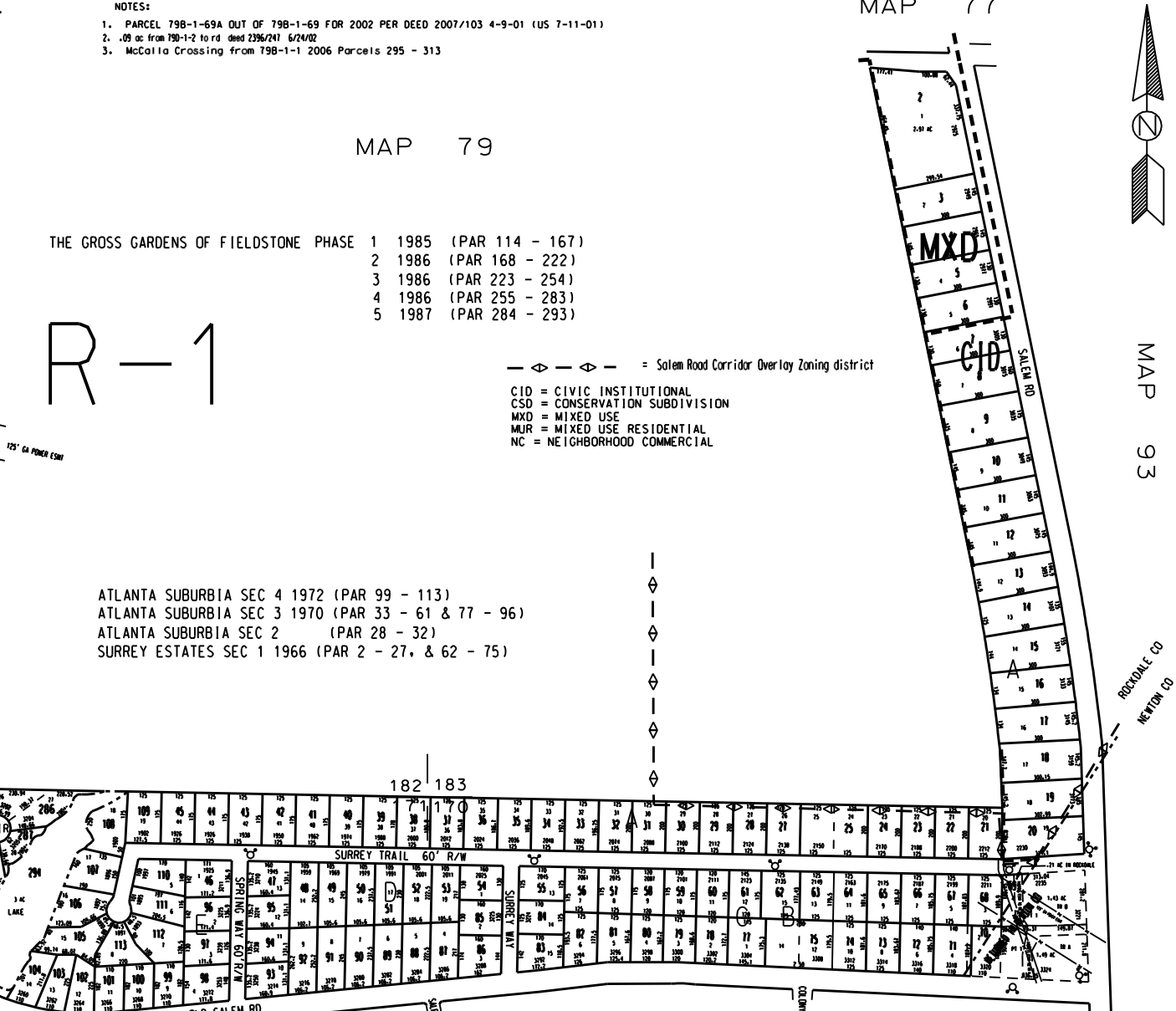
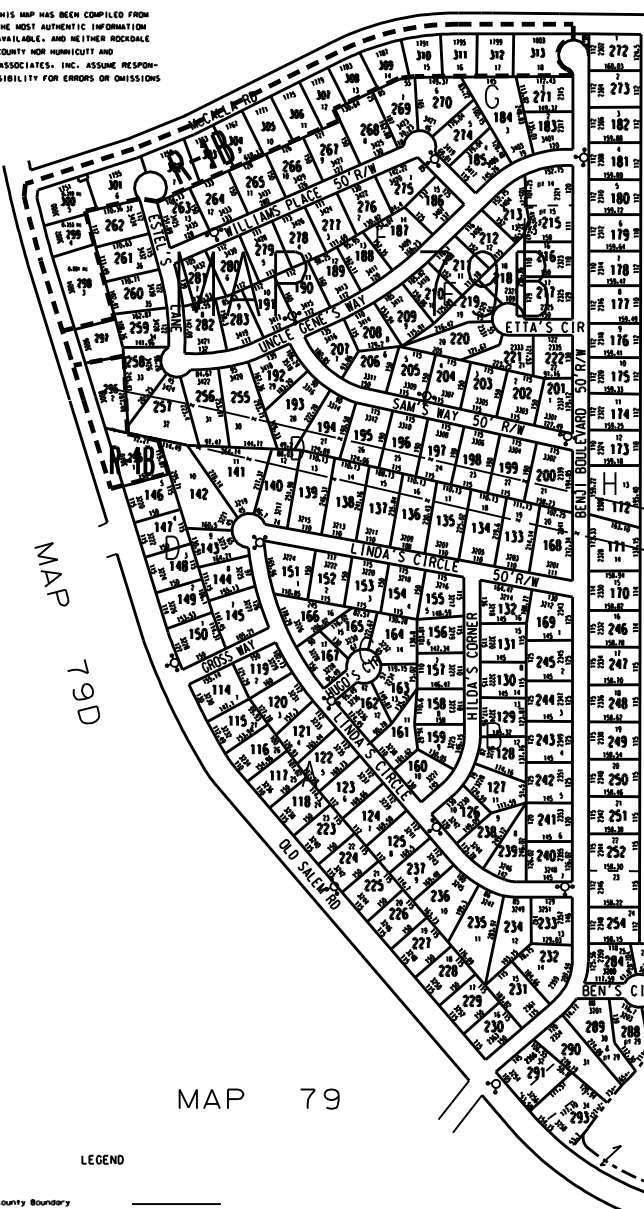
- THE GROSS GARDENS OF FIELDSTONE PHASE
- 1 1985 (PAR 114 - 167)
 - 2 1986 (PAR 168 - 222)
 - 3 1986 (PAR 223 - 254)
 - 4 1986 (PAR 255 - 283)
 - 5 1987 (PAR 284 - 293)

R-1

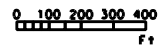
— ◊ — ◊ — = Salem Road Corridor Overlay Zoning district

CID = CIVIC INSTITUTIONAL
 CSD = CONSERVATION SUBDIVISION
 MXD = MIXED USE
 MJR = MIXED USE RESIDENTIAL
 NC = NEIGHBORHOOD COMMERCIAL

- ATLANTA SUBURBIA SEC 4 1972 (PAR 99 - 113)
 ATLANTA SUBURBIA SEC 3 1970 (PAR 33 - 61 & 77 - 96)
 ATLANTA SUBURBIA SEC 2 (PAR 28 - 32)
 SURREY ESTATES SEC 1 1966 (PAR 2 - 27, & 62 - 75)



- LEGEND
- County Boundary
 - Map Boundary
 - Limit of Ownership
 - Original Platted Line
 - District Line
 - Right-of-Way
 - City Limit
 - Assessment
 - Stream
 - CHURCH
 - SCHOOL
 - CENETARY



TAX VALUATION MAP	LAND LOT 170-171	MAP NO.
ROCKDALE COUNTY	182-183	79B
GEORGIA	DISTRICT 10	
	G.M.O. 276	
DATE: 11-1987	LAST REVISION: 2004	PHOTO NO. 128