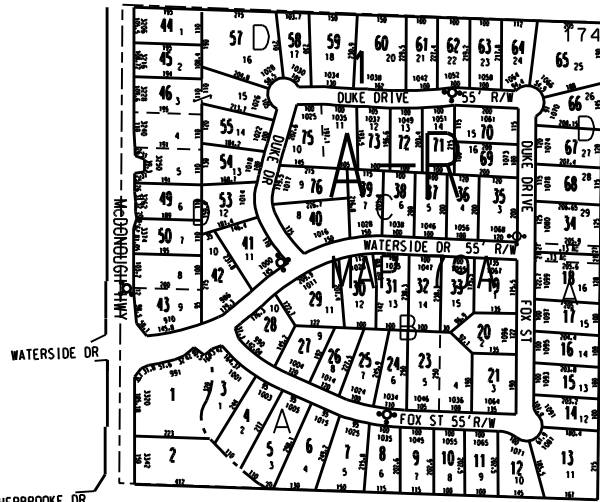


THIS MAP HAS BEEN COMPILED FROM THE MOST AUTHENTIC INFORMATION AVAILABLE, AND NEITHER ROCKDALE COUNTY NOR MUNICIPALITY AND ASSOCIATES, INC. ASSUME RESPONSIBILITY FOR ERRORS OR OMISSIONS



MAP 78 SHEET 1



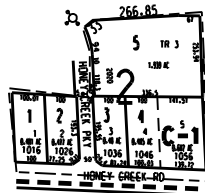
NOTE
1. 0.13 ac from 79A-1-34 to 79A1-18 deed 3079/35 4/22/04

MAP 78 SHEET 2

BLOCK 1
FOXWOOD HILLS SEC 1 1970 (PAR 3 - 27 & 43)
FOXWOOD HILLS SEC 2 1970 (PAR 28 - 42)
FOXWOOD HILLS SEC 3 1971 (PAR 44 - 76)
PARCELS 79A-1-1 AND 79A-1-2 ARE NOT PART OF FOXWOOD HILLS S/D

LEGEND

- County Boundary
- Map Boundary
- Limit of Ownership
- Original Platted Line
- District Line
- Roadway Right of Way
- City Limit
- Easement
- Stream
- Church
- School
- Cemetery



BLOCK 2

0 100 200 300 400
Ft

TAX VALUATION MAP	LAND LOT	174	MAP NO
ROCKDALE COUNTY GEORGIA	DISTRICT	10	79A
DATE: DEC. 1, 1987 (LAST REVISION 2004)	PHOTO NO.		