

THIS MAP HAS BEEN COMPILED FROM THE MOST AUTHENTIC INFORMATION AVAILABLE, AND NEITHER ROCKDALE COUNTY NOR HUNNICUTT AND ASSOCIATES, INC. ASSUME RESPONSIBILITY FOR ERRORS OR OMISSIONS



MAP 78 SHEET 1

PINWOOD SHORES UNIT 2
CONTINUED ON MAP 78 SHEET 1

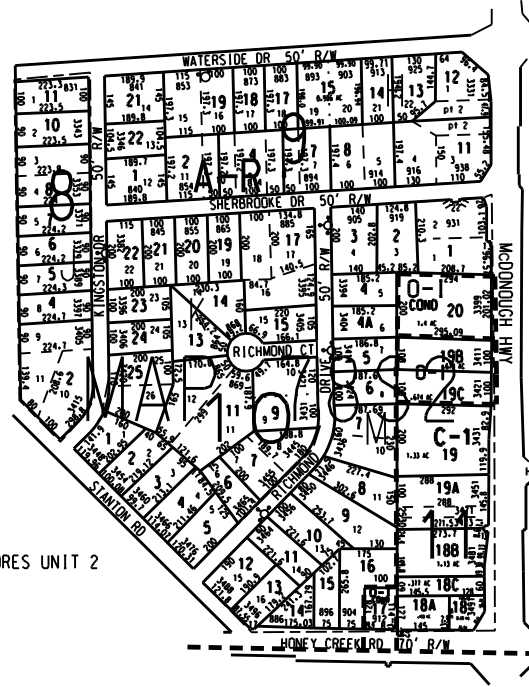
MAP 48

MAP 79A

MAP 79

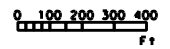
MAP 49

PINWOOD SHORES UNIT 2



LEGEND

- County Boundary
 - Map Boundary
 - Limit of Ownership
 - Original Platted Line
 - District Line
 - Notional Right of Way
 - City Limit
 - Easement
 - Stream
- CHURCH SCHOOL CEMETERY



TAX VALUATION MAP	LAND LOT	174	MAP NO.
ROCKDALE COUNTY	DISTRICT	10	78
GEORGIA	S. M. D.	561	SHEET 2
DATE REC. 1, 1981	LAST REVISION	2004	PHOTO NO. 052 112