

THIS MAP HAS BEEN COMPILED FROM THE MOST AUTHENTIC INFORMATION AVAILABLE, AND NEITHER ROCKDALE COUNTY NOR HURRICUTT AND ASSOCIATES, INC. ASSUME RESPONSIBILITY FOR ERRORS OR OMISSIONS

MAP 47C

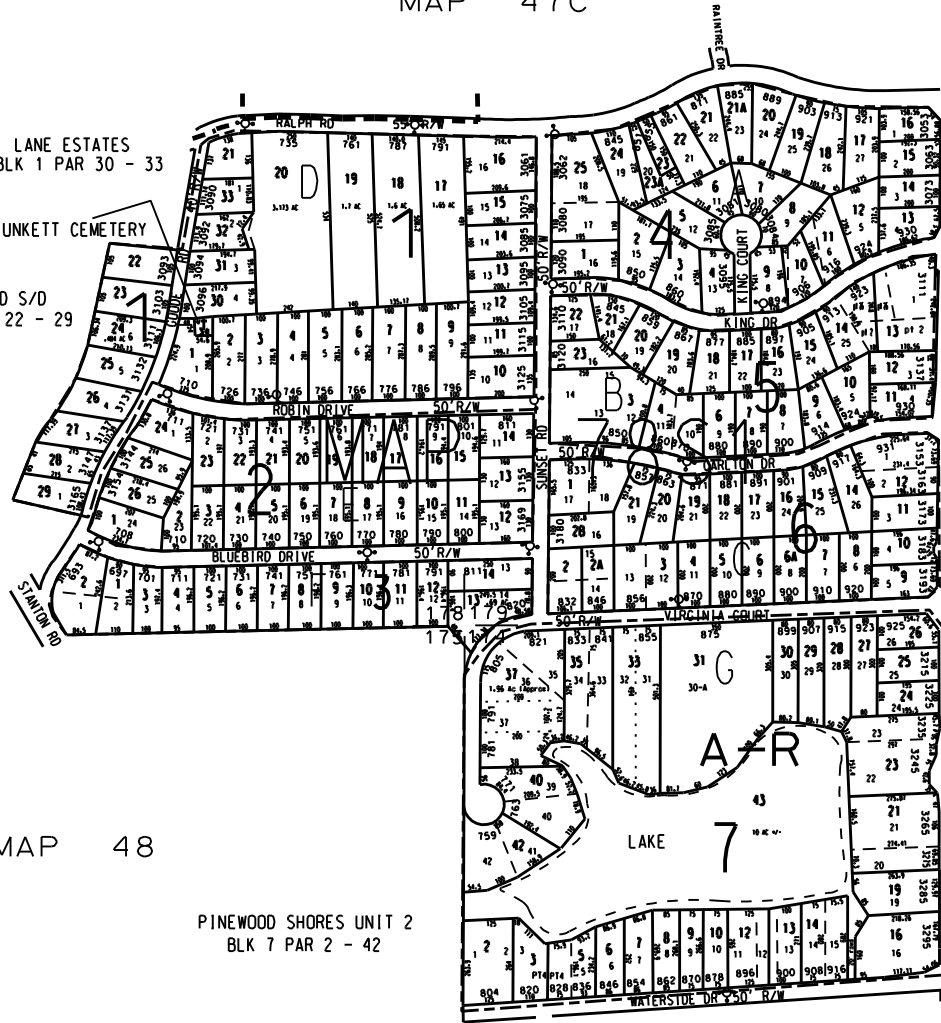
MAP 47

MAP 79

LANE ESTATES  
BLK 1 PAR 30 - 33

PLUNKETT CEMETERY

GOODE RD S/D  
BLK 1 PAR 22 - 29



NOTES:  
1. PARCEL 78-7-20 COMBINED WITH 78-7-21 FOR 2001 PER OWNER'S REQUEST AT BDE HEARING BY ELS (11-9-01 US)  
2. 78-6-13 combined with 78-6-12 by owners request for 03

MAP 48

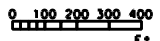
PINWOOD SHORES UNIT 1  
BLK 7 PAR 23 - 42

MAP 79A

PINWOOD SHORES UNIT 2  
BLK 7 PAR 2 - 42

PINWOOD SHORES UNITS 1 & 2  
PLAT BK C PG 17, 33, 76, 77

PINWOOD SHORES UNIT 2  
CONTINUED ON MAP 78S2



LEGEND

- County Boundary
- Map Boundary
- Limit of Ownership
- Original Platted Line
- District Line
- Railroad Right of Way
- City Limit
- Easement
- Stream
- CHURCH
- SCHOOL
- CEMETERY

MAP 78 SHEET 2

TAX VALUATION MAP	LAND LOT	174 - 175	MAP NO.	78
ROCKDALE COUNTY	DISTRICT	10	SHEET	1
GEORGIA	O. M. O.	361		
DATE: DEC. 1, 1987 LAST REVISION 2002 PHOTO NO. 856 172 173 174 175				