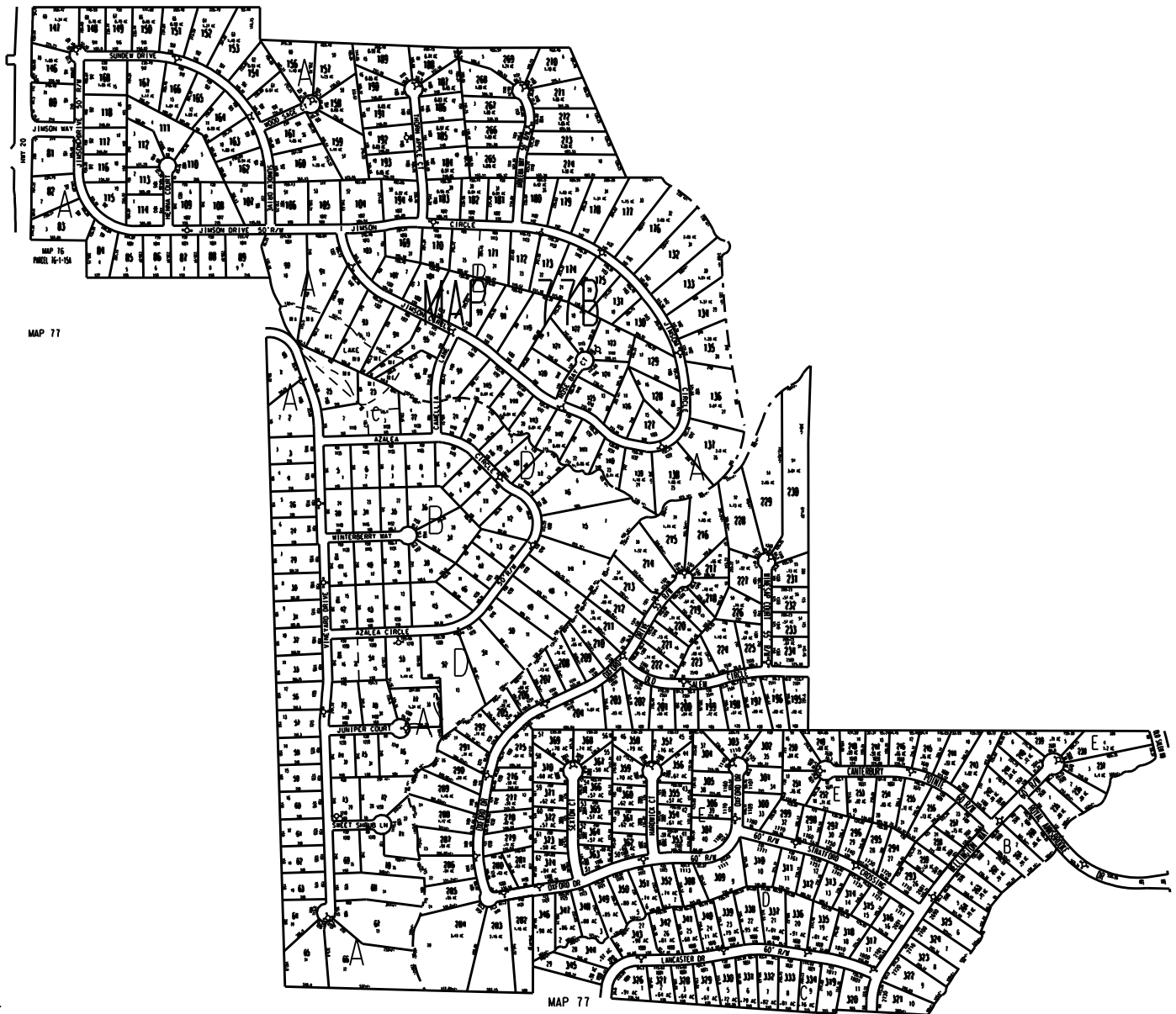


THIS MAP HAS BEEN COMPILED FROM THE MOST AUTHENTIC INFORMATION AVAILABLE, AND NEITHER ROCKDALE COUNTY NOR HUNNICUTT AND ASSOCIATES, INC. ASSUME RESPONSIBILITY FOR ERRORS OR OMISSIONS.

MAP 76

MAP 46

MAP 77



- LEGEND
- County Boundary
 - Map Boundary
 - Line of Ownership
 - Original Platted Line
 - District Line
 - Right of Way
 - City Limit
 - Easement
 - Stream
 - CHURCH
 - SCHOOL
 - CEMETERY

- IRWIN PLACE UNIT 1 1983 (PAR 1 - 25)
- 2 1984 (PAR 26 - 28)
- 3 1985 (PAR 29 - 55)
- 4 1985 (PAR 56 - 79)
- 5 1986 (PAR 80 - 118)
- 6 1987 (PAR 119 - 145)
- 7 1987 (PAR 146 - 168)
- 8 1988 (PAR 169 - 194)
- EAST IRWIN PLACE 1992 (PAR 195 - 234)
- EAST IRWIN PLACE U 2 1993 (PAR 275 - 292)
- ANNSBROOKE UNIT 1 1992 (PAR 235 - 264)
- WILSON PLACE 1992 (PAR 265 - 274)
- ANNSBROOKE UNIT 2 1993 (PAR 293 - 325)
- ANNSBROOKE UNIT 3 1995 (PAR 326 - 345)
- ANNSBROOKE UNIT 4 1997 (PAR 363 - 374)

Scale: 1" = 300'

TAX VALUATION MAP		LAND LOT	211-212	MAP NO.
ROCKDALE COUNTY		DISTRICT	10	77B
GEORGIA		DATE: DEC. 1, 1987	LAST REVISION: 2001	PHOTO: 1978-80