

THIS MAP HAS BEEN COMPILED FROM THE MOST AUTHENTIC INFORMATION AVAILABLE, AND NEITHER ROCKDALE COUNTY NOR HERRICK/CLINT AND ASSOCIATES, INC. ASSUME RESPONSIBILITY FOR ERRORS OR OMISSIONS.



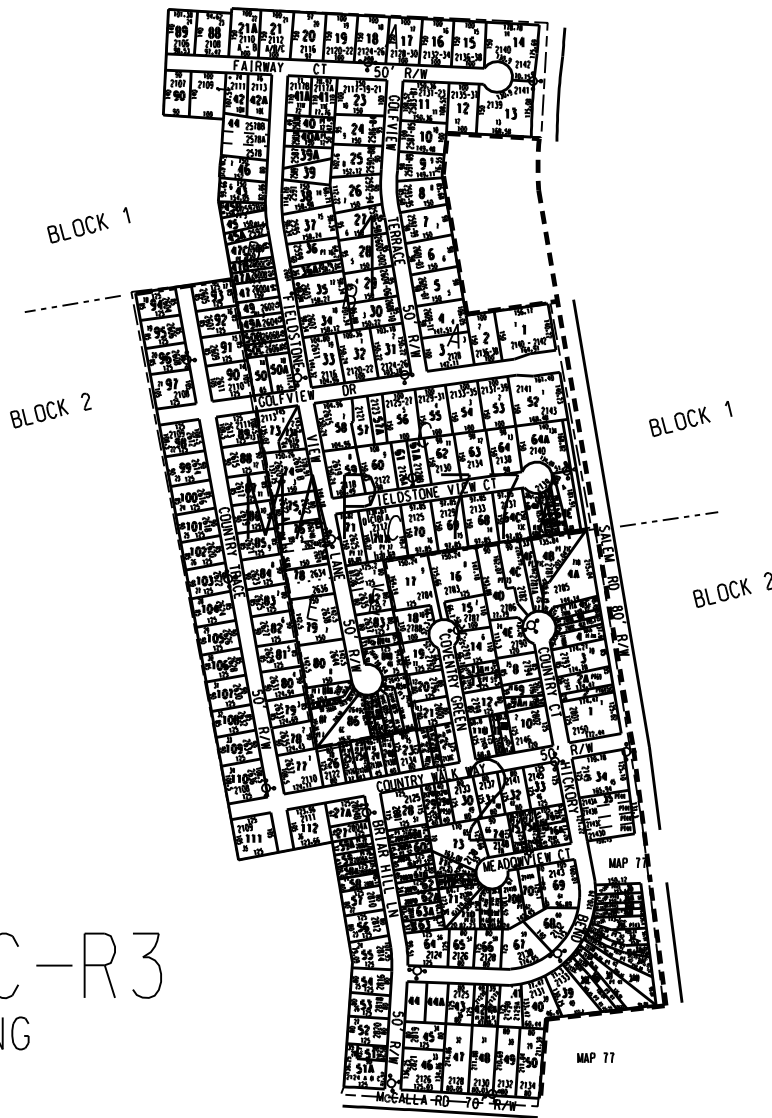
BLOCK 1

- FIELDSTONE VIEW UNIT 1 1977 (PAR 1 - 3, 31, 32, 52 - 57)
- FIELDSTONE VIEW UNIT 2 1978 (PAR 4 - 19, 23 - 30)
- FIELDSTONE VIEW UNIT 3 1979 (PAR 20, 21, 21A, 33 - 80)
- FIELDSTONE VIEW UNIT 4 1983 (PAR 82 - 87)
- FIELDSTONE VIEW UNIT 5 1983 (PAR 88 - 91)

BLOCK 2

- COUNTRY WALK AT FIELDSTONE UNIT 1 1983 (PAR 1 - 34)
- COUNTRY WALK AT FIELDSTONE UNIT 2 1984 (PAR 35 - 76)
- COUNTRY WALK AT FIELDSTONE PHASE 2 UNIT 1 1985 (PAR 77 - 112)

SRC-R3  
ZONING

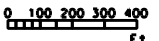


LEGEND

- County Boundary
- Map Boundary
- Limit of Ownership
- Original Planned Line
- District Line
- Railroad Right of Way
- City Limit
- Easement
- Stream
- CHURCH
- SCHOOL
- CEMETERY

NOTES:

1. PARCEL 77A-2-4F OUT OF 77A-2-4B FOR '99 1465/22 2-3-98 I.U.S. 7-28-98
2. PARCEL 77A-2-2A OUT OF 77A-2-2 FOR '99 1640/153 12-28-98 I.U.S. 11-17-99
3. PARCEL 77A-2-36D OUT OF 77A-2-36 FOR 2000 1689/110 3-30-99 I.U.S. 12-14-99
4. PARCEL 77A-1-85A OUT OF 77A-1-85 FOR 2001 1869/30 5-24-2000 I.U.S. 8-9-2000
5. PARCEL 77A-2-51A OUT OF 77A-2-51 FOR 2001 1878/97 5-24-2000 I.U.S. 8-25-2000
6. PARCEL 77A-1-64C OUT OF 77A-1-64B FOR 2001 1907/22 8-31-2000 I.U.S. 10-26-2000
7. PARCEL 77A-1-64F OUT OF 77A-1-64B FOR 2001 1922/235 9-13-2000 I.U.S. 11-16-2000
8. PARCEL 77A-2-25A OUT OF 77A-2-25 FOR 2001 1959/32 12-29-2000 I.U.S. 2-22-2001
9. PARCELS 77A-1-44A & 77A-1-44B COMBINED WITH 77A-1-44 FOR 2001 PER B.O.E. DT L. COMBIE I.U.S. 5-5-2001
10. 77A-1-71A from 77A-1-71 and 2422/68 3/31/02
11. 77A-2-18A from 77A-2-18 and 2423/118 5/28/02
12. 77A-2-35A, 35B & 35C combined with 177/35 by owners request 10/2003



|                    |                     |                  |
|--------------------|---------------------|------------------|
| TAX VALUATION MAP  | LAND LOT 202- 215   | MAP NO.          |
| ROCKDALE COUNTY    | DISTRICT 10         | 77A              |
| GEORGIA            | C. M. D. SE1        |                  |
| DATE: DEC. 1, 1987 | LAST REVISION: 2002 | PHOTO NO. 11-200 |