

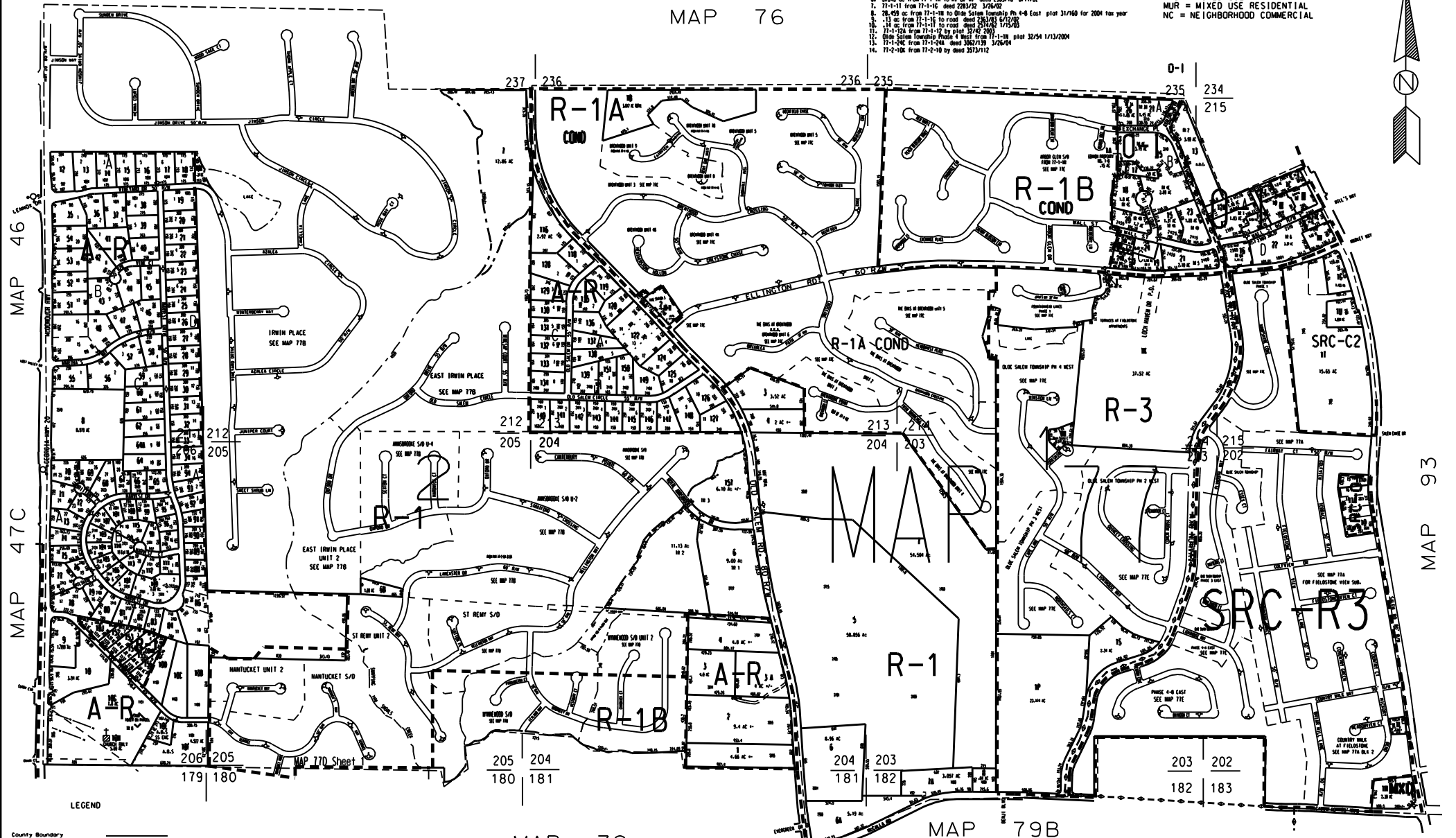
THIS MAP HAS BEEN COMPILED FROM THE MOST AUTHENTIC INFORMATION AVAILABLE, AND NEITHER ROCKDALE COUNTY NOR HURDITZ AND ASSOCIATES, INC. ASSUME RESPONSIBILITY FOR ERRORS OR OMISSIONS.

- NOTES:
- 72-2-54 OUT OF 72-2-5 FROM '89 PER DEED 1468/122 1-28-89
 - 77-1-23 OUT OF 77-1-14 FOR 1993 158/28 1-16-93 163-5 7-27-98
 - 77-1-248 FROM 77-1-244 deed 2142/11 10/16/01
 - 77-1-53 FROM 77-1-18 deed 2152/55 12/21/01
 - 77-2-42 FROM 77-2-6 deed 2192/106 12/21/01
 - 0.940 ac from 77-1-18 to R. D. W. deed 2363/78 6/11/02
 - 77-1-11 FROM 77-1-10 deed 2283/12 3/26/02
 - 26.492 ac from 77-1-18 to Old Salem Township Ph 4-B East plat 31/160 for 2004 tax year
 - .13 ac from 77-1-10 to road deed 2361/41 6/12/03
 - .14 ac from 77-1-11 to road deed 2374/3 1/15/03
 - 77-1-158 FROM 77-1-157 by plat 3742 2/20/03
 - Old Salem Township Phase 4 West from 77-1-18 plat 32/54 1/13/2004
 - 77-1-42C FROM 77-1-42C deed 3062/129 3/26/04
 - 77-2-106 FROM 77-2-10 by deed 3513/112

--- Salem Road Corridor Overlay Zoning district
 CID = CIVIC INSTITUTIONAL
 CSD = CONSERVATION SUBDIVISION
 MKD = MIXED USE
 MUR = MIXED USE RESIDENTIAL
 NC = NEIGHBORHOOD COMMERCIAL



MAP 76



MAP 46

MAP 47C

MAP 93

LEGEND

- County Boundary
- Map Boundary
- Line of Ownership
- Original Platted Line
- District Line
- Right-of-Way
- City Limit
- Easement
- Stream
- CHURCH
- SCHOOL
- CEMETERY

KAY TERRACE NORTH 1999 (PAR 10J, 152 - 156) from 72-2-10J
 V. C. ELLINGTON SUB. PB. A, PG. 146
 MARTHAS VINEYARD UNIT 2 1980 (PAR 65 - 115)
 MARTHAS VINEYARD UNIT 1 1978 (PAR 12 - 64)

MAP 79

GROSS OFFICE PARK PH 4 1992 (PAR 14)
 GROSS OFFICE PARK PH 1 1992 (PAR 12, 13)
 OLD SALEM ESTATES UNIT 3 1985 (PAR 140 - 151)
 OLD SALEM ESTATES UNIT 2 1984 (PAR 128 - 139)
 OLD SALEM ESTATES UNIT 1 1984 (PAR 118 - 127)

MAP 79B

TAX VALUATION MAP	LAND LOT 181 - 182	MAP NO.
ROCKDALE COUNTY	202 - 206 211 - 215	77
GEORGIA	DISTRICT 10	
	O. M. O. 351	
DATE: DEC. 1, 1987 LAST REVISION 2004	PHOTO: M.S. 127	1" = 400'