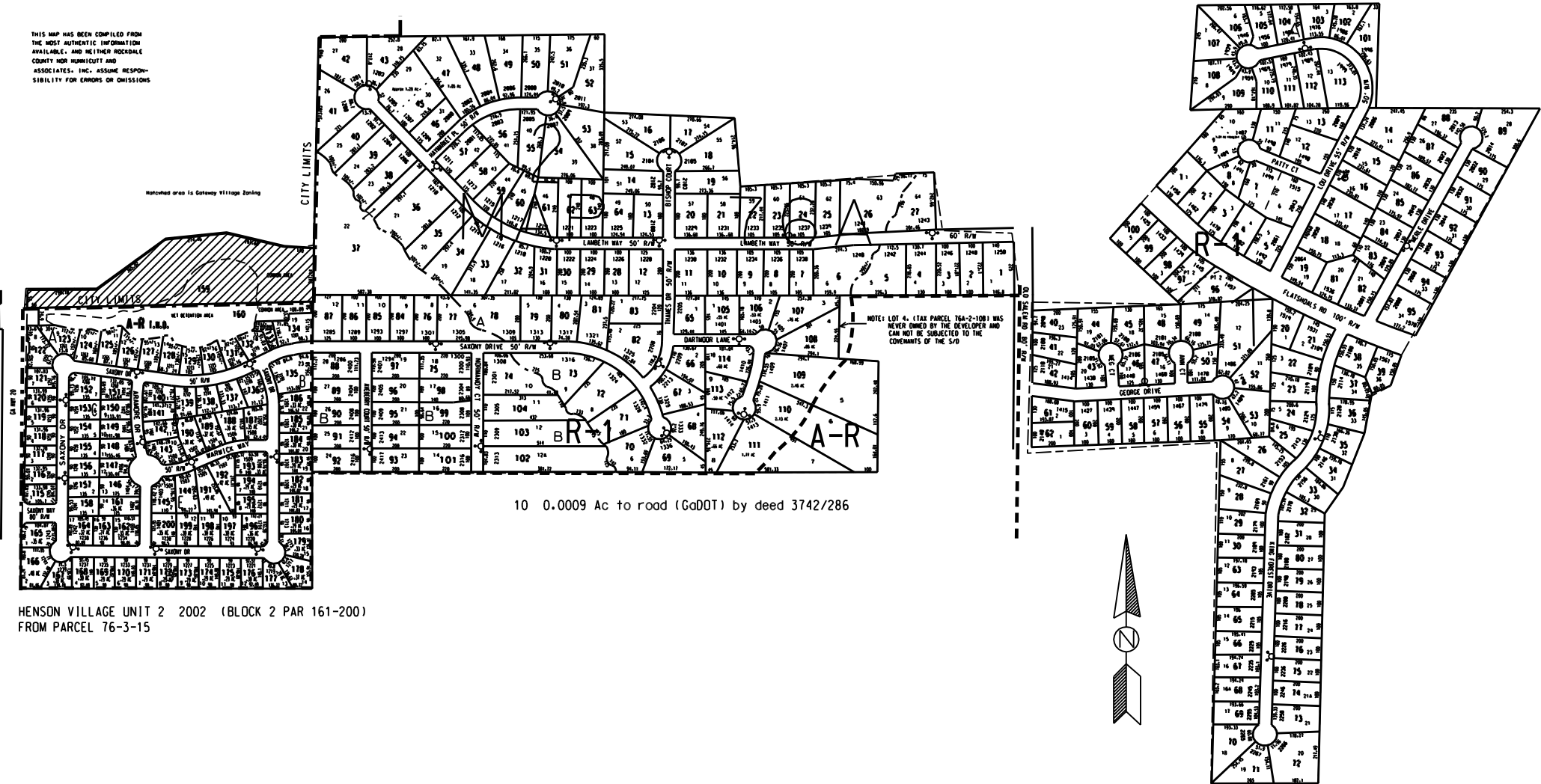


THIS MAP HAS BEEN COMPILED FROM THE MOST AUTHENTIC INFORMATION AVAILABLE, AND NEITHER ROCKDALE COUNTY NOR HUNNIBERT AND ASSOCIATES, INC. ASSUME RESPONSIBILITY FOR ERRORS OR OMISSIONS.

Hatched area is Gateway Village Zoning

CITY LIMITS



10 0.0009 Ac to road (GaDOT) by deed 3742/286

HENSON VILLAGE UNIT 2 2002 (BLOCK 2 PAR 161-200)  
FROM PARCEL 76-3-15

LEGEND

- County Boundary
- Map Boundary
- Line of Ownership
- Original Platted Line
- District Line
- Railroad Right of Way
- City Limits
- Casement
- Stream
- CHURCH
- SCHOOL
- CEMETERY

- HENSON VILLAGE UNIT 1 1994 (BLOCK 2 PAR 115 - 160)
- LAMBETH EST UNIT 5 1994 (BLOCK 2 PAR 105 - 114)
- LAMBETH EST UNIT 4 1991 (BLOCK 2 PAR 84 - 104)
- LAMBETH EST UNIT 3 1990 (BLOCK 2 PAR 65 - 83)
- LAMBETH EST UNIT 2 1987 (BLOCK 2 PAR 28 - 64)
- LAMBETH EST UNIT 1 1986 (BLOCK 2 PAR 1 - 27)

BLOCK 1

- AUTUMN RIDGE 1988 (PAR 101 - 113)
- PARK PLACE UNIT 1 1977 (PAR 96 - 100)
- FLAT SHOALS ACRES SEC 3 1973 (PAR 81 - 95)
- FLAT SHOALS ACRES SEC 2 1971 (PAR 14 - 19)
- FLAT SHOALS ACRES SEC 1 1969 (PAR 1 - 13)
- KINGS FOREST UNIT 1 SEC 2 1982 (PAR 63 - 80)
- KINGS FOREST UNIT 1 SEC 1 1971 (PAR 31 - 39)
- WILLINGHAM EST 1971 (PAR 40 - 62)

0 100 200 300 400  
Ft.

TAX VALUATION MAP	LAND LOT 236-237	MAP NO.
ROCKDALE COUNTY	DISTRICT 10	76A
GEORGIA	C. M. D.	

DATE: DEC. 1, 1987 (LAST REVISION 2002) PHOTO: HD.