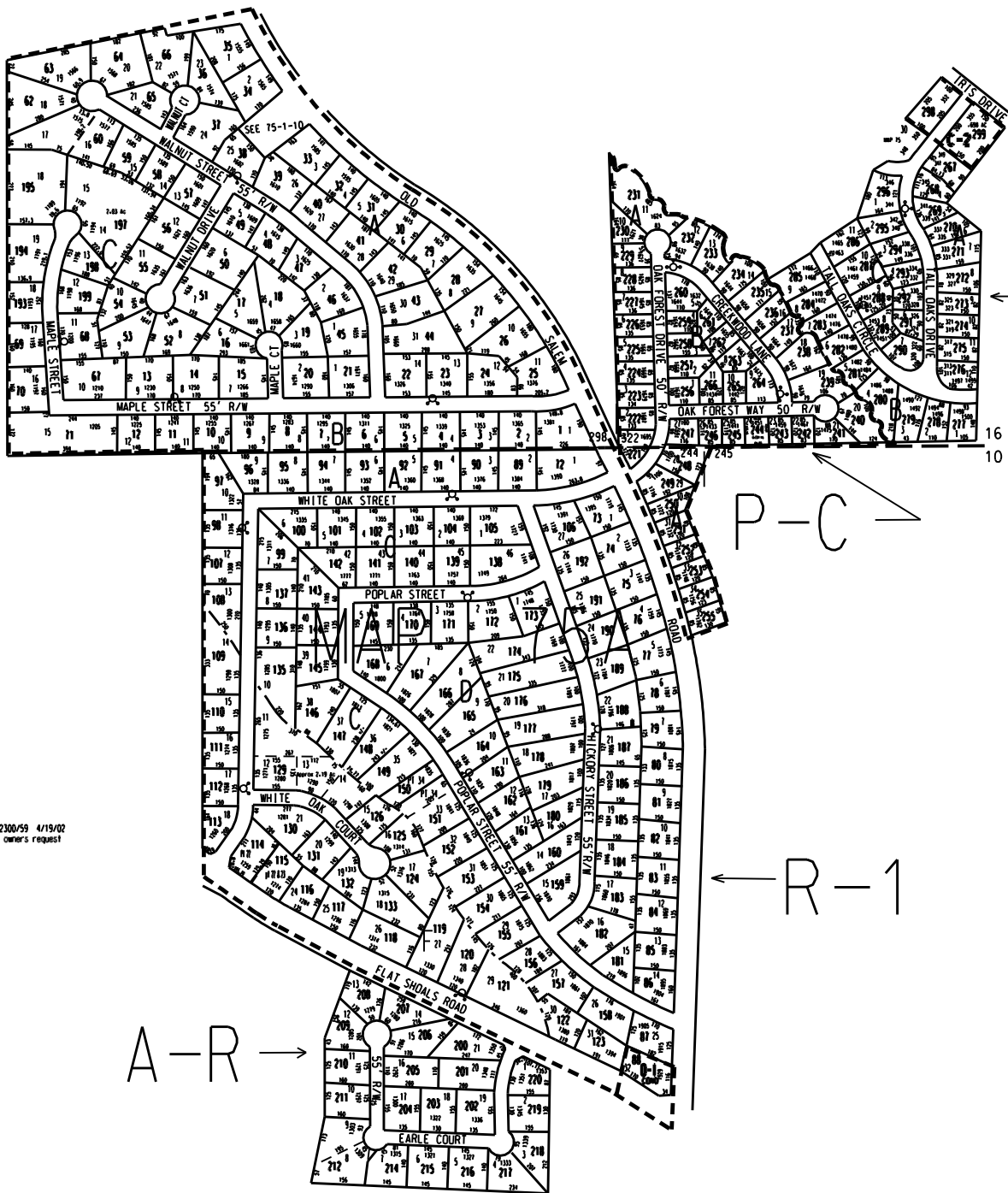


THIS MAP HAS BEEN COMPILED FROM THE MOST AUTHENTIC INFORMATION AVAILABLE, AND NEITHER ROCKDALE COUNTY NOR HUMPHREY AND ASSOCIATES, INC. ASSUME RESPONSIBILITY FOR ERRORS OR OMISSIONS.



← R-3

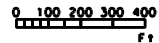
16 DISTRICT
10 DISTRICT

P-C →

← R-1

A-R →

TALL OAKS 1979 (PAR 276 - 299)
 OAK FOREST 1972 (PAR 221 - 266)
 EARLE COURT 1971 (PAR 200 - 220)
 PINE FOREST UNIT 2 SECTION 3 (PAR 107 - 137)
 PINE FOREST UNIT 2 (PAR 72 - 106, 138 - 192)
 PINE FOREST UNIT 1 (PAR 1 - 71, 193 - 199)



Note:
 1. 0.009 ac from 754-1-114 to 754-1-115. deed 2300/59 4/19/02
 2. 754-1-128 & 134 combined with 754-1-129 by owners request

LEGEND

County Boundary	—————
Map Boundary	—————
Limit of Ownership	—————
Original Platted Line	—————
District Line	—————
Railroad Right of Way	—————
City Limit	—————
Easement	—— X ——
Stream	~~~~~
CHURCH	⊕
SCHOOL	⊕
CEMETERY	⊕

TAX VALUATION MAP	LAND LOT	MAP NO.
ROCKDALE COUNTY	298 & 322 16 DISTRICT	75A
GEORGIA	244 & 245 10 DISTRICT	
	DISTRICT — 10 — 16	
	C. M. O. —	
DATE: DEC. 1, 1987	LAST REVISION: 2004	PHOTO NO. —