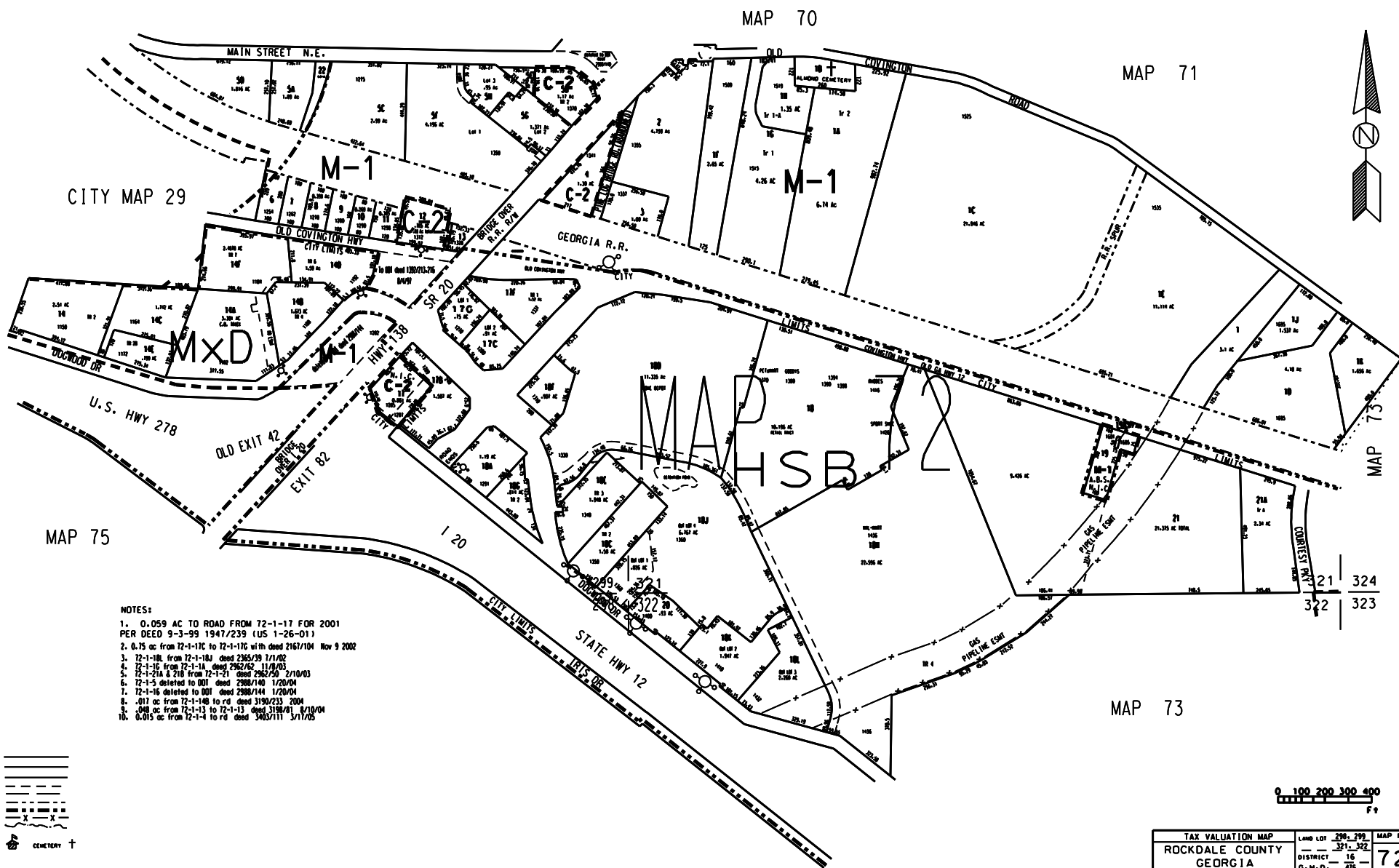


THIS MAP HAS BEEN COMPILED FROM THE MOST AUTHENTIC INFORMATION AVAILABLE, AND NEITHER ROCKDALE COUNTY NOR HUMPHRETT AND ASSOCIATES, INC. ASSUME RESPONSIBILITY FOR ERRORS OR OMISSIONS



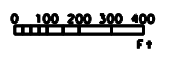
- NOTES:
- 0.059 AC TO ROAD FROM 72-1-17 FOR 2001 PER DEED 9-3-99 1947/239 (US 1-26-01)
 - 6.15 ac from 72-1-17C to 72-1-17G with deed 2167/104 Nov 9 2002
 - 72-1-18L from 72-1-18J deed 2365/39 1/1/02
 - 72-1-15 from 72-1-14 deed 2962/52 11/9/03
 - 72-1-21A & 21B from 72-1-21 deed 2962/50 2/10/03
 - 72-1-5 deleted to DOI deed 2988/140 1/20/04
 - 72-1-16 deleted to DOI deed 2988/144 1/20/04
 - .011 ac from 72-1-16B to rd deed 3190/233 2/04
 - .408 ac from 72-1-13 to 72-1-13 deed 3191/1 8/10/04
 - 0.015 ac from 72-1-4 to rd deed 3403/111 3/17/05

LEGEND

- County Boundary
- Map Boundary
- Limit of Donership
- Original Platted Line
- District Line
- Railroad Right of Way
- City Limit
- Easement
- Stream

CHURCH SCHOOL CEMETERY

N.I.C. = NOT IN CITY



TAX VALUATION MAP	LAND LOT 298-299	MAP NO.
ROCKDALE COUNTY	321-322	72
GEORGIA	DISTRICT 16	
	G.M.D. 476	
DRAWN DEC. 1, 1987	LAST REVISION 2004	PHOTO NO. BSC 64, 66