

MAP 68

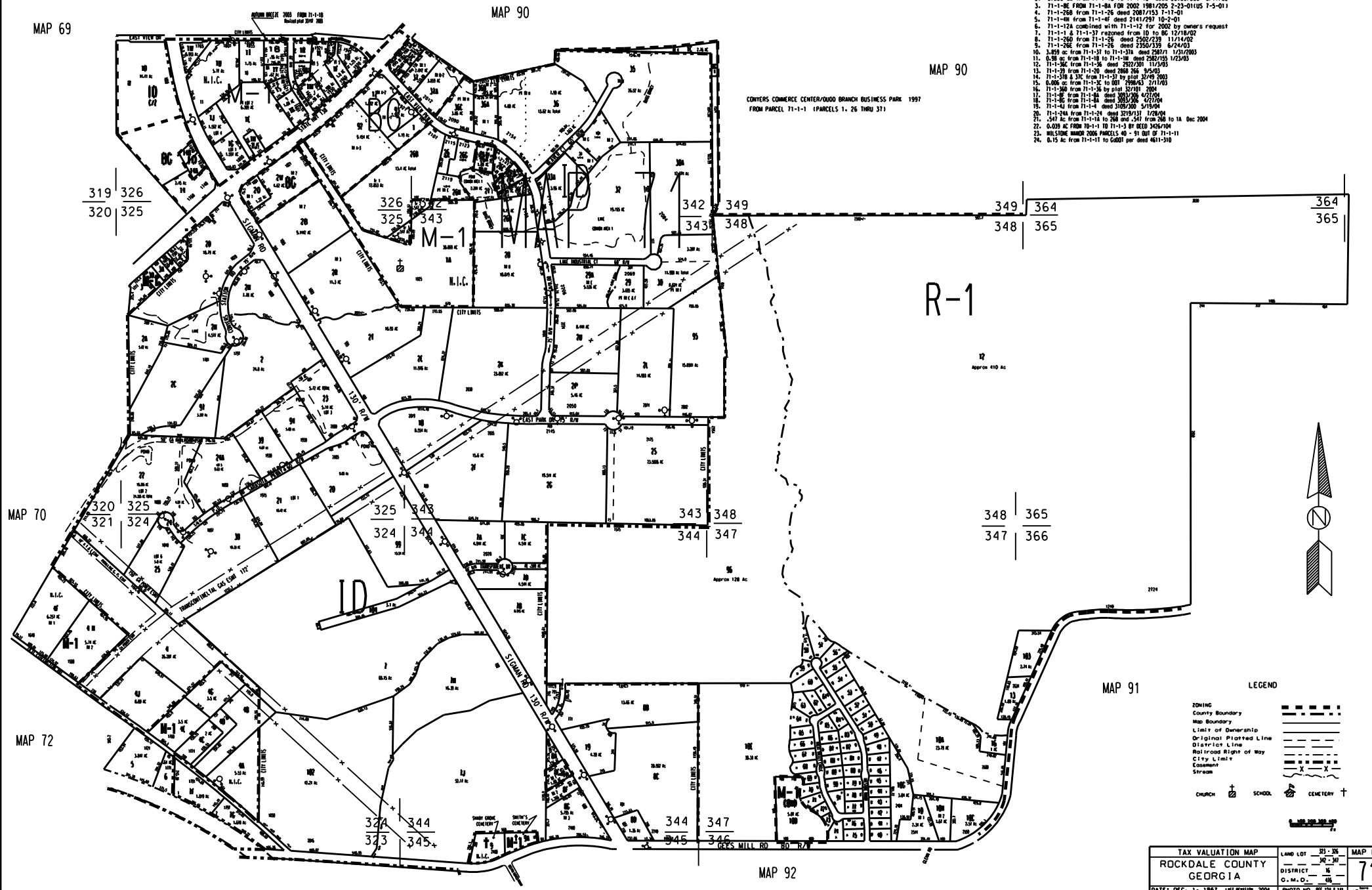
MAP 90

MAP 69

MAP 90

- NOTES:
- 71-1-38 FROM 71-1-20 FOR '99 1604/210 3-14-97 12-4-99 US1
  - 0.856 ac from 71-1-18 to 71-1-11 deed 23-59/206 6/11/02
  - 71-1-8E FROM 71-1-8A FOR 2002 1981/205 2-23-01US 7-5-01
  - 71-1-268 from 71-1-26 deed 2081/153 7-17-01
  - 71-1-48 from 71-1-47 deed 2141/291 10-2-01
  - 71-1-12A combined with 71-1-12 for 2002 by owners request
  - 71-1-1 & 71-1-37 rezoned from ID to RC 12/18/02
  - 71-1-268 from 71-1-26 deed 2552/238 11/14/02
  - 71-1-268 from 71-1-26 deed 2350/339 6/24/03
  - 3.69 ac from 71-1-31 to 71-1-31a deed 2587/1 1/31/03
  - 0.58 ac from 71-1-18 to 71-1-18 deed 2521/151 1/23/03
  - 71-1-36C from 71-1-36 deed 2922/201 11/2/03
  - 71-1-38 from 71-1-20 deed 268 266 3/4/03
  - 71-1-31B & 31C from 71-1-31 by plat 32/49 2003
  - 0.606 ac from 71-1-32 to 71-1-32A deed 2796/43 7/11/03
  - 71-1-36D from 71-1-36 by plat 32/101 2004
  - 71-1-3E from 71-1-3A deed 3007/206 4/27/04
  - 71-1-32 from 71-1-3A deed 3007/206 4/27/04
  - 71-1-42 from 71-1-4 deed 3109/200 5/19/04
  - 71-1-14A from 71-1-24 deed 3219/117 1/22/04
  - .547 Ac from 71-1-1A to 268 and .547 from 268 to 1A Dec 2004
  - 0.029 ac from 70-1-1 to 71-1-3 BY 8120 3/26/04
  - MILSTONE MOUND 2006 PARCELS 40 - 51 OUT OF 71-1-11
  - 0.15 ac from 71-1-11 to 6001 per deed 4611-310

COVERS COMMERCE CENTER/QUOD BRANCH BUSINESS PARK 1997 FROM PARCEL 71-1-1 (PARCELS 1, 26 THRU 37)



LEGEND

- ZONING: [Symbol] ZONING
- County Boundary: [Symbol] County Boundary
- Map Boundary: [Symbol] Map Boundary
- Limit of Ownership: [Symbol] Limit of Ownership
- Original Platted Line: [Symbol] Original Platted Line
- District Line: [Symbol] District Line
- Railroads Right of Way: [Symbol] Railroads Right of Way
- City Limit: [Symbol] City Limit
- Common: [Symbol] Common
- Stream: [Symbol] Stream
- CHURCH: [Symbol] CHURCH
- SCHOOL: [Symbol] SCHOOL
- CEMETERY: [Symbol] CEMETERY

TAX VALUATION MAP	LAND LOT 33-36	MAP NO.
ROCKDALE COUNTY	36-39	71
GEORGIA	DISTRICT 4	
	G.M.O. 46	
DATE: DEC. 1, 1967 LAST REVISION 2004	PHOTO NO. BE 101 1/4	