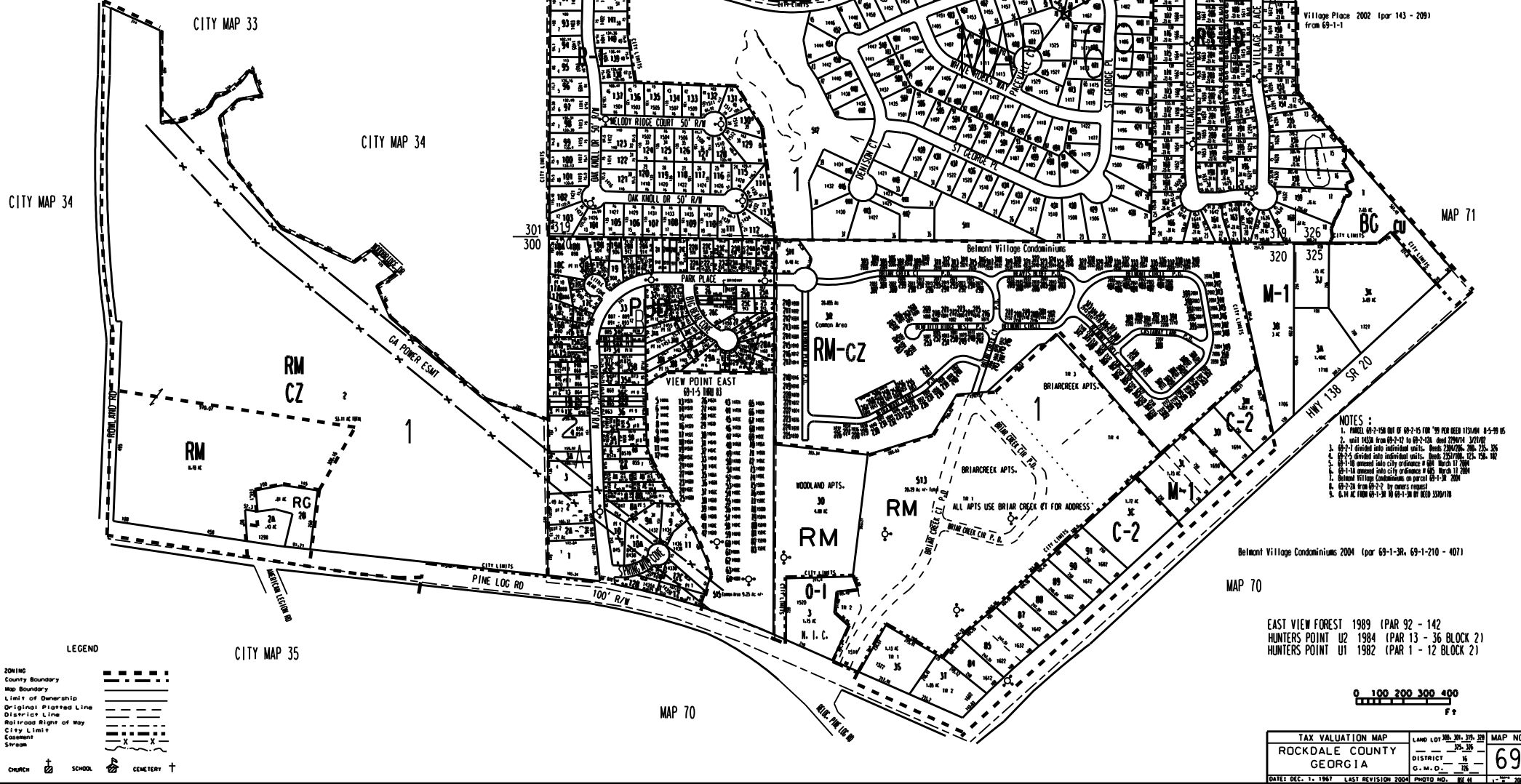
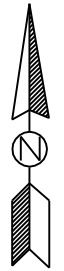


THIS MAP HAS BEEN COMPILED FROM THE MOST AUTHENTIC INFORMATION AVAILABLE AND NEITHER ROCKDALE COUNTY NOR HUBB/CUTT AND ASSOCIATES, INC., ASSUME RESPONSIBILITY FOR ERRORS OR OMISSIONS

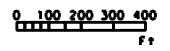
MAP 67



- NOTES:
1. PARCEL 69-1-120 OUT OF 69-1-15 100' TO BE REOPENED 04-29-05
 2. UNIT 1432A FROM 69-2-12 TO 69-2-12A, DEED 2296714, 12/17/02
 3. 69-2-1 divided into individual units. Deeds 2296706, 206, 225, 226
 4. 69-2-5 divided into individual units. Deeds 2251706, 123, 124, 142
 5. 69-1-18 amended into city ordinance # 684, March 11, 2004
 6. 69-1-14 amended into city ordinance # 685, March 11, 2004
 7. Deed 2111 large Condominium on parcel 69-1-18 2004
 8. 69-2-28 FROM 69-2-2 TO 69-2-28 BY OWNER REQUEST
 9. 64.4 AC FROM 69-1-18 TO 69-1-18 BY DEED 1204110

Belmont Village Condominiums 2004 (par 69-1-3R, 69-1-210 - 407)

EAST VIEW FOREST 1989 (PAR 92 - 142)
 HUNTERS POINT U2 1984 (PAR 13 - 36 BLOCK 2)
 HUNTERS POINT U1 1982 (PAR 1 - 12 BLOCK 2)



TAX VALUATION MAP	LAND LOT 268, 269, 270	MAP NO.
ROCKDALE COUNTY	DISTRICT 16	69
GEORGIA	C. & G. O.	

LEGEND

- ZONING
- County Boundary
- Map Boundary
- Line of Demarcation
- Original Platted Line
- District Line
- Right-of-Way
- City Limit
- Easement
- Stream

CHURCH SCHOOL CEMETERY