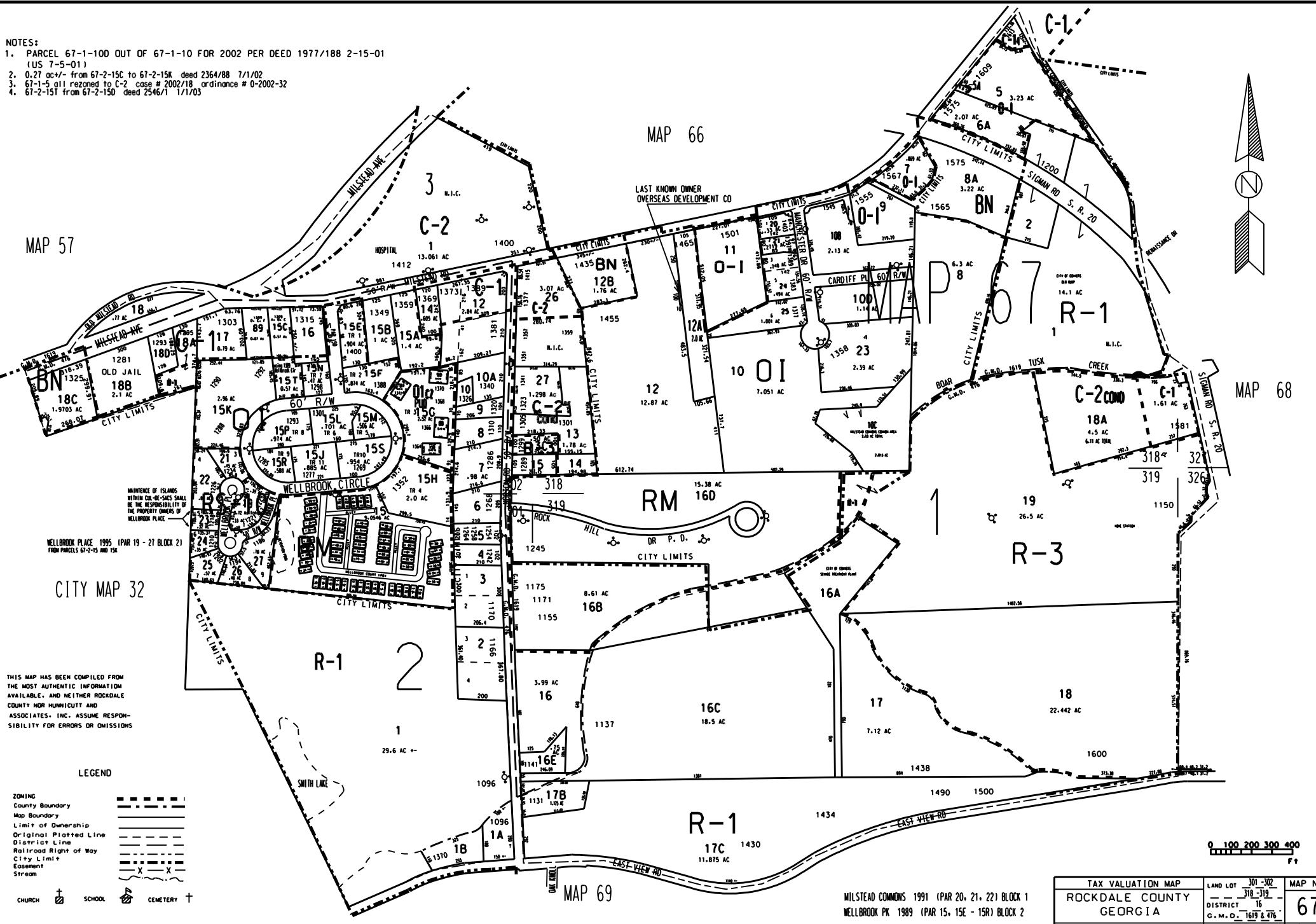


- NOTES:
1. PARCEL 67-1-10D OUT OF 67-1-10 FOR 2002 PER DEED 1977/188 2-15-01 (US 7-5-01)
 2. 0.27 ac +/- from 67-2-15C to 67-2-15K deed 2364/88 7/1/02
 3. 67-1-5 all rezoned to C-2 case # 2002/18 ordinance # 0-2002-32
 4. 67-2-15T from 67-2-15D deed 2546/1 1/1/03



THIS MAP HAS BEEN COMPILED FROM THE MOST AUTHENTIC INFORMATION AVAILABLE, AND NEITHER ROCKDALE COUNTY NOR HUMPHREY AND ASSOCIATES, INC. ASSUME RESPONSIBILITY FOR ERRORS OR OMISSIONS

- LEGEND
- ZONING
 - County Boundary
 - Map Boundary
 - Limit of Ownership
 - Original Platted Line
 - District Line
 - Railroad Right of Way
 - City Limit
 - Easement
 - Stream

- CHURCH
- SCHOOL
- CEMETERY

TAX VALUATION MAP	LAND LOT 301-302	MAP NO.
ROCKDALE COUNTY	318-319	67
GEORGIA	DISTRICT 15	
	G. M. D. 1619 & 316	
DATE: DEC. 1, 1967 LAST REVISION 2003	PHOTO NO. BSE 42	1" = 200'