

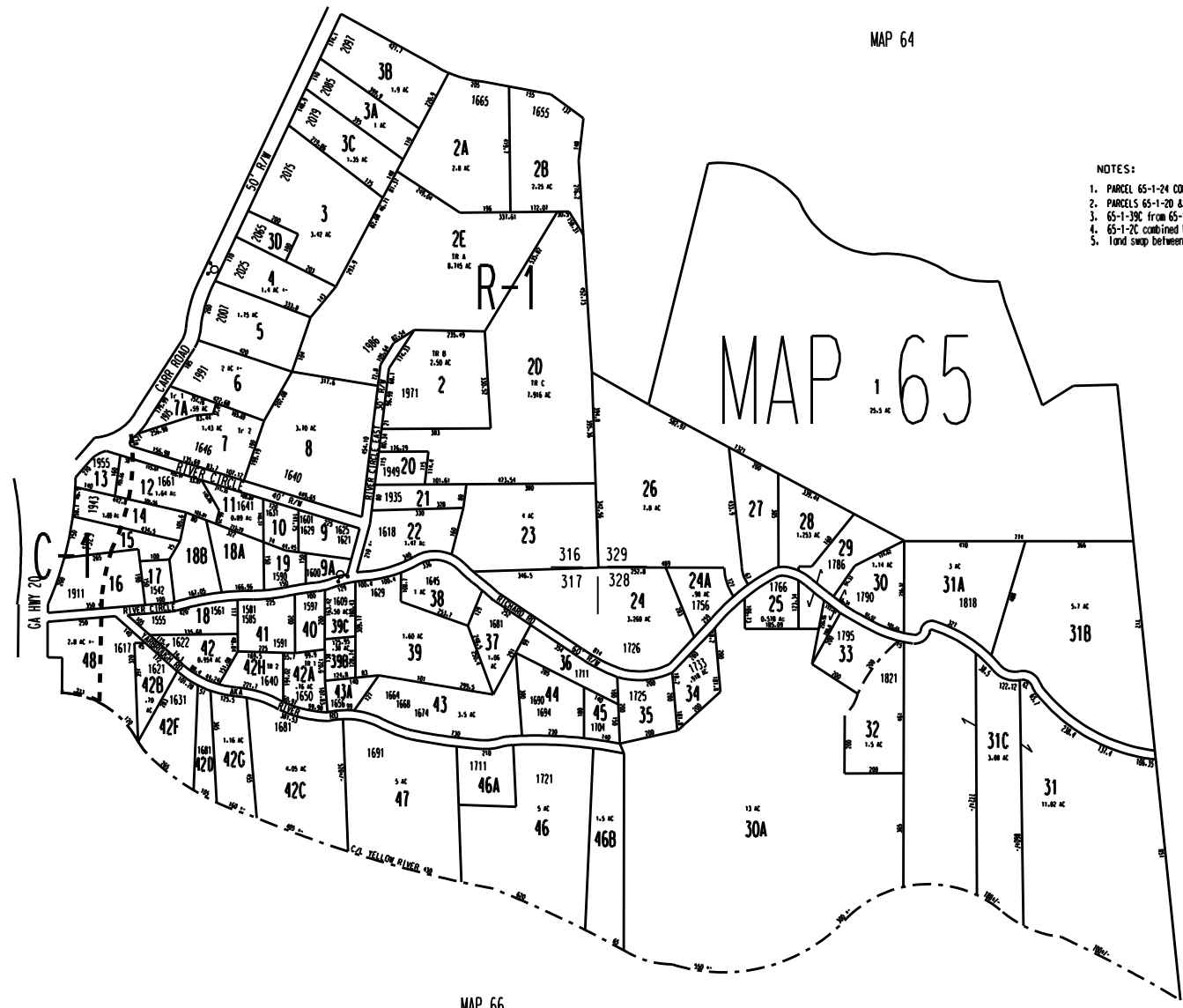
THIS MAP HAS BEEN COMPILED FROM THE MOST AUTHENTIC INFORMATION AVAILABLE, AND NEITHER ROCKDALE COUNTY NOR MURKIN CUTT AND ASSOCIATES, INC. ASSUME RESPONSIBILITY FOR ERRORS OR OMISSIONS



MAP 55

MAP 64

- NOTES:
1. PARCEL 65-1-24 CORRECTED FOR 2001 PER DEED AND PLAT 18-31-00 U.S.
 2. PARCELS 65-1-20 & 65-1-2E OUT OF 65-1-2 FOR 2002 PER DEEDS 1988/194-196 3-7-01 (US 7-5-01)
 3. 65-1-39C from 65-1-39B deed 2053/252 6/12/01
 4. 65-1-2C combined with 65-1-2E by plat 31/195
 5. Land swap between 65-1-7 & 65-1-1A deed 2898/61 & 62 10/14/03



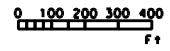
MAP 65

MAP 64

MAP 66

LEGEND

- ZONING
- County Boundary
- Map Boundary
- Limit of Ownership
- Original Platted Line
- District Line
- Railroad Right of Way
- City Limit
- Equipment
- Stream
- CHURCH
- SCHOOL
- CEMETERY



TAX VALUATION MAP		LAND LOT	316-317	MAP NO.	65
ROCKDALE COUNTY		DISTRICT	16		
GEORGIA		C. M. D.	1619		
DATE: DEC. 3, 1987 LAST REVISION 2001		PHOTO NO.	8E 01 08		