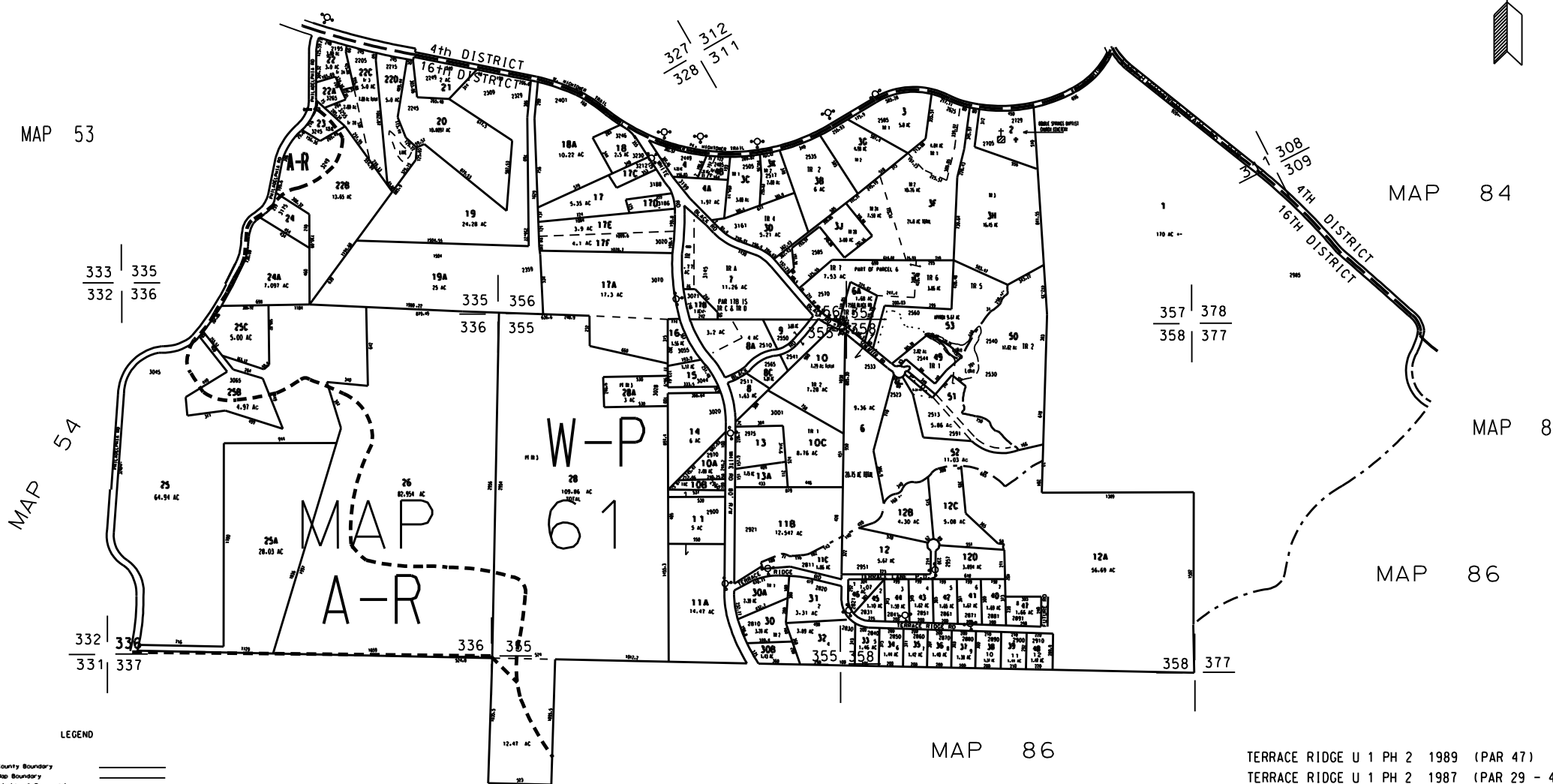


THIS MAP HAS BEEN COMPILED FROM THE MOST AUTHENTIC INFORMATION AVAILABLE, AND NEITHER ROCKDALE COUNTY NOR HIGHWELL AND ASSOCIATES, INC. ASSUME RESPONSIBILITY FOR ERRORS OR OMISSIONS

NOTES:

1. PARCEL 61-1-3J OUT OF 61-1-3F FOR 2001 PER DEED 1961/204 12-20-00 (US 2-28-01)
2. 0.324 ac from 61-1-4 to 61-1-4B deed 2224/231 1-24-02
3. 2.00 ac from 61-1-22 to 61-1-22C deed 3163/24 3/20/04
4. 2.2 AC FROM 61-1-5 TO 61-1-5C BY DEED 3106/24

MAP 60



LEGEND

| | |
|-----------------------|-------|
| County Boundary | ===== |
| Map Boundary | ----- |
| Limit of Ownership | ----- |
| Original Platted Line | ----- |
| District Line | ----- |
| Railroad Right of Way | ----- |
| City Limits | ----- |
| Casement | ----- |
| Stream | ----- |

CHURCH + SCHOOL + CEMETERY +

TERRACE RIDGE U 1 PH 2 1989 (PAR 47)
TERRACE RIDGE U 1 PH 2 1987 (PAR 29 - 46)

| | | |
|-------------------|------------------|---------|
| TAX VALUATION MAP | LAND LOT 335-336 | MAP NO. |
| ROCKDALE COUNTY | 355-356-317-318 | 61 |
| GEORGIA | DISTRICT 16 | |
| | C. M. D. 475 | |