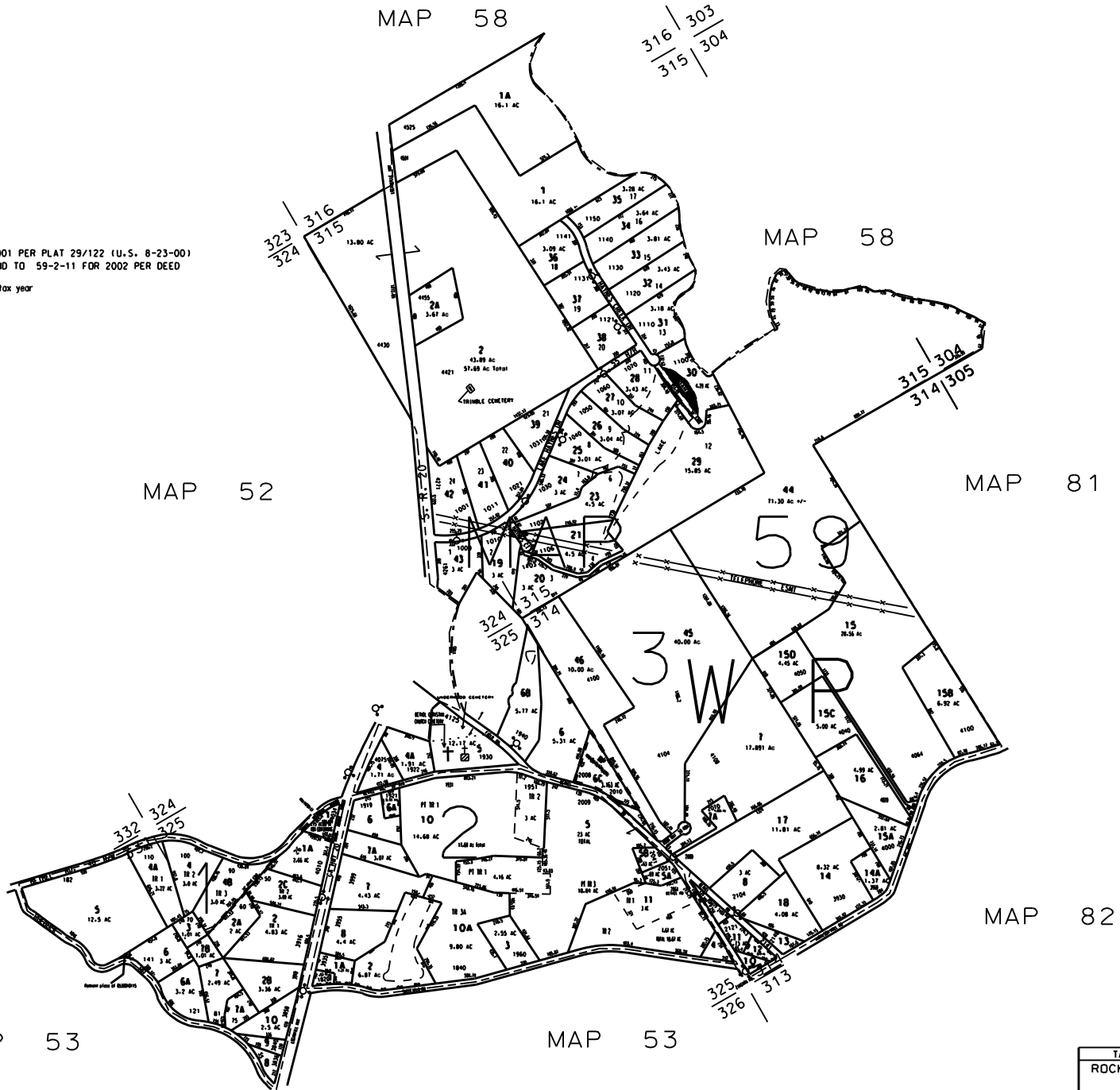


THIS MAP HAS BEEN COMPILED FROM THE MOST AUTHENTIC INFORMATION AVAILABLE, AND NEITHER ROCKDALE COUNTY NOR HUNNICUTT AND ASSOCIATES, INC. ASSUME RESPONSIBILITY FOR ERRORS OR OMISSIONS.

NOTES:

1. PARCEL 59-1-2C OUT OF 59-1-2 FOR 2001 PER PLAT 29/122 (U.S. 8-23-00)
2. PARCEL 59-2-5 SPLIT; ADDITIONAL LAND TO 59-2-11 FOR 2002 PER DEED 2038/220 4-25-01 (U.S. 7-5-01)
3. 55-3-150 from 59-3-15 by plat 30/140 for 04 tax year



LEGEND

- County Boundary
 - Map Boundary
 - Line of Ownership
 - Original Platted Line
 - District Line
 - Right-of-Way
 - City Limit
 - Easement
 - Stream
- CHURCH SCHOOL CEMETERY

TAX VALUATION MAP	LAND LOT 314 - 316	MAP NO.
ROCKDALE COUNTY	324 - 325	59
GEORGIA	DISTRICT 4	
	S. M. D. 415	
DATE: DEC. 1, 1987 LAST REVISION 2004	PHOTO NO. 118	1" = 1" 400'