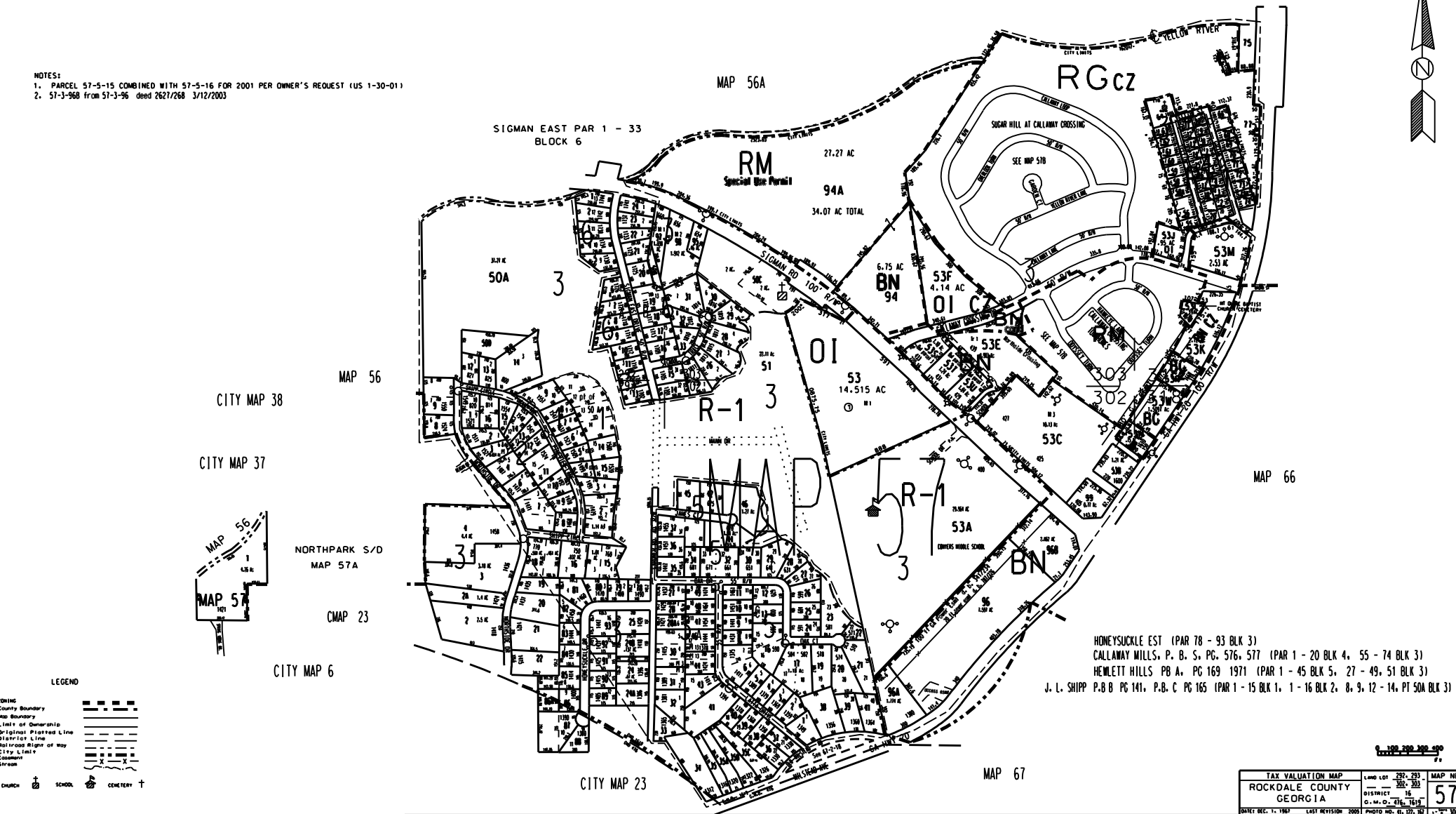


THIS MAP HAS BEEN COMPILED FROM THE MOST AUTHENTIC INFORMATION AVAILABLE, AND NEITHER ROCKDALE COUNTY NOR HERRICUTT AND ASSOCIATES, INC. ASSUME RESPONSIBILITY FOR ERRORS OR OMISSIONS

- NOTES:
 1. PARCEL 57-5-15 COMBINED WITH 57-5-16 FOR 2001 PER OWNER'S REQUEST (US 1-30-01)
 2. 57-3-96B FROM 57-3-96 DEED 2627/268 3/12/2003



TAX VALUATION MAP		LAND LOT 297-293	MAP NO.
ROCKDALE COUNTY		300-303	57
GEORGIA		DISTRICT 15	
DATE DEC. 11, 1987		LAST REVISION 2005	PHOTO NO. 01, 02, 03, 04, 05, 06, 07, 08, 09, 10, 11, 12, 13, 14, 15, 16, 17, 18, 19, 20, 21, 22, 23, 24, 25, 26, 27, 28, 29, 30, 31, 32, 33, 34, 35, 36, 37, 38, 39, 40, 41, 42, 43, 44, 45, 46, 47, 48, 49, 50, 51, 52, 53, 54, 55, 56, 57, 58, 59, 60, 61, 62, 63, 64, 65, 66, 67, 68, 69, 70, 71, 72, 73, 74, 75, 76, 77, 78, 79, 80, 81, 82, 83, 84, 85, 86, 87, 88, 89, 90, 91, 92, 93, 94, 95, 96, 97, 98, 99, 100