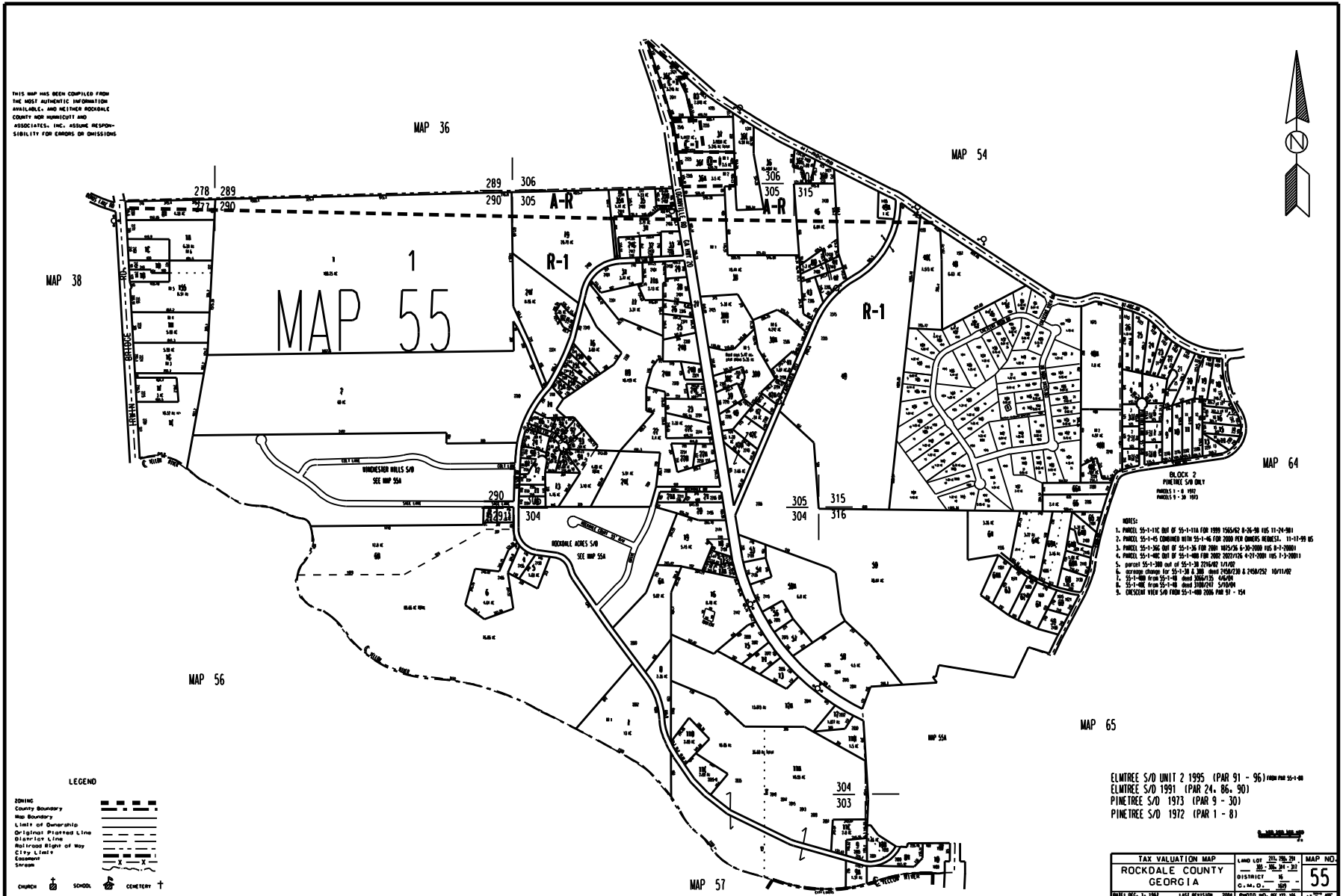


THIS MAP HAS BEEN COMPILED FROM THE MOST AUTHENTIC INFORMATION AVAILABLE, AND NEITHER ROCKDALE COUNTY NOR HUNTERDUTY AND ASSOCIATES, INC. ASSUME RESPONSIBILITY FOR ERRORS OR OMISSIONS



- NOTES:
1. PARCEL 55-1-11C OUT OF 55-1-11A FOR 1999 150542 8-26-98 TIS 11-24-94
  2. PARCEL 55-1-45 COMBINED WITH 55-1-46 FOR 2000 PER ORDINANCE 98254, 11-17-99 IS
  3. PARCEL 55-1-36C OUT OF 55-1-36 FOR 2001 105256 6-29-2001 TIS 8-1-2001
  4. PARCEL 55-1-48C OUT OF 55-1-48 FOR 2002 2002725 4-21-2002 TIS 1-3-2002
  5. Parcel 55-1-38B out of 55-1-38 221640 1/1/02
  6. Parcel change for 55-1-24 & 55-1-24B 105256 8-24/25/02 10/11/02
  7. 55-1-48B from 55-1-48 2002725 5/16/04
  8. 55-1-48C from 55-1-48 2002725 5/16/04
  9. CENSUS TRAIL S/D FROM 55-1-48B 2004 PAR 91 - 94

ELMTREE S/D UNIT 2 1995 (PAR 91 - 96) PAR 91-96  
 ELMTREE S/D 1991 (PAR 24, 86, 90)  
 PINE TREE S/D 1973 (PAR 9 - 30)  
 PINE TREE S/D 1972 (PAR 1 - 8)

TAX VALUATION MAP	LAND USE	MAP NO.
ROCKDALE COUNTY	2018	55
GEORGIA	DISTRICT	
	C.M.A.C.	
DATE REVISION	PROPOSED	