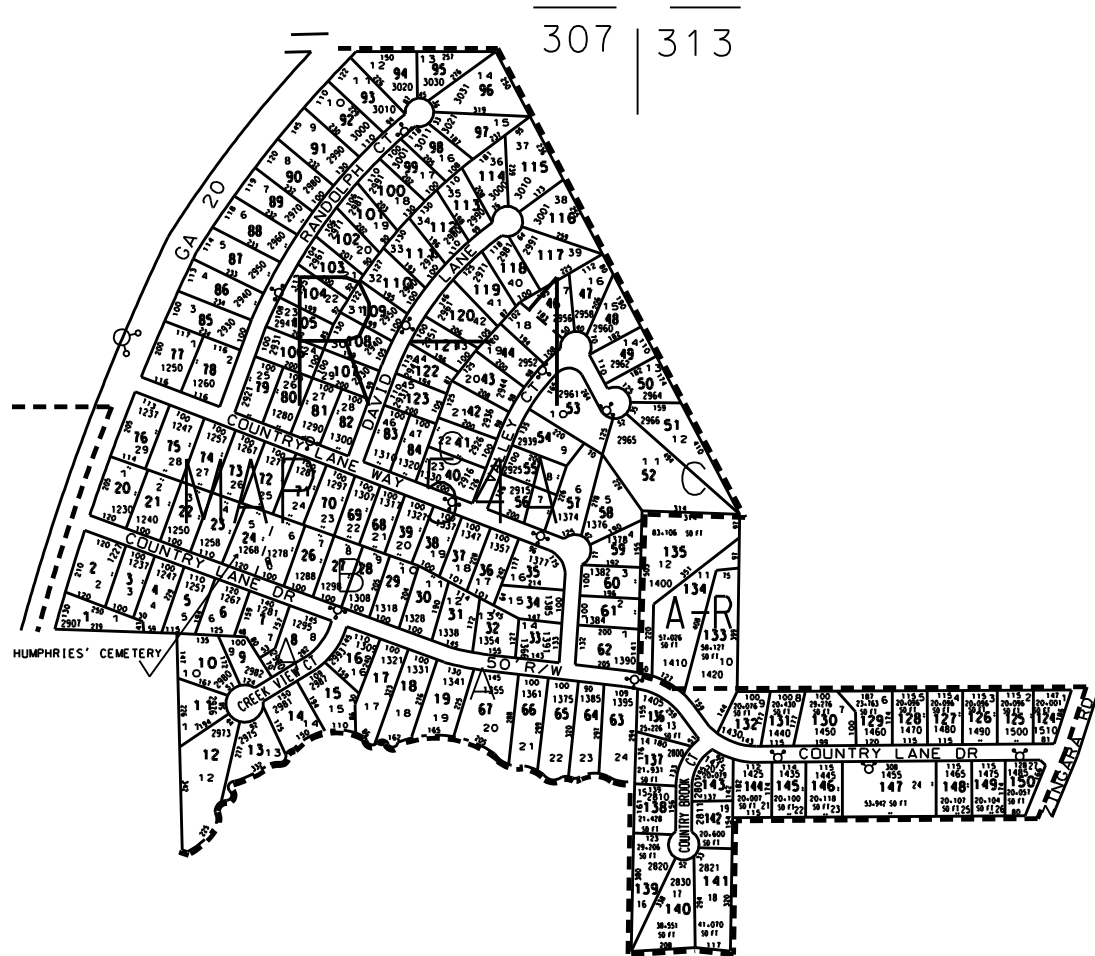
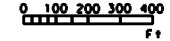


THIS MAP HAS BEEN COMPILED FROM THE MOST AUTHENTIC INFORMATION AVAILABLE, AND NEITHER ROCKDALE COUNTY NOR HUMPHRETT AND ASSOCIATES, INC. ASSUME RESPONSIBILITY FOR ERRORS OR OMISSIONS



- LEGEND**
- County Boundary
 - Map Boundary
 - Limit of Ownership
 - Original Planned Line
 - District Line
 - Railroad Right of Way
 - City Limit
 - Easement
 - Stream
- CHURCH SCHOOL CEMETERY

- COUNTRY LANE ESTATES**
- UNIT 1 P.B. 1 PG. 23 (PAR 1 - 31)
 - UNIT 2 PLAT NOT RECORDED (PAR 32 & 67)
 - UNIT 3 P.B. 1 P.G. 235 (PAR 33 - 66)
 - UNIT 4 1983 (PAR 68 - 84)
 - UNIT 5 1984 (PAR 85 - 106)
 - UNIT 6 1985 (PAR 107 - 123)
 - UNIT 7 1987 (PAR 124 - 150)



TAX VALUATION MAP	LAND LOT	307- 313	MAP NO.
ROCKDALE COUNTY	DISTRICT	16	54A
GEORGIA	G. M. D.		
DATE: DEC. 1, 1987	LAST REVISION: 1993	PHOTO NO.	