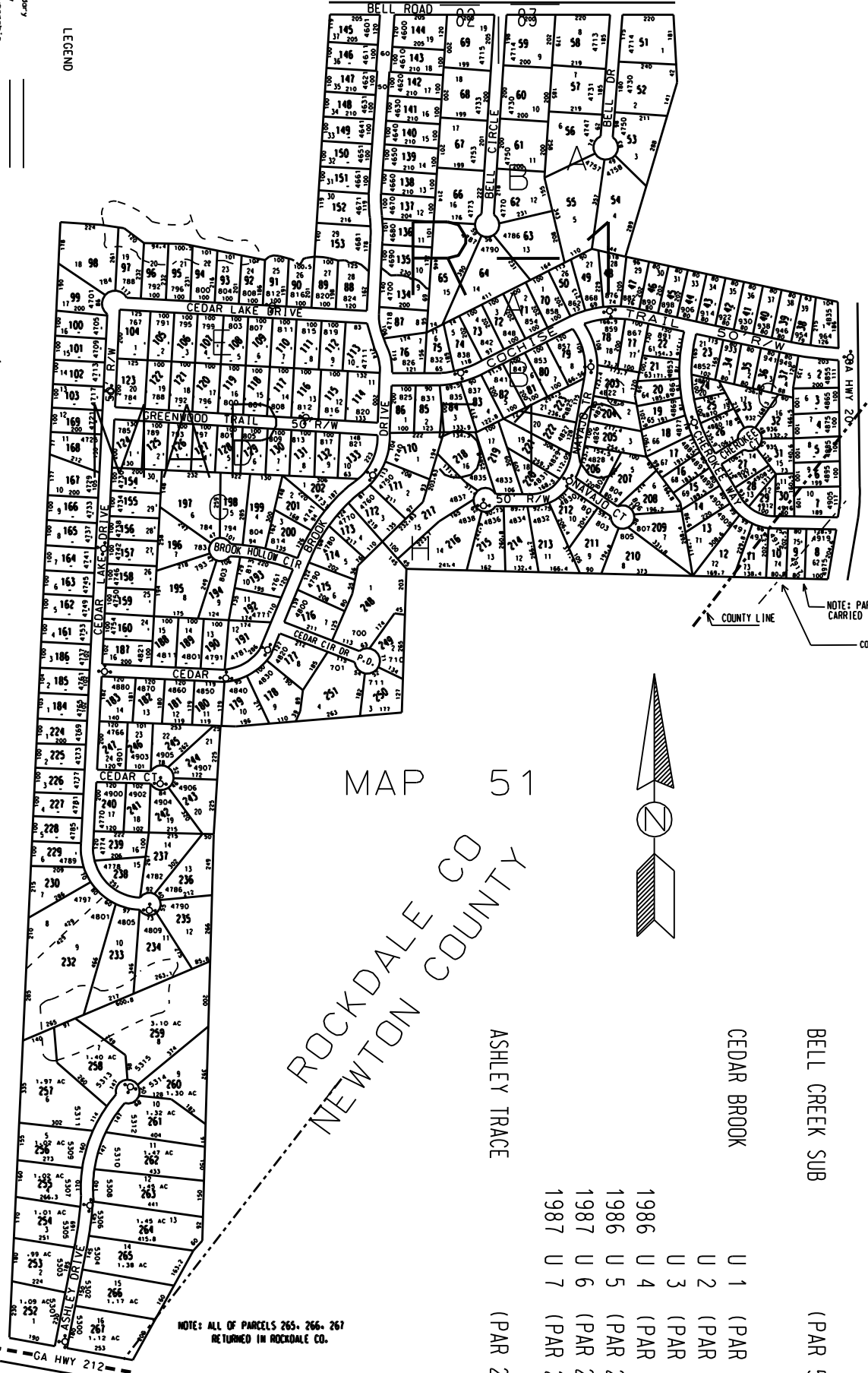


THIS MAP HAS BEEN COMPILED FROM THE MOST AUTHENTIC INFORMATION AVAILABLE, AND NEITHER ROCKDALE COUNTY NOR HUNNICUTT AND ASSOCIATES, INC. ASSUME RESPONSIBILITY FOR ERRORS OR OMISSIONS.



MAP 51B

LEGEND

- County Boundary
- Map Boundary
- Limit of Ownership
- Original Platted Line
- District Line
- Railroad Right of Way
- City Limit
- Equipment
- Stream
- CHURCH
- SCHOOL
- Cemetery

NOTE: PARCELS 8 & 9 ALL CARRIED IN NEWTON CO.
COUNTY LINE AS PER PLAT SURVEYORS

MAP 51

ROCKDALE CO
NEWTON COUNTY

INDIAN RIDGE	U 1 (PAR 1 - 8)
	U 2 (PAR 9 - 50)
	U 3 (PAR 70 - 86)
BELL CREEK SUB	(PAR 51 - 69)
CEDAR BROOK	U 1 (PAR 87 - 133)
	U 2 (PAR 134 - 153)
	U 3 (PAR 154 - 169)
	1986 U 4 (PAR 170 - 202)
	1986 U 5 (PAR 203 - 223)
	1987 U 6 (PAR 224 - 247)
	1987 U 7 (PAR 248 - 251)
ASHLEY TRACE	(PAR 252 - 267)

NOTE: ALL OF PARCELS 265, 266, 267 RETURNED IN ROCKDALE CO.

TAX VALUATION MAP	LAND LOT	82, 83	MAP NO
ROCKDALE COUNTY	DISTRICT	10TH	51C
GEORGIA	C.M.D.		
DATE: DEC. 1, 1987 (LAST REVISION 1983)	PHOTO NO.		1-5-2001

0 100 200 300 400
F 4