

THIS MAP HAS BEEN COMPILED FROM THE MOST AUTHENTIC INFORMATION AVAILABLE, AND NEITHER ROCKDALE COUNTY NOR HUNTERDICK AND ASSOCIATES, INC. ASSUME RESPONSIBILITY FOR ERRORS OR OMISSIONS

NOTES:

1. 51A-1-162 COMBINED WITH 51A-1-161 FOR 2001 PER OWNER'S REQUEST (US 1-30-01)
2. 51A-1-98 combined with 51A-1-90 2004 by owner's request
3. 51A-1-98 from 51A-1-90 deed 3312/101 12/8/04

MAP 32A

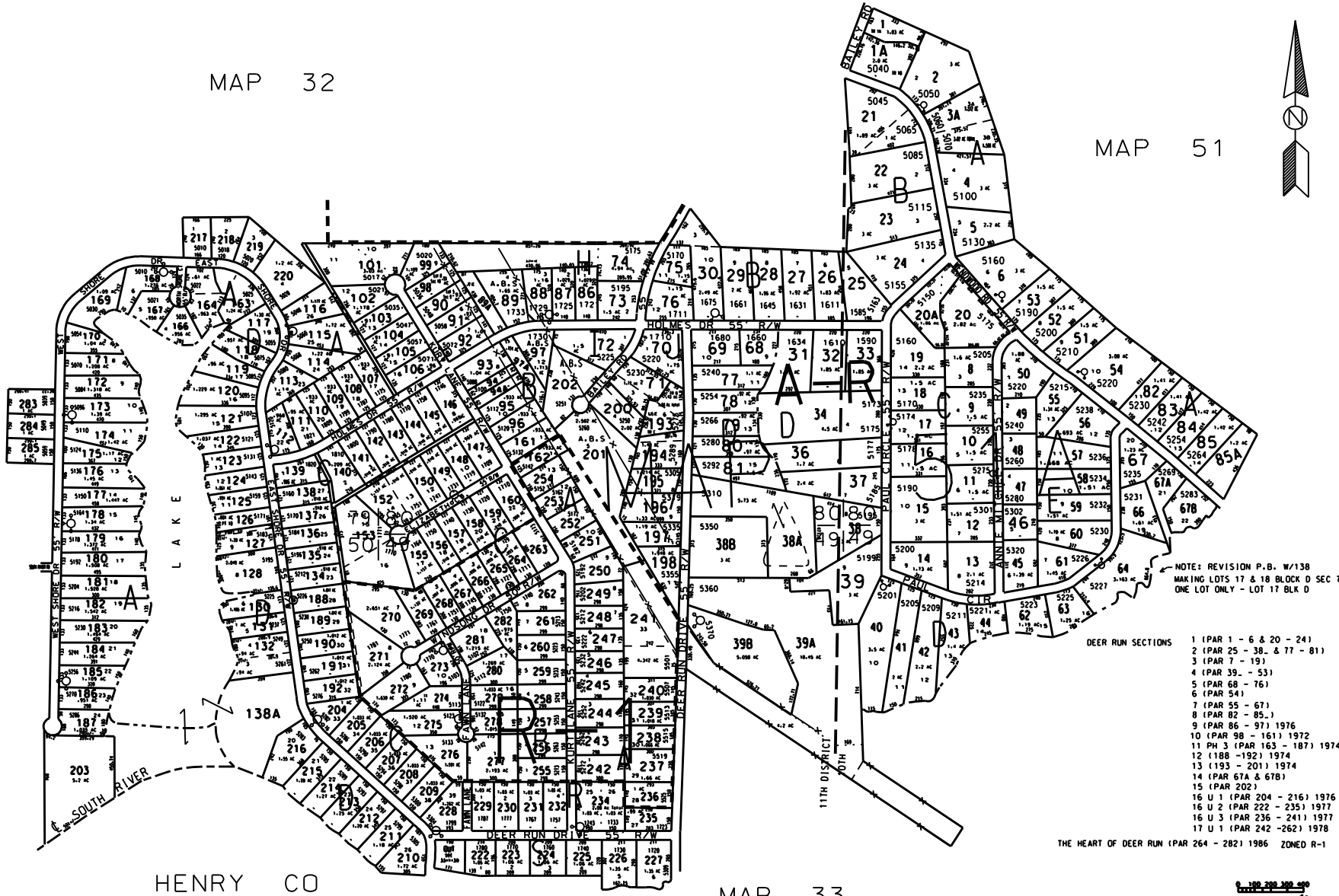
MAP 32

MAP 51

MAP 33

MAP 32

MAP 33



NOTE: REVISION P.B. W/138
MAKING LOTS 17 & 18 BLOCK D SEC 7
ONE LOT ONLY - LOT 17 BLK D

- DEER RUN SECTIONS
- 1 (PAR 1 - 6 & 20 - 24)
 - 2 (PAR 25 - 38 & 77 - 81)
 - 3 (PAR 7 - 19)
 - 4 (PAR 39 - 53)
 - 5 (PAR 68 - 76)
 - 6 (PAR 54)
 - 7 (PAR 55 - 67)
 - 8 (PAR 82 - 85)
 - 9 (PAR 86 - 97) 1976
 - 10 (PAR 98 - 161) 1972
 - 11 PH 3 (PAR 163 - 187) 1974
 - 12 (188 - 192) 1974
 - 13 (193 - 201) 1974
 - 14 (PAR 67A & 67B)
 - 15 (PAR 202)
 - 16 U 1 (PAR 204 - 216) 1976
 - 16 U 2 (PAR 222 - 235) 1977
 - 16 U 3 (PAR 236 - 241) 1977
 - 17 U 1 (PAR 242 - 262) 1978
- THE HEART OF DEER RUN (PAR 264 - 282) 1986 ZONED R-1

- LEGEND
- County Boundary
 - Map Boundary
 - Limits of Ownership
 - Original Platted Line
 - Quarter Line
 - Railroad Right of Way
 - City Limits
 - Common Stream
 - Church
 - SCHOOL
 - CEMETERY

TAX VALUATION MAP	LAND LOT	MAP NO.
ROCKDALE COUNTY	DISTRICT 10 & 11	51A
GEORGIA		