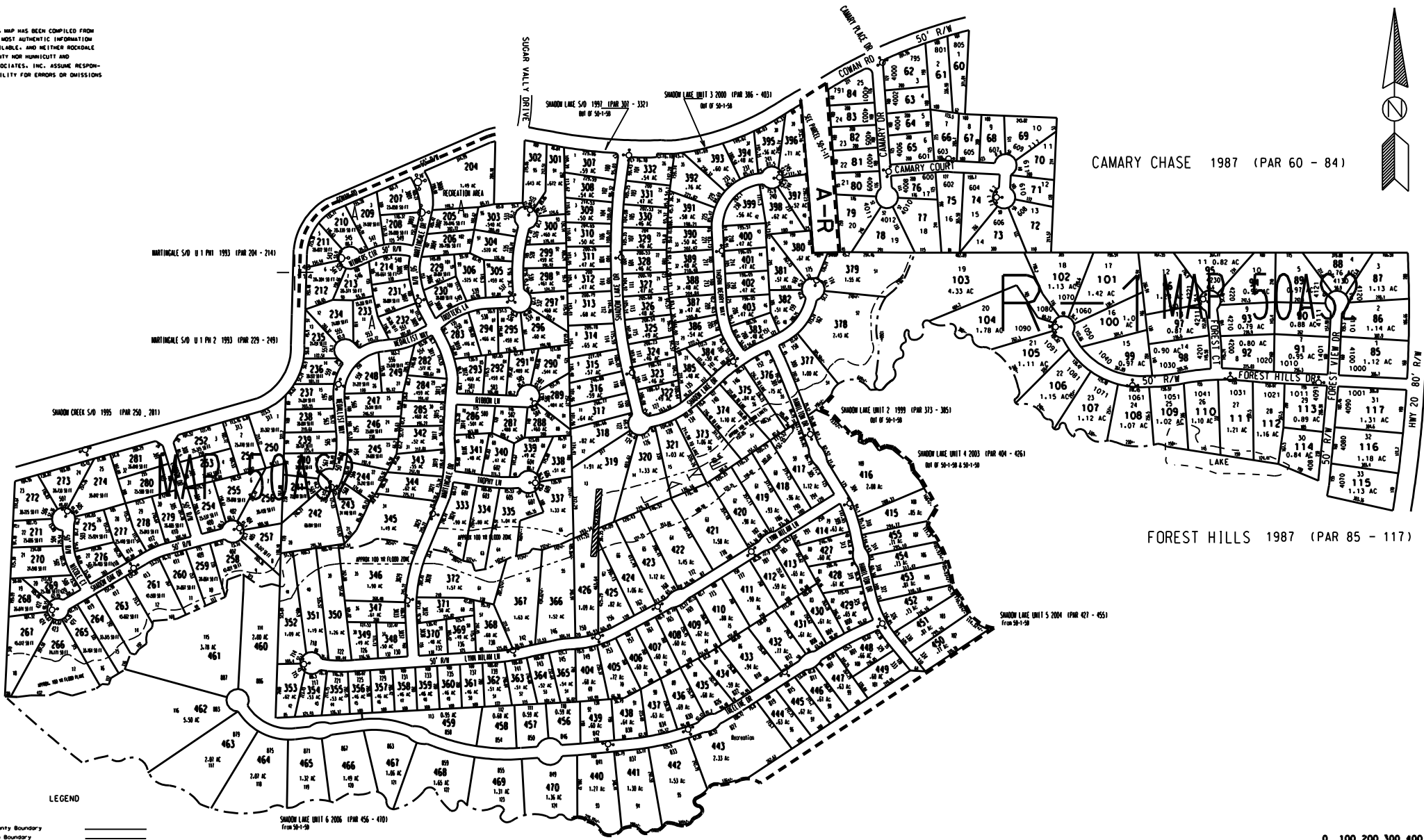


THIS MAP HAS BEEN COMPILED FROM THE MOST AUTHENTIC INFORMATION AVAILABLE, AND NEITHER ROCKDALE COUNTY NOR HUNNICUTT AND ASSOCIATES, INC. ASSUME RESPONSIBILITY FOR ERRORS OR OMISSIONS.



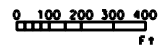
CAMARY CHASE 1987 (PAR 60 - 84)

FOREST HILLS 1987 (PAR 85 - 117)



- LEGEND
- County Boundary
 - Map Boundary
 - Limit of Ownership
 - Original Platted Line
 - District Line
 - Religious Ridge of Way
 - City Limit
 - Common
 - Stream
- CHURCH + SCHOOL CEMETERY +

MARIPOSA S/O U 2 1996 (PAR 282 - 283) OUT OF 50-1-12
 MARIPOSA S/O U 3 1996 (PAR 284 - 285) OUT OF 50-1-10 & 50-1-10
 MARIPOSA S/O U 4 1998 (PAR 333 - 344) OUT OF 50-1-12 & 50-1-10
 MARIPOSA S/O U 5 1999 (PAR 345 - 372) OUT OF 50-1-12 & 50-1-10 FOR 2000 TAX YEAR



TAX VALUATION MAP		LAND LOT 114 - 119	MAP NO
ROCKDALE COUNTY GEORGIA		DISTRICT 10	50A
DATE: DEC. 1, 1987 LAST REVISION: 2004		PHOTO NO.	1-100