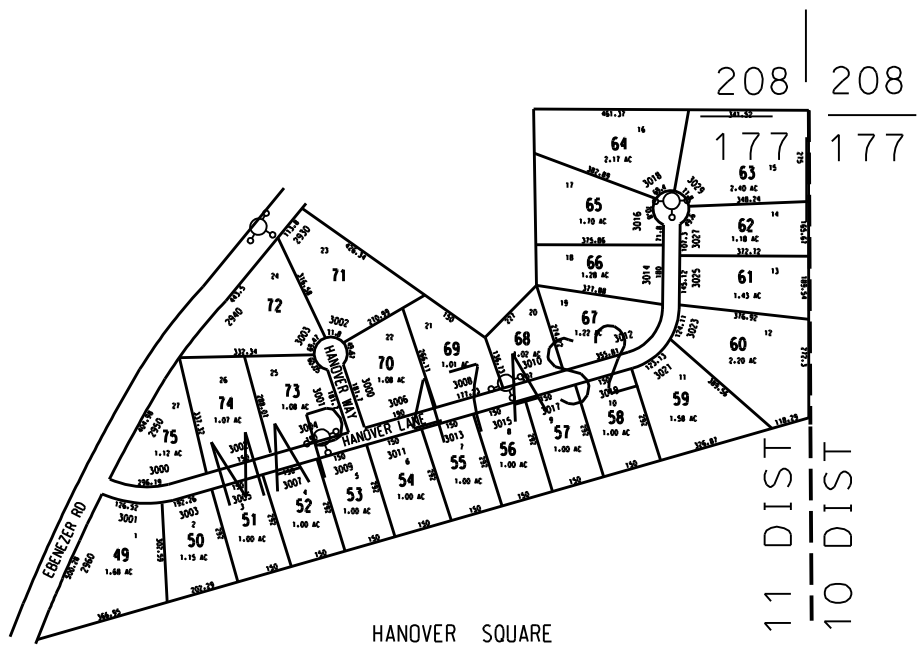
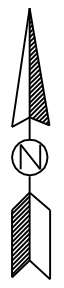
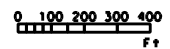


THIS MAP HAS BEEN COMPILED FROM THE MOST AUTHENTIC INFORMATION AVAILABLE, AND NEITHER ROCKDALE COUNTY NOR HUNNICUTT AND ASSOCIATES, INC. ASSUME RESPONSIBILITY FOR ERRORS OR OMISSIONS



LEGEND

- County Boundary
 - Map Boundary
 - Limit of Ownership
 - Original Platted Line
 - District Line
 - Railroad Right of Way
 - City Limit
 - Easement
 - Stream
- CHURCH SCHOOL CEMETERY



TAX VALUATION MAP		LAND LOT 177	MAP NO.
ROCKDALE COUNTY		DISTRICT 11	47A
GEORGIA		G. M. C.	SHEET 2
DATE: DEC. 1, 1987 (LAST REVISION 1993)		PHOTO NO.	1" = 200'