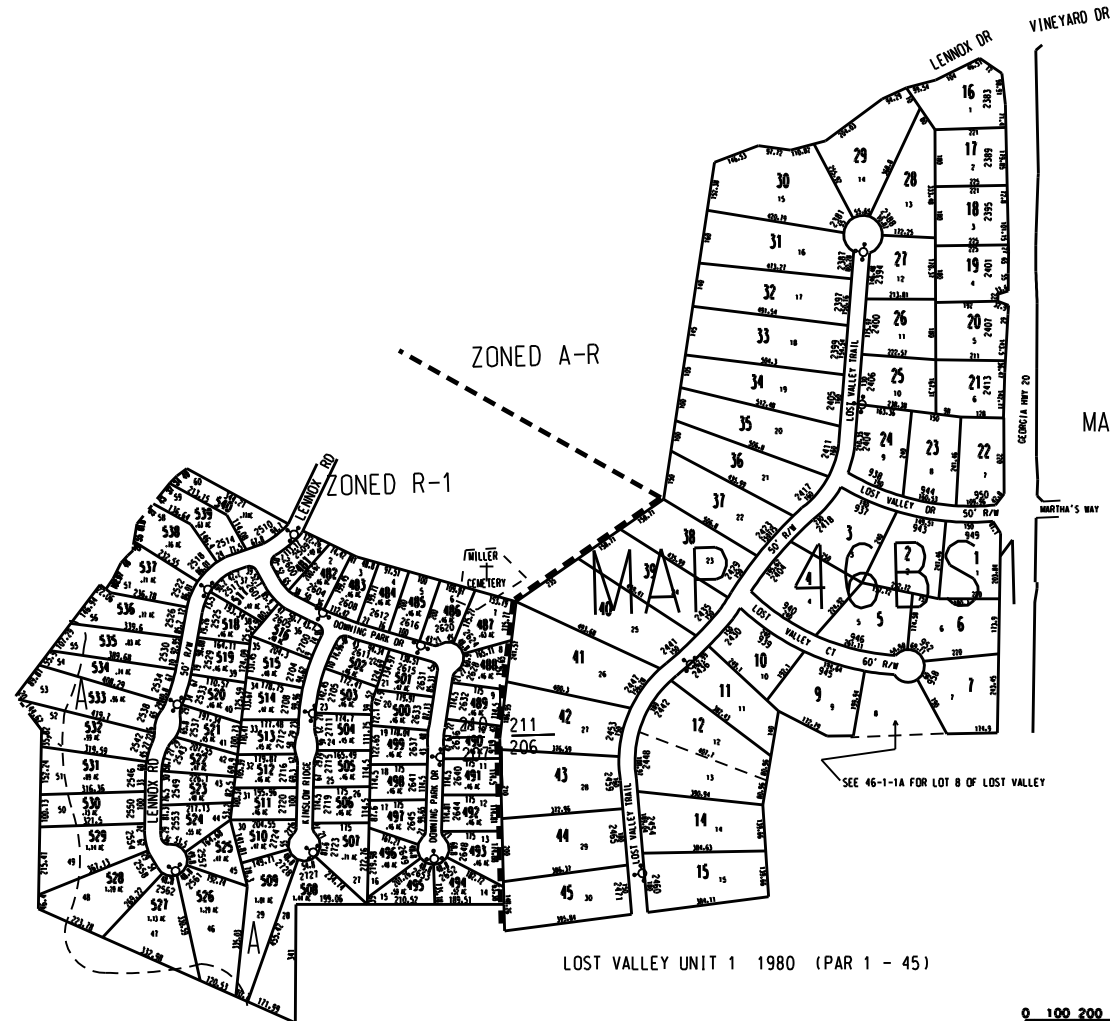


THIS MAP HAS BEEN COMPILED FROM THE MOST AUTHENTIC INFORMATION AVAILABLE, AND NEITHER ROCKDALE COUNTY NOR HURRICUTT AND ASSOCIATES, INC. ASSUME RESPONSIBILITY FOR ERRORS OR OMISSIONS

NOTES:

1. PARCEL 46-B-1-B COMBINED WITH 46-1-1A FOR 1999 PER FR. JOHN KIERAN BY JEROME CICIORA 9-23-98 U.S.



MAP 77

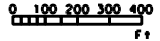
DOWNING PARK AT NOB HILL 2002 (PAR 481 - 540)  
FROM PARCEL 46-1-24A FOR 2003

LOST VALLEY UNIT 1 1980 (PAR 1 - 45)

SEE 46-1-1A FOR LOT B OF LOST VALLEY

LEGEND

- County Boundary
- Map Boundary
- Limit of Ownership
- Original Platted Line
- District Line
- Railroad Right of Way
- City Limit
- Easement
- Stream
- CHURCH
- SCHOOL
- CEMETERY



TAX VALUATION MAP	LAND LOT 211-206	MAP NO.
ROCKDALE COUNTY	DISTRICT 10	46B
GEORGIA	G.M.O.	SHEET 1 OF 3
DATE: DEC. 1, 1987 LAST REVISION 2002	PHOTO NO.	1:2500