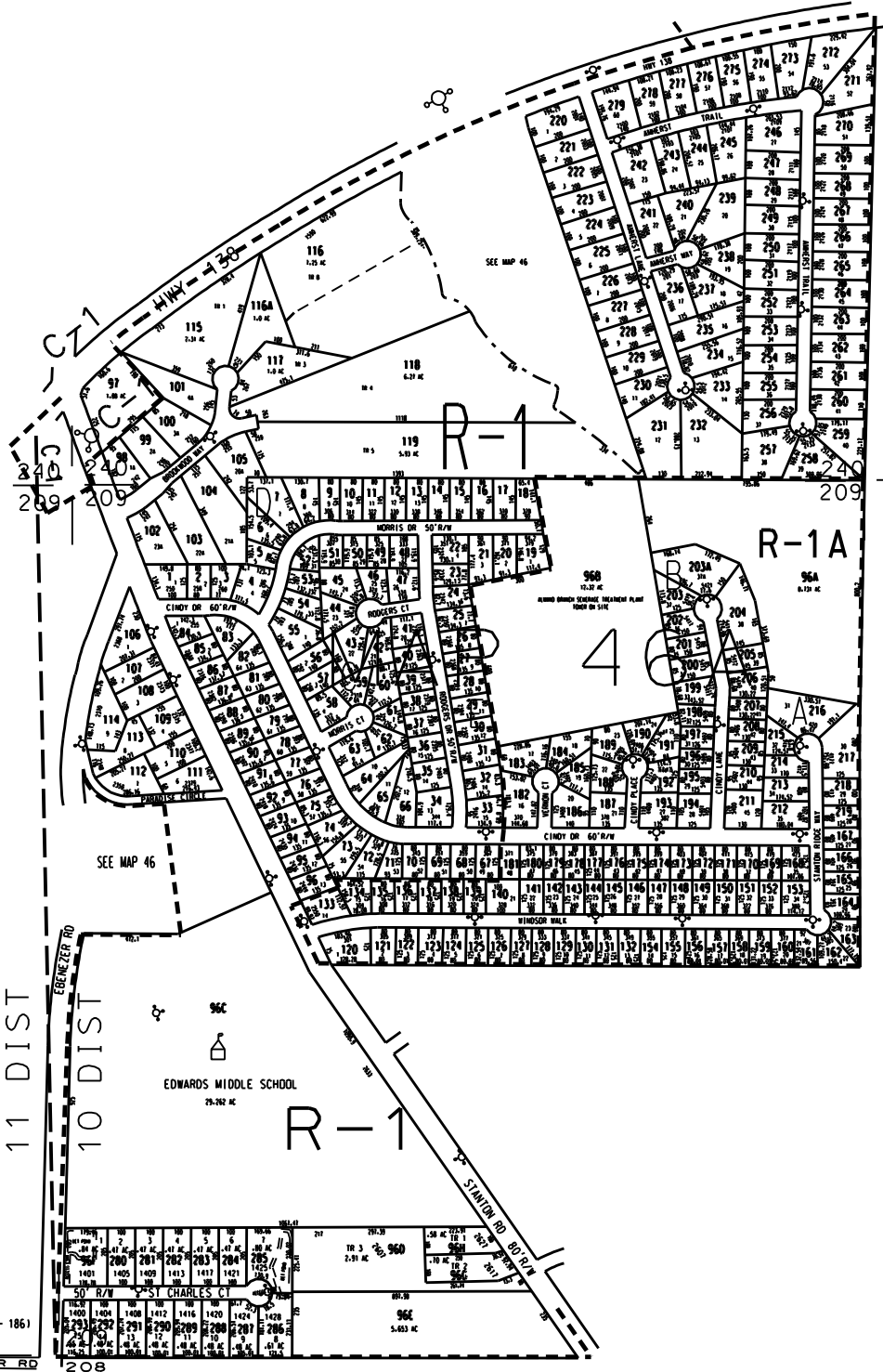


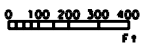
THIS MAP HAS BEEN COMPILED FROM THE MOST AUTHENTIC INFORMATION AVAILABLE, AND NEITHER ROCKDALE COUNTY NOR HUNNICUTT AND ASSOCIATES, INC. ASSUME RESPONSIBILITY FOR ERRORS OR OMISSIONS



LEGEND

- County Boundary
- Map Boundary
- Limit of Ownership
- Original Platted Line
- District Line
- Railroad Right of Way
- City Limit of Way
- City Limit
- Easement
- Stream
- CHURCH
- SCHOOL
- CEMETERY

- STANTON RIDGE 1975 (PAR 1 - 96)
- BROOKWOOD SOUTH U 1 1978 (PAR 98 - 105)
- STANTON POINT 1978 (PAR 106 - 114)
- BILTMORE PLACE UNIT 1 1984 (PAR 120 - 146)
- UNIT 2 1987 (PAR 147 - 166)
- UNIT 3 1987 (PAR 167 - 193)
- UNIT 4 1987 (PAR 194 - 219)
- AMHERST CHASE 1988 (PAR 220 - 279)



ST CHARLES SQUARE 1998 (PAR 964 - 280 - 1861)
FORM PARCEL 464-1-967 FOR THE 1999 TAX YEAR

TAX VALUATION MAP	LAND LOT 208, 209	MAP NO.
ROCKDALE COUNTY	240	46A
GEORGIA	DISTRICT 10	
DATE: DEC. 1, 1967 LAST REVISION 1999	G. M. O.	PHOTO NO.
		1" = 1/2" 220'