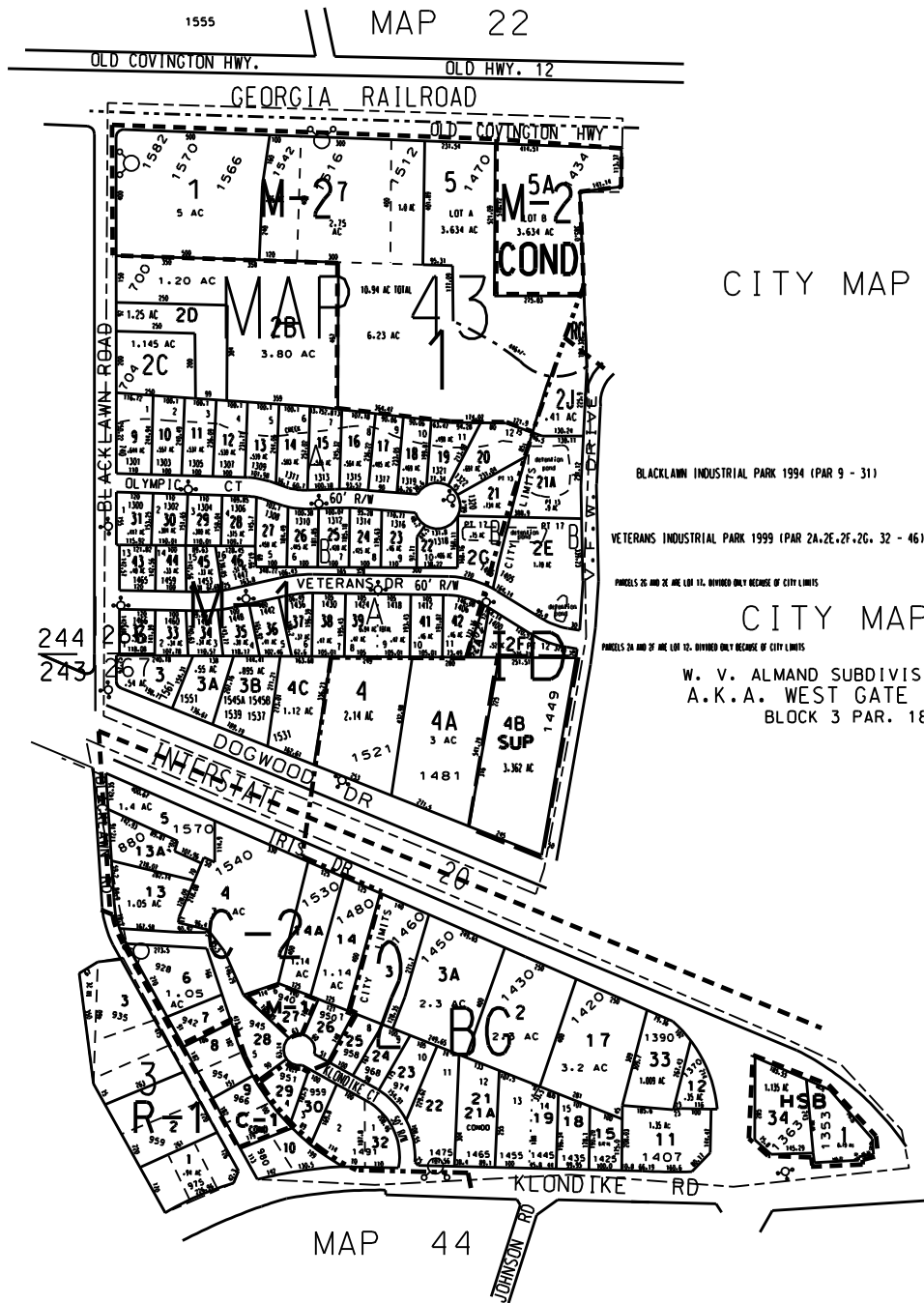


THIS MAP HAS BEEN COMPILED FROM THE MOST AUTHENTIC INFORMATION AVAILABLE, AND NEITHER ROCKDALE COUNTY NOR HUMPHRETT AND ASSOCIATES, INC. ASSUME RESPONSIBILITY FOR ERRORS OR OMISSIONS



MAP 23

CITY MAP 2

NOTES:
1. 6.140 AC TO BE REZONED FOR 02

BLACKLAWN INDUSTRIAL PARK 1994 (PAR 9 - 31)

VETERANS INDUSTRIAL PARK 1999 (PAR 2A, 2E, 2F, 2G, 32 - 46)

PARCELS 26 AND 27 ARE LOT 11. DIVIDED ONLY BECAUSE OF CITY LIMITS

PARCELS 24 AND 25 ARE LOT 12. DIVIDED ONLY BECAUSE OF CITY LIMITS

CITY MAP 3

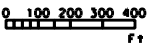
W. V. ALMAND SUBDIVISION P.B. A PG. 73
A.K.A. WEST GATE COMMERCIAL PARK
BLOCK 3 PAR. 18 THRU 32

MAP 24

CITY MAP 4

LEGEND

- County Boundary
- Map Boundary
- Limit of Ownership
- Original Platted Line
- District Line
- Railroad Right of Way
- City Limit
- Easement
- Stream
- CHURCH
- SCHOOL
- CEMETERY



TAX VALUATION MAP	Land Lot 266- 267	MAP NO.
ROCKDALE COUNTY	DISTRICT 16	43
GEORGIA	G. M. O. 476	
DATE: DEC. 1, 1987 LAST REVISION 2001 PHOTO NO. 852-50		