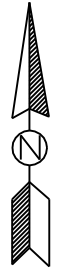
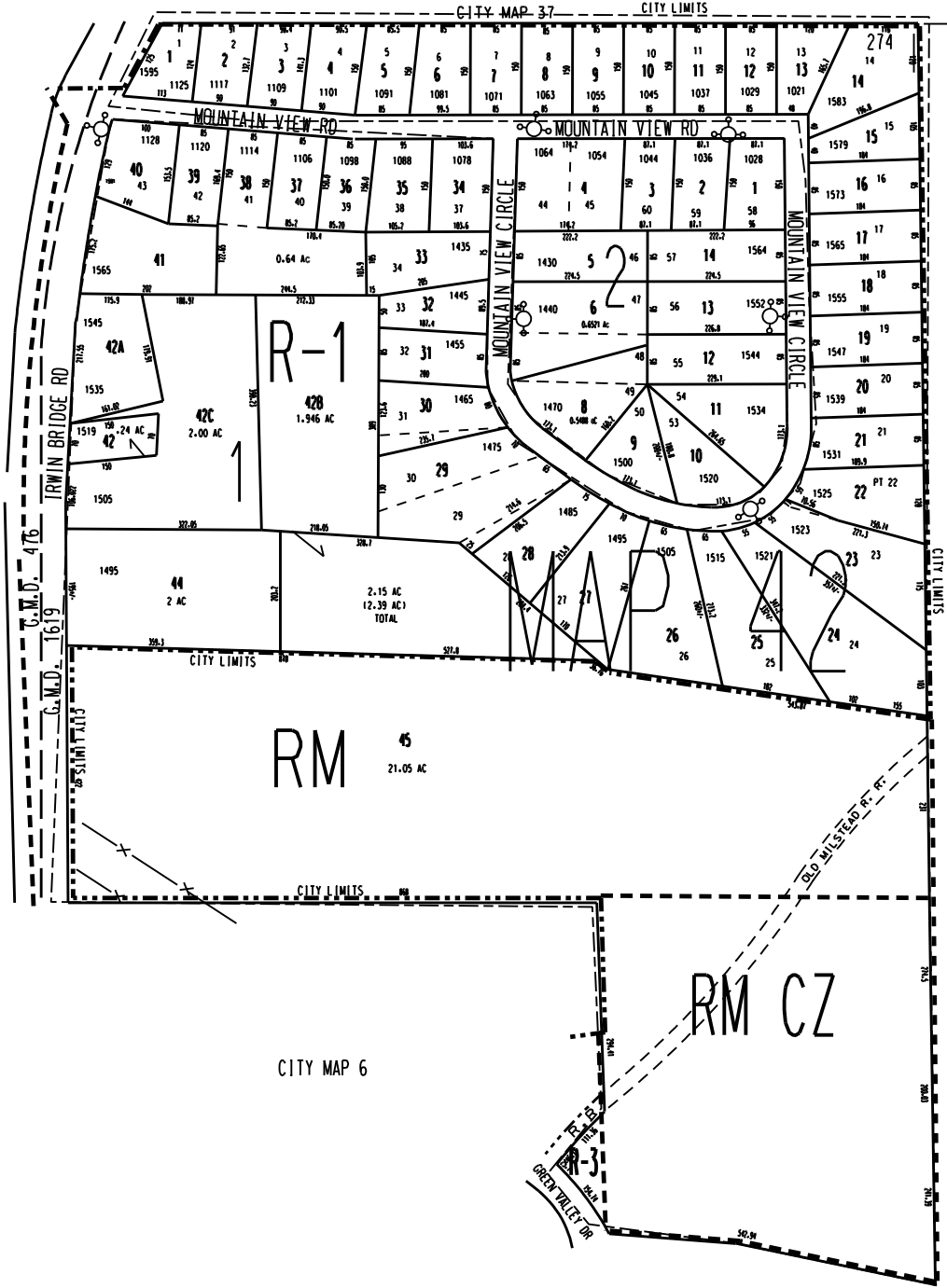


THIS MAP HAS BEEN COMPILED FROM THE MOST AUTHENTIC INFORMATION AVAILABLE, AND NEITHER ROCKDALE COUNTY NOR HURMCUTT AND ASSOCIATES, INC. ASSUME RESPONSIBILITY FOR ERRORS OR OMISSIONS



MAP 41

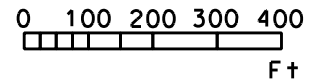


CITY MAP 37

CITY MAP 6

MAP 57

HIGHTOWER HILLS S/D P. B. B. PG. 300



LEGEND

| | |
|-----------------------|--------|
| ZONING | --- -- |
| County Boundary | --- -- |
| Map Boundary | --- -- |
| Limit of Ownership | --- -- |
| Original Platted Line | --- -- |
| District Line | --- -- |
| Railroad Right of Way | --- -- |
| City Limit | --- -- |
| Equipment | --- -- |
| Stream | --- -- |
| CHURCH | ✝ |
| SCHOOL | ⊠ |
| CEMETERY | ✝ |

| | | | |
|--|----------|------|---------|
| TAX VALUATION MAP | LAND LOT | 274 | MAP NO. |
| ROCKDALE COUNTY | DISTRICT | 16 | 42 |
| GEORGIA | C. M. D. | 1619 | |
| DATE: DEC. 1, 1967 LAST REVISION 1998 PHOTO NO. BSC 10 | | | |