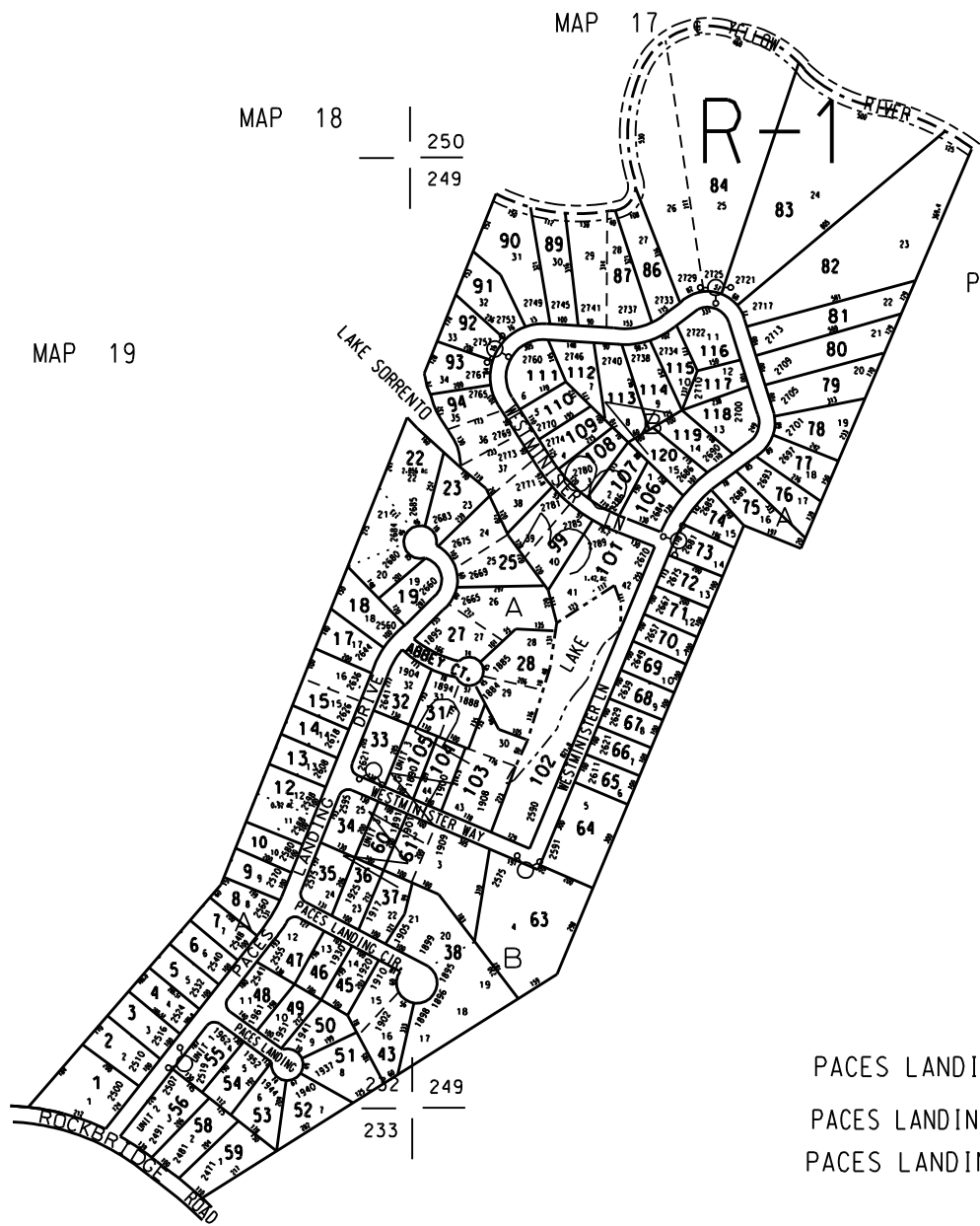
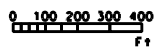


THIS MAP HAS BEEN COMPILED FROM THE MOST AUTHENTIC INFORMATION AVAILABLE, AND NEITHER ROCKDALE COUNTY NOR HUMPHREYS AND ASSOCIATES, INC. ASSUME RESPONSIBILITY FOR ERRORS OR OMISSIONS



PLAT BOOK I PAGE 144

PACES LANDING U 3 1974 (PAR. 60 - 120)
 PACES LANDING U 2 1973 (PAR. 56, 58, & 59)
 PACES LANDING U 1 1971 (PAR. 1 - 55)



LEGEND

- County Boundary
- Map Boundary
- Limit of Ownership
- Original Platted Line
- District Line
- Railroad Right of Way
- City Limit
- Easement
- Stream
- CHURCH
- SCHOOL
- CEMETERY

TAX VALUATION MAP	LAND LOT 232-233	MAP NO
ROCKDALE COUNTY	249	38A
GEORGIA	DISTRICT 16	
	C. M. O. 476	
DATE: DEC. 1, 1987 (LAST REVISION 1993)	PHOTO NO.	1-2-200