

PARCEL 37-1-57 CONT. ON MAP 17

MAP 35



THIS MAP HAS BEEN COMPILED FROM THE MOST AUTHENTIC INFORMATION AVAILABLE, AND NEITHER ROCKDALE COUNTY NOR HERRICK AND ASSOCIATES, INC. ASSUME RESPONSIBILITY FOR ERRORS OR OMISSIONS

MAP 17

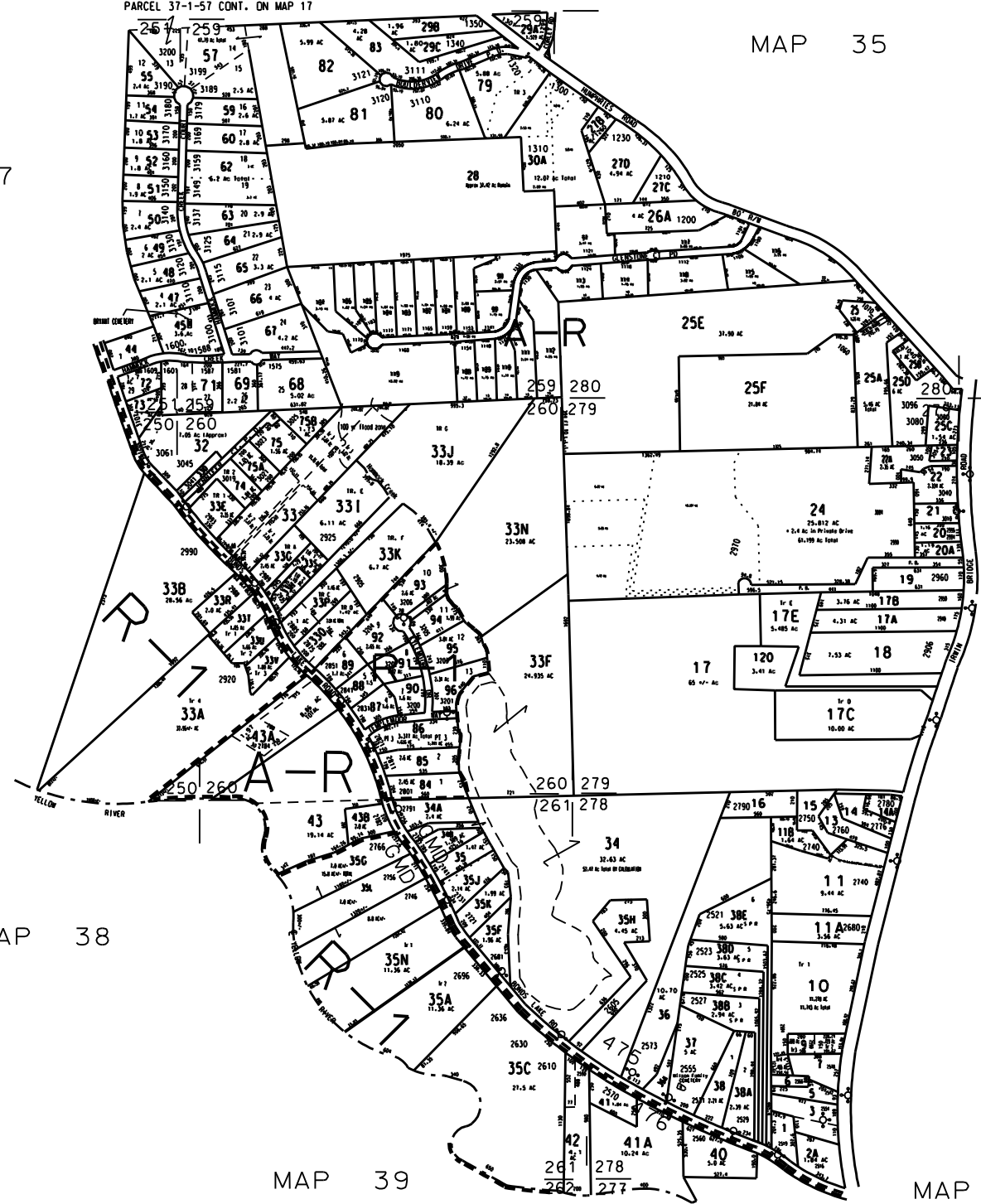
- NOTES:
1. PARCEL 37-1-25D OUT OF 37-1-25A FOR 2000 PER DEED 1765/51 9-27-99 (12-29-99 US)
 2. PARCEL 37-1-33S OUT OF 37-1-33H FOR 2001 PER PLAT 29/37 (12-14-00 US)
 3. 37-1-8 combined with 37-1-10 by plat 30/151 for 02
 4. 6.14 ac from 37-1-25 to 37-1-25d deed 2200/248 1-25-02
 5. 37-1-25 & 37-1-25f from 37-1-25 by plat 31/174 for 03
 6. 37-1-331, 330 & 330 combined with 37-1-33 by owners request 2003
 7. .029 ac from Rockdale Co. sold to City of Rockdale by deed 47262/1 3/25/03
 8. 37-1-58 combined with 37-1-57 by owners request 2003
 9. 0.72 ac from 37-1-10 to 37-1-10 deed 3004/252 7/25/04
 10. 37-1-35H from 37-1-35A deed 3145/272 6/24/04
 11. 37-1-21A & 37-1-20 combined with 37-1-20 by owners request 2004
 12. 37-1-331, 330, 330 from 37-1-33H by plat 33/176 2009
 13. 2.15 AC FROM 37-1-24 INTO 37-1-24B BY DEED 3859/252
 14. CLEANSING S/D FROM 37-1-26 & 37-1-31 FOR 2010 (FRMC 0991 THRU 0191)

MAP 36

MAP 38

MAP 39

MAP 55



- LEGEND
- CHD Boundary
 - County Boundary
 - Map Boundary
 - Limit of Ownership
 - Original Platted Line
 - District Line
 - Railroad Right of Way
 - City Limit
 - Stream
 - CHURCH
 - SCHOOL
 - CEMETERY

SMOKERISE EAST UNIT 3 PHASE 1 PAR. 84-96
BOULDERVEUE 1987 PAR. 79 - 83
HAMMOCK CREEK S/D 1976 PAR. 44 - 73

TAX VALUATION MAP	LAND LOT 250-259-261	MAP NO.
ROCKDALE COUNTY	DISTRICT 16	37
GEORGIA	C. M. C. 475 & 476	
DATE: DEC. 1, 1987	LAST REVISION: 2009	PHOTO NO. 856 - 163 1" = 400'